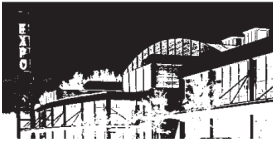

MERC Commission Meeting

February 7, 2018
12:30 pm

Oregon Convention Center
7777 NE MLK Jr. Ave
Room F150



600 NE Grand Ave.
Portland, OR 97232
503-797-1780

www.oregonmetro.gov



Metro | *Exposition Recreation Commission*

Agenda

Meeting: Metro Exposition Recreation Commission Meeting
Date: Wednesday, February 7, 2018
Time: 12:30-2:30 p.m.
Place: Oregon Convention Center Room F150

CALL TO ORDER

12:30 1. QUORUM CONFIRMED

12:35 2. OPPORTUNITY FOR PUBLIC COMMENT ON NON-AGENDA ITEMS

12:40 3. COMMISSION/COUNCIL LIAISON COMMUNICATIONS **Karis Stoudamire-Phillips,
Tom Hughes**

12:45 4. GM COMMUNICATIONS **Scott Cruickshank**

12:50 5. FINANCIAL REPORT, pages 4-21 **Rachael Lembo**

12:55 6. VENUE BUSINESS REPORTS **Robyn Williams, Matthew P.
Rotchford, Craig Stroud**

1:15 7. FY 2016-2017 FINANCIAL AUDIT , pages 23-34 **Ashley Osten, Moss Adams**

1:30 8. CONSTRUCTION CAREERS PATHWAYS PROJECT UPDATE **David Fortney**

1:50 9. METRO DIVERSITY, EQUITY AND INCLUSION PROGRAM UPDATE **Raahi Reddy**

2:10 10. CONSENT AGENDA
• Record of MERC Actions, January 3, 2018, pages 36-38

2:15 11. ACTION AGENDA
11.1 Resolution 18-02: For the purpose of approving and transmitting to the Metro Council budget amendments to the Metropolitan Exposition Recreation Commission (MERC) Fund Approved Budget for fiscal year 2017-18, and requesting amendment of the Capital Improvement Plan (CIP) FY 2017-18, pages 40-44 **Rachael Lembo**

ADJOURN

MERC Commission Meeting

February 7, 2018
12:30 pm

5.0 Financial Report

DECEMBER 2017

FINANCIAL INFORMATION

For Management Purposes only



OREGON

Oregon
Convention
Center



Memo



Metro

600 NE Grand Ave.
Portland, OR 97232-2736

Date: February 7, 2018
To: Commissioner Karis Stoudamire-Phillips, Chair
Commissioner Deidra Krys-Rusoff, Secretary-Treasurer
Commissioner John Erickson
Commissioner Damien Hall
Commissioner Ray Leary
Commissioner Dañel Malán
Commissioner Deanna Palm

From: Rachael Lembo – MERC Finance Manager
Re: Financial Updates for December 2017

December 2017 Executive Summary

December was a busy month at Portland's Centers for the Arts, with lots of holiday shows and over 100,000 attendees, the highest month so far this fiscal year. It's typically a slower month at the Oregon Convention Center and Portland Expo Center, a break before a busy January which includes the International Auto Show at OCC and the Portland Boat Show and Rose City Classic Dog Show at Expo. It marks the halfway point of the fiscal year, though all venues are expected to have a busier second half this year so we're not quite to the halfway point financially.

December was also full of budgeting excitement, as budgets were due mid-January. The Budget Committee will meet in January and February to discuss the proposed budgets, and a resolution to approve the FY2018-19 budget will be presented to the Commission in March.

Lastly, the Portland-Salem 2nd half CPI was released in January, and is 3.94%. This is well above the US City Average of 2.04%, and of other West Coast cities: San Francisco 2.89%, Seattle 3.13%. This is the last index for Portland-Salem; the Bureau of Labor Statistics will discontinue it as part of a geographic revision. Going forward West Coast Size A (urban areas with more than 1.5 million people) will be used.

Total MERC Venues – December Financial Statistics

MERC Venues Events & Attendance

Overall events and attendance were comparable to the prior year. The Portland Expo Center saw a small bump primarily due to a new event, Black Light Yoga. The Convention Center had a small decrease due to the November start of Festival of Trees. Portland's Centers for the Arts was up primarily due to holiday shows by resident companies, including Oregon Ballet Theater and the Oregon Symphony.

Total MERC Venues	2016		2017		Change from Prior Year	
	Events	Attendance	Events	Attendance	Events	Attendance
Q1	284	342,829	281	322,419	(3), (1%)	(20,410), (6%)
October	166	170,280	167	186,547	1, 1%	16,267, 10%
November	141	163,917	178	186,175	37, 26%	22,258, 14%
December	137	179,245	135	185,533	(2), (1%)	6,288, 4%
YTD	728	856,271	761	880,674	33, 5%	24,403, 3%

MERC Venues Revenues & Expense

Total venue event revenues (charges for services and food & beverage) through December are \$22.2 million, 47% of annual budget. Overall operating expenses through October are \$31.4 million, 49% of annual budget. Total MERC net operations through November are \$2 million, comparable to the three year historical average.

	FY2017-18 YTD	Budget	% of Budget
Event Revenues	22,225,591	47,307,634	47%
Other Revenues	11,231,712	19,993,193	56%
Operating Expenses	31,425,787	64,024,639	49%
Net Operations	2,031,516	3,276,188	62%

Food & Beverage

The food and beverage margin is behind the prior year at both OCC and Portland'5. Expo is ahead of the prior year, due to Cirque du Soleil this fall. All venues have busy months ahead which should increase the margin.

	FY2017-18 YTD	Budget	Prior Year YTD
OCC	12.6%	16.9%	18.1%
P5	27.3%	21.2%	30.5%
Expo	7.9%	17.0%	5.7%

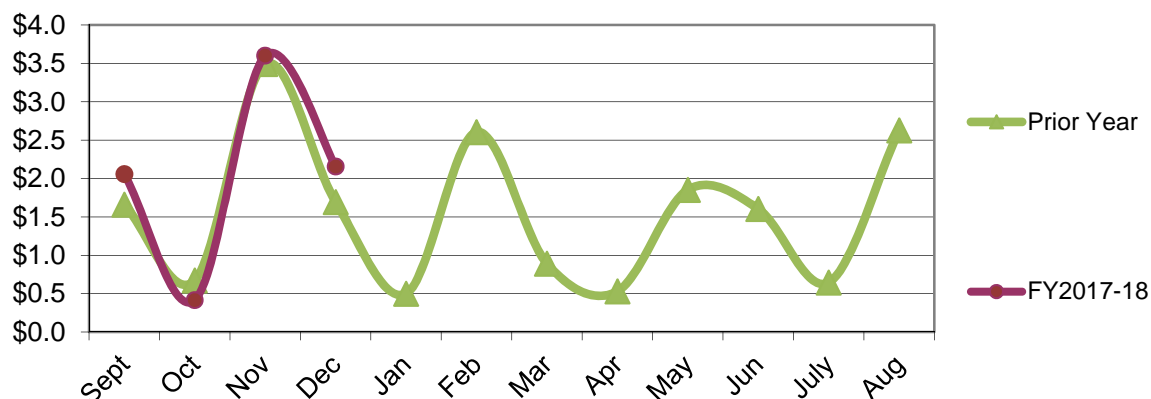
Transient Lodging Tax (TLT)

The December TLT payment was \$2.2 million, up over \$450,000 from the prior year. Total YTD collections are up 9%. While timing of payments can cause monthly receipts to vary year to year, this presents a stronger position than last year at this time, when collections were up just under 7%.

Metro TLT receipts	FY2016-17	FY2017-18	\$ Var	% Var
Sept-Nov	5,826,749	6,077,022	250,273	4%
Dec	1,694,772	2,157,905	463,133	27%
YTD	7,521,522	8,234,927	713,405	9%

TLT Collections by Month

Shown in Millions



Historical Actual Comparison FY 2014-15 to FY 2017-18

	Fiscal Year:	FY 2014-15	FY 2015-16	FY 2016-17	FY 2017-18	3-yr Hist.	% Var	% Var
Revenues		YTD	YTD	YTD	YTD	Average	Average	PY
Food and Beverage		7,857,496	10,319,890	8,488,316	8,768,154	8,888,567	-1.4%	3.3%
Charges for Services		10,463,474	12,909,247	12,860,734	13,457,437	12,077,818	11.4%	4.6%
<i>Subtotal Event Revenues</i>		<i>18,320,970</i>	<i>23,229,138</i>	<i>21,349,050</i>	<i>22,225,591</i>	<i>20,966,386</i>	<i>6.0%</i>	<i>4.1%</i>
Lodging Tax		5,816,432	7,045,524	7,521,522	8,234,927	6,794,492	21.2%	9.5%
Other		274,191	145,161	322,577	2,996,785	247,310	1111.8%	829.0%
Total Revenues		24,411,593	30,419,822	29,193,149	33,457,303	28,008,188	19.5%	14.6%
Expenses								
Food and Beverage		6,107,782	7,491,097	6,821,490	7,478,561	6,806,789	9.9%	9.6%
Personnel Services		8,615,020	9,389,645	9,653,423	10,305,319	9,219,362	11.8%	6.8%
Materials and Services		5,866,074	6,884,031	7,602,778	8,418,382	6,784,295	24.1%	10.7%
Other Operating Expense		3,158,053	3,192,835	3,179,635	5,223,526	3,176,841	64.4%	64.3%
Total Operating Expense		23,746,929	26,957,608	27,257,325	31,425,787	25,987,287	20.9%	15.3%
Net Operations		664,664	3,462,214	1,935,824	2,031,516	2,020,901	0.5%	4.9%
Food & Beverage Margin \$		1,749,715	2,828,793	1,666,826	1,289,593	2,081,778	-38.1%	-22.6%
Food & Beverage Margin %		22.3%	27.4%	19.6%	14.7%	23.1%		

Oregon Convention Center

Convention Center December event revenues were \$1.2 million, slower than recent months but normal for December. The total revenue increase over prior year of \$516,000 is almost entirely due to higher receipts from TLT. Food and beverage had a negative margin as there wasn't enough activity to cover the overhead costs, which is comparable to the prior year. Expenses, excluding the \$2 million pass through to the Visitor Development Fund, are at 46% of budget, slightly above the 43% mark we were at last December. Overall net operations are \$3.2 million, well above the \$2.4 million at this time last year.

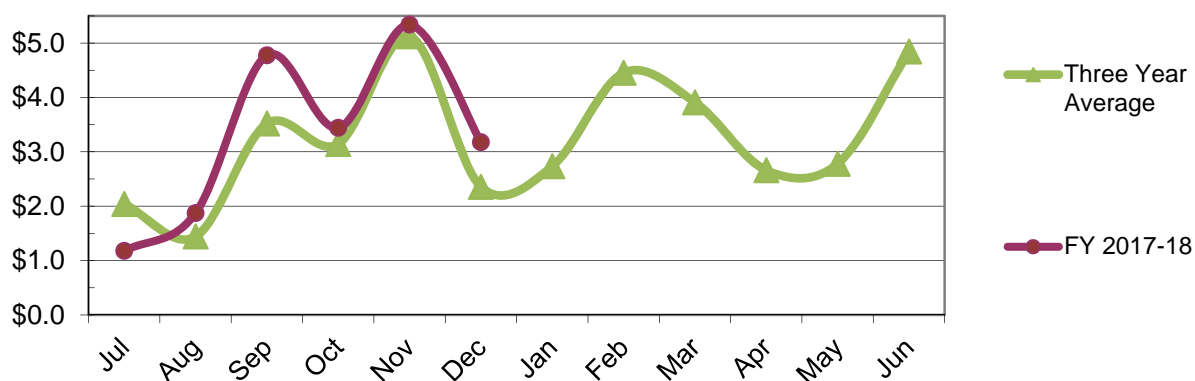
Highest Grossing Events

Event*	Gross Event Revenue	% of Event Revenue
Marquis and Consonus	\$157,148	15%
USA Fencing: December North American Cup 2017	146,956	14%
Festival of Trees 2017	96,971	9%
Oregon Business Plan Leadership Summit 2017	91,555	8%
All other Events	590,019	54%
Total Event Revenues	\$1,082,649	100%

*Note: revenue reported in the table above reflects event receipts in the reporting month only and not total gross event revenue or total gross monthly revenue.

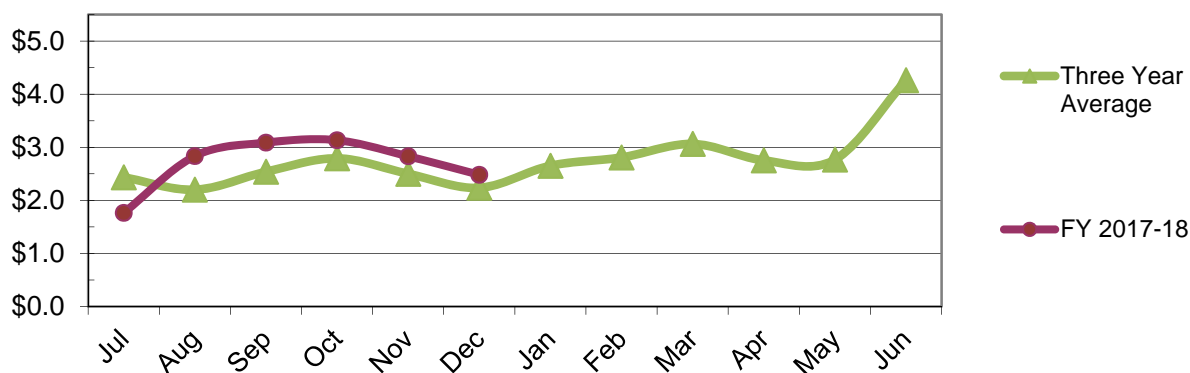
OCC Program Revenues by Month

Shown in Millions



OCC Program Expense by Month

Shown in Millions



Portland's Centers for the Arts

Portland's was busy with holiday shows in December, and had event revenues of \$1.5 million. Food and beverage sales were strong with a monthly margin of 30.4%, bringing the YTD margin up to 27.2%. Expenses other than food and beverage were up \$120,000, 9%, from the prior year; this includes credit card and ticketing fees on the massive Hamilton single tickets sale, as well as higher artist fee expense due to the expanding P's Presents program. Overall net operations are negative \$680,000, however that is expected due to the big shows this spring. The rental revenue budget projects 58% of revenue will come in January-June 2018.

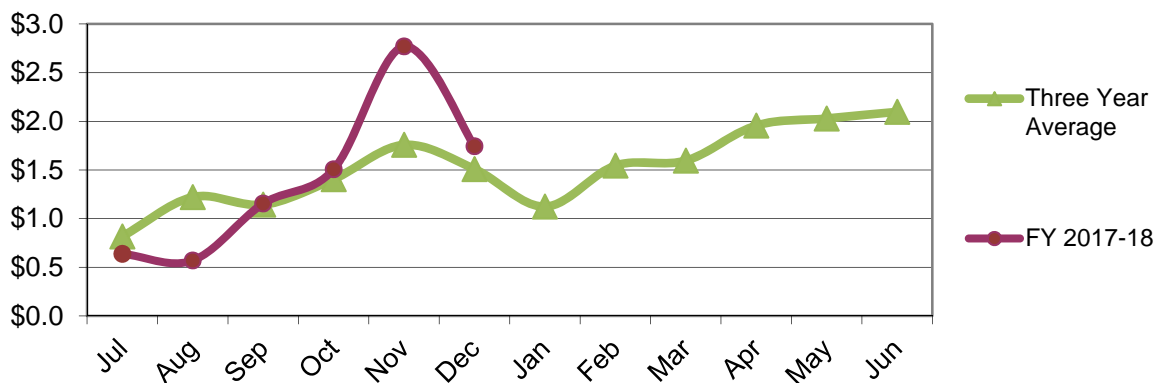
Highest Grossing Events

Event*	Gross Event Revenue	% of Event Revenue
The Nutcracker	\$322,281	23%
Beauty and the Beast	133,789	10%
Les Miserables	97,567	7%
John Mulaney	85,392	6%
All other Events	757,205	54%
Total Event Revenues	\$1,396,234	100%

*Note: revenue reported in the table above reflects event receipts in the reporting month only and not total gross event revenue or total gross monthly revenue.

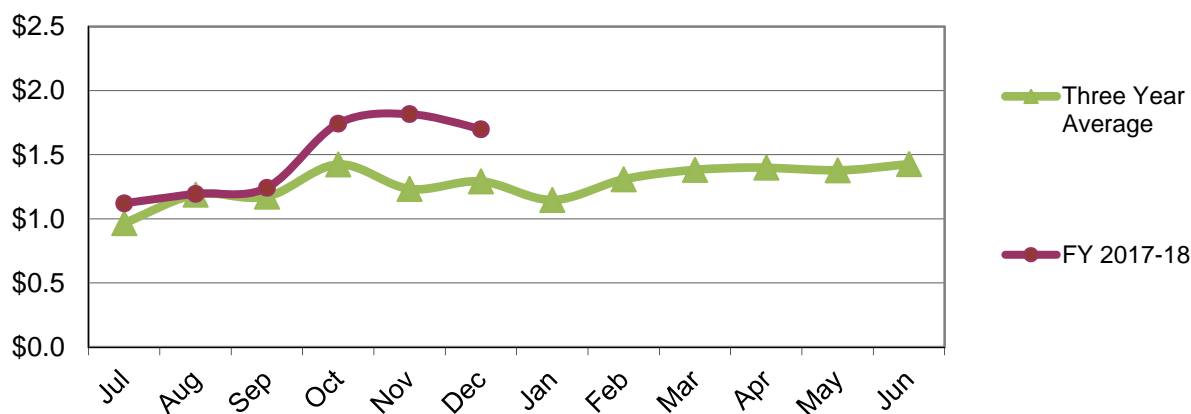
P5CA Program Revenue by Month

Shown in Millions



P5CA Program Expense by Month

Shown in Millions



Portland Expo Center

Expo December event revenues were \$230,000, less than recent months but comparable to prior years. Food and beverage had a negative margin because there wasn't enough activity to cover overhead costs, but this is common at Expo in December. Expo's YTD food and beverage margin is 7.9%, above the prior YTD margin of 5.7%. Expenses, excluding debt service, are at 46% of budget, slightly above the 44% rate we were at last December. Overall net operations are negative \$580,000, however that is expected to improve during the upcoming busy months. The rental revenue budget projects 57% of revenue will come in January-June 2018.

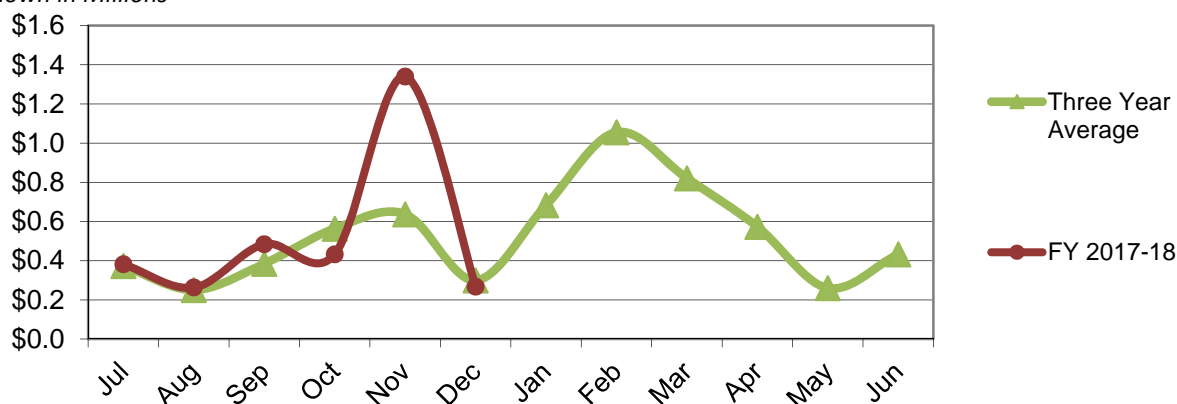
Highest Grossing Events

Event*	Gross Event Revenue	% of Event Revenue
America's Largest Christmas Bazaar	\$111,604	51%
Collectors West Gun and Knife Show	28,328	13%
Varsity All Stars & All Things Cheer	24,976	11%
Blacklight Yoga by Soul Pose	11,143	5%
All other Events	43,934	20%
Total Event Revenues	\$219,984	100%

*Note: revenue reported in the table above reflects event receipts in the reporting month only and not total gross event revenue or total gross monthly revenue.

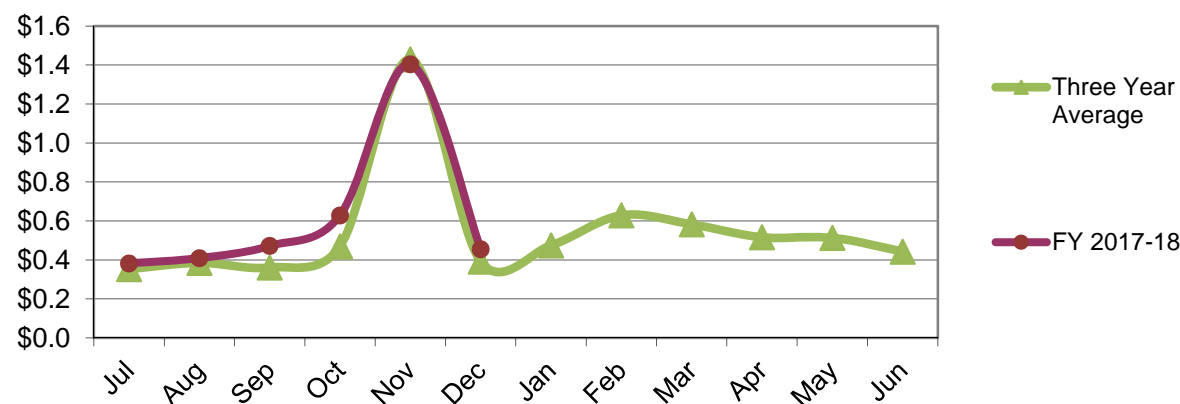
Expo Program Revenue by Month

Shown in Millions



Expo Program Expense by Month

Shown in Millions



MERC Statement of Activity with Annual Budget

Metropolitan Exposition-Recreation Commission

All Departments

December 2017

	Current Month Actual	Prior Year Month Actual	Current Year to Date Actual	Prior Year to Date Actual	Current Year Budget	% of Prior Year	% of Annual Budget
Operations							
Charges for Services	1,777,541	1,820,182	13,457,437	12,860,734	28,783,091	104.64%	46.75%
Contributions from Governments	-	-	-	-	889,441	0.00%	0.00%
Contributions from Private Sources	-	-	300,000	-	75,000	0.00%	400.00%
Enhanced Marketing VDF	-	-	-	-	491,122	0.00%	0.00%
Food and Beverage Revenue	1,159,205	1,057,223	8,768,154	8,488,316	18,524,543	103.30%	47.33%
Grants	3,000	5,925	137,553	8,055	38,000	1707.67%	361.98%
Interest Earnings	56,539	39,735	295,846	101,453	445,000	291.61%	66.48%
Lodging Tax	2,157,905	1,694,772	8,234,927	7,521,522	13,052,470	109.48%	63.09%
Miscellaneous Revenue	13,141	14,744	63,389	73,071	113,765	86.75%	55.72%
Transfers-R	33,333	23,333	199,998	139,998	400,000	142.86%	50.00%
Visitor Development Fund Alloc	-	-	2,000,000	-	4,488,395	0.00%	44.56%
Total Revenues	5,200,664	4,655,913	33,457,303	29,193,149	67,300,827	114.61%	49.71%
Food & Beverage Services	1,183,251	1,023,530	7,478,561	6,821,490	15,252,656	109.63%	49.03%
Materials and Services	1,429,017	1,310,893	8,418,382	7,602,778	18,326,503	110.73%	45.94%
Personnel Services	1,748,437	1,591,893	10,305,319	9,653,423	22,106,786	106.75%	46.62%
Transfers-E	384,096	338,918	3,223,526	3,179,635	5,830,412	101.38%	55.29%
Visitor Development Marketing	-	-	2,000,000	-	2,508,282	0.00%	79.74%
Total Expenditures	4,744,801	4,265,234	31,425,787	27,257,325	64,024,639	115.29%	49.08%
Net Operations	455,863	390,679	2,031,516	1,935,824	3,276,188		
Capital							
Contributions from Private Sources	-	318,750	-	318,750	762,501	0.00%	0.00%
Grants	-	-	-	18,464	-	0.00%	0.00%
Lodging Tax	-	-	-	-	6,741,441	0.00%	0.00%
Miscellaneous Revenue	2,290	-	2,290	4,317	-	53.03%	0.00%
Transfers-R	-	26,667	-	160,002	-	0.00%	0.00%
Total Revenues	2,290	345,417	2,290	501,533	7,503,942	0.46%	0.03%
Capital Outlay	239,234	138,094	2,326,639	1,879,423	15,768,548	123.80%	14.75%
Materials and Services	153,445	-	1,437,392	222	1,141,867	646891.15%	125.88%
Total Expenditures	392,679	138,094	3,764,031	1,879,645	16,910,415	200.25%	22.26%
Net Capital	(390,390)	207,323	(3,761,742)	(1,378,112)	(9,406,473)		
12 Month Fund Balance Increase	65,473	598,002	(1,730,226)	557,712	(6,130,285)		

MERC Statement of Activity with Annual Budget

Metropolitan Exposition-Recreation Commission

Convention Center Operating Fund

December 2017

	Current Month Actual	Prior Year Month Actual	Current Year to Date Actuals	Prior Year to Date Actual	Current Year Budget	% of Prior Year to Date	% of Annual Budget
Operations							
Charges for Services	577,489	514,812	5,611,345	4,872,356	11,789,193	115.2%	47.6%
Contributions from Private Sources	-	-	300,000	-	-	0.0%	0.0%
Enhanced Marketing VDF	-	-	-	-	491,122	0.0%	0.0%
Food and Beverage Revenue	648,043	601,132	6,305,616	5,927,369	13,050,157	106.4%	48.3%
Grants	3,000	5,925	87,553	8,055	-	1086.9%	0.0%
Interest Earnings	26,514	14,428	123,631	33,724	190,000	366.6%	65.1%
Lodging Tax	1,919,421	1,507,260	7,324,833	6,689,328	11,661,784	109.5%	62.8%
Miscellaneous Revenue	2,294	6,268	26,681	29,690	17,700	89.9%	150.7%
Transfers-R	(78,161)	(67,396)	(468,963)	(404,375)	(937,926)	116.0%	50.0%
Visitor Development Fund Alloc	-	-	2,000,000	-	3,784,454	0.0%	52.8%
Total Revenues	3,098,602	2,582,429	21,310,696	17,156,147	40,046,484	124.2%	53.2%
Food & Beverage Services	729,094	675,601	5,508,646	4,857,500	10,840,964	113.4%	50.8%
Materials and Services	683,156	625,944	3,970,947	3,722,492	9,848,744	106.7%	40.3%
Personnel Services	849,776	779,145	5,332,383	4,934,246	11,199,173	108.1%	47.6%
Transfers-E	219,750	199,731	1,318,500	1,240,370	2,830,488	106.3%	46.6%
Visitor Development Marketing	-	-	2,000,000	-	2,491,122	0.0%	80.3%
Total Expenditures	2,481,776	2,280,422	18,130,477	14,754,608	37,210,491	122.9%	48.7%
Net Operations	616,826	302,007	3,180,220	2,401,539	2,835,993		
Capital							
Contributions from Private Sources	-	199,219	-	199,219	476,563	0.0%	0.0%
Grants	-	-	-	7,500	-	0.0%	0.0%
Miscellaneous Revenue	2,290	-	2,290	4,317	-	53.0%	0.0%
Transfers-R	4,000,000	26,667	8,000,000	160,002	16,000,000	4999.9%	50.0%
Total Revenues	4,002,290	225,886	8,002,290	371,038	16,476,563	2156.7%	48.6%
Capital Outlay	159,805	69,213	874,879	677,295	9,200,500	129.2%	9.5%
Materials and Services	149,783	-	353,053	222	355,000	158889.8%	99.5%
Total Expenditures	309,588	69,213	1,227,932	677,517	9,555,500	181.2%	12.9%
Net Capital	3,692,701	156,673	6,774,358	(306,479)	6,921,063		
12 Month Fund Balance Increase	4,309,527	458,680	9,954,578	2,095,060	9,757,056		

MERC Statement of Activity with Annual Budget

Metropolitan Exposition-Recreation Commission

Portland'5 Centers for the Arts Fund

December 2017

	Current Month Actual	Prior Year Month Actual	Current Year to Date Actuals	Prior Year to Date Actual	Current Year Budget	% of Prior Year to Date	% of Annual Budget
Operations							
Charges for Services	1,045,425	1,109,010	5,824,928	6,321,213	12,170,223	92.1%	47.9%
Contributions from Governments	-	-	-	-	889,441	0.0%	0.0%
Contributions from Private Sources	-	-	-	-	75,000	0.0%	0.0%
Food and Beverage Revenue	435,432	383,194	1,538,257	1,815,761	3,175,764	84.7%	48.4%
Grants	-	-	-	-	38,000	0.0%	0.0%
Interest Earnings	15,572	13,342	85,592	35,235	170,000	242.9%	50.3%
Lodging Tax	238,484	187,512	910,094	832,193	1,390,686	109.4%	65.4%
Miscellaneous Revenue	8,275	4,600	23,468	29,294	61,590	80.1%	38.1%
Transfers-R	(40,519)	(36,852)	(243,113)	(221,113)	(486,226)	109.9%	50.0%
Visitor Development Fund Alloc	-	-	-	-	703,941	0.0%	0.0%
Total Revenues	1,702,668	1,660,806	8,139,226	8,812,584	18,188,419	92.4%	44.7%
Food & Beverage Services	302,984	238,105	1,118,809	1,261,281	2,503,553	88.7%	44.7%
Materials and Services	607,498	546,326	3,474,748	3,063,484	6,323,561	113.4%	54.9%
Personnel Services	678,893	634,921	3,564,915	3,512,363	7,862,673	101.5%	45.3%
Transfers-E	110,177	96,587	661,062	603,742	1,322,109	109.5%	50.0%
Total Expenditures	1,699,553	1,515,939	8,819,535	8,440,870	18,011,896	104.5%	49.0%
Net Operations	3,116	144,867	(680,309)	371,714	176,523		
Capital							
Contributions from Private Sources	-	71,719	-	71,719	114,375	0.0%	0.0%
Grants	-	-	-	9,964	-	0.0%	0.0%
Total Revenues	-	71,719	-	81,683	114,375	0.0%	0.0%
Capital Outlay	47,731	31,430	1,215,515	924,088	3,450,733	131.5%	35.2%
Materials and Services	-	-	113,946	-	325,000	0.0%	35.1%
Total Expenditures	47,731	31,430	1,329,461	924,088	3,775,733	143.9%	35.2%
Net Capital	(47,731)	40,289	(1,329,461)	(842,405)	(3,661,358)		
12 Month Fund Balance Increase	(44,615)	185,156	(2,009,769)	(470,691)	(3,484,835)		

MERC Statement of Activity with Annual Budget

Metropolitan Exposition-Recreation Commission

Expo Fund

December 2017

		Current Month Actual	Prior Year Month Actual	Current Year to Date Actuals	Prior Year to Date Actual	Current Year Budget	% of Prior Year to Date	% of Annual Budget
Operations								
Charges for Services		154,627	196,360	2,021,164	1,667,166	4,823,675	121.2%	41.9%
Food and Beverage Revenue		75,730	72,896	924,280	745,185	2,298,622	124.0%	40.2%
Interest Earnings		1,814	2,061	12,069	4,137	35,000	291.7%	34.5%
Miscellaneous Revenue		2,572	3,876	13,239	14,087	34,475	94.0%	38.4%
Transfers-R		33,333	23,333	199,998	139,998	400,000	142.9%	50.0%
Total Revenues		268,076	298,526	3,170,750	2,570,573	7,591,772	123.3%	41.8%
Food & Beverage Services		151,173	109,824	851,106	702,709	1,908,139	121.1%	44.6%
Materials and Services		108,116	114,186	739,580	624,111	1,615,813	118.5%	45.8%
Personnel Services		141,910	135,245	924,148	859,265	1,939,455	107.6%	47.6%
Transfers-E		53,984	42,425	1,237,354	1,329,473	1,670,090	93.1%	74.1%
Visitor Development Marketing		-	-	-	-	17,160	0.0%	0.0%
Total Expenditures		455,184	401,680	3,752,187	3,515,558	7,150,657	106.7%	52.5%
Net Operations		(187,108)	(103,154)	(581,437)	(944,985)	441,115		
Capital								
Contributions from Private Sources		-	47,813	-	47,813	171,563	0.0%	0.0%
Grants		-	-	-	1,000	-	0.0%	0.0%
Transfers-R		712,500	-	1,425,000	-	2,850,000	0.0%	50.0%
Total Revenues		712,500	47,813	1,425,000	48,813	3,021,563	2919.3%	47.2%
Capital Outlay		31,699	37,452	236,245	278,040	2,867,315	85.0%	8.2%
Materials and Services		3,661	-	970,393	-	461,867	0.0%	210.1%
Total Expenditures		35,360	37,452	1,206,639	278,040	3,329,182	434.0%	36.2%
Net Capital		677,140	10,361	218,361	(229,228)	(307,619)		
12 Month Fund Balance Increase		490,032	(92,793)	(363,076)	(1,174,212)	133,496		

MERC Statement of Activity with Annual Budget

Metropolitan Exposition-Recreation Commission

MERC Admin Sub Fund

December 2017

		Current Month Actual	Prior Year Month Actual	Current Year to Date Actuals	Prior Year to Date Actual	Current Year Budget	% of Prior Year to Date	% of Annual Budget
Operations								
Grants		-	-	50,000	-	-	0.0%	0.0%
Interest Earnings		12,639	9,904	74,555	28,357	50,000	262.9%	149.1%
Transfers-R		118,679	104,248	712,076	625,488	1,424,152	113.8%	50.0%
	Total Revenues	131,318	114,152	836,631	653,845	1,474,152	128.0%	56.8%
Materials and Services		30,247	24,436	233,106	192,691	538,385	121.0%	43.3%
Personnel Services		77,857	42,582	483,872	347,549	1,105,485	139.2%	43.8%
Transfers-E		185	175	6,610	6,050	7,725	109.3%	85.6%
	Total Expenditures	108,289	67,193	723,589	546,290	1,651,595	132.5%	43.8%
<hr/>								
	Net Operations	23,029	46,959	113,042	107,556	(177,443)		
Capital								
Lodging Tax		-	-	-	-	6,741,441	0.0%	0.0%
Transfers-R		(4,712,500)	-	(9,425,000)	-	(18,850,000)	0.0%	50.0%
	Total Revenues	(4,712,500)	-	(9,425,000)	-	(12,108,559)	0.0%	77.8%
Capital Outlay		-	-	-	-	250,000	0.0%	0.0%
	Total Expenditures	-	-	-	-	250,000	0.0%	0.0%
<hr/>								
	Net Capital	(4,712,500)	-	(9,425,000)	-	(12,358,559)		
<hr/>								
	12 Month Fund Balance Increase	(4,689,471)	46,959	(9,311,958)	107,556	(12,536,002)		

MERC Food and Beverage Margins

December 2017

	Current Month Actual	Prior Year Month Actual	Current Year to Date	Prior Year to Date Actual	Annual Budget
Convention Center Operating Fund					
Food and Beverage Revenue	648,043	601,132	6,305,616	5,927,369	13,050,157
Food & Beverage Services	729,094	675,601	5,508,646	4,857,500	10,840,964
Food and Beverage Gross Margin	(81,050)	(74,469)	796,970	1,069,869	2,209,193
Food and Beverage Gross Margin %	-12.51%	-12.39%	12.64%	18.05%	16.93%
Portland'5 Centers for the Arts Fund					
Food and Beverage Revenue	435,432	383,194	1,538,257	1,815,761	3,175,764
Food & Beverage Services	302,984	238,105	1,118,809	1,261,281	2,503,553
Food and Beverage Gross Margin	132,447	145,089	419,448	554,480	672,211
Food and Beverage Gross Margin %	30.42%	37.86%	27.27%	30.54%	21.17%
Expo Fund					
Food and Beverage Revenue	75,730	72,896	924,280	745,185	2,298,622
Food & Beverage Services	151,173	109,824	851,106	702,709	1,908,139
Food and Beverage Gross Margin	(75,444)	(36,927)	73,175	42,477	390,483
Food and Beverage Gross Margin %	-99.62%	-50.66%	7.92%	5.70%	16.99%
MERC Fund Total					
Food and Beverage Revenue	1,159,205	1,057,223	8,768,154	8,488,316	18,524,543
Food & Beverage Services	1,183,251	1,023,530	7,478,561	6,821,490	15,252,656
Food and Beverage Gross Margin	(24,046)	33,693	1,289,593	1,666,826	3,271,887
Food and Beverage Gross Margin %	-2.07%	3.19%	14.71%	19.64%	17.66%

MERC Statement of Fund Balances and Reserves

December 2017

	Annual Basis			Monthly Basis	
	FY 2016-17 Actuals	FY 2017-18 Budget	FY 2017-18 YTD Actuals	FY 2016-17 November	FY 2017-18 November
<u>Oregon Convention Center</u>					
Beginning Fund Balance	21,770,042	24,966,039	25,024,238	23,406,421	30,669,289
Fund Balance Inc (Dec)	3,254,196	9,757,056	9,954,578	458,680	4,309,527
Ending Fund Balance	25,024,238	34,723,095	34,978,816	23,865,101	34,978,816
<i>Contingency - Operating</i>		1,500,000			
<i>Contingency - New Capital-Business Strategy</i>		2,092,301			
<i>Contingency - Renewal & Replacement</i>		31,130,794			
Ending Fund Balance		34,723,095			
<u>Portland's Centers for the Arts</u>					
Beginning Fund Balance	13,178,660	13,293,035	12,883,997	12,522,812	10,918,842
Fund Balance Inc (Dec)	(294,663)	(2,038,222)	(2,009,770)	185,156	(44,615)
Ending Fund Balance	12,883,997	11,254,813	10,874,227	12,707,968	10,874,227
<i>Contingency - Operating</i>		600,000			
<i>Contingency - New Capital-Business Strategy</i>		2,263,311			
<i>Contingency - Renewal & Replacement</i>		8,391,502			
Ending Fund Balance		11,254,813			
<u>Expo</u>					
Beginning Fund Balance	2,843,104	2,527,012	1,941,946	1,761,685	1,088,838
Fund Balance Inc (Dec)	(901,158)	395,988	(363,076)	(92,793)	490,032
Ending Fund Balance	1,941,946	2,923,000	1,578,870	1,668,892	1,578,870
<i>Contingency - Operating</i>		662,730			
<i>Contingency - New Capital-Business Strategy</i>		2,260,270			
<i>Contingency - Renewal & Replacement</i>		-			
Ending Fund Balance		2,923,000			
<u>MERC Administration</u>					
Beginning Fund Balance	14,171,403	18,757,585	18,573,659	14,232,000	13,951,171
Fund Balance Inc (Dec)	4,402,256	(12,536,002)	(9,311,958)	46,959	(4,689,471)
Ending Fund Balance	18,573,659	6,221,583	9,261,700	14,278,959	9,261,700
<i>Contingency - Operating</i>		53,460			
<i>Contingency - Renewal & Replacement</i>		1,056,059			
<i>Contingency - TLT Pooled Capital</i>		5,112,064			
Ending Fund Balance		6,221,583			
<u>MERC Fund</u>					
Beginning Fund Balance	51,963,209	59,543,671	58,423,839	51,922,918	56,628,140
Fund Balance Inc (Dec)	6,460,630	(4,421,180)	(1,730,226)	598,002	65,473
Ending Fund Balance	58,423,839	55,122,491	56,693,613	52,520,920	56,693,613

**MERC Visitor Venues
Events-Performances-Attendance
FY 2017-18**

	December 2014		December 2015		December 2016		December 2017		Net Change from Prior Year		December 2017	
OCC	Events	Attendance	Events	Attendance	Events	Attendance	Events	Attendance	Events	Attendance	Revenue	% of Rev.
Tradeshows/Conventions	3	2,109	5	9,124	6	6,352	5	6,072	(1)	(280)	381,186	35%
Consumer Public Shows	6	32,819	4	31,373	4	27,978	2	22,855	(2)	(5,123)	154,547	14%
Miscellaneous									-	-	-	0%
Miscellaneous -In-House	14	349	21	514	7	458	18	424	11	(34)	7,853	1%
Meetings	14	5,193	6	3,090	9	2,078	13	3,057	4	979	167,072	15%
Catering	12	5,241	10	6,119	6	4,177	7	4,819	1	642	371,992	34%
Totals	49	45,711	46	50,220	32	41,043	45	37,227	13	(3,816)	1,082,650	100%

	December 2014		December 2015		December 2016		December 2017		Net Change from Prior Year		December 2017	
Expo Center	Events	Attendance	Events	Attendance	Events	Attendance	Events	Attendance	Events	Attendance	Revenue	% of Rev.
Consumer Public Shows	2	34,144	2	34,953	3	32,888	3	32,689	-	(199)	165,706	75%
<i>Cirque Du Soleil</i>	-	-	-	-	-	-	-	-	-	-	-	0%
Miscellaneous	4	2,000	1	1,238	1	596	3	3,075	2	2,479	51,626	23%
Meetings	1	24	2	85	1	26	1	15	-	(11)	-	0%
Catering	-	-	-	-	-	-	-	-	-	-	-	0%
Tradeshows/Conventions	-	-	-	-	-	-	-	-	-	-	2,652	1%
Totals	7	36,168	5	36,276	5	33,510	7	35,779	2	2,269	219,984	100%
Totals w/Cirque du Soleil	7	36,168	5	36,276	5	33,510	7	35,779	2	2,269	219,984	100%

	December 2014		December 2015		December 2016		December 2017		Net Change from Prior Year		December 2017	
Portland '5	Performances	Attendance	Performances	Attendance	Performances	Attendance	Performances	Attendance	Performances	Attendance	Revenue	% of Rev.
Commercial (Non-Broadway)	3	3,672	10	13,981	31	17,113	23	25,402	(8)	8,289	523,566	37%
Broadway	-	-	8	18,255	3	6,662	-	-	(3)	(6,662)	266,592	19%
Resident Company	31	66,356	32	68,303	32	64,268	33	70,000	1	5,732	419,622	30%
Non-Profit	50	13,613	24	11,890	30	13,794	24	15,120	(6)	1,326	184,953	13%
Promoted/Co-Promoted	1	98	2	330	4	2,855	2	1,955	(2)	(900)	(9,672)	-1%
Student	-	-	-	-	-	-	-	-	-	-	11,174	1%
Miscellaneous	-	-	-	-	-	-	1	50	1	50	-	0%
Totals	85	83,739	76	112,759	100	104,692	83	112,527	(17)	7,835	1,396,235	100%

OCC Capital Project Status Report

Project Phases: **Planning** - Initiating/Planning, **Design** - Design & Engineering, **Contracting** - in process of vendor selection & signing contract with selected vendor, **Construction/In Progress** - in progress, **Complete** - substantially complete, **Ongoing** - capital maintenance

Category			FY 2017-18 Budget		
Project Title	Management	Phase	Amended	Actual	Est. Variance
Food & Beverage					
Food & Beverage Point of Sale System (POS) Replacement	ARA / IS	Contracting	230,000	-	230,000
Renewal & Replacement					
Plaza, Entries, & Major Interior Remodel	CPMO	Design	6,000,000	598,732	5,401,268
Building Envelop Assessment	CPMO	Contracting	150,000	-	150,000
Cooling System Design Consulting (Cooling Towers & Chillers)	CPMO	Design	80,000	10,374	69,626
Loading Dock Improvements (Dock Locks, Enclosures, Levelers)	CPMO	Contracting	360,000	14,436	345,564
Movable Partition Refurbishment	OCC	In Progress	180,000	21,606	158,394
Staff & Setup Supervisor Support Space Renovation	CPMO	In Progress	644,000	192,032	451,968
Security & Access					
Security Camera Replacements	CPMO	Contracting	450,000	-	450,000
Alerton Global Controller & Software Upgrade	OCC	Ongoing	70,000	66,701	3,299
Integrated Door Access Controls	CPMO	Planning	300,000	-	300,000
Life & Safety					
Telecom MDF Fire Suppression Upgrade	OCC	On hold	55,000	-	55,000
Emergency Notification Upgrade	OCC	Complete	41,000	23,135	17,865
Fire Sprinkler System Design Consulting	OCC	Planning	50,000	-	50,000
Lighting & Electrical					
Exhibit Hall Lighting Control Replacement	CPMO	Design	275,000	25,040	249,960
Technology					
Telephone - Voice Over Internet Protocol (VOIP) Implementation	IS	Construction	352,500	33,594	318,906
Equipment					
AV Equipment	OCC	Ongoing	150,000	159,955	(9,955)
Tug Tow Tractor Purchase	OCC	In Progress	28,000	-	28,000
480V Show Equipment	OCC	In Progress	90,000	-	90,000
Holladay Suites Furniture Purchase	OCC	Planning	50,000	4,715	45,285
Total			9,555,500	1,150,320	8,405,180
% of Budget				12%	88%
Project Phase Totals	# of Proj	% of Total			
Projects in Planning or Design phases	6	38%			
Projects in Contracting or Construction/In Progress phases	9	56%			
Completed Projects	1	6%			

Portland'5 Center Capital Project Status Report

Project Phases: **Planning** - Initiating/Planning, **Design** - Design & Engineering, **Contracting** - in process of vendor selection & signing contract with selected vendor, **Construction/In Progress** - in progress, **Complete** - substantially complete, **Ongoing** - capital maintenance

Category	Project Title	Management	Phase	FY 2017-18 Budget		
				Amended	Actuals	Remaining
Food & Beverage						
85108	ArtBar Bar Replacement (Aramark)	CPMO	Cancelled	75,000	-	75,000
85110	Aramark Point Of Sale System Replacement	ARA / IS	Contracting	130,000	-	130,000
Venue Management						
8R089	Newmark Lighting Overhaul	P5	Complete	673,063	499,246	173,817
8R090	Winningstad - House Lighting Control & Dimmers	P5	Complete	273,550	322,375	(48,825)
8R143	Newmark LED Cyclorama Light Fixtures	P5	Complete	70,000	69,810	190
8R176	AHH Brunish Theater Electrical Improvements	P5	Complete	50,000	53,994	(3,994)
8R181	AHH, ASCH, Keller Assisted Listening System	P5	Complete	58,000	58,802	(802)
8R182	AHH, ASCH, Keller ADA Signage	P5	Planning	50,000	-	50,000
8R183	ASCH Soft Goods	P5	Design	100,000	-	100,000
8R184	Keller Balcony Front Fill Speakers	P5	Planning	50,000	-	50,000
8R185	Aerial Work Platform (Scissor lift)	P5	Complete	20,000	10,439	9,561
8R186	Banquet Chairs Replacement	P5	Planning	20,000	-	20,000
8R201	Keller light replacements	P5	In Progress	12,000	-	12,000
CpMO Management						
8R098	Keller - Roof & Drains Replacement	CPMO	Complete	90,000	27,973	62,027
8R099	ASCH - Portland Sign Assessment & Refurb Scoping	CPMO	Complete	150,000	171,609	(21,609)
8R092	Schnitzer Orchestra Shell Replacement	CPMO	Design	1,355,000	48,347	1,306,653
8R178	All Buildings Access Controls CCTV Replacement	CPMO	Construction	200,000	-	200,000
8R179	AHH Roof, Green Roof	CPMO	Design	150,000	16,825	133,175
8R120	ASCH - Cooling System Replacement	CPMO	Cancelled	10,000	-	10,000
8R177	ASCH Audience Chamber Lighting	CPMO	Design	25,000	14,289	10,711
Information Technology						
65701B	AHH/ASCH/Keller VOIP Implementation	IS	Design	72,600	-	72,600
65701C	AHH/ASCH/Keller VOIP Implementation	IS	Design	141,520	-	141,520
Total				3,775,733	1,293,709	2,482,024
% of Budget					34%	66%
Project Phase Totals		# of Proj	% of Total			
Projects in Planning or Design phases		9	45%			
Projects in Contracting or Construction/In Progress phases		3	15%			
Completed Projects		8	40%			

Expo Center Capital Project Status Report

Project Phases: **Planning** - Initiating/Planning, **Design** - Design & Engineering, **Contracting** - in process of vendor selection & signing contract with selected vendor, **Construction/In Progress** - in progress, **Complete** - substantially complete, **Ongoing** - capital maintenance

Category	Project Title	Management	Phase	FY 2017-18 Budget		
				Amended	Actuals	Remaining
Food & Beverage						
85106	Connector Glass Door (ARA)	CPMO	Design	120,000	9,926	110,074
85107	Concessions Upgrades (ARA)	EXPO	Planning	50,000	-	50,000
85110	Aramark Point of Sale System Replacement	IS	Contracting	160,000	-	160,000
Renewal & Replacement						
8N020	Audio Visual Equipment	EXPO	Ongoing	11,867	-	11,867
8R040	Parking Lot Asphalt	CPMO	Ongoing	135,000	-	135,000
8R151	Expo Water Efficiency Upgrades	EXPO	Construction	80,000	-	80,000
8R169	Halls ABCDE Lighting Controls study and Replacement	CPMO	Planning	20,000	-	20,000
8R170	New Hall A Shore Power	CPMO	Complete	150,000	217,741	(67,741)
8R171	Interior & Exterior Lighting Replacements	EXPO	Planning	70,000	-	70,000
8R172	Hall C HVAC Study	CPMO	Planning	35,000	-	35,000
8R173	Halls ABCDE HVAC Controls Replacement	EXPO	Planning	60,000	-	60,000
8R202	PGE Upgrades	CPMO	Planning	100,000	-	100,000
Roofing						
8R135	ABC Roof Repairs (R&R)	EXPO	Ongoing	80,000	-	80,000
8R136	Halls D & E Roof Replacement (R&R)	CPMO	Construction	1,919,689	968,995	950,694
Equipment						
8N011	Electronic Signage	CPMO	In Progress	47,548	689	46,859
8R112	Security Camera Access Control System	CPMO	In Progress	82,138	-	82,138
8R150	Radio Replacements	EXPO	Ongoing	20,000	-	20,000
Information Technology						
65701B	Voice Over IP (VoIP) Infrastructure	IS	In Progress	107,940	5,928	102,012
8R139	WiFi Upgrade	EXPO	Ongoing	80,000	-	80,000
Total				3,329,182	1,203,279	2,125,903
% of Budget					36%	64%
Project Phase Totals		# of Proj	% of Total			
Projects in Planning or Design phases		7	50%			
Projects in Contracting or Construction/In Progress phases		6	43%			
Completed Projects		1	7%			

MERC Commission Meeting

February 7, 2018
12:30 pm

7.0 FY2016-2017
Financial Audit



Audit Results

Better Together: Moss Adams & MERC

[illegible]

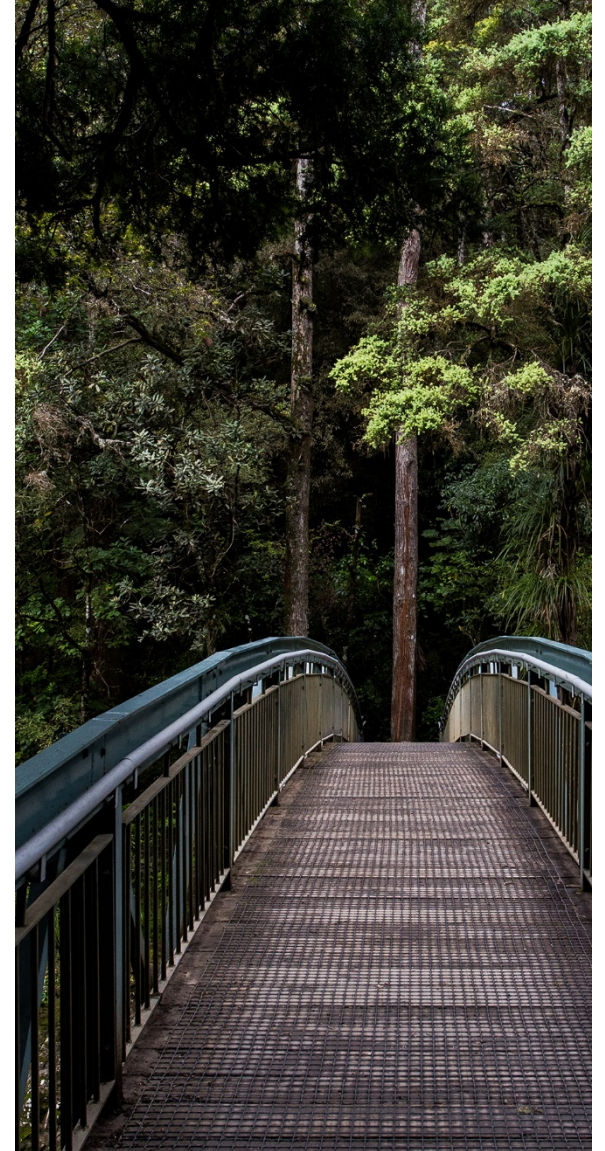


Agenda

1. Auditor Opinions and Reports
2. Required Communication with Those Charged with Governance
3. Other Information



Auditor Opinions & Reports



Auditor Report on the Financial Statement

Report of Independent Auditors

- Unmodified opinion
- Financial statements are presented fairly in accordance with US GAAP



Other Auditor Reports – Single Audit



GAGAS Report on Internal Control Over Financial Reporting and on Compliance and Other Matters

- No financial reporting findings
- No compliance findings

Report on Compliance with Requirements that could have a Direct and Material Effect on the Major Federal Program and on Internal Control Over Compliance in accordance with the Uniform Guidance for Federal Awards (2 CFR Part 200)

- No control findings
- No compliance findings

Other Auditor Reports – Oregon Minimum Standards and Bond Expenditures

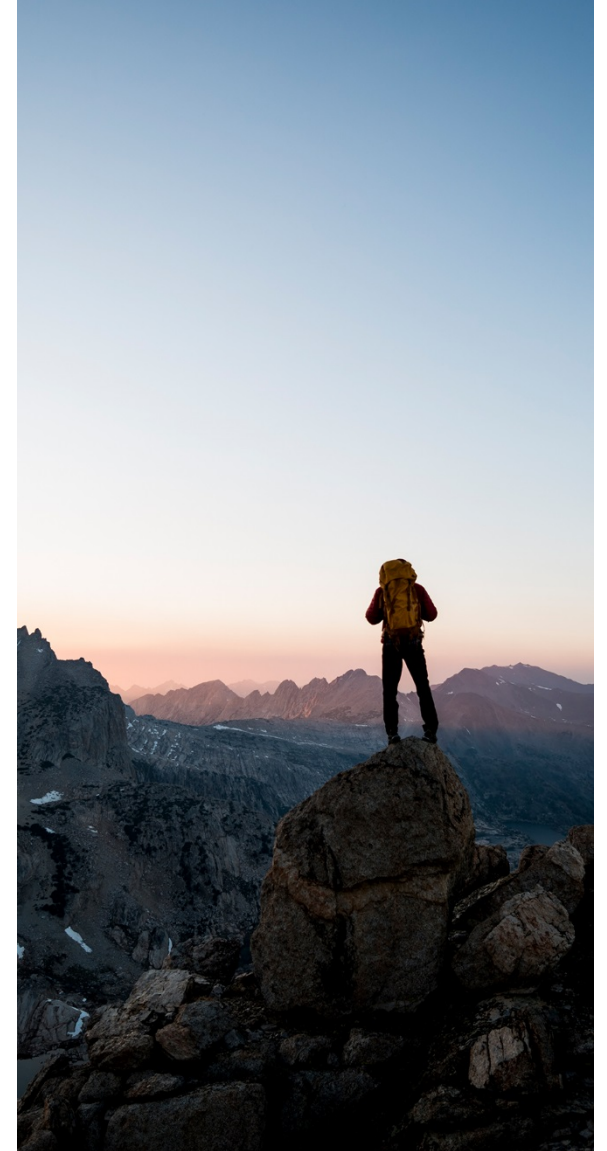
Report on Compliance and on Internal Control over Financial Reporting Based on an Audit of Financial Statements in Accordance with Oregon Municipal Auditing Standards

- No control findings
- No instances of non-compliance





Communication with Those Charged with Governance





COMMUNICATION WITH GOVERNING BODY

Deficiencies in Internal Control

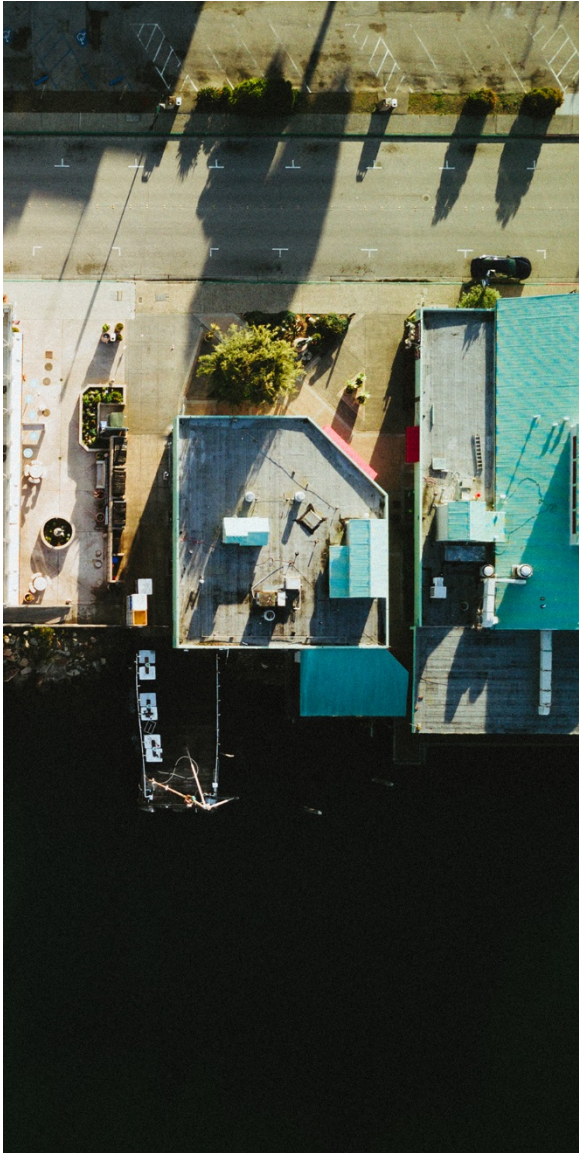
Any material weaknesses and significant deficiencies in the design or operation of internal control that came to the auditor's attention during the audit must be reported to the Audit Committee.

Our Comments

- **Material weakness**
 - None noted
- **Significant deficiencies & non-compliance**
 - None noted
- **Current year best practice recommendations**
 - Account reconciliations
 - Accounts receivable allowance
 - Unrecorded accounts payable
- **Prior year best practice recommendations**
 - Unrecorded accounts payable – *not resolved*
 - Physical inventory of capital assets – *resolved*
 - Budgetary over expenditure in the risk management fund – *resolved*



Accounting Update



New Standards

GASB Statement No. 75, Accounting and Financial Reporting for Postemployment Benefits Other Than Pensions – effective for June 30, 2018 fiscal year

GASB Statement No. 81, Irrevocable Split-Interest Agreements – effective for June 30, 2018 fiscal year

GASB Statement No. 83, Certain Asset Retirement Obligations – effective for June 30, 2019 fiscal year

GASB Statement No. 84, Fiduciary Activities – effective for June 30, 2020 fiscal year

GASB Statement No 85, Omnibus 2017 – effective for June 30, 2018 fiscal year

GASB Statement No. 86, Certain Debt Extinguishment Issues – effective for June 30, 2018 fiscal year

GASB Statement No. 87, Leases – effective for June 30, 2021 fiscal year

Contact Us



+

Jim Lanzarotta

+

Ashley Osten

+

james.lanzarotta@mossadams.com
(541) 225-6070

ashley.osten@mossadams.com
(503) 478-2251



THANK
YOU

MERC Commission Meeting

February 7, 2018
12:30 pm

10.0 Consent Agenda

Metropolitan Exposition Recreation Commission
Record of MERC Commission Actions
January 3, 2018
Portland's Centers for the Arts, Brunish Theater

Present:	Karis Stoudamire-Phillips, Deidra Krys-Rusoff, John Erickson, Deanna Palm, Damien Hall, Dañel Malán
Absent:	Ray Leary
	A regular meeting of the Metropolitan Exposition Recreation Commission was called to order by Chair Karis Stoudamire-Phillips at 12:46 p.m.
1.0	QUORUM CONFIRMED A quorum of Commissioners was present.
2.0	OPPORTUNITY FOR PUBLIC COMMENT ON NON-AGENDA ITEMS None
3.0	COMMISSION AND COUNCIL COMMUNICATIONS <ul style="list-style-type: none"> Chair Stoudamire-Phillips offered her thanks to Councilor Sam Chase, who is leaving the post of Metro Council Liaison to the Commission due to time constraints. Chase thanked the Commission for its work and explained that his schedule has become full due to his work with Metro Council on affordable housing. Stoudamire-Phillips then introduced Council President Tom Hughes who has been named as Chase's replacement as Metro Council Liaison to MERC. Stoudamire-Phillips welcomed John Erickson to the Commission.
4.0	GM COMMUNICATIONS Cruikshank provided these updates: <ul style="list-style-type: none"> Provided background of new commissioner, John Erickson. Reminded the commission that the MERC retreat is scheduled for Jan. 19. Heather Back will start as the new Communications and Policy Development Manager on January 8. The recruitment for Metro Deputy Chief Operating Officer is underway and the interview process has begun. Metro Councilor Carlotta Collette has announced her retirement. Her last day is tomorrow. Stephanie Soden, former MERC Communications manager and Chief of Staff for Council President Hughes, is leaving Metro to work as Chief of Staff to the new Portland Public Schools Superintendant. The first Budget Committee meeting for the FY19 budget is scheduled for January 24 at the Oregon Convention Center.
5.0	FINANCIAL REPORT Rachael Lembo, MERC Financial Manager, presented the report.
6.0	VENUE BUSINESS REPORTS Robyn Williams, Matthew P. Rotchford and Craig Stroud updated the Commission on venue business.
7.0	EXPO AND PORTLAND'S PROJECTS UPDATE Ben Rowe reported progress to date on the two projects. He started with the Expo project. <ul style="list-style-type: none"> Commissioner Stoudamire-Phillips asked which commissioners would serve on the Expo Project committee. Rowe responded that they are not yet to the point of making that decision however he had planned to ask the Commission's Expo liaisons to fill that role. Commissioner Malán inquired about the impact of Columbia River Crossing (CRC) on the Expo campus as well as the impact on any long-term leasers that might consider the location. Rowe stated that they don't expect any impact on Hall B or the west side of the campus which is where leased space would be available.

	<ul style="list-style-type: none"> • Council President Hughes and Expo Director, Matthew P. Rotchford, added some thoughts on the possible impacts on the levee in the event of a flood and whether a levy would be proposed to fund levee flood protection. • Commissioner Krys-Rusoff inquired whether Metro or MERC had representation on the CRC committee. Rotchford stated that several MERC and Metro employees were present. • Malán inquired whether a parking garage was considered for the Expo site adding that it would save campus space if the parking space was vertical. Rotchford responded that building a garage is cost-prohibitive. • Commissioner Krys-Rusoff inquired whether performing groups had considered using Expo space since she had heard that there was a lack of performance space in the area. Rotchford responded that a few concerts had utilized outdoor space at Expo and noted that it is a possibility to look at that type of event in the future. • Commissioner Hall inquired about the next steps regarding development and lease offerings and whether a timeline had been established. Rowe responded that those are being considered and that he will return in six months with further updates. Rotchford added that the Expo Advisory Committee will also be included in the discussions before decisions are made. Rowe noted that it is important to consult the appropriate stakeholders at the appropriate times for both the Expo and Portland's projects. <p>Rowe then presented the Portland's project update.</p> <ul style="list-style-type: none"> • Commissioner Hall inquired about the availability of the seismic study done on the P's buildings. Robyn Williams, Executive Director of P's, responded that the city has not yet accepted the study as they are awaiting additional information. Rowe added that the city commissioned and paid for the study. • Commissioner Krys-Rusoff inquired about the transfer of responsibility and risk to P's. Metro Deputy Attorney, Nathan Sykes noted that MERC insures the property and manages risk. Regarding other issues, he added that is why this project is important. • Commissioner Hall suggested that MERC be more involved in the project in the nearer term. • Chair Stoudamire-Phillips offered to follow up with Rowe regarding MERC representation on the committees.
8.0	<p>HOTEL PROJECT UPDATE Project Manager, Hillary Wilton, reported on the latest project developments.</p>
9.0	<p>CONSENT AGENDA</p> <ul style="list-style-type: none"> • Record of MERC Actions, December 6, 2017 <p>A motion was made by Commissioner Krys-Rusoff and seconded by Commissioner Palm to approve the Consent Agenda.</p> <p>VOTING: AYE: 6 (Stoudamire-Phillips, Krys-Rusoff, Palm, Erickson, Hall, Malán) NAY: 0 MOTION PASSED</p> <p><i>Commissioner Hall departed the meeting at 2:15 p.m.</i></p>
10.0 10.1	<p>ACTION AGENDA</p> <p>Resolution 18-01: For the purpose of approving the scope and fee proposal from Architectural Resources Group for Architecture and Engineering Services for the Arlene Schnitzer Concert Hall Orchestra Shell Replacement and authorizing the General Manager of Visitor Venues to execute the contract. Nancy Strening of Metro Construction Project Management Office presented the resolution.</p> <ul style="list-style-type: none"> • Commissioner Krys-Rusoff inquired about the amount of time required to set up and take down the new shell. Strening responded that the shell is actually a virtual one. Since it is electronic, it will be

	<p>simpler and faster to set up and move.</p> <p>Williams added that this new product not only allows simpler re-shaping of the acoustics but it also takes up less space which better serves all arts groups.</p> <ul style="list-style-type: none"> • Krys-Rusoff inquired whether an arts group would be able to help with the funding. <p>Williams responded that it is expected that some entity other than Portland's will help with the funding of the project.</p> <p>A motion was made by Commissioner Palm and seconded by Commissioner Krys-Rusoff to approve the Resolution.</p> <p>VOTING: AYE: 5 (Stoudamire-Phillips, Krys-Rusoff, Erickson, Palm, Malán)</p> <p> NAY: 0</p> <p> MOTION PASSED</p>
	<p>As there was no further business to come before the Commission, the meeting was adjourned at 2:25 p.m.</p>

MERC Commission Meeting

February 7, 2018
12:30 pm

11.0 Action Agenda

METROPOLITAN EXPOSITION RECREATION COMMISSION
Resolution No. 18-02

For the purpose of approving and transmitting to the Metro Council budget amendments to the Metropolitan Exposition Recreation Commission (MERC) Fund Approved Budget for fiscal year 2017-18, and requesting amendment of the Capital Improvement Plan (CIP) FY 2017-18.

WHEREAS, Metro Code 6.01.050 provides that MERC shall annually prepare and approve an annual budget which shall, to the maximum extent permitted by law, consist of one commission-wide series of appropriations; and

WHEREAS, MERC previously approved and transmitted to the Metro Council the fiscal year 2017-18 budget for the MERC Fund; and

WHEREAS, MERC staff request certain budget amendments to the Proposed Budget for fiscal year 2017-18 for the reasons described in the attached Staff Report.

BE IT THEREFORE RESOLVED THAT,

1. MERC approves the budget amendments to the MERC Fund for the fiscal year beginning July 1, 2017 and ending June 30, 2018 for inclusion as part of the total Metro budget for this period.
2. MERC requests that the Metro COO present these amendments to the Proposed Budget to the Metro Council for ratification.

Passed by the Commission on February 7, 2018.

Approved as to Form:
Alison R. Kean, Metro Attorney

Chair

Secretary/Treasurer

By:
Nathan A. S. Sykes, Deputy Metro Attorney

MERC Staff Report

Agenda Item/Issue: For the purpose of approving and transmitting to the Metro Council a FY 2017-18 Budget and Capital Improvement Plan (CIP) amendment to the MERC Fund.

Resolution No: 18-02

Presented By: Rachael Lembo, MERC Finance Manager

Date: February 7, 2018

Background and Analysis:

This amendment proposes two types of CIP amendments: budget adjustments in existing projects and a timing adjustment to the five-year CIP schedule. There are no new projects proposed in this amendment.

CIP Amendment – Oregon Convention Center

The following amendment is a timing adjustment on the five-year CIP schedule.

The Master Plan Renovation will have costs spread out over multiple fiscal years. The latest projection has costs shifting from FY2017-18 to FY2018-19 and FY2019-20. The project is still expected to be completed on time, prior to the Hyatt Convention Center Hotel opening in December 2019. The total project budget of \$35.5 million does not change. This amendment only impacts the fiscal years the expenses are expected to be incurred, and results in a reduction to the capital budget in the current year.

FY 2017-18 Budget Impact – OCC CIP, 5 year CIP updates

Project Description	Project #	FY 17-18 Current Budget	Amendment	FY 17-18 Amended Budget
Master Plan Renovation	8R082	6,000,000	(1,360,000)	4,640,000
Contingency		31,130,497	1,360,000	32,490,497

CIP Amendment – Portland Expo Center

The following amendment is a budget and timing adjustment in an existing project:

- The Connector Glass Door project proposes an increase of \$105,000.

This project will expand the plaza for additional food and beverage sales opportunities. The original budget, prior to design, was \$165,000 over two fiscal years. The design work has now been completed and the architect has submitted a cost estimate for construction, which is higher than the current budget. This is due to various factors, including additional scope to provide more flexibility for food and beverage setups, additional requirements by the Portland Bureau of Development Services on exterior concrete work, and a higher cost escalation factor than was assumed at the time of original budget. Expo will be accepting bids throughout February, and would like to begin the work this fiscal year. Based on the bids received, the Expo event schedule, and potentially long lead times, the project may need to be carried forward to FY18-19. However, at this point the entire budget is being requested for FY17-18 to ensure funding is available.

The following amendments are budget adjustments in existing projects:

- The New Hall A Shore Power project proposes an increase of \$70,000.

This project extended high voltage power to Lower Parking Lot 1. It involved infrastructure construction, acquisition and installation of Electrical Switchgear (shore power) and temporary shelter. There were a number of unforeseen conditions and unaccounted for PGE design standards and stipulations which resulted in contract change orders, additional engineering and special inspections. In addition, this project was under a tight schedule to be completed prior to the arrival of Cirque du Soleil.

- The increased costs of the two projects above will be covered by \$175,000 of expected savings in the Halls D&E Roof Replacement Project. That project is nearly complete, with the connector roof, modifications to existing rooftop penthouses and final roof coating to be done this spring.

FY 2017-18 Budget Impact

Project Description	Project #	FY 17-18 Current Budget	Amendment	FY 17-18 Amended Budget
Connector Glass Door	85106	120,000	105,000	225,000
New Hall A Shore Power	8R170	150,000	70,000	220,000
Halls D&E Roof Replacement	8R136	1,919,689	(175,000)	1,744,689
Projects Subtotal:		\$2,189,689	\$0	\$2,189,689

Fiscal Impact: This action will amend the FY 2017-18 Adopted Budget as shown above. The revised five year CIP is included as Attachment 1.

Recommendation: Staff recommends the Metropolitan Exposition Recreation Commission adopt Resolution 18-02.

Oregon Convention Center Amended CIP Summary							
	Prior Years	FY 2017-18	FY 2018-19	FY 2019-20	FY 2020-21	FY 2021-22	Total
Convention Center Operating Fund							
OCC Capital projects < \$100k	-	273,000	-	75,000	-	-	348,000
Master Plan Renovation	580,000	4,640,000	27,630,000	2,650,000	-	-	35,500,000
CCTV Replacement	-	450,000	-	-	-	-	450,000
Lding Dock Imprvmnts	20,000	360,000	-	-	-	-	380,000
EST-3 Fire Alarm Notification Upgrades	334,000	41,000	-	-	-	-	375,000
Integrated Door Access Controls	-	300,000	-	-	-	-	300,000
Staff & Setup Supervisor Support Space Renc	-	644,000	-	-	-	-	644,000
Lighting Control System	-	275,000	-	-	-	-	275,000
POS Replacement	-	230,000	-	-	-	-	230,000
Movable Partition Refurbishment	-	180,000	-	-	-	-	180,000
Building Envelope	-	150,000	700,000	-	-	-	850,000
A/V Equipment (NBS)	-	150,000	150,000	150,000	150,000	150,000	750,000
Cooling System Rplcmnt	-	80,000	2,300,000	-	-	-	2,380,000
Alerton Glbl Cntrlr Upgrd	-	70,000	50,000	-	-	-	120,000
Orbit Bakery/Front Remodel	-	-	700,000	-	-	-	700,000
Lighting Project - BOH, Offices	-	-	500,000	-	-	-	500,000
Crbrd Baler & Cnpy	-	-	215,000	-	-	-	215,000
WiFi & Show Network Upgrades	-	-	120,000	-	130,000	-	250,000
Chair Replacement	-	-	-	600,000	-	660,000	1,260,000
Table Replacement	-	-	-	400,000	-	-	400,000
AV Audio System Upgrade	-	-	-	315,000	-	-	315,000
Sandwich Company Renovation	-	-	-	250,000	-	-	250,000
Public Circulation Furniture Replacement	-	-	-	175,000	-	-	175,000
Portland Roasting Coffee Renovation	-	-	-	150,000	150,000	-	300,000
Boiler Replacement (2)	-	-	-	-	1,750,000	-	1,750,000
Tortilla Crisp Renovation	-	-	-	-	400,000	-	400,000
Information Systems and Property and Eviron. Services Projects							
VOIP Phone System Upgrade Phase II	-	300,000	-	-	-	-	300,000
VOIP Phone System Upgrade	-	52,500	-	-	-	-	52,500
Oregon Convention Center Fund Total		\$8,195,500	\$32,365,000	\$4,765,000	\$2,580,000	\$810,000	\$49,649,500
Total changes in proposed amendment		(\$1,360,000)	(\$1,370,000)	\$2,650,000	\$0	\$0	\$0

Expo Center Amended CIP Summary							
	ID	FY 2017-18	FY 2018-19	FY 2019-20	FY 2020-21	FY 2021-22	Total
Expo Fund							
Capital projects < \$100k		421,553	185,000	205,000	-	150,000	961,553
Hall D Roof Repairs/Replacement	8R136	1,744,689	975,000	-	-	-	2,719,689
POS Micros System	EXTBD16	160,000	-	-	-	-	160,000
Hall A Elec. transformer/LP1 Shore Power /Cirque	EXTBD31	220,000	-	-	-	-	220,000
Parking Lot Asphalt Maintenance / Replacement	8R040	135,000	60,000	60,000	60,000	60,000	375,000
Connector Glass Door	85106	225,000	-	-	-	-	225,000
PGE Upgrades	TBD	100,000	-	-	-	-	100,000
Roof Repair - Halls ABC Minor Repairs	8R135	80,000	135,000	10,000	10,000	10,000	245,000
WiFi - Telecommunications Upgrade	8R139	80,000	-	-	50,000	-	130,000
Hall C HVAC Study and Installation	EXTBD25	35,000	250,000	-	-	-	285,000
Lighting Control review and install - Halls ABCDE	EXTBD30	20,000	150,000	-	-	-	170,000
Sport Court / Futsal	EXTBD23	-	175,000	-	-	-	175,000
Hall C Roof Recoat	EXTBD49	-	125,000	-	-	-	125,000
Halls ABC Interior Paint (R&R)	EXTBD12	-	120,000	-	-	-	120,000
UP4 New Storage Building	EXTBD19	-	50,000	250,000	-	-	300,000
Expo Website Update	EXTBD32	-	50,000	200,000	-	-	250,000
Facility Wide Door review / install / security	EXTBD27	-	35,000	250,000	-	-	285,000
Electrical Equipment (New Bus/Capital)	EXTBD06	-	-	150,000	-	-	150,000
Hall D Kitchen Office Conversion	EXTBD17	-	-	35,000	300,000	-	335,000
Hall D Storage Office Conversion	EXTBD18	-	-	35,000	300,000	-	335,000
Roof Repair - Hall E Loading Dock (TLT Pooled)	EXTBD02	-	-	-	375,000	330,000	705,000
Facility Wide Overhead Door review / install	EXTBD28	-	-	-	35,000	250,000	285,000
Parking Entry System and Loop Replacement	EXTBD50	-	-	-	-	700,000	700,000
Hall E HVAC	EXTBD39	-	-	-	-	290,000	290,000
Information Systems and Property and Eviron. Services Projects							
VOIP Phone System Upgrade Phase II	65701C	70,740	-	-	-	-	70,740
VOIP Phone System Upgrade	65701B	37,200	-	-	-	-	37,200
Expo Center Fund Total		\$3,329,182	\$2,310,000	\$1,195,000	\$1,130,000	\$1,790,000	\$9,754,182
Total changes in proposed amendment		\$0	(\$45,000)	\$0	\$0	\$0	(\$45,000)

**Materials following this page are
attachments to the public record.**

Tentative calendar for the month of										Tentative calendar for the month of									
		SUNDAY		MONDAY		TUESDAY		WEDNESDAY		THURSDAY		FRIDAY		SATURDAY					
ASCH										OSO Youth Concerts 9:35am and 11:05am Two shows, one call time Dusty Guitar/Bill Engvall 7:00pm	1		2	OSO Special Final Fantasy - Distant Worlds 7:30pm	3				
KA																			
NMK										OCT Pete the Cat 9:45am and 11:45am Two shows, one call time		OCT Pete the Cat 9:45am and 11:45am Two shows, one call time		OCT Pete the Cat 2:00pm and 5:00pm					
WIN												Portland'5 Ctrs for the Arts Volunteer Variety Show 7:00pm							
AHH										Portland'5 Ctrs for the Arts First Thursday Reception 5:00pm Rotunda Lobby									
OCC	EXPO																		
ASCH			4		5		6		7	Literary Arts Claudia Rankine 7:30pm	8		9	OSO Classical #9 Tchaikovsky's Pathetique 7:30pm	10				
KA																			
NMK		OCT Pete the Cat 11:00am and 2:00pm				OCT Pete the Cat 9:45am and 11:45am Two shows, one call time		OCT Pete the Cat 9:45am and 11:45am Two shows, one call time		OCT Pete the Cat 9:45am and 11:45am Two shows, one call time		OCT Pete the Cat 9:45am and 11:45am Two shows, one call time		OCT Pete the Cat 2:00pm and 5:00pm					
WIN																			
AHH																			
OCC	EXPO																		
ASCH		OSO Classical #9 Tchaikovsky's Pathetique 7:30pm	11	OSO Classical #9 Tchaikovsky's Pathetique 7:30pm	12	OSO Special Johnny Mathis 7:30pm	13	PYP PYP 9:45am and 11:30am Two shows, one call time	14		15	OSO Pops #3 9:30am Open Rehearsal Icon Entertainment/Jo Koy 7:00pm	16	OSO Pops #3 Music of John Williams 7:30pm	17				
KA		Portland'5 Presents A Night w/ Janis Joplin 7:30pm				Broadway Across America Gentlemen's Guide to Love 7:30pm		Broadway Across America Gentlemen's Guide to Love 7:30pm		Broadway Across America Gentlemen's Guide to Love 7:30pm		Broadway Across America Gentlemen's Guide to Love 7:30pm		Broadway Across America Gentlemen's Guide to Love 2:00pm and 7:30pm					
NMK		OCT Pete the Cat 11:00am and 2:00pm						OCT Pete the Cat 9:45am and 11:45am Two shows, one call time		OCT Pete the Cat 9:45am and 11:45am Two shows, one call time		OCT Pete the Cat 9:45am and 11:45am Two shows, one call time		OCT Pete the Cat 2:00pm and 5:00pm					
WIN								Knitting Factory Presents Chad Prather 8:00pm				PDX Jazz David Sanchez 9:30pm		PDX Jazz Julian Lage Trio 10:00pm					
AHH				P'5/Noontime Showcase 12:00pm Rotunda Lobby Tony Starlight Poetry on Broadway J. Zamora/S. Adams Santos 7:30pm						Stumptown Stages Folk City 7:30pm BT		Stumptown Stages Folk City 7:30pm BT		Stumptown Stages Folk City 7:30pm BT					
OCC	EXPO																		
ASCH		OSO Pops #3 Music of John Williams 2:00pm	18		19		20	White Bird Mark Morris Dance 7:30pm	21	Live Nation Sam Harris - Waking Up 8:00pm	22		23	OSO Classical #10 Sibelius' Fifth Symphony 7:30pm	24				
KA		Broadway Across America Gentlemen's Guide to Love 1:00pm and 6:30pm										OBT Alice (in wonderland) 7:00pm Open Rehearsal		OBT Alice (in wonderland) 2:00pm and 7:30pm					
NMK		OCT Pete the Cat 2:00pm		Portland'5 Presents Nat Geo Live Pete McBride/Kevin Fedarko 7:30pm		Chabad Center Historic Evening with Eva Schloss 7:30pm		Portland'5 Presents Miro & Kahane 7:30pm		PDX Jazz Carrington, Coltrane & Spalding 7:00pm		PDX Jazz Marcus Roberts Trio 7:00pm		Merton Meeker Michael Kaeshammer 8:00pm					
WIN		PDX Jazz Randy Porter 4:00pm								PDX Jazz George Colligan Trio 9:30pm		PDX Jazz Dr. Lonnie Smith 9:30pm		PDX Jazz Charles Tolliver 10:00pm					
AHH		Stumptown Stages Folk City 2:00pm BT								Stumptown Stages Folk City 7:30pm BT		Stumptown Stages Folk City 7:30pm BT		Stumptown Stages Folk City 7:30pm BT					
OCC	EXPO									PDX Jazz Conversations 4:30, 5:30 & 11:30pm		PDX Jazz Conversations 4:30, 5:30 & 11:00pm		PDX Jazz Conversations 4:00pm & 6:30pm					
ASCH		OSO Classical #10 Sibelius' Fifth Symphony 2:00pm	25	OSO Classical #10 Sibelius' Fifth Symphony 7:30pm	26	OSO Presentation k.d. lang 8:00pm	27	Portland'5 Presents Incredible Journey of Jazz 10:00am and 12:00pm Two shows, one call time	28										
KA		OBT Alice (in wonderland) 2:00pm																	
NMK				Red Door Project August Wilson Monologue 7:00pm															
WIN																			
AHH		Stumptown Stages Folk City 2:00pm BT																	
OCC	EXPO																		

NOTE: ALL LISTED EVENTS ARE SUBJECT TO CHANGE WITHOUT NOTICE

ASCH = Arlene Schnitzer Concert Hall KA = Keller Auditorium NMK = Newmark Theatre WIN = Dolores Winningstad Theatre AHH = Antoinette Hatfield Hall BT = Brunish Theatre

		Tentative calendar for the month of										Tentative calendar for the month of									
		SUNDAY		MONDAY		TUESDAY		WEDNESDAY		THURSDAY		FRIDAY		SATURDAY							
ASCH										OSO Special Blind Pilot 7:30pm	1	OSO Presentation Herbie Hancock 7:30pm	2	PYP #3 7:30pm	3						
KA										OBT Alice (in wonderland) 12:00pm & 7:30pm		OBT Alice (in wonderland) 7:30pm		OBT Alice (in wonderland) 2:00pm & 7:30pm							
NMK										White Bird Urban Bush Women 8:00pm		White Bird Urban Bush Women 8:00pm		White Bird Urban Bush Women 8:00pm							
WIN												OCT - And in This Corner Open Rehearsal 7:00pm		OCT - And in This Corner 2:00pm & 5:00pm							
AHH										Stumptown Stages Folk City 7:30 PM	BT	Stumptown Stages Folk City 7:30 PM	BT	Stumptown Stages Folk City 7:30pm	BT						
OCC	EXPO																				
ASCH		OSO Kids #3 Along the Oregon Trail 2:00pm MYS MYS #2 7:30pm	4	Emporium Presents Daniel Tiger's Neighborhood 6:30pm	5		6		7		8		9	OSO Classical #11 Verdis Requiem 7:30pm	10						
KA		OBT Alice (in wonderland) 12:00pm				Broadway Across America Sound of Music 7:30pm		Broadway Across America Sound of Music 7:30pm		Broadway Across America Sound of Music 7:30pm		Broadway Across America Sound of Music 7:30pm		Broadway Across America Sound of Music 2:00pm & 7:30pm							
NMK				Portland'5 Presents Nat Geo Live Mireya Mayor 11:00am & 7:30pm						White Bird Jessica Lang Dance 7:30pm		White Bird Jessica Lang Dance 7:30pm		White Bird Jessica Lang Dance 7:30pm							
WIN		OCT And in This Corner 11:00am & 2:00pm				OCT And in This Corner 9:45am & 11:45am Two shows, one call time		OCT And in This Corner 9:45am & 11:45am Two shows, one call time		OCT And in This Corner 9:45am & 11:45am Two shows, one call time		OCT And in This Corner 9:45am & 11:45am Two shows, one call time		OCT And in This Corner 9:45am & 11:45am Two shows, one call time							
AHH		Stumptown Stages Folk City 2:00pm																			
OCC	EXPO																				
ASCH		OSO Classical #11 Verdis Requiem 2:00pm	11	OSO Classical #11 Verdis Requiem 7:30pm	12		13	White Bird Compania Jesus Carmona 7:30pm	14		15		16	OSO Classical #12 Brahms Violin Concerto 7:30pm	17						
KA		Broadway Across America Sound of Music 1:00pm & 6:30pm												Live Nation Brian Regan 8:00pm							
NMK										NW Dance Project NW Dance Project 7:30pm		NW Dance Project NW Dance Project 7:30pm		NW Dance Project NW Dance Project 7:30pm							
WIN		OCT And in This Corner 11:00am & 2:00pm				OCT And in This Corner 9:45am & 11:45am Two shows, one call time		OCT And in This Corner 9:45am & 11:45am Two shows, one call time		OCT And in This Corner 9:45am & 11:45am Two shows, one call time		OCT And in This Corner 9:45am & 11:45am Two shows, one call time		OCT And in This Corner 9:45am & 11:45am Two shows, one call time							
AHH				P'5/Noontime Showcase 12:00pm Rotunda Lobby Portland'5 Presents Poetry on Broadway Jane Wong & Shayla Lawson 7:30pm Rotunda Lobby																	
OCC	EXPO																				
ASCH		OSO Classical #12 Brahms Violin Concerto 7:30pm	18	OSO Classical #12 Brahms Violin Concerto 7:30pm	19		20		21	OSO Presentation The Fab Four 7:30pm	22	AEG Live Jim Jefferies 7:00pm & 10:00pm Two shows, one call time	23	OSO Presentation Jurassic Park 7:30pm	24						
KA						Broadway Across America Hamilton 7:30pm		Broadway Across America Hamilton 7:30pm		Broadway Across America Hamilton 7:30pm		Broadway Across America Hamilton 7:30pm		Broadway Across America Hamilton 2:00pm & 7:30pm							
NMK												Portland'5 Presents Best of Second City 7:00pm									
WIN		OCT And in This Corner 11:00am & 2:00pm				OCT And in This Corner 9:45am & 11:45am Two shows, one call time		OCT And in This Corner 9:45am & 11:45am Two shows, one call time		OCT And in This Corner 9:45am & 11:45am Two shows, one call time		OCT And in This Corner 9:45am & 11:45am Two shows, one call time		OCT And in This Corner 2:00pm & 5:00pm							
AHH																					
OCC	EXPO																				
ASCH		OSO Presentation Jurassic Park 2:00pm	25		26		27		28		29	Snowman Foundation Ten Grands 9:45am & 11:45am Two shows, one call time	30	Snowman Foundation Ten Grands 7:00pm	31						
KA		Broadway Across America Hamilton 1:00pm & 6:30pm				Broadway Across America Hamilton 7:30pm		Broadway Across America Hamilton 7:30pm		Broadway Across America Hamilton 7:30pm		Broadway Across America Hamilton 7:30pm		Broadway Across America Hamilton 2:00pm & 7:30pm							
NMK																					
WIN		OCT And in This Corner 11:00am & 2:00pm										OCT Hungry Caterpillar 7:00pm Open Rehearsal		OCT Hungry Caterpillar 2:00pm & 5:00pm							
AHH																					
OCC	EXPO																				



Painted - Orchestra





OREGN

Oregon
Convention
Center

**OCC Plaza and Interior
Renovation**

Project Goals

- Update the 27-year old Convention Center
- Create a cohesive meeting and visitor atmosphere with the new Hyatt Regency Portland hotel
- Improve overall convention market position
- Two major scopes
 - Plaza renovation
 - Interior renovation

°

Project budget is \$35.5 million

Tentative schedule

Design complete	January 2018
Construction documents complete	April 2018
Construction start	August 2018
Project completion	Summer 2019

Designers and Contractors

A commitment to local minority and women-owned businesses

- **Lead architect:** LMN Architects
- **Associate architect:** Merryman Barnes
- **Landscape architect (plaza design):** Mayer/Reed
- **General Contractor:** Colas Construction
- **Associate Contractor:** Raimore Construction

Plaza Project Goals

- Improve visibility and access to the building's entrances
- Create outdoor programmable space for event use

Entrance Visibility



OREGON

Oregon
Convention
Center

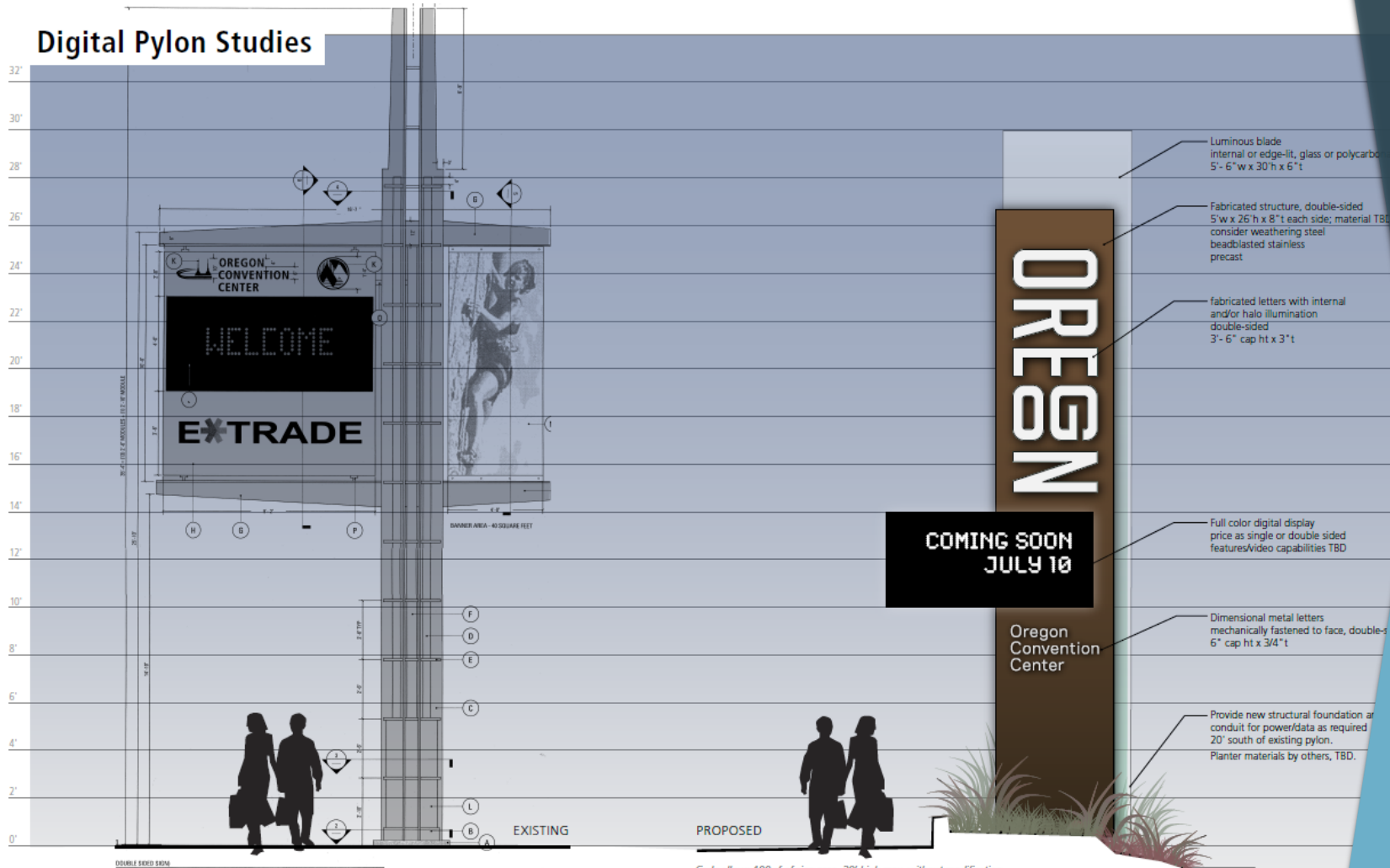


OREGON

Oregon
Convention
Center

Pylon

Digital Pylon Studies



OREGON

Oregon Convention Center

1 Digital Pylon Study
Scale: 1/4" = 1'-0"

Code allows 100 sf of sign area, 20' high max, without modification.
Code allows 10 sf changing image sign without modification.
Proposed sign has 80 sf message areas only.
140 sf sign total area excluding luminous blade.
175 sf sign area with all components included.
Proposed sign has 35 sf changing image sign (same as existing)

Plaza Layout Options



Car Show



Concert



Reception

OREGON

Oregon
Convention
Center



OREGON

Oregon
Convention
Center



OREGON

Oregon
Convention
Center

Interior Renovation

Interior Project Goals

- Enhance level of guest experience
- Create a memorable identity that is unique to Portland
- Improve OCC competitiveness

Inspirational Images



OREGON

Oregon
Convention
Center

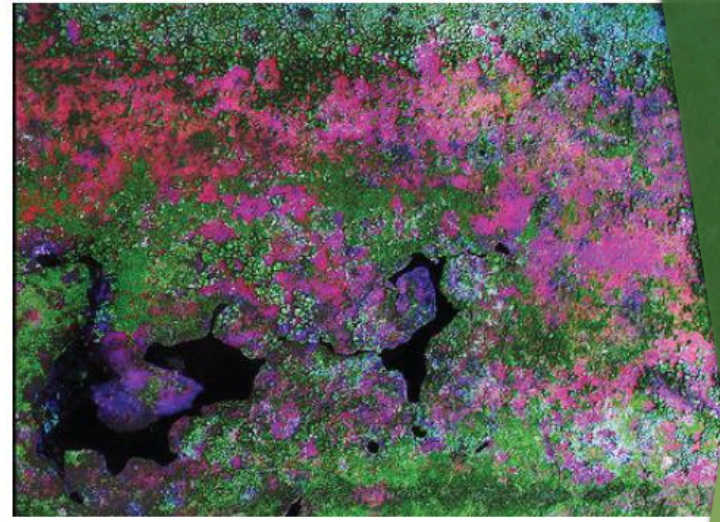
Inspirational Images



OREGON

Oregon
Convention
Center

Inspirational Images



OREGON

Oregon
Convention
Center

Finish Palette



OREGON

Oregon
Convention
Center

Martin Luther King Jr. Lobby



OREGON

Oregon
Convention
Center

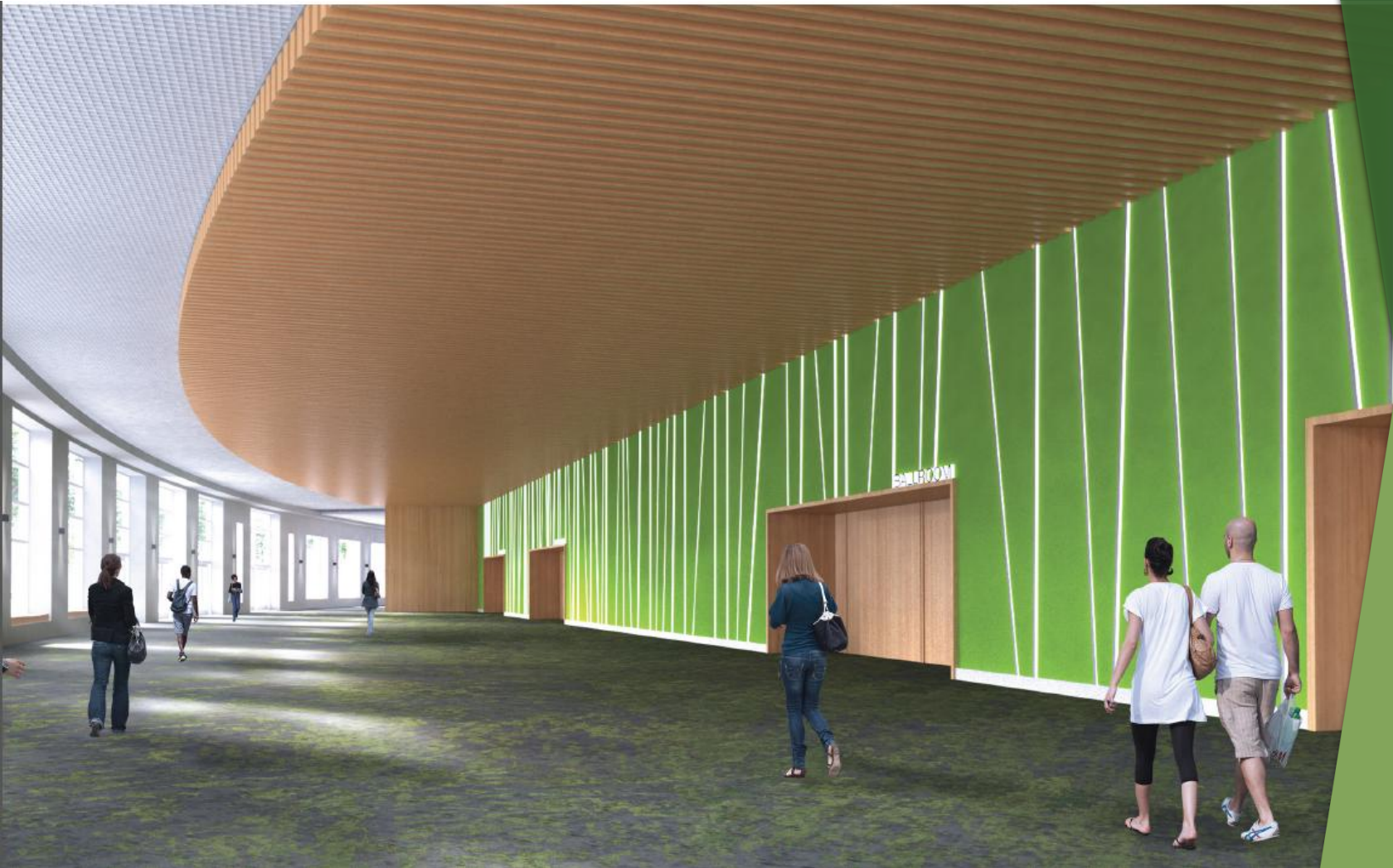
Meeting Room Foyer



OREGON

Oregon
Convention
Center

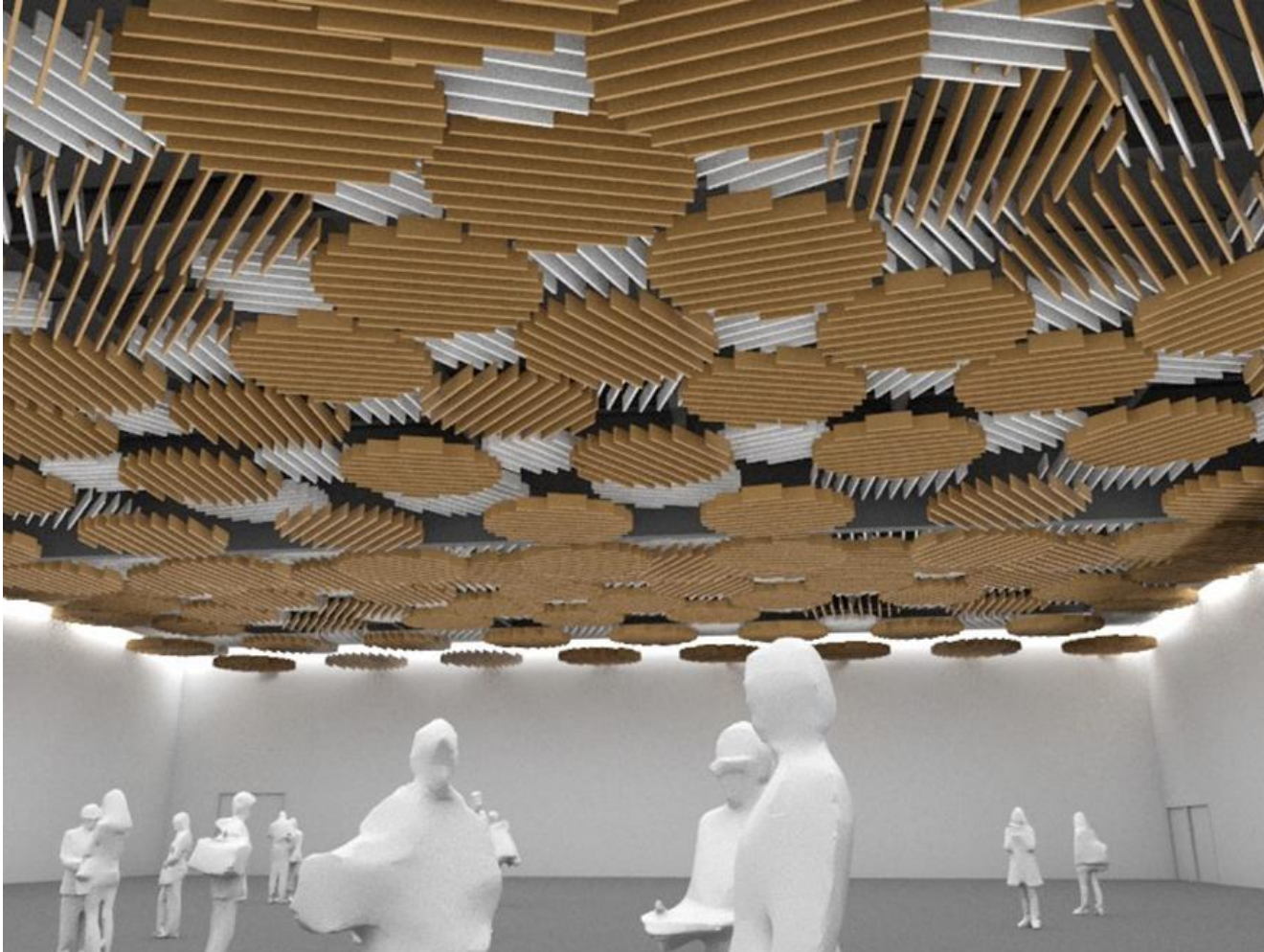
Oregon Ballroom Lobby



OREGON

Oregon
Convention
Center

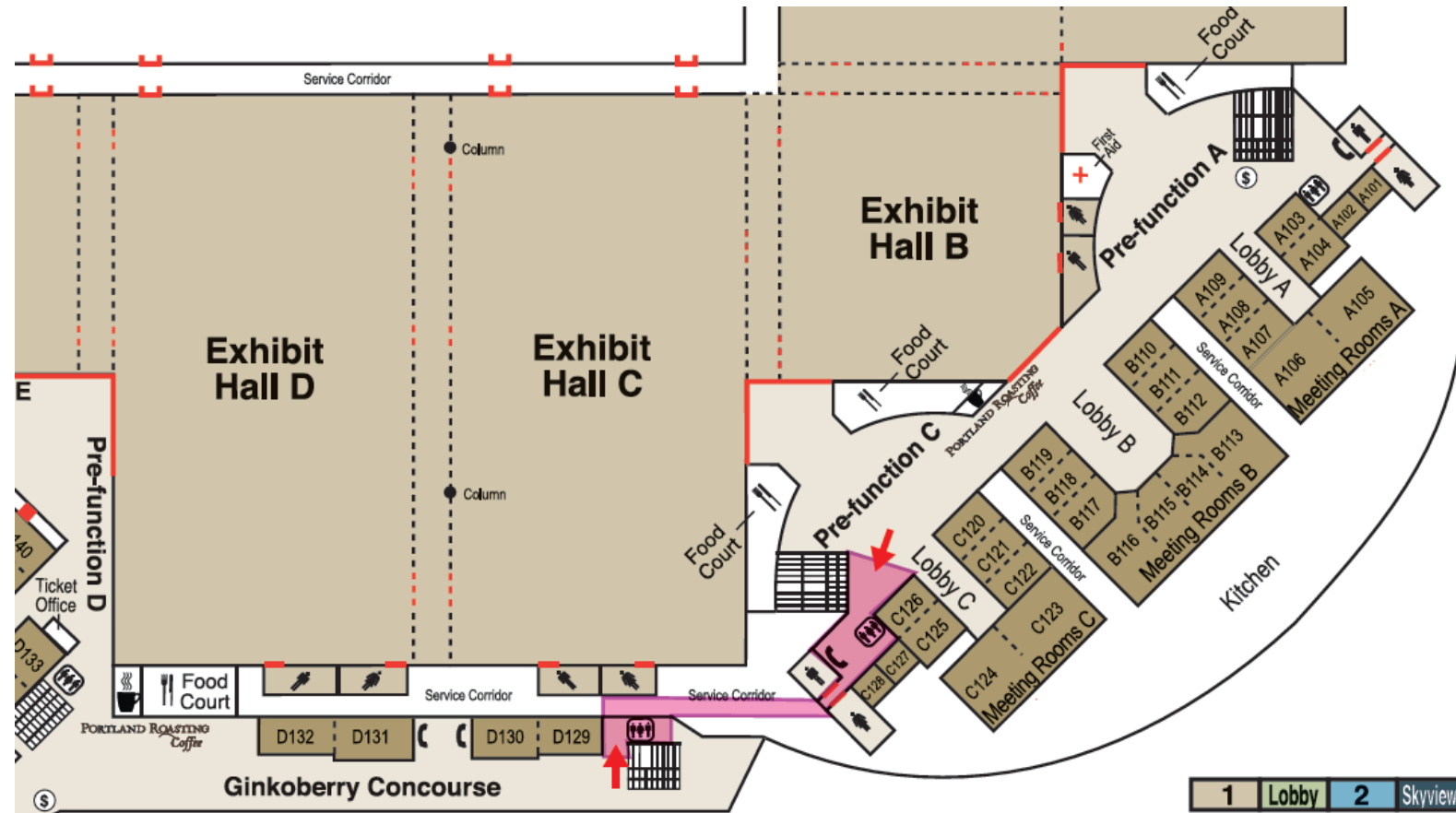
Oregon Ballroom Ceiling



OREGON

Oregon
Convention
Center

Guest Passage



OREGON

Oregon
Convention
Center

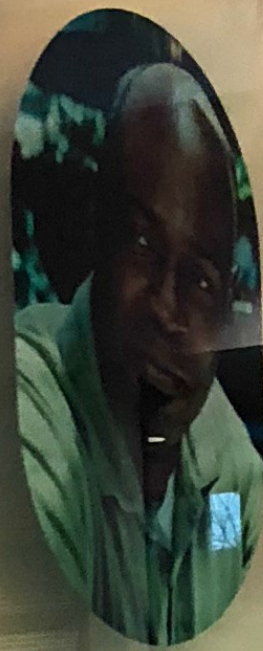
Questions?

OREGON

Oregon
Convention
Center

Bill Tolbert Diversity Award

Bill Tolbert served as Metro's first Diversity Program Manager from 2012 until his death in 2016. Bill's leadership planted the seeds that are helping Metro grow into an inclusive organization that respects diversity and works toward racial equity.



Established by the Metro Council in 2017, the award recognizes one staff member each year whose actions and activities embody Bill's leadership qualities and help Metro significantly advance, embrace and support a welcoming and inclusive culture.

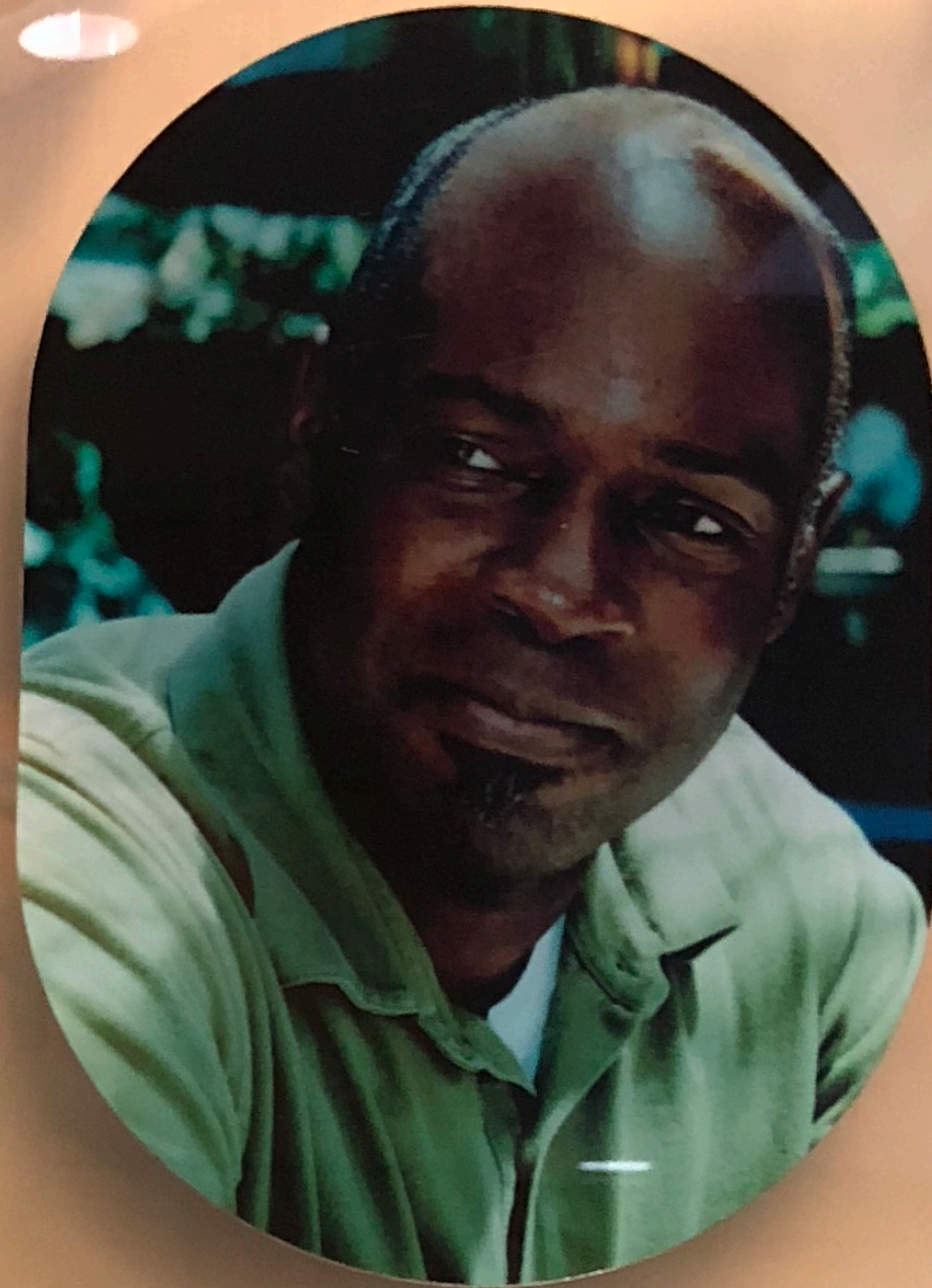


2017

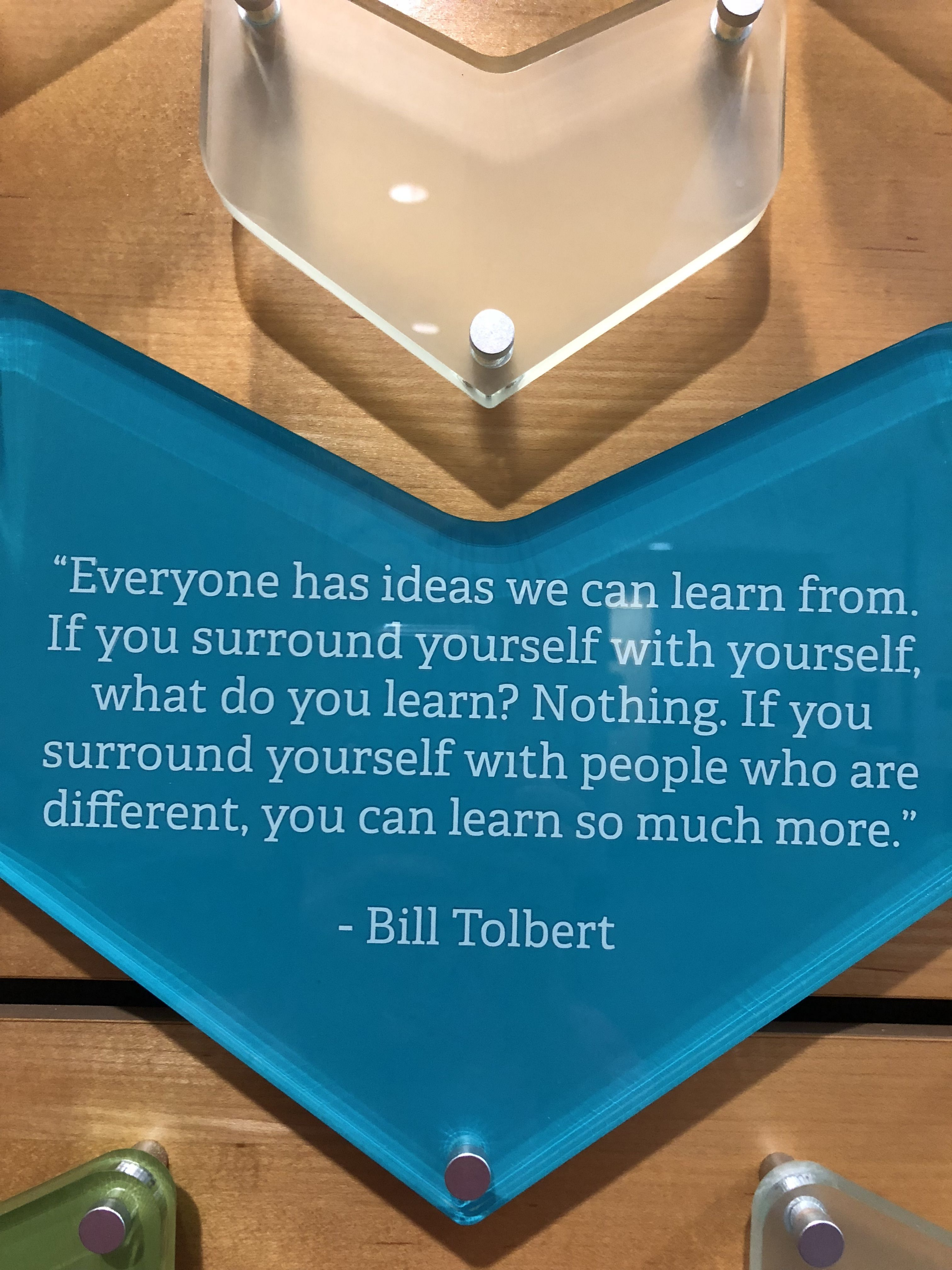
Debbie
Humphrey

Bill Tolbert Diversity Award

Bill Tolbert served as Metro's first Diversity Program Manager from 2012 until his death in 2016. Bill's leadership planted the seeds that are helping Metro grow into an inclusive organization that respects diversity and works toward racial equity.



Established by the Metro C
award recognizes one sta
year whose actions and a
Bill's leadership qualities
significantly advance, emb
a welcoming and inclu



“Everyone has ideas we can learn from. If you surround yourself with yourself, what do you learn? Nothing. If you surround yourself with people who are different, you can learn so much more.”

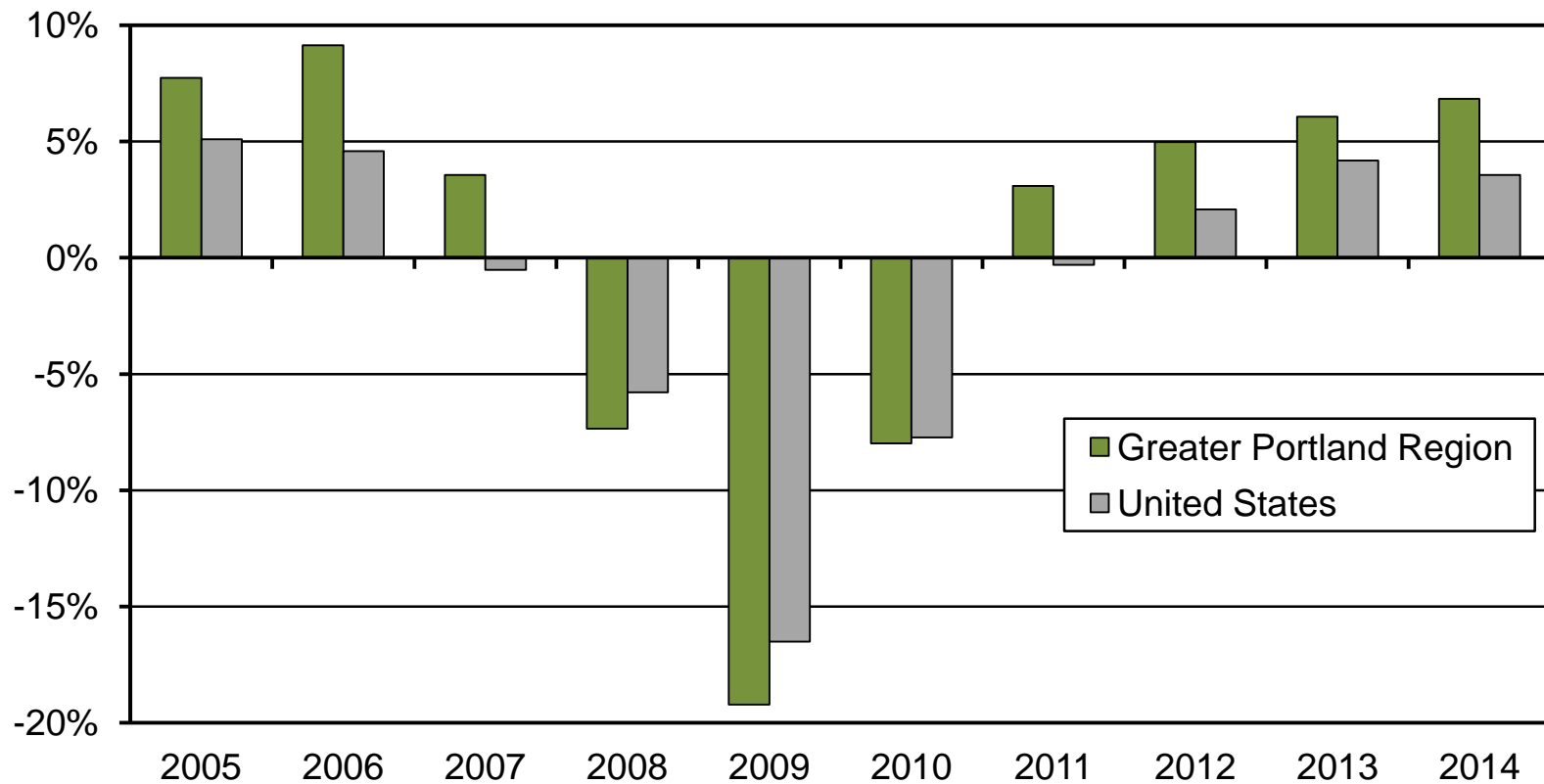
- Bill Tolbert



Construction Career Pathways Project (C2P2)

February 7, 2018

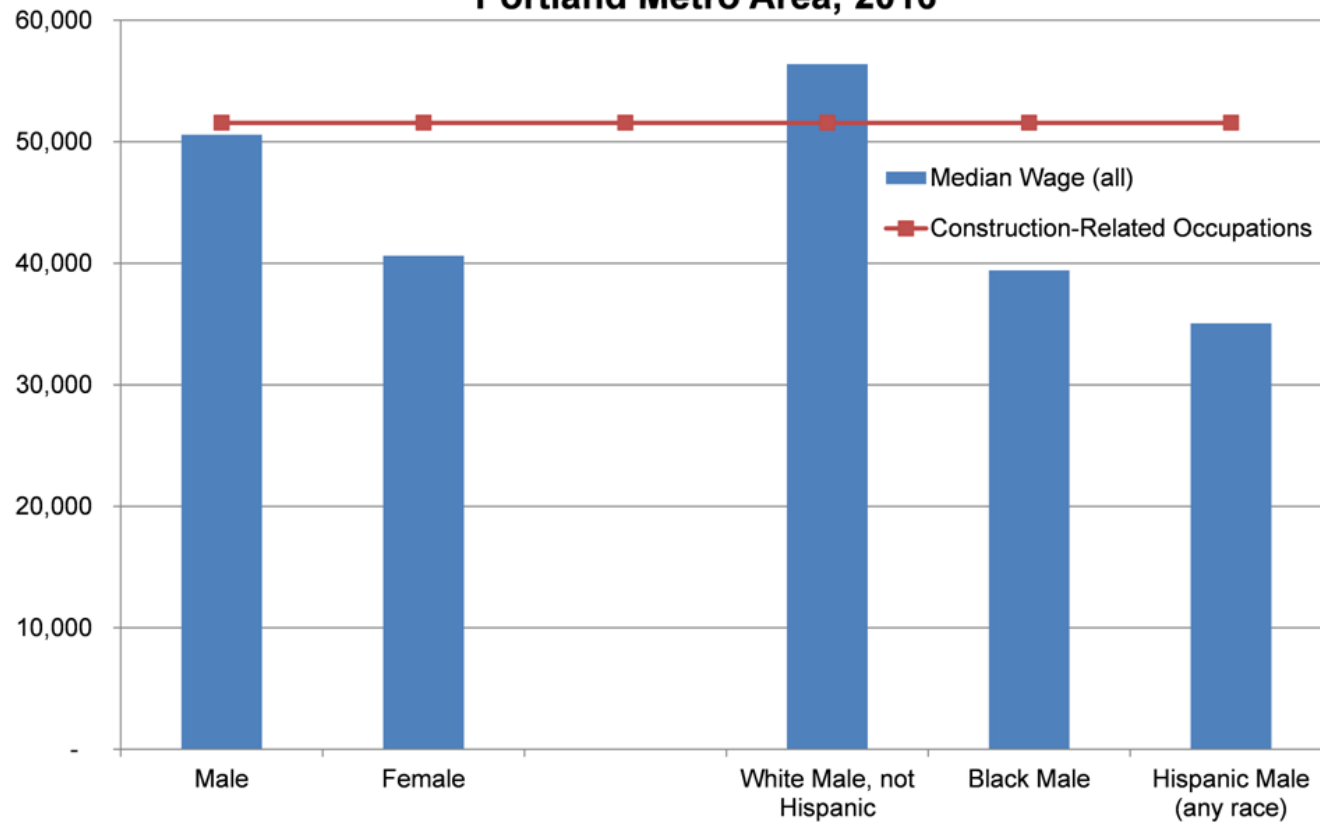
Annual Growth Rates - Construction



Source: EMSI

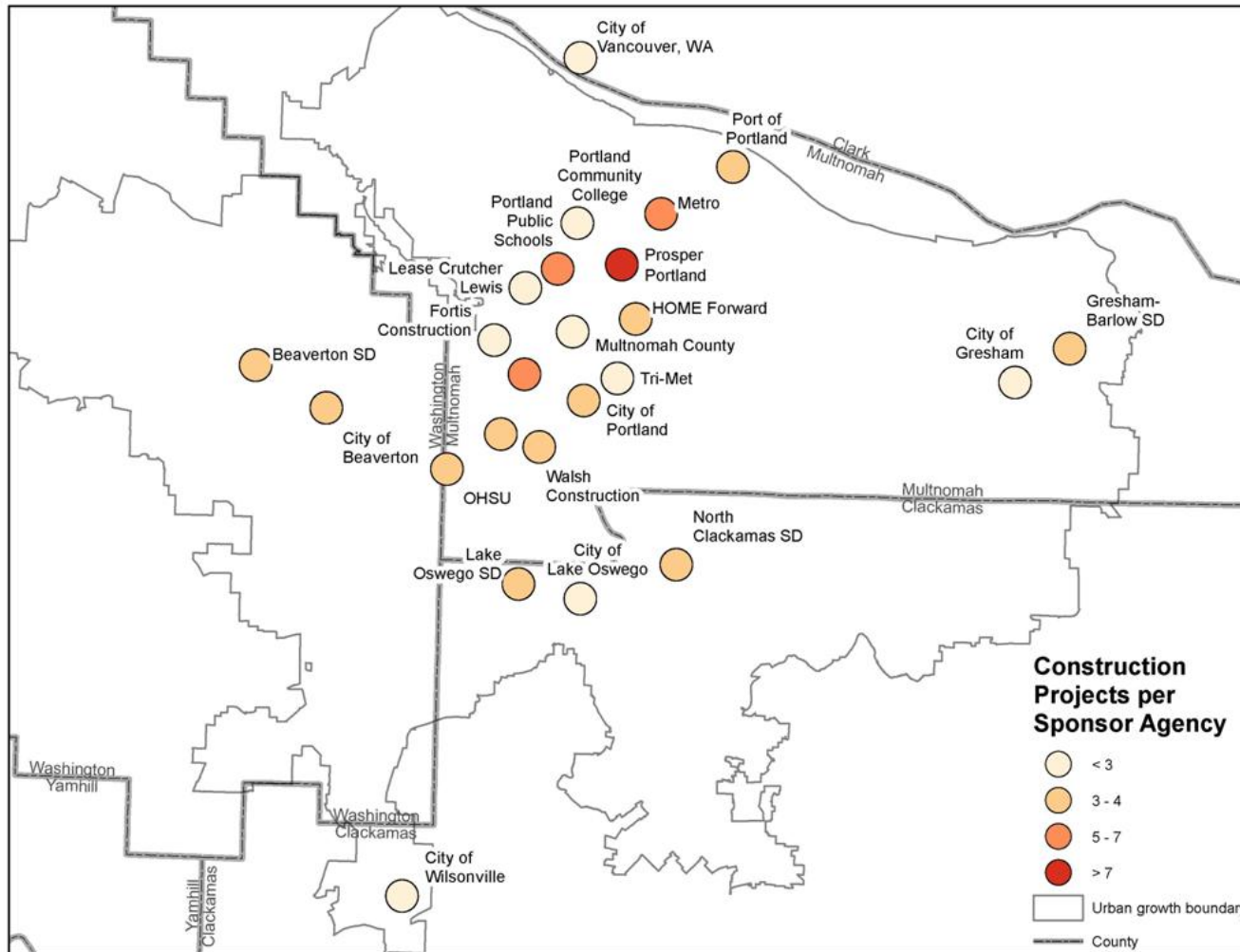
Construction income

**Median Wage of the Working Population
vs. Median Wage for Construction-Related Occupations
Portland Metro Area, 2016**



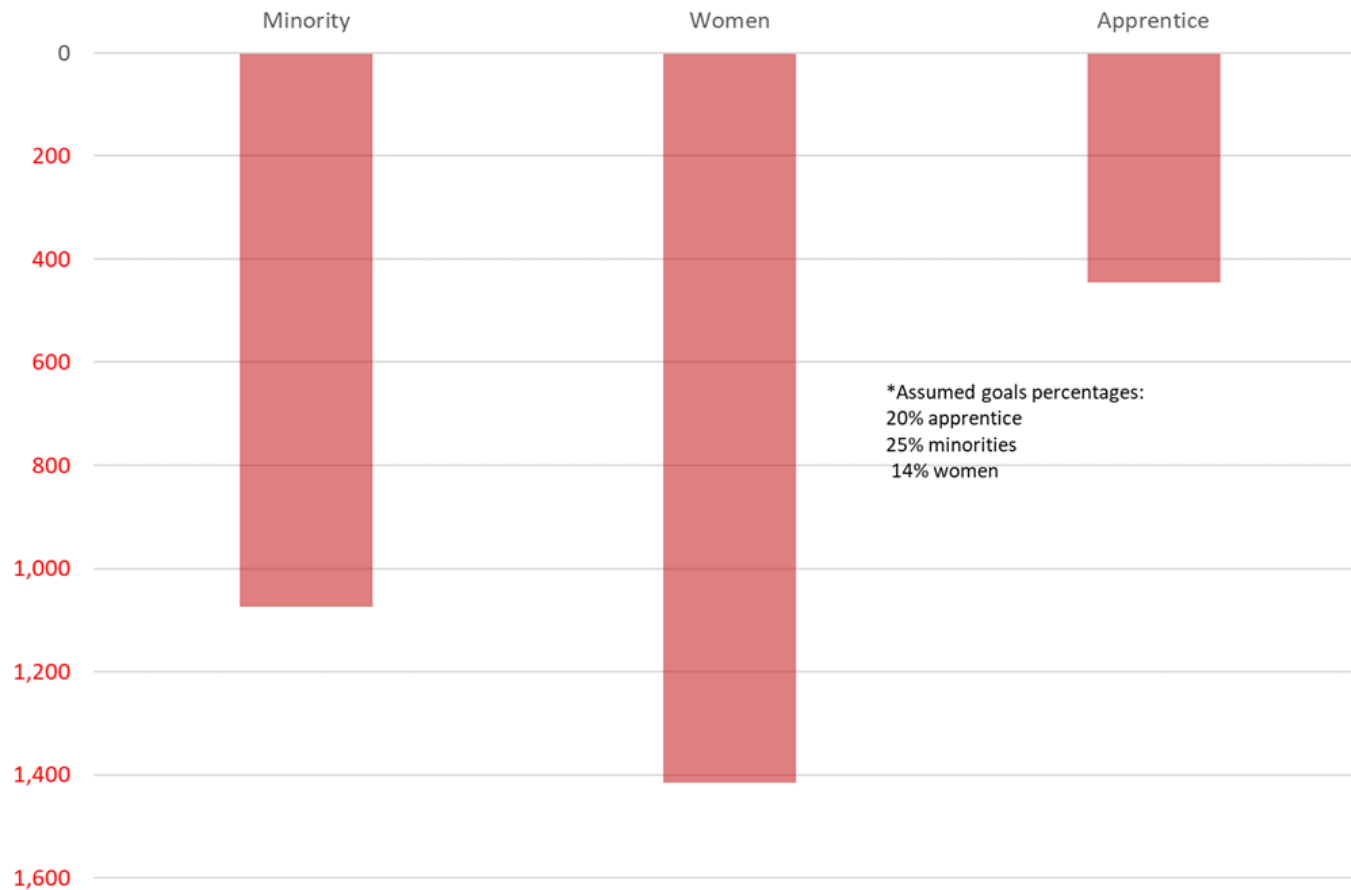
Sources: American Community Survey; Bureau of Labor Statistics

Our opportunity

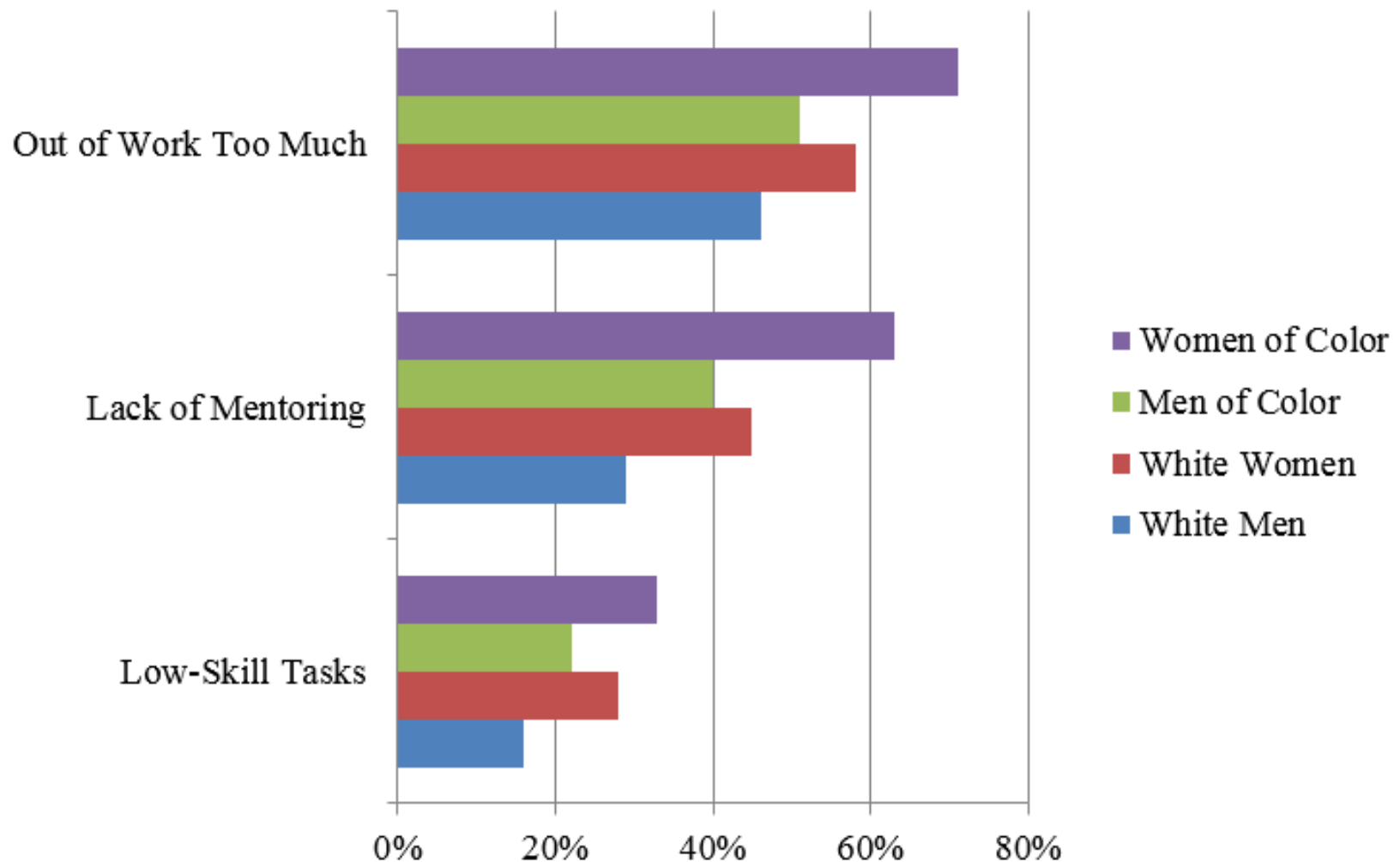


Labor supply

Total deficit of all occupations by worker type



Apprentice challenges



Regional Construction Workforce Market Study



The Portland Metro Workforce Development Board



JM Woolley &
Associates



Seattle-area best practices



2017 Diversity in the Construction Trades Summit



**Welcome to the 3rd Annual
Diversity in the Construction
Trades Summit!**

November 9, 2017

Apprenticeship 101



Bureau of Labor and
Industries

Apprenticeship and Training Division

Apprenticeship 101

January 19, 2018



Public Owner Workgroup

Confirmed

1. Metro
2. Port of Portland
3. OHSU
4. Prosper Portland
5. Portland Public School District
6. Trimet
7. City of Portland
8. Multnomah County

Pending

1. PCC
2. PSU
3. City of Beaverton

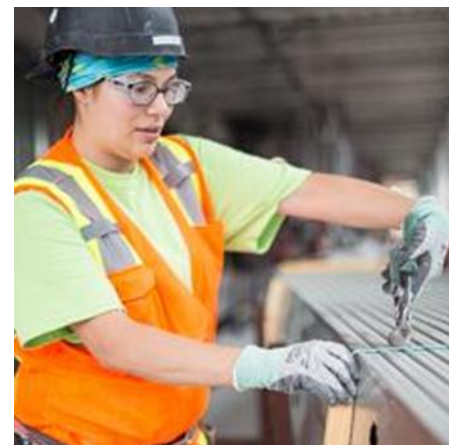
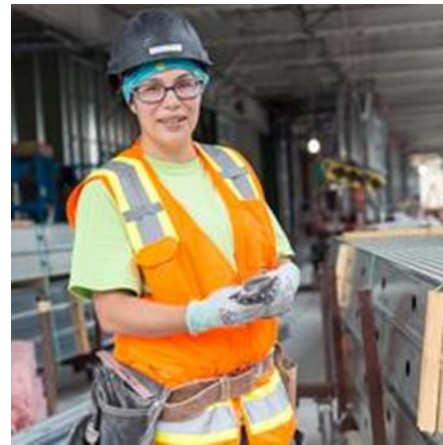
Community Construction Training Program



Community Construction Training Program



Journey level tradeswoman



Questions?

oregonmetro.gov





Metro



Diversity, equity and inclusion at Metro

February 7, 2018

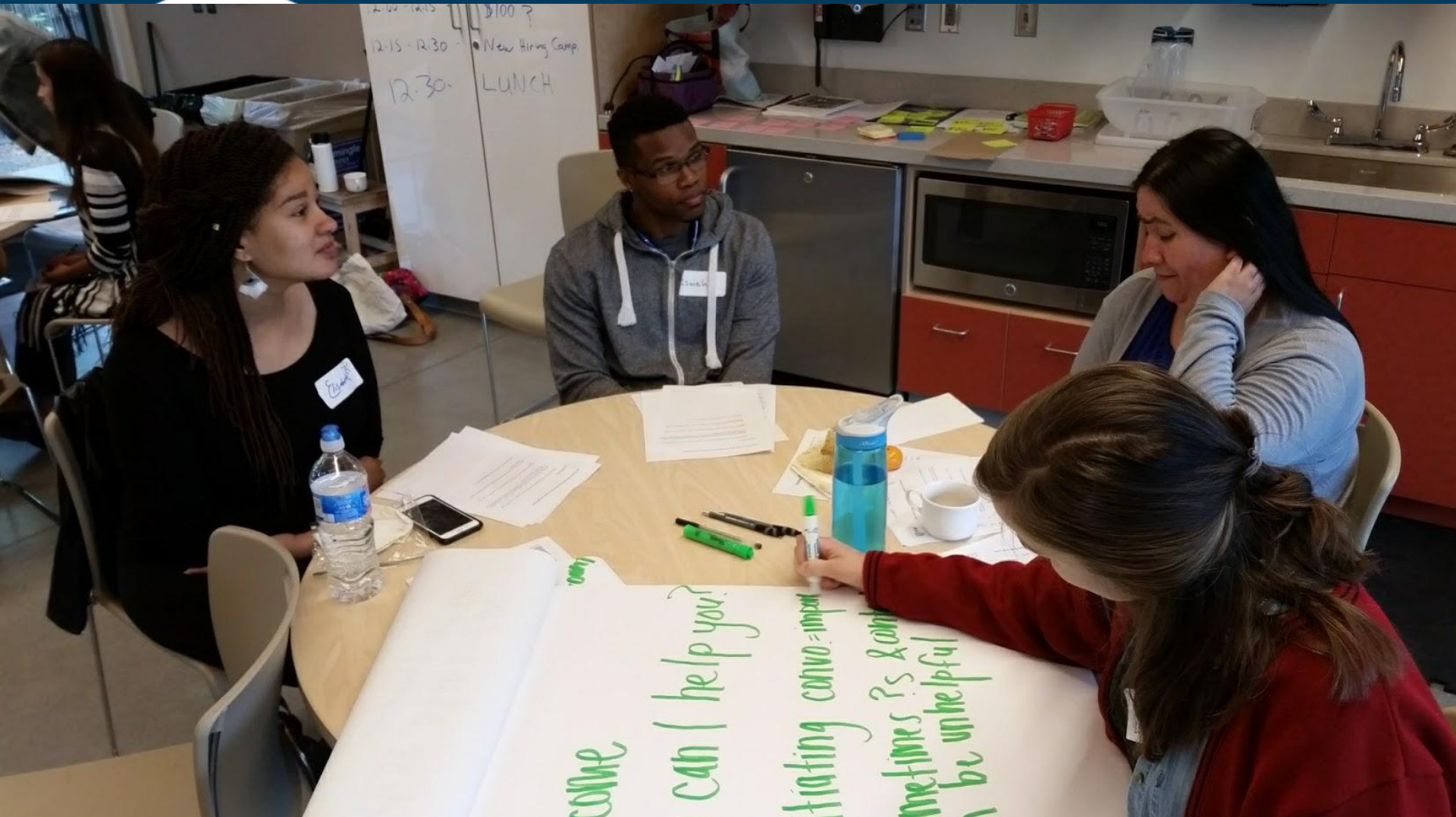
Reflecting on the year

2017

Committee on Racial Equity



Department racial equity plans



Impact evaluation



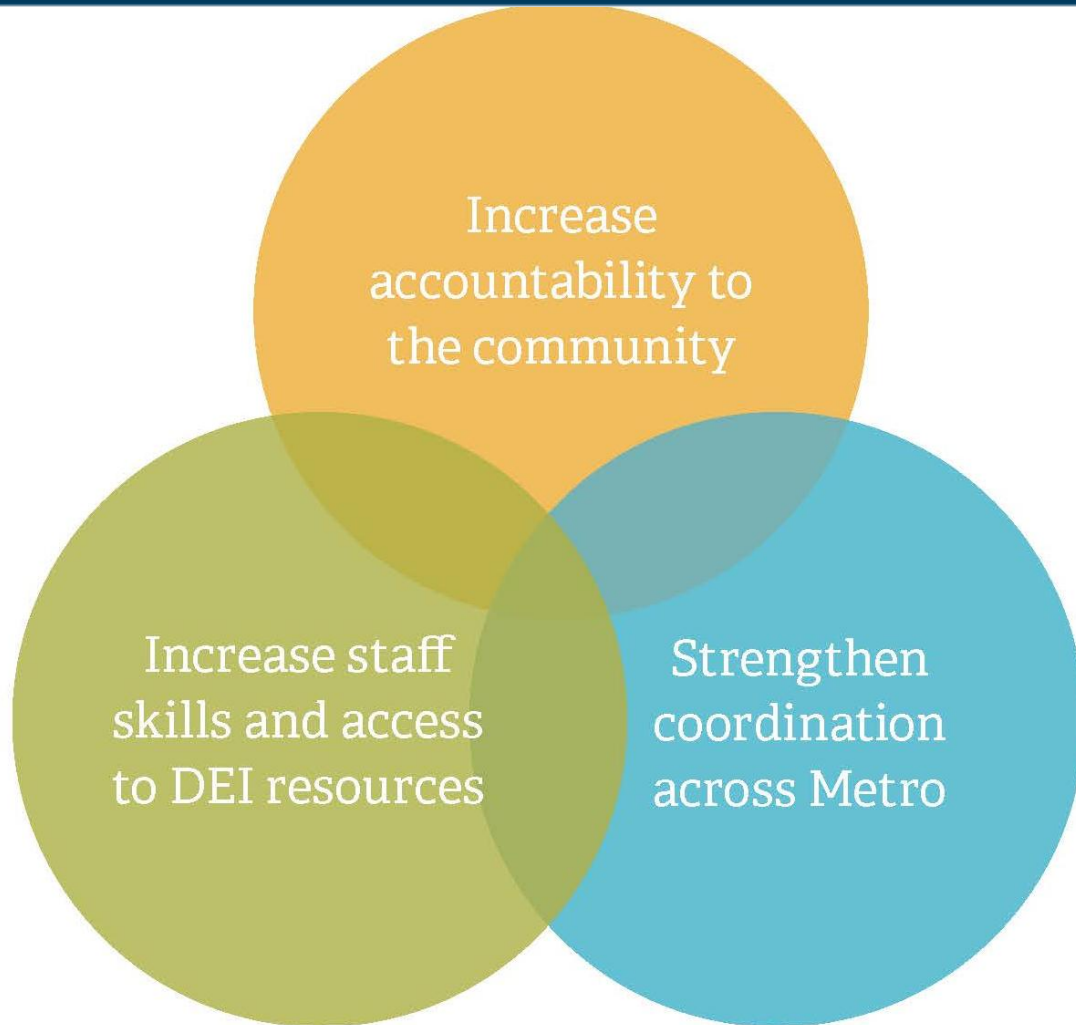
C2P2



Working together



What's on the horizon for DEI



Questions?

oregonmetro.gov

