
Coordinated by:

**Smith & Bybee Lakes Wildlife Area
Management Committee**

Nancy Hendrickson, Chair

Metro

600 NE Grand Ave.
Portland, OR 97232
(503) 797-1870

Smith & Bybee Lakes Management Committee Meeting

5:30 p.m. - 7:00 p.m., Tuesday, October 22, 2002

Metro Regional Center, Room 270

600 N E Grand Ave.

Portland, Oregon 97232

AGENDA

Welcome and introductions	5:30 - 5:35 pm
Approve previous meetings' notes (May, July, Aug, Sept)	5:35 - 5:40 pm
North Portland Road project (John VanStaveren, Pacific Habitat Services)	5:40 - 6:00 pm
Budget report (Elaine Stewart)	6:00 - 6:20 pm
Trail planning and input discussion (Nancy Hendrickson)	6:20 - 6:50 pm
Updates	6:50 - 7:00 pm

Smith & Bybee Lakes Management Committee
Summary Meeting Notes
October 22, 2002
5:30 p.m.

In attendance:

Elaine Stewart	Metro Regional Parks & Greenspaces (RP&G) Wildlife Area Mgr.
Nancy Hendrickson *	Portland Bureau of Environmental Services (BES)
Troy Clark *	Portland Audubon Society
Emily Roth *	The Wetlands Conservancy
Ray Piltz *	St. Johns Neighborhood Association
Jim Morgan *	Metro Executive Office
Patt Opdyke *	North Portland Neighborhoods
Denise Rennis *	Port
Jim Sjulín *	Ptld Parks
Frank Opila *	Friends of Smith & Bybee Lakes
Pat Sullivan	Metro RP&G
Holly Michael *	Oregon Dept of Fish & Wildlife
John Van Staveren	Pacific Habitat Services
Dennis O'Neil	Metro Regional Environmental Management (REM)
Pete Hillman	Metro REM

* denotes voting SBLMC member

Review Meeting Notes

There was a correction to tonight's agenda. Because August and September SBLMC meetings were incorporated into Project Advisory Committee meetings for the new visitor facilities, and the PAC includes representation from the Regional Arts and Culture Council, the notes for those months will be approved at the next PAC meeting.

For lack of a second to the motion to approve the meeting notes from earlier SBLMC meetings in May and July, 2002, their review was moved to the next SBLMC meeting. In the interim, Committee members were asked to review the materials provided them to be able to approve or amend the notes as needed.

North Portland Road Project

Dennis O'Neil provided an historical overview of the project. This project is intended to meet the city's balanced cut and fill requirement related to the St. Johns Landfill perimeter bank stabilization project. More than 7,500 cu yd of material, primarily sand, will be removed from Metro-owned property along North Portland Road. It was hoped to expand this project to a larger area, however, the adjacent property owner (Bennett Broadcasting) was not interested in participating. Sand removed from the Metro parcel will be used to fill a portion of the landfill that has settled and is ponding water, which is not allowed by regulatory agencies. The areas on the North Portland Road parcel and the landfill will be planted with native trees, shrubs, grasses and perennials. REM hired Pacific Habitat Services to evaluate the hydrology of the North Portland Road site, recommend the proper course of treatment that the restoration should follow and create a design to accomplish that goal. The work is expected to begin in July 2003 and be completed in September.

John Van Staveren of Pacific Habitat Services gave a presentation of the design, copies of which were provided to the committee. Information included the seed mixes and plant materials to be used at various elevations, as well as their size, type and quantity. Also discussed were

issues such as irrigation, maintenance and monitoring and the responsibility for those tasks. Metro REM is committed to maintaining the North Portland Road site for at least 5 years. If Committee members are interested in following up on the status of this project, they may contact Pete Hillman at 503-797-1696.

Budget Report

Elaine Stewart presented the Smith & Bybee Lakes Fund draft budget for FY 2003-04. Stewart reported total revenues to the Wildlife Area are anticipated to be \$1.25 million and the total expenditures to be approximately \$1.37 million, creating a shortfall of \$117,000. The Committee was reminded this is a "bare bones" budget. The Metro RP&G Dept. and the Executive Officer will propose that the shortfall be picked up by another fund within Metro, the Regional Parks Fund, rather than cutting into the Smith & Bybee Lakes Fund principal. That remedy will likely only be good for one year, because funding for it relies on the \$1.10 per ton charge on solid waste that has been allotted to Regional Parks. It won't be known until the Metro Council approves the budget whether it will also approve covering the shortfall in this manner. Public input will probably be most effective at Metro Council's budget hearing when they discuss the Parks budget and the Smith & Bybee Lakes Fund. Discussion followed including the declining interest on the fund investments. Jim Sjulín again reminded the Committee that when the SBL Fund was established it was not intended to be the sole source of income; other sources need to be sought. SBL Wildlife Area is one of the sites identified by the Green Ribbon Committee. If those recommendations come to fruition and are implemented, it would provide additional ongoing revenue to S&B. Stewart will track progress and keep the MC informed. Frank Opila raised the issue again of the rising cost of overhead. A motion was made that the SBL Management Committee recommend the adoption of this budget noting that the shortfall is proposed to be covered by the Regional Parks Fund. ~~Second~~. The motion passed with eight in favor, one opposed and one abstention.

Trail Planning and Input Discussion

Nancy Hendrickson distributed a map from the 1990 Natural Resources Management Plan which shows possible projects that could be implemented in the Wildlife Area. A great deal more information and expertise exists now than when the management plan was created. There have been several discussions on trails recently - the alignment, the location on or near the landfill, the IGA between Metro and Portland Parks, etc. It was decided to form a sub-committee which would discuss these issues in more detail, perhaps resulting in a document such as a Committee position paper on trails and/or performance standards for any trail that is built within the Wildlife Area.

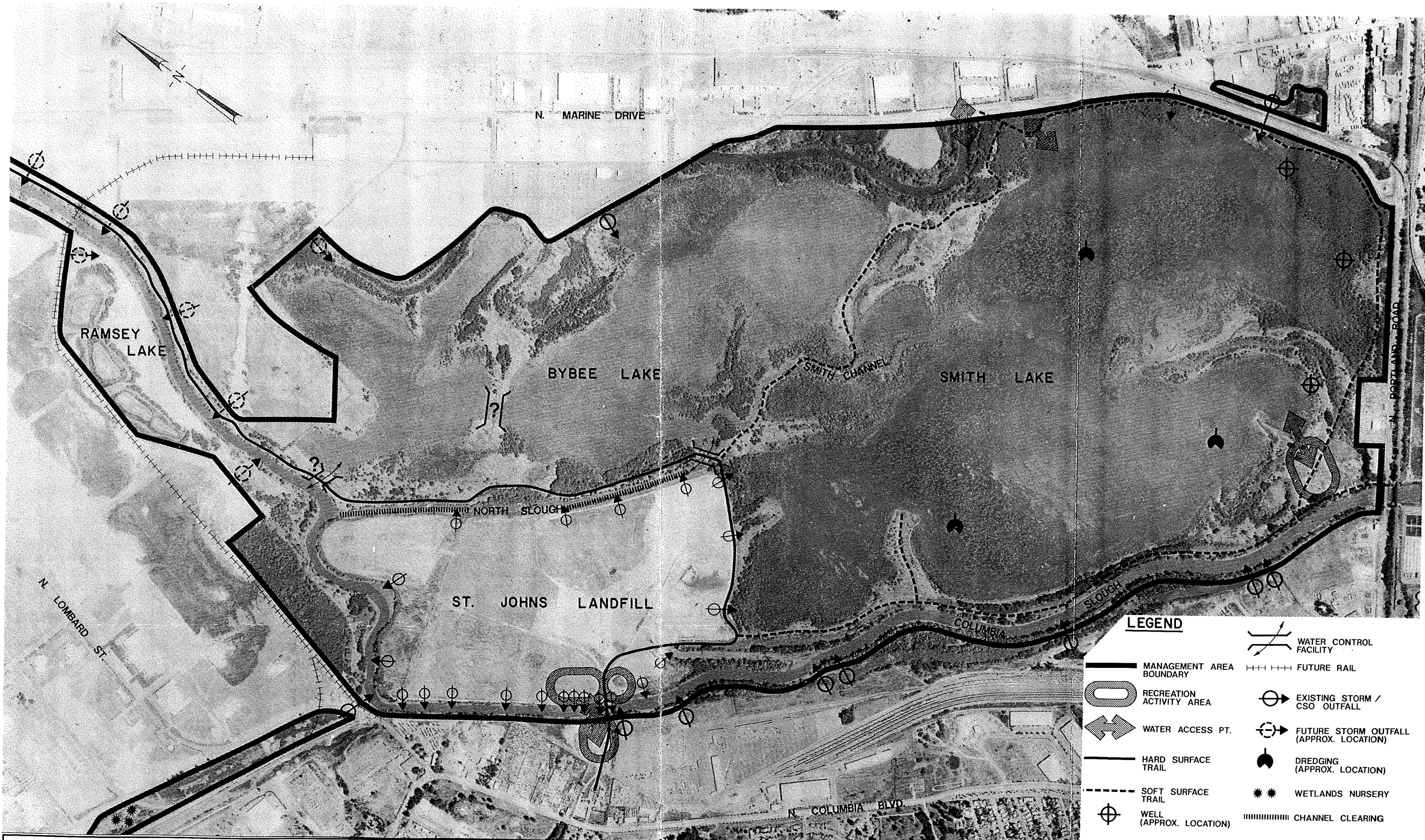
A motion was made to form a sub-committee to work on S&BLMC recommendations for trails (whether it be in the form of a position paper, performance standards or some other format). The motion was passed by a unanimous vote.

Those interested in participating on the sub-committee included: Hendrickson, Opdyke, Sjulín, Clark, Roth, Michael and Rennis. Hendrickson will also contact those not present at this meeting to seek their involvement. It was also requested that the Committee be provided with a list of the "sticking points" to agreement on the trail alignment.

Updates:

- To avoid conflict with November and December holidays, the next meeting of the SBLMC will be Tuesday, December 3rd.

- The final version of the Land Use Review letter to Stacey Wenger at OPDR approved in June was distributed. This letter relates to the Port of Portland's construction of a portion of the 40-mile Loop Trail along the Columbia Slough between Kelly Point Park and the North Slough.
- The Columbia Slough Watershed Council will hold an Open House at the Kennedy School McMenamans, on October 29 regarding their watershed action plan.
- Rennis reported that the Port is working on a project on Old Marine Drive from N Ptld Road to the canoe launch. The project would remove about half of the roadway and plant it, while retaining half of the road for the 40-mile Loop Trail. The Port is undergoing financial difficulties – to go ahead with some of these capital projects, they have to find funding. Another project is a wildlife undercrossing under Time Oil Road.
- The Rivergate consent decree work is finished on the north and south sides of the Columbia Slough, and the Leadbetter property (except for the planting). Rennis offered to take the Committee on a tour and will e-mail members with possible dates. In lieu of a tour, she could give an oral presentation of the projects, but believes that alternative to be less informative.
- Roth alerted the Committee to her intention to propose re-visiting the issue of the floating art in the lakes at the December PAC meeting. She felt there was not enough time for discussion. As she was a member that originally voted in favor of the overall plan she would like to re-open the discussion and re-take the vote. It was also suggested that it may be advantageous to have a facilitator for the discussion; Lora Price will be asked to find one.



LEGEND

- MANAGEMENT AREA BOUNDARY
- SOFT SURFACE TRAIL
- HARD SURFACE TRAIL
- WATER ACCESS PT.
- RECREATION ACTIVITY AREA
- WELL (APPROX. LOCATION)
- EXISTING STORM / CSO OUTFALL
- FUTURE STORM OUTFALL (APPROX. LOCATION)
- DREDGING (APPROX. LOCATION)
- WETLANDS NURSERY
- WATER CONTROL FACILITY
- FUTURE RAIL
- CHANNEL CLEARING

DATE OF PHOTO - AUGUST 5, 1989

Port of Portland

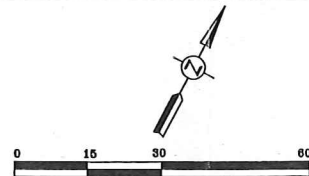
0 500 1000 2000
SCALE IN FEET

SMITH & BYBEE LAKES MANAGEMENT PLAN PROJECTS

FIGURE 5 RG 90-10 3/4 (C-3)

Proposed Plants Above 25' Elevation				
Scientific Name	Common Name	Size/Rate	Type	Quantity
WOODY PLANTS				
<i>Rhamnus purshiana</i>	casacara	24-36"	container	26
<i>Acer macrophyllum</i>	bigleaf maple	24-36"	container	18
<i>Pseudotsuga menziesii</i>	Douglas fir	24-36"	container	18
<i>Holodiscus discolor</i>	oceanspray	18-24"	container	20
<i>Prunus virginiana</i>	choke cherry	24-36"	container	30
<i>Quercus garryana</i>	Oregon white oak	12"	container	76
<i>Rubus parviflorus</i>	thimbleberry	12-18"	container	76
SEED MIX				
<i>Elymus glaucus</i>	blue wildrye	1 lb/1000 ft ²		
<i>Bromus carinatus</i>	California brome	1 lb/1000 ft ²		
<i>Festuca occidentalis</i>	western fescue	1 lb/1000 ft ²		
<i>Lupinus bicolor</i>	miniature lupin	0.3 lb/1000 ft ²		
<i>Solidago canadensis</i>	Canada goldenrod	0.1 lb/1000 ft ²		

Proposed Plants Between 15-25' Elevations				
Scientific Name	Common Name	Size/Rate	Type	Quantity
WOODY PLANTS				
<i>Populus balsamifera trichocarpa</i>	black cottonwood	24-36"	container	100
<i>Sambucus mexicana</i>	red elderberry	24-36"	container	120
<i>Rhamnus purshiana</i>	casacara	24-36"	container	120
<i>Alnus rubra</i>	red alder	24-36"	container	80
<i>Crataegus suksdorfii</i>	black hawthorn	24-36"	container	166
<i>Quercus garryana</i>	Oregon white oak	12"	container	17
<i>Rubus parviflorus</i>	thimbleberry	12-18"	container	17
SEED MIX				
<i>Elymus glaucus</i>	blue wildrye	1 lb/1000 ft ²		
<i>Bromus carinatus</i>	California brome	1 lb/1000 ft ²		
<i>Festuca occidentalis</i>	western fescue	1 lb/1000 ft ²		
<i>Lupinus bicolor</i>	miniature lupin	0.3 lb/1000 ft ²		
<i>Solidago canadensis</i>	Canada goldenrod	0.1 lb/1000 ft ²		

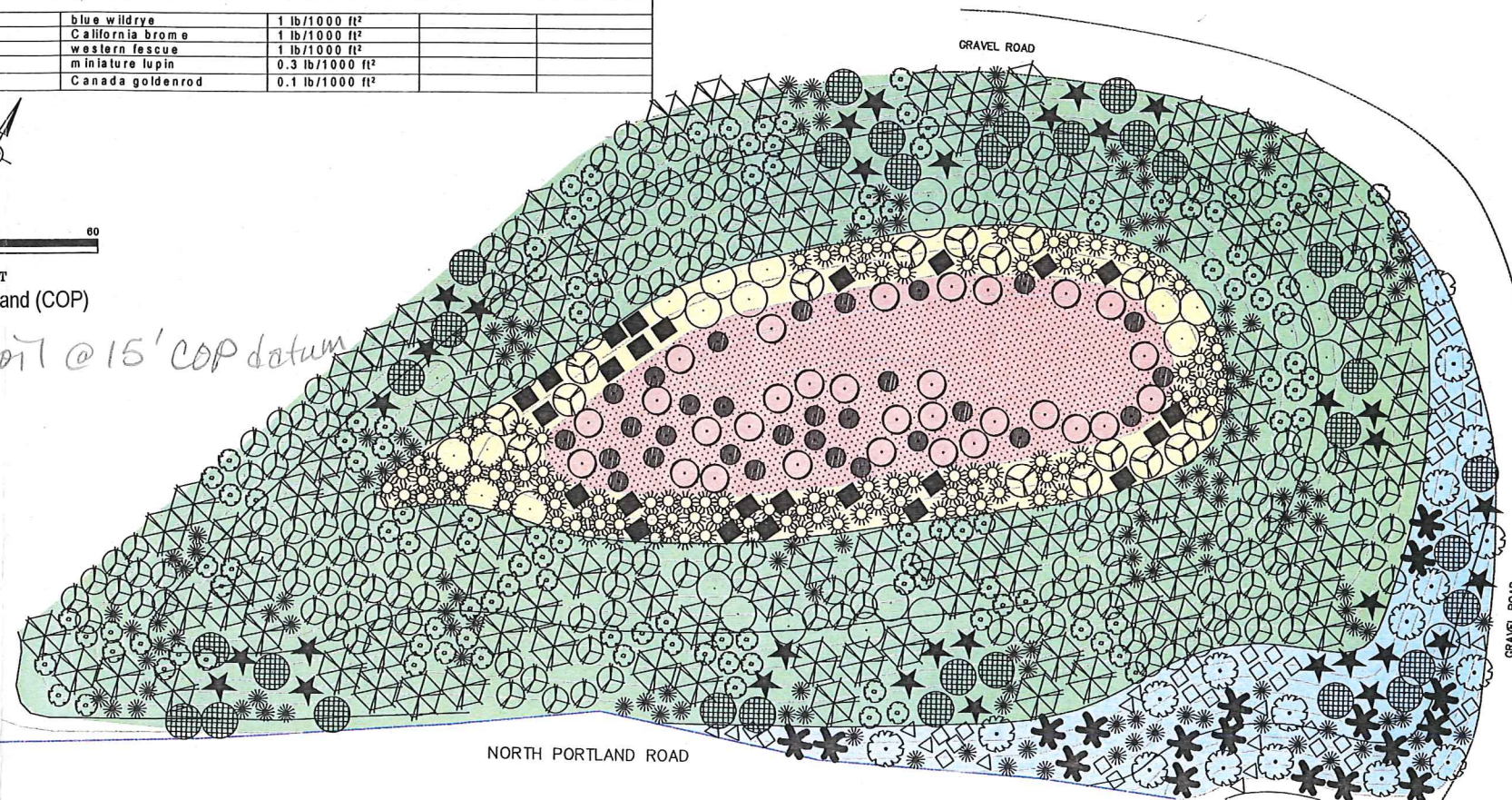


SCALE IN FEET
Datum: City of Portland (COP)

native soil @ 15' COP datum

Proposed Plants Between 13-15' Elevations				
Scientific Name	Common Name	Size/Rate	Type	Quantity
WOODY PLANTS				
<i>Salix scouleriana</i>	Scouler's willow	24-36"	container	110
<i>Oemleria cerasiformis</i>	indian plum	18-24"	container	25
<i>Alnus rubra</i>	red alder	24-36"	container	12
<i>Fraxinus latifolia</i>	Oregon ash	24-36"	container	15
SEED MIX				
<i>Deschampsia cespitosa</i>	tufted hairgrass	0.2 lb/1000 ft ²		
<i>Hordeum brachyantherum</i>	meadow barley	0.1 lb/1000 ft ²		

Proposed Plants Below 13' Elevation				
Scientific Name	Common Name	Size/Rate	Type	Amount
WOODY PLANTS				
<i>Salix lucida lasiandra</i>	pacific willow	24-36"	container	30
<i>Salix sitchensis</i>	Sitka willow	24-36"	container	30
<i>Scirpus microcarpus</i>	small-fruited bulrush		bare root	600
<i>Juncus tenuis</i>	slender rush		bare root	800
SEED MIX				
<i>Deschampsia cespitosa</i>	tufted hairgrass	0.2 lb/1000 ft ²		
<i>Beckmannia syzigachne</i>	sloughgrass	0.1 lb/1000 ft ²		
<i>Glyceria elata</i>	tall mannagrass	0.1 lb/1000 ft ²		



PACIFIC HABITAT SERVICES
9450 SW Commerce Circle, Ste. 180
Portland, OR 97209
Phone: (503) 570-0800
Fax: (503) 570-0855
E-mail: phs@pacifichabitat.com

METRO REGIONAL ENVIRONMENTAL
MANAGEMENT DEPT.
600 NE GRAND AVENUE
PORTLAND, OR 97232-2736

SMITH LAKE / ST. JOHNS LANDFILL

REVISION NUMBER

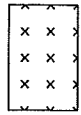
No.	Date	Revision

Date: 9/15/02
Drawn By: []
Checked By: []

Sheet Name: []
Sheet No.: []
Project No.: METRO001

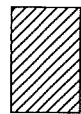
Proposed Seed Mix Above 15' Elevation

Scientific Name	Common Name	Size/Rate
SEED MIX		
<i>Elymus glaucus</i>	blue wildrye	1 lb/1000 ft ²
<i>Bromus carinatus</i>	California brome	1 lb/1000 ft ²
<i>Festuca occidentalis</i>	western fescue	1 lb/1000 ft ²
<i>Lupinus bicolor</i>	miniature lupin	0.3 lb/1000ft ²
<i>Solidago canadensis</i>	Canada goldenrod	0.1 lb/1000ft ²



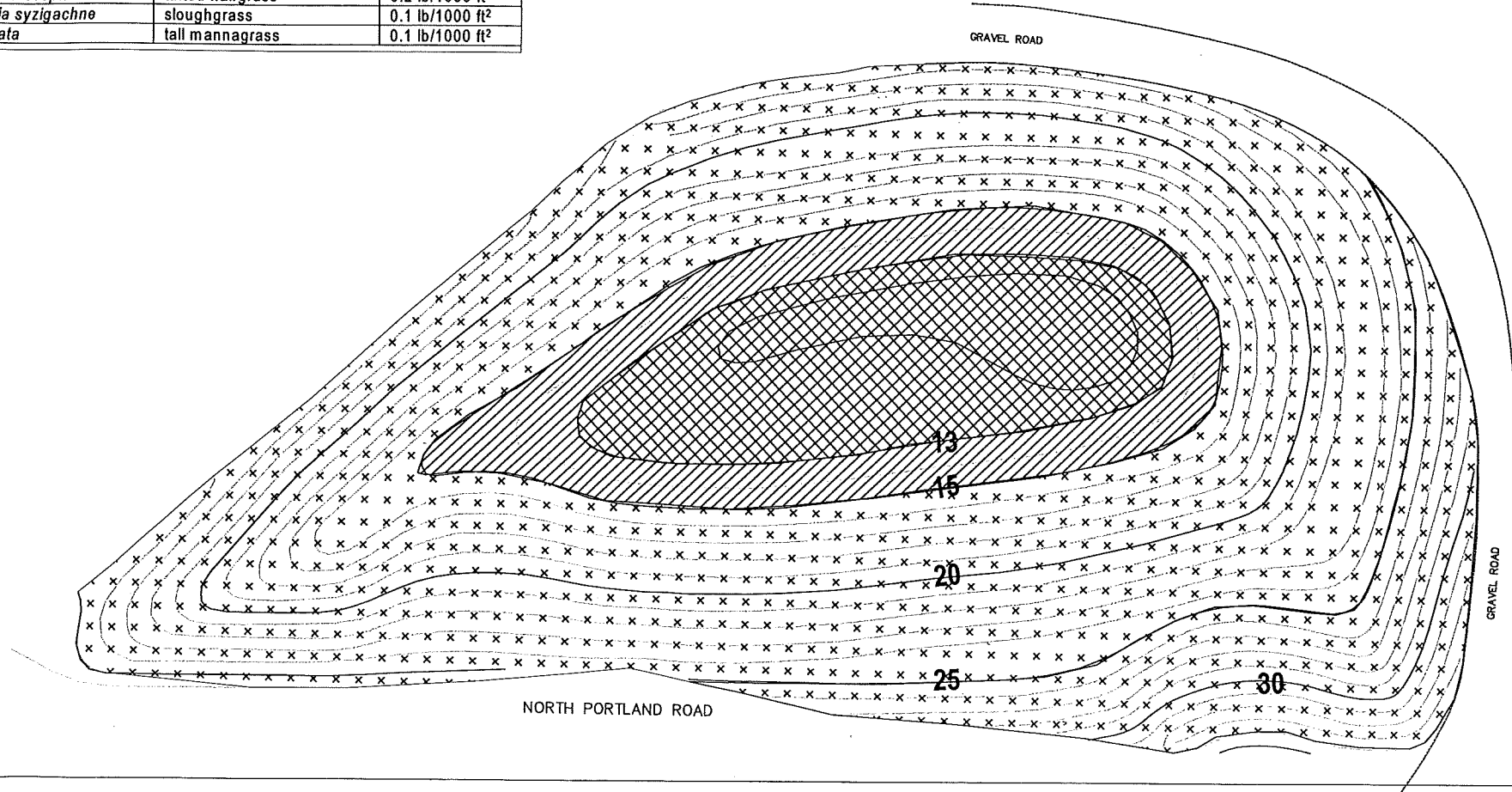
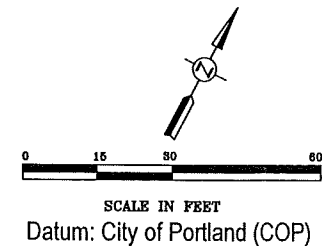
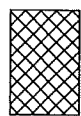
Proposed Seed Mix Between 13-15' Elevations

Scientific Name	Common Name	Size/Rate
SEED MIX		
<i>Deschampsia cespitosa</i>	tufted hairgrass	0.2 lb/1000 ft ²
<i>Hordeum brachyantherum</i>	meadow barley	0.1 lb/1000 ft ²



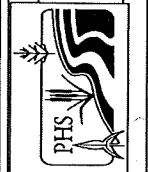
Proposed Seed Mix Below 13' Elevation

Scientific Name	Common Name	Size/Rate
SEED MIX		
<i>Deschampsia cespitosa</i>	tufted hairgrass	0.2 lb/1000 ft ²
<i>Beckmannia syzigachne</i>	sloughgrass	0.1 lb/1000 ft ²
<i>Glyceria elata</i>	tall mannagrass	0.1 lb/1000 ft ²



BLACKBERRIES & BRUSH

PACIFIC HABITAT SERVICES
 9450 SW Cedar Hills Blvd
 Wilsonville, Oregon 97070
 Phone: (503) 570-0800
 E-mail: phs@pacifichabitat.com



METRO REGIONAL ENVIRONMENTAL
 MANAGEMENT DEPT.
 600 NE GRAND AVENUE
 PORTLAND, OR 97232-2736
SMITH LAKE / ST. JOHNS LANDFILL

REVISION NUMBER	
No. Date Description	
Date: 9/15/02	Compiled By:
Drawn By:	Checked By:
Sheet Name:	
Sheet No.:	
Project No.: METRO001	

Proposed Plants Above 25' Elevation

Scientific Name	Common Name	Size/Rate	Type	Quantity
WOODY PLANTS				
<i>Rhamnus purshiana</i>	casacara	24-36"	container	26
<i>Acer macrophyllum</i>	bigleaf maple	24-36"	container	18
<i>Pseudotsuga menziesii</i>	Douglas fir	24-36"	container	18
<i>Holodiscus discolor</i>	oceanspray	18-24"	container	20
<i>Prunus virginiana</i>	choke cherry	24-36"	container	30
<i>Quercus garryana</i>	Oregon white oak	12"	container	16
<i>Rubus parviflorus</i>	thimbleberry	12-18"	container	16

Proposed Plants Between 15-25' Elevations

Scientific Name	Common Name	Size/Rate	Type	Quantity
WOODY PLANTS				
<i>Populus balsamifera trichocarpa</i>	black cottonwood	24-36"	container	100
<i>Sambucus mexicana</i>	red elderberry	24-36"	container	120
<i>Rhamnus purshiana</i>	casacara	24-36"	container	120
<i>Alnus rubra</i>	red alder	24-36"	container	80
<i>Crataegus suksdorfii</i>	black hawthorn	24-36"	container	166
<i>Quercus garryana</i>	Oregon white oak	12"	container	17
<i>Rubus parviflorus</i>	thimbleberry	12-18"	container	17

Proposed Plants Between 13-15' Elevations

Scientific Name	Common Name	Size/Rate	Type	Quantity
WOODY PLANTS				
<i>Salix scouleriana</i>	Scouler's willow	24-36"	container	110
<i>Oemleria cerasiformis</i>	indian plum	18-24"	container	25
<i>Alnus rubra</i>	red alder	24-36"	container	12
<i>Fraxinus latifolia</i>	Oregon ash	24-36"	container	15

Proposed Plants Below 13' Elevation

Scientific Name	Common Name	Size/Rate	Type	Amount
WOODY PLANTS				
<i>Salix lucida lasiandra</i>	pacific willow	24-36"	container	30
<i>Salix sitchensis</i>	Silka willow	24-36"	container	30
<i>Scirpus microcarpus</i>	small-fruited bulrush		bare root	600
<i>Juncus tenuis</i>	slender rush		bare root	800

* *Pseudotsuga menziesii*

⊠ *Populus balsamifera trichocarpa*

○ *Alnus rubra*

⊗ *Fraxinus latifolia*

⊙ *Acer macrophyllum*

⊘ *Crataegus suksdorfii*

☼ *Salix scouleriana*

● *Salix lucida lasiandra*

⊙ *Sambucus mexicana*

■ *Oemleria cerasiformis*

▽ *Holodiscus discolor*

□ *Prunus virginiana*

* *Rhamnus purshiana*

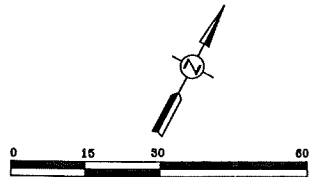
○ *Salix sitchensis*

⊙ *Quercus garryana*

★ *Rubus parviflorus*

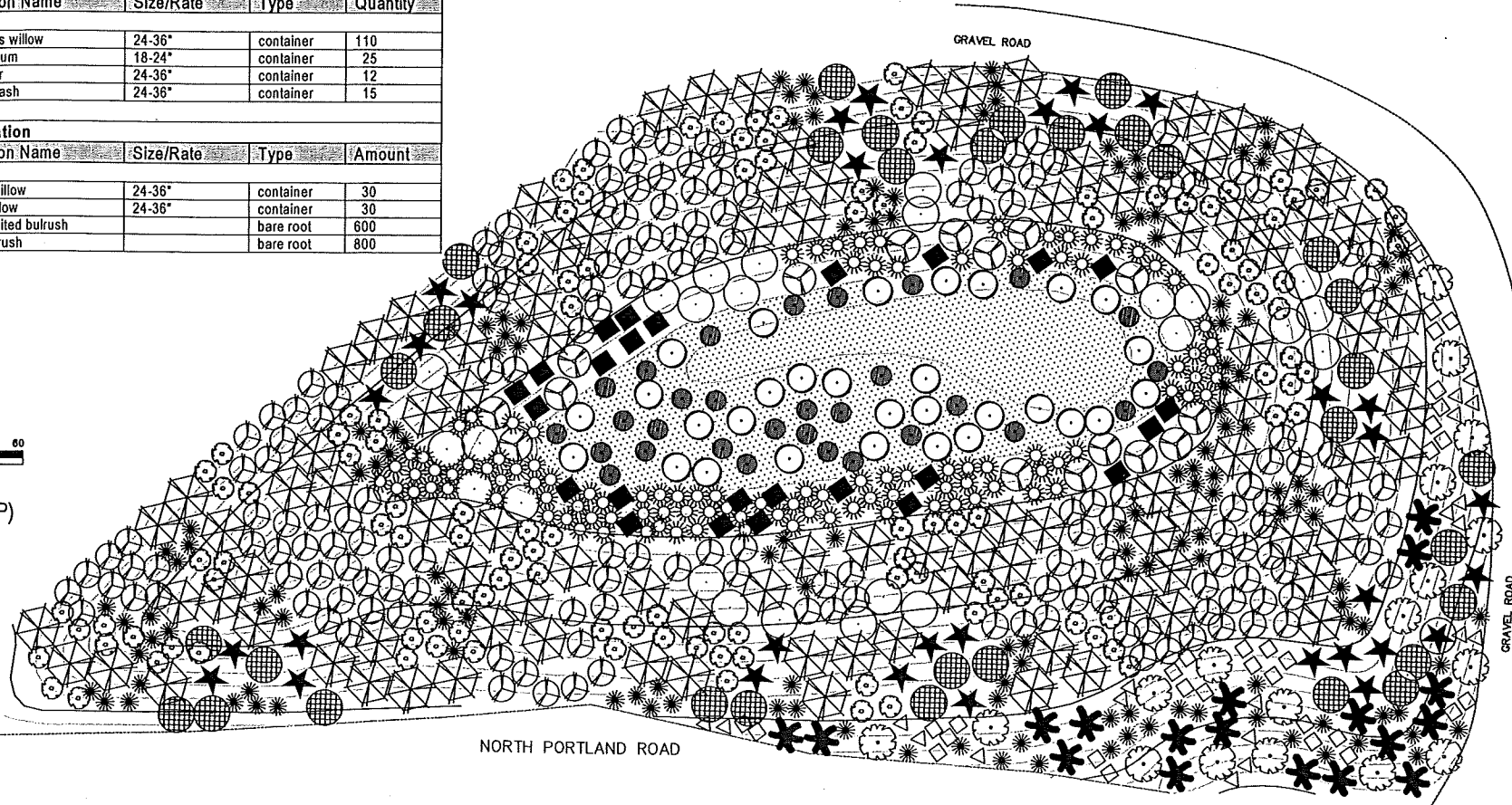
⊠ *Scirpus microcarpus*

⊠ *Juncus tenuis*



SCALE IN FEET

Datum: City of Portland (COP)



BLACKBERRIES & BRUSH

PACIFIC HABITAT SERVICES
 9430 SW Canyon Blvd, Suite 300
 Wilsonville, Oregon 97170
 Phone: 503-777-0690
 Fax: 503-777-0690
 E-mail: phspacific@pacifihab.com

**METRO REGIONAL ENVIRONMENTAL
 MANAGEMENT DEPT.**
 600 NE GRAND AVENUE
 PORTLAND, OR 97232-2736

SMITH LAKE / ST. JOHNS LANDFILL

REVISION NUMBER

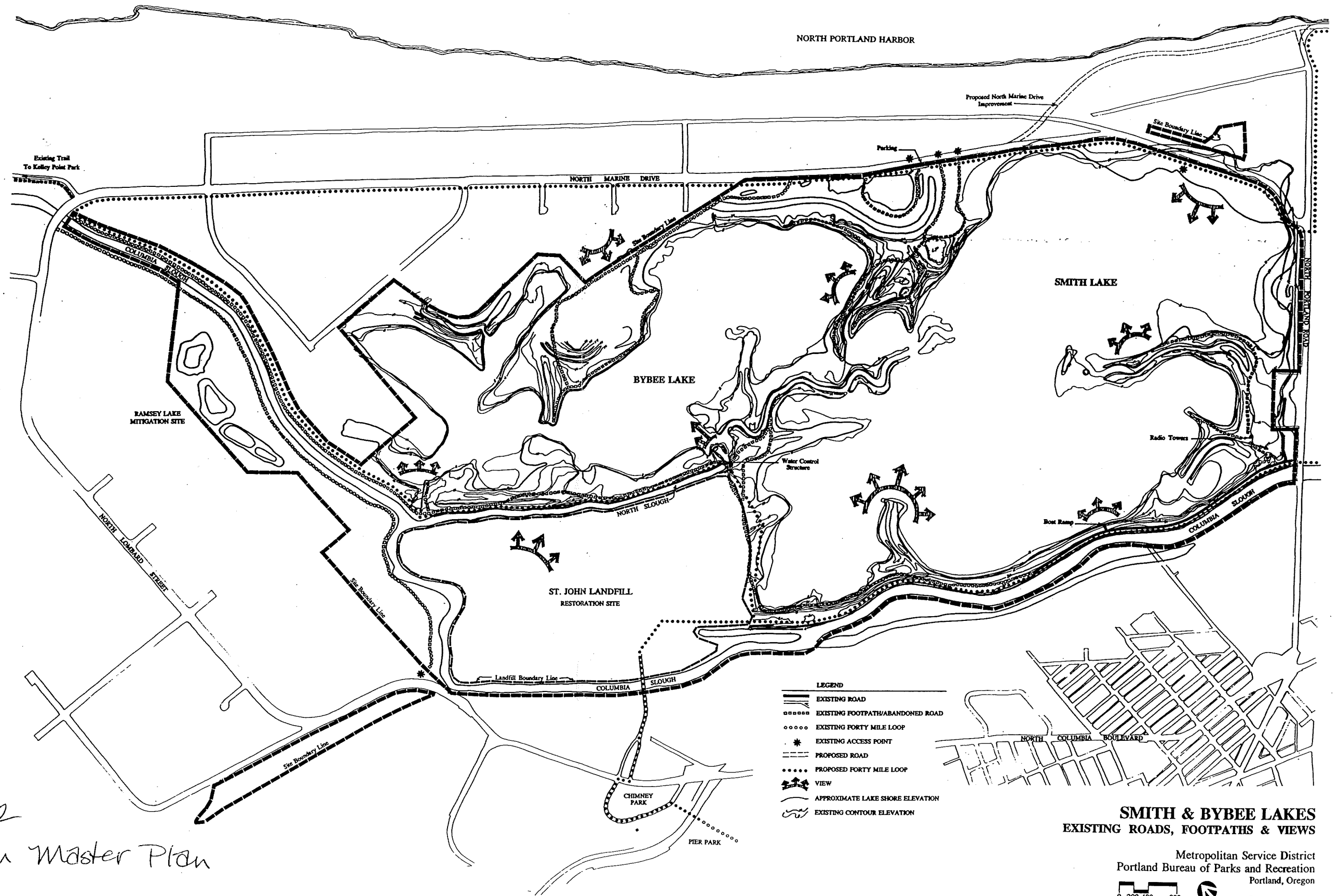
No.	Date	Revision

Date: 9/25/02
 Drawn By: [blank]
 Checked By: [blank]

Sheet Name: [blank]

Sheet No.: [blank]

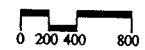
Project No.: **METRO001**



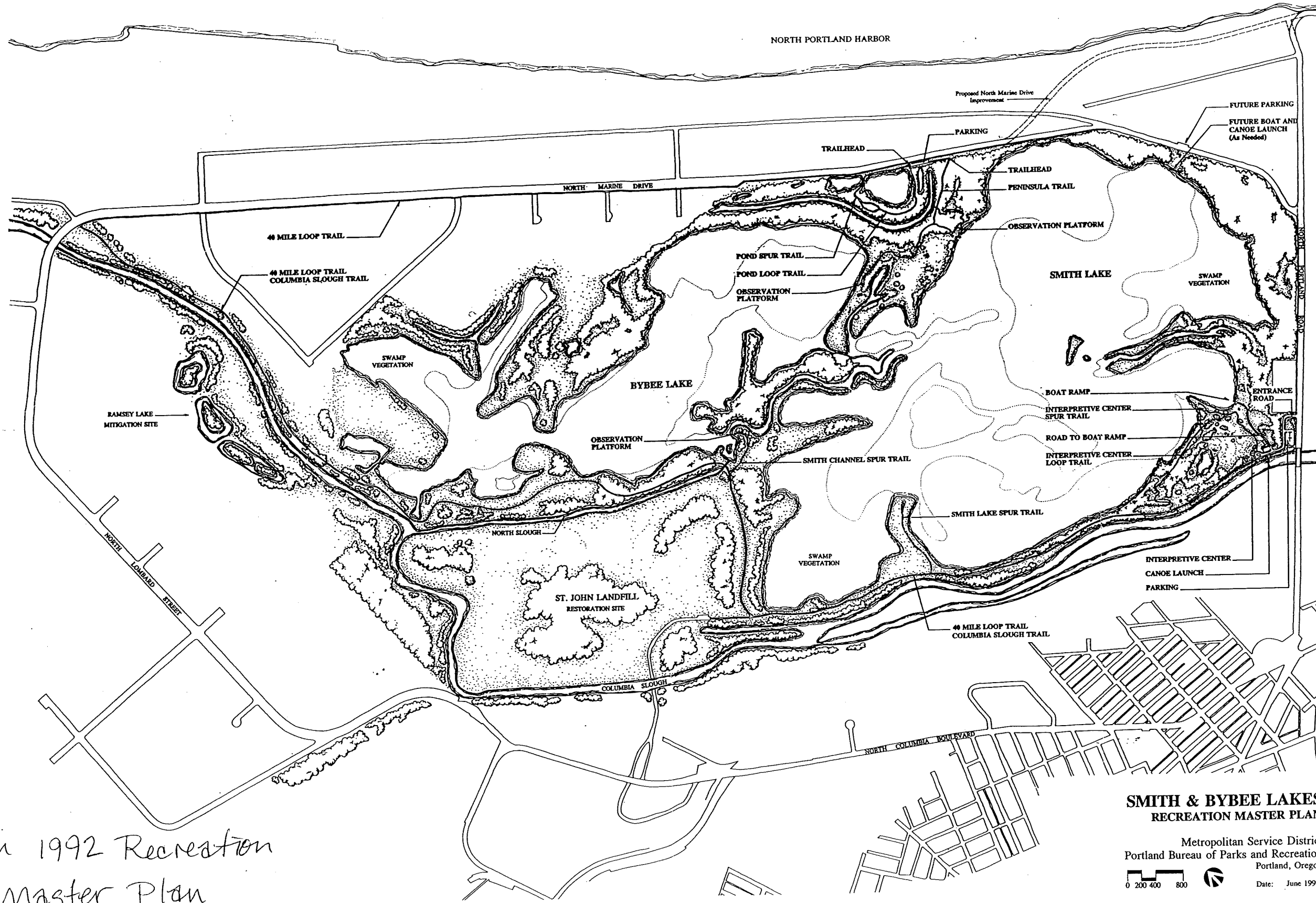
From 1992
Recreation Master Plan

**SMITH & BYBEE LAKES
EXISTING ROADS, FOOTPATHS & VIEWS**

Metropolitan Service District
Portland Bureau of Parks and Recreation
Portland, Oregon



Date:



From 1992 Recreation
Master Plan

**SMITH & BYBEE LAKES
RECREATION MASTER PLAN**

Metropolitan Service District
Portland Bureau of Parks and Recreation
Portland, Oregon



Date: June 1992

Smith and Bybee Lakes Fund Draft Budget; July 1, 2003 – June 30, 2004

Revenues			
<i>Grant or other dedicated funding</i>			
Facility grants (federal, state)	\$ 253,570		
Port of Portland contribution to facility design	10,000		
Public art funds for facility	200,000		
Local share reallocation for facility	190,000		
Consent decree funds for restoration projects	90,000		
Water control structure grants	438,500		
Sub-total		\$ 1,182,070	
<i>Discretionary funding</i>			
Interest earnings on fund balance at 2 percent	\$ 71,169		
Charges for educational programs	1,500		
Sub-total		72,669	
Total Revenues			\$ 1,254,739
Expenditures			
<i>Personal services</i>			
Salaries and fringe (manager, naturalist, seasonal)	\$ 118,231		
Sub-total		118,231	
<i>Operating supplies and other expenses</i>			
Office and operating supplies	\$ 3,900		
Telephone	700		
Equipment rental	500		
Employee reimbursements (uniforms, mileage)	500		
Staff development	1,050		
Payments to other agencies (mostly pickup M&R)	5,500		
Pickup parking space at Metro Regional Center	1,000		
Overhead and other transfers	58,475		
Sub-total		71,625	
<i>Projects with grant or other dedicated funding</i>			
Water control structure	\$ 438,500		
Turtle nesting habitat project (consent decree)	30,000		
Old parking lot restoration (consent decree)	20,000		
Maintenance of restoration sites (consent decree)	40,000		
New facility	453,570		
Public art for new facility	200,000		
Sub-total		1,182,070	
Total Expenditures			\$ 1,371,926
Shortfall			\$ 117,187

coordinated by:

**Smith & Bybee Lakes Wildlife Area
Management Committee**

*Nancy Hendrickson, Chair
Troy Clark, Vice Chair*

Metro

600 NE Grand Ave.
Portland, OR 97232
(503) 797-1515

October 18, 2002

Stacey Wenger
Planner
OPDR
1200 SW 4th Avenue
Portland, OR 97204

Re: LUR 02-134231 EN

Dear Ms. Wenger,

By majority vote, the Smith & Bybee Lakes Management Committee (SBLMC) recommends support for the trail proposed in LUR 02-134231 EN. It should be noted that the vote was not unanimous. Several concerns were raised on both sides:

In support:

- The trail is consistent with the NRMP. It is shown as a potential project on the Figure 5 map.
- It is very important to connect with the 40-Mile Loop trail in this area. The neighborhoods want access. Trails have been planned for this area and should be constructed as soon as possible.
- The Consent Decree requires that the Port build the trail in this location unless the City withdraws the trail requirement with respect to the Port. The City has not withdrawn the requirement. Furthermore, once work to fulfill the requirements of the Consent Decree is finished, the Port is prohibited from disturbing the restoration areas by any activities that are inconsistent with the Consent Decree. Therefore any future trail alignment would be prohibited in this area.
- The number of trees eliminated due to trail design has been reduced from 200 to less than 10.
- The number of days of trail closure due to high water has been reduced from 180 to 15.

Not in support:

- The trail is inconsistent with aspects of the NRMP, specifically on page 48, paragraph 6, which states that, "another strategy employed by the Plan is intentionally not providing access facilities (e.g. nearby parking, trails, directional information to Bybee Lake.)"
- The trail does not fulfill the objectives of the 40-mile Loop trail because bicycling and dogs are not allowed within the Wildlife Area. How these activities will be deterred on the Lakes segment of the proposed trail has not been defined.
- The final and optimum placement for the trail in the Wildlife Area has not yet been determined. The design of the proposed trail should be integrated in the final design of the trail in the Wildlife Area.

The final recommendation of the SBLMC is to support the proposed trail, but would like the design to include deterrents at the east "dead end" of the trail and along the trail itself where it borders Bybee Lake. Deterrents would discourage people from leaving the trail to wander in the Wildlife Area. Deterrents should include signage and vegetative and/or structural impediments along the trail and at

From: "Rennis, Denise" <rennid@portptld.com>
To: "Hendrickson, Nancy" <NANCYH@BES.CI.PORTLAND.OR.US>, 'Dennis Meyer' <dnmeyer@eastwindnet.com>, Bill Briggs <BillB@bio-stim.com>, "Rennis, Denise" <rennid@portptld.com>, Elaine Stewart <stewarte@metro.dst.or.us>, Frank Opila <FrankO@hevanet.com>, Holly Michael <Holly.B.Michael@state.or.us>, Jim Morgan <MorganJ@metro.dst.or.us>, Kevin O'Sullivan <mandala@transport.com>, Pam Arden <npdarden@teleport.com>, Pat Sullivan <SullivanP@metro.dst.or.us>, Patt Opdyke <popdyke@pacifier.com>, Peter Teneau <tenwa@jps.net>, "Sjulín, Jim" <PKJIMS@ci.portland.or.us>, Troy Clark <brillobrain@ureach.com>, "oneild@metro.dst.or.us" <oneild@metro.dst.or.us>, 'Emily Roth' <emroth@hevanet.com>
Date: 11/7/02 8:58AM
Subject: RE: Site visit to Rivergate Consent Decree Mitigation area

A number of people have expressed interest in a site visit to the the Rivergate Consent Decree mitigation area. This would include the north and south slough elements (between the Lombard bridge and railroad bridge) and Leadbetter. The other sections have not been completed. Planting is scheduled for these first three elements sometime this month, so depending on the weather, the planting may or may not be finished by the time we visit the site. Another site visit will be scheduled in February/March for those who cannot make the date we set for this first site visit. Here are some suggested times. Please let me know (as quickly as possible so I can lock in the time) which ones you can make and I'll select the one that the majority of people can attend. Meeting place would be Kelley Point Park.

(Nancy, can you let me know if I've missed anyone on this list? Thanks).

Monday December 2, 1-3pm
Tuesday December 3, 10-12noon
Wednesday December 4, 10-12 noon
Thursday December 5, 1-3pm

Denise

From: Charlie Ciecko
To: Patricia Sullivan
Date: 11/25/02 2:06PM
Subject: Re: Smith & Bybee Lakes Management Committee agenda

Pat, could you double check the budget numbers mentioned in the meeting minutes.....are they correct? If so, pls work with Elaine to find the right wording to differentiate between the operations and capital portions of the budget. Thanks

>>> Patricia Sullivan 11/25/02 01:21PM >>>

Attached is the agenda for the next S&BLMC meeting. To avoid conflict with the holidays in Nov and Dec, the next meeting will be held on Tues, Dec 3. Also attached are the meeting notes from the Oct 22 meeting. ps

Potential Subject Areas for Trail Discussion

I thought it might be helpful to outline some possible areas of discussion for the trail subcommittee, as a starting point to help get your thoughts moving. Please add your own thoughts to the list in preparation of the subcommittee meeting. Hopefully this will help you make the best use of your time in the subcommittee.

1. Impacts of existing development and trails (what has been learned from the development that is already in place).
2. Existing policies and practices at the wildlife area (e.g., no dogs or bikes; baseline maintenance standards).
3. Conceptual and actual plans for trails and development (include all plans: NRMP, Recreation Master Plan, Recreational Facilities Plan, the Port's consent decree work).
4. Guidance from the Natural Resources Management Plan for Smith and Bybee Lakes.
5. Best management practices or performance standards.
6. New developments and/or information that updates our understanding of the trail issue at the wildlife area.
7. Known or suspected impacts of additional trails/development on wildlife, vegetation and operations and maintenance of area.
8. Benefits of additional public access and use.
9. Optimum balance between public access and resource protection.
10. Recommendations (what does the subcommittee want to cover, as well as the actual recommendations themselves).