



Annual Listing of Federally Obligated Projects

Federal fiscal year 2017

(October 1, 2016 – September 30, 2017)

Updated August 2018



Public service

*We are here to serve the public
with the highest level of
integrity.*

Excellence

*We aspire to achieve exceptional
results*

Teamwork

*We engage others in ways that foster
respect and trust.*

Respect

*We encourage and appreciate
diversity in people and ideas.*

Innovation

*We take pride in coming up with
innovative solutions.*

Sustainability

*We are leaders in demonstrating
resource use and protection.*

Metro's values and purpose

We inspire, engage, teach and invite people to preserve and enhance the quality of life and the environment for current and future generations.

Nondiscrimination Notice to the Public

Metro hereby gives public notice that it is the policy of the Metro Council to assure full compliance with Title VI of the Civil Rights Act of 1964, the Civil Rights Restoration Act of 1987, Executive Order 12898 on Environmental Justice and related statutes and regulations in all programs and activities. Title VI requires that no person in the United States of America shall, on the grounds of race, color, sex, or national origin be excluded from the participation in, be denied the benefits of, or be otherwise subjected to discrimination under any program or activity for which Metro receives federal financial assistance. Any person who believes they have been aggrieved by an unlawful discriminatory practice under Title VI has a right to file a formal complaint with Metro. Any such complaint must be in writing and filed with the Metro's Title VI Coordinator within one hundred eighty (180) days following the date of the alleged discriminatory occurrence. For more information, or to obtain a Title VI Discrimination Complaint Form, see the web site at www.oregonmetro.gov or call 503-797-1536.

What is Metro?

Metro works with communities, businesses and residents in the Portland metropolitan area to chart a wise course for the future while protecting the things we love about this place.

Where is Metro?

Metro serves more than 1.5 million people in Clackamas, Multnomah and Washington counties. The agency's boundary encompasses Portland, Oregon and 23 other cities – from the Columbia River in the north to the bend of the Willamette River near Wilsonville, and from the foothills of the Coast Range near Forest Grove to the banks of the Sandy River at Troutdale.

Who is Metro?

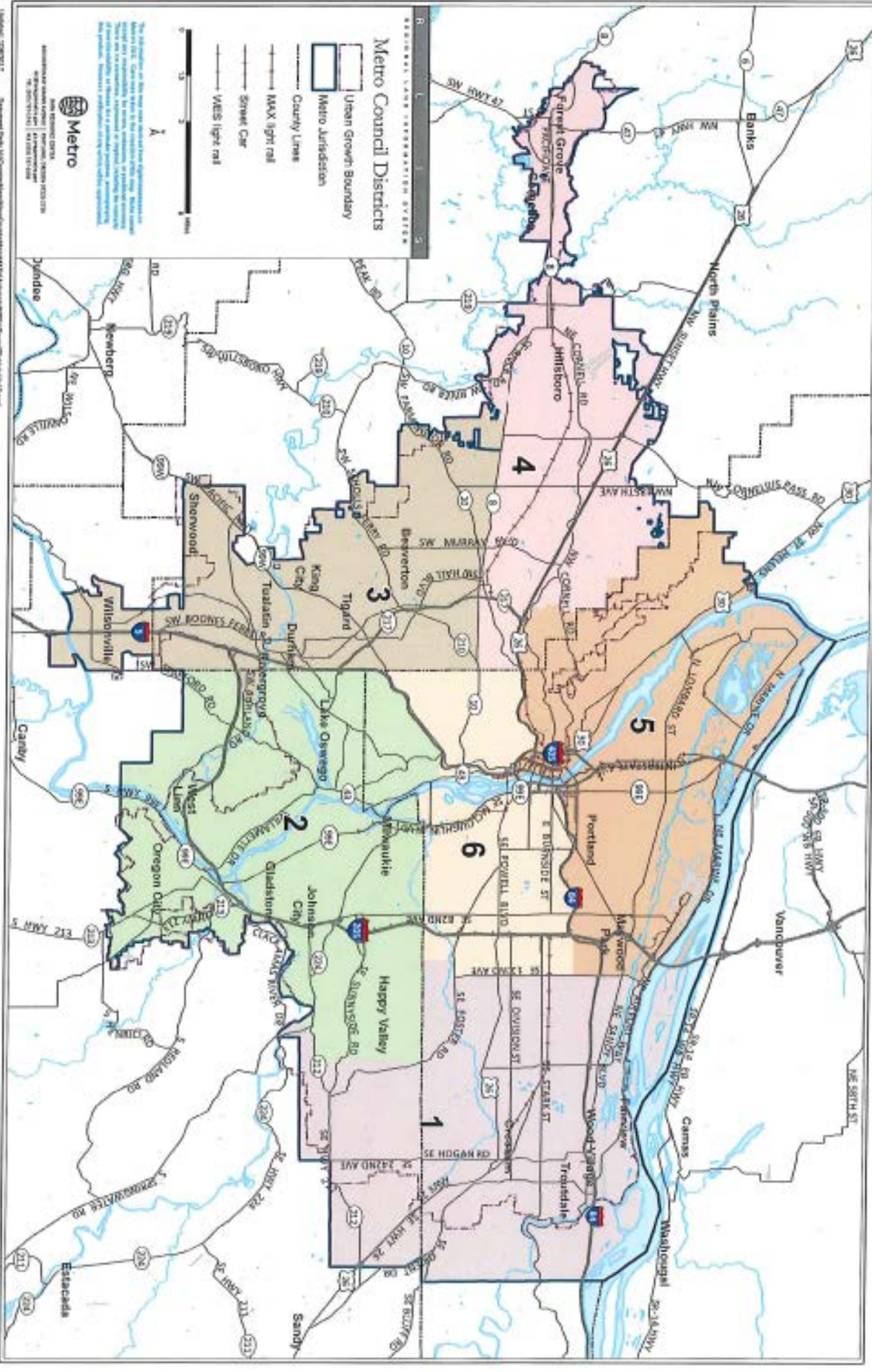
The **Metro Council** consists of a president, elected region wide, and six councilors who are elected by district every four years in nonpartisan races. The **Metro Auditor**, elected region wide, is responsible for oversight of Metro's annual financial statements and for conducting performance audits. The council appoints a chief operating officer to carry out council policies and manage Metro operations. The chief operating officer oversees a diverse **workforce** of more than 1,600 employees including park rangers, economists, teachers, scientists, designers, planners, animal keepers, stagehands and cartographers. Hundreds of **volunteers** lend a hand at Metro's parks, cemeteries, natural areas, offices and visitor venues.

Metro is the Metropolitan Planning Organization (MPO) for the Portland region

Metro is authorized by Congress and the State of Oregon to coordinate and plan investments in the transportation system for the three-county metropolitan planning area. Metro uses this authority to expand transportation options, make the most of existing streets and improve public transit service.

As an MPO, Metro **works collaboratively** with cities, counties and transportation agencies to decide how to invest federal highway and public transit funds within its service area. It creates a long-range **transportation plan (RTP)**, a 4 year transportation funding program (**MTIP**), and leads efforts to expand the public transit system and helps make strategic use of a small subset of **transportation funding** that Congress sends directly to MPOs.





Metro Council Districts

- Urban Growth Boundary
- Metro Jurisdiction
- County Lines
- MAX light rail
- Street Car
- VES light rail

Scale:
 0 1 2 Miles
 0 1 2 Kilometers



Metro
 METRO REGIONAL GOVERNMENT
 1000 NE Oregon Street, Suite 1000
 Portland, Oregon 97232
 Phone: 503.281.1000
 Website: metro.net

ABOUT THIS DOCUMENT

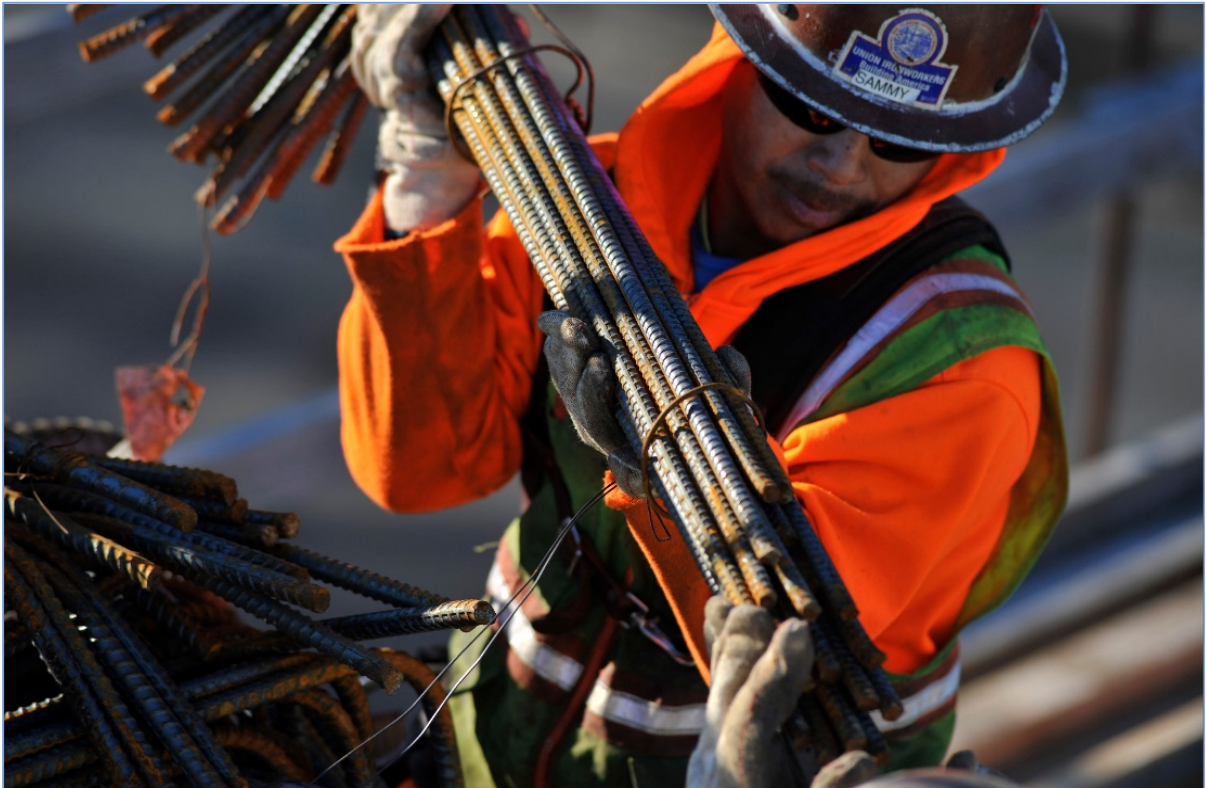
The 2017 Annual Listing of Federally Obligated Projects lists the Metro area programs and projects for which Federal transportation funds have been obligated. The programs and projects listed in this report are located within the Portland metropolitan planning area boundary, representing 24 cities and 3 counties (see map). The obligation lists are organized by lead agency which can be a city, county, state (ODOT), transit authority (TriMet or SMART), Metro or any other agency authorized to receive federal transportation funds.

Table 1 lists the projects obligated through the Federal Highway Administration (FHWA). Table 2 lists projects obligated through The Federal Transit Administration (FTA).

This report provides a yearly update about the progress of projects scheduled for construction or implementation and is useful for understanding the process by which federal investments are made in the communities of this region.

This document is available for downloading on the Metro website at:

www.oregonmetro.gov/mtip.



REGIONAL TRANSPORTATION PLAN (RTP)

The Regional Transportation Plan is a blueprint to guide investments for all forms of travel – motor vehicle, transit, bicycle and walking – and the movement of goods and freight throughout the Portland metropolitan region. The plan identifies current and future transportation needs, investments needed to meet those needs and what funds the region expects to have available over the next 25 years to make those investments a reality. The RTP is the guiding policy document which outlines the long-range vision of the region’s urban transportation system. As a component of the policy document, it identifies priority transportation investments (i.e. projects and programs) which will help achieve the long-range vision. The RTP list represents priorities beyond what can be afforded by the region in any given year. As a result, Metro is required to develop a four-year expenditure plan known as the Metropolitan Transportation Improvement Program (MTIP) for the Portland urban area. For projects to receive federal transportation funding, they must be included in the financially constrained Regional Transportation Plan (RTP).

METROPOLITAN TRANSPORTATION IMPROVEMENT PROGRAM (MTIP)

The Metropolitan Transportation Improvement Program (MTIP) is the federally mandated four year schedule of expenditures (i.e., spending) of federal transportation funds as well as significant state and local funds in the Portland metropolitan region. As a report, the MTIP provides the upcoming four-year implementation schedule of transportation projects in the Portland region. The MTIP also demonstrates how the transportation projects to be implemented comply with federal regulations regarding project eligibility, air quality impacts, environmental justice and public involvement. The MTIP serves as the implementation strategy for the first four years of the region’s long-range transportation plan (RTP). The MTIP coordinates spending of federal and state transportation funds for four different public agencies: Metro, the Oregon Department of Transportation (ODOT), Tri-County Metropolitan Transportation District (TriMet), and South Metro Area Regional Transit (SMART).

Programming in the MTIP is based on a forecast of revenues expected to be available through annual appropriations and apportionments of federal transportation funds. Forecasted revenues are assigned to forecasted costs by project phase, such as design and engineering, right-of-way acquisition, and construction. As funding actually becomes available each federal fiscal year, programming is adjusted for that year based on project readiness, with some projects slipping to future years while others move to the current year. Projects in this report are also in the MTIP.



ABOUT OBLIGATIONS

An obligation in the context of this report is the Federal government's legal commitment to pay the Federal share of a project's cost. An obligated project is one that has been authorized by the Federal agency as meeting eligibility requirements for federal funds.

For Federal Transit Administration (FTA) projects, obligation occurs when the FTA grant is awarded. For Federal Highway Administration (FHWA) projects, obligation occurs by phase when a project agreement is executed and FHWA authorizes the federal funds. A project agreement defines specific project elements that are eligible for funding; how financing will occur; and agency roles, responsibilities and liabilities.

Once funds have been obligated, the project sponsor/lead agency begins incurring eligible project expenses and then requests reimbursement from the eligible grant recipient. The reimbursement request must demonstrate that the recipient incurred the costs consistent with the project agreement and all federal requirements.

Projects for which funds have been obligated are not necessarily initiated or completed in the program year. For obligations on a construction project, typically the project needs to complete a competitive bid process and begin construction if an acceptable bid is received before receiving reimbursement of project costs with federal funds. Alternatively, projects may have obtained permission to proceed to construction using local funds, with the ability to be obligated and reimbursed with federal funds at a later date. Some of those projects in this report may already have been constructed.

The amount of the obligation usually does not equal the total cost of the project. An obligation may be for only one phase of a multi-phased project, and the obligation amount listed does not account for local funding spent on a project.

Occasionally, an agency may request that funds be "de-obligated" from a project. This occurs most frequently when the sponsor agency has completed the phase of a project without using all the obligated funds. It also occurs if the agency has decided not to proceed with that project or if an agency decides to change sources of funding for a project. In the case of changing categories of funds, there may be a report entry showing the obligation of the second funding category to the project. De-obligations are shown on the obligation table in parenthesis ().

Following are the projects in the Portland metropolitan area that were obligated in Federal Fiscal Year 2017 (October 1, 2016 – September 30, 2017).

Frequently used fund types

In the Annual Listing of Federally Obligated Projects table, there are a number of fund types that are listed as acronyms or use initials. Here is a list of frequently used fund types found in the tables.

- STP - Surface Transportation Program
- STBG – Surface Transportation Block Grant
- NHS – National Highway Safety
- CMAQ – Congestion Mitigation Air Quality
- TA/TAP – Transportation Alternatives Program funds

- NHPP – National Highway Performance Program
- HSIP – Highway Safety Improvement Program

For further information on these fund types:

<http://www.fhwa.dot.gov/federalaid/projects.cfm>

Further information

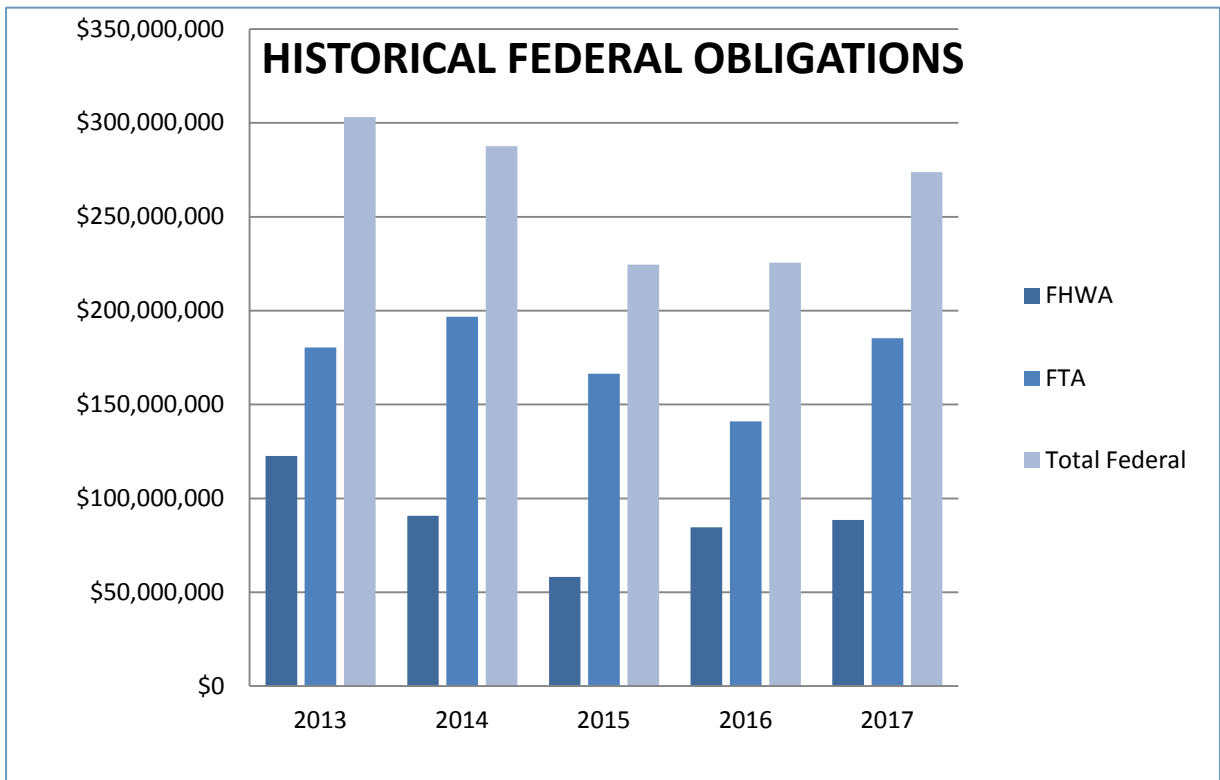
For additional information regarding specific projects contained within this report, please contact the project sponsor.



2017 Obligation Summary

Annual Obligations vs. Historical Obligations

A total of approximately \$273.7 million in federal program funds were obligated in federal fiscal year 2017 which was a \$48 million dollar increase from 2016. The increase was due primarily to higher obligation amounts in two FTA programs - Section 5307 for Bus & Rail Preventive Maintenance and Section 5310 for Elderly and Individuals with Disabilities. The significant decline in 2015 and 2016 was due to multiple factors including an overall decrease in federal revenues available to state DOT's, increased competitiveness for certain federal program revenues at the national level, and changes to the local match requirements.

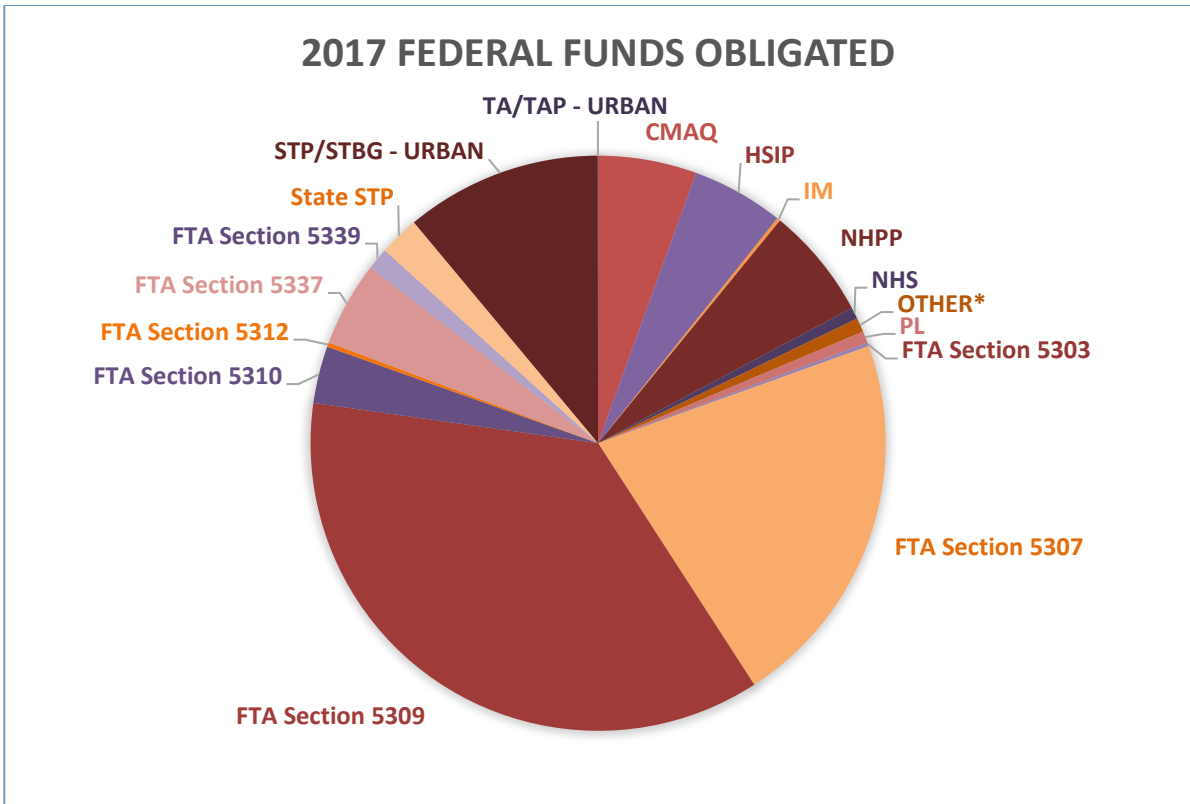


Federal Transportation Funds

A total of approximately \$273.7 million in federal program funds were obligated in federal fiscal year 2017 on 103 projects within the Portland metropolitan region. Funds from the Federal Highway Administration (FHWA) accounted for 32% of the total and approximately \$88.5 million on 88 projects. Funds from the Federal Transit Administration (FTA) accounted for 68% of the total and approximately \$185.2 million on 15 projects. The table and chart below show fund amounts and percentages in more detail.

Obligation of Federal Transportation Funds		
Federal Fund	2017 Funds Obligated	Percent of Total
CMAQ	\$15,229,693	5.56%
HSIP	\$14,215,285	5.19%
IM	(\$520,222)	-0.19%
NHPP	\$17,330,270	6.33%
NHS	\$1,807,104	0.66%
OTHER*	\$2,178,780	0.80%
PL	\$1,801,345	0.66%
FTA Section 5303	\$558,424	0.20%
FTA Section 5307	\$58,687,842	21.44%
FTA Section 5309	\$100,000,000	36.53%
FTA Section 5310	\$8,815,672	3.22%
FTA Section 5312	\$678,000	0.25%
FTA Section 5337	\$13,104,034	4.79%
FTA Section 5339	\$3,405,750	1.24%
STATE - STP/STBG	\$6,151,921	2.25%
STP/STBG - URBAN	\$30,351,893	11.09%
TATAP - URBAN	(\$60,510)	-0.02%
Total	\$273,735,281	100.00%

**Other funds include: Equity Bonus, TIFIA, Section 164 Penalties, Donor State Bonus, Value Pricing Pilot, TOD Pilot Program, Minimum Guarantee, STP Enhancement, Bridge Program and Redistribution funds*



Regional Flexible Funds

Metro allocates the local federal highway program funds, referred to as the Regional Flexible Fund Allocation (RFFA). The urban federal program funds include Surface Transportation Block Grant Program (STBG), formerly Surface Transportation Program (STP), Congestion Mitigation and Air Quality Program (CMAQ) and Transportation Alternatives Program (TA, formerly TAP). A total of approximately \$45.5 million in regional flexible funds were obligated in federal fiscal year 2017 on 51 projects within the Portland metropolitan region. Funds from the STP/STBG Program accounted for 67%. Funds from the CMAQ Program accounted for 33% and .13% were TAP Program funds. The table and chart below show fund amounts and percentages in more detail.

Metro MTIP Report & FMIS Report						
Federal Fund (RFFA Source)	2017 Limitation	Prior Year Carryover	Total Funds Available	2017 Programming	2017 Obligations	Obligation % (Obs/Avail)
CMAQ	\$12,849,056	\$13,860,757	\$26,709,813	\$16,063,601	\$15,229,693	57.02%
STP/STBG - URBAN	\$25,854,674	\$34,375,802	\$60,230,476	\$24,175,335	\$30,351,893	50.39%
TA/TAP - URBAN	\$1,346,906	\$982,003	\$2,328,909	\$207,191	(\$60,510)	-2.60%
Total	\$40,050,636	\$49,218,562	\$89,269,198	\$40,446,127	\$45,521,076	50.99%

Note: 2017 Limitation and Prior Year Carryover from the ODOT Financial Plan Report as of 9/30/17 are not audited.

Note: The annual obligations can exceed programming when carry-over funds and funding adjustments are applied.

Note: Programming totals from FY15-18 MTIP Report of 9/30/17

Note: Obligations from 2017 FMIS Obligation Report of 12/20/17

FFY17 FHWA Obligations

Lead Agency	Project Number	ODOT Key Number	Project Title	Project Phase	Fund Code	Fund Code Description	FFY17 Obligation Amount	Federal Amount Programmed	Total Project Cost Estimate
Beaverton	0535039	14400	SW Rose Biggi: Hall Blvd - Crescent St (Beaverton) Washington County	Construction	L23E	STP- URBANIZED AREAS S-LU EXT	\$168,303	\$1,713,930	\$4,918,360
Beaverton	0535039	14400	SW Rose Biggi: Hall Blvd - Crescent St (Beaverton) Washington County	Construction	L23E	STP- URBANIZED AREAS S-LU EXT	(\$168,263)	\$1,713,930	\$4,918,360
Beaverton	0535039	14400	SW Rose Biggi: Hall Blvd - Crescent St (Beaverton) Washington County	Construction	M24E	SURFACE TRANS FLEX- MAP-21 EXT	(\$130,222)	\$1,713,930	\$4,918,360
Clackamas County	C005103	19276	Jennings Ave: OR99E To Oatfield Rd	Preliminary Engineering	Z230	STBG-URBANIZED >200K FAST	\$583,245	\$583,245	\$4,040,213
Clackamas County	C005081	17881	SE 122nd Ave & 132nd Ave: Sidewalk Connections	Preliminary Engineering	Z301	TRANS ALTERNATIVES >200K FAST	\$25,340	\$200,239	\$1,095,878
Clackamas County	C005081	17881	SE 122nd Ave & 132nd Ave: Sidewalk Connections	Preliminary Engineering	Z230	STBG-URBANIZED >200K FAST	\$30,368	\$200,239	\$1,095,878
Clackamas County	C005101	17881	SE 122nd Ave & 132nd Ave: Sidewalk Connections	Construction	Z301	TRANS ALTERNATIVES >200K FAST	\$818	\$533,709	\$1,095,878
Clackamas County	C005101	17881	SE 122nd Ave & 132nd Ave: Sidewalk Connections	Construction	L22E	STP- ENHANCEMENT S-LU EXT	(\$818)	\$533,709	\$1,095,878
Clackamas County	C005096	17881	SE 122nd Ave & 132nd Ave: Sidewalk Connections	Right of Way	M301	TAP -URBANIZED AREAS POP >200K	(\$71,736)	\$233,298	\$1,095,878
Clackamas County	C005093	18305	Sunnyside Rd Adaptive Signal System Local Design Adaptive Signal System & Transit Signal Priority Clackamas	Preliminary Engineering	Z230	STBG-URBANIZED >200K FAST	\$61,506	\$227,507	\$1,392,098
Clackamas County	C005098	18305	Sunnyside Rd Adaptive Signal System	Construction	Z230	STBG-URBANIZED >200K FAST	\$125,132	\$1,021,623	\$1,392,098
Clackamas County	C005098	18305	Sunnyside Rd Adaptive Signal System	Construction	Z230	STBG-URBANIZED >200K FAST	\$892,649	\$1,021,623	\$1,392,098
Clackamas County	C005105	19278	Trolley Trail Bridge: Gladstone To Oregon City	Planning	Z230	STBG-URBANIZED >200K FAST	\$201,892	\$201,892	\$225,000
DEQ	0000213	17274	School Bus Diesel Engine Emission Reduction / Purchase & Installation Of Exhaust Control Devices On School Buses / Portland Area	Other	Z400	CONGESTION MITIGATION FAST	\$340,974	\$340,974	\$380,000
Forest Grove	2620006	16063	B Street 23rd Ave - Primrose Ln (Forest Grove) Local Install Sidewalks Washington	Preliminary Engineering	LU2E	SAFE ROUTES TO SCHOOL S-LU EXT	\$5,758	\$121,438	\$470,198
Forest Grove	2620010	16063	B Street 23rd Ave - Primrose Ln (Forest Grove) Local Install Sidewalks Washington	Construction	M300	TRANSP ALTERNATIVES PROG FLEX	\$2,863	\$293,665	\$470,198
Forest Grove	2620010	16063	B Street 23rd Ave - Primrose Ln (Forest Grove) Local Install Sidewalks Washington	Construction	M300	TRANSP ALTERNATIVES	\$18,807	\$293,665	\$470,198

FFY17 FHWA Obligations

Lead Agency	Project Number	ODOT Key Number	Project Title	Project Phase	Fund Code	Fund Code Description	FFY17 Obligation Amount	Federal Amount Programmed	Total Project Cost Estimate
						PROG FLEX			
Forest Grove	2620007	17272	Council Creek Trail: Banks - Hillsboro / Planning Project To Produce Train Master Plan / Washington County	Planning	L23E	STP- URBANIZED AREAS S-LU EXT	(\$6,706)	\$218,444	\$243,446
Forest Grove	2620009	18003	OR8 @ Quince St (Forest Grove) Local Improvements Turn Lanes & Pedestrian Crossing Washington	Other	M23E	STP-URBANIZED >200K MAP-21 EXT	\$89,730	\$381,104	\$4,171,382
Forest Grove	2620009	18003	OR8 @ Quince St (Forest Grove) Local Improvements Turn Lanes & Pedestrian Crossing Washington	Right of Way	M23E	STP-URBANIZED >200K MAP-21 EXT	(\$89,730)	\$762,705	\$4,171,382
Gresham	3125052	18306	East Metro Connections ITS Local Signal Hardware & Communications; Install Changeable Message Sign Multnomah	Preliminary Engineering	Z400	CONGESTION MITIGATION FAST	\$179,460	\$179,460	\$1,075,001
Gresham	3125052	18306	East Metro Connections ITS Local Signal Hardware & Communications; Install Changeable Message Sign Multnomah	Other	Z400	CONGESTION MITIGATION FAST	\$67,298	\$67,297	\$1,075,001
Gresham	3125042	14393	NE Cleveland Ave: Stark St - Powell Blvd (Gresham) Bike/Ped	Construction	Z230	STBG-URBANIZED >200K FAST	\$268,951	\$563,014	\$1,885,000
Gresham	3125042	14393	NE Cleveland Ave: Stark St - Powell Blvd (Gresham) Bike/Ped	Construction	Z230	STBG-URBANIZED >200K FAST	\$293,615	\$563,014	\$1,885,000
Metro	0000257	19902	Economic Value Atlas Planning Study (UPWP) - IGA 30681	Planning	Z230	STBG-URBANIZED >200K FAST	(\$24,327)	\$325,000	\$389,309
Metro	0000262	19843	Livable Streets Policy & Guidebook Update - IGA 31401	Planning	Z230	STBG-URBANIZED >200K FAST	\$250,000	\$250,000	\$278,614
Metro	S000978	19551	Metro Drive Less Connect Outreach Program (2015-17)	Other	M24E	SURFACE TRANS FLEX - MAP-21 EXT	\$47,235	\$525,061	\$538,621
Metro	PR18101	20722	Portland Metro Planning SFY18 (5303) - IGA 31948	Planning	Z77D	METROPOLITAN TRANSPORTATION	\$558,424	\$576,355	\$642,321
Metro	PR18101	19295	Portland Metro Planning SFY18 (Corridor & Systems Planning 2018) - IGA 31948	Planning	Z230	STBG-URBANIZED >200K FAST	\$522,610	\$522,610	\$582,425
Metro	PR18101	20722	Portland Metro Planning SFY18 (STP) - IGA 31948	Planning	Z230	STBG-URBANIZED >200K FAST	\$1,208,233	\$1,208,233	\$1,346,521
Metro	PR18101	20722	Portland Metro Planning SFY18 (PL) - IGA 31948	Planning	Z450	METROPOLITAN PLANNING FAST	\$1,801,345	\$1,801,345	\$2,007,517
Metro	0000210	16812	Willamette Greenway Trail: Chimney Park-Pier Park Br Multnomah County	Construction	L22E	STP- ENHANCEMENT S-LU EXT	(\$47,629)	\$1,055,813	\$1,848,452
Metro	0000210	16812	Willamette Greenway Tr: Chimney Park-Pier Park Br Multnomah County	Construction	L22E	STP- ENHANCEMENT S-	(\$770)	\$1,055,813	\$1,848,452

FFY17 FHWA Obligations

Lead Agency	Project Number	ODOT Key Number	Project Title	Project Phase	Fund Code	Fund Code Description	FFY17 Obligation Amount	Federal Amount Programmed	Total Project Cost Estimate
						LU EXT			
Milwaukie	4865018	18018	17th Ave Trail: SE Ochoco - SE McLoughlin	Construction	L23E	STP- URBANIZED AREAS S-LU EXT	\$179,449	\$2,635,046	\$4,484,563
Milwaukie	4864016	18018	17th Ave Trail: SE Ochoco - SE McLoughlin Local Construct Trail On SE 17th Ave; Link Trolley & Springwater Corridor Trail	Preliminary Engineering	L23E	STP- URBANIZED AREAS S-LU EXT	(\$300,577)	\$1,245,384	\$4,484,563
Milwaukie	4865017	18018	17th Ave Trail: SE Ochoco - SE McLoughlin Local Construct Trails - 17th Ave/Trolley & Springwater Clackamas	Right of Way	L23E	STP- URBANIZED AREAS S-LU EXT	(\$50,998)	\$143,568	\$4,484,563
Multnomah County	C051109	18019	Arata Road: 223rd - 238th (Fairview / Wood Village)	Construction	Z400	CONGESTION MITIGATION FAST	\$2,360,317	\$1,869,000	\$6,757,144
Multnomah County	C051095	16196	Broadway St Willamette R (Broadway) Br Painting Local Paint Trusses On Spans 2, 3 & 7 - Br # 06757 Multnomah	Preliminary Engineering	L1C0	BRIDGE PROGRAM - 85% ON/OFF	(\$984,992)	\$1,507,464	\$10,500,000
Multnomah County	C051094	13156	NE 238th Drive @ Treehill Drive Multnomah County	Construction	LS3E	HWY SAFETY IMP PROG S-LU EXT	\$4,912	\$182,780	\$369,800
Multnomah County	C051094	13156	NE 238th Drive @ Treehill Drive Multnomah County	Construction	LS3E	HWY SAFETY IMP PROG S-LU EXT	(\$11,100)	\$182,780	\$369,800
Multnomah County	S000936	19043	NE 244th Ave Rail Crossing Multnomah County	Construction	MS50	RAIL HWY PROTECT DEV MAP-21	\$62,084	\$0	\$410,000
Multnomah County	S000862	19043	NE 244th Ave Rail Crossing / Install Automatic Gate Signals And Guardrail Around Devices / Multnomah County	Preliminary Engineering	LS40	RAIL HWY CROSSING HAZARD ELIM	(\$126,831)	\$0	\$410,000
Multnomah County	S000936	19043	NE 244th Ave Rail Crossing Multnomah County	Construction	MS50	RAIL HWY PROTECT DEV MAP-21	(\$62,084)	\$0	\$410,000
Multnomah County	C051103	18020	Sandy Blvd: 230th Ave - 238th Dr (Wood Village) Local Correct Substandard Conditions On Sandy Blvd Multnomah	Construction	Z230	STBG-URBANIZED >200K FAST	\$181,412	\$501,297	\$2,467,721
Multnomah County	C051103	18020	Sandy Blvd: 230th Ave - 238th Dr (Wood Village) Local Correct Substandard Conditions On Sandy Blvd Multnomah	Construction	Z230	STBG-URBANIZED >200K FAST	\$319,886	\$501,297	\$2,467,721
Multnomah County	C051102	14438	Stark St Beaver Creek Culvert	Construction	Z230	STBG-URBANIZED >200K FAST	\$313,028	\$811,567	\$1,224,454
Multnomah County	C051102	14438	Stark St Beaver Creek Culvert	Construction	Z230	STBG-URBANIZED >200K FAST	\$498,539	\$811,567	\$1,224,454
ODOT	S000710	15038	2011 ATMS Misc Hardware & Software Upgrades / Various Highways, Odot Region 1	Other	L24E	SURFACE TRANS FLEX S-LU EXT	(\$4,268)	\$448,650	\$500,000

FFY17 FHWA Obligations

Lead Agency	Project Number	ODOT Key Number	Project Title	Project Phase	Fund Code	Fund Code Description	FFY17 Obligation Amount	Federal Amount Programmed	Total Project Cost Estimate
ODOT	S064043	14856	FFO - I-205 @ NE Airport Way Interchange East Portland Highway Multnomah County	Construction	L01E	INTERSTATE MAINT S-LU EXT	(\$477,968)	\$5,383,800	\$10,000,000
ODOT	S064043	14856	FFO - I-205 @ NE Airport Way Interchange East Portland Highway Multnomah County	Construction	M0E1	NATIONAL HWY PERF PROGRAM EXT	(\$88,915)	\$5,383,800	\$10,000,000
ODOT	S064043	14856	FFO - I-205 @ NE Airport Way Interchange East Portland Highway Multnomah County	Construction	L01E	INTERSTATE MAINT S-LU EXT	(\$42,254)	\$5,383,800	\$10,000,000
ODOT	S091062	16142	FFO - OR99W: I-5 NB Ramps Pacific Highway East Multnomah County	Construction	MS30	HIGHWAY SAFETY IMP PROG	\$76,460	\$1,538,386	\$2,414,000
ODOT	S091062	16142	FFO - OR99W: I-5 NB Ramps Pacific Highway East Multnomah County	Construction	MS30	HIGHWAY SAFETY IMP PROG	(\$110,059)	\$1,538,386	\$2,414,000
ODOT	S064054	19070	I-205: I-84 - SE Stark/Washington Street East Portland Design For An Auxiliary Lane Project Multnomah	Preliminary Engineering	Z001	NATIONAL HIGHWAY PERF FAST	(\$498,765)	\$0	\$0
ODOT	S064047	17524	I-205:Columbia Slough & NE Alderwood Rd Brs East Portland Freeway Multnomah County	Construction	L05E	NHS- NATL HIGHWAY SYS S-LU EXT	(\$35,452)	\$989,201	\$1,275,999
ODOT	S064058	20480	I-205 Exit Ramps At SE Division St	Preliminary Engineering	ZS30	HIGHWAY SAFETY IMP PROG FAST	\$104,593	\$950,847	\$950,847
ODOT	S064058	20480	I-205 Exit Ramps At SE Division St	Preliminary Engineering	ZS30	HIGHWAY SAFETY IMP PROG FAST	\$950,847	\$950,847	\$950,847
ODOT	S064052	18804	I-205: Johnson Creek To Glen Jackson Bridge-Pavement Preservation. Single Lift Inlay	Right of Way	M002	NATIONAL HIGHWAY PERF EXEMPT	\$28,662	\$55,332	\$60,000
ODOT	S064053	19204	I-205: Pacific Hwy - Abernathy Bridge East Portland Freeway Pavement Preservation. Single Lift Inlay Clackamas	Construction	Z240	SURFACE TRANSP BLOCK GRFS-FLEX	\$394,310	\$9,826,280	\$11,480,320
ODOT	S064053	19204	I-205: Pacific Hwy - Abernathy Bridge East Portland Freeway Pavement Preservation. Single Lift Inlay Clackamas	Construction	Z001	NATIONAL HIGHWAY PERF FAST	\$595,573	\$9,826,280	\$11,480,320
ODOT	S064053	19204	I-205: Pacific Hwy - Abernathy Bridge East Portland Freeway Pavement Preservation. Single Lift Inlay Clackamas	Construction	Z240	SURFACE TRANSP BLOCK GRFS-FLEX	\$3,584,635	\$9,826,280	\$11,480,320
ODOT	S064053	19204	I-205: Pacific Hwy - Abernathy Bridge East Portland Freeway Pavement Preservation. Single Lift Inlay Clackamas	Construction	Z001	NATIONAL HIGHWAY PERF FAST	\$1,330,501	\$9,826,280	\$11,480,320
ODOT	S064053	19204	I-205: Pacific Hwy - Abernathy Bridge East Portland Freeway Pavement Preservation. Single Lift Inlay Clackamas	Construction	Z001	NATIONAL HIGHWAY PERF FAST	\$4,083,796	\$9,826,280	\$11,480,320
ODOT	S001472	18564	I-5 Bridge Deck Rehab (MP 301.00 To 302.00) Pacific Deck Overlay; Joints; End Panels; Br#	Construction	L1C0	BRIDGE PROGRAM - 85% ON/OFF	\$496,699	\$3,485,492	\$4,345,190

FFY17 FHWA Obligations

Lead Agency	Project Number	ODOT Key Number	Project Title	Project Phase	Fund Code	Fund Code Description	FFY17 Obligation Amount	Federal Amount Programmed	Total Project Cost Estimate
			08583 Multnomah						
ODOT	S001472	18564	I-5 Bridge Deck Rehab (MP 301.00 To 302.00) Pacific Deck Overlay; Joints; End Panels; Br# 08583 Multnomah	Construction	L1C0	BRIDGE PROGRAM - 85% ON/OFF	\$682,167	\$3,485,492	\$4,345,190
ODOT	S001472	18564	I-5 Bridge Deck Rehab (MP 301.00 To 302.00) Pacific Deck Overlay; Joints; End Panels; Br# 08583 Multnomah	Construction	Z002	NATIONAL HWY PERF EXEMPT FAST	\$2,205,904	\$3,485,492	\$4,345,190
ODOT	S000877	18309	I-5/I-205 Bi-State Travel Time Signage Various Highways Multnomah County	Construction	M240	SURFACE TRANS FLEX - MAP-21	(\$24,453)	\$430,237	\$619,480
ODOT	S000877	18309	I-5/I-205 Bi-State Travel Time Signage Various Highways Multnomah County	Construction	M240	SURFACE TRANS FLEX - MAP-21	(\$71,529)	\$430,237	\$619,480
ODOT	S001509	20430	I-5: MP 303.27 To MP 308.63	Preliminary Engineering	ZS30	HIGHWAY SAFETY IMP PROG FAST	\$152,515	\$1,386,500	\$1,386,500
ODOT	S001509	20430	I-5: MP 303.27 To MP 308.63	Preliminary Engineering	ZS30	HIGHWAY SAFETY IMP PROG FAST	\$1,386,500	\$1,386,500	\$1,386,500
ODOT	S001502	18836	I-5: N Tigard Interchange - E Portland Fwy, Interchange	Preliminary Engineering	M03E	REDIST CERTAIN AUTH MAP-21 EXT	\$8,893	\$3,157,867	\$29,730,205
ODOT	S001502	18836	I-5: N Tigard Interchange - E Portland Fwy, Interchange	Preliminary Engineering	L03E	REDISTRIB CERTAIN AUTHORIZE	\$8,973	\$3,157,867	\$29,730,205
ODOT	S001502	18836	I-5: N Tigard Interchange - E Portland Fwy, Interchange	Preliminary Engineering	M0E2	NATIONAL HWY PERF EXEMPT EXTEN	\$9,259	\$3,157,867	\$29,730,205
ODOT	S001502	18836	I-5: N Tigard Interchange - E Portland Fwy, Interchange	Preliminary Engineering	Q760	MIN GUAR-SPECIAL LIM-TEA21	\$12,214	\$3,157,867	\$29,730,205
ODOT	S001502	18836	I-5: N Tigard Interchange - E Portland Fwy, Interchange	Preliminary Engineering	L00E	EXTENSION OF ALLOC PROGRAMS	\$12,608	\$3,157,867	\$29,730,205
ODOT	S001502	18836	I-5: N Tigard Interchange - E Portland Fwy, Interchange	Preliminary Engineering	M002	NATIONAL HIGHWAY PERF EXEMPT	\$20,288	\$3,157,867	\$29,730,205
ODOT	S001502	18836	I-5: N Tigard Interchange - E Portland Fwy, Interchange	Preliminary Engineering	M030	REDISTRIB CERTAIN AUTHORIZE	\$40,280	\$3,157,867	\$29,730,205
ODOT	S001502	18836	I-5: N Tigard Interchange - E Portland Fwy, Interchange	Preliminary Engineering	LZ20	EQUITY BONUS LIMITATION	\$53,730	\$3,157,867	\$29,730,205
ODOT	S001502	18836	I-5: N Tigard Interchange - E Portland Fwy, Interchange	Preliminary Engineering	L05E	NHS- NATL HIGHWAY SYS S-LU EXT	\$182,596	\$3,157,867	\$29,730,205

FFY17 FHWA Obligations

Lead Agency	Project Number	ODOT Key Number	Project Title	Project Phase	Fund Code	Fund Code Description	FFY17 Obligation Amount	Federal Amount Programmed	Total Project Cost Estimate
ODOT	S001502	18836	I-5: N Tigard Interchange - E Portland Fwy, Interchange	Preliminary Engineering	M002	NATIONAL HIGHWAY PERF EXEMPT	\$184,440	\$3,157,867	\$29,730,205
ODOT	S001502	18836	I-5: N Tigard Interchange - E Portland Fwy, Interchange	Preliminary Engineering	LZ2E	EQ BONUS SPEC LIM S-LU EXT	\$202,246	\$3,157,867	\$29,730,205
ODOT	S001502	18836	I-5: N Tigard Interchange - E Portland Fwy, Interchange	Preliminary Engineering	Z030	REDISTRIB CERTAIN AUTH FAST	\$249,561	\$3,157,867	\$29,730,205
ODOT	S001502	18836	I-5: N Tigard Interchange - E Portland Fwy, Interchange	Preliminary Engineering	Z002	NATIONAL HWY PERF EXEMPT FAST	\$715,702	\$3,157,867	\$29,730,205
ODOT	S001502	18836	I-5: N Tigard Interchange - E Portland Fwy, Interchange	Preliminary Engineering	L05E	NHS- NATL HIGHWAY SYS S-LU EXT	\$1,659,960	\$3,157,867	\$29,730,205
ODOT	S001445	18262	I-5: SB Ramp At N Broadway Pacific Realignment Of Ramp Intersection At Broadway Multnomah	Preliminary Engineering	Z240	SURFACE TRANSP BLOCK GRYS-FLEX	\$14,378	\$441,355	\$2,327,546
ODOT	S001445	18262	I-5: SB Ramp At N Broadway Pacific Realignment Of Ramp Intersection At Broadway Multnomah	Preliminary Engineering	Z240	SURFACE TRANSP BLOCK GRYS-FLEX	\$151,350	\$441,355	\$2,327,546
ODOT	S001479	18262	I-5 SB: Broadway-Weidler Exit Ramp (Portland) Pacific Realignment Of Ramp Intersection At Broadway Multnomah	Other	LZ2E	EQ BONUS SPEC LIM S-LU EXT	(\$32,498)	\$41,276	\$2,327,546
ODOT	0000258	17458	ITS Network	Other	Z230	STBG-URBANIZED >200K FAST	\$5,000	\$65,000	\$72,439
ODOT	0000258	17458	ITS Network	Other	Z400	CONGESTION MITIGATION FAST	\$60,000	\$65,000	\$72,439
ODOT	S068010	17707	OR 213 (82nd Ave): Sandy Blvd Cascade Hwy North Improve Intersection: Signal Head, Countdown Ped Signal & Imp Signing	Preliminary Engineering	MS30	HIGHWAY SAFETY IMP PROG	\$7,738	\$273,893	\$1,163,946
ODOT	S068010	17707	OR 213 (82nd Ave): Sandy Blvd Cascade Hwy North Improve Intersection: Signal Head, Countdown Ped Signal & Imp Signing	Preliminary Engineering	LS3E	HWY SAFETY IMP PROG S-LU EXT	\$10,637	\$273,893	\$1,163,946
ODOT	S068023	17707	OR213 (82nd Ave): Sandy Blvd Cascade North Improve Intersection; Adv Signal Head, Countdown Ped Signal Multnomah	Right of Way	M0E2	NATIONAL HWY PERF EXEMPT EXTEN	(\$2,667)	\$101,442	\$1,163,946
ODOT	S174015	19356	OR212: Rock Creek	Preliminary Engineering	Z230	STBG-URBANIZED >200K FAST	\$14,411	\$803,981	\$896,000
ODOT	S174015	19356	OR212: Rock Creek	Preliminary Engineering	Z230	STBG-URBANIZED >200K FAST	\$131,006	\$803,981	\$896,000
ODOT	S174016	19355	OR212: Rock Creek - Richey Rd	Preliminary Engineering	Z002	NATIONAL HWY PERF EXEMPT FAST	\$30,057	\$729,505	\$813,000

FFY17 FHWA Obligations

Lead Agency	Project Number	ODOT Key Number	Project Title	Project Phase	Fund Code	Fund Code Description	FFY17 Obligation Amount	Federal Amount Programmed	Total Project Cost Estimate
ODOT	S174016	19355	OR212: Rock Creek - Richey Rd	Preliminary Engineering	Z002	NATIONAL HWY PERF EXEMPT FAST	\$280,855	\$729,505	\$813,000
ODOT	S068018	16150	OR213: Intersection Improvements, Couch-Division Cascade North Highway Multnomah County	Construction	MS3E	HIGHWAY SAFETY IMP PROG EXTENS	\$37,405	\$4,461,855	\$7,793,669
ODOT	S068018	16150	OR213: Intersection Improvements, Couch-Division Cascade North Highway Multnomah County	Construction	ZS30	HIGHWAY SAFETY IMP PROG FAST	\$57,711	\$4,461,855	\$7,793,669
ODOT	S068018	16150	OR213: Intersection Improvements, Couch-Division Cascade North Highway Multnomah County	Construction	ZS30	HIGHWAY SAFETY IMP PROG FAST	\$524,645	\$4,461,855	\$7,793,669
ODOT	S068018	16150	OR213: Intersection Improvements, Couch-Division Cascade North Highway Multnomah County	Construction	MS3E	HIGHWAY SAFETY IMP PROG EXTENS	(\$37,406)	\$4,461,855	\$7,793,669
ODOT	S068026	16150	OR213: Intersection Improvements, Couch-Division Cascade North Intersection Improvements Multnomah	Other	MS30	HIGHWAY SAFETY IMP PROG	(\$15,642)	\$153,283	\$7,793,669
ODOT	S068030	19141	OR213: King Rd Mt Scott Creek Bridge ADA Ramps	Construction	M0E2	NATIONAL HWY PERF EXEMPT EXTEN	\$34,975	\$538,380	\$1,431,000
ODOT	S068030	19141	OR213: King Rd Mt Scott Creek Bridge ADA Ramps	Construction	M0E2	NATIONAL HWY PERF EXEMPT EXTEN	\$121,608	\$538,380	\$1,431,000
ODOT	S068030	19141	OR213: King Rd Mt Scott Creek Bridge ADA Ramps	Construction	M0E2	NATIONAL HWY PERF EXEMPT EXTEN	\$196,343	\$538,380	\$1,431,000
ODOT	S068021	18779	OR213: SE Lindy St - SE King Rd Cascade North 3R Paving Preservation Project Clackamas	Preliminary Engineering	Z030	REDISTRIB CERTAIN AUTH FAST	\$43,733	\$666,759	\$4,933,339
ODOT	S068021	18779	OR213: SE Lindy St - SE King Rd Cascade North 3R Paving Preservation Project Clackamas	Preliminary Engineering	Z030	REDISTRIB CERTAIN AUTH FAST	\$397,569	\$666,759	\$4,933,339
ODOT	S068021	18779	OR213: SE Lindy St - SE King Rd Cascade North 3R Paving Preservation Project Clackamas	Right of Way	Z240	SURFACE TRANSP BLOCK GRYS-FLEX	\$15,694	\$830,002	\$4,933,339
ODOT	S068021	18779	OR213: SE Lindy St - SE King Rd Cascade North 3R Paving Preservation Project Clackamas	Right of Way	Z240	SURFACE TRANSP BLOCK GRYS-FLEX	\$142,671	\$830,002	\$4,933,339
ODOT	S068021	18779	OR213: SE Lindy St - SE King Rd Cascade North 3R Paving Preservation Project Clackamas	Construction	Z001	NATIONAL HIGHWAY PERF FAST	\$267,069	\$2,018,414	\$4,933,339
ODOT	S068021	18779	OR213: SE Lindy St - SE King Rd Cascade North 3R Paving Preservation Project Clackamas	Construction	Z001	NATIONAL HIGHWAY PERF FAST	\$2,361,393	\$2,018,414	\$4,933,339

FFY17 FHWA Obligations

Lead Agency	Project Number	ODOT Key Number	Project Title	Project Phase	Fund Code	Fund Code Description	FFY17 Obligation Amount	Federal Amount Programmed	Total Project Cost Estimate
ODOT	S144030	19918	OR217/OR224: Bridge Rail Retrofit	Preliminary Engineering	Z001	NATIONAL HIGHWAY PERF FAST	\$32,078	\$291,623	\$1,952,000
ODOT	S144030	19918	OR217/OR224: Bridge Rail Retrofit	Preliminary Engineering	Z001	NATIONAL HIGHWAY PERF FAST	\$291,623	\$291,623	\$1,952,000
ODOT	S171043	19534	OR224: Bridge Deck Overlays Clackamas Deck Overlays, Bridges 09554 & 09719 Clackamas	Preliminary Engineering	L1C0	BRIDGE PROGRAM - 85% ON/OFF	(\$379,865)	\$0	\$0
ODOT	S171043	19534	OR224: Bridge Deck Overlays Clackamas Deck Overlays, Bridges 09554 & 09719 Clackamas	Preliminary Engineering	L1CE	BRIDGE 85% ON/OFF S-LU EXT	(\$2,357)	\$0	\$0
ODOT	S171043	19534	OR224: Bridge Deck Overlays Clackamas Deck Overlays, Bridges 09554 & 09719 Clackamas	Preliminary Engineering	M0E1	NATIONAL HWY PERF PROGRAM EXT	(\$115,521)	\$0	\$0
ODOT	S029027	18758	OR8 Operational Improvements Tualatin Valley Signal Upgrades Washington	Preliminary Engineering	M040	TIFIA REDISTRIBUTION MAP-21	\$86,500	\$1,345,950	\$5,649,997
ODOT	S029027	18758	OR8 Operational Improvements Tualatin Valley Signal Upgrades Washington	Preliminary Engineering	Z230	STBG-URBANIZED >200K FAST	\$1,111,396	\$1,345,950	\$5,649,997
ODOT	S081063	18776	OR99E: SE Harold St - SE Harrison St Pacific Hwy East 3R Pavement Preservation Project Various	Construction	Z001	NATIONAL HIGHWAY PERF FAST	\$439,199	\$8,131,333	\$10,644,965
ODOT	S081063	18776	OR99E: SE Harold St - SE Harrison St Pacific Hwy East 3R Pavement Preservation Project Various	Construction	Z001	NATIONAL HIGHWAY PERF FAST	\$853,879	\$8,131,333	\$10,644,965
ODOT	0000239	18838	OR99W: Corridor Safety & Access To Transit	Preliminary Engineering	Z230	STBG-URBANIZED >200K FAST	\$620,509	\$620,509	\$3,605,000
ODOT	S091069	17701	OR99W: SW Durham Rd - SW Fischer Rd Pacific Hwy West Washington County	Construction	MS30	HIGHWAY SAFETY IMP PROG	(\$60,807)	\$1,420,738	\$2,376,423
ODOT	S091088	21071	OR99W: SW Naito Pkwy - SW Huber St Phase 2	Preliminary Engineering	ZS32	SEC 164 PENALTIES HSIP FAST	\$4,162	\$162,000	\$775,000
ODOT	S091088	21071	OR99W: SW Naito Pkwy - SW Huber St Phase 2	Preliminary Engineering	MS30	HIGHWAY SAFETY IMP PROG	\$13,658	\$162,000	\$775,000
ODOT	S091088	21071	OR99W: SW Naito Pkwy - SW Huber St Phase 2	Preliminary Engineering	ZS32	SEC 164 PENALTIES HSIP FAST	\$37,832	\$162,000	\$775,000
ODOT	S091088	21071	OR99W: SW Naito Pkwy - SW Huber St Phase 2	Preliminary Engineering	MS30	HIGHWAY SAFETY IMP PROG	\$124,168	\$162,000	\$775,000
ODOT	S001512	20484	SW Multnomah Blvd Over I-5	Preliminary Engineering	Z030	REDISTRIB CERTAIN AUTH FAST	\$212,149	\$191,125	\$213,000

FFY17 FHWA Obligations

Lead Agency	Project Number	ODOT Key Number	Project Title	Project Phase	Fund Code	Fund Code Description	FFY17 Obligation Amount	Federal Amount Programmed	Total Project Cost Estimate
ODOT	3410016	18806	US 26: Cornelius Pass Rd - NW 185th Ave Sunset Design For Adding A Travel Lane In Each Direction Washington	Construction	Z001	NATIONAL HIGHWAY PERF FAST	\$582,719	\$16,041,778	\$35,268,470
ODOT	3410016	18806	US 26: Cornelius Pass Rd - NW 185th Ave Sunset Design For Adding A Travel Lane In Each Direction Washington	Construction	Z001	NATIONAL HIGHWAY PERF FAST	\$3,341,936	\$16,041,778	\$35,268,470
ODOT	3410016	18806	US 26: Cornelius Pass Rd - NW 185th Ave Sunset Design For Adding A Travel Lane In Each Direction Washington	Construction	Z230	STBG-URBANIZED >200K FAST	\$8,267,000	\$16,041,778	\$35,268,470
ODOT	S026126	19690	US26 (Powell Blvd): SE 122nd Ave - SE 136th Ave	Right of Way	ZS30	HIGHWAY SAFETY IMP PROG FAST	\$4,300,000	\$0	\$20,000,000
ODOT	S026122	18583	US26: Boring Road Oxing Bridge Repair Mt Hood Increase Vertical Clearance, Deck Overlay; Br#09381 Clackamas	Right of Way	Z231	STBG 5-200K POP FASTG	\$17,767	\$545,558	\$608,000
ODOT	S026122	18583	US26: Boring Road Oxing Bridge Repair Mt Hood Increase Vertical Clearance, Deck Overlay; Br#09381 Clackamas	Right of Way	Z231	STBG 5-200K POP FASTG	\$161,514	\$545,558	\$608,000
ODOT	S047111	15455	US26: Jefferson Rockfall Project Sunset Highway Multnomah County	Construction	M240	SURFACE TRANS FLEX - MAP-21	\$45,888	\$1,256,220	\$1,550,000
ODOT	S047111	15455	US26: Jefferson Rockfall Project Sunset Highway Multnomah County	Construction	M240	SURFACE TRANS FLEX - MAP-21	(\$51,739)	\$1,256,220	\$1,550,000
ODOT	S026117	18795	US26: SE 20th Ave - SE 33rd Ave My Hood Crosswalk Signals, RF Beacons, Striping, Signing & ADA Upgrades Multnomah	Other	ZS32	SEC 164 PENALTIES HSIP FAST	\$53,853	\$48,516	\$4,205,116
ODOT	S026117	18795	US26: SE 20th Ave - SE 33rd Ave My Hood Crosswalk Signals, RF Beacons, Striping, Signing & ADA Upgrades Multnomah	Construction	ZS30	HIGHWAY SAFETY IMP PROG FAST	\$298,237	\$3,191,941	\$4,205,116
ODOT	S026117	18795	US26: SE 20th Ave - SE 33rd Ave My Hood Crosswalk Signals, RF Beacons, Striping, Signing & ADA Upgrades Multnomah	Construction	ZS30	HIGHWAY SAFETY IMP PROG FAST	\$406,949	\$3,191,941	\$4,205,116
ODOT	S026117	18795	US26: SE 20th Ave - SE 33rd Ave My Hood Crosswalk Signals, RF Beacons, Striping, Signing & ADA Upgrades Multnomah	Construction	ZS30	HIGHWAY SAFETY IMP PROG FAST	\$2,302,301	\$3,191,941	\$4,205,116
ODOT	S092061	21128	US30: Corridor (MP 9.08 - 17.68)	Preliminary Engineering	M040	TIFIA REDISTRIBUTION MAP-21	\$19,346	\$175,871	\$196,000
ODOT	S092061	21128	US30: Corridor (MP 9.08 - 17.68)	Preliminary Engineering	M040	TIFIA REDISTRIBUTION MAP-21	\$175,871	\$175,871	\$196,000
ODOT	S092060	20208	US30: Kittridge - St Johns	Preliminary Engineering	Z230	STBG-URBANIZED >200K FAST	\$163,247	\$1,484,060	\$1,653,917

FFY17 FHWA Obligations

Lead Agency	Project Number	ODOT Key Number	Project Title	Project Phase	Fund Code	Fund Code Description	FFY17 Obligation Amount	Federal Amount Programmed	Total Project Cost Estimate
ODOT	S092060	20208	US30: Kittridge - St Johns	Preliminary Engineering	Z230	STBG-URBANIZED >200K FAST	\$1,484,060	\$1,484,060	\$1,653,917
ODOT	S092059	18778	US30: NW McNamee Rd - NW Bridge Ave	Other	M030	REDISTRIB CERTAIN AUTHORIZE	\$27,593	\$107,905	\$6,628,385
ODOT	S092059	18778	US30: NW McNamee Rd - NW Bridge Ave	Other	M002	NATIONAL HIGHWAY PERF EXEMPT	\$28,277	\$107,905	\$6,628,385
ODOT	S123022	20413	US30BY (Lombard) Safety Extension	Preliminary Engineering	ZS30	HIGHWAY SAFETY IMP PROG FAST	\$174,075	\$1,465,305	\$1,582,496
ODOT	S123022	20413	US30BY (Lombard) Safety Extension	Preliminary Engineering	ZS30	HIGHWAY SAFETY IMP PROG FAST	\$1,582,496	\$1,465,305	\$1,582,496
Oregon City	5520030	17265	OR99E:Clackamas River Bridge-Dunes Dr(Oregon City) Pacific Highway East Clackamas County	Construction	M230	STP-URBANIZED >200K MAP-21	\$628,621	\$2,419,863	\$3,807,227
Oregon City	5520030	17265	OR99E:Clackamas River Bridge-Dunes Dr(Oregon City) Pacific Highway East Clackamas County	Construction	M230	STP-URBANIZED >200K MAP-21	(\$628,621)	\$2,419,863	\$3,807,227
Portland	5900249	16771	102nd Ave: NE Glisan St - SE Washington St (Ph 2) Bike/Ped	Construction	L23E	STP- URBANIZED AREAS S-LU EXT	\$247,286	\$1,400,000	\$2,072,885
Portland	5900249	16771	102nd Ave: NE Glisan St - SE Washington St (Ph 2) Multnomah County	Construction	L23E	STP- URBANIZED AREAS S-LU EXT	(\$334,233)	\$1,400,000	\$2,072,885
Portland	5900254	17463	Active Corridor Management (Various City Streets) Local Real-Time Travel Info, Updates Event Timing Plans In I-84 Corridor Mult Co	Preliminary Engineering	L40E	CONGESTION MITIGATION S-LU EXT	(\$23,808)	\$269,351	\$1,522,890
Portland	5900269	18023	Burgard/Lombard @ North Time Oil Road Intersection Local Add Turn Lane, Bike Lanes & Sidewalks Multnomah	Construction	Z230	STBG-URBANIZED >200K FAST	\$218,358	\$1,621,054	\$2,633,456
Portland	5900269	18023	Burgard/Lombard @ North Time Oil Road Intersection Local Add Turn Lane, Bike Lanes & Sidewalks Multnomah	Construction	Z230	STBG-URBANIZED >200K FAST	\$1,404,579	\$1,621,054	\$2,633,456
Portland	5900292	19297	East Portland Access To Employment And Education	Preliminary Engineering	Z230	STBG-URBANIZED >200K FAST	\$1,529,579	\$1,529,579	\$5,869,831
Portland	5900245	13502	MLK O-Xing / Turn Lanes: Columbia To Lombard Local Improve Truck Movements At Or Near MLK Multnomah	Preliminary Engineering	L23E	STP- URBANIZED AREAS S-LU EXT	(\$44,865)	\$1,242,466	\$3,559,260
Portland	5900238	17740	N Going Bike/Ped: N Vancouver Ave-N Channel Ave Multnomah County	Construction	L24E	SURFACE TRANS FLEX S-LU EXT	\$5,204	\$1,206,689	\$2,333,000
Portland	5900238	17740	N Going Bike/Ped: N Vancouver Ave-N Channel Ave Multnomah County	Construction	L24E	SURFACE TRANS FLEX S-LU EXT	(\$132,802)	\$1,206,689	\$2,333,000

FFY17 FHWA Obligations

Lead Agency	Project Number	ODOT Key Number	Project Title	Project Phase	Fund Code	Fund Code Description	FFY17 Obligation Amount	Federal Amount Programmed	Total Project Cost Estimate
Portland	5900238	17740	N Going Bike/Ped: N Vancouver Ave-N Channel Ave Multnomah County	Construction	M240	SURFACE TRANS FLEX - MAP-21	(\$9,679)	\$1,206,689	\$2,333,000
Portland	5900296	19303	N. Going To The Island Freight Project	Preliminary Engineering	Z230	STBG-URBANIZED >200K FAST	\$70,000	\$70,000	\$557,228
Portland	5900296	19303	N. Going To The Island Freight Project	Other	L23E	STP- URBANIZED AREAS S-LU EXT	\$29,999	\$30,000	\$557,228
Portland	5900298	13502	NE Columbia Blvd At MLK Jr Blvd	Other	Z230	STBG-URBANIZED >200K FAST	\$44,865	\$44,865	\$3,559,260
Portland	5900247	17955	Peer-To-Peer Car Sharing Program / City Of Portland Metropolitan Area / Multnomah County	Other	L88E	VALUE PRICING PILOT PROGRAM	(\$114,174)	\$1,725,000	\$2,156,250
Portland	5900267	18025	Portland Bike Sharing Project Multnomah County	Construction	L23E	STP- URBANIZED AREAS S-LU EXT	\$37,929	\$1,845,167	\$4,042,000
Portland	5900267	18025	Portland Bike Sharing Project Multnomah County	Construction	M230	STP-URBANIZED >200K MAP-21	\$149,595	\$1,845,167	\$4,042,000
Portland	5900267	18025	Portland Bike Sharing Project Multnomah County	Construction	M230	STP-URBANIZED >200K MAP-21	(\$149,595)	\$1,845,167	\$4,042,000
Portland	5900241	17268	Red Electric Trail: SW 30th - SW Vermont Local Construct Off-Street Trail & Bike Boulevard With Sidewalks Multnomah	Preliminary Engineering	Z230	STBG-URBANIZED >200K FAST	\$187,231	\$576,644	\$4,006,292
Portland	5900297	19702	Regional Signal System-ConOps & Implementation	Other	Z230	STBG-URBANIZED >200K FAST	\$1,000,000	\$1,000,000	\$1,114,454
Portland	5900271	17888	SE Holgate & Ramona: 122nd - 136th Ave Sdwk (Portland) Local Install Sidewalks Multnomah	Right of Way	M301	TAP -URBANIZED AREAS POP >200K	(\$346)	\$133,433	\$1,578,761
Portland	5900277	17888	SE Holgate & Ramona:122nd-136th Ave Sdwk(Portland) Local Install Sidewalks Multnomah	Other	M301	TAP -URBANIZED AREAS POP >200K	(\$36,255)	\$40,378	\$1,578,761
Portland	5900263	18416	Springwater Trail Gap: SE Umatilla - SE Linn St	Other	L40E	CONGESTION MITIGATION S-LU EXT	\$94,217	\$94,217	\$1,838,582
Portland	5900258	17267	Twenties Bikeway: NE Lombard - SE Harney Drive Local Bicycle Boulevard Improvements Multnomah	Construction	M23E	STP-URBANIZED >200K MAP-21 EXT	\$142,427	\$1,322,346	\$4,099,733
Portland	5900258	17267	Twenties Bikeway: NE Lombard - SE Harney Drive Local Bicycle Boulevard Improvements Multnomah	Construction	M23E	STP-URBANIZED >200K MAP-21 EXT	(\$142,427)	\$1,322,346	\$4,099,733
Portland	5900217	16377	US 26 Adaptive Traffic Signal System Multnomah County	Construction	L24E	SURFACE TRANS FLEX S-LU EXT	\$14,153	\$1,143,768	\$1,564,677
Portland	5900217	16377	US 26 Adaptive Traffic Signal System Multnomah County	Construction	L24E	SURFACE TRANS FLEX S-LU EXT	(\$64,890)	\$1,143,768	\$1,564,677

FFY17 FHWA Obligations

Lead Agency	Project Number	ODOT Key Number	Project Title	Project Phase	Fund Code	Fund Code Description	FFY17 Obligation Amount	Federal Amount Programmed	Total Project Cost Estimate
Portland	5900192	14273	Waud Bluff Trail: N Basin Ave-N Willamette Blvd Multnomah County	Construction	L22E	STP- ENHANCEMENT S-LU EXT	\$109,056	\$768,194	\$1,317,463
Portland	5900192	14273	Waud Bluff Trail: N Basin Ave-N Willamette Blvd Multnomah County	Construction	L22E	STP- ENHANCEMENT S-LU EXT	(\$116,733)	\$768,194	\$1,317,463
Portland State Univ	S000689	14546	Freight Data Collection Infrastructure And Archive / Collect And Archive Truck Count Data / Portland Metro Area	Other	L23E	STP- URBANIZED AREAS S-LU EXT	(\$20)	\$179,000	\$199,487
Portland State Univ	0000235	18318	Portal Archived Data User Services 201 Archiving And Analysis Of Traffic Data	Other	L230	STP- URBANIZED AREAS>200,000	(\$662)	\$125,000	\$139,307
Portland State Univ	0000263	21037	Portal Regional Archive Data User Services - 2017	Other	Z230	STBG-URBANIZED >200K FAST	\$200,000	\$200,000	\$222,891
Tigard	7365014	19327	Fanno Crk Trail: Woodard Pk-Bonita Rd/85th Ave	Preliminary Engineering	Z400	CONGESTION MITIGATION FAST	\$1,151,236	\$1,151,424	\$4,905,187
TriMet	0000224	18391	Invest Implementation Project / Implement Invest Sustainability Self-Evaluation Tool / Portland Metro Area	Planning	4L3E	ST-ENVIRON COOP PROGRAM	(\$29,624)	\$36,400	\$72,800
Washington County	C067098	17414	Fanno Creek (Oleson Road) Bridge Local Bridge Replacement (Br671201) & Project Development For Road Realignment Washington	Right of Way	L23E	STP- URBANIZED AREAS S-LU EXT	(\$45,868)	\$1,089,730	\$5,781,573
Washington County	S144026	18841	OR217:OR10 – 99W SB Auxiliary Lane	Preliminary Engineering	ZS30	HIGHWAY SAFETY IMP PROG FAST	\$1,934,451	\$2,692,705	\$3,302,832
Wilsonville	8280010	14058	Barber St: Coffee Lake Loop-Kinsman (Wilsonville) Clackamas County	Construction	LY10	HIGH PRIORITY PROJ SEC 1702	\$167,088	\$2,003,758	\$8,830,873
Wilsonville	8280010	14058	Barber St: Coffee Lake Loop-Kinsman(Wilsonville) Clackamas County	Construction	LY10	HIGH PRIORITY PROJ SEC 1702	(\$167,088)	\$2,003,758	\$8,830,873
						TOTAL FHWA Obligations	\$66,459,859		

ODOT Key No.	Project Name	FTA/FHWA Fund Code	FFY17 Obligation Amount	Federal Amount Programmed	Total Project Cost Estimate
See UPWP	TOD Pilot (Disc)-Southwest Corridor Equitable Development Strategy	20005bMAP21	\$895,000	\$0	\$1,118,751
19558	TriMet - 5310 E&D Capital STP Tsfr (2015-17)	49 USC 5310 - Elderly and Individuals with Disabilities (FHWA xfer)	\$536,770	\$2,284,757	\$2,546,258
19551	Metro - Drive Less Connect Outreach Program (15-17)	FHWA Transfer - State STBG Funds (Z240)	\$207,061	\$207,061	\$538,621
21105	Ride Connection - 5310 E&D Transit Capital STP Tsfr (2017-19)	49 USC 5310 - Elderly and Individuals with Disabilities (FHWA xfer)	\$3,244,611	\$3,244,611	\$3,615,971
21106	TriMet - 5310 E&D Capital STP Tsfr (2017-19)	49 USC 5310 - Elderly and Individuals with Disabilities (FHWA xfer)	\$3,201,779	\$3,201,779	\$3,568,237
20665	Open Trip Planner Project (5312)	49 USC 5312 - Public Transportation Innovation	\$678,000	\$678,000	\$1,002,000
19710	North Hillsboro Job Connector Shuttle (2016)	49 USC 5307 - Urbanized Area Formula	\$175,000	\$350,000	\$700,000
19711	North Hillsboro Job Connector Shuttle (2017)	49 USC 5307 - Urbanized Area Formula	\$175,000	\$175,000	\$350,000
19332	FY16 Bus & Rail Preventive Maintenance (5307)	49 USC 5307 - Urbanized Area Formula	\$33,978,801	\$37,844,293	\$47,305,366
19333	FY17 Bus & Rail Preventive Maintenance (5307)	49 USC 5307 - Urbanized Area Formula	\$24,359,041	\$38,870,812	\$48,588,515
19339	FY16 Bus & Rail Preventive Maintenance (5337)	49 USC 5337 - State of Good Repair	\$12,917	\$18,510,000	\$52,337,500
19912	TriMet Mass Transit Program (15-17) STP	FHWA Transfer - STBG Urbanized Area Funds (Z230)	\$2,018,924	\$2,018,924	\$2,249,999
19285	TriMet Preventive Maintenance (TOD) 2017 (Urban STP)	FHWA Transfer - STBG Urbanized Area Funds (Z230)	\$3,063,139	\$3,063,139	\$3,413,729
19352	2017 Regional Rail Debt Service Bond (CMAQ)	FHWA Transfer - CMAQ Funds (Z400)	\$11,000,000	\$11,000,000	\$12,258,999
19352	2017 Regional Rail Debt Service Bond (STP)	FHWA Transfer - STBG Urbanized Area Funds (Z230)	\$5,000,000	\$5,000,000	\$5,572,272
19340	FY17 Bus & Rail Preventive Maintenance	49 USC 5337 - State of Good Repair	\$13,091,117	\$21,069,068	\$55,536,335
18021	East Portland Active Transportation (Gateway Bike & Ride) STP	FHWA Transfer - STBG Urbanized Area Funds (Z230)	\$400,000	\$400,000	\$4,635,771
19349	Portland to Milwaukie Light Rail (FY17)	49 USC 5309 - Fixed Guideway Modernization	\$100,000,000	\$100,000,000	\$1,490,350,173
20578	Low or No Emission Bus Program (FY16)	49 USC 5339 - Alternatives Analysis Program	\$3,405,750	\$3,405,750	\$7,265,000
19345	2016 TriMet Enhance Mobility Program (5310)	49 USC 5310 - Elderly and Individuals with Disabilities	\$1,159,376	\$2,000,000	\$2,500,000
19346	2017 TriMet Enhance Mobility Program (5310)	49 USC 5310 - Elderly and Individuals with Disabilities	\$673,136	\$2,048,863	\$2,561,079
		Total FTA Awards	\$207,275,422		

LIST OF ACRONYMS

3R – Resurfacing, Restoration and Rehabilitation project
ADA – Americans with Disabilities Act
BY – Bypass
CMAQ – Congestion Mitigation Air Quality (fund)
E&D – Elderly and Individuals with Disabilities
EQ/EQ Bonus – Equity Bonus (fund)
FAST/FAST Act - Fixing America's Surface Transportation Act (authorization bill for 2016-2020)
FFO – Full Federal Oversight (Oregon Department of Transportation project designation)
FHWA – Federal Highway Administration
FTA – Federal Transit Administration
FY/FFY – Federal Fiscal Year (October 1 thru September 30)
HSIP – Highway Safety Improvement Program (fund)
IGA – Intergovernmental Agreement
IM – Interstate Maintenance
ITS – Intelligent Transportation System
MAP-21 – Moving Ahead for Progress in the 21st Century (authorization bill for 2012-2015)
MTIP – Metropolitan Transportation Improvement Program
MP – Mile Point
NB – North Bound
NHFP – National Highway Freight Program (fund)
NHPP – National Highway Performance Program (fund)
NHS – National Highway System (fund)
ODOT – Oregon Department of Transportation
PL – Metropolitan Planning (fund)
PRD – Parks and Recreation District
RF – Rapid Flashing
RTO – Regional Travel Options (regional program)
RTP – Regional Transportation Plan (long-range plan)
SB – South Bound
SFY – State Fiscal Year (July 1 thru June 30)
S-LU/SAFETEA-LU - Safe, Accountable, Flexible, Efficient Transportation Equity Act: A Legacy for Users (authorization bill for 2005-2009 with extensions thru 2011)
SMART – South Metro Area Regional Transit
STBG – Surface Transportation Block Grant (fund)
STP – Surface Transportation Program (fund)
TA/TAP – Transportation Alternatives Program (fund)
TIFIA - Transportation Infrastructure Finance and Innovation Act (finance program for projects of regional and national significance)
TIGER - Transportation Investment Generating Economic Recovery (discretionary grant program)
TOD – Transit Oriented Development (regional program)
TRIMET – Tri-County Metropolitan Transportation District
TSMO – Transportation System Management & Operations
UPWP – Unified Planning Work Program

If you picnic at Blue Lake or take your kids to the Oregon Zoo, enjoy symphonies at the Schnitz or auto shows at the convention center, put out your trash or drive your car – we’ve already crossed paths.

So, hello. We’re Metro – nice to meet you.

In a metropolitan area as big as Portland, we can do a lot of things better together. Join us to help the region prepare for a happy, healthy future.

Stay in touch with news, stories and things to do.

oregonmetro.gov/news

Follow oregonmetro



Metro Council President

Tom Hughes

Metro Councilors

Shirley Craddick, District 1

Carlotta Collette, District 2

Craig Dirksen, District 3

Kathryn Harrington, District 4

Sam Chase, District 5

Bob Stacey, District 6

Auditor

Brian Evans

600 NE Grand Ave.
Portland, OR 97232-2736
503-797-1700