



600 NE Grand Ave.
Portland, OR 97232-2736

Council work session agenda

Tuesday, June 18, 2019

2:00 PM

Metro Regional Center, Council Chamber

2:00 Call to Order and Roll Call

2:05 Safety Briefing

Work Session Topics:

2:10 Measuring the Region's Performance: Regional Barometer [18-5233](#)

Presenter(s): Andrew Scott, Metro
Cary Stacey, Metro

Attachments: [Staff Report](#)
[Regional Barometer Overview](#)
[Regional Barometer Phase 1 Measures](#)
[Regional Barometer Phase 2 Measures](#)

2:40 Regional Investment Strategy Update [18-5239](#)

Presenter(s): Andy Shaw, Metro

3:10 Legislative Update

3:25 Chief Operating Officer Communication

4:30 Councilor Communication

4:35 Adjourn

EXECUTIVE SESSION ORS 192.660 (2)(e): TO CONDUCT DELIBERATIONS WITH PERSONS DESIGNATED BY THE GOVERNING BODY TO NEGOTIATE REAL PROPERTY TRANSACTIONS.

Metro respects civil rights

Metro fully complies with Title VI of the Civil Rights Act of 1964 and related statutes that ban discrimination. If any person believes they have been discriminated against regarding the receipt of benefits or services because of race, color, national origin, sex, age or disability, they have the right to file a complaint with Metro. For information on Metro’s civil rights program, or to obtain a discrimination complaint form, visit www.oregonmetro.gov/civilrights or call 503-797-1536. Metro provides services or accommodations upon request to persons with disabilities and people who need an interpreter at public meetings. If you need a sign language interpreter, communication aid or language assistance, call 503-797-1700 or TDD/TTY 503-797-1804 (8 a.m. to 5 p.m. weekdays) 5 business days before the meeting. All Metro meetings are wheelchair accessible. For up-to-date public transportation information, visit TriMet’s website at www.trimet.org.

Thông báo về sự Metro không kỳ thị của

Metro tôn trọng dân quyền. Muốn biết thêm thông tin về chương trình dân quyền của Metro, hoặc muốn lấy đơn khiếu nại về sự kỳ thị, xin xem trong www.oregonmetro.gov/civilrights. Nếu quý vị cần thông dịch viên ra dấu bằng tay, trợ giúp về tiếp xúc hay ngôn ngữ, xin gọi số 503-797-1700 (từ 8 giờ sáng đến 5 giờ chiều vào những ngày thường) trước buổi họp 5 ngày làm việc.

Повідомлення Metro про заборону дискримінації

Metro з повагою ставиться до громадянських прав. Для отримання інформації про програму Metro із захисту громадянських прав або форми скарги про дискримінацію відвідайте сайт www.oregonmetro.gov/civilrights. або Якщо вам потрібен перекладач на зборах, для задоволення вашого запиту зателефонуйте за номером 503-797-1700 з 8.00 до 17.00 у робочі дні за п'ять робочих днів до зборів.

Metro 的不歧視公告

尊重民權。欲瞭解Metro民權計畫的詳情，或獲取歧視投訴表，請瀏覽網站 www.oregonmetro.gov/civilrights。如果您需要口譯方可參加公共會議，請在會議召開前5個營業日撥打503-797-1700（工作日上午8點至下午5點），以便我們滿足您的要求。

Ogeysiiska takooris la'aanta ee Metro

Metro waxay ixtiraamtaa xuquuqda madaniga. Si aad u heshid macluumaad ku saabsan barnaamijka xuquuqda madaniga ee Metro, ama aad u heshid warqadda ka cabashada takoorista, booqo www.oregonmetro.gov/civilrights. Haddii aad u baahan tahay turjubaan si aad uga qaybqaadatid kullanka dadweynaha, wac 503-797-1700 (8 gallinka hore illaa 5 gallinka dambe maalmaha shaqada) shan maalmo shaqo ka hor kullanka si loo tixgaliyo codsashadaada.

Metro의 차별 금지 관련 통지서

Metro의 시민권 프로그램에 대한 정보 또는 차별 항의서 양식을 얻으려면, 또는 차별에 대한 불만을 신고 할 수 www.oregonmetro.gov/civilrights. 당신의 언어 지원이 필요한 경우, 회의에 앞서 5 영업일 (오후 5시 주중에 오전 8시) 503-797-1700를 호출합니다.

Metroの差別禁止通知

Metroでは公民権を尊重しています。Metroの公民権プログラムに関する情報について、または差別苦情フォームを入手するには、www.oregonmetro.gov/civilrights。までお電話ください。公開会議で言語通訳を必要とされる方は、Metroがご要請に対応できるよう、公開会議の5営業日前までに503-797-1700（平日午前8時～午後5時）までお電話ください。

សេចក្តីជូនដំណឹងអំពីការមិនរើសអើងរបស់ Metro

ការគោរពសិទ្ធិពលរដ្ឋរបស់ ។ សំរាប់ព័ត៌មានអំពីកម្មវិធីសិទ្ធិពលរដ្ឋរបស់ Metro ឬស្នើសុំទទួលបានកម្មប្រព័ន្ធរើសអើងសូមចុះលេខស្នើសុំនៅទី www.oregonmetro.gov/civilrights។ បើលោកអ្នកត្រូវការអ្នកបកប្រែភាសានៅពេលអង្គប្រជុំសាធារណៈ សូមទូរស័ព្ទមកលេខ 503-797-1700 (ម៉ោង 8 ព្រឹកដល់ម៉ោង 5 ល្ងាច ថ្ងៃធ្វើការ) ប្រាំពីរថ្ងៃ ថ្ងៃធ្វើការ មុនថ្ងៃប្រជុំស្នើសុំអាចឲ្យគេសម្រួលតាមសំណើរបស់លោកអ្នក ។

إشعار بعدم التمييز من Metro

تحتزم Metro الحقوق المدنية. للمزيد من المعلومات حول برنامج Metro للحقوق المدنية أو لإيداع شكوى ضد التمييز، يُرجى زيارة الموقع الإلكتروني www.oregonmetro.gov/civilrights. إن كنت بحاجة إلى مساعدة في اللغة، يجب عليك الاتصال مقدماً برقم الهاتف 503-797-1700 (من الساعة 8 صباحاً حتى الساعة 5 مساءً، أيام الاثنين إلى الجمعة) قبل خمسة (5) أيام عمل من موعد الاجتماع.

Paunawa ng Metro sa kawalan ng diskriminasyon

Iginagalang ng Metro ang mga karapatang sibil. Para sa impormasyon tungkol sa programa ng Metro sa mga karapatang sibil, o upang makakuha ng porma ng reklamo sa diskriminasyon, bisitahin ang www.oregonmetro.gov/civilrights. Kung kailangan ninyo ng interpreter ng wika sa isang pampublikong pulong, tumawag sa 503-797-1700 (8 a.m. hanggang 5 p.m. Lunes hanggang Biyernes) lima araw ng trabaho bago ang pulong upang mapagbigyan ang inyong kahilingan.

Notificación de no discriminación de Metro

Metro respeta los derechos civiles. Para obtener información sobre el programa de derechos civiles de Metro o para obtener un formulario de reclamo por discriminación, ingrese a www.oregonmetro.gov/civilrights. Si necesita asistencia con el idioma, llame al 503-797-1700 (de 8:00 a. m. a 5:00 p. m. los días de semana) 5 días laborales antes de la asamblea.

Уведомление о недопущении дискриминации от Metro

Metro уважает гражданские права. Узнать о программе Metro по соблюдению гражданских прав и получить форму жалобы о дискриминации можно на веб-сайте www.oregonmetro.gov/civilrights. Если вам нужен переводчик на общественном собрании, оставьте свой запрос, позвонив по номеру 503-797-1700 в рабочие дни с 8:00 до 17:00 и за пять рабочих дней до даты собрания.

Avizul Metro privind nediscriminarea

Metro respectă drepturile civile. Pentru informații cu privire la programul Metro pentru drepturi civile sau pentru a obține un formular de reclamație împotriva discriminării, vizitați www.oregonmetro.gov/civilrights. Dacă aveți nevoie de un interpret de limbă la o ședință publică, sunați la 503-797-1700 (între orele 8 și 5, în timpul zilelor lucrătoare) cu cinci zile lucrătoare înainte de ședință, pentru a putea să vă răspunde în mod favorabil la cerere.

Metro txoj kev ntxub ntxaug daim ntawv ceeb toom

Metro tributes cai. Rau cov lus qhia txog Metro txoj cai kev pab, los yog kom sau ib daim ntawv tsis txaus siab, mus saib www.oregonmetro.gov/civilrights. Yog hais tias koj xav tau lus kev pab, hu rau 503-797-1700 (8 teev saww ntxov txog 5 teev tsaus ntuj weekdays) 5 hnub ua hauj lwm ua ntej ntxawm lub rooj sib tham.

**Measuring the Region's Performance: Regional
Barometer**
Work Session Topics

Metro Council Work Session
Tuesday, June 18, 2019
Metro Regional Center, Council Chamber

MEASURING THE REGION'S PERFORMANCE: REGIONAL BAROMETER

Date: 6/3/2019

Department: Office of COO

Meeting Date: June 18, 2019

Presenter(s) (if applicable): DCOO

Andrew Scott, Cary Stacey, Reed

Broderson, Robb Kirkman

Length: 30 mins

Prepared by: Cary Stacey; 503-797-1619;

cary.stacey@oregonmetro.gov

ISSUE STATEMENT

The Regional Barometer will measure and visualize data related to the Metro Council's regional desired outcomes using an interactive web tool available to staff, Metro decision-makers and the public. This project is a Council priority.

ACTION REQUESTED

The first phase of this project is underway, having launched in Fall 2018; this phase is scheduled to conclude in December 2019.

The purpose of coming to work session is to give a status report on project progress, give a demonstration of the site and request Metro Council guidance in identifying data consistent with Council priorities, finalizing the design of the tool and informing the proposed next phase of work.

IDENTIFIED POLICY OUTCOMES, POLICY QUESTION(S), POLICY OPTIONS FOR COUNCIL TO CONSIDER

- Among the draft measures, what proposed or additional data would be consistent with Council priorities?
- In designing the next phase of the project (additional measures, target setting, benchmarking and developing meta-indicators, e.g. weighted scores for the regional desired outcomes) what guidance does Council have for project staff?

STAFF RECOMMENDATIONS

N/A

STRATEGIC CONTEXT & FRAMING COUNCIL DISCUSSION

The Regional Barometer will:

- Measure Metro's long term program and policy performance
- Support trust building with communities by increasing transparency of Metro's work, and demonstrating Metro's commitment to keeping ourselves and our jurisdictional partners accountable to our shared regional goals
- Support benchmarking in relation to U.S. and international cities, for many of our regional outcomes, including livability and community vibrancy.

- Guide investments in robust climate, equity and livability data by completing a comprehensive data plan for Metro
- Provide resources to jurisdictions, community organizations and public audiences to assist in data-driven policymaking
- Formalize agreements with jurisdictions and state partners around data sharing

BACKGROUND

- Metro has undertaken two previous efforts to define and measure our six desired outcomes. The first effort, a collaborative project with PSU, ended in the creation of the Greater Portland Pulse. The most recent effort, “MetroPulse,” concluded after councilors responded to a first draft of the project with an expressed need for more granular data to be helpful in supporting policy conversations.
- Metro Council has indicated desire for continued work on this project. This recent effort, continuing where MetroPulse left off, is led by Cary Stacey in the office of the COO; the Research Center is building the web tool.
- This project folds in existing measures and data and broadens Metro’s ability to serve regional data needs through acquisition of new data sets or collection of entirely new data.
- This project, and the suite of measures used, will be iterative, with the intent to engage with communities more broadly in the next phase of development and adapt as communities give input on what Metro’s regional outcomes mean to them.
- Phase 2 of this project, scheduled to launch in 2020, includes target setting, benchmarking and the development of meta-indicators (e.g. providing a weighted score to each of the six outcomes).

ATTACHMENTS

Is legislation required for Council action? No

- What other materials are you presenting today?

Performance management project | Regional Barometer

The Regional Barometer publicly provides performance measures for Metro's Six Desired Outcomes and Metro programs that support those outcomes. It is the external facet of By the Numbers, a web-based tool that displays data relevant to Metro operations and the Six Desired Outcomes.

Project purpose

Improve Metro decision-making through accountability, transparency, and results.

The Regional Barometer will:

- **Promote accountability and transparency**, not only for Metro and our programs, but also for regional partners and communities as we work towards shared goals.
- **Provide a service** to users who can access critical data that has until now been non-existent, scattered or technologically or financially inaccessible.
- **Serve as a policy and communications tool** for Metro staff and elected officials through which to ground policy conversations, set the stage for key investments, and build shared understanding.
- **Support a coordinated data strategy** to reduce duplicative efforts and investments, fill regional data gaps and solidify Metro's role as a regional data hub.

The Regional Barometer makes progress towards Metro's regional goals by:

- Increasing capacity of Metro's staff and supporting impactful work
- Increasing capacity of CBOs and community leaders to advocate for and target investments and services towards shared regional goals
- Building public trust and solidifying Metro's mandate
- Increasing data-driven policymaking region-wide
- Expanding regional data capacity and accessibility

Success requires:

- Relevant, up-to-date and trusted data
- Usable and understandable tool
- Users see their priorities and needs reflected
- Effective program measurement tied to goals

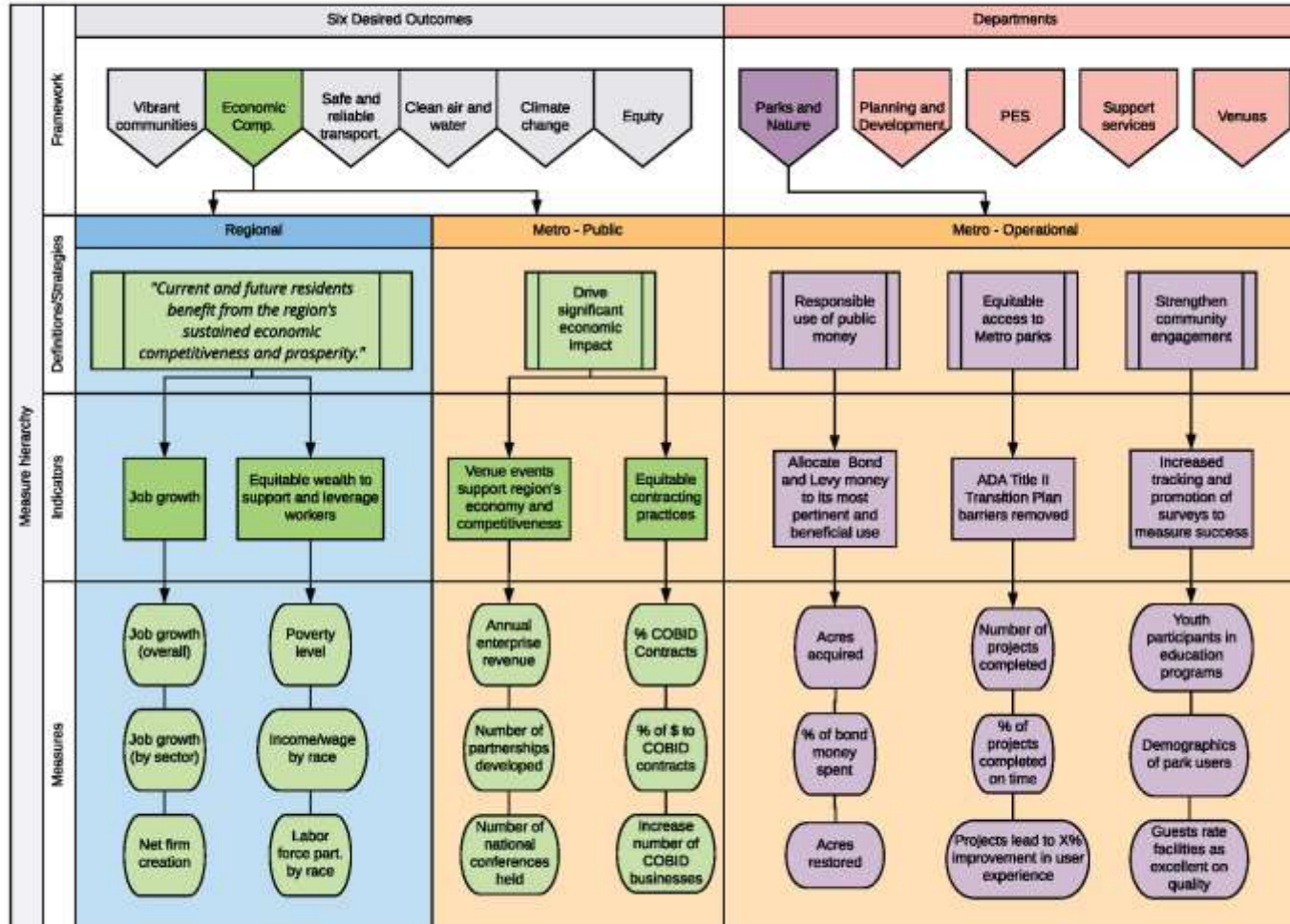
Project phases

- Phase 1, By Dec. 2019: Tool is made public with existing datasets, strategic data plan
- Phase 2, TBD: Develop composite indicators, performance targets and benchmarks; conduct robust community engagement; build out strategic data plan

By the Numbers (sample metrics)

Regional barometer

Operational measures



Regional Barometer - Draft Phase 1 measures Date: 6.4.2019

Safe and reliable transportation

Outcome	Indicator	Measure	Source
Safe and reliable transportation	Safety	Fatalities (people)	ODOT Crash Data Annual with 1-1.5 year lag time (i.e. 2015 data available sometime in 2016 or early 2017)
		Fatality rate (people per 100K pop)	
		Serious injury (people)	
		Serious injury rate (people per 100K pop)	
		Non-motorized fatalities and serious injuries (people)	
	Mobility and access	Vehicle miles traveled	ODOT and Research center
		Walking mode share	American Community Survey
		Biking mode share	
		Transit mode share	
		Shared ride mode share	
		Number and share of jobs within 1/4-mile of bus	InfoUSA points and RLIS Transit Data
		Number and share of jobs and households within ½ mile high capacity transit or frequent service transit	
		Number and share of jobs and households within 1/4-mile of bus	
	Ridership by service type (regionally)	TriMet	
	Reliability	National highway system vehicle travel reliability	Regional Integrated Transportation Information System (RITIS) + INRIX
		Vehicle hours of delay per car	Regional Integrated Transportation Information System (RITIS) + INRIX
Public transit reliability		TriMet	

Regional Barometer - Draft Phase 1 measures Date: 6.4.2019

Economic competitiveness

Outcome	Indicator	Measure	Source
Economic competitiveness	Job activity and access	Raw # of jobs	InfoUSA
		High/middle/low wage jobs	LEHD Census
		Goods-producing and tradable service jobs	InfoUSA
		10 year change in jobs	LEHD/LODES
		Opportunity occupations (living-wage, low-barrier)	LEHD jobs + workforce data
		High/mid and low wage jobs by county	LEHD jobs + workforce data
	Equity and inclusivity	Unemployment by race	American Community Survey 5-year estimates
		Income by race	
		Poverty level	
		Income inequality	
		Change in median income by race	
		Minority owned small business rate	American Survey of Entrepreneurs
	Developability and Market activity	Industrial and commercial sq. ft.	RLIS and Clark Co Building Footprints and Zoning Layers
		Zoned capacity	RLIS and Clark Co Building Footprints and Zoning Layers
		Property value/unaffordability	County Assessors (RLIS and Clark Co GIS)
		Permit activity (residential)	Construction Monitor

Regional Barometer - Draft Phase 1 measures Date: 6.4.2019

Clean air, water and healthy ecosystems

Outcome	Indicator	Measure	Source
Clean air, water and healthy ecosystems	Air quality	# of unhealthy air quality days	Department of Environmental Quality
		Asthma rates (Total and change in)	Oregon health authority
		National-Scale Air Toxics Assessment (NATA) air toxics cancer risk	US EPA National Air Toxics Assessment
		NATA respiratory hazard index	US EPA National Air Toxics Assessment
		Particulate matter	EPA, Office of Air and Radiation (OAR) fusion of model and monitor data.
		Traffic proximity and volume	Calculated from 2014 U.S. Department of Transportation (DOT) traffic data, retrieved 2016
		NATA diesel PM	US EPA National Air Toxics Assessment
		Ozone	US EPA Office of Air and Radiation fusion of model and monitor data
	Built environment	Impervious surfaces	LIDAR
		Lead paint + Radon indicator	Calculated based on Census/American Community Survey (ACS) data, retrieved 2018; Radon data from Oregon Health Authority
	Clean water and healthy ecosystems	Water quality index	Department of Environmental Quality - Biannual assessment
		Parks and Protected land (as defined by ORCA)	Metro
		Habitat continuity	LIDAR
		Tree canopy	LIDAR

Regional Barometer - Draft Phase 1 measures Date: 6.4.2019

Leadership on climate change

Outcome	Indicator	Measure	Source
Leadership on climate change	Emissions and waste	Greenhouse gas inventory, consumption-based and sector-based	Using most recent consumption-based data, with an eye to potential future investment in updated model
		Total waste generated	Metro PES
		Avoided GHGs Resulting from Material Recovery	Metro PES
	Climate smart transportation	Daily vehicle miles per capita	Regional Transportation Plan
		Vehicle emissions	Regional Transportation Plan
		Walking mode share	American Community Survey Data on Journey to Work
		Biking mode share	American Community Survey Data on Journey to Work
		Transit mode share	American Community Survey Data on Journey to Work
		Shared ride mode share	American Community Survey Data on Journey to Work
	Community impact	Heat Islands	Portland State University
		Flooding risk	Portland State University
		Heat Vulnerability Index	Portland State University
		Canopy cover/carbon sink	LIDAR
	Energy and urban form	Walkability	Regional Transportation Plan
		Infill development	Regional Transportation Plan
		Residential development	Regional Transportation Plan
		Inefficient home heating	American Community Survey
		Sq. ft. per resident	RLIS

Regional Barometer - Draft Phase 1 measures Date: 6.4.2019

Vibrant Communities

Outcome	Indicator	Measure	Source
Transportation		Multimodal travel	American Community Survey
		Frequent transit access	RLIS Transit Data
Economic		Unemployment	ACS and InfoUSA
		Jobs access	
		Poverty	
Housing	Displacement and houselessness	Homelessness (rate per 10,000 people, one night shelter and street counts)	Counties
		Household tenure by race	American Community Survey
		Change in % POC	American Community Survey
		Housing cost burden (by race)	American Community Survey
	Homeownership	Homeownership by race	American Community Survey
		(compare to income by race)	Metro Research Center
	Rental	Median rental cost (two bedroom units, others)	
		Residential vacancy rates	
	Affordable housing	Shortfall or surplus of 2 bedroom apartments	
		yearly change)	
Health	Communicable diseases	Sexually transmitted diseases	Oregon Health Authority
		Pertussis (whooping cough)	
		Enteric diseases (e. Coli, salmonella, shigella)	
		Tuberculosis	
		Strep	
		Vaccine rate	
	Chronic diseases	Youth tobacco and alcohol exposure/marketing	
		Accessibility to tobacco and alcohol	
		Exposure to unhealthy food options	
		Depression rate	
	Environmental health	Asthma	
		Heart attacks	
		Radon risk	
		BMI (obesity)	
	Health care	Life expectancy at birth	
		Access to health care	
		Uninsured rate	
		Under-insurance rate	

Regional Barometer - Draft Phase 1 measures *Date: 6.4.2019*

Vibrant Communities

Outcome	Indicator	Measure	Source
Food	Food access	SNAP usage	Federal databases
	Access to unhealthy food	# of fast food restaurants per 1,000 population	Oregon health authority
		# of fast food restaurants within 1000 ft. of a	
Education	Early education	Regional supply/shortage of child care	Oregon Department of Education
		Pre-K assessment data (kindergarten preparedness)	
	Educational outcomes	Standardized test scores	
		High school graduation rate	
		College going rates	
		Attendance	
	School capacity	Staffing level per student	
Diversity of teachers			
Land Use	Transportation	Walk score	WalkScore
		Urban density with light rail and frequent transit stop overlay	Metro Research Center
		Planned investment in transportation improvements in centers overall and as a percentage of overall transportation investments	
	Development	Number of new housing permits	
		% of permits that fall in designated centers and corridors	
		# of permits for missing middle-type housing	
	Development	% of new permits located within .25 miles of frequent service transit	Metro Research Center
		% of new permits that are redevelopment or infill vs % of new permits located in UGH expansion areas	
Parks and Nature	Access to parks and green space	Metro Research Center	
	Acres of parks and protected green space		
	# of new acres of protected lands developed		
Restorative justice	Hate crimes, location and rate	FBI	
	Adult incarceration, probation and parole by	Oregon Department of Corrections	
	Juvenile and adult recidivism	Oregon Department of Corrections	
	Oregonians by race and frequency of traffic stops, search following stops in the last 12 months	Law Enforcement Contacts Policy Data and Review Committee, 2007	
Civic and community engagement	Voter registration and participation by race and ethnicity	Counties	

Regional Barometer - Draft Phase 1 measures *Date: 6.4.2019*

Equity

Baseline dimension	Measure	Source
Transportation	Fatalities (people)	ODOT
	Number and share of jobs and households within 1/4-mile of bus	Regional Transportation Plan
	Number and share of jobs and households within 1/2-mile of high capacity transit or frequent service transit	Regional Transportation Plan
Economic	High/mid and low wage job access in 30 min car/transit (AM)	Info USA
	Unemployment by race	American Community Survey
	Income by race	American Community Survey
	Poverty level	American Community Survey
Housing	Change in % people of color	American Community Survey
	Income needed to afford rents (compare to income by race)	American Community Survey
	Inventory of public affordable units (total and yearly change)	Metro data set
	Homeownership by race	American Community Survey
	% change median rent vs % change in income of renters	American Community Survey
Health	Sexually transmitted diseases	Oregon Health Authority
	Youth tobacco and alcohol exposure/marketing	
	Accessibility to tobacco and alcohol	
	BMI (obesity)	
	Life expectancy at birth	
	Under-insured rates	
Food	# of fast food restaurants per 1,000 population	Oregon Health Authority
	SNAP usage	Federal databases

Regional Barometer - Draft Phase 1 measures *Date: 6.4.2019*

Equity

Baseline dimension	Measure	Source
Education	Pre-K assessment data (kindergarten preparedness)	Oregon Department of Education
	High school graduation rate	
	College going rates	
	Staffing-level per school	
	Diversity of teachers and staff	
Civic and community engagement	Voter registration and participation by race and ethnicity	Counties
Environ- mental	Air toxics cancer risk	US EPA National Air Toxics Assessment
	Asthma rates	Oregon health authority
	Traffic proximity and volume	Calculated from 2014 U.S. Department of Transportation (DOT) traffic data, retrieved 2016
	Tree canopy	LIDAR
	Parks and Protected land (as defined by ORCA)	Metro
Restorative justice	Hate crimes, location and rate	FBI
	Adult incarceration, probation and parole by race.	Oregon Department of Corrections
	High school discipline rates (by race/school)	Oregon Department of Corrections
	Juvenile Recidivism	Oregon Juvenile Justice Information System, annually
	Oregonians by race and frequency of traffic stops, search following stops in the last 12 months	Law Enforcement Contacts Policy Data and Review Committee, 2007

Regional Barometer - Potential Phase 2 measures Date: 6.4.2019

Safe and reliable transportation

Outcome	Indicator	Measure	Source
Transport.	Mobility and access	Transportation cost burden	Housing and Transportation Index
	Reliability	Map of congestion	ODOT

Clean air, water and healthy ecosystems

Outcome	Indicator	Measure	Source
Air, water, ecosystems	Healthy ecosystems	Bird population health	Klamath Bird Observatory
		Aquatic invertebrate habitat health	Portland Bureau of Environmental Services + Department of Environmental Quality
		Fish population health	US Fish and Wildlife; USGS

Leadership on climate change

Outcome	Indicator	Measure	Source
Climate	Emissions and waste	Sector-based GHG inventory	Pending council investment
	Energy and urban form	Fuel consumption by type	Oregon Department of Energy
		Electricity generation by fuel source	Utilities (unclear how to parse the differences)

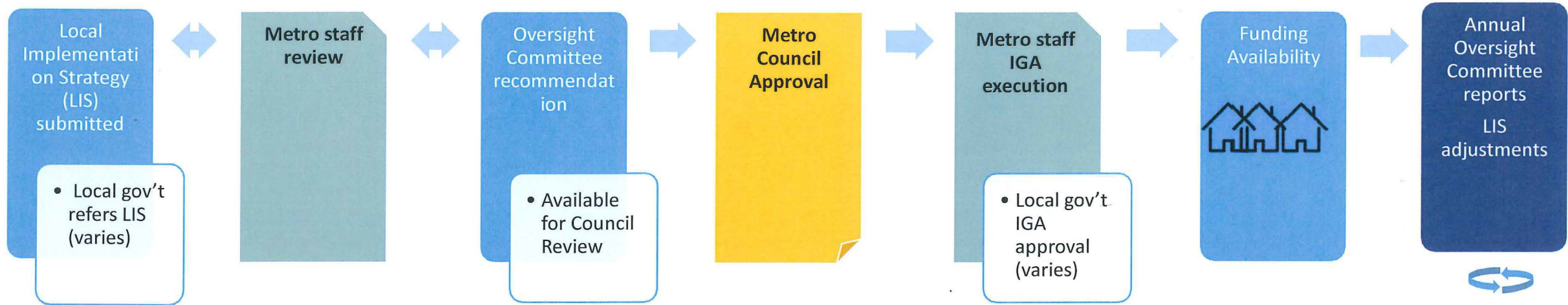
Regional Barometer - Potential Phase 2 measures *Date: 6.4.2019*

Vibrant Communities and Equity

Outcome	Indicator	Measure	Source
Transportation		Transportation cost burden	Metro Research Center
Food	Food production	Commercial food growers	Not currently collected
		Community gardens	Not currently collected
	Access	Asset or needs assessment	Not currently collected
Arts and cultural activity and access	Arts and culture access	Attendance of large arts events by race	RACC has some of this data
		Perceptions of access to relevant arts and culture	Not currently collected
	Arts and cultural activity	Inventory of affordable arts space	Not currently collected
		Arts and culture asset mapping	Not currently collected
	Public investments	Arts education	Not currently collected
		% of public investments that go to culturally specific arts organizations	Not currently collected
Restorative Justice		Use of non-fatal and fatal force by police	Jurisdictions
		Re-entry services	Unknown
		Victims services	Unknown
		Mental health and addiction services	Unknown
Civic and community engagement		Parity in representation of elected officials (by race and gender)	Not currently collected
		Communities (of color, in particular) have good perceptions of (and trust in) government	Not currently collected
		Communities of color are awarded resource opportunities by government entities	Not currently collected

Materials following this page were distributed at the meeting.

Housing Bond Local Implementation Strategy Adoption Process



Anticipated Housing Bond Local Implementation Strategies Schedule			
Participating Jurisdictions	Local Governing Body Endorsement	Oversight Committee Recommendation Meeting	Metro Council Consideration
Housing Authority of Washington County	June 25	July 24	August 1
City of Beaverton	July 9		
Housing Authority of Clackamas County	TBD	August 7	September 5
Metro Site Acquisition	TBD		
City of Hillsboro	August 20	September 11	September 26
City of Gresham	TBD		
Home Forward	TBD	November 6	November 21
City of Portland	TBD	TBD	TBD