



Metro

600 NE Grand Ave.
Portland, OR 97232-2736

Agenda

Meeting: Smith and Bybee Wetlands Advisory Committee (SBAC)
Date: Tuesday, November 19, 2019
Time: 5:30 to 7:30 p.m.
Place: Metro Regional Center - Room 270
600 NE Grand Ave., Portland

5:30 p.m.	Welcome and introductions	All
5:35 p.m.	Approve September 2019 meeting minutes	Troy Clark
5:40 p.m.	Smith and Bybee planning projects updates	Allan Schmidt
6:35 p.m.	Dreiling property	Jonathan Soll
6:45 p.m.	Wapato view discussion	Troy Clark
7:05 p.m.	Conservation projects updates	Jonathan Soll
7:25 p.m.	Goals and next meeting agenda	All
7:30 p.m.	Adjourn	

Upcoming SBAC meetings:

Tuesday, January 28, 2020 at Metro Regional Center

For agenda/schedule information, contact Annie Toledo at 503.813.7565 or annie.toledo@oregonmetro.gov

Metro's nondiscrimination notice

Metro respects civil rights. Metro fully complies with Title VI of the Civil Rights Act of 1964 that bans discrimination on the basis of race, color or national origin. For more information on Metro's civil rights program, or to obtain a Title VI complaint form, visit www.oregonmetro.gov/civilrights or call 503-797-1536.

Metro provides services or accommodations upon request to persons with disabilities and people who need an interpreter at public meetings.

All Metro meetings are wheelchair accessible. If you need a sign language interpreter, communication aid or language assistance, call 503-797-1536 or TDD/TTY 503-797-1804 (8 a.m. to 5 p.m. weekdays) 7 business days in advance of the meeting to accommodate your request. For up-to-date public transportation information, visit TriMet's website at www.trimet.org



Meeting minutes

Smith and Bybee Advisory Committee

November 19, 2019

Committee members in attendance

Troy ClarkAudubon Society of Portland (Chair)
Carrie ButlerPort of Portland (Vice Chair)
Matthew LeeColumbia Slough Watershed Council
Emily RothFriends of Smith & Bybee Lakes
Jennifer DevlinCity of Portland, Bureau of Environmental Services
Jonathan SollMetro, Parks and Nature
Patt OpdykeNorth Portland Neighbors
Bill BriggsOil Re-Refining Company (ORRCO)
Jen LevySt. Johns Neighborhood Association

Others in attendance

Allan SchmidtMetro, Parks and Nature
Zach JohnsonLois D. Cohen Associates
Annie ToledoMetro, Parks and Nature

Committee members not in attendance

Eric TonsagerOregon Bass and Panfish Club
Pat Jewett40-Mile Loop Land Trust

WELCOME

The September 2019 minutes were approved.

SMITH AND BYBEE PLANNING PROJECTS UPDATES

Allan Schmidt of Metro Parks and Nature gave updates regarding the Columbia Blvd. Bridge and St. Johns Prairie Trail projects. His presentation included slides of demographic statistics which outlined that these developments will provide access to nature to a diverse community.

Attachment 1.

Columbia Blvd. Bridge

Currently in Phase 1. The layout alternatives are identified in the context map included in the attached slideshow. The bridge design will look similar to the bridge that connects Pier Park and Chimney Park.

Since the project isn't starting with a blank canvas, the public process for this will be different. Allan handed out questions to the committee to help the team understand public expectations about the project. *Attachment 2.* There is an open house scheduled for December 14, 2019 at Chimney Park. There was a recommendation to move the open house to a more central location in St. Johns to make it accessible to a larger audience. The community center and James John Elementary were recommended locations.

Some of the committee's concerns are listed below:

- Parking, lack of
 - Since this is a federally funded project, parking was not taken into consideration.
 - People in the community are heavy car users.
 - A committee member rebutted that adding more impervious surfaces to an already cement-dominated landscape isn't ideal for the environment.
- Safety
 - Lighting
 - Federally funded projects like this have to be open 24 hours.
 - Proximity of trail to busy road in one of the alignments is a concern.
- Maintaining current infrastructure in the park, such as a water source for dogs.
- Moderate grading for accessibility—citing both ADA and recreation reasons.

St. Johns Prairie Trail

The committee highlighted some concerns they have for this project:

- Lighting
 - However, since this project is funded by Metro, a vehicle gate will mostly likely be installed—closing the site in the evenings.
- Dogs
- Parking
 - Especially for potential boat launch.
- Nesting turtles and wildlife passage
 - There are nesting turtles near the proposed trail alignment. This needs to be taken into account during the planning process.
 - Metro scientists assigned to the project will coordinate to make sure that there is adequate wildlife passage and space available for turtle crossing.

DREILING PROPERTY

The James Dreiling $\frac{1}{4}$ Interest was finally acquired. Stabilization work is in progress, improving habitat by removal of invasive species and installation of native plants. Because it is stabilization work, bond funds can be used for the work on the so-called Dreiling property. The last piece of property within the core Smith and Bybee Boundary still to be protected is owned by Bennet Broadcasting. Despite some promising negotiations in the past, no deal has been crafted to allow for purchase of property rights or to allow for habitat restoration by Metro.

WAPATO VIEW DISCUSSION

The demolition permit is valid until March, and the demolition contract is in place. A Harsch representative mentioned that it may be 2 to 4 weeks before they get started on the work. There was discussion by the group about a loophole that the Portland City Council recently voted to close which had allowed commercial and industrial properties to be exempt from the requirement of preserving at least a third of the existing trees. It is presumed that this decision will have no effect on Harsch's permit since it was approved prior to the code change. Troy will keep in contact with Harsch to see if they can provide updates at the January or March meeting.

CONSERVATION PROJECTS UPDATE

- Phases 1 and 2 of the St. Johns Prairie are underway. Phase 3 has been started and further restoration work has been planned along the future trail and overlook. Phase 4 has not yet begun; there will be funding issues with that portion. We anticipate applying for an OWEB grant before launching phase 4.
- The Dreiling property is currently in stabilization.
- The first year of Ludwigia research project has been completed and Jonathan will share the research results when they are available.

ACTION ITEMS

- Answer Columbia Blvd. Bridge project public expectations questions; send to Allan Schmidt.
- Troy to coordinate with Harsch regarding attending a January or March 2020 meeting and providing updates on the project.
- Follow up with Metro leadership regarding the Fund balance recommendation now that the bond has passed.

GOALS AND NEXT MEETING AGENDA

- Revisit the CNRP.
- Harsch to potentially visit at the next meeting.
- Jonathan to provide draft budget for FY21; status report of habitat and goals.
- Allan to present on Columbia Blvd. Bridge and St. Johns Prairie Trail updates
- Potentially move bird monitoring presentation from January to March to accommodate aforementioned agenda items.

Meeting adjourned at 7:15 p.m.



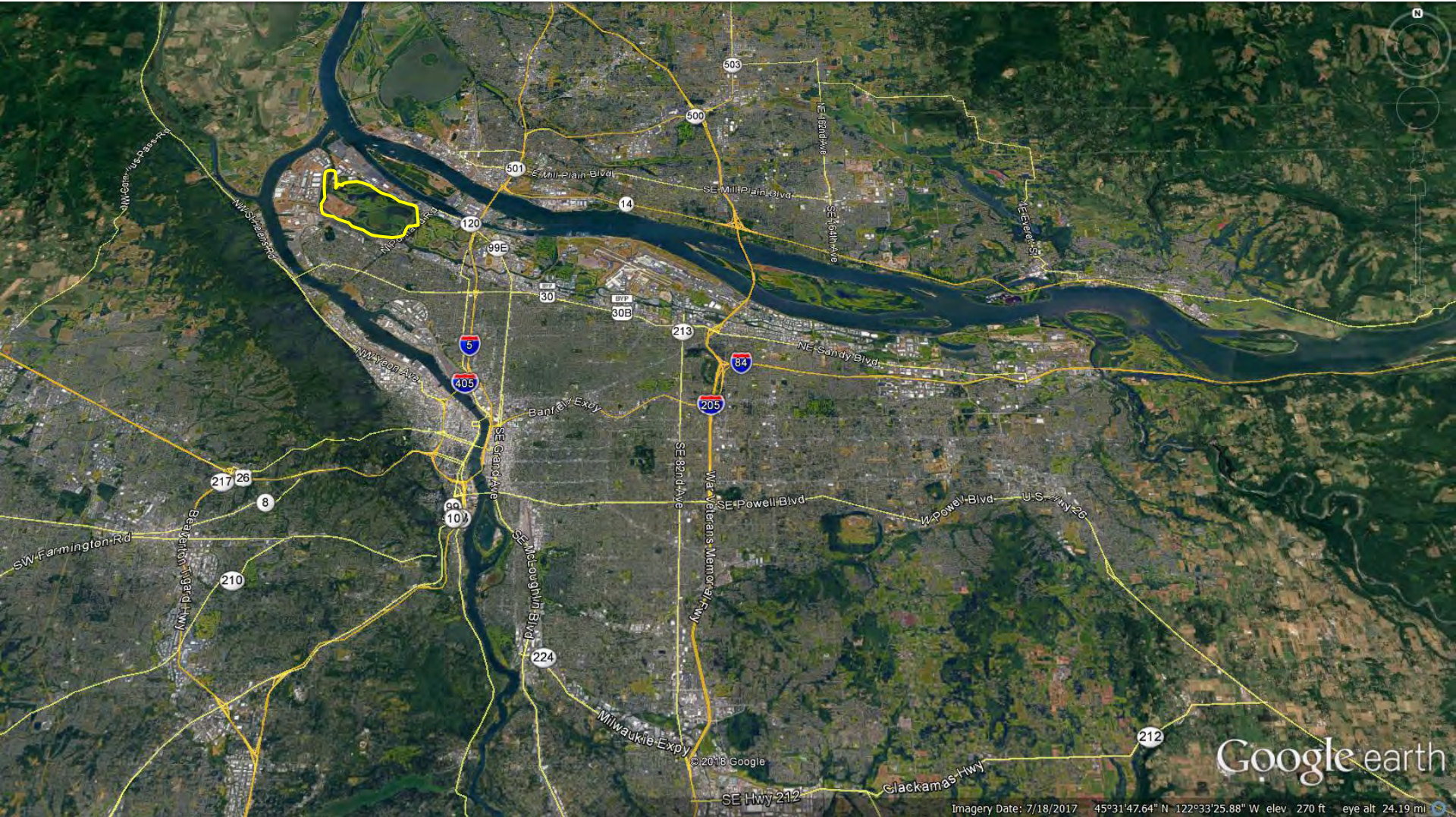
Columbia Blvd Bridge & St. Johns Prairie Trail PROJECT UPDATE

Tuesday, Nov. 19, 2019

Attachment 1

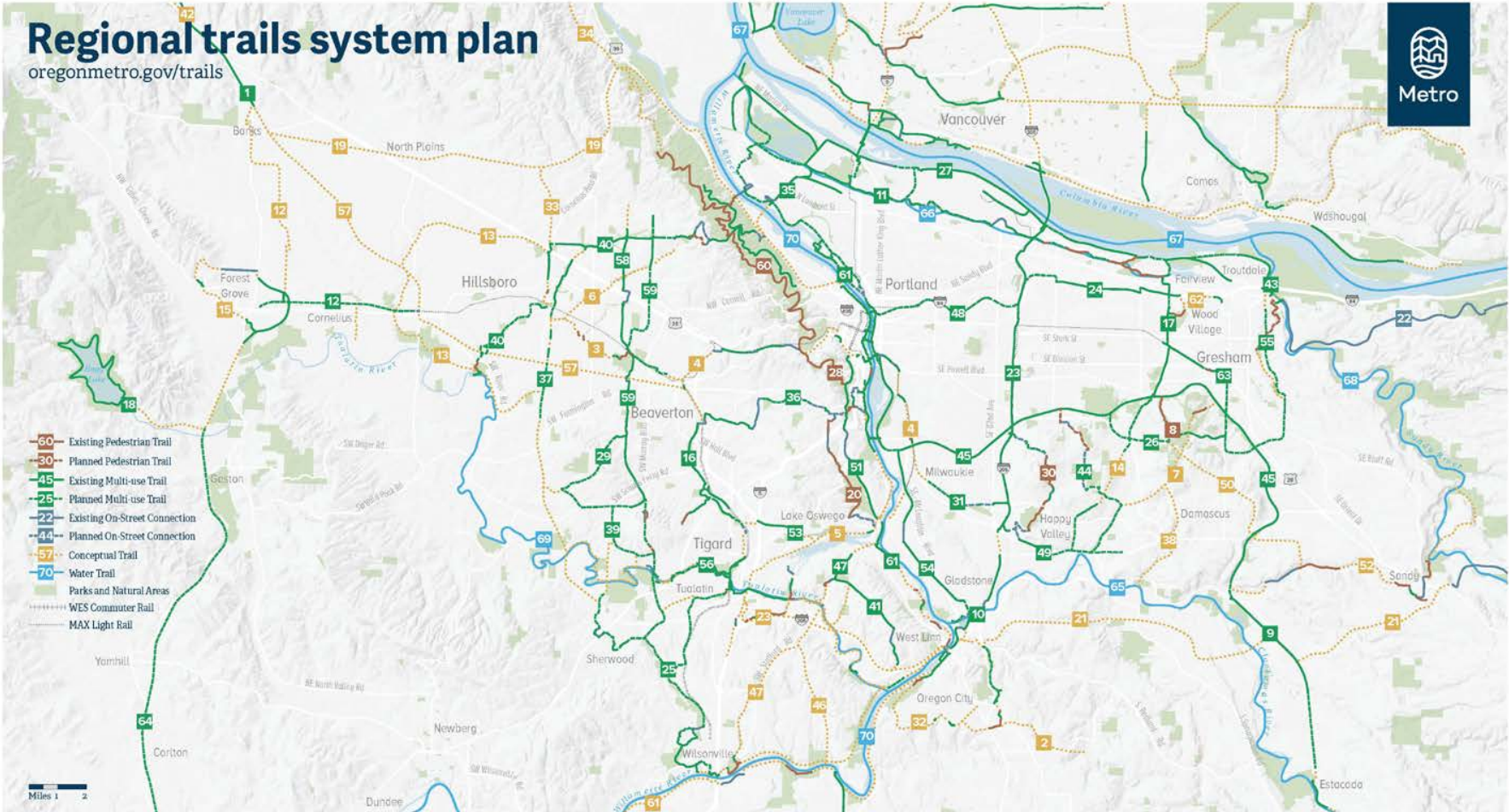


Attachment 1



Regional trails system plan

oregonmetro.gov/trails

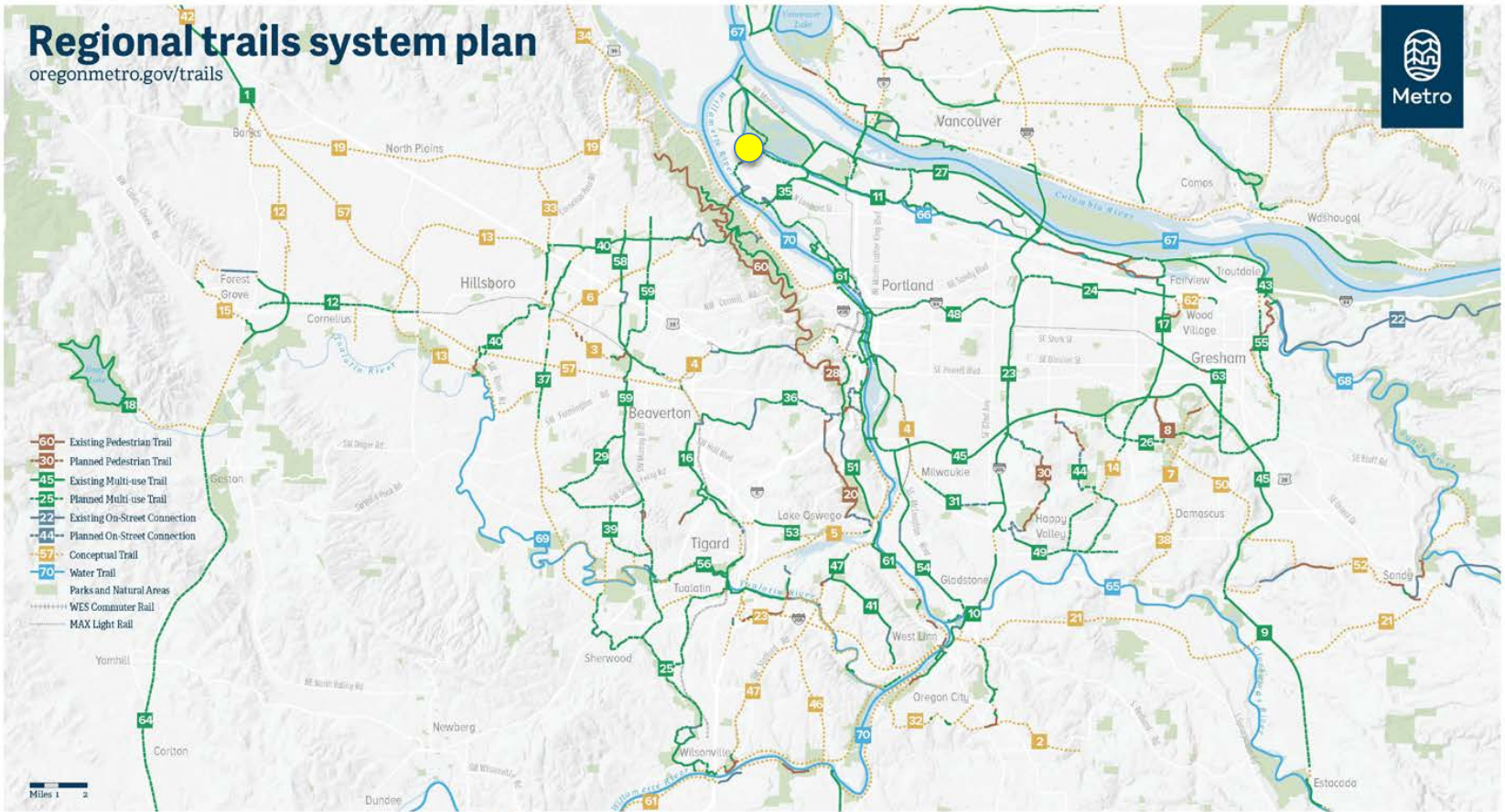


- | | | | | | | | |
|----------------------------------|---------------------------------|-------------------------------------|------------------------------|-----------------------------------|-----------------------------|---------------------------------|--|
| 1. Banks-Vernonia Trail | 9. Cazadero Trail | 17. Gresham-Fairview Trail | 25. Ice Age Tonquin Trail | 33. Oregon Electric Railway Trail | 41. Rosemont Trail | 49. Sunrise Corridor Trail | 57. Tualatin Valley Trail |
| 2. Beaver Lake Trail | 10. Clackamas River Greenway | 18. Hagg Lake Trail | 26. Kelley Creek Trail | 34. Pacific Greenway Trail | 42. Salmonberry Trail | 50. Sunshine Valley Trail | 58. Waterhouse Trail |
| 3. Beaverton Creek Trail | 11. Columbia Slough Trail | 19. Helvetia Trail | 27. Marine Drive Trail | 35. Peninsula Crossing Trail | 43. Sandy River Greenway | 51. Terwilliger Trail | 59. Westside Trail |
| 4. Beaverton to Milwaukie Trail | 12. Council Creek Trail | 20. Hillsdale to Lake Oswego Trail | 28. Marquam Trail | 36. Red Electric Trail | 44. Scouters Mountain Trail | 52. Tickle Creek Trail | 60. Wildwood Trail |
| 5. Bridgeport to Milwaukie Trail | 13. Crescent Park Trail | 21. Historic Barlow Road Trail | 29. McKernan Creek Trail | 37. Reedville Trail | 45. Springwater Trail | 53. Tigard to Lake Oswego Trail | 61. Willamette River Greenway |
| 6. Bronson Creek Trail | 14. East Buttes Powerline Trail | 22. Historic Columbia River Highway | 30. Mount Scott Trail | 38. Richardson Creek Trail | 46. Stafford to Canby Trail | 54. Trolley Trail | 62. Wood Village to Salish Ponds Trail |
| 7. Butler Buttes Trail | 15. Emerald Neckline Trail | 23. I-205 Trail | 31. North Clackamas Greenway | 39. River Terrace Trail | 47. Stafford Trail | 55. Troutdale to Gresham Trail | 63. WyEast Way Path |
| 8. Butler Creek Trail | 16. Fanno Creek Trail | 24. I-84 Trail | 40. Rock Creek Trail | 48. Sullivan's Gulch Trail | 56. Tualatin River Greenway | 64. Yamhelas Westsider Trail | |

- Water Trails**
- 65. Clackamas River Water Trail
 - 66. Columbia Slough Water Trail
 - 67. Lower Columbia River Water Trail
 - 68. Sandy River Water Trail
 - 69. Tualatin River Water Trail
 - 70. Willamette River Water Trail

Regional trails system plan

oregonmetro.gov/trails



- | | | | | | | |
|----------------------------------|---------------------------------|-------------------------------------|------------------------------|-----------------------------------|---------------------------------|---------------------------------|
| 1. Banks-Vernonia Trail | 9. Cazadero Trail | 17. Gresham-Fairview Trail | 25. Ice Age Tonguin Trail | 33. Oregon Electric Railway Trail | 41. Rosemont Trail | 57. Tualatin Valley Trail |
| 2. Beaver Lake Trail | 10. Clackamas River Greenway | 18. Hagg Lake Trail | 26. Kelley Creek Trail | 34. Pacific Greenway Trail | 42. Salmonberry Trail | 58. Waterhouse Trail |
| 3. Beaverton Creek Trail | 11. Columbia Slough Trail | 19. Helvetia Trail | 27. Marine Drive Trail | 35. Peninsula Crossing Trail | 43. Sandy River Greenway | 59. Westside Trail |
| 4. Beaverton to Milwaukie Trail | 12. Council Creek Trail | 20. Hillsdale to Lake Oswego Trail | 28. Marquam Trail | 36. Red Electric Trail | 44. Scouters Mountain Trail | 60. Columbia Slough Water Trail |
| 5. Bridgeport to Milwaukie Trail | 13. Crescent Park Trail | 21. Historic Barlow Road Trail | 29. McKernan Creek Trail | 37. Reedville Trail | 45. Springwater Trail | 61. Willamette River Greenway |
| 6. Bronson Creek Trail | 14. East Buttes Powerline Trail | 22. Historic Columbia River Highway | 30. Mount Scott Trail | 38. Richardson Creek Trail | 46. Stafford to Canby Trail | 62. Sandy River Water Trail |
| 7. Butler Buttes Trail | 15. Emerald Neckline Trail | 23. I-205 Trail | 31. North Clackamas Greenway | 39. River Terrace Trail | 47. Stafford Trail | 63. Tualatin River Water Trail |
| 8. Butler Creek Trail | 16. Fanno Creek Trail | 24. I-84 Trail | 32. Oregon City Loop Trail | 40. Rock Creek Trail | 48. Sullivan's Gulch Trail | 64. Yamhelas Westsider Trail |
| | | | | | 49. Sunrise Corridor Trail | |
| | | | | | 50. Sunshine Valley Trail | |
| | | | | | 51. Terwilliger Trail | |
| | | | | | 52. Tickle Creek Trail | |
| | | | | | 53. Tigard to Lake Oswego Trail | |
| | | | | | 54. Trolley Trail | |
| | | | | | 55. Troutdale to Gresham Trail | |
| | | | | | 56. Tualatin River Greenway | |

June 2018



Attachment 1



Area Demographics

Age Distribution

Under 5 (8%, 1079) 5 to 17 (15%, 1918) 18 to 21 (9%, 1139) 22 to 39 (30%, 3727) 40 to 64 (27%, 3416) 65 and over (7%, 928)

Household Types

Families w/ Children (20%, 780) Families w/o Children (44%, 1728) Female w/o Male (19%, 748) Male w/o Female (7%) One-Person Male (2%, 99) One-Person Female (5%, 229)

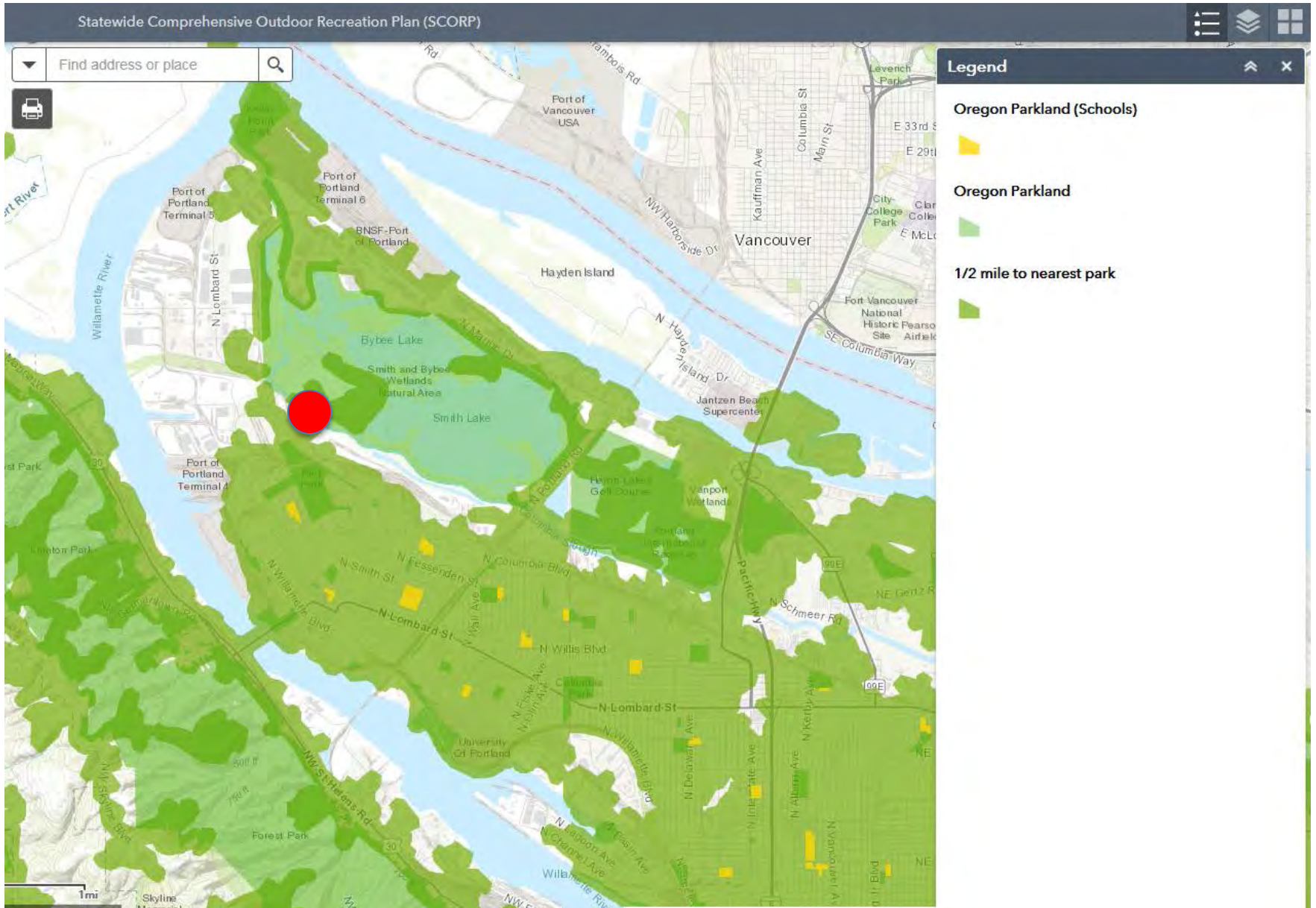
Race Distribution

White (64%, 8456) Black (11%, 1514) Native American, Alaskan (4%, 609) Native Islander (1%, 237) Asian (5%, 722) Hispanic (20%, 2660) Other (12%, 1644)

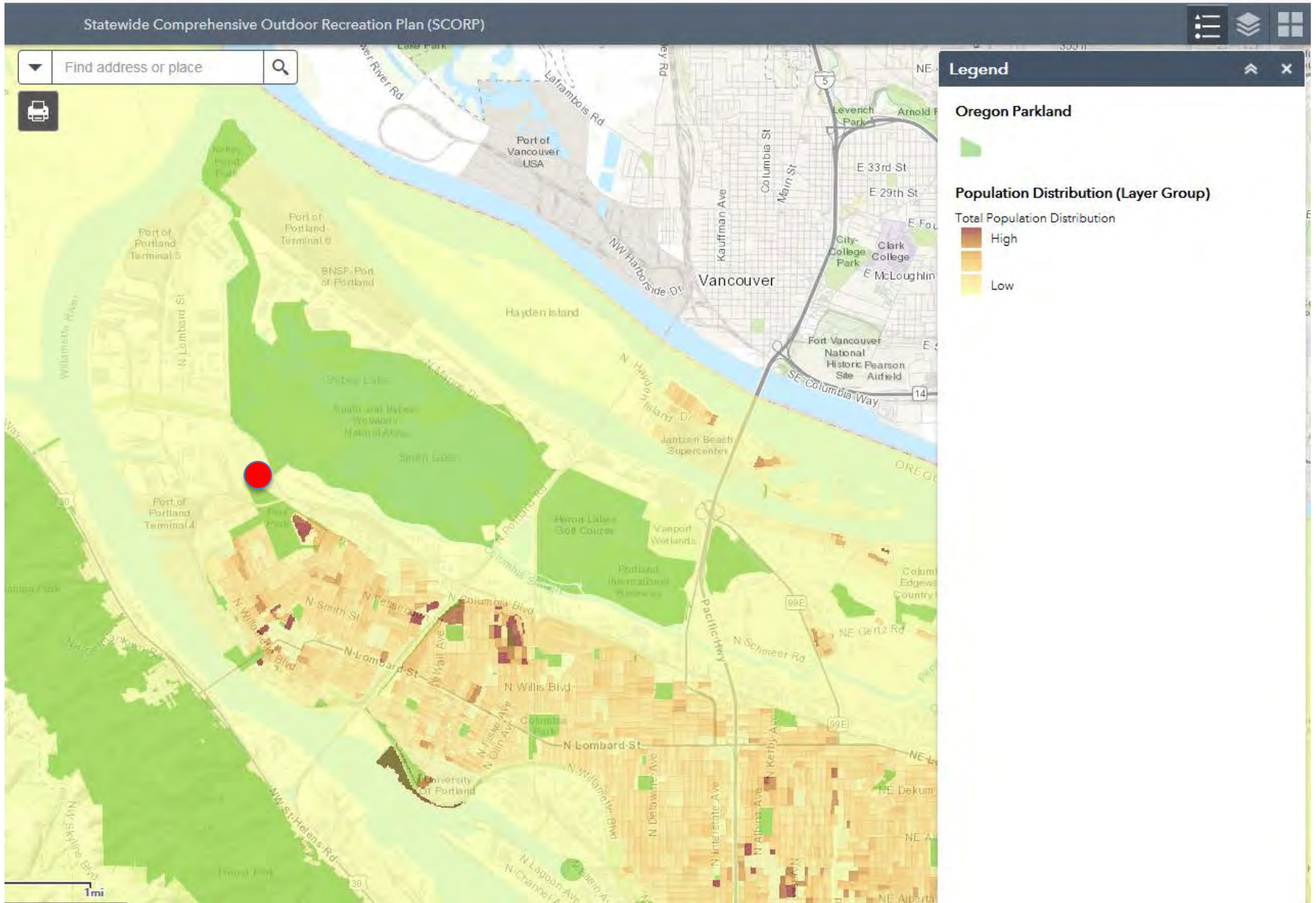
From this information we know that there is **an opportunity to engage families with children and youth (30% of population is under 21 yrs.)**. Also, more than **20% of the community identifies as Hispanic with a total of 36% identifying as a race other than white**. This is supported by **PPS data for James John Elementary School**. 36% of students identify as White, **26% are English Language Learners and 59% are counted as historically underserved**.

(Data from PPS, ACS and Metro)

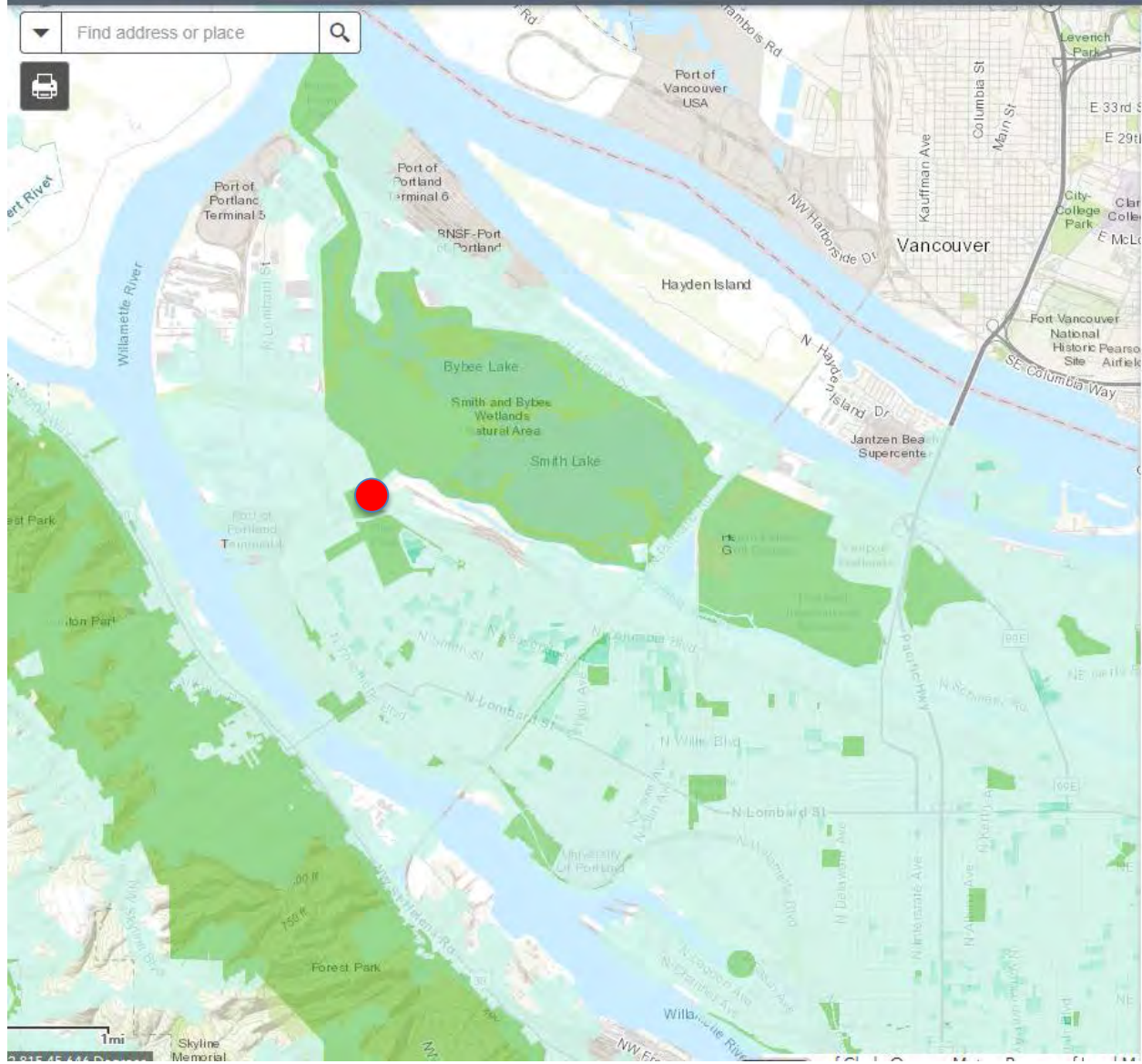
Attachment 1



Attachment 1



Attachment 1



Legend

Oregon Parkland

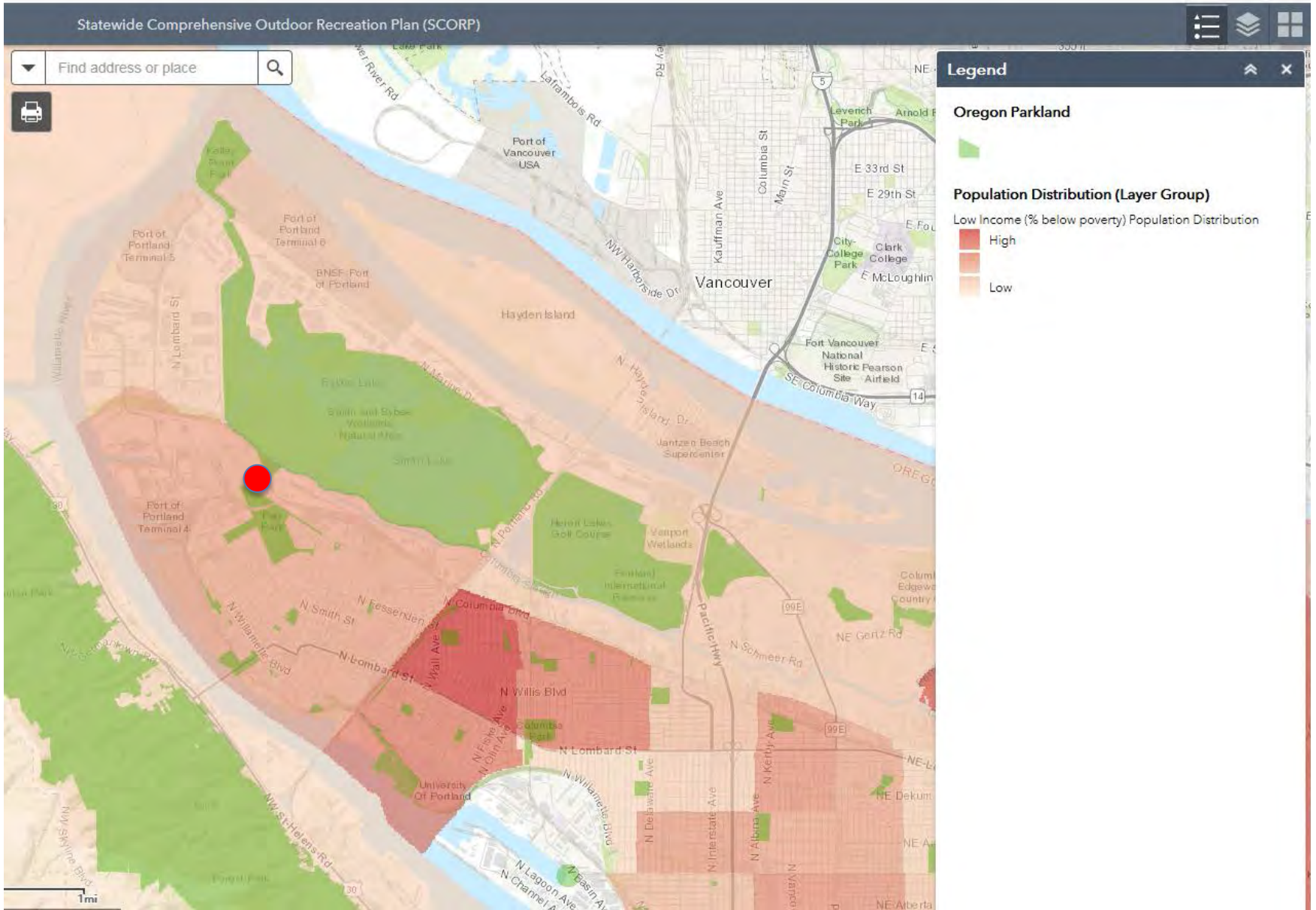
- Green square icon

Park Need (Layer Group)

Park Need - Hispanic Population

- Very Low (lightest green)
- Low (light green)
- Med (medium green)
- High (dark green)
- Very High (darkest green)

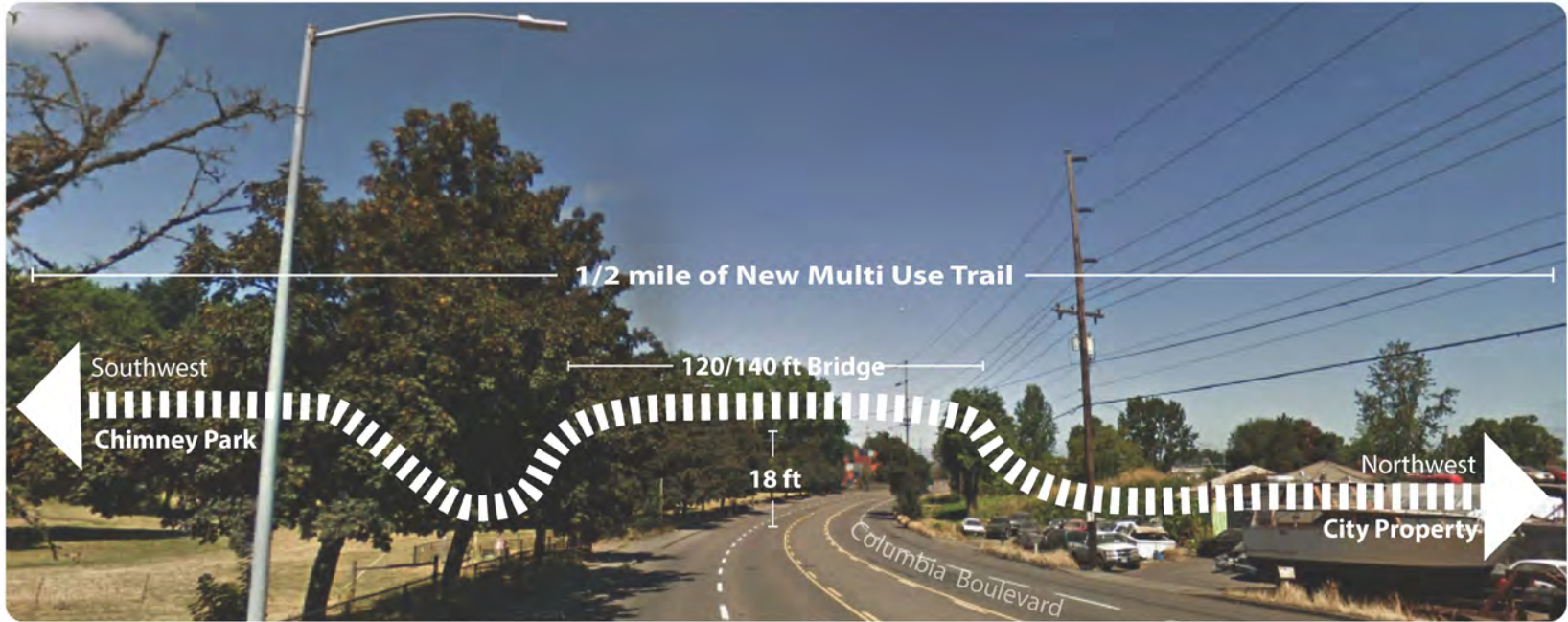
Attachment 1



Attachment 1







12' paved trail



example bridge



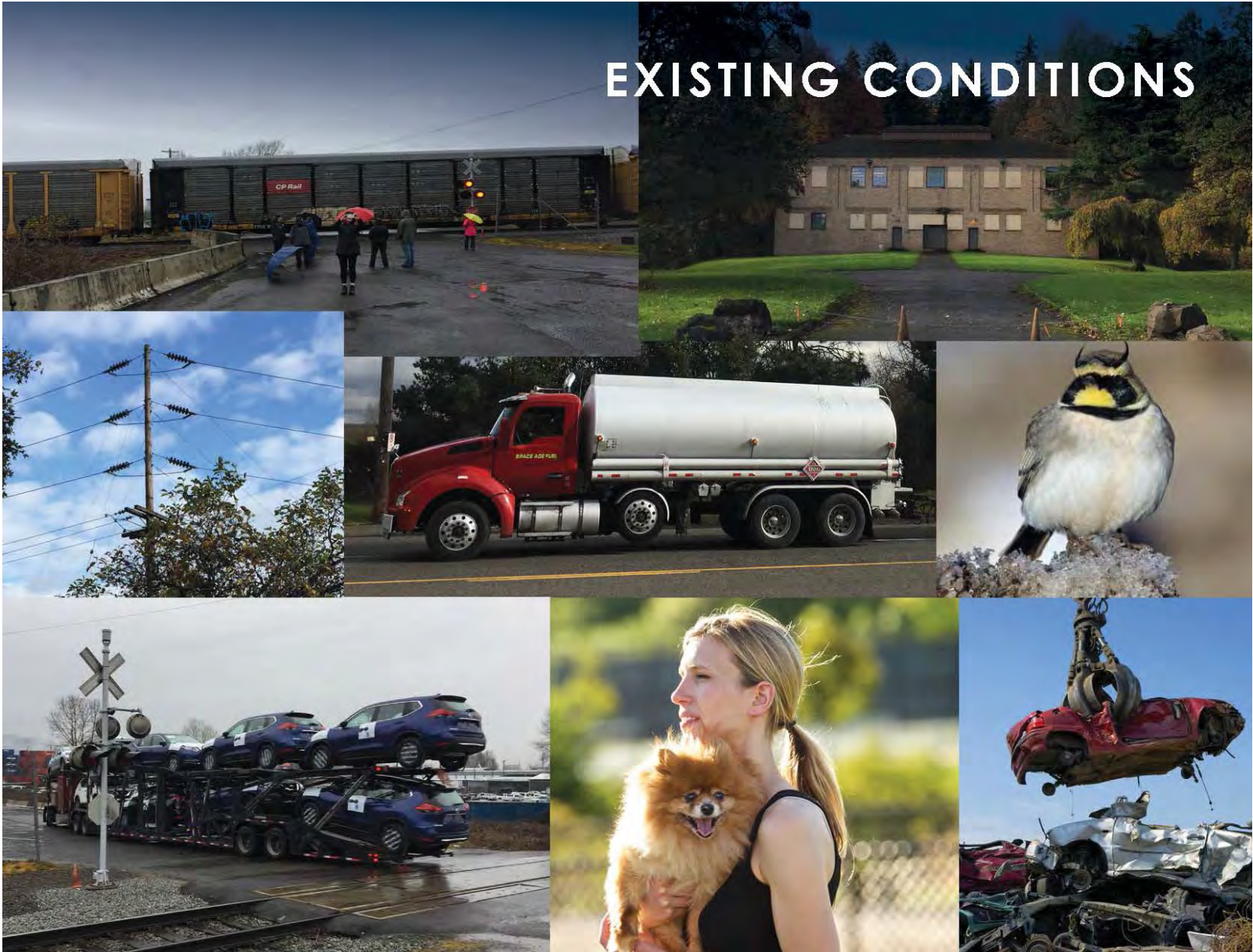
rail road crossing

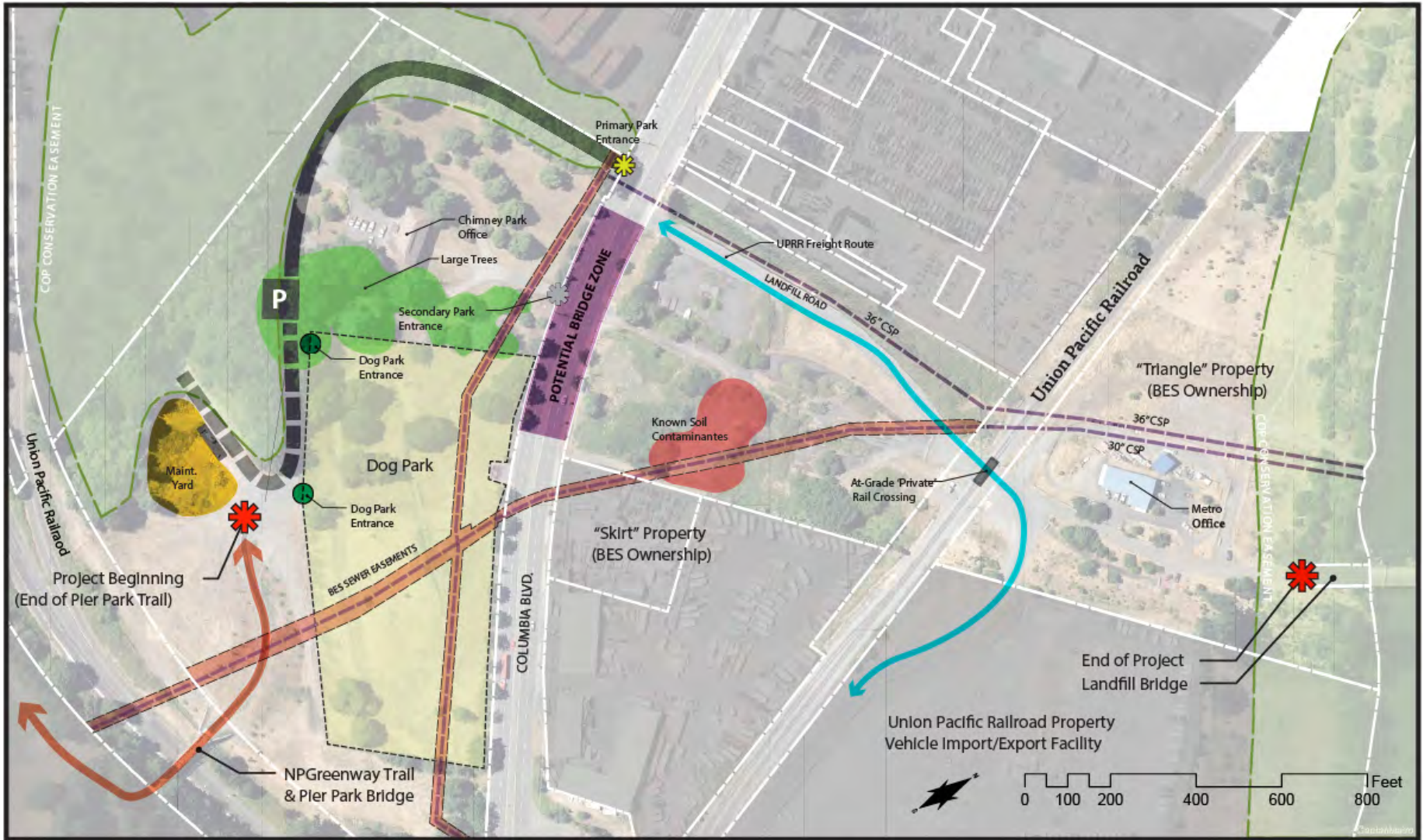


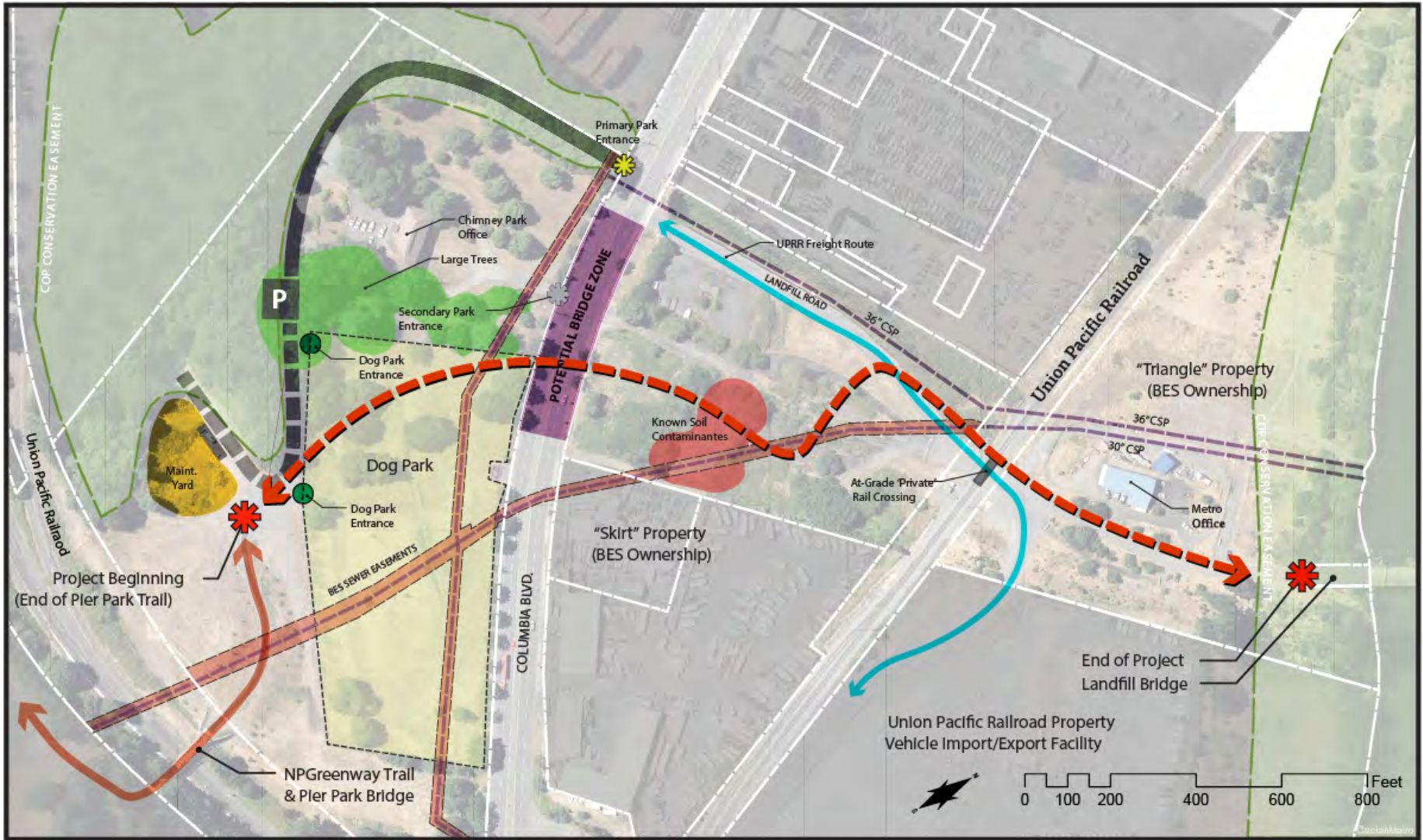


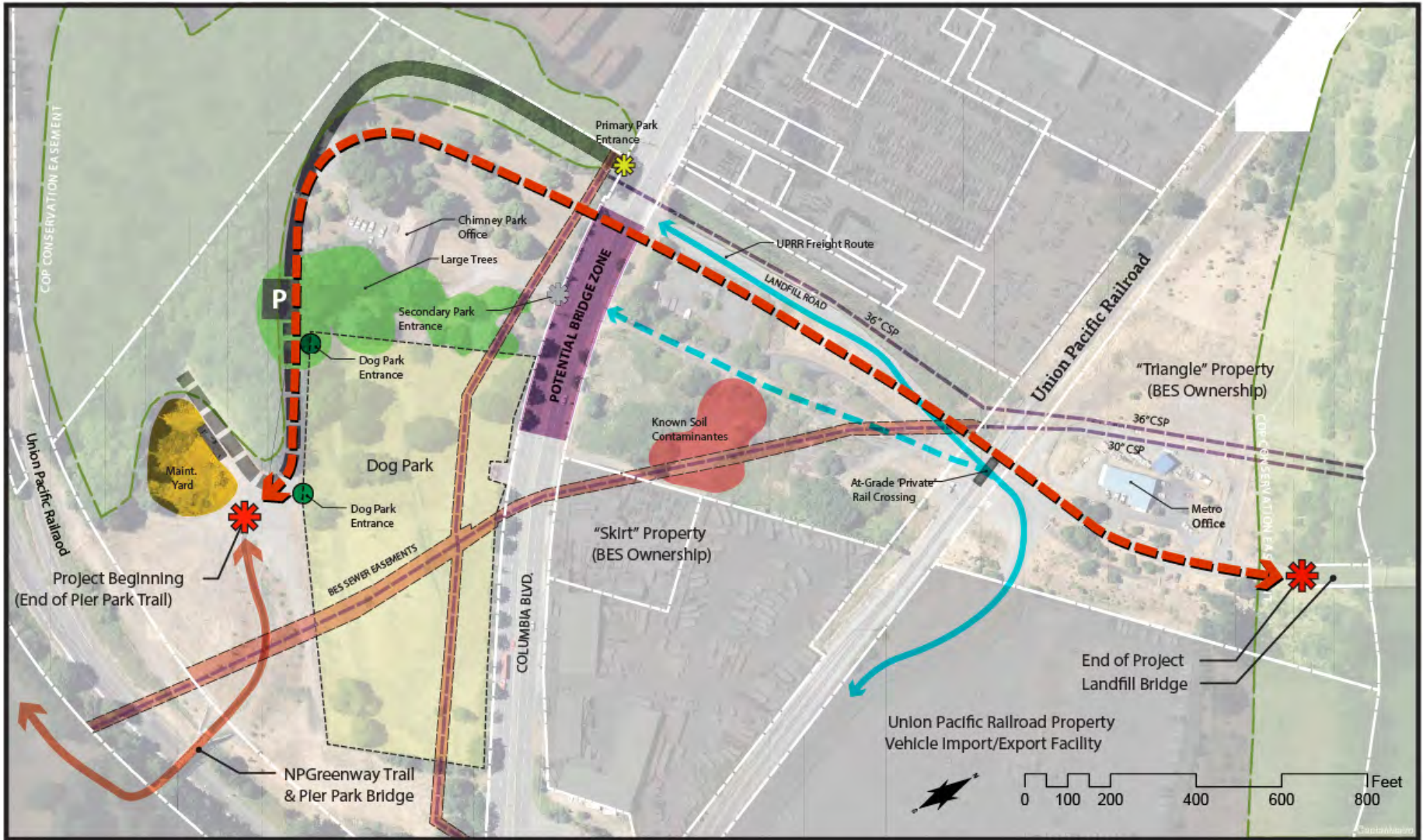
Data Resource Center/Metro

EXISTING CONDITIONS

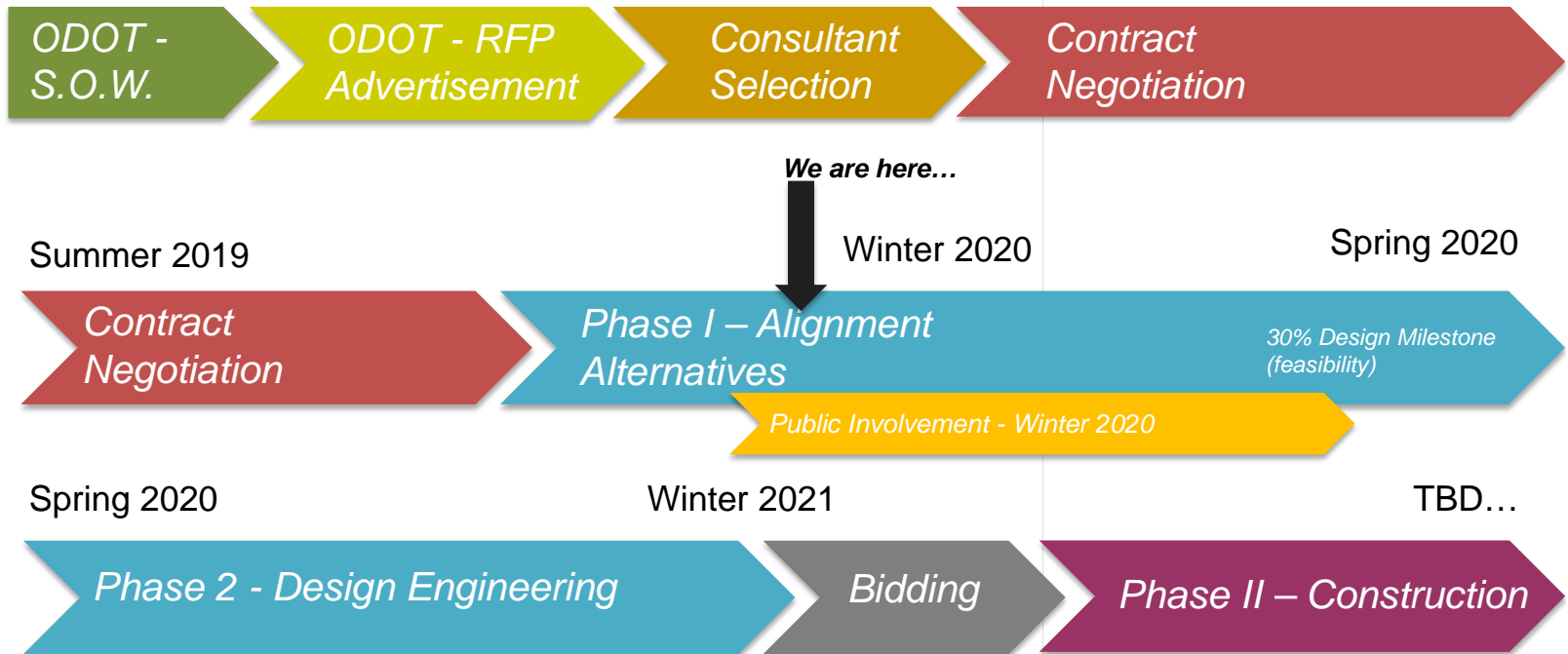








Columbia Blvd. Bridge DRAFT Schedule



St. Johns Prairie Trail

- Project planning, design and construction to be a “staggered” with Columbia Blvd. Bridge (CBB) project coming after SJP Design and build.
- SJP Phase 1 - design & build trail from landfill bridge to viewpoint & *10% design of N. Slough Bridge*
- SJP Phase 2 –Trail & N. Slough Bridge (*NPGreenway eligible for Metro Bond*)

Attachment 1



St. Johns Trail Prairie DRAFT Schedule



**Schedule likely to change*





Questions?

Bridge Over Columbia Blvd Stakeholder Interview

1. Tell us about your organization and your interest and involvement in the Bridge?
2. Do you have any expectations for the bridge? What are your assumptions?
3. Do you have an expectation in the role you would play in this process?
4. We anticipate that there may be significant impacts to the park in order to build this bridge (construction and staging, tree removal, access to the park and off-leash area etc. – we cannot predict everything, but know there will be impacts) – do you have advice for us on how to proceed?
5. What else do we need to know? What questions are we not asking? Who else should we talk to?
6. Thank you for your time, if you have further questions or comments please contact Elizabeth Kennedy-Wong at elizabeth.kennedy-wong@portlandoregon.gov or 503-823-5113

Attachment 2

Bridge Over Columbia Blvd
Stakeholder Interviews
Questions and tracking

Stakeholder Group:

Date:

Attendees:

Staff Presenter:

Notetaker:

Contact Person and Information for follow-up:

1. Tell us about your organization and your interest and involvement in the Bridge?
2. Do you have any expectations for the bridge? What are your assumptions?
3. Do you have an expectation in the role you would play in this process?
4. We anticipate that there may be significant impacts to the park in order to build this bridge (construction and staging, tree removal, access to the park and off-leash area etc. – we cannot predict everything, but know there will be impacts) – do you have advice for us on how to proceed?
5. What else do we need to know? What questions are we not asking? Who else should we talk to?
6. Thank you for your time, if you have further questions or comments please contact Elizabeth Kennedy-Wong at elizabeth.kennedy-wong@portlandoregon.gov or 503-823-5113