

## Council work session agenda

---

**Tuesday, April 21, 2020**

**2:00 PM**

**<https://zoom.us/j/471155552> or  
**877-853-5257 (toll free)****

---

Please note: To limit the spread of COVID-19, Metro Regional Center is now closed to the public.

This work session will be held electronically. You can join the meeting on your computer or other device by using this link: <https://zoom.us/j/471155552> or by calling 877-853-5257 (toll free).

If you wish to attend the meeting, but do not have the ability to attend by phone or computer, please contact the Legislative Coordinator at least 24 hours before the noticed meeting time by phone at 503-797-1916 or email at [legislativecoordinator@oregonmetro.gov](mailto:legislativecoordinator@oregonmetro.gov).

### **2:00 Call to Order and Roll Call**

#### **Work Session Topics:**

2:05 Regional Barometer Demo [20-5386](#)

Presenter(s): Andrew Scott, Metro  
Cary Stacey, Metro

Attachments: [Work Session Worksheet](#)  
[Regional Barometer Summary](#)  
[Regional Barometer Phase 1 Measures](#)  
[Regional Barometer One-Pager](#)

**2:35 Budget Update**

**2:45 Chief Operating Officer Communication**

**2:50 Councilor Communication**

**3:00 Adjourn**

# Metro respects civil rights

Metro fully complies with Title VI of the Civil Rights Act of 1964 and related statutes that ban discrimination. If any person believes they have been discriminated against regarding the receipt of benefits or services because of race, color, national origin, sex, age or disability, they have the right to file a complaint with Metro. For information on Metro's civil rights program, or to obtain a discrimination complaint form, visit [www.oregonmetro.gov/civilrights](http://www.oregonmetro.gov/civilrights) or call 503-797-1536. Metro provides services or accommodations upon request to persons with disabilities and people who need an interpreter at public meetings. If you need a sign language interpreter, communication aid or language assistance, call 503-797-1700 or TDD/TTY 503-797-1804 (8 a.m. to 5 p.m. weekdays) 5 business days before the meeting. All Metro meetings are wheelchair accessible. For up-to-date public transportation information, visit TriMet's website at [www.trimet.org](http://www.trimet.org).

### Thông báo về sự Metro không kỳ thị của

Metro tôn trọng dân quyền. Muốn biết thêm thông tin về chương trình dân quyền của Metro, hoặc muốn lấy đơn khiếu nại về sự kỳ thị, xin xem trong [www.oregonmetro.gov/civilrights](http://www.oregonmetro.gov/civilrights). Nếu quý vị cần thông dịch viên ra dấu bằng tay, trợ giúp về tiếp xúc hay ngôn ngữ, xin gọi số 503-797-1700 (từ 8 giờ sáng đến 5 giờ chiều vào những ngày thường) trước buổi họp 5 ngày làm việc.

### Повідомлення Metro про заборону дискримінації

Metro з повагою ставиться до громадянських прав. Для отримання інформації про програму Metro із захисту громадянських прав або форми скарги про дискримінацію відвідайте сайт [www.oregonmetro.gov/civilrights](http://www.oregonmetro.gov/civilrights), або Якщо вам потрібен перекладач на зборах, для задоволення вашого запиту зателефонуйте за номером 503-797-1700 з 8.00 до 17.00 у робочі дні за п'ять робочих днів до зборів.

### Metro 的不歧視公告

尊重民權。欲瞭解Metro民權計畫的詳情，或獲取歧視投訴表，請瀏覽網站 [www.oregonmetro.gov/civilrights](http://www.oregonmetro.gov/civilrights)。如果您需要口譯方可參加公共會議，請在會議召開前5個營業日撥打503-797-1700（工作日上午8點至下午5點），以便我們滿足您的要求。

### Ogeysiiska takooris la'aanta ee Metro

Metro waxay ixtiraamtaa xuquuqda madaniga. Si aad u heshid macluumaad ku saabsan barnaamijka xuquuqda madaniga ee Metro, ama aad u heshid warqadda ka cabashada takoorista, booqo [www.oregonmetro.gov/civilrights](http://www.oregonmetro.gov/civilrights). Haddii aad u baahan tahay turjubaan si aad uga qaybqaadatid kullanka dadweynaha, wac 503-797-1700 (8 gallinka hore illaa 5 gallinka dambe maalaha shaqada) shan maalmo shaqo ka hor kullanka si loo tixgaliyo codsashadaada.

### Metro의 차별 금지 관련 통지서

Metro의 시민권 프로그램에 대한 정보 또는 차별 항의서 양식을 얻으려면, 또는 차별에 대한 불만을 신고 할 수 [www.oregonmetro.gov/civilrights](http://www.oregonmetro.gov/civilrights). 당신의 언어 지원이 필요한 경우, 회의에 앞서 5 영업일 (오후 5시 주중에 오전 8시) 503-797-1700를 호출합니다.

### Metro의差別禁止通知

Metroでは公民権を尊重しています。Metroの公民権プログラムに関する情報について、または差別苦情フォームを入手するには、[www.oregonmetro.gov/civilrights](http://www.oregonmetro.gov/civilrights)。までお電話ください。公開会議で言語通訳を必要とされる方は、Metroがご要請に対応できるよう、公開会議の5営業日前までに503-797-1700（平日午前8時～午後5時）までお電話ください。

**សេចក្តីជូនដំណឹងអំពីការមិនរើសអើងរបស់ Metro**  
ការគោរពសិទ្ធិពលរដ្ឋរបស់ ។ សំរាប់ព័ត៌មានអំពីកម្មវិធីសិទ្ធិពលរដ្ឋរបស់ Metro ឬដើម្បីទទួលបានកម្មប្រតិបត្តិការរើសអើងសម្រាប់សេចក្តីណែនាំរបស់ [www.oregonmetro.gov/civilrights](http://www.oregonmetro.gov/civilrights)។  
បើលោកអ្នកត្រូវការអ្នកបកប្រែភាសានៅពេលអង្គប្រជុំសាធារណៈ សូមទូរស័ព្ទមកលេខ 503-797-1700 (ម៉ោង 8 ព្រឹកដល់ម៉ោង 5 ល្ងាច ថ្ងៃធ្វើការ) ប្រាំពីរថ្ងៃ ថ្ងៃធ្វើការ មុនថ្ងៃប្រជុំដើម្បីអាចឲ្យគេសម្រួលតាមសំណើរបស់លោកអ្នក ។

### إشعار بعدم التمييز من Metro

تحتزم Metro الحقوق المدنية. للمزيد من المعلومات حول برنامج Metro للحقوق المدنية أو لإيداع شكوى ضد التمييز، يرجى زيارة الموقع الإلكتروني [www.oregonmetro.gov/civilrights](http://www.oregonmetro.gov/civilrights). إن كنت بحاجة إلى مساعدة في اللغة، يجب عليك الاتصال مقدماً برقم الهاتف 503-797-1700 (من الساعة 8 صباحاً حتى الساعة 5 مساءً، أيام الاثنين إلى الجمعة) قبل خمسة (5) أيام عمل من موعد الاجتماع.

### Paunawa ng Metro sa kawalan ng diskriminasyon

Iginagalang ng Metro ang mga karapatang sibil. Para sa impormasyon tungkol sa programa ng Metro sa mga karapatang sibil, o upang makakuha ng porma ng reklamo sa diskriminasyon, bisitahin ang [www.oregonmetro.gov/civilrights](http://www.oregonmetro.gov/civilrights). Kung kailangan ninyo ng interpreter ng wika sa isang pampublikong pulong, tumawag sa 503-797-1700 (8 a.m. hanggang 5 p.m. Lunes hanggang Biyernes) lima araw ng trabaho bago ang pulong upang mapagbigyan ang inyong kahilingan.

### Notificación de no discriminación de Metro

Metro respeta los derechos civiles. Para obtener información sobre el programa de derechos civiles de Metro o para obtener un formulario de reclamo por discriminación, ingrese a [www.oregonmetro.gov/civilrights](http://www.oregonmetro.gov/civilrights). Si necesita asistencia con el idioma, llame al 503-797-1700 (de 8:00 a. m. a 5:00 p. m. los días de semana) 5 días laborales antes de la asamblea.

### Уведомление о недопущении дискриминации от Metro

Metro уважает гражданские права. Узнать о программе Metro по соблюдению гражданских прав и получить форму жалобы о дискриминации можно на веб-сайте [www.oregonmetro.gov/civilrights](http://www.oregonmetro.gov/civilrights). Если вам нужен переводчик на общественном собрании, оставьте свой запрос, позвонив по номеру 503-797-1700 в рабочие дни с 8:00 до 17:00 и за пять рабочих дней до даты собрания.

### Avizul Metro privind nediscriminarea

Metro respectă drepturile civile. Pentru informații cu privire la programul Metro pentru drepturi civile sau pentru a obține un formular de reclamație împotriva discriminării, vizitați [www.oregonmetro.gov/civilrights](http://www.oregonmetro.gov/civilrights). Dacă aveți nevoie de un interpret de limbă la o ședință publică, sunați la 503-797-1700 (între orele 8 și 5, în timpul zilelor lucrătoare) cu cinci zile lucrătoare înainte de ședință, pentru a putea să vă răspunde în mod favorabil la cerere.

### Metro txoj kev ntxub ntxaug daim ntawv ceeb toom

Metro tributes cai. Rau cov lus qhia txog Metro txoj cai kev pab, los yog kom sau ib daim ntawv tsis txaus siab, mus saib [www.oregonmetro.gov/civilrights](http://www.oregonmetro.gov/civilrights). Yog hais tias koj xav tau lus kev pab, hu rau 503-797-1700 (8 teev sawv ntxov txog 5 teev tsaus ntuj weekdays) 5 hnub ua hauj lwm ua ntej ntawm lub rooj sib tham.

**Regional Barometer Demo**

*Work Session Topics*

Metro Council Work Session  
Tuesday, April 21, 2020

## REGIONAL BAROMETER DEMO

---

Date: February 28, 2020  
Department: Office of the COO  
Meeting Date: April 21, 2020

Presenter(s) (if applicable): Deputy COO  
Andrew Scott, Cary Stacey  
Length: 30 mins

Prepared by: Cary Stacey; 503-797-1619;  
[cary.stacey@oregonmetro.gov](mailto:cary.stacey@oregonmetro.gov)

---

### **ISSUE STATEMENT**

The Regional Barometer is an online tool that publicly provides information on how the region is doing relative to Metro's Six Desired Outcomes: transportation, economy, ecosystems, climate, communities and equity. It is part of a performance management system called By the Numbers, which will assess and communicate how Metro programs support those outcomes.

The purpose of the Regional Barometer is to improve Metro decision-making through accountability, transparency and results. This project is a Council priority.

### **ACTION REQUESTED**

The Regional Barometer is scheduled to go public at the end of March 2020. The purpose of this work session item is to give a demonstration of the site, share feedback themes from external stakeholders and provide key messages to use upon site rollout.

### **IDENTIFIED POLICY OUTCOMES, POLICY QUESTION(S), POLICY OPTIONS FOR COUNCIL TO CONSIDER**

The Regional Barometer will continue to evolve following its launch. Metro Council could consider what enhancements would help the Barometer better:

- Measure Metro's long term program and policy performance
- Support trust building with communities by increasing transparency of Metro's work, and demonstrating Metro's commitment to keeping accountable to our regional goals
- Support benchmarking in relation to U.S. and international cities, for many of our regional outcomes, including livability and community vibrancy.
- Guide investments in robust climate, equity and livability data
- Provide resources to jurisdictions, community organizations and public audiences to assist in data-driven policymaking

### **STAFF RECOMMENDATIONS**

N/A

### **STRATEGIC CONTEXT & FRAMING COUNCIL DISCUSSION**

The Regional Barometer will:

- **Promote accountability and transparency** for Metro and our programs.
- **Provide a service** to users who can access critical data all in one place.
- **Serve as a policy and communications tool** for Metro staff and elected officials through which to ground policy conversations, set the stage for key investments, and build shared understanding.
- **Support a coordinated data strategy** to reduce duplicative efforts and investments, fill regional data gaps and solidify Metro's role as a regional data hub.

The Regional Barometer makes progress towards Metro's regional goals by:

- Increasing capacity of Metro's staff and supporting impactful work
- Increasing capacity of community-based organizations and community leaders to advocate for and target investments and services relative to their goals
- Building public trust and solidifying Metro's mandate
- Increasing data-driven policymaking region-wide
- Expanding regional data capacity and accessibility

## **BACKGROUND**

- Metro has undertaken two previous efforts to define and measure our six desired outcomes. The first effort, a collaborative project with PSU, ended in the creation of the Greater Portland Pulse. The most recent effort, "MetroPulse," concluded after councilors responded to a first draft of the project with an expressed need for more granular data to support policy conversations.
- Metro Council indicated desire for continued work on this project. This recent effort, continuing where MetroPulse left off, is led by Cary Stacey in the office of the COO; the Research Center is building the web tool.
- This project folds in existing measures and data and broadens Metro's ability to serve regional data needs through acquisition of new data sets or collection of entirely new data.
- The first phase of this project launched in Fall 2018. The site, and the suite of measures used, will be iterative with the intent to engage with local leaders and communities more broadly in the next phase of development.
- Regional Barometer users will be able to view easy-to-understand facts and figures with accompanying narratives; access links to supplemental information such as relevant strategies, research and reports; and download data for additional analysis.
- Phase 2 of this project, to launch later this year, will involve a process to set targets, identify benchmarks and develop meta-indicators (e.g. providing a weighted score to each of the six outcomes).

## **ATTACHMENTS**

Regional Barometer summary

Regional Barometer Phase 1 Measures

Regional Barometer one-pager

Is legislation required for Council action? No

- What other materials are you presenting today? Tour of the site via Chrome web browser

## Performance management project | Regional Barometer

The Regional Barometer is an online tool that publicly provides information on how the region is doing relative to Metro's Six Desired Outcomes: transportation, economy, ecosystems, climate, communities and equity. It is part of a performance management system called By the Numbers, which will assess and communicate how Metro programs support those outcomes.

Regional Barometer users will be able to view easy-to-understand facts and figures with accompanying narratives; access links to supplemental information such as relevant strategies, research and reports; and download data for additional analysis.

### Project purpose

Improve Metro decision-making through accountability, transparency and results.

### The Regional Barometer will:

- **Promote accountability and transparency** for Metro and our programs.
- **Provide a service** to users who can access critical data all in one place.
- **Serve as a policy and communications tool** for Metro staff and elected officials through which to ground policy conversations, set the stage for key investments, and build shared understanding.
- **Support a coordinated data strategy** to reduce duplicative efforts and investments, fill regional data gaps and solidify Metro's role as a regional data hub.

### The Regional Barometer makes progress towards Metro's regional goals by:

- Increasing capacity of Metro's staff and supporting impactful work
- Increasing capacity of community-based organizations and community leaders to advocate for and target investments and services relative to their goals
- Building public trust and solidifying Metro's mandate
- Increasing data-driven policymaking region-wide
- Expanding regional data capacity and accessibility

### Success requires:

- Relevant, up-to-date and trusted data
- Usable and understandable tool
- Users see their priorities and needs reflected
- Effective program measurement tied to goals

### Project phases

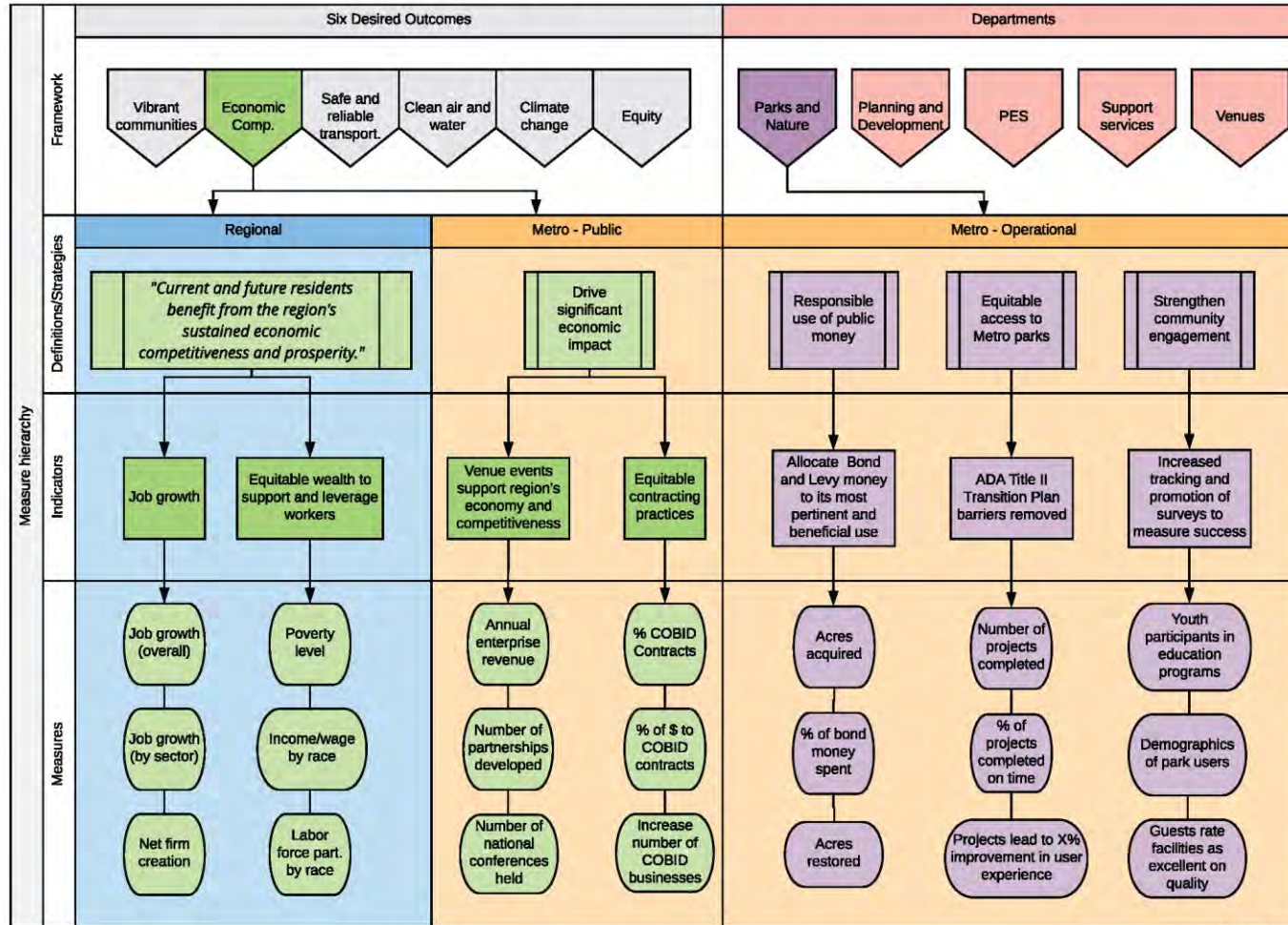
- Phase 1, By March 2020: Tool is made public with existing datasets, strategic data plan
- Phase 2, TBD: Develop composite indicators, performance targets and benchmarks; conduct robust community engagement; build out strategic data plan



# By the Numbers (sample metrics)

## Regional barometer

## Operational measures



v1.10.17.2018

## The Regional Barometer | Phase 1 Measures

### EQUITY

Economy and transportation	Climate and ecosystems	Communities
Change in median annual household income in 2017 dollars by race & ethnicity (graph)	National Air Toxic Assessment diesel particulate matter (map)	Change in population by race (map)
Additional income disparities by race and ethnicity (graph)	Impervious Surfaces (map)	Housing cost burden by race (graph)
Income inequality (map)	Tree canopy (map)	Homeownership by race (graph)
Change in unemployment rate by race & ethnicity (graph)	Environmental hazard potential (map)	Inventory of public affordable units (map)
Poverty level (map)		Juvenile recidivism (graph)
Crash map application (map)		Food insecurity (graph)
		Life expectancy at birth (map)
		Sexually transmitted infections by age, gender, and race (graph)
		Substance use among 11th graders (graph)
		Kindergarten assessment (map)
		High school graduation rate (map)
		High school discipline rates (map)
		Educational attainment (map)
		Staffing level per student (map)
		Diversity of teachers (map)

### COMMUNITIES

Recreation and community engagement	Housing	Land Use
Voter participation (graph)	Houselessness rate per 10,000 population (graph)	Planned transportation investment in regional centers and corridors (At a glance)
Arts and culture establishments (graph)	Change in population by race (map)	Residential building permit activity (map)
Cultural and ethnic awareness nonprofits (graph)	Housing cost burden by race (graph)	Number of permits for missing middle-type housing (graph)
	Homeownership by race (graph)	Development that is infill or redevelopment (graph)
	Median home price (graph)	Sidewalk coverage (map)
	Median rents (graph)	Urban density and transit (map)
	Inventory of public affordable units (map)	Transportation investments in regional centers and corridors (map)



## The Regional Barometer | Phase 1 Measures

### COMMUNITIES (cont.)

Food	Education	Health
Food insecurity (graph)	Regional supply of child care (graph)	Life expectancy at birth (map)
Exposure to less healthy food (map)	Kindergarten assessment (map)	Uninsurance rate (graph)
Local food production (graph)	Standardized test scores (map)	Underinsurance rate (graph)
	High school graduation rate (map)	Exposure to less healthy food (map)
	Chronic absenteeism (map)	Accessibility to tobacco (map)
	High school discipline rates (map)	Substance use among 11th graders (graph)
	Educational attainment (map)	Suicide contemplation (graph)
	Staffing level per student (map)	Suicide rates (graph)
Crime and Criminal Justice	Diversity of teachers (map)	Sexually transmitted infections (graph)
Regional crime rate (graph)	Chronic absenteeism (map)	Youth immunizations (map)
Adult incarceration rates (graph)		Asthma rates (graph)
Adult recidivism rates (graph)		Heart attacks (graph)
Juvenile recidivism rates (graph)		Diabetes (graph)

### CLIMATE

Reducing our emissions: climate mitigation	Reducing the impacts: climate adaptation
Greenhouse gas emissions attributed to consumption (at a glance)	Average share of tree canopy (at a glance)
Emissions attributed to roadway vehicles in 2015 (at a glance)	Heat islands (map)
Share of trips by mode in 2017 (at a glance)	Canopy cover (map)
Consumption-based greenhouse gas emissions (graph)	Carbon sink (map)
Vehicle miles traveled per capita (graph)	Environmental hazard potential (map)
Percent of workers not driving alone to work (graph)	

## The Regional Barometer | Phase 1 Measures

### ENVIRONMENT

Air quality	Built environment	Healthy water and ecosystems
The share of measurements with unhealthy air quality for everyone in 2018 (at a glance)	Share of impervious surface in the region (at a glance)	Average share of tree canopy (at a glance)
The rate of asthma hospitalization per 10,000 people in 2017 (at a glance)	Regional average radon level (at a glance)	Average share of protected land (at a glance)
Unhealthy air quality (graph)	Impervious surfaces (map)	Water quality index (map)
Particulate matter (graph)	Potential lead paint share (map)	Tree canopy (map)
Ozone (graph)	Radon indicator (map)	Parks and protected lands (map)
National Air Toxic Assessment diesel particulate matter (map)		
Asthma rate (graph)		
National Air Toxic Assessment respiratory hazard index (map)		
Heating fuels (graph)		

### ECONOMY

Developability and market activity	Job activity	Economic justice and inclusion
Building permits issued in the region (At a glance)	New jobs created over a five-year period (at a glance)	Regional median household income in 2013-2017 (at a glance)
Property value per acre in the 4-county region (At a glance)	Percent of goods-producing jobs (at a glance)	Regional unemployment rate in 2013-2017 (at a glance)
Industrial and commercial square footage (map)	Ten-year increase in jobs (at a glance)	Change in median annual household income in 2017 dollars by race & ethnicity (graph)
Property value (map)	Percent increase in jobs by county (map)	Additional income disparities by race and ethnicity (graph)
Residential building permit activity (map)	Number of goods-producing jobs by county (graph)	Women and minority-owned businesses (graph)
	All jobs in Greater Portland by type (graph)	Change in unemployment rate by race & ethnicity (graph)
	Goods-producing jobs in the region (map)	Poverty level (map)
		Income inequality (map)

## The Regional Barometer | Phase 1 Measures

### TRANSPORTATION

Safety	Reliability	Mobility and access
Fatal crashes involving speed (at a glance)	Excessive delay (at a glance)	Average miles driven per person (at a glance)
Fatal crashes by mode (at a glance)	Travel time reliability (at a glance)	Ten-year change in daily miles driven per person (at a glance)
Fatalities resulting from traffic crashes in greater Portland (at a glance)	Bus service reliability over time (graph)	Households with access to frequent transit (graph)
Severe injuries resulting from traffic crashes in greater Portland (at a glance)	MAX service reliability over time (graph)	Vehicle miles traveled per capita (graph)
Crash map application (map)	LIFT service reliability over time (graph)	Total vehicle miles driven (graph)
Traffic deaths and severe injuries per capita (graph)	WES service reliability over time (graph)	Commutes driving alone to work (graph)
Traffic deaths and injuries by mode (graph)	Goods-producing jobs in the region (map)	Percent of workers not driving alone to work (graph)
Traffic death and severe injury rates (graph)		Number of rides on TriMet's bus and MAX services (graph)
		Number of rides on Trimet's LIFT and WES services (graph)
		Access to transit from households (graph)

# More than just data

Metro is launching a comprehensive trove of data about greater Portland in a free, easy to use tool — the Regional Barometer.

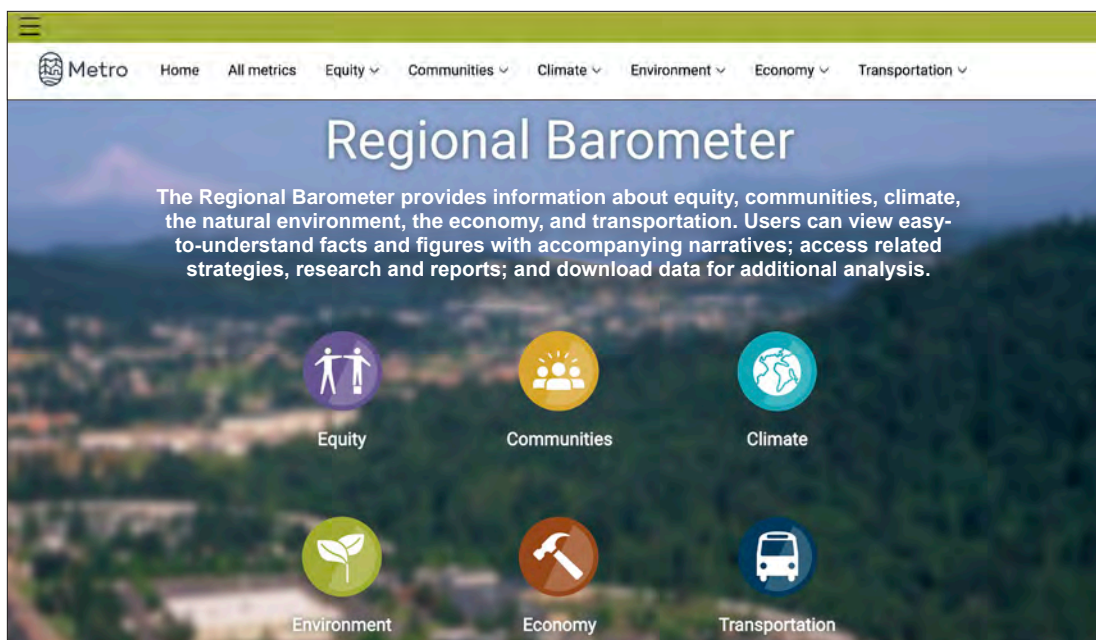
The Regional Barometer presents a rare opportunity to examine the greater Portland region through an interactive, easy to use website. With this open data platform, Metro is providing a valuable resource to give you access to metrics built from more than 350 sources of data, all at your fingertips in one convenient tool.

As we look toward the future of the region and how the Barometer can impact policy, we are engaged in a collaborative process with policymakers and the community. We want to ensure that the way we look at data to make plans for the region supports shared goals, creates value and has meaningful impact. Making data open and accessible is a service reflective of good government, and the Regional Barometer is transparency and accountability in action. By democratizing information, we can make better decisions together.

## What can the Barometer do for me?

Provide information about more than 120 region-wide metrics on racial equity, communities, climate, environment, economy, and transportation all in one place.

Give users the ability to download the 350+ data sets that inform the metrics and analyze those sets for their own needs



Users can view easy-to-understand facts and figures with accompanying narratives; access related strategies, research and reports; and download data for additional analysis.

# Building a platform that gets better, together

Consolidating 350+ data sets into one regional, open-data resource is a major undertaking. Our effort is rooted in listening to the community and working together to make data and the ways we use these metrics more responsive and accurate to the needs of our communities.

We recognize that data collection is constantly evolving and may not be perfect, which is why we've included context to help clarify trends and background, especially in relation to racial inequities and disparities. The Barometer is adaptive and evolving — it will help the region find out what we need to know more about by incorporating feedback, making improvements to metrics, and updating the platform as new data becomes available.

## Our vision is for the Regional Barometer to:

- Be easy to access, inclusive, and evolving
- Function as a key source of information for everyone
- Drive openness and transparency in government decision making
- Help identify and address gaps in data sets so that we can do better for each other

Check out the Barometer at:  
[oregonmetro.gov/regionalbarometer](http://oregonmetro.gov/regionalbarometer)

## Tips for using the Regional Barometer



### Use the buttons

to get to metrics within specific topics



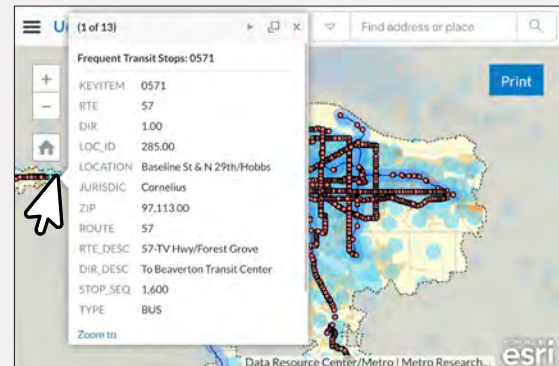
### The search bar

can help you find datasets for download

🔍 Enter a search or phrase then press Enter

### Click on maps

to open popup windows with more details



### Hover over interactive graphs

to for more details

