

Agenda



Metro

600 NE Grand Ave.
Portland, OR 97232-2736

Meeting: Smith and Bybee Wetlands Advisory Committee (SBAC)
Date: Tuesday, May 19, 2020
Time: 5:30 to 7:30 p.m.
Place: via Zoom

5:30 p.m.	Welcome and introductions	All
5:35 p.m.	Approve January 2020 meeting minutes	Troy Clark
5:40 p.m.	Bird monitoring at Smith and Bybee wetlands	Katy Weil
6:10 p.m.	Smith and Bybee planning projects updates	Allan Schmidt
6:40 p.m.	Wapato Jail/Helping Hands discussion	Troy Clark
6:50 p.m.	Conservation projects updates	Jonathan Soll
7:10 p.m.	Open discussion	All
7:20 p.m.	Goals and next meeting agenda	All
7:30 p.m.	Adjourn	

Upcoming SBAC meetings:

Tuesday, September 29, 2020 at Metro Regional Center

For agenda/schedule information, contact Annie Toledo at 503.813.7565 or annie.toledo@oregonmetro.gov

Metro's nondiscrimination notice

Metro respects civil rights. Metro fully complies with Title VI of the Civil Rights Act of 1964 that bans discrimination on the basis of race, color or national origin. For more information on Metro's civil rights program, or to obtain a Title VI complaint form, visit www.oregonmetro.gov/civilrights or call 503-797-1536.

Metro provides services or accommodations upon request to persons with disabilities and people who need an interpreter at public meetings.

All Metro meetings are wheelchair accessible. If you need a sign language interpreter, communication aid or language assistance, call 503-797-1536 or TDD/TTY 503-797-1804 (8 a.m. to 5 p.m. weekdays) 7 business days in advance of the meeting to accommodate your request. For up-to-date public transportation information, visit TriMet's website at www.trimet.org.

Meeting minutes

Smith and Bybee Advisory Committee

May 19, 2020

Committee members in attendance

Troy ClarkAudubon Society of Portland (Chair)
Carrie ButlerPort of Portland (Vice Chair)
Emily RothFriends of Smith and Bybee Lakes
Daryl HoutmanCity of Portland, Bureau of Environmental Services
Jonathan SollMetro, Parks and Nature
Jen LevySt. Johns Neighborhood Association
Max SamuelsonColumbia Slough Watershed Council
Pat Jewett40-Mile Loop Trust

Others in attendance

Allan SchmidtMetro, Parks and Nature
Katy WeilMetro, Parks and Nature
Annie ToledoMetro, Parks and Nature
Andrea BerkleyMetro, Parks and Nature
Susan BarthelFriends of Smith and Bybee Lakes

Committee members not in attendance

Patt OpdykeNorth Portland Neighbors

WELCOME

The January 2020 meeting minutes were approved.

WILDLIFE MONITORING AT SMITH AND BYBEE WETLANDS

Katy Weil, senior scientist at Metro, presented on wildlife monitoring efforts at Smith and Bybee wetlands and the St. Johns Prairie. Monitoring work supports site management, offering information to help inform restoration, water management, public access, and infrastructure decisions. Monitoring records at the site go back to the year 2000, with Katy recording them since 2006. Different types of monitoring has been done at the wetlands including bird, turtle, mammal, amphibian and fish surveys. *Attachment 1.*

Birds

Avian surveys account for the most monitoring data available. Due to the avian botulism outbreak in 2012 (~4,000 avian mortality rate), there is now annual monitoring from late August to early September to look for ill birds, specifically waterfowl. Avian point count surveys are performed within the St. Johns Prairie. Surveys in the ash-forested wetland have been conducted for several years in the past and can be done intermittently every few years unless restoration actions require annual survey work. The City of Portland has been conducting point council surveys on the south side of Smith Lake. A minimum of 3 years of monitoring is required in order to use the data recorded. However, 7 years of data is necessary if you are looking for trends. The Metro point count surveys at the St. John’s Prairie have been going on since 2005. Through the monitoring work,

Metro has been able to detect an abundance of different bird species, and trends of increased and decreased populations throughout the year. (See Attachment 1, slides 12-13 for bird monitoring statistics.) In addition to point count surveys, there have been area searches, and common nighthawk surveys performed at sunset. Area searches have included monitoring data for streaked horned lark presence (2015-2019). Despite restoration efforts this species has only been observed rarely, though one male was observed during breeding season in 2018.

Turtles

Turtle monitoring has been done at the site for a long time. A mark and recapture study was performed from 1998 to 2001. There have also been both visual encounter and nesting surveys for western painted turtles. Invasive turtle species such as red-eared sliders have been detected over time. Early data influenced a decision to move a former parking lot due to evidence which found that turtles were using the area for nesting purposes. Carrie Butler mentioned that there have been multiple observations of turtles using the multiuse path along Marine Drive. She and Emily also noted that there have been people picnicking within the nesting area, behind the fence off Marine Drive. Katy will be connecting with Carrie and the park operations staff to discern how the public is accessing that area and what park operation actions could be taken to reduce impacts on turtle nesting.

Amphibians

Through pond breeding surveys for egg masses, it's been found that the site does not provide good habitat for red-legged frogs, but it does provide limited habitat for chorus frogs. Bullfrogs have a strong presence on the site. Different species of terrestrial salamanders have been observed anecdotally.

Mammals

Katy performs beaver and nutria tracking surveys a few times a year. Monitoring activities also include recording beaver lodge and dam locations, dam notching for channel flow, reviewing wildlife camera footage, and also humane eradication of invasive nutria. Nutria eradication efforts have been extensive, with help from the USDA Wildlife Services Division. The USDA is onsite from September through the end of November. The plan yearly is to remove about 60 to 70 nutria from the site via euthanasia. Non-lead ammunition is used and the work is performed at night with a silencer in order to have less noise impact for the community.

PLANNING PROJECTS UPDATES

Allan Schmidt, senior planner at Metro, presented updates on the Columbia Blvd. Bridge and St. Johns Prairie Trail projects. He gave an overview of both projects and shared renderings of the proposed Columbia Blvd. Bridge and Chimney Park improvements. *Attachment 2.*

Columbia Blvd. Bridge

Portland Parks and Recreation will own and maintain the bridge, and is also leading the public engagement component of the project. A virtual open house for the Columbia Blvd. Bridge is currently online through June 1; the second outreach event for the bike/pedestrian bridge project.

Attachment 2 contains renderings of proposed designs for Chimney Park improvements and the Columbia Blvd. Bridge. More parking will be added at Chimney Park, but this will likely need to be revisited due to increased usage of the area. The project is moving slow, and is about 3 months

behind schedule. The bridge has been engineered to accommodate for increased freight traffic, but will not be crossing over the train tracks because it's not viable. Railroad traffic will not be rerouted, and the spur line will remain active.

St. Johns Prairie Trail

Site tours have been finished, the project has been kicked off and is currently in the trail mapping phase. The consultants (KPFF) are out there getting surveys, gathering maps and really diving into the CNRP; understanding land use issues. The team will be heading into the public outreach phase soon, but this will look a bit different because the constraints on the site.

The public engagement for the St. Johns Prairie Trail will be focused on wildlife-friendly art installations at the site, not trail alignments or engineered aspects. The CNRP that was developed specifically outlines potential locations for the future trail and overlook, so there is no room for the public to weigh in on that. The public outreach is being handled internally at Metro, with guidance from the Regional Arts and Culture Council. There will be many stakeholders engaged for this project, including large representation by communities of color. The communications team at Metro is interested in telling the story of Vanport through the art chosen to be at the site, although nothing has been finalized.

Once finished, the park operations team will have an increased presence on the site to deter unauthorized access such as the introduction of dogs, bicycles, etc. The boat launch near the Metro building on the south side of the slough will be removed. Public agencies and nonprofits will continue to have access to the slough for monitoring and management purposes through a different access point near the Metro driveway. The public will no longer have access to the slough from the site since there will be a gate installed.

BYBEE LAKES HOPE CENTER (FKA WAPATO JAIL) UPDATES

Raven Russell of Helping Hand Reentry Outreach Center sent an email update about the redevelopment progress of the former Wapato Jail. This was not discussed at the meeting. *See Attachment 3.*

CONSERVATION UPDATES

Jonathan Soll of Metro gave updates regarding progress towards the restoration goals identified in the CNRP. *Attachment 4.* Since we are ahead of schedule on restoration identified in the CNRP, we are delaying implementation of phase 4 of the prairie work and phase 3 of the Columbia sedge meadow restoration, in order to assess our approach and line up additional leverage for Metro resources. Ludwigia is still proving difficult to mitigate. Metro has been working on this for a very long time and nothing seems to be helping it. The Parks and Nature department is currently funding a research project on the issue to see if that can give any insight for management actions. In FY21, funding for restoration activities will continue to be equally from the Smith and Bybee Fund and the Parks and Nature levy, following through on Metro's pledge to leverage the Smith and Bybee Fund.

Troy Clark raised a question about the committee's recommendation to Metro leadership regarding the amount to be left in the fund at the end of the CNRP. The letter was sent last year and they have yet to receive a firm response. Jonathan Soll will be following up with management about this.

ACTION ITEMS

- Troy and Jonathan to follow up with Metro's conservation program director Dan Moeller regarding the SB Fund recommendations.

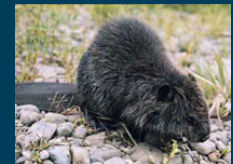
Meeting adjourned at 7:30 p.m.



Wildlife Monitoring Recent History

Smith and Bybee Wetlands
Advisory Committee
05-19-2020

Katy Weil
Metro – Conservation Program



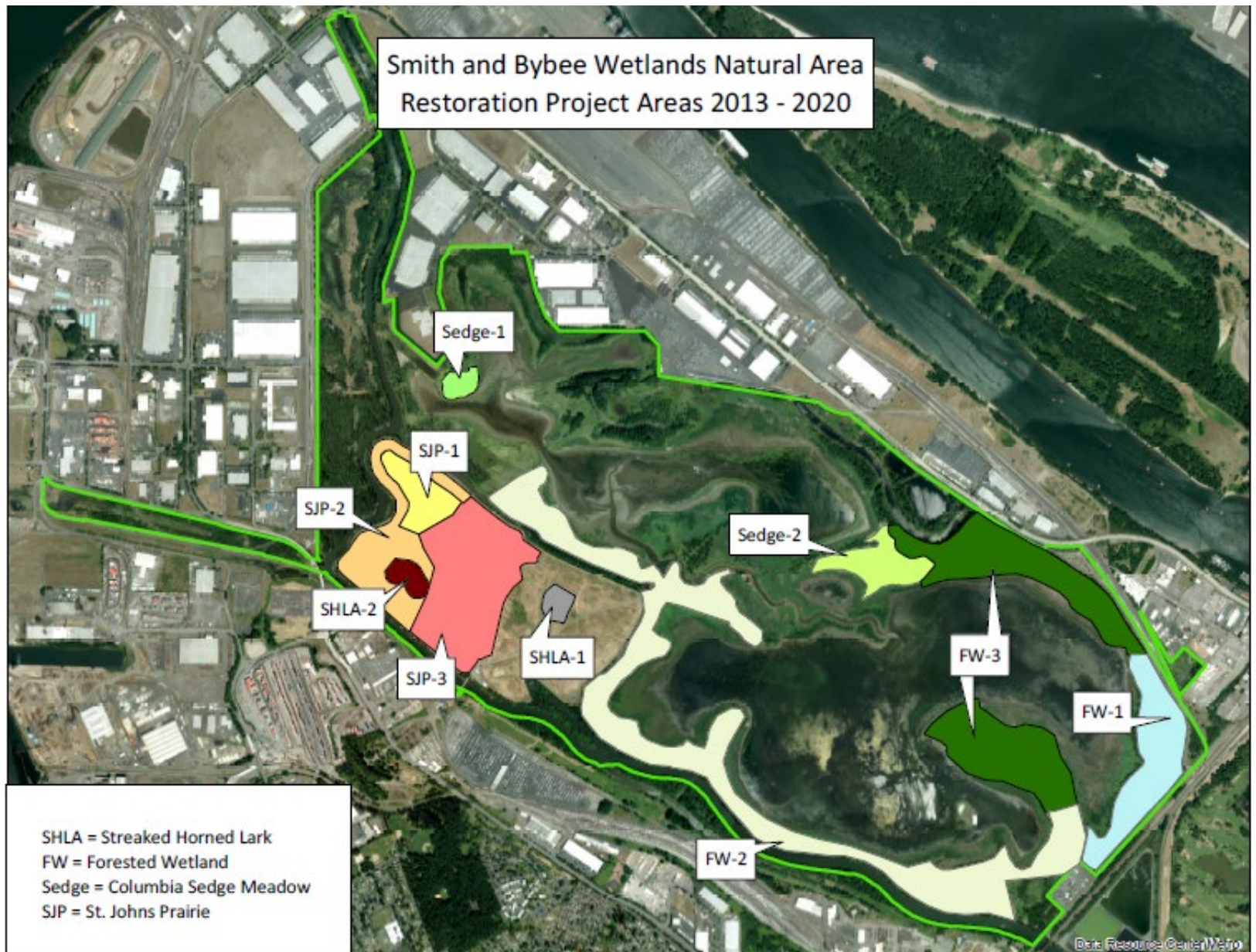
Types of Monitoring over Time

- **Birds:** point count surveys, area searches, etc
- **Turtles:** mark and recapture, VES, nesting survey
- **Amphibian:** pond breeding, terrestrial salamander
- **Mammal:** beaver and nutria assessments
- **Fish:** WCS passage monitoring

Monitoring: Where and Why?

- **Why not everywhere, every day?**
- **Use data collection efforts to inform and support site management needs**
- **Consideration within restoration project areas**
- ***Looking at the site and its varied project areas:***

ATTACHMENT 1



Monitoring: Turtles

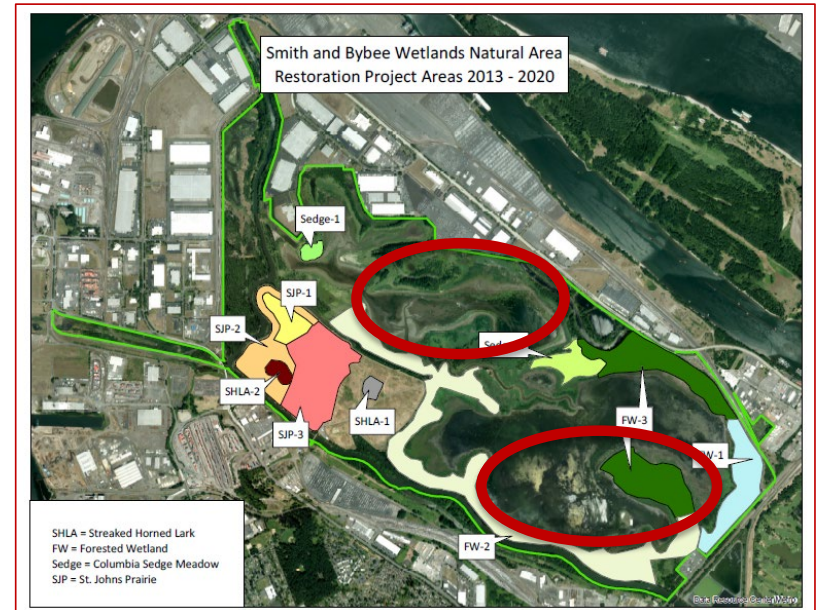
- mark and recapture study 1998 – 2001
- visual encounter surveys
- nesting surveys
- Western painted turtles, red-eared sliders



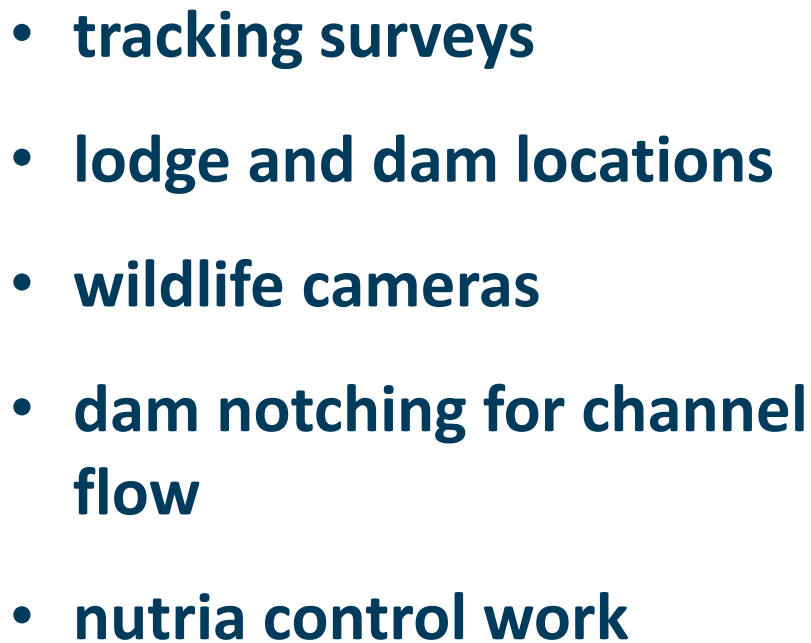
Data available in multiple formats and most can be shared

Monitoring: Amphibians

- egg mass surveys: 2006, 2012 *PSRE, AMMA, RAAU*
- terrestrial salamander – anecdotal *AMMA, PLVE, PLDU*
- bullfrog presence



Data available in multiple formats and can be shared



Data available in notes, tables, photos and maps - can be shared

Monitoring: Waterfowl – Avian Botulism

- **2012: 4000 mortality**
- **Ducks, geese, some shorebirds**
- **Species estimates submitted to USGS National Wildlife Health Lab**
- **Annual monitoring late August – early September**



Data available via tables, photos, and mapping

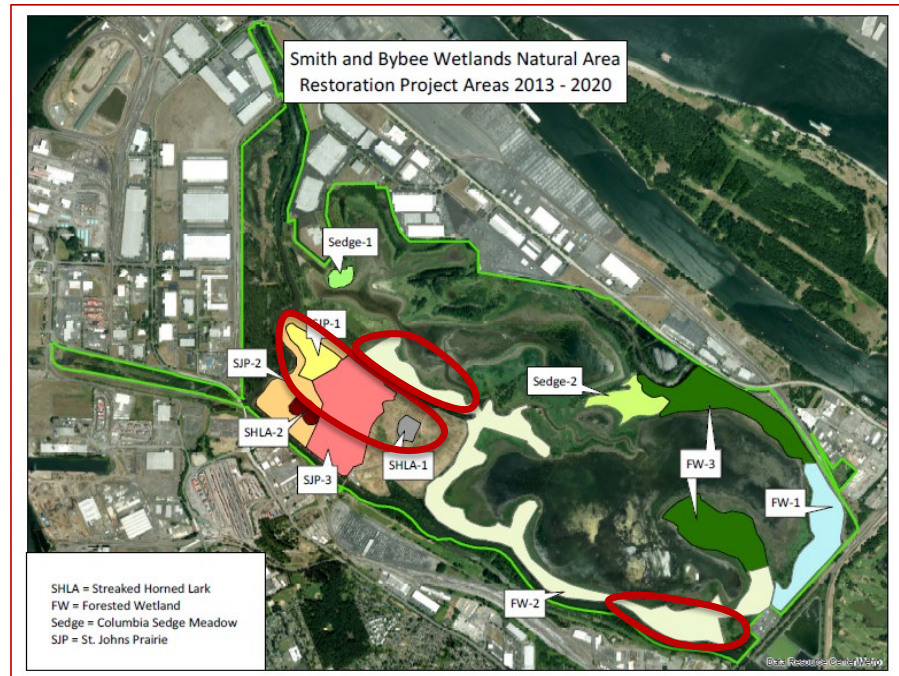
Monitoring: Avian

- annual point counts
- area searches
- mist netting
- weekly bird counts
- evening nighthawk survey



Monitoring: Avian Point Count Surveys

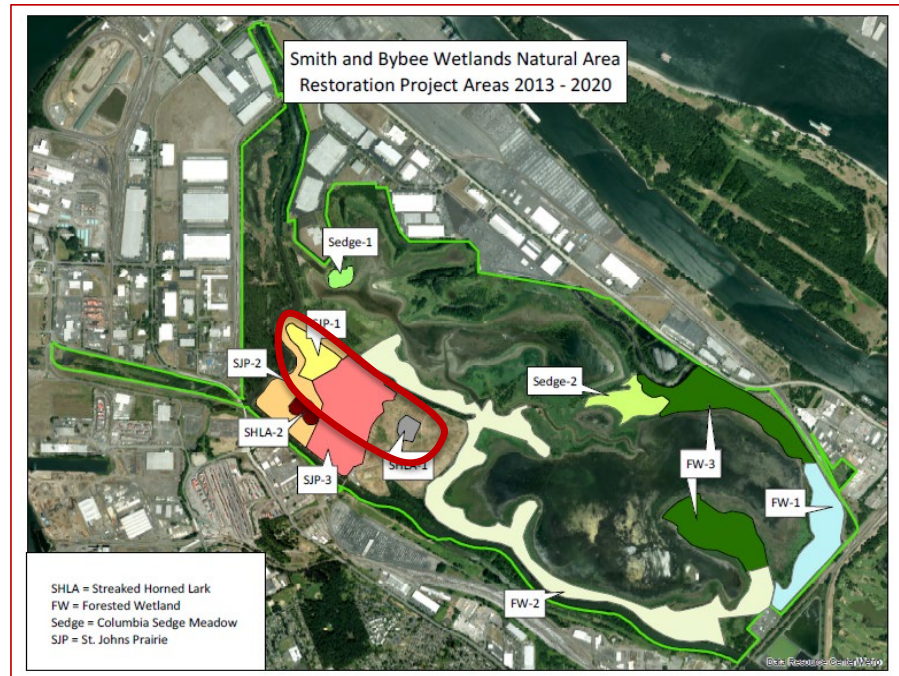
- Conducted by Metro and the city of Portland
- Metro data covers the past 15 years
- Point count stations established within:
 - The St. John's Prairie
 - the ash-forested wetland
 - South side of Smith Lake



Data available in Excel can be shared

Monitoring: Avian Point Count Surveys

- **St. John's Prairie: Five point count stations**
- **Monitored annually since 2005**
- **2018 first detection of WEME during breeding season**



Data available in Excel can be shared

Monitoring: Avian Point Count Surveys

- **St. John's Prairie point count data most abundant:**

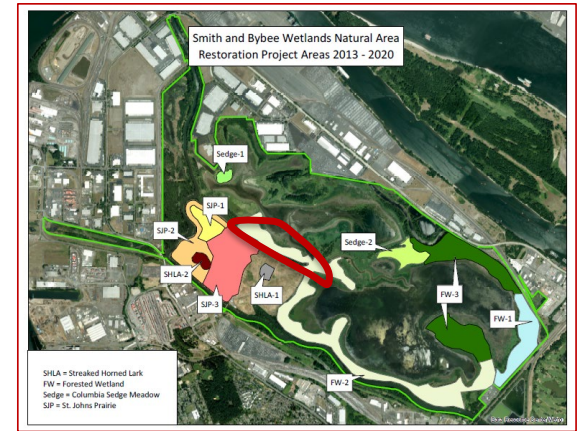
- Savannah sparrow
- Barn swallow
- American goldfinch
- Tree swallow
- Common yellowthroat
- European starling
- Song sparrow
- Cliff swallow
- Lazuli bunting

Common Name	Count	Relative Abundance
Savannah sparrow	63	4.20
Barn swallow	37	2.47
American goldfinch	32	2.13
Tree swallow	32	2.13
Common yellowthroat	28	1.87
European starling	19	1.27
Song sparrow	11	0.73
Cliff swallow	10	0.67
House finch	10	0.67
Killdeer	8	0.53
Cedar waxwing	7	0.47
American crow	6	0.40
Mallard	6	0.40
Lazuli bunting	5	0.33
American robin	7	0.47
Willow flycatcher	4	0.27
Bald eagle	3	0.20
Brown-headed cowbird	3	0.20
Canada goose	3	0.20
Great blue heron	3	0.20
Rufous hummingbird	3	0.20
Yellow-rumped warbler	3	0.20
American kestrel	2	0.13
Black-headed grosbeak	2	0.13
Vaux's swift	2	0.13
Great egret	1	0.07
Horned lark	1	0.07
Northern harrier	1	0.07
Spotted towhee	1	0.07
Western meadowlark	1	0.07
Western wood peewee	1	0.07

Data available in Excel can be shared

Monitoring: Avian Point Count Surveys

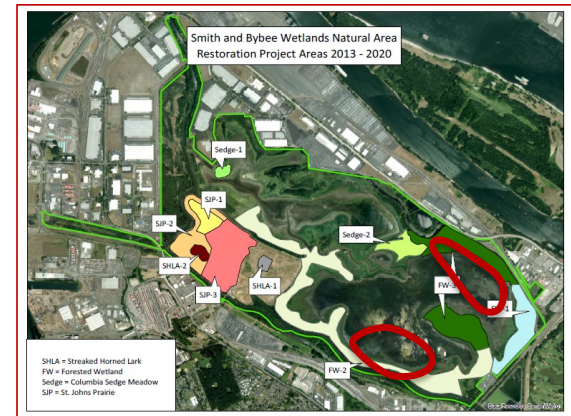
- **Ash-forested wetland point count data most abundant:**
 - House wren
 - Little willow flycatcher
 - Western wood peewee
 - American robin
 - Yellow warbler
 - Song sparrow
 - Pacific slope flycatcher



Data available in Excel and can be shared

Monitoring: Avian

- Phil Gaddis' mist netting project
- 2007 – 2010
- data submitted to the USGS Bird Banding Laboratory



Monitoring: Avian Area Searches

- Streaked horned lark surveys 2015-2019
- Weekly bird walks (Troy 😊)



Data available in Excel and can be shared

Monitoring: Avian Evening Surveys

- St. John's Prairie
State Wildlife Grant
- Common nighthawk
sunset surveys
- 2012, 2014, 2016,
2018, 2020

Data available and can be shared



Monitoring: Avian – Management Questions

Example: Lark and Meadowlark Habitat Plots

- **Vegetation management of primrose in lark plot 1: timing**
- **Western meadowlark nesting within the prairie: timing for treatments**



***For data and follow up questions, please contact:
Katy.Weil@oregonmetro.gov
503-970-9423***

oregonmetro.gov





Willamette Greenway Trail
BRIDGE OVER COLUMBIA BLVD.
Willamette Greenway Sendero
PUENTE SOBRE COLUMBIA BLVD.

MAY, 2020
MAYO, 2020



PORTLAND PARKS & RECREATION
Healthy Parks, Healthy Portland



Metro



WELCOME!

This is second of two community conversations about a new pedestrian and bike bridge over Columbia Boulevard. Due to the COVID-19 distancing measures, we have prepared this slide show to inform you about the project. Portland Parks & Recreation and Metro staff wish that we could meet face to face, but we are available for questions. The following slides will walk you through the proposed design, location, and impacts of the new bridge. Please send us your thoughts via the SurveyMonkey link at the end of the presentation.

This bridge connection has been in the works for many years and will fill a large gap in Portland's regional trail system. It will create an important connection along the North Portland Greenway, a 10.4-mile section of Willamette Greenway Trail that connects the Eastbank Esplanade to Kelley Point Park. The North Portland Greenway Trail is a key piece of the regional trail system which connects pedestrians and cyclists to their favorite places across the region. When the entire North Portland Greenway Trail is finally finished, it will connect the most distant point of north Portland to downtown.

BIENVENIDOS!

Esta es la segunda de dos conversaciones comunitarias sobre un nuevo puente peatonal y para bicicletas sobre Columbia Boulevard. Debido a las medidas de distanciamiento social por la COVID-19, preparamos esta presentación de diapositivas para mantenerlos informados sobre el proyecto. Todos en el Departamento de Parques y Recreación de Portland y Metro quisiéramos haber podido vernos cara a cara; pero sí estamos disponibles para responder sus preguntas. Las siguientes diapositivas explicarán paso a paso el diseño, ubicación e impacto del nuevo puente. Por favor, envíenos sus impresiones mediante el enlace de SurveyMonkey al final de la presentación.

La conexión del puente lleva varios años en curso y cerrará una brecha grande en el sistema regional de senderos de Portland. Establecerá una conexión importante a lo largo de North Portland Greenway, que es un tramo de 10.4 millas del sendero de Willamette Greenway que conecta Eastbank Esplanade con Kelley Point Park. El sendero de North Portland Greenway es una parte clave del sistema regional de senderos que conecta a peatones y ciclistas con sus sitios favoritos por toda la región. Cuando quede terminado finalmente, el sendero de North Portland Greenway, conectará el punto más distante del norte de Portland con el centro de la ciudad.

Willamette Greenway Trail
BRIDGE OVER COLUMBIA BLVD.
 Willamette Greenway Sendero
PUENTE SOBRE COLUMBIA BLVD.



PORTLAND PARKS & RECREATION
 Healthy Parks, Healthy Portland



MAY, 2020
 MAYO, 2020

Willamette Greenway Trail

BRIDGE OVER COLUMBIA BLVD.

Willamette Greenway Sendero

PUENTE SOBRE COLUMBIA BLVD.

oregonmetro.gov/trails

- 60 Existing Pedestrian Trail
- 30 Planned Pedestrian Trail
- 45 Existing Multi-use Trail
- 25 Planned Multi-use Trail
- 22 Existing On-Street Connection
- 44 Planned On-Street Connection
- 57 Conceptual Trail
- 70 Water Trail
- Existing Trail (non-regional)
- Parks and Natural Areas
- MAX Light Rail
- WES Commuter Rail
- Highways
- Major Roads

Regional Trails System Plan (A)

Mapa de senderos de la región

MAY, 2020
MAYO, 2020



PORTLAND PARKS & RECREATION

Healthy Parks. Healthy Portland



Metro



**Oregon
Department
of Transportation**



Willamette Greenway Trail
BRIDGE OVER COLUMBIA BLVD.
 Willamette Greenway Sendero
PUENTE SOBRE COLUMBIA BLVD.

PIER PARK CONTEXT MAP (B) **Mapa contextual de Pier Park**

MAY, 2020
 MAYO, 2020



Willamette Greenway Trail
BRIDGE OVER COLUMBIA BLVD.
Willamette Greenway Sendero
PUENTE SOBRE COLUMBIA BLVD.



PORTLAND PARKS & RECREATION
Healthy Parks, Healthy Portland



Metro

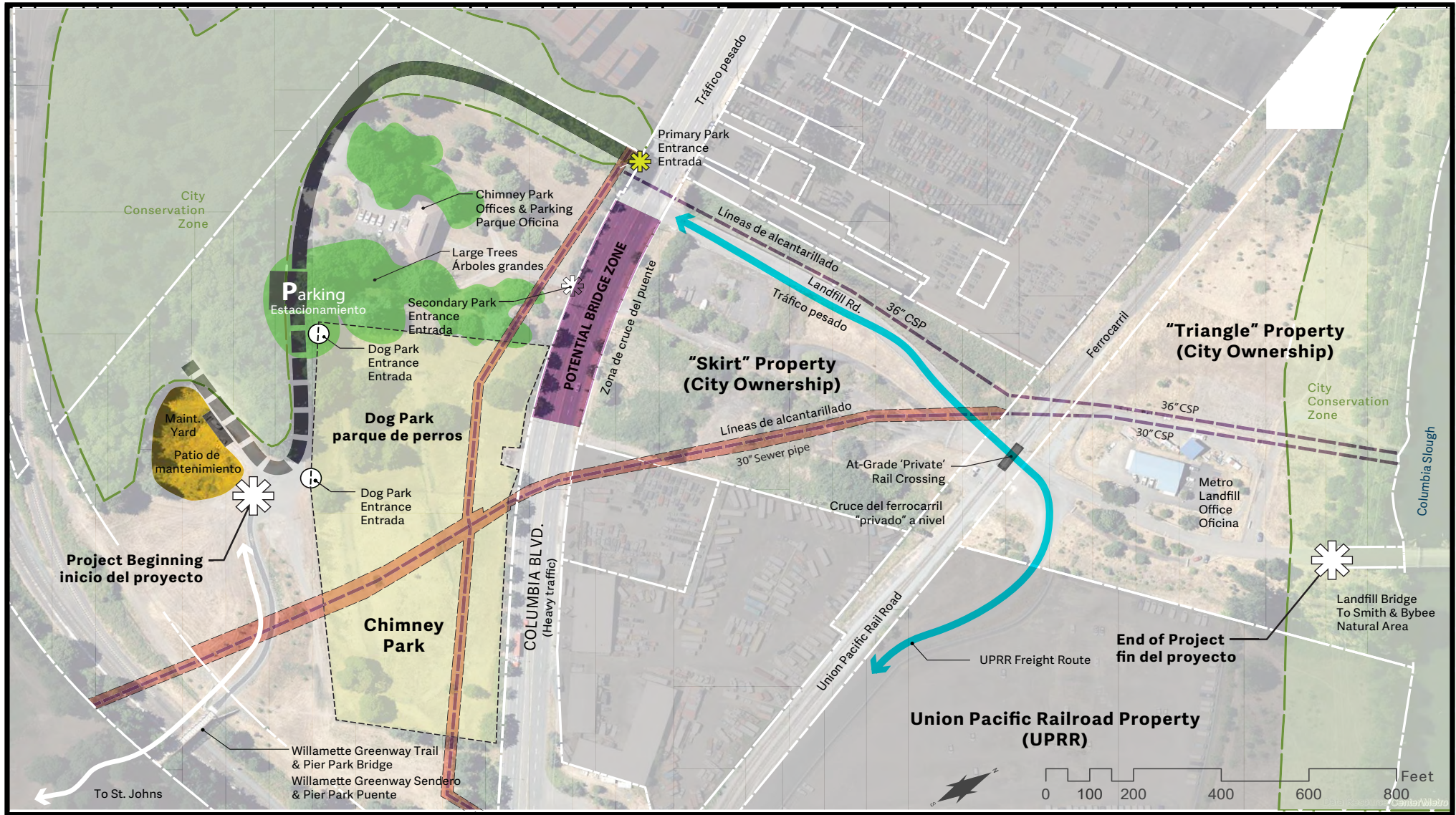


**Oregon
Department
of Transportation**

TRAIL CONTEXT MAP (C)

Mapa contextual de Senderos

MAY, 2020
MAYO, 2020



Willamette Greenway Trail
BRIDGE OVER COLUMBIA BLVD.
 Willamette Greenway Sendero
PUENTE SOBRE COLUMBIA BLVD.



PORTLAND PARKS & RECREATION
 Healthy Parks, Healthy Portland



Metro



**Oregon
 Department
 of Transportation**

CHIMNEY PARK CONTEXT MAP (D)

Mapa contextual de Chimney Park

MAY, 2020

MAYO, 2020

WHAT WE HEARD

FROM COMMUNITY MEETING #1 (DECEMBER 14, 2019)

Q: Will trees be removed?

A: Yes, some trees will be removed, but many more new trees will be planted as part of the project. Most of the trees being removed are in poor health and/or are considered invasive trees. The design team worked very hard to locate the bridge to minimize tree impacts.

Q: Will the dog area be impacted or moved?

A: NO! We know the dog area is very important to the community, so we did not support a bridge design that went through it. The proposed design will improve parking and access to the dog area. Dog park users may experience some temporary impacts during construction, and we will be able to share more about these impacts when we get closer to construction.

Q: Will the new bridge be accessible by all users?

A: YES! The new asphalt paved pedestrian and bike trail will be fully accessible under the Americans with Disabilities Act (ADA) allowing for the widest possible range of user experiences.

Q: Will the new trail be wide enough to accommodate both pedestrians and cyclists?

A: YES! The new paved pedestrian and bike trail will be 12 feet wide with one-foot gravel shoulders.

LO QUE ESCUCHAMOS

DURANTE LA REUNIÓN COMUNITARIA #1 (14 DE DICIEMBRE DE 2019)

P: ¿Se eliminarán árboles?

R: Sí, se quitarán algunos árboles, pero muchos más árboles nuevos serán sembrados como parte del proyecto. La mayoría de los árboles que se quitarán no gozan de buena salud y/o se consideran invasivos. El equipo de diseño se esforzó mucho para ubicar el puente de forma que el impacto a los árboles sea minimizado.

P: ¿Será afectada o reubicada la zona para perros?

R: ¡NO! Sabemos que la zona para perros es muy importante para la comunidad, así que no apoyamos ningún diseño del puente que la atravesaba. El diseño propuesto mejorará el estacionamiento y el acceso al área para perros. Es posible que durante la construcción los usuarios del parque para perros se vean afectados temporalmente y compartiremos más información al respecto cuando se acerque más la fecha de construcción.

P: ¿Será accesible para todos los usuarios el puente nuevo?

R: ¡SÍ! El nuevo sendero de asfalto para peatones y bicicletas será completamente accesible conforme a la Ley sobre Estadounidenses con Discapacidades (ADA, por sus siglas en inglés) y permitirá la gama más amplia de experiencias para usuarios.

P: ¿Será lo suficientemente ancho el nuevo sendero para dar cabida tanto a peatones como a ciclistas?

R: ¡SÍ! El nuevo sendero pavimentado para peatones y bicicletas medirá 12 pies de ancho y tendrá arcones de gravilla que medirán un pie.

Willamette Greenway Trail
BRIDGE OVER COLUMBIA BLVD.
Willamette Greenway Sendero
PUENTE SOBRE COLUMBIA BLVD.



PORTLAND PARKS & RECREATION
Healthy Parks, Healthy Portland

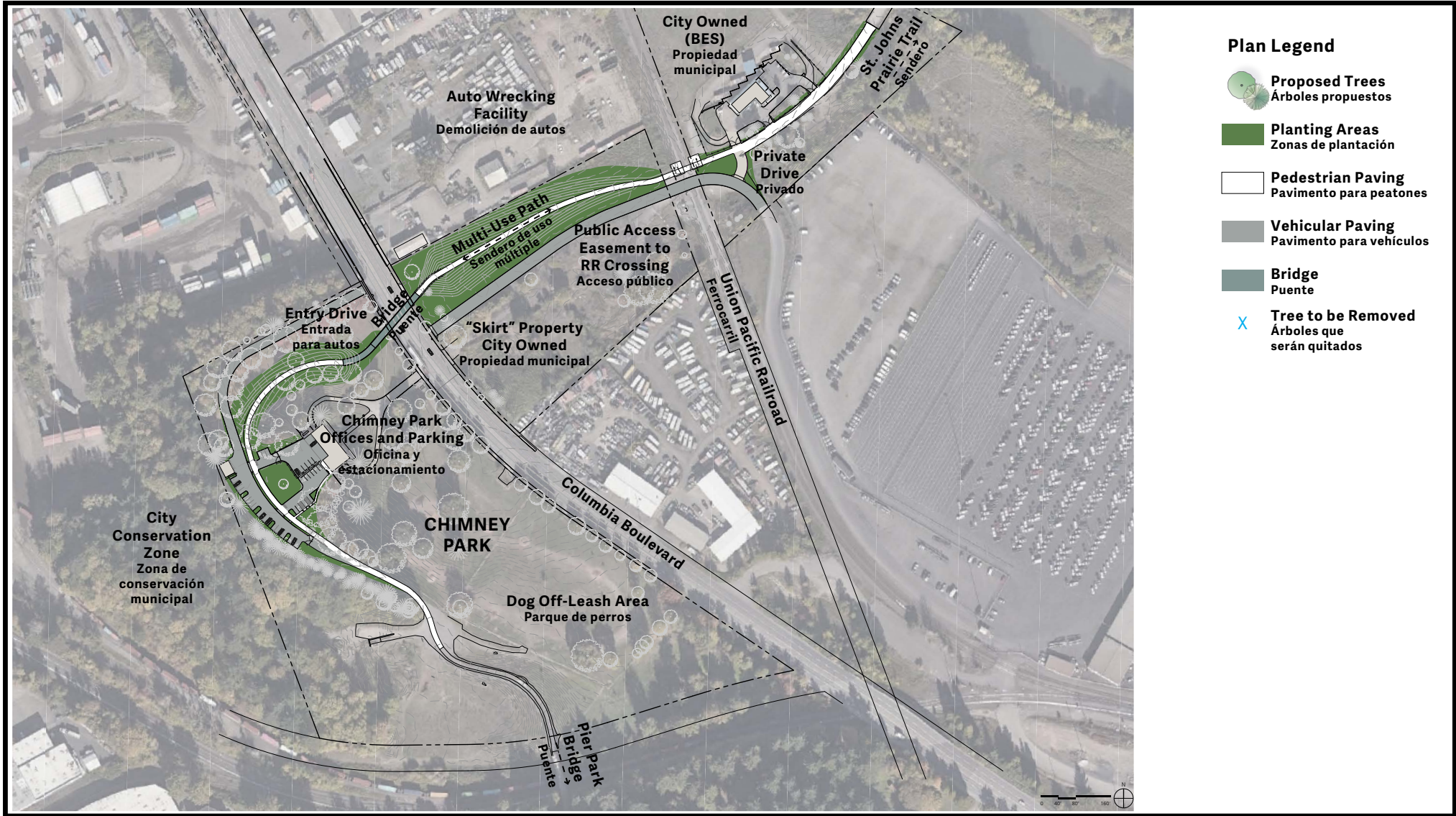


Metro

COMMUNITY MEETING #1 (E)
Reunión comunitaria #1

MAY, 2020
MAYO, 2020





Willamette Greenway Trail
BRIDGE OVER COLUMBIA BLVD.
Willamette Greenway Sendero
PUENTE SOBRE COLUMBIA BLVD.

PROJECT EXTENTS (F)

Alcances del proyecto

MAY, 2020
MAYO, 2020

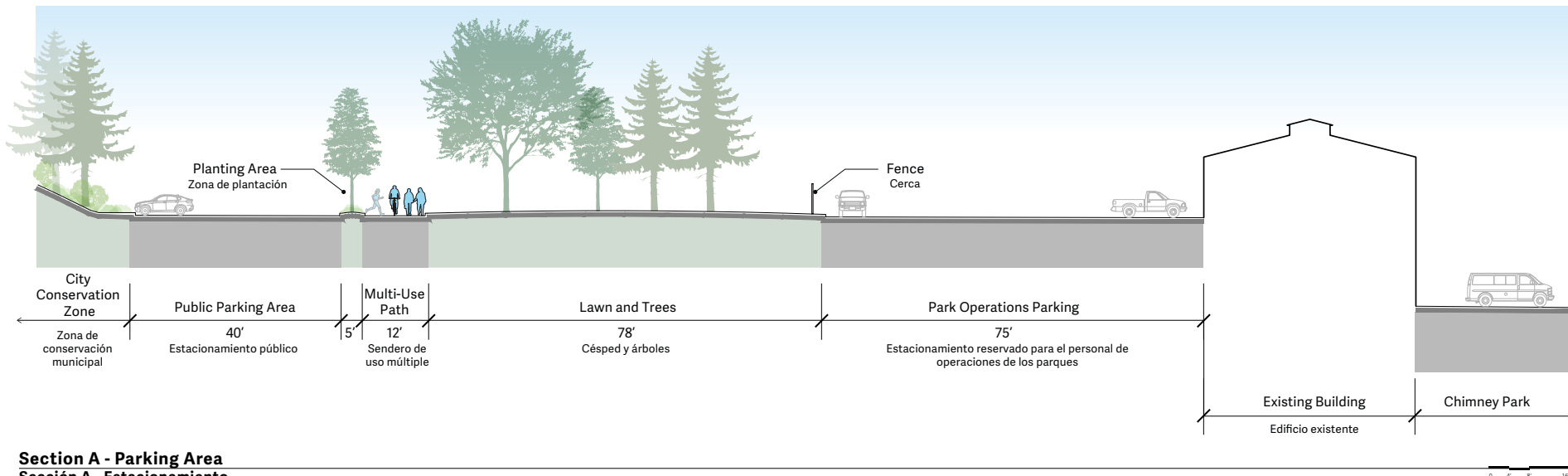


Willamette Greenway Trail
BRIDGE OVER COLUMBIA BLVD.
Willamette Greenway Sendero
PUENTE SOBRE COLUMBIA BLVD.

CHIMNEY PARK ENTRY (G)

Entrada al parque

MAY, 2020
MAYO, 2020



Willamette Greenway Trail
 BRIDGE OVER COLUMBIA BLVD.
 Willamette Greenway Sendero
 PUENTE SOBRE COLUMBIA BLVD.



PORTLAND PARKS & RECREATION
 Healthy Parks, Healthy Portland



Metro

CHIMNEY PARK ENTRY (H)

Entrada al parque

MAY, 2020
 MAYO, 2020



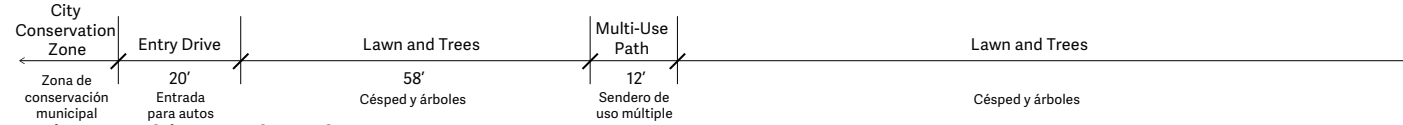
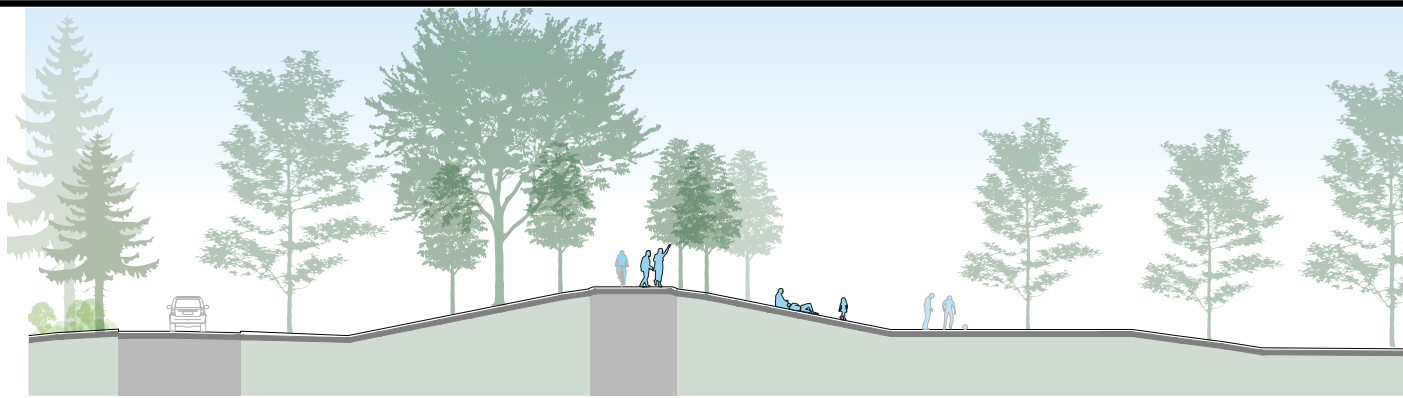


Willamette Greenway Trail
BRIDGE OVER COLUMBIA BLVD.
 Willamette Greenway Sendero
PUENTE SOBRE COLUMBIA BLVD.

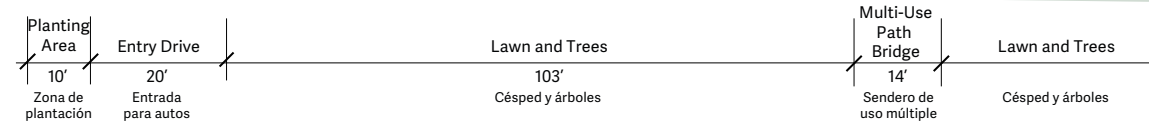
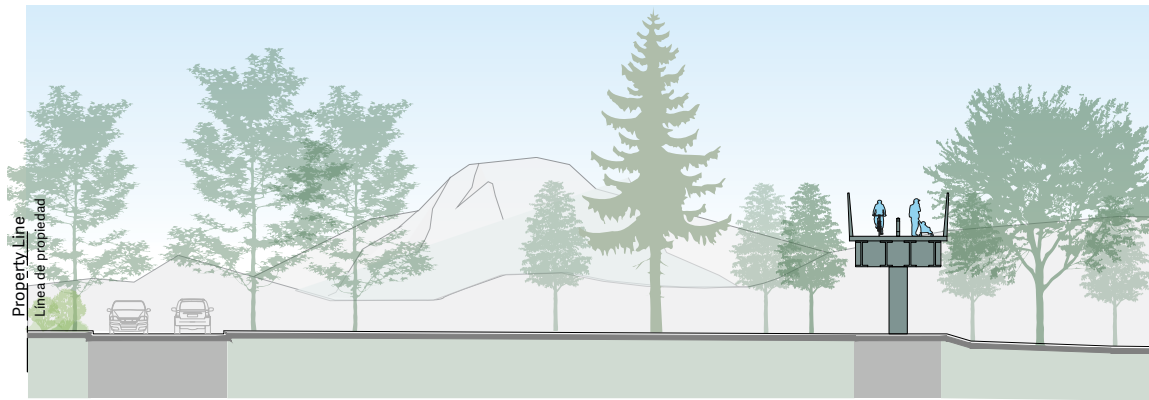
TRAIL ALIGNMENT (I)

Alineación del sendero

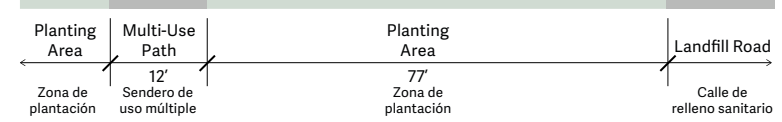
MAY, 2020
 MAYO, 2020



Section B - Multi-Use Path South
Sección B: sendero de uso múltiple sur



Section C - Bridge
Sección C: puente



Section D - Multi-Use Path North of Bridge
Sección D: sendero de uso múltiple al norte del puente

Willamette Greenway Trail
BRIDGE OVER COLUMBIA BLVD.
 Willamette Greenway Sendero
PUENTE SOBRE COLUMBIA BLVD.



PORTLAND PARKS & RECREATION
 Healthy Parks, Healthy Portland



Metro

TRAIL ALIGNMENT (J)

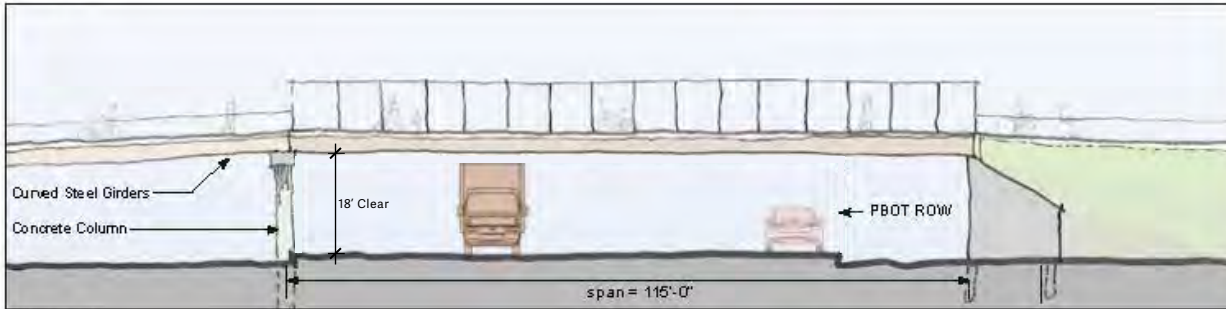
Alineación del sendero

MAY, 2020
 MAYO, 2020

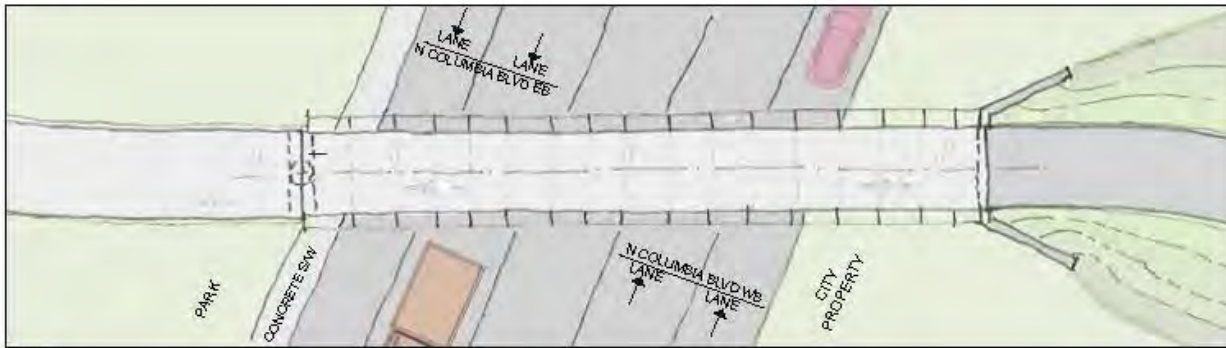




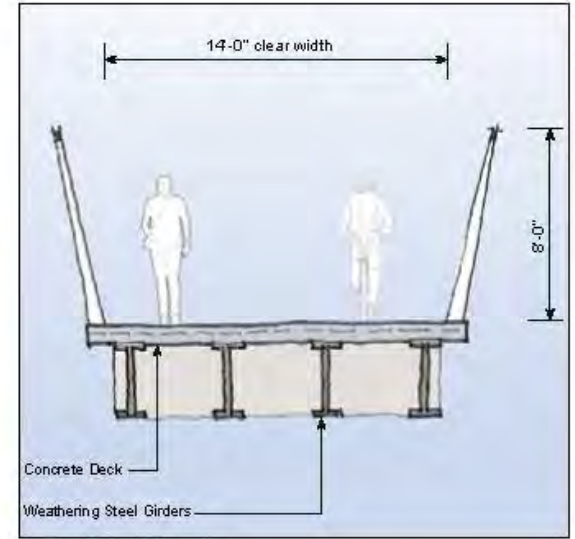
Perspective
no scale



Elevation
1" = 20'-0"



Plan
1" = 20'-0"



Typical Deck Section
1" = 5'-0"



Willamette Greenway Trail
BRIDGE OVER COLUMBIA BLVD.
Willamette Greenway Sendero
PUENTE SOBRE COLUMBIA BLVD.

PREFERRED BRIDGE TYPE (K)
Tipo de puente preferido

MAY, 2020
MAYO, 2020



Willamette Greenway Trail
BRIDGE OVER COLUMBIA BLVD.
Willamette Greenway Sendero
PUENTE SOBRE COLUMBIA BLVD.

PROJECTED SCHEDULE

Horario proyectado

MAY, 2020

THANK YOU!

PLEASE SEND US YOUR THOUGHTS – <https://www.surveymonkey.com/r/bridgeovercolumbia>

FOLLOW THE PROJECT – <https://www.portlandoregon.gov/parks/80088>

MORE ABOUT METRO AND THE ST. JOHNS PRAIRIE

<https://www.oregonmetro.gov/public-projects/st-johns-prairie-bike-and-pedestrian-trail>

<https://www.oregonmetro.gov/news/st-johns-prairie-blossoms-former-landfill>

<https://www.oregonmetro.gov/news/trash-treasure-seeding-change-st-johns-prairie>

¡GRACIAS!

POR FAVOR, COMPARTA SUS IDEAS CON NOSOTROS – <https://www.surveymonkey.com/r/bridgeovercolumbia>

SIGA EL PROGRESO DEL PROYECTO – <https://www.portlandoregon.gov/parks/80088>

MÁS INFORMACIÓN SOBRE METRO Y LA PRADERA DE ST. JOHNS

<https://www.oregonmetro.gov/public-projects/st-johns-prairie-bike-and-pedestrian-trail>

<https://www.oregonmetro.gov/news/st-johns-prairie-blossoms-former-landfill>

<https://www.oregonmetro.gov/news/trash-treasure-seeding-change-st-johns-prairie>

Willamette Greenway Trail
BRIDGE OVER COLUMBIA BLVD.
Willamette Greenway Sendero
PUENTE SOBRE COLUMBIA BLVD.



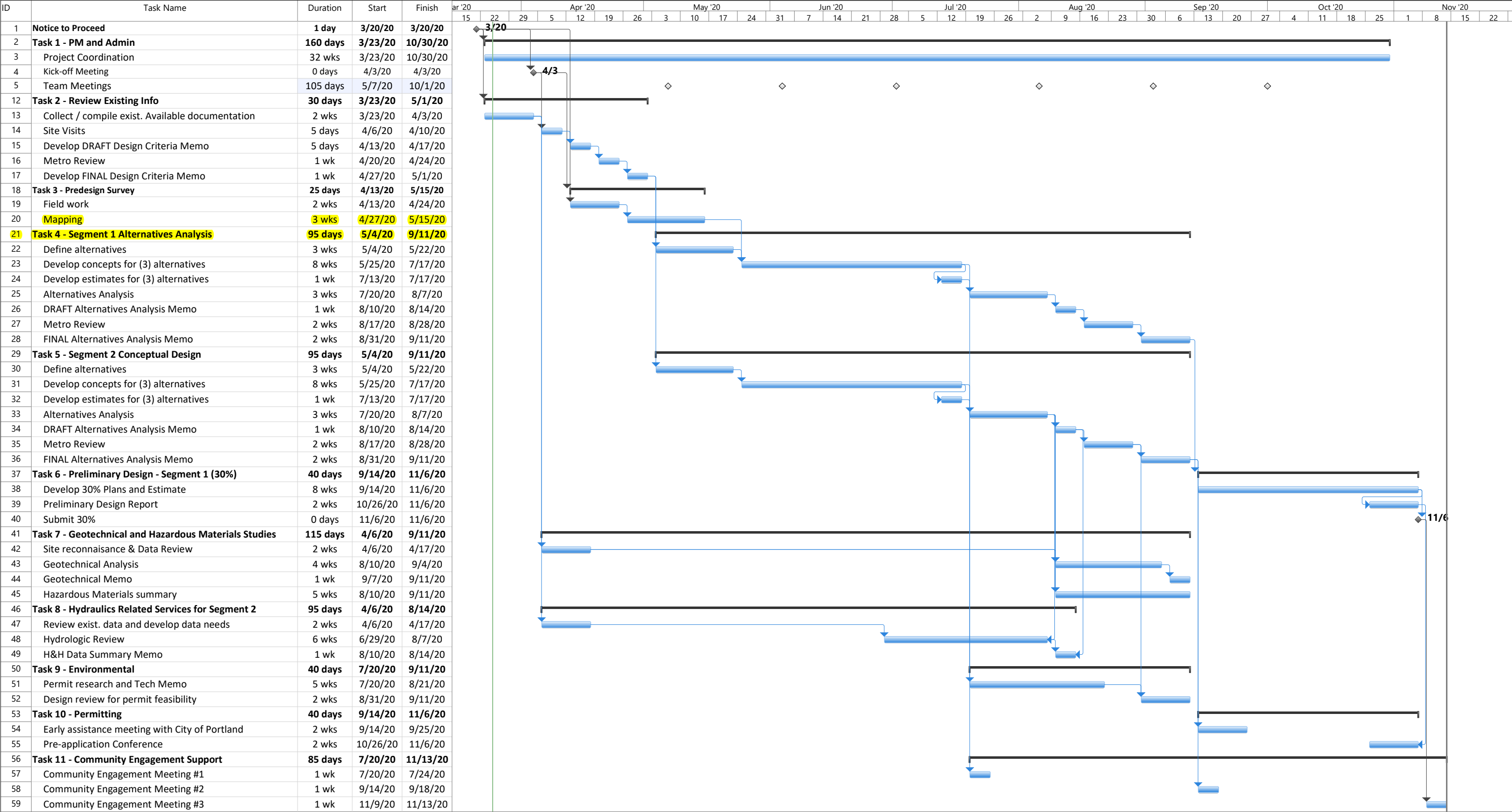
PORTLAND PARKS & RECREATION
Healthy Parks, Healthy Portland



MAY, 2020
MAYO, 2020

St. John's Prairie Trail - Phase 1 Project Schedule
DRAFT

KPFF
3/25/20





ATTACHMENT 3

Annie Toledo

From: Troy clark <brillobrain8@gmail.com>
Sent: Monday, May 04, 2020 7:31 PM
To: Annie Toledo
Subject: [External sender]Fwd: Update on Wapato Property

From: **Raven Brown** <r.brown@helpinghandsreentry.org>
Date: Sat, May 2, 2020 at 10:16 AM
Subject: Re: Update on Wapato Property
To: Troy clark <brillobrain8@gmail.com>

Hi again Troy,

Thanks for your patience with my delay this week, as you heard from Mike, it's been a crazy week for us. We will be putting out a press release before your board meeting to announce who we have hired for General Contractor (Precision, a sister company/special projects division of Hoffman who originally built the building - you met our awesome Foreman Mike), and for architectural engineering and design (Otak, who are bringing in some great local small business partners for wayfinding and experiential design). We are still working with project managers at Day CPM, and the whole team is excited about the project. Precision walked the perimeter fence this week and is working on closing up all holes. They have found and mended 4 breaches that I know of. This will hopefully keep vandals off our property during construction and will keep our program participants out of the wetlands later during operation.

Covid-19 has of course impacted our project just like every other aspect of our lives, with cancelling so many public tours, fundraisers, and community outreach events, and making subcontractor tours more difficult. It has also impacted our operations in other counties, we've been working overtime to keep people safe, sane, and sober. But we've been able to work remotely to keep the Hope Center project on schedule, and the team is aiming for being open by the end of October if possible. We'll be out at the property much more often now with subcontractor walkthroughs and through the summer and early fall.

I hope you're doing well and staying healthy! When quarantine is over I'd still love to bring a couple friends and take you up on a walk through the wetlands!

Raven

Raven Russell
Director of Data & Major Projects

Helping Hands Reentry Outreach Centers
Cell: 503-298-9104

Progress toward restoration goals in the CNRP

The last update I recall was in April 2014, so I left those numbers in for comparison. A few clarifying points:

- Riparian forest, forested wetland and shrub wetland are planted at the same time, and it is a bit difficult to tease out the specific acreages for each. Also, the acreage includes some interplanting of units that were originally planted before the first levy & CNRP.
- The Columbia sedge meadow acreage includes areas that Jeff chose to plant with shrubs. The only shapefile I have from him includes all the area, so that will need to be updated sometime.
- The prairie value includes Meadowlark 3 and the 5 acres around the planned trail overlook (75 total acres), which will be seeded this fall.

	Goal (ac.)	April 2014	May 2020
Riparian forest	80	~50	~50
Forest & shrub wetland	91	70	102
Columbia sedge meadow	12	7	25
Prairie	80	67	142
Painted turtle	n/a	-	-
Streaked horned lark	10	11	11
	273	155	280

In Levy 2 we have planned another 100 acres of riparian forest/forested and shrub wetland. Site preparation should start this spring.

