

METROPOLITAN EXPOSITION-RECREATION COMMISSION

RESOLUTION NO. 57

Adopting a revised organizational structure for the Metropolitan Exposition-Recreation Commission.

The Metropolitan Exposition-Recreation Commission finds:

1. That the present organizational structure was suited for the Memorial Coliseum and Civic Stadium, under the authority of the Exposition-Recreation Commission.
2. That with the addition of the Portland Center for the Performing Arts to the E-R Commission in 1987, and with the consolidation of ERC and MERC facilities in 1990, it is necessary to revise the Commission's organizational structure.
3. That as part of the planning process for the Oregon Convention Center and consolidation, a five year plan was drafted in 1988, which included an outline of an organizational structure for consolidated facilities.

BE IT THEREFORE RESOLVED that the Metropolitan Exposition-Recreation Commission adopts the organizational structure attached, and directs staff to implement that reorganization by July 1, 1990.

Passed by the Commission on March 14, 1990.

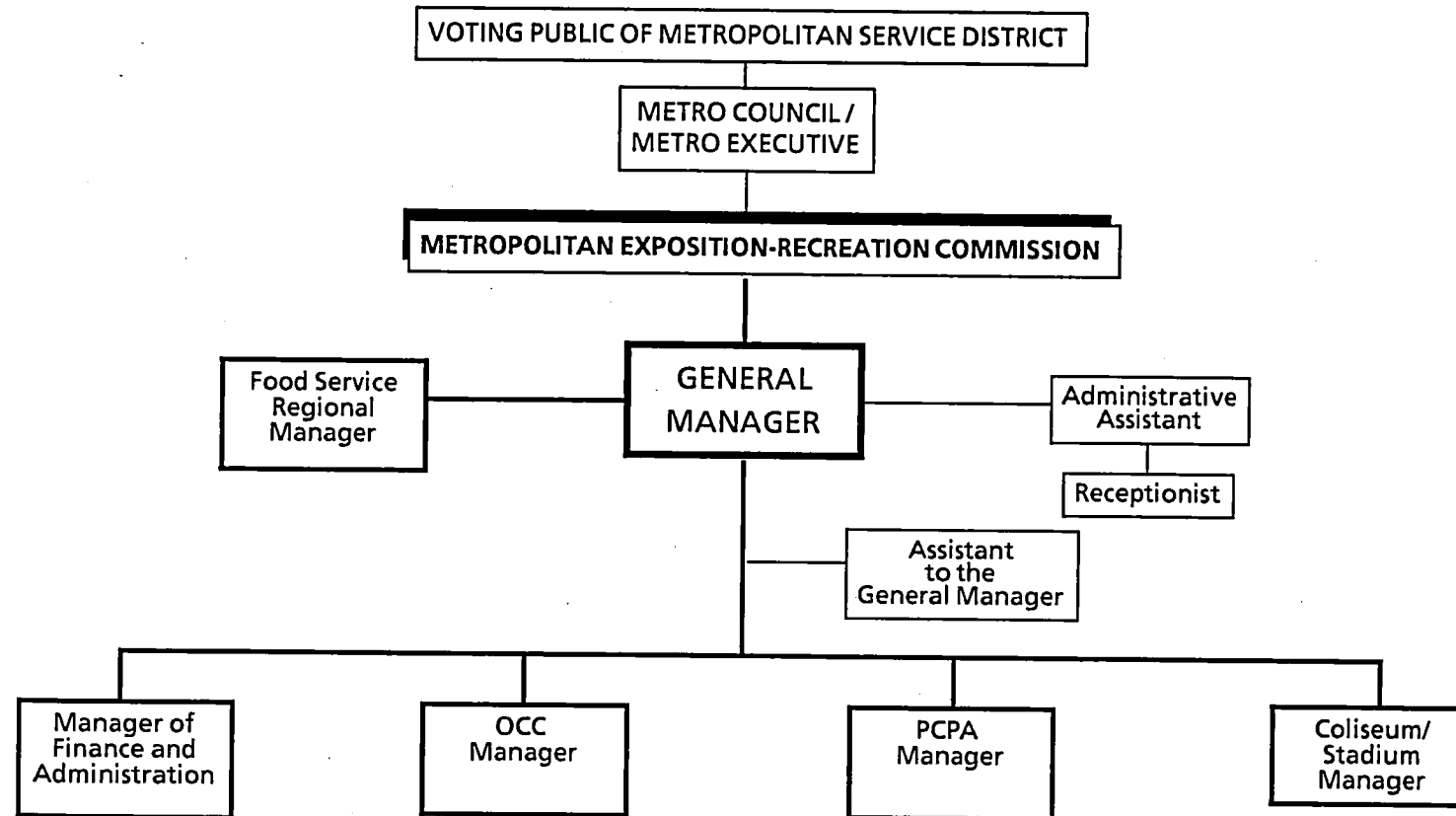

Chair


Secretary/Treasurer

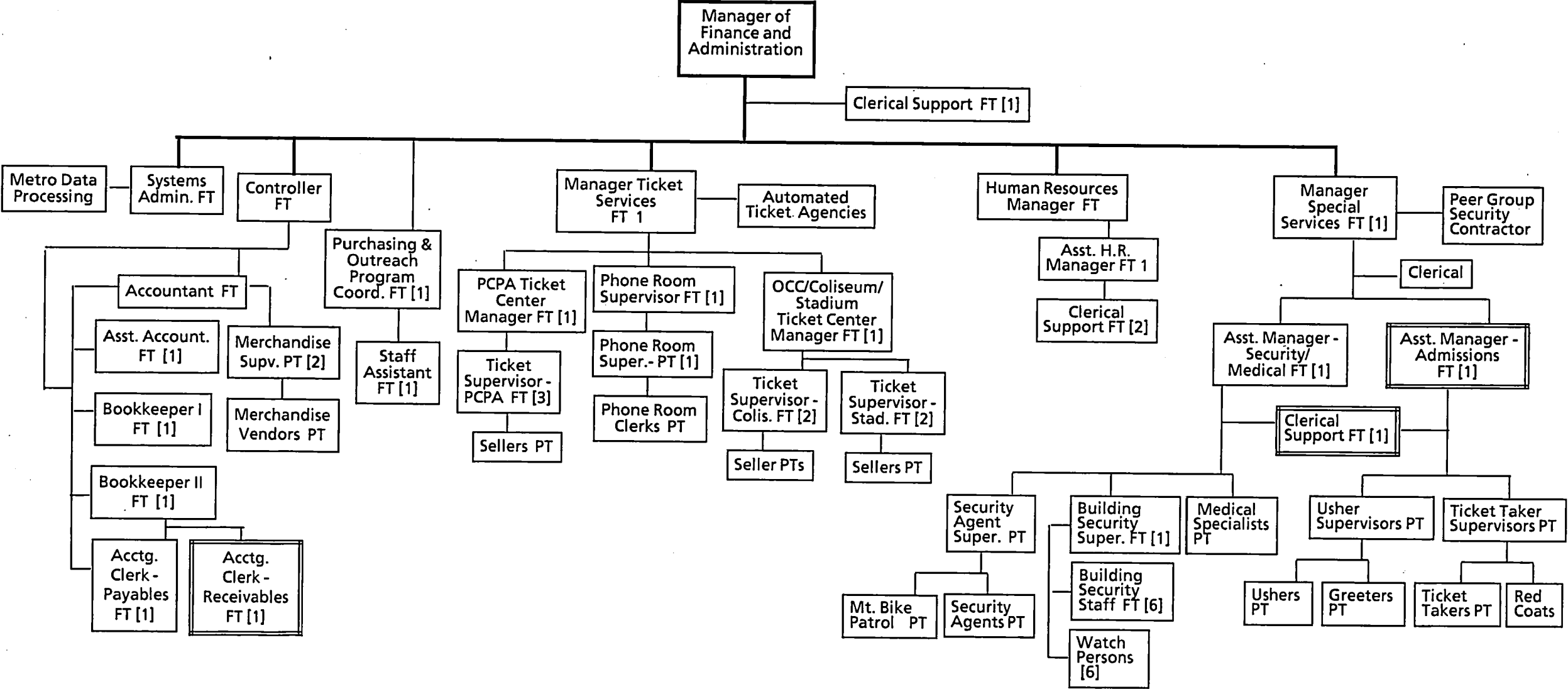
APPROVED AS TO FORM:


Metro General Counsel

DRAFT

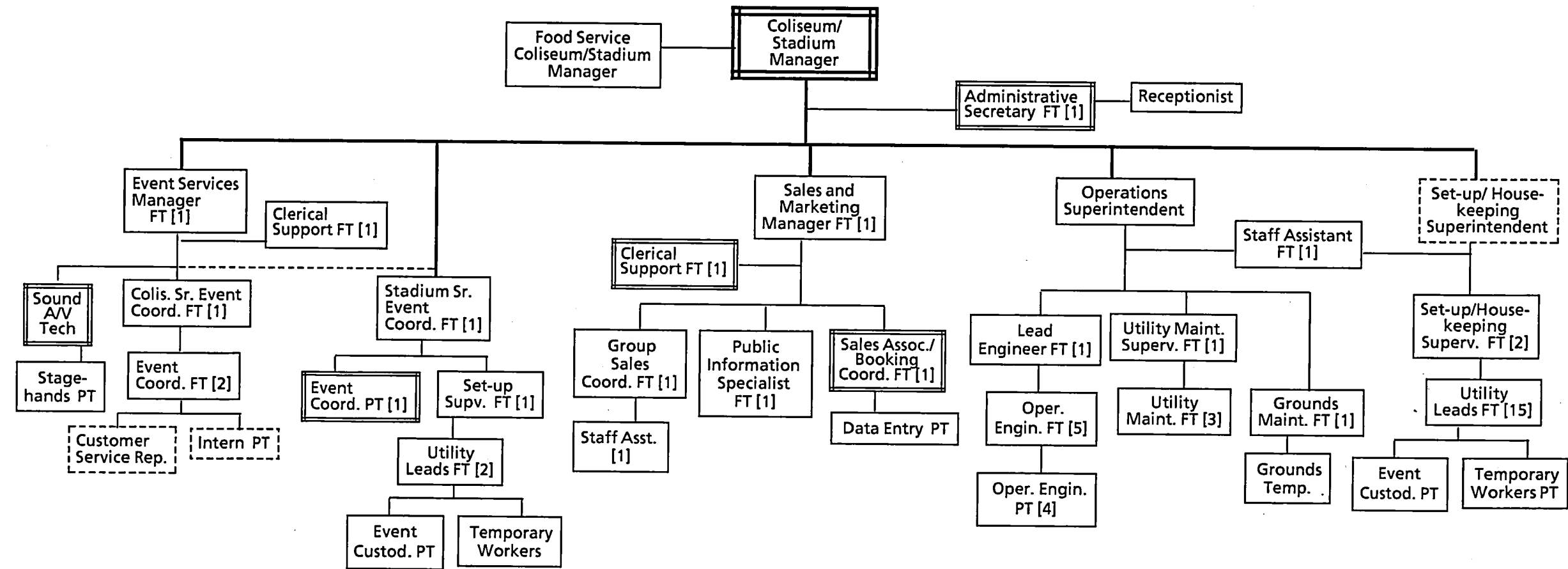


DRAFT



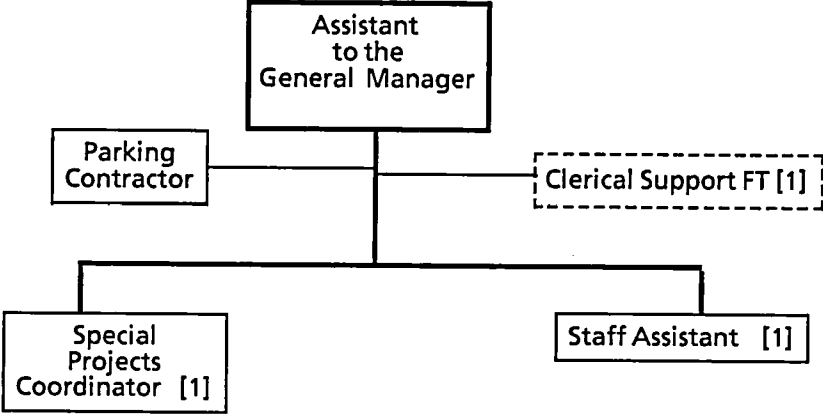
 = future position
 = new position



DRAFT



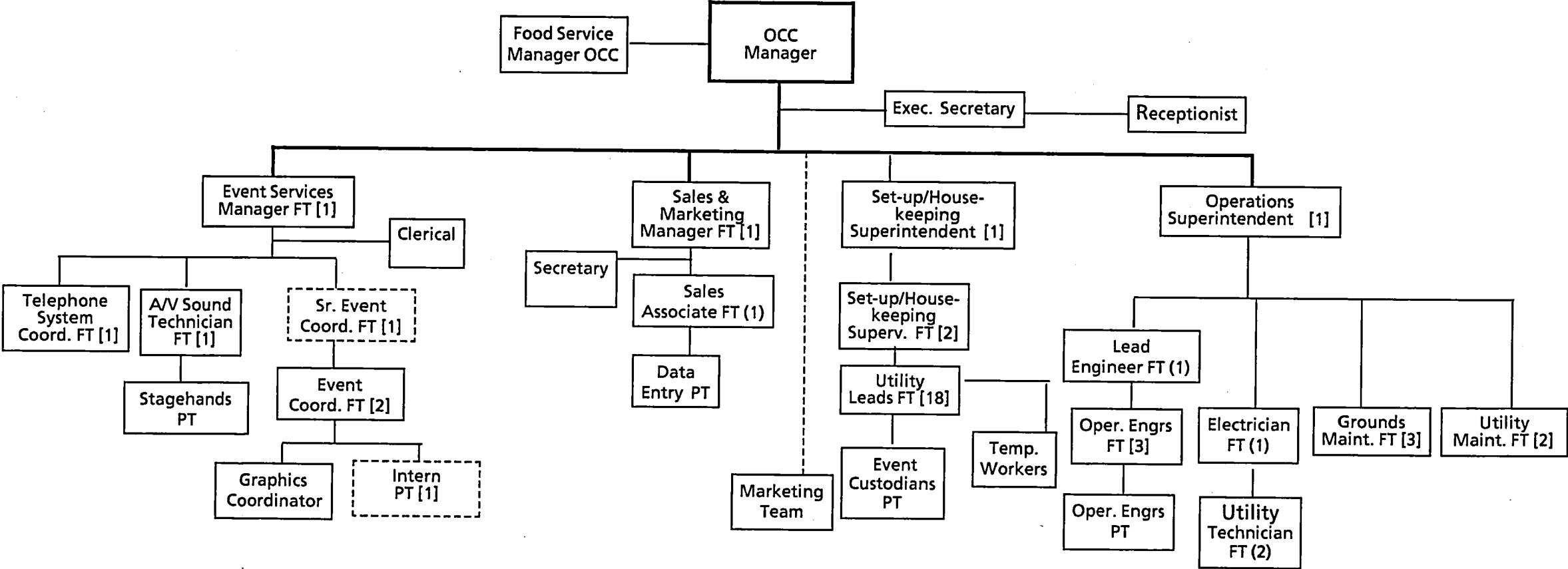
= future position
 = new position



DRAFT



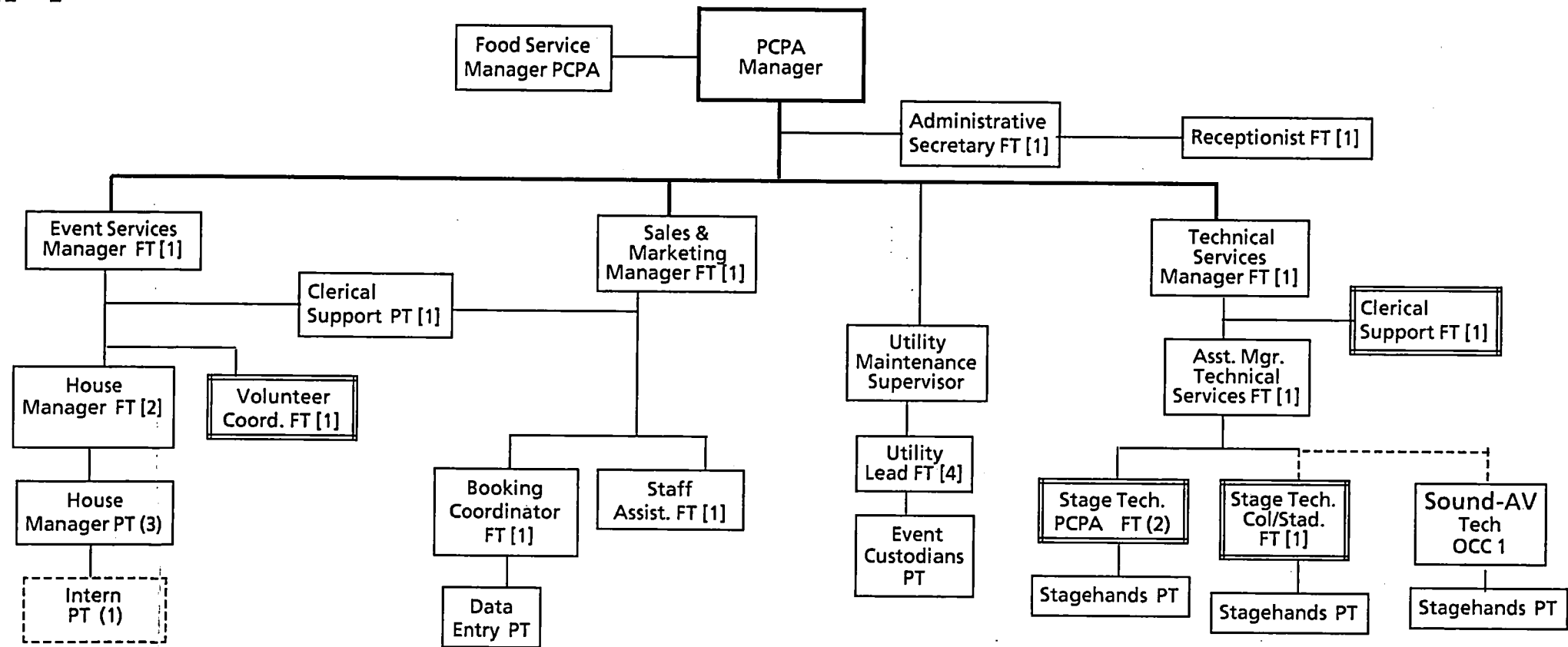
 = future position
 = new position



DRAFT



 = future position
 = new position

DRAFT



 = future position
 = new position