

METROPOLITAN EXPOSITION-RECREATION COMMISSION

RESOLUTION NO. 101

Authorizing the expenditure of \$10,000 to support Arts Plan 2000 Plus, a regional cultural planning effort referred to in Exhibits A, B and C, attached.

The Commission finds:

1. That the Metropolitan Arts Commission has undertaken a regional cultural planning effort known as Arts Plan 2000 Plus;
2. That the process of developing the Plan involves the City of Portland, Metro, Multnomah, Clackamas, and Washington Counties;
3. That the goals, organization, and issue list for Arts Plan 2000 Plus, are shown in Exhibits A, B, and C, attached;
4. That Metro and the Metro E-R Commission are linked with appointments to the Arts Plan 2000 Plus advisory committees. Metro Executive Officer Cusma, and Councilor Knowles serve on the Elected Officials Committee; Metro E-R Commissioners Richard Ares and Mitzi Scott serve on the Steering Committee;
5. That the Metropolitan Arts Commission has retained a national consultant, the Wolf Organization, to undertake the technical work required, including a cultural needs assessment, assessment of organization structures that exist in Portland to sustain cultural life, a general public survey, funding assessment, review of public art programs, comparable communities analysis, and a policy and planning review, all to result in the development of a cultural master plan;
6. That the Arts Commission has requested that Metro provide \$20,000 to support the efforts of the Plan, and that similar requests will be made of other jurisdictions, foundations, and others;
7. That \$10,000, of the \$20,000 Metro support, be allocated from the Commission Central Management FY 1990-91 Budget;
8. That the Metropolitan E-R Commission has funding to cover this expenditure in the Central Management FY 1990-91 Budget, in Miscellaneous Professional Services line item expense category.

Resolution No. 101
Page Two

BE IT THEREFORE RESOLVED that the Chairman and Secretary-Treasurer are authorized to sign, on behalf of the Commission, an agreement with the Metropolitan Arts Commission, which authorizes the expenditure of \$10,000 to assist in the development of a cultural master plan known as Arts Plan 2000 Plus.

Passed by the Commission on December 12, 1990

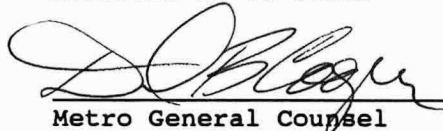


Chairman



Secretary-Treasurer

APPROVED AS TO FORM:



Metro General Counsel

M E M O R A N D U M

TO: Metropolitan Exposition-Recreation Commission

FROM: Dominic Buffetta

RE: ARTS PLAN 2000 PLUS FUNDING

BACKGROUND

The Metropolitan Arts Commission has undertaken a regional cultural planning effort known as Arts Plan 2000 Plus, and is requesting that Metro support this effort financially. The process for developing the Plan involves the City of Portland, Metro, Multnomah, Clackamas, and Washington Counties.

The goals, organization, and issue list for Arts Plan 2000 Plus shows as Exhibit A, B, and C, in this report. The development of the Plan is to occur over the next eight months.

Metro and the Metro E-R Commission are linked with appointments to the Arts Plan 2000 Plus advisory committees. Metro Executive Officer Cusma and Councilor Knowles serve on the Elected Officials Committee; Metro E-R Commissioners Richard Ares and Mitzi Scott serve on the Steering Committee.

Recently, the Metropolitan Arts Commission retained a national consultant, the Wolf Organization, to undertake the technical work required. Briefly, the consultant work plan includes a cultural needs assessment, assessment of organizational structures that exist in Portland to sustain cultural life, a general public survey, funding assessment, review of public art programs, comparable communities analysis, and policy and planning review, all to result in the development of a cultural master plan.

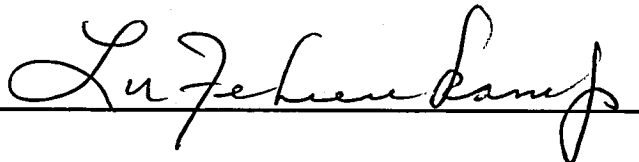
PROPOSED ACTION

The Arts Commission has requested that Metro provide \$20,000 to support the efforts of the Plan. Similar requests will be made of other jurisdictions, foundations, and others. It is proposed that Metro provide this financial support through two funds: (1) \$10,000 from Metro General Fund Contingency; and (2) \$10,000 from the Metro Exposition-Recreation Commission's Central Management FY 1990-91 Budget.

RECOMMENDATION

Since sufficient funds exist in the Commission's Central Management FY 1990-91 Budget, we recommend that Resolution No. 101, which allocates \$10,000 from Metro E-R Commission's Management Fund to support Arts Plan 2000 Plus Funding, be approved.

General Manager's Concurrence



RB:jlt

ARTS PLAN 2000 PLUS

WHAT: A ten month planning process to develop a Cultural Action Plan for the Portland, Tri-County Metropolitan region. The comprehensive planning effort is aimed at assessing the role and function of arts programs and facilities relative to other important community needs and priorities. When completed, AP2+ will propose objectives in meeting the region's cultural needs in the 90's, identify the resources required to meet them, and designate responsibility for implementation.

HOW: Solid research, tapping of creative and effective leadership and public input are all important elements of this comprehensive planning effort. A 43 member Steering Committee representing the civic, business, arts, education and philanthropic leadership of the region will guide the process. The Wolf Organization, the nation's premier cultural planning team, has been engaged to act as advisors and facilitators for the process. Specific products of AP2+ will include:

- 1) A formal written plan assessing existing programs, activities, facilities, and resources.
- 2) Specific recommendations in such areas as arts in education, audience development and outreach, cultural diversity, stabilizing arts institutions, public/private funding partnerships and regional approaches to delivery of and support for arts services.
- 3) A timeline for implementation of recommendations
- 4) Market survey data for the Tri-County area which can be used by arts personnel to develop more effective target marketing strategies and techniques.
- 5) Economic impact research designed to produce reliable data about the arts role in the regional economy.

WHY: The arts sector's continued viability and future contribution to our community's quality of life and economic vitality is threatened by an image of elitism, controversy over management of facilities, limited resources and confusion over

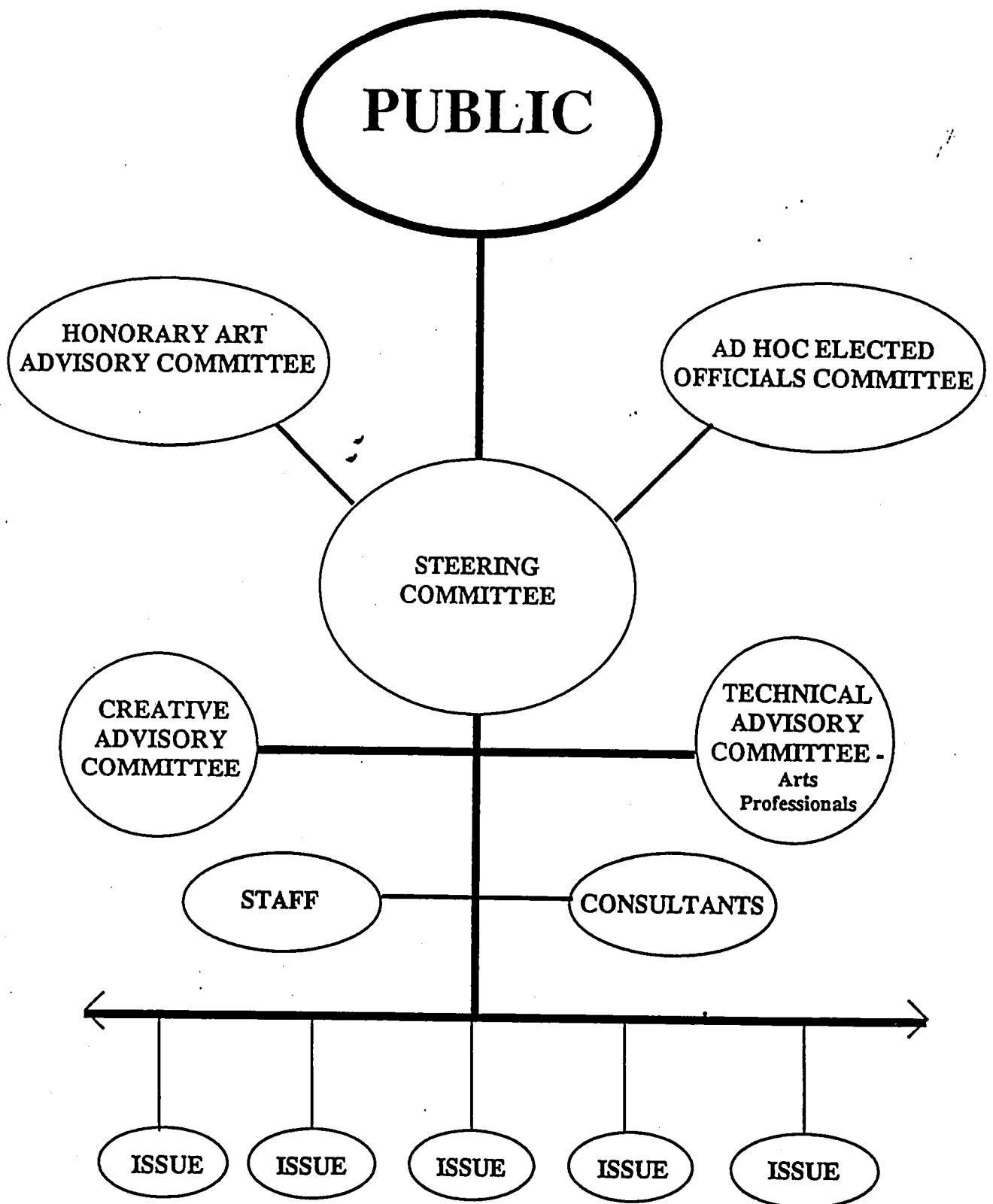
goals and priorities. It is time to plan carefully for sensible stewardship and wise investment in our cultural resources.

A Cultural Action Plan is needed to:

- 1) Broaden the constituency for arts programs and develop new ways to reach underserved audiences such as minorities, children, seniors and the economically disadvantaged;
- 2) Promote a climate which supports and encourages artistic excellence;
- 3) Plan for regional coordination and delivery of cultural services;
- 4) Coordinate and enhance arts sector involvement in tourism, economic development, neighborhood revitalization and education;
- 5) Coordinate greater cooperation among arts organizations and other agencies;
- 6) Improve the financial and management stability of cultural institutions.
- 7) Establish clear priorities for public and private support for our cultural programs and facilities.
- 8) Strengthen and broaden the base of resources and leadership available to provide stewardship for our cultural resources
- 9) Integrate planning for the arts sector with other planning efforts such as the Portland Future Focus, the METRO Facilities Study, and the Governor's Commission on Higher Education;

WHERE: The cultural planning effort was initiated by the Metropolitan Arts Commission and Portland City Commissioner Mike Lindberg. The plan now has an office for staff in space donated by Walker & Macy Landscape Architects, 111 S.W. Oak, Suite 200. Ann Mason has been hired as the plan coordinator. More information may be obtained by calling the AP2+ office, 223-0831 or MAC, 796-5111.

ARTS PLAN 2000 +



ISSUE STUDY GROUPS will include the public at large, issue specialists, artists, business, philanthropy and government. Possible issue topics include: Resource Development, Education and the Arts, Public Art, Audience Outreach, Cultural Diversity, Economic Impact, Arts in the Community, Artist Issues, Facilities, etc.

Exhibit A
SCOPE OF WORK

In consideration of financial support of Arts Plan 2000 Plus, the Metropolitan Arts Commission shall provide to the Metropolitan Exposition-Recreation Commission:

1. Opportunity to have input on the design of opinion surveys, interviews, and organization assessments, so that relevant questions regarding Metro E-R Commission facilities are asked. Input will be coordinated through Metro's Facilities Committee-PCPA subcommittee. Arts Plan 2000 Plus will conduct this research.

2. Access to task force meetings and notes from deliberations.

3. Recommendations on the following topics:

a. Regional approaches to the development of cultural programs, facilities, and audiences;

b. Estimates of resources needed to support existing new programs on a region-wide basis;

c. Funding mechanisms and strategies for the support of cultural services and facilities, from both the public and private sectors;

d. Strategies to better integrate cultural programs into regional economic development, and tourism and convention promotion effort.

4. The Arts Commission shall, at the conclusion of the planning process, provide presentation on the Plan to the Metropolitan Exposition-Recreation Commission.

Exhibit B
COMPENSATION

For the products and process provided for in this Agreement, the Metropolitan Exposition-Recreation Commission shall pay to the Metropolitan Arts Commission \$10,000.00 from the COMMISSION'S Central Management Fund within 30 days of the General Manager's receipt of an invoice requesting funds.

ARTS PLAN 2000 PLUS - ISSUES WHICH MAY BE ADDRESSED

Final decisions about arts and cultural issues to be addressed in the planning process will be made by the Steering Committee with input based upon public meetings, opinion research, interviews, etc. Certainly the process of prioritizing issues and strategies will involve tough decisions. Nevertheless, the following have emerged as a result of preliminary planning.

- * **Public involvement/outreach:** The need to counter an image of the arts as elitist; reach out to new audiences and inform all citizens of the wealth of available arts opportunities.
- * **A Regional Approach:** The need to assess arts programs, facilities and audiences from the standpoint of impact, support and participation on a regional basis.
- * **Cultural Diversity:** How can our arts programs and audiences better reflect the involvement of the range of ethnic minorities residing in Portland? How can access to programs, resources and diverse artistic expressions be improved?
- * **Facilities:** The need to develop a public service oriented plan and adequate resource base for effective, regionally based management of existing and/or new arts facilities.
- * **Education:** How can arts programs be more thoroughly integrated into the educational system and more active and effective partnerships with cultural institutions and artists be encouraged?
- * **Artists:** How can we create a climate supportive of innovation and creativity which encourages the finest artists to live, produce and present their work here.
- * **Resources:** How can effective public/private partnerships be established to provide responsible stewardship and appropriate investment in our cultural programs, institutions and facilities?
- * **Stability of arts institutions:** 11 of the 17 largest arts institutions in our community are carrying accumulated deficits and the failure or near failure of arts organizations has been a regular news item over the last few years. How can management effectiveness and financial stability be improved.
- * **New roles for the arts:** New roles and working relationships and strategies linking the arts to tourism, economic development, neighborhood revitalization and the human services should be assessed in comparison to traditional programs and current resource allocations.
- * **Public art:** The success of the program has yielded a large and diverse collection. It is time for a thorough analysis of our practices, policies and priorities in public art as the program expands and the collection grows.

INTERGOVERNMENTAL AGREEMENT

THIS AGREEMENT dated the 12th day of December, 1990, is between the Metropolitan Exposition-Recreation Commission, hereinafter referred to as "COMMISSION", whose address is Post Office Box 2746, Portland, Oregon, 97208, and the Metropolitan Arts Commission, hereinafter referred to as "CONTRACTOR", whose address is The Portland Building, 1120 SW Fifth Avenue, Portland, Oregon, 97204, for the period of December 12, 1990, through June 30, 1991, and for any extension thereafter, pursuant to written agreement of both parties.

WITNESSETH:

WHEREAS, This Agreement is exclusively for Personal Services;

NOW, THEREFORE, IT IS MUTUALLY AGREED AS FOLLOWS:

CONTRACTOR AGREES:

1. To perform the services and deliver to COMMISSION, material described in the Scope of Work attached hereto;
2. To provide all services and materials in a competent and professional manner, in accordance with the Scope of Work;
3. To comply with all applicable provisions of ORS Chapters 187 and 279, and all other terms and conditions necessary to be inserted into public contracts in the State of Oregon, as if such provisions were a part of this Agreement;
4. To maintain records relating to the Scope of Work on a generally recognized accounting basis, and to make said records available to COMMISSION, at mutually convenient times;
5. To indemnify and hold COMMISSION, its agents, and employees harmless from any and all claims, demands, damages, actions, losses, and expenses, including attorney's fees arising out of or, in any way, connected with its performance of this Agreement, with any patent infringement arising out of the use of CONTRACTOR'S designs or other materials by COMMISSION, and for any claims or disputes involving subcontractors;
6. To comply with any other "Contract Provisions" attached hereto as so labeled; and
7. CONTRACTOR shall be an independent contractor for all purposes, and shall be entitled to no compensation other than the compensation provided for in this Agreement. CONTRACTOR hereby certifies that it is the direct responsibility employer, as provided in ORS 656.407, or a contributing employer as provided in ORS 656.411. In the event CONTRACTOR is to perform the services described in the Agreement, without the assistance of others, CONTRACTOR hereby agrees to file a joint declaration with COMMISSION to the effect that CONTRACTOR services are those of an independent contractor as provided under Chapter 864 of Oregon Laws, 1979.

RECEIVED DEC 17 1990

ARTS PLAN 2000 PLUS
INTERGOVERNMENTAL AGREEMENT
Page Two

COMMISSION AGREES:

1. To pay CONTRACTOR for services performed, and materials delivered, in the maximum sum of TEN THOUSAND AND 00/100THS (\$10,000.00) DOLLARS, and in the manner and time designated in the Scope of Work; and
2. To provide full information regarding its requirements for the work.

BOTH PARTIES AGREE:

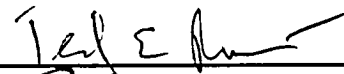
1. That COMMISSION may terminate this Agreement upon giving CONTRACTOR five (5) days written notice, without waiving any claims or remedies it may have against CONTRACTOR;
2. That in the event of termination, COMMISSION shall pay CONTRACTOR for services performed, and materials delivered, prior to the date of termination; but shall not be liable for indirect or consequential damages;
3. That in the event of any litigation concerning this Agreement, the prevailing party shall be entitled to reasonable attorneys' and court costs, including fees and costs on appeal to an appellate court;
4. That this Agreement is binding on each party, its successors, assigns, and legal representatives, and may not, under any condition, be assigned or transferred by either party; and
5. That this Agreement may be amended only by the written agreement of both parties.

METROPOLITAN ARTS COMMISSION

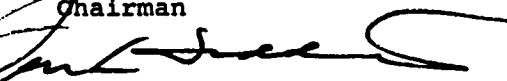
Signed: 

Date: 12/16/90

METROPOLITAN EXPOSITION-RECREATION COMMISSION

Signed: 
Chairman

Date: 12/12/90

Signed: 
Secretary-Treasurer

Date: 12/12/90

APPROVED AS TO FORM: _____

City Attorney

APPROVED AS TO FORM: 

General Counsel