

BEFORE THE METRO COUNCIL

|                                     |   |                                       |
|-------------------------------------|---|---------------------------------------|
| FOR THE PURPOSE OF ADOPTING THE     | ) | ORDINANCE NO. 21-1457                 |
| DISTRIBUTION OF THE POPULATION AND  | ) |                                       |
| EMPLOYMENT GROWTH TO YEAR 2045 TO   | ) | Introduced by Chief Operating Officer |
| LOCAL GOVERNMENTS IN THE REGION     | ) | Marissa Madrigal in concurrence with  |
| CONSISTENT WITH THE FORECAST        | ) | Council President Lynn Peterson       |
| ADOPTED BY ORDINANCE NO. 18-1427 IN | ) |                                       |
| FULFILLMENT OF METRO'S POPULATION   | ) |                                       |
| COORDINATION RESPONSIBILITY UNDER   | ) |                                       |
| ORS 195.036                         | ) |                                       |

WHEREAS, ORS 195.025 designates Metro as the local government responsible for coordination of planning activities within the Metro district; and

WHEREAS, ORS 195.036 requires Metro, in coordination with other local governments within its boundary, to issue a population forecast for the entire area within its boundary to be applied by Metro and local governments within the boundary of Metro as a basis for changes to comprehensive plans and land use regulations; and

WHEREAS, on December 13, 2018 the Metro Council adopted a population and employment forecast for the region by Ordinance No. 18-1427 ("For the Purpose of Expanding the Urban Growth Boundary to Provide Capacity for Housing to the Year 2038 and Amending the Metro Code to Conform"); and

WHEREAS, Metro planning staff have begun work on a required update to the Regional Transportation Plan, which is scheduled for adoption in 2023 and will need to rely on the most current data regarding the distribution of the forecasted population and employment growth for the region; and

WHEREAS, Metro began the process of distribution of the forecasted population and employment in November 2019 by coordinating with the 24 cities and three counties within the Metro district regarding the proposed distribution, including a series of meetings and a review and comment period designed to improve the accuracy of the distributions; and

WHEREAS, Metro staff made presentations to its advisory committees (MTAC and TPAC) regarding the distribution and coordination with local governments; and

WHEREAS, Metro incorporated comments and suggestions from the cities and counties to refine the distribution; and

WHEREAS, the forecast distributions shown on the attached Exhibit A are expressed in terms of population, households, and employment; now, therefore,

THE METRO COUNCIL ORDAINS AS FOLLOWS:

1. The distribution made to local governments, described in Exhibit A to this Ordinance and in the Staff Report dated January 29, 2021, of the regional population and employment forecast adopted by the Council in Ordinance No. 18-1427, is accepted and adopted as fulfillment of Metro's responsibilities regarding coordination of population forecasts under ORS 195.025 and 195.036 and is endorsed for use by the 24 cities and three counties as their own population and employment forecasts for their planning activities.
2. The Metro Chief Operating Officer shall make the distribution of population and employment available to each city and county in the district.

ADOPTED by the Metro Council this 25th day of February 2021.



---

Lynn Peterson, Council President

Attest:

Approved as to Form:



---

Jaye Cromwell, Recording Secretary



---

Carrie MacLaren, Metro Attorney

**Exhibit A to Ordinance No. 21-1457**  
**2045 Distributed Forecast of Population, Households, and Employment**

|   | Population Forecast        |           |           |
|---|----------------------------|-----------|-----------|
|   | (adjusted to city limits)* |           |           |
|   | 2020                       | 2030      | 2045      |
| <u>Jurisdiction*</u>  |                            |           |           |
| Banks   | 1,959                      | 2,022     | 2,021     |
| Barlow  | 137                        | 130       | 119       |
| Beaverton   | 99,490                     | 114,525   | 119,156   |
| Canby   | 17,161                     | 19,582    | 19,681    |
| Cornelius   | 12,534                     | 14,606    | 17,322    |
| Durham  | 1,878                      | 1,859     | 1,793     |
| Estacada  | 4,091                      | 5,227     | 5,267     |
| Fairview  | 9,024                      | 9,538     | 9,797     |
| Forest Grove  | 26,370                     | 30,702    | 33,592    |
| Gladstone   | 11,960                     | 12,071    | 12,021    |
| Gresham   | 113,409                    | 119,476   | 122,154   |
| Happy Valley  | 22,556                     | 41,314    | 57,362    |
| Hillsboro   | 105,153                    | 122,598   | 128,270   |
| Johnson City  | 572                        | 589       | 848       |
| King City   | 4,718                      | 6,961     | 8,985     |
| Lake Oswego   | 40,035                     | 41,947    | 42,133    |
| Maywood Park  | 764                        | 730       | 724       |
| Milwaukie   | 20,594                     | 22,859    | 23,268    |
| Molalla   | 10,088                     | 14,035    | 14,160    |
| North Plains  | 3,480                      | 5,194     | 5,860     |
| Oregon City   | 36,457                     | 42,665    | 49,009    |
| Portland  | 668,429                    | 708,370   | 774,219   |
| RiverGrove  | 509                        | 483       | 449       |
| Sandy   | 11,127                     | 17,621    | 18,451    |
| Sherwood  | 19,747                     | 20,118    | 20,662    |
| Tigard  | 54,591                     | 63,813    | 71,611    |
| Troutdale   | 16,292                     | 17,385    | 17,795    |
| Tualatin  | 27,278                     | 27,598    | 27,565    |
| West Linn   | 26,060                     | 26,579    | 26,990    |
| Wilsonville   | 25,945                     | 29,756    | 30,566    |
| Wood Village  | 4,213                      | 4,814     | 5,306     |
| Unincorporated Clackamas County   | 201,322                    | 219,034   | 293,341   |
| Unincorporated Multnomah County   | 19,328                     | 22,264    | 40,490    |
| Unincorporated Washington County  | 264,884                    | 308,416   | 372,475   |
|   | 2020                       | 2030      | 2045      |
| Clackamas County, total   | 428,614                    | 493,892   | 593,665   |
| Multnomah County, total   | 831,459                    | 882,577   | 970,485   |
| Washington County, total  | 622,082                    | 718,412   | 809,312   |
|   | 1,882,155                  | 2,094,881 | 2,373,462 |
| * 2020 city limits  |                            |           |           |
| Note: All forecast figures prepared pre-COVID.  |                            |           |           |
| Note: All forecast figures prepared pre-Census 2020 vintage population program release> |                            |           |           |
| Note: 2020 is a forecast year estimate.   |                            |           |           |

|   | <b>Household Forecast</b>         |             |             |
|---|-----------------------------------|-------------|-------------|
|   | <b>(adjusted to city limits)*</b> |             |             |
|   |                                   |             |             |
|   | <b>2020</b>                       | <b>2030</b> | <b>2045</b> |
| <b><u>Jurisdiction*</u></b>   |                                   |             |             |
| Banks   | 580                               | 619         | 622         |
| Barlow  | 40                                | 40          | 40          |
| Beaverton   | 39,895                            | 47,544      | 51,262      |
| Canby   | 6,564                             | 7,833       | 8,312       |
| Cornelius   | 3,773                             | 4,552       | 5,594       |
| Durham  | 686                               | 703         | 703         |
| Estacada  | 1,513                             | 2,022       | 2,246       |
| Fairview  | 3,654                             | 4,039       | 4,388       |
| Forest Grove  | 9,058                             | 10,918      | 12,380      |
| Gladstone   | 4,568                             | 4,727       | 4,777       |
| Gresham   | 41,195                            | 45,384      | 49,067      |
| Happy Valley  | 6,893                             | 13,203      | 20,210      |
| Hillsboro   | 42,338                            | 51,103      | 55,409      |
| Johnson City  | 285                               | 307         | 486         |
| King City   | 2,442                             | 3,730       | 4,990       |
| Lake Oswego   | 17,257                            | 18,909      | 19,486      |
| Maywood Park  | 356                               | 356         | 355         |
| Milwaukie   | 9,141                             | 10,611      | 11,328      |
| Molalla   | 3,363                             | 4,893       | 5,443       |
| North Plains  | 1,031                             | 1,593       | 1,862       |
| Oregon City   | 13,557                            | 16,591      | 21,010      |
| Portland  | 280,708                           | 311,084     | 359,541     |
| RiverGrove  | 185                               | 184         | 188         |
| Sandy   | 4,026                             | 6,667       | 7,696       |
| Sherwood  | 6,567                             | 6,926       | 7,372       |
| Tigard  | 21,617                            | 26,160      | 30,423      |
| Troutdale   | 5,880                             | 6,561       | 6,829       |
| Tualatin  | 10,955                            | 11,474      | 11,626      |
| West Linn   | 9,955                             | 10,617      | 11,886      |
| Wilsonville   | 9,778                             | 11,727      | 13,281      |
| Wood Village  | 1,223                             | 1,461       | 1,703       |
| Unincorporated Clackamas County   | 75,024                            | 85,357      | 126,027     |
| Unincorporated Multnomah County   | 5,588                             | 6,731       | 12,944      |
| Unincorporated Washington County  | 93,243                            | 112,396     | 140,670     |
|   |                                   |             |             |
|   | <b>2020</b>                       | <b>2030</b> | <b>2045</b> |
| Clackamas County, total   | 162,149                           | 193,685     | 252,417     |
| Multnomah County, total   | 338,604                           | 375,616     | 434,827     |
| Washington County, total  | 232,184                           | 277,718     | 322,914     |
|   | 732,937                           | 847,019     | 1,010,158   |
|   |                                   |             |             |
| * 2020 city limits  |                                   |             |             |
| Note: All forecast figures prepared pre-COVID.  |                                   |             |             |
| Note: All forecast figures prepared pre-Census 2020 vintage population program release> |                                   |             |             |
| Note: 2020 is a forecast year estimate.   |                                   |             |             |

|   | <b>Employment Forecast</b> |             |             |
|---|----------------------------|-------------|-------------|
|   | (adjusted to city limits)* |             |             |
|   | <b>2020</b>                | <b>2030</b> | <b>2045</b> |
| <b>Jurisdiction*</b>  |                            |             |             |
| Banks   | 579                        | 636         | 670         |
| Barlow  | 628                        | 580         | 602         |
| Beaverton   | 63,500                     | 65,005      | 72,693      |
| Canby   | 3,863                      | 3,913       | 4,312       |
| Cornelius   | 2,873                      | 3,086       | 3,895       |
| Durham  | 1,683                      | 1,718       | 1,842       |
| Estacada  | 1,250                      | 1,354       | 1,454       |
| Fairview  | 3,048                      | 3,633       | 5,355       |
| Forest Grove  | 7,120                      | 6,964       | 7,299       |
| Gladstone   | 2,911                      | 3,159       | 3,926       |
| Gresham   | 40,562                     | 47,161      | 55,902      |
| Happy Valley  | 7,823                      | 9,105       | 12,367      |
| Hillsboro   | 84,623                     | 92,918      | 102,430     |
| Johnson City  | 317                        | 314         | 340         |
| King City   | 708                        | 879         | 1,108       |
| Lake Oswego   | 21,525                     | 21,441      | 23,825      |
| Maywood Park  | 222                        | 235         | 251         |
| Milwaukie   | 13,273                     | 13,742      | 15,221      |
| Molalla   | 3,883                      | 3,944       | 4,020       |
| North Plains  | 794                        | 860         | 897         |
| Oregon City   | 17,122                     | 18,675      | 21,749      |
| Portland  | 480,904                    | 502,913     | 565,382     |
| RiverGrove  | 135                        | 133         | 141         |
| Sandy   | 3,193                      | 3,297       | 3,675       |
| Sherwood  | 6,646                      | 7,051       | 8,013       |
| Tigard  | 45,109                     | 46,005      | 52,368      |
| Troutdale   | 7,448                      | 8,291       | 10,321      |
| Tualatin  | 34,115                     | 34,615      | 36,792      |
| West Linn   | 4,982                      | 5,365       | 6,135       |
| Wilsonville   | 20,539                     | 21,323      | 24,010      |
| Wood Village  | 2,594                      | 3,197       | 3,798       |
| Unincorporated Clackamas County   | 72,446                     | 75,446      | 90,565      |
| Unincorporated Multnomah County   | 3,849                      | 5,416       | 10,081      |
| Unincorporated Washington County  | 65,763                     | 79,192      | 103,707     |
|   | <b>2020</b>                | <b>2030</b> | <b>2045</b> |
| Clackamas County, total   | 173,891                    | 181,792     | 212,341     |
| Multnomah County, total   | 538,628                    | 570,846     | 651,090     |
| Washington County, total  | 313,513                    | 338,930     | 391,712     |
|   | 1,026,032                  | 1,091,568   | 1,255,143   |
| * 2020 city limits  |                            |             |             |
| Note: All forecast figures prepared pre-COVID.  |                            |             |             |
| Note: All forecast figures prepared pre-Census 2020 vintage population program release> |                            |             |             |
| Note: 2020 is a forecast year estimate.   |                            |             |             |

## STAFF REPORT

IN CONSIDERATION OF ORDINANCE NO. 21-1457, FOR THE PURPOSE OF ADOPTING THE DISTRIBUTION OF THE POPULATION AND EMPLOYMENT GROWTH TO YEAR 2045 TO LOCAL GOVERNMENTS IN THE REGION CONSISTENT WITH THE FORECAST ADOPTED BY ORDINANCE NO. 18-1427 IN FULFILLMENT OF METRO'S POPULATION COORDINATION RESPONSIBILITY UNDER ORS 195.036.

---

Date: February 1, 2021  
Department: Planning & Development

Prepared by: Chris Johnson, Ted Reid  
Presenters: Chris Johnson, Roger Alfred  
Ted Reid

---

## BACKGROUND

Federal and state laws (23 U.S. Code 134 and ORS 197.040, respectively) require Metro to prepare and update a transportation plan for its metropolitan planning area every 5 years. In accordance with these laws, an update of the Regional Transportation Plan (RTP) is scheduled to begin in late 2021 with an intended adoption date of December 2023. This 2023 RTP will need to rely on a Transportation Analysis Zone<sup>1</sup> (TAZ) Distributed Forecast of future population and employment.

The 2045 Distributed Forecast under consideration is intended to replace and extend the 2040 Distributed Forecast, which was adopted by Metro in fall 2016. The 2045 Distributed Forecast is aligned with the Regional Forecast (seven-county area) developed to inform Metro's most recent urban growth management decision, which the Metro Council adopted in December 2018. This ensures that the 2023 RTP will be based on the best available information and that the region's land use and transportation plans are consistent.

Oregon land use laws (195.025; ORS 195.036) require Metro to coordinate its regional population and employment forecasts with local governments inside the urban growth boundary for use in updating their comprehensive plans, land use regulations and other related policies. In accordance with this law, Metro coordinated with the local jurisdictions to conduct this Distributed Forecast update for use in the 2023 RTP.

### The Growth Forecast Distribution Update Process

This update was able to build on the lengthy review process conducted in support of preparing the 2018 Urban Growth Report. During that process, Metro conducted extensive technical engagement with its regional partners to establish the methodology used to identify the region's buildable land inventory (BLI). With the 2018 Urban Growth Report already in place, Metro was able to focus regional

---

<sup>1</sup> The TAZ is the geographic unit that serves as the building block of Metro's primary forecasting tools (the travel demand model and MetroScope). The region is divided into 2,162 TAZs. These small subdivisions improve the accuracy of the travel demand model as well as all other aspects of transportation planning. The TAZ-level data also assists land use planners in updating comprehensive plans and zoning, and conducting other types of land use analysis, including neighborhood level analysis.

coordination efforts on revisions to smaller-geography population and employment forecasts based on local knowledge.

Regional coordination of the updated forecast distribution included two main stages of local review.

The first stage involved Metro and local government staff working together to confirm the core inputs to the MetroScope land use allocation model. These inputs include the base year numbers for population and employment as well as the BLI that was completed as part of the 2018 urban growth boundary decision. Local government staff reviewed these inputs and made revisions based on recent zoning changes, new developments or investments within their respective jurisdictions. This review period extended from May 2017 to May 2018.

Metro staff completed modeling using the results from the first stage of local review and prepared a draft distribution of households and jobs into the region's 2,162 TAZs. To view a TAZ map, refer to Exhibit A. The local jurisdictions were then given approximately five months (February 2020 thru June 2020) to examine the TAZ-level results. Jurisdictions wishing to adjust the growth by TAZ (increase or decrease) assigned by the model worked with Metro to re-allocate that growth in a manner consistent with accepted regional figures previously adopted by the Metro Council.

Metro worked closely with a designated county lead from each county throughout a second stage of review to ensure that all participating cities understood their roles and were able to complete their reviews by the deadline. Additional meetings were held with individual county leads to review results. With assistance from the county leads, Metro was able to either accommodate each jurisdiction's proposed changes or negotiate a satisfactory revision where the full change could not be implemented. The timeline for local reviewer engagement and ground rules are described in Attachment 1.

In accordance with state law (ORD 195.036), Metro summarized the TAZ distribution (which is used in transportation modeling) into a jurisdiction-level distribution that is more understandable for local planning activities. The resulting product is the 2045 Distributed Forecast of population, households and employment to cities and counties in the Portland region and is included as Exhibit B.

#### Regional Planning Directors Involvement

Metro coordinated with regional planning directors throughout the Distributed Forecast update through the local review process. The names of the regional planning directors, designated county leads, and other local reviewer who participated in this process are listed in Attachment 2.

The process began with a series of kickoff meetings held in January 2020, convening the planning directors (or designated planning leads) from Clackamas, Multnomah, and Washington Counties. Each kickoff meeting reviewed the purpose, timeline, and instructions for the local review process. The county leads served as liaisons between Metro and the cities within their respective jurisdictions, providing technical guidance to local staff throughout the process and helped to coordinate the timely return of feedback. County leads also conducted reviews on behalf of several smaller cities with limited planning staff capacity.

Metro staff communicated with county leads and jurisdiction staff primarily via e-mail throughout the local review process. Metro also met with county leads and cities as needed to coordinate reviews and provide guidance during the review period.

## Metro Advisory Committee Involvement

The Metro Technical Advisory Committee (MTAC) served as the primary advisory committee for the 2045 Distributed Forecast. A project kickoff presentation was given before MTAC in November 2019 to review the purpose, timeline, and ground rules for the local review process. Subsequent project status reports were provided to both MTAC and the Transportation Policy Alternatives Committee (TPAC) to keep both committee informed as to project progress. The final project status presentation was given to MTAC in November 2020.

## **ANALYSIS/INFORMATION**

### **1. Known Opposition**

There is no known opposition to the 2045 Distributed Forecast. Metro staff was able to either incorporate local jurisdictions' suggested revisions in the baseline assumptions and distributions or come to agreement on modifications to those assumptions and distributions.

### **2. Legal Antecedents**

Consultation conducted to prepare the 2045 Distributed Forecast satisfies Metro's coordination obligations under ORS 195.025 and 195.036. As requested by DLCDC, staff proposes that the Metro Council adopt the 2045 Distributed Forecast by an ordinance that will be acknowledged by DLCDC as part of Metro's planning documents in order to support future planning decisions by local governments that rely upon the population forecasts. State law requires cities and counties to adopt coordinated forecasts as part of their comprehensive plans.

### **3. Anticipated Effects**

Adoption of the updated distribution of population and employment forecast will inform the 2023 RTP and ensure that the plan is based on the most recent data available. This localized data will also encourage local governments to use the distribution information to conform their land use and transportation plans to regional policies adopted by the Metro Council. Delay of the adoption could also delay the development of the 2023 RTP and may delay some local government activities that would be accomplished with the updated 2045 Distributed Forecast information. Also note that a new Regional Forecast and subsequent Distributed Forecast will be prepared for the Metro Council's consideration as part of its anticipated urban growth management decision in 2024.

### **4. Budget Impacts**

The FY 2019-2020 and FY 2020-2021 budgets included resources for staff in the Research Center and the Planning and Development Department to work on this project.

## **RECOMMENDED ACTION**

Staff recommends that the Metro Council accept and adopt the updated 2045 Distributed Forecast of population, households and employment which was completed in accordance with Metro's responsibilities on population coordination with local governments in the region to inform the 2023 RTP.



ATTACHMENTS

1. Distributed Forecast Engagement Plan and Ground Rules
2. Local Reviewer Contact List

EXHIBITS

- A. Transportation Analysis Zone (TAZ) Map
- B. 2045 Distributed Forecast of Population, Households, and Employment

**Attachment 1**  
**Distributed Forecast Engagement Plan and Ground Rules**

| <b>Action</b>   | <b>Timeframe</b>          |
|---|---------------------------|
| Notify MTAC, TPAC of 2019 distr. forecast schedule & stakeholder engagement plan  | November 2019             |
| Complete TAZ allocations – Metro staff  | September – December 2019 |
| Contact county leads – coordinate TAZ review with each  | December 2019             |
| Obtain stakeholder signatures for es-202 employment data  | December 2019             |
| Send out TAZ forecast and es-202 task reminders – finalize by end of month  | January 2020              |
| Kick-off meetings (by county) – provide forecast materials for review <ol style="list-style-type: none"> <li>1. Review UGM regional forecast drivers</li> <li>2. Review 2019 distr. forecast specifications and assumptions</li> <li>3. Execute es202 releases for all stakeholders with the State</li> <li>4. Send out data to qualified stakeholders (excel)</li> </ol>   | January 2020              |
| Provide any material assistance as requested by local stakeholders – stakeholders review TAZ forecast figures (jobs and households) <ol style="list-style-type: none"> <li>1. Review 2020 base year figures by jurisdiction</li> <li>2. Review 2030 “mid-year” figures</li> <li>3. Review 2045/50 forecast figures</li> <li>4. Go over TAZ adjustment ground rules</li> <li>5. Send in TAZ reviews to county leads</li> </ol> | February – June 2020      |
| Adjust TAZ’s as needed  | July – August 2020        |
| Lock-down final TAZ forecast figures  | September 2020            |
| Forecast documentation, citation, and archive   | September 2020            |

Although careful attention to inputs and forecasts (and MetroScope model statistics) have been exercised in preparing the distributed forecast, current conditions and future expectations may change in which we might not have been aware of during the development of the TAZ forecast. Thus we are asking stakeholders to help us refine the initial TAZ-level forecast with additional manual (if any) adjustments based on your local knowledge. In order to maintain the integrity of the forecast, we ask participants to follow these basic guidelines on making adjustments to the TAZ forecast.

**Ground rules:**

- Each jurisdiction has been assigned a set of TAZ’s that approximate the current city limits and county jurisdiction (note: there may be rounding and estimation error / differences between city limits and TAZ boundaries that can’t be avoided).
- Cities and counties are given TAZ allocations that add up to “control totals” for each jurisdiction.
  - The ultimate control total or cap is determined by Metro’s regional forecast. (This is the total forecast amount for the region as a whole and adopted in the 2018 UGM decision)
  - Within the control totals for each jurisdiction, we advise jurisdictions to limit their manual adjustment (plus or minus) to each TAZ subject to recovering your control total.

- If your TAZ review identifies an excess (or shortfall) in your city control total, please contact your county lead to see if there is another city in your county that has a shortfall (or excess). Your county lead can assist in manually rebalancing the TAZ totals in the county.
- If the county adjustments exceed (or has a shortfall) the given county control total, Metro in coordination with the effected cities and counties will affect a compromise to settle the manual TAZ adjustments.
- Cities and counties have latitude to make adjustments, but Metro asks that the manual adjustments are paired with explanations as to why the adjustments are necessary.

Your assistance in this review process is important and helps make this a better forecast product. Thank you for your involvement in this process.

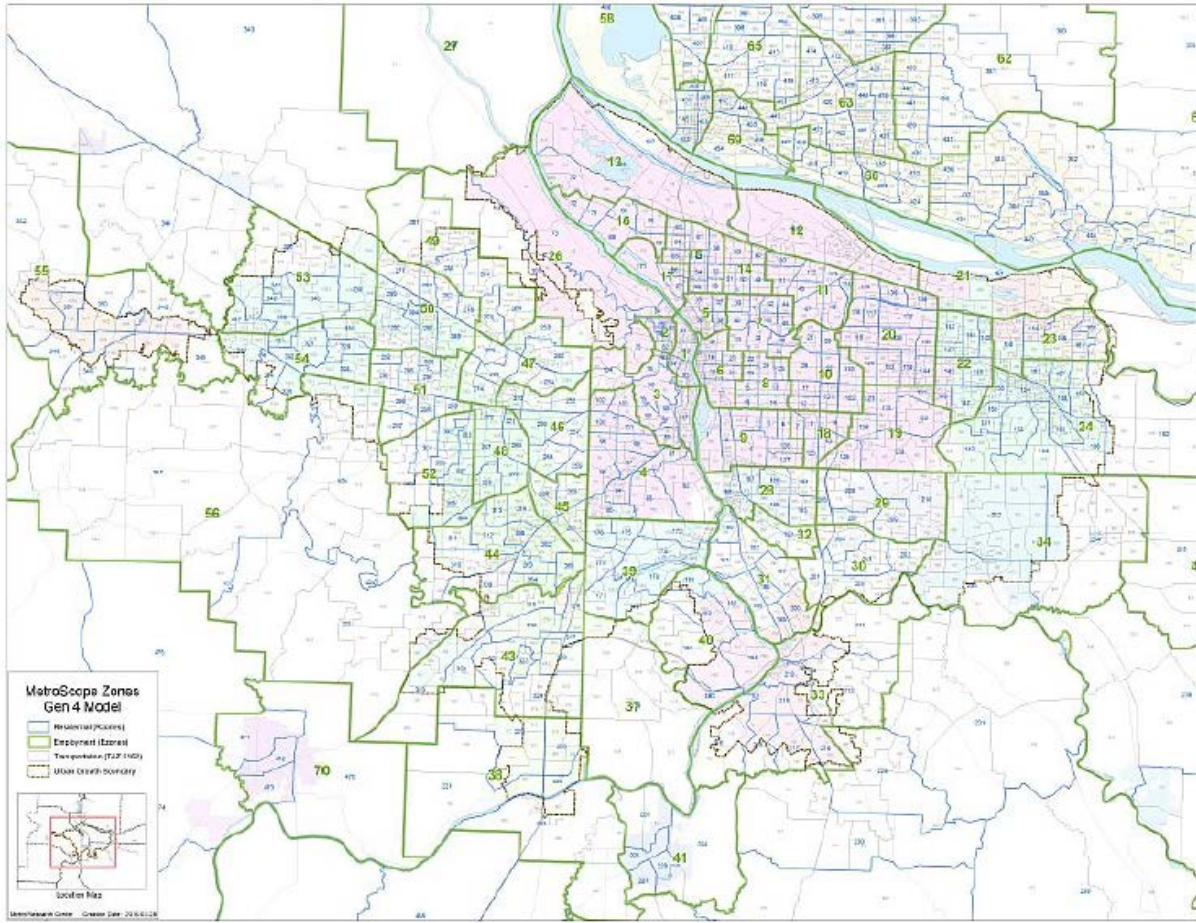
**Attachment 2**  
**Local Reviewer Contact List**

| <b>Last Name</b> | <b>First Name</b> | <b>Jurisdiction</b> | <b>County</b> |
|------------------|-------------------|---------------------|---------------|
| Seldon           | Sarah             | Fairview            | Multnomah     |
| Fry              | Carolanne         | Fairview            | Multnomah     |
| Kelly            | Katherine         | Gresham             | Multnomah     |
| Higgins          | Jay               | Gresham             | Multnomah     |
| Armstrong        | Tom               | Portland            | Multnomah     |
| Hagen            | Chet              | Multnomah County    | Multnomah     |
| Johnson          | Carol             | Multnomah County    | Multnomah     |
| Barber           | Adam              | Multnomah County    | Multnomah     |
| Berry            | Jessica           | Multnomah County    | Multnomah     |
| Cook*            | Kevin             | Multnomah County    | Multnomah     |
| Shackelford      | Amber             | Troutdale           | Multnomah     |
| Farrell          | Arini             | Troutdale           | Multnomah     |
| Straite          | Matt              | Wood Village        | Multnomah     |
| Becker           | Jolynn            | Banks               | Washington    |
| McQuillan        | Kate              | Beaverton           | Washington    |
| Wells            | Ryan              | Cornelius           | Washington    |
| Tate             | Linda             | Durham              | Washington    |
| Pohl             | Bryan             | Forest Grove        | Washington    |
| Riordan          | Dan               | Forest Grove        | Washington    |
| Eidt             | Taylor            | Hillsboro           | Washington    |
| Choi             | Brad              | Hillsboro           | Washington    |
| Liden            | Keith             | King City           | Washington    |
| Varner           | Andy              | North Plains        | Washington    |
| Palmer           | Erika             | Sherwood            | Washington    |
| Hajduk           | Julia             | Sherwood            | Washington    |
| McGuire          | Tom               | Tigard              | Washington    |
| Shanks           | Susan             | Tigard              | Washington    |
| Schulyler        | Warren            | Tigard              | Washington    |
| Purdy            | Lloyd             | Tigard              | Washington    |
| Koper            | Steve             | Tualatin            | Washington    |
| Pauly            | Daniel            | Wilsonville         | Washington    |
| Bateschell       | Miranda           | Wilsonville         | Washington    |
| Rybold           | Kimberly          | Wilsonville         | Washington    |
| Rencher*         | Ken               | Washington County   | Washington    |
| Walter           | Michael           | Happy Valley        | Clackamas     |
| Siegel           | Scot              | Lake Oswego         | Clackamas     |
| Farley           | Will              | Lake Oswego         | Clackamas     |
| Levitan          | Daniel            | Milwaukie           | Clackamas     |
| Heberling        | Mary              | Milwaukie           | Clackamas     |

| <b>Last Name</b> | <b>First Name</b> | <b>Jurisdiction</b> | <b>County</b> |
|------------------|-------------------|---------------------|---------------|
| Kolias           | Vera              | Milwaukie           | Clackamas     |
| Fadenrecht       | Christina         | Milwaukie           | Clackamas     |
| Wicks            | Alison            | Milwaukie           | Clackamas     |
| Egner            | Denny             | Milwaukie           | Clackamas     |
| Aman             | Leila             | Milwaukie           | Clackamas     |
| Straite          | Matt              | Rivergrove          | Clackamas     |
| O'Neill          | Kelly             | Sandy               | Clackamas     |
| Meharg           | Emily             | Sandy               | Clackamas     |
| Denison          | Shelley           | Sandy               | Clackamas     |
| Wyss             | Darren            | West Linn           | Clackamas     |
| Fursdon          | Megan             | West Linn           | Clackamas     |
| Buehrig          | Karen             | Clackamas County    | Clackamas     |
| Fritzie          | Martha            | Clackamas County    | Clackamas     |
| Setterfield      | Brett             | Clackamas County    | Clackamas     |
| Williams*        | Stephen           | Clackamas County    | Clackamas     |
| Cross            | Nicole            | Clackamas County    | Clackamas     |

\*Designated County Lead

### Exhibit A Transportation Analysis Zone (TAZ) Map



**Exhibit B**  
**2045 Distributed Forecast of Population, Households, and Employment**

|   | Population Forecast        |           |           |
|---|----------------------------|-----------|-----------|
|   | (adjusted to city limits)* |           |           |
|   | 2020                       | 2030      | 2045      |
| <u>Jurisdiction*</u>  |                            |           |           |
| Banks   | 1,959                      | 2,022     | 2,021     |
| Barlow  | 137                        | 130       | 119       |
| Beaverton   | 99,490                     | 114,525   | 119,156   |
| Canby   | 17,161                     | 19,582    | 19,681    |
| Cornelius   | 12,534                     | 14,606    | 17,322    |
| Durham  | 1,878                      | 1,859     | 1,793     |
| Estacada  | 4,091                      | 5,227     | 5,267     |
| Fairview  | 9,024                      | 9,538     | 9,797     |
| Forest Grove  | 26,370                     | 30,702    | 33,592    |
| Gladstone   | 11,960                     | 12,071    | 12,021    |
| Gresham   | 113,409                    | 119,476   | 122,154   |
| Happy Valley  | 22,556                     | 41,314    | 57,362    |
| Hillsboro   | 105,153                    | 122,598   | 128,270   |
| Johnson City  | 572                        | 589       | 848       |
| King City   | 4,718                      | 6,961     | 8,985     |
| Lake Oswego   | 40,035                     | 41,947    | 42,133    |
| Maywood Park  | 764                        | 730       | 724       |
| Milwaukie   | 20,594                     | 22,859    | 23,268    |
| Molalla   | 10,088                     | 14,035    | 14,160    |
| North Plains  | 3,480                      | 5,194     | 5,860     |
| Oregon City   | 36,457                     | 42,665    | 49,009    |
| Portland  | 668,429                    | 708,370   | 774,219   |
| RiverGrove  | 509                        | 483       | 449       |
| Sandy   | 11,127                     | 17,621    | 18,451    |
| Sherwood  | 19,747                     | 20,118    | 20,662    |
| Tigard  | 54,591                     | 63,813    | 71,611    |
| Troutdale   | 16,292                     | 17,385    | 17,795    |
| Tualatin  | 27,278                     | 27,598    | 27,565    |
| West Linn   | 26,060                     | 26,579    | 26,990    |
| Wilsonville   | 25,945                     | 29,756    | 30,566    |
| Wood Village  | 4,213                      | 4,814     | 5,306     |
| Unincorporated Clackamas County   | 201,322                    | 219,034   | 293,341   |
| Unincorporated Multnomah County   | 19,328                     | 22,264    | 40,490    |
| Unincorporated Washington County  | 264,884                    | 308,416   | 372,475   |
|   | 2020                       | 2030      | 2045      |
| Clackamas County, total   | 428,614                    | 493,892   | 593,665   |
| Multnomah County, total   | 831,459                    | 882,577   | 970,485   |
| Washington County, total  | 622,082                    | 718,412   | 809,312   |
|   | 1,882,155                  | 2,094,881 | 2,373,462 |
| * 2020 city limits  |                            |           |           |
| Note: All forecast figures prepared pre-COVID.  |                            |           |           |
| Note: All forecast figures prepared pre-Census 2020 vintage population program release> |                            |           |           |
| Note: 2020 is a forecast year estimate.   |                            |           |           |

|   | Household Forecast         |         |           |
|---|----------------------------|---------|-----------|
|   | (adjusted to city limits)* |         |           |
|   | 2020                       | 2030    | 2045      |
| <u>Jurisdiction*</u>  |                            |         |           |
| Banks   | 580                        | 619     | 622       |
| Barlow  | 40                         | 40      | 40        |
| Beaverton   | 39,895                     | 47,544  | 51,262    |
| Canby   | 6,564                      | 7,833   | 8,312     |
| Cornelius   | 3,773                      | 4,552   | 5,594     |
| Durham  | 686                        | 703     | 703       |
| Estacada  | 1,513                      | 2,022   | 2,246     |
| Fairview  | 3,654                      | 4,039   | 4,388     |
| Forest Grove  | 9,058                      | 10,918  | 12,380    |
| Gladstone   | 4,568                      | 4,727   | 4,777     |
| Gresham   | 41,195                     | 45,384  | 49,067    |
| Happy Valley  | 6,893                      | 13,203  | 20,210    |
| Hillsboro   | 42,338                     | 51,103  | 55,409    |
| Johnson City  | 285                        | 307     | 486       |
| King City   | 2,442                      | 3,730   | 4,990     |
| Lake Oswego   | 17,257                     | 18,909  | 19,486    |
| Maywood Park  | 356                        | 356     | 355       |
| Milwaukie   | 9,141                      | 10,611  | 11,328    |
| Molalla   | 3,363                      | 4,893   | 5,443     |
| North Plains  | 1,031                      | 1,593   | 1,862     |
| Oregon City   | 13,557                     | 16,591  | 21,010    |
| Portland  | 280,708                    | 311,084 | 359,541   |
| RiverGrove  | 185                        | 184     | 188       |
| Sandy   | 4,026                      | 6,667   | 7,696     |
| Sherwood  | 6,567                      | 6,926   | 7,372     |
| Tigard  | 21,617                     | 26,160  | 30,423    |
| Troutdale   | 5,880                      | 6,561   | 6,829     |
| Tualatin  | 10,955                     | 11,474  | 11,626    |
| West Linn   | 9,955                      | 10,617  | 11,886    |
| Wilsonville   | 9,778                      | 11,727  | 13,281    |
| Wood Village  | 1,223                      | 1,461   | 1,703     |
| Unincorporated Clackamas County   | 75,024                     | 85,357  | 126,027   |
| Unincorporated Multnomah County   | 5,588                      | 6,731   | 12,944    |
| Unincorporated Washington County  | 93,243                     | 112,396 | 140,670   |
|   | 2020                       | 2030    | 2045      |
| Clackamas County, total   | 162,149                    | 193,685 | 252,417   |
| Multnomah County, total   | 338,604                    | 375,616 | 434,827   |
| Washington County, total  | 232,184                    | 277,718 | 322,914   |
|   | 732,937                    | 847,019 | 1,010,158 |
| * 2020 city limits  |                            |         |           |
| Note: All forecast figures prepared pre-COVID.  |                            |         |           |
| Note: All forecast figures prepared pre-Census 2020 vintage population program release> |                            |         |           |
| Note: 2020 is a forecast year estimate.   |                            |         |           |



|   | <b>Employment Forecast</b> |             |             |
|---|----------------------------|-------------|-------------|
|   | (adjusted to city limits)* |             |             |
|   | <b>2020</b>                | <b>2030</b> | <b>2045</b> |
| <b><u>Jurisdiction*</u></b>   |                            |             |             |
| Banks   | 579                        | 636         | 670         |
| Barlow  | 628                        | 580         | 602         |
| Beaverton   | 63,500                     | 65,005      | 72,693      |
| Canby   | 3,863                      | 3,913       | 4,312       |
| Cornelius   | 2,873                      | 3,086       | 3,895       |
| Durham  | 1,683                      | 1,718       | 1,842       |
| Estacada  | 1,250                      | 1,354       | 1,454       |
| Fairview  | 3,048                      | 3,633       | 5,355       |
| Forest Grove  | 7,120                      | 6,964       | 7,299       |
| Gladstone   | 2,911                      | 3,159       | 3,926       |
| Gresham   | 40,562                     | 47,161      | 55,902      |
| Happy Valley  | 7,823                      | 9,105       | 12,367      |
| Hillsboro   | 84,623                     | 92,918      | 102,430     |
| Johnson City  | 317                        | 314         | 340         |
| King City   | 708                        | 879         | 1,108       |
| Lake Oswego   | 21,525                     | 21,441      | 23,825      |
| Maywood Park  | 222                        | 235         | 251         |
| Milwaukie   | 13,273                     | 13,742      | 15,221      |
| Molalla   | 3,883                      | 3,944       | 4,020       |
| North Plains  | 794                        | 860         | 897         |
| Oregon City   | 17,122                     | 18,675      | 21,749      |
| Portland  | 480,904                    | 502,913     | 565,382     |
| RiverGrove  | 135                        | 133         | 141         |
| Sandy   | 3,193                      | 3,297       | 3,675       |
| Sherwood  | 6,646                      | 7,051       | 8,013       |
| Tigard  | 45,109                     | 46,005      | 52,368      |
| Troutdale   | 7,448                      | 8,291       | 10,321      |
| Tualatin  | 34,115                     | 34,615      | 36,792      |
| West Linn   | 4,982                      | 5,365       | 6,135       |
| Wilsonville   | 20,539                     | 21,323      | 24,010      |
| Wood Village  | 2,594                      | 3,197       | 3,798       |
| Unincorporated Clackamas County   | 72,446                     | 75,446      | 90,565      |
| Unincorporated Multnomah County   | 3,849                      | 5,416       | 10,081      |
| Unincorporated Washington County  | 65,763                     | 79,192      | 103,707     |
|   | <b>2020</b>                | <b>2030</b> | <b>2045</b> |
| Clackamas County, total   | 173,891                    | 181,792     | 212,341     |
| Multnomah County, total   | 538,628                    | 570,846     | 651,090     |
| Washington County, total  | 313,513                    | 338,930     | 391,712     |
|   | 1,026,032                  | 1,091,568   | 1,255,143   |
| * 2020 city limits  |                            |             |             |
| Note: All forecast figures prepared pre-COVID.  |                            |             |             |
| Note: All forecast figures prepared pre-Census 2020 vintage population program release> |                            |             |             |
| Note: 2020 is a forecast year estimate.   |                            |             |             |