



Metro | *Memo*

Date: Friday, June 29, 2012
To: Metro
From: Pam Welch, Records and Information Analyst
Subject: Potential Missing Record – March 13, 2002 Greenspaces Technical Advisory Committee (GTAC) Agenda

An attempt was made to locate the missing record by consulting with staff and going through meeting records from 2002. However, a copy of the agenda could not be found.



METRO

TO: MPAC Parks Subcommittee
FROM: Mark Turpel
DATE: February 13, 2002
SUBJECT: Additional requested information

Attached please find a copy of the following:

1. The Most Recent Acreage The latest park acreage figures (table titled "Open Space By Type within the Metro UGB - January 2002"

By way of illustration, some examples of "Private Parks" are:

- Keller Woodlands owned by Nature Conservancy
- Dawson Creek Park owned by Dawson Creek Park Owners

Examples of "Private Open Space" are:

- land owned by Oregon Parks Foundation
- Bronson Creek Estates Open Space owned by Bronson Creek Homeowners
- Cedar Mills owned by Wetlands Conservancy
- Nike Campus Open Space owned by Nike

It should also be noted that public and private school lands are not included in this table as they are accounted for separately in Metro's Urban Growth Report. However, they are part of Metro's parks and open space coverage data layer and do provide additional open space.

2. Long Term Past Acreage Data from 1977 from the Urban Growth Boundary Findings showing the number of acres of parks and open spaces for each county and for the whole urban growth boundary (14,926 acres within the area proposed in 1977 as the region's urban growth boundary). Members had asked that we go back for a twenty-year period for data to provide more perspective. This is the only region-wide park acreage data of this vintage of which I am aware.

Comparing the 1977 data (about 14, 926 acres) with the 2002 data (26,380 acres), it shows roughly a difference of about 11,454 acres, assuming that the data are identifying "parks and open space" in the exact same way. This averages to be about 458 acres per year added within the region's urban growth boundary over this 25 year period.

3. GTAC Advice

The Greenspaces Technical Advisory Committee (GTAC), composed of local government park planners met today and discussed the three identified approaches. While there was not one perspective, there was an extensive discussion of options. Following is a summary of GTAC comments.

Project on the basis of the past. Many GTAC members supported this approach. The past ratio - 20.9 acres per acre - was seen as a level below which the region shouldn't drop. Many expressed concern that if option 2 or 3 were used, some might use a lower ratio out of context and confuse an aspirational goal with actual numbers. That is, if a lesser number were used, some might propose that the lower ratio is all that needs to be achieved. Others suggested that the current ratio should be used, but that a higher aspirational ratio should be identified and a lower ratio was what was currently being financed - just like transportation planning. Still others supported the ratio (20.9) but asked what was the need - that it could be substantially higher. Some suggested that the higher aspirational goal might be informed by national standards. Others also suggested that the current ratio should be maintained within the current UGB, but in areas newly added to the UGB, a higher standard should be established because the outlying areas were more hilly and areas like Forest Park, Powell Butte, etc. were needed as additional open space to provide a view of greenspaces and so that residents didn't feel like urban development went on indefinitely.

Separate Out Active from Passive Parks GTAC members recognized that active parks often required "developable" lands (flat lands for ball fields, etc.), and that natural areas could and often were less developable lands (steep slopes, streams, etc.). Some suggested that lands owned by the public as "people places" - not just unusable areas left over from development - should be addressed.

Use Local Standards or Capabilities Members recognized that local System Development Charges (SDC's) were available to buy additional parks and open spaces. As part of the work needed to approve SDC's local governments put together a land acquisition forecast. Some suggested that these should be gathered from the local governments and used as a basis for an estimation. It was pointed out that the SDC's, by law, could only keep a current ratio and could not address deficits, that they only covered a portion of total costs and that they did not address land price increases.

Other GTAC Comments

Combine All Three Methods - Some GTAC members suggested that the three methods all had strengths and weaknesses and by combining them a better estimate could be obtained.

Consider Federal Purchases. - It was pointed out the Federal Government was planning additions to the wildlife refuge in the Sherwood/Tualatin area.

Use State Survey - a new State survey of parks and open space has been completed and could help inform the process.

Fill Any Gaps with a Regional SDC - Some suggested that where there was a gap between the region-wide level and local park ratio, a regional SDC surcharge should be explored to help ensure that in the long run the gap would be addressed.

Double Edged Sword. - Some indicated that the question was difficult to answer as an estimate of the amount of estimated future parks provided no guarantees that additional parks would actually be acquired and that it could be that the region's UGB was expanded, in part to accommodate new parks, but the reality could be that few additional new parks might be added.



The Stafford Basin Pathway and Trail Plan is a long-range strategy for the acquisition, development, and management of a system of public pathways for transportation and recreation in the Stafford Basin. The Stafford Basin is located in unincorporated Clackamas County north of 205, west of West Linn, south of Lake Oswego, and east of Tualatin.

The Stafford Basin Pathway and Trail System:

- Enables the public to better enjoy existing preserved open space.
- Provides safe travel from one part of the Basin to another via pedestrian and/or bicycling routes.
- Serves as a classroom for appreciation of natural and historic resources in the area.

What is the Pathway & Trail Plan?

The National Park Service's Rivers and Trails (RTCA) program provided technical assistance with community involvement, development of the Concept Plan and creation of maps and brochures. Portland State University's School of Urban and Regional Planning initiated public outreach. An Advisory Committee including 24 citizens and representatives from the involved jurisdictions met regularly and guided the process.

In 1997, a Three Rivers Land Conservancy inventory of the Basin's natural and scenic resources led to the acquisition of three properties totaling 61 acres and the donation of two conservation easements. The inventory also recognized the need for connections between publicly owned properties as well as public access in the Basin. Three Rivers received private foundation funding and collaborated with the National Park Service and Portland State University to create a Pathway & Trail System Concept Plan for the Stafford Basin.

How it all began...



- Present the Plan for adoption by involved jurisdictions.
- Create a steering committee and/or citizen support group for implementation of Plan.
- Establish new trail segments.
- Develop a plan for maintenance and operations.
- Construct trails.

Next Steps



- 5,500 flyers and surveys mailed to Stafford Basin residents and surrounding areas inviting them to a public meeting and trail hikes
- An initial public forum held with 25 citizens attending in June 2001
- 450 citizens returned the survey, with over 80% of respondents expressing a need for a Stafford Basin Pathway & Trail System
- Door-to-door surveys completed at 200 homes with 30% participation
- One public trail building workday held
- Two additional meetings held in October and December 2001 for public input

Community Involvement



The Vision

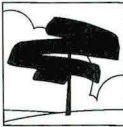
The Stafford Basin is a landscape with unique natural, cultural and geologic features, which contribute to the health and vitality of the community. The Stafford Basin Pathway and Trails System provides access to these features and connections with the surrounding communities while respecting and preserving the integrity and functions of habitats.

This pathway and trail system serves a variety of uses: a) Recreation, including hiking, walking, bicycling, horseback riding, and wildlife viewing; b) Transportation; c) Education about natural and cultural resources; and d) natural connections for wildlife to move safely between habitats.

This pathway and trail system is cooperatively created and maintained by users, neighbors, local governments, and business organizations.

Regional Representation

Clackamas County
Coles Environmental Planning
City of Lake Oswego
Lake Oswego Hikers and Ramblers
Metro Regional Government
NPS – Rivers & Trails Program
Oregon Dept. Fish & Wildlife
Portland State University
Stafford Basin Residents
Three Rivers Land Conservancy
Volkswalk
City of West Linn
West Linn Senior Center



Three Rivers Land Conservancy
PO Box 1116
Lake Oswego, OR 97035
Phone: 503-699-9825 Fax: 503-699-9827
Web: www.trlc.org

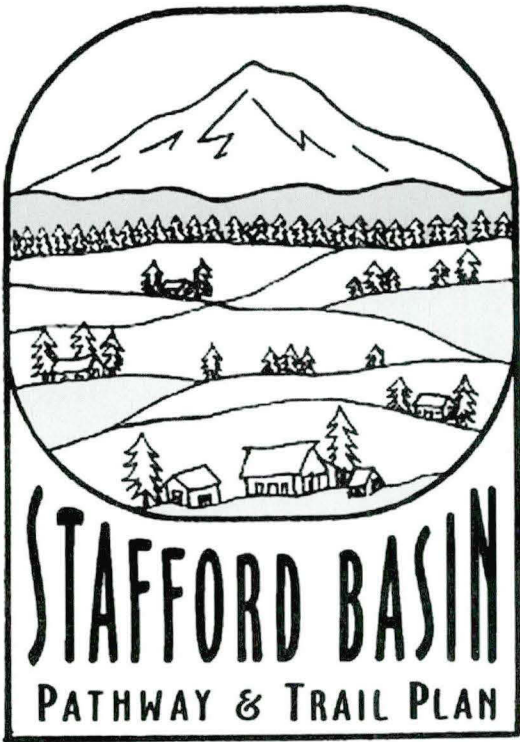
Three Rivers Land Conservancy is a nonprofit organization managed by an Executive Director through a local all-volunteer board of directors. As a land trust, Three Rivers is largely supported through individual membership donations and citizen-led efforts. The land trust is dedicated to promoting and protecting open space in metropolitan Portland including scenic and recreational areas, wildlife habitat and historic resources.



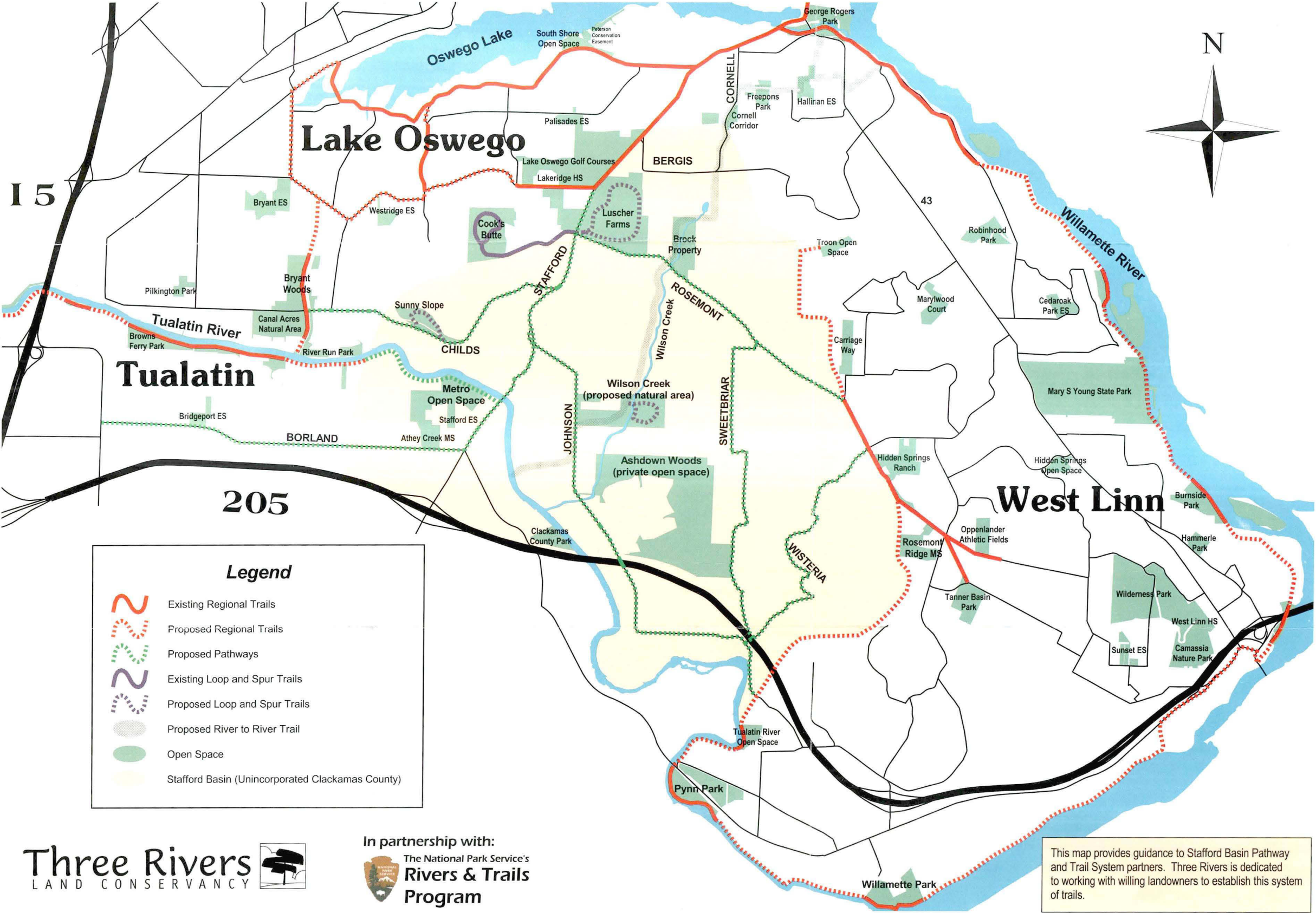
National Park Service - Rivers, Trails, and Conservation Assistance (RTCA) program
909 First Avenue
Seattle, Washington 98104
(206) 220-4113
<http://www.nrcr.nps.gov/rtca/>

The "Rivers and Trails" program is a national network of professionals who assist communities at their request with projects based on local natural, cultural, and recreational resources. The Rivers & Trails philosophy on conservation projects is based on four principles: community initiative; cost-sharing; cooperation; and results.

Three Rivers
LAND CONSERVANCY



Stafford Basin Pathway & Trail System



KEY

PATHWAYS:

Alternate paved transportation routes adjacent to roads and separated from the road by landscaping when possible.

LOOP AND SPUR TRAILS:

Soft surface trails upon existing conserved properties that allow opportunities to stop and enjoy the natural resources of the Basin. These meandering trails do not correspond to roadways and will provide scenic, historic and wildlife viewing destinations.

River to River Trail:

An off-road pathway connecting the Willamette River with the Tualatin River. It will be part of the metropolitan regional trails system. Conceptual alignment will follow the Wilson Creek corridor south of Bergis Road taking advantage of the Brock property acquired by the City of Lake Oswego. North of Bergis Road the alignment has several possible routes through the City of Lake Oswego.

This map provides guidance to Stafford Basin Pathway and Trail System partners. Three Rivers is dedicated to working with willing landowners to establish this system of trails.

March 4, 2002

Dear Recreation Provider:

As you know, the Oregon Parks and Recreation Department (OPRD) is currently in the process of developing a Statewide Comprehensive Outdoor Recreation Plan (SCORP) for the state of Oregon. As part of this planning effort, OPRD staff recently completed a series of eleven regional "recreational issues workshops" across the state. We would like to thank those who participated in these valuable workshops.

A primary objective of the "public provider" workshops was to identifying the top three Land & Water Conservation Fund (LWCF) issues (related to land acquisition, facility development, and major rehabilitation) in each of the eleven SCORP Planning Regions. This workshop process identified the *need for major rehabilitation of existing outdoor recreation facilities* as a top statewide LWCF issue (top issue in 9 of the 11 SCORP Planning Regions). Recreation providers report that the existing recreational infrastructure (utilities, roads, and buildings, etc.) is aging and in need of major rehabilitation. *Note: A full listing of issues gathered during the workshops are available on the SCORP Planning Website at www.prd.state.or.us/scorp.php under the heading "Regional Outdoor Recreation Issues."*

Now that the need for major rehabilitation has been identified as a key statewide issue, our challenge is to properly address the issue in the 2003-2007 SCORP plan. Towards this end, OPRD and the Oregon Recreation and Park Association (ORPA) have developed a method for collecting major rehabilitation data from non-Federal, public-sector recreation providers across the state of Oregon. This data collection process is designed to:

- develop a basic understanding of the relative health of the recreational infrastructure in the state,
- identify the specific types of facilities in need of major rehabilitation at the regional and statewide level,
- identify the specific reasons why the facilities are in need of major rehabilitation at the regional and statewide level, and
- establish a baseline measurement for measuring rehabilitation progress across time.

The purpose of this letter is to request your assistance in identifying the number of outdoor recreational facilities that your agency/organization manages that are in need of major rehabilitation. The information that you provide will be used for statewide planning purposes only. Information that your agency/organization provides will not be used to later evaluate your specific LWCF major rehabilitation grant requests. *Note: Federal agencies currently identify critical rehabilitation projects using a more technical set of maintenance/rehabilitation definitions.*

Please use the attached Major Rehabilitation Reporting Instruction Sheet to complete the SCORP Major Rehabilitation Reporting Form. This packet of information is available in downloadable format on our SCORP planning website at www.prd.state.or.us/scorp_rehab.php. After completing the SCORP Major Rehabilitation Reporting Form, please return it using the postage-paid envelope provided. Please mail the completed forms by April 15, 2002. If you have any questions, please contact Terry Bergerson by phone: 503.378.4168 x 305, fax: 503.378.6447 or email: terry.bergerson@state.or.us.

Thank you for your cooperation with this important matter.

Sincerely,



Terry Bergerson
SCORP Planner

Major Rehabilitation Reporting Instruction Sheet

Important Note: The information that your agency/organization provides in this reporting exercise will be used for statewide planning purposes only. The information will not be used to later evaluate your specific LWCF major rehabilitation grant requests. For reporting consistency, it is essential that you follow this set of instructions while completing the SCORP Major Rehabilitation Reporting Form.

Step 1 Before starting this reporting exercise, please check to see that you have the following materials:

- a Facility and Reporting Measure List,
- a Life Expectancy Schedule of Recreational Areas and Facilities,
- an Oregon SCORP Planning Regions map,
- a SCORP Major Rehabilitation Reporting Form, and
- a postage-paid return envelope.

If you are missing any of these materials, please contact Terry Bergerson at 503.378.4168 x 305 (phone) or email (terry.bergerson@state.or.us).

Step 2 Please use the following definition for identifying major rehabilitation projects.

Major Rehabilitation Projects involve the restoration or partial reconstruction of eligible recreation areas and facilities, which is necessitated by one or more of the following:

- the recreation area or facility is beyond its normal life expectancy (please use the "Life Expectancy Schedule of Recreational Areas and Facilities" to help make this determination),
- the recreation area or facility is destroyed by fire, natural disaster or vandalism,
- the recreation area or facility does not meet health & safety codes/requirements,
- the recreation area or facility requires rehabilitation to insure critical natural resource protection,
- the recreation area or facility does not meet access requirements of the Americans with Disabilities Act, and
- changing recreation needs (e.g., changes in demographics within the service area) dictate a change in the type of recreation area or facility provided.

Important Note: Please do not report routine maintenance or repair work as major rehabilitation. Routine maintenance/repair includes work such as cleanup, painting, and minor repairs of buildings, structures, equipment and utilities merely maintaining portions of such facilities in a sound and useful state.

Step 3 Please review the Facility and Reporting Measure List. The list includes all types of areas and facilities currently eligible for Land and Water Conservation Fund (LWCF) funding as major rehabilitation projects. Use this list as a guide for reporting all facilities managed by your agency/organization currently in need of major rehabilitation. The list includes:

- **Facility Category:** This column is included for organizational purposes only. Please do not report the "Facility Category" name on the SCORP Rehabilitation Reporting Form.
- **Facility Type:** Please report all facilities using the specific "Facility Type" names included in this column (e.g., report the name such as tent campsite, asphalt trail, irrigation system, and so forth) on the SCORP Rehabilitation Reporting Form.
- **Reporting Measure:** Please use the corresponding "Reporting Measure" for each Facility Type to report the number of facilities or projects your agency/organization currently manages in need of major rehabilitation (e.g., when reporting the number of tent campsites in need of major rehabilitation, you would report the *number of sites needing major rehabilitation*).

Step 4 *You are now ready to complete the SCORP Major Rehabilitation Reporting Form. Please use the following instructions for completion of the form. Refer to the Sample SCORP Major Rehabilitation Reporting Form example as you read through the Step 4 instructions.*

- Use the specific instructions described in Step 2 and Step 3 to identify all facilities/projects managed by your agency/organization currently in need of major rehabilitation.
- For each major rehabilitation facility/project reported, record the specific "Facility Type" name from the Facility and Reporting Measure List under Column 1 of the SCORP Major Rehabilitation Reporting Form.
 - ✓ On the sample reporting form, we are reporting tent campsite, outdoor pool, gravel parking and playground.
- Report the number of facilities/projects in need of Major Rehabilitation for each Facility Type (reported in Column 1) under Column 2 of the SCORP Major Rehabilitation Reporting Form. As stated in Step 3, use the appropriate "Reporting Measure" from the Facility and Reporting Measure List.
 - ✓ On the sample reporting form, we are reporting 16 tent campsites, 1 outdoor pool, 3 acres of gravel parking and 1 playground.
- Using the attached Oregon SCORP Regions map, report the SCORP planning region number (1-11) where the facilities/projects are located under Column 3 of the Major Rehabilitation Reporting Form.
 - ✓ On the sample reporting form, we have reported all facilities/projects in Region 2.
- Finally, report the primary reason for the major rehabilitation for each facility/project under Column 4 of the Major Rehabilitation Reporting Form. Make sure that you record a single reason for each facility/project recorded in Column 2.
 - ✓ On the sample reporting form, we are reporting 14 tent campsites under has exceeded normal life expectancy and 2 under does not meet current ADA standards, 1 outdoor pool under has exceeded normal life expectancy, 3 gravel parking acres under destroyed by fire, natural disaster or vandalism and 1 playground under changing recreation needs.

Important Note: The numbers reported in Column 4 should add up to the total reported in Column 2 for each Facility Type reported.

Step 5 *Finally, return your completed SCORP Major Rehabilitation Reporting Form to Oregon Parks and Recreation Department by April 12, 2002 in the postage-paid return envelop provided. If you can't locate the envelope, please send the forms to the following address:*

Oregon Parks and Recreation Department
1115 Commercial Street NE
Salem, Oregon 97301-1002
Attn: Terry Bergerson

If you have any questions, please contact Terry Bergerson by phone: 503.378.4168 x 305, fax: 503.378.6447 or email: terry.bergerson@state.or.us

SCORP Major Rehabilitation Reporting Form

Provider Name: Leisureville Parks and Recreation Department

Provider Number: (For OPRD Use Only) _____

Column #1 Facility Type in Need of Major Rehabilitation		Column #2 Number of Facilities/ Projects in Need of Major Rehab	Column #3 SCORP Planning Region	Column #4 Primary Reason for Major Rehabilitation					
				Has exceeded normal life expectancy	Destroyed by fire, natural disaster or vandalism	Does not meet health & safety codes/ requirements	Provide critical resource protection	Does not meet current ADA standards	Changing recreation Needs
1.	<i>Tent Campsite</i>	<i>16 sites</i>	<i>2</i>	<i>14</i>				<i>2</i>	
2.	<i>Outdoor Pool</i>	<i>1 pool</i>	<i>2</i>	<i>1</i>					
3.	<i>Gravel Parking</i>	<i>3 acres</i>	<i>2</i>		<i>3</i>				
4.	<i>Playground</i>	<i>1 playground</i>	<i>2</i>						<i>1</i>
5.									
6.									
7.									
8.									
9.									
10.									

Facility and Reporting Measure List

Facility Category	Facility Type	Reporting Measure
Campground		
	Tent Campsite	Number of sites needing major rehab
	RV/Trailer Campsite	Number of sites needing major rehab
	Group Campground	Number of campgrounds needing major rehab
	Day Camp	Number of camps needing major rehab
Picnic		
	Family Picnic Site	Number of sites needing major rehab
	Group Picnic Shelter	Number of shelters needing major rehab
Golf Course		
	Regular Golf Course	Number of major rehab projects
	Par 3 Golf Course	Number of major rehab projects
	Golf Driving Range	Number of major rehab projects
Swimming		
	Indoor Pool	Number of pools needing major rehab
	Outdoor Pool	Number of pools needing major rehab
	Bath House	Number of buildings needing major rehab
Boating/Fishing		
	Motorized Boat Ramp (Concrete)	Number of ramps needing major rehab
	Motorized Boat Ramp (Asphalt)	Number of ramps needing major rehab
	Boat Berth/Dock	Number of berths/docks needing major rehab
	Fishing Pier	Number of piers needing major rehab
Trail		
	Asphalt Trail	Linear miles needing major rehab
	Concrete Trail	Linear miles needing major rehab
	Natural/Native Material Trail	Linear miles needing major rehab
	ATV Trail	Linear miles needing major rehab
	Motorcycle/Dual Sport Trail	Linear miles needing major rehab
	Four-Wheel Driving (4x4) Trail	Linear miles needing major rehab
	Snowmobile Trail	Linear miles needing major rehab
	Boardwalk	Linear miles needing major rehab
	Trail Bridge	Number of bridges needing major rehab
Winter Sports		
	Indoor Skating Rink	Number of rinks needing major rehab
	Outdoor Skating Rink	Number of rinks needing major rehab
	Warming Hut	Number of huts needing major rehab
Support		
	Park Walkway/Sidewalks (Concrete)	Linear feet needing major rehab
	Park Walkway/Sidewalks (Asphalt)	Linear feet needing major rehab
	Park Landscaping	Number of major rehab projects
	Asphalt Road	Linear miles needing major rehab
	Concrete Road	Linear miles needing major rehab
	Gravel Road	Linear miles needing major rehab
	Asphalt Parking	Acres needing major rehab
	Concrete Parking	Acres needing major rehab
	Gravel Parking	Acres needing major rehab
	Road Bridges	Number of bridges needing major rehab

Facility and Reporting Measure List (Continued)

Facility Category	Facility Type	Reporting Measure
Support (Cont.)		
	Restroom Building	Number of buildings needing major rehab
	Concession Building	Number of buildings needing major rehab
	Maintenance Building	Number of buildings needing major rehab
	Security Lighting	Number of major rehab projects
	Electrical System	Number of systems needing major rehab
	Sewage Disposal System	Number of systems needing major rehab
	Water Treatment System	Number of systems needing major rehab
	Irrigation System	Number of systems needing major rehab
	Fuel Storage Facility	Number of facilities needing major rehab
Interpretive		
	Outdoor Informational Kiosk	Number of kiosks needing major rehab
	Visitor Information or Interpretive Center	Number of buildings needing major rehab
Sports& Playfields		
	Playground	Number of playgrounds needing major rehab
	Baseball/Softball Field	Number of fields needing major rehab
	Football/Soccer Field	Number of fields needing major rehab
	Concrete Basketball Court	Number of courts needing major rehab
	Asphalt Basketball Court	Number of courts needing major rehab
	Concrete Tennis Court	Number of courts needing major rehab
	Asphalt Tennis Court	Number of courts needing major rehab
	Sports & Playfield Lighting	Number of major rehab projects
	Track Facility	Number of facilities needing major rehab
	Skate Park - Concrete	Number of parks needing major rehab
	Skate Park - Wood	Number of parks needing major rehab
Other		
	Amphitheater/Band Shell	Number of buildings needing major rehab

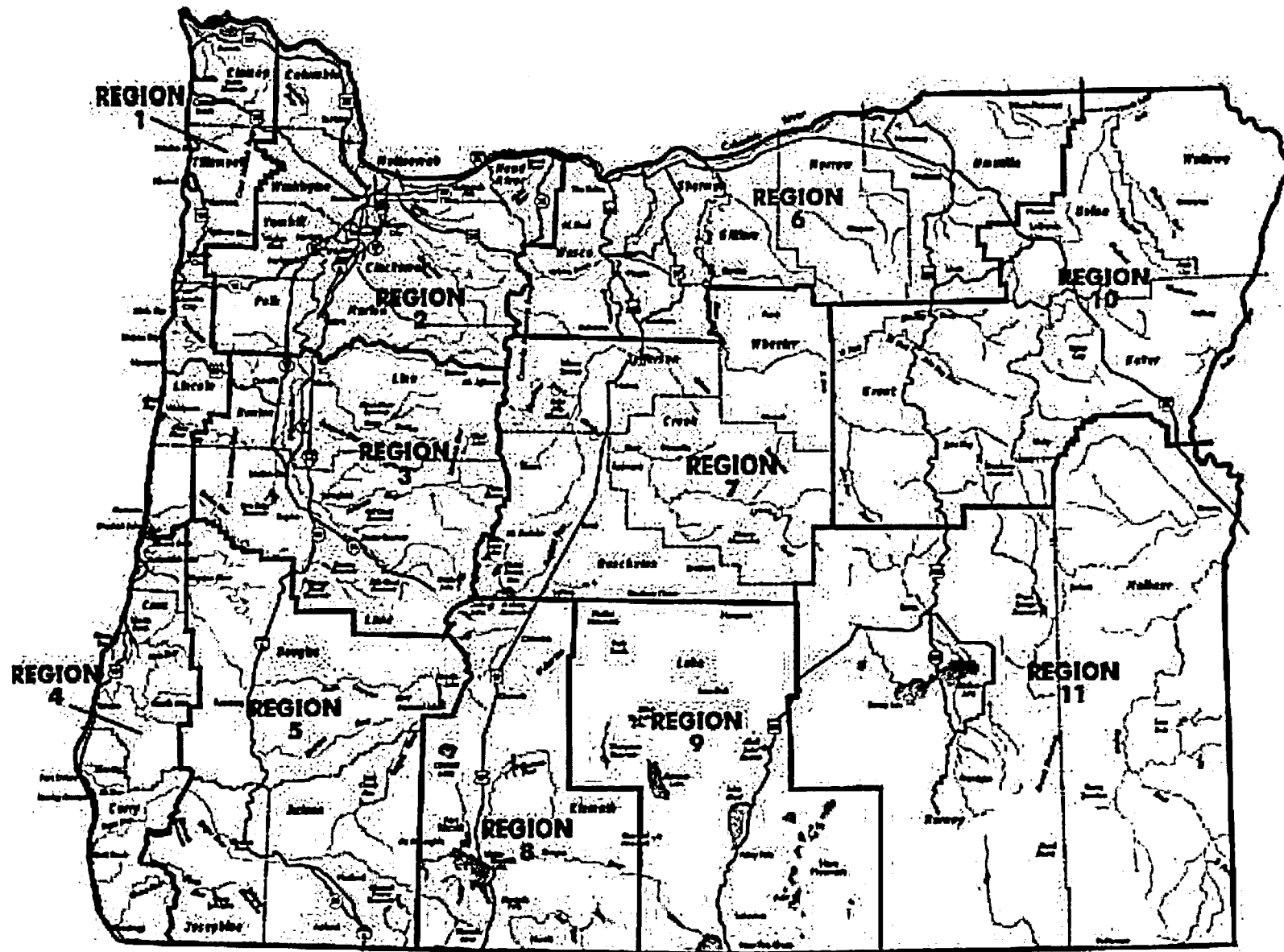
Life Expectancy Schedule of Recreation Areas & Facilities

Recreation Area/Facility	Estimated Life Expectancy
Campground Facilities	
Tent Campsite	30 - 40 years
RV/Trailer Campsite	30 years
Group Campground	30 - 40 years
Day Camp	30 - 40 years
Picnic Areas	
Family Picnic Site	10 to 15 years
Group Picnic Shelter	15 to 20 years
Golf Course Areas	
Regular Golf Course	50 to 75 years
Par 3 Golf Course	30 to 50 years
Golf Driving Range	20 to 30 years
Swimming Facilities	
Indoor Pool	20 to 30 years
Outdoor Pool	15 to 20 years
Bath House	15 to 20 years
Boating/Fishing Facilities	
Motorized Boat Ramp (Concrete)	20 to 50 years
Motorized Boat Ramp (Asphalt)	15 to 20 years
Berth/Dock/Piers	15 to 35 years
Fishing Pier	30 to 50 years
Trail Facilities	
Asphalt Trail	5 to 20 years
Concrete Trail	30 to 50 years
Natural/Native Material Trail	Varies - use/weather/soil
ATV Trail	Varies - use/weather/soil
Motorcycle/Dual Sport Trail	Varies - use/weather/soil
Four-Wheel Driving (4x4) Trail	Varies - use/weather/soil
Snowmobile Trail	Varies - use/weather/soil
Boardwalk	10 to 15 years
Trail Bridge	15 to 20 years
Winter Sports Facilities	
Indoor Skating Rink	30 - 40 years
Outdoor Skating Rink	15 - 20 years
Warming Hut	25 - 30 years

Life Expectancy Schedule of Recreation Areas & Facilities (Cont.)

Recreation Area/Facility	Estimated Life Expectancy
Support Facilities	
Park Walkway/Sidewalks (Concrete)	30 - 50 years
Park Walkway/Sidewalks (Asphalt)	5 - 20 years
Park Landscaping	20 - 25 years
Asphalt Road	20 years
Concrete Road	40 years
Gravel Road	<5 years
Asphalt Parking	30 - 40 years
Concrete Parking	50 years
Gravel Parking	10 years
Road Bridges	30 - 50 years
Restroom Building	15 - 30 years
Concession Building	15 - 20 years
Maintenance Building	20 - 30 years
Security Lighting	10 - 15 years
Electrical System	25 - 30 years
Sewage Disposal System	20 years
Water Treatment System	10 - 15 years
Irrigation System	10 - 20 years
Fuel Storage Facility	25 - 30 years
Interpretive Facilities	
Outdoor Informational Kiosk	10 - 50 years
Visitor Information or Interpretive Center	20 - 30 years
Sports & Playfields	
Playground	10 - 20 years
Baseball/Softball Field	15 - 20 years
Football/Soccer Field	5 - 10 years
Concrete Basketball Court	30 - 50 years
Asphalt Basketball Court	5 - 10 years
Concrete Tennis Court	30 - 50 years
Asphalt Tennis Court	5 - 10 years
Sports & Playfield Lighting	20 - 25 years
Track Facility	5 - 10 years
Skate Park - Concrete	25 - 30 years
Skate Park - Wood	3 - 5 years
Other Facilities	
Amphitheater/Band Shell	20 - 30 years

OREGON SCORP PLANNING REGIONS REFERENCE MAP



SCORP Major Rehabilitation Reporting Form

Provider Name:**Provider Number: (For OPRD Use Only)**[illegible]

SCORP Major Rehabilitation Reporting Form (Continued)[illegible]

REGION 2 ISSUES (BEAVERTON)

(Region 2 includes Columbia, Washington, Multnomah, Hood River, Yamhill, Clackamas, Polk and Marion Counties)

Public Recreation Provider Session

Top LWCF Issues

45. Funding priority for land acquisition to keep pace with population growth and rising land costs.

Land acquisition of open space in high-growth areas to satisfy current needs and banking for future needs. Identify and purchase key parcels before being acquired by developers or land values rise to the point of being unaffordable.

46. Funding priority for major rehabilitation of existing outdoor recreation facilities.

The current recreational infrastructure (utilities, roads, and buildings) is aging and in need of major rehabilitation. Statewide standards are needed to determine design life and budget needs associated with facility maintenance (deferred maintenance results in the need for major rehabilitation). State should consider reducing the grant applicant match (currently 50%) for rehabilitation projects to provide an incentive for recreation providers to catch up on current rehabilitation backlog.

47. Funding priority for recreational trail (non-motorized) connectivity.

Specific examples of trail types include hiking, biking and equestrian trails (multiple-use trails). Funding priority should be given to projects linking local, regional, and federal trail systems. The objective is to connect communities, existing park and natural areas, and outlying federal trails into an inter-jurisdictional trail system.

Other LWCF Issues

48. Need for additional indoor pools within the region. Indoor pools provide recreation and education opportunities for people in all age groups and help to satisfy fitness and health needs. Although indoor pool facilities are very costly, they are often the center of community recreation facilities, with links to other dry land facilities.

49. Need for additional picnic areas and facilities (e.g., shelters, toilets, picnic tables).

50. Need for additional children's playgrounds.

51. Need for recreational facilities that satisfy the needs of people of all ages.

52. Respond to the need for new, non-traditional extreme sports areas and facilities as they emerge.

53. Need for additional sports and play fields including soccer and baseball/softball fields, and basketball courts. Such facilities are of particular importance for providing at-risk-youth with rewarding recreational experiences.

54. Need for retrofitting of existing facilities for ADA accessibility. Region should develop a comprehensive approach to establish accessibility consistency across the region.

55. Need for continuous public greenway and pathway systems including all-weather pathways.
56. Need for a water trail system with water access locations and established paddling routes.
57. Need for more motorized trails (ATV, motorcycle) and new motorized areas within the region.
58. Need to fund rehabilitation of existing motorized trails/ areas and support facilities. There is a need to bring existing trails up to a level of standard that minimizes user damage and provides year-round riding opportunities (especially in high rain areas in coastal areas).
59. Need to identify, acquire, and protect potential rock climbing areas within the region. We need to recognize that rock climbing is a specialized use requiring training and unique resource acquisitions.
60. Need for additional interpretive and educational facilities such as kiosks, sign structures, and waysides.
61. Need to identify and acquire access for potential kite boarding areas within the Columbia River Gorge. Safety is a major concern between kite boarders and wind surfers. Kite boarders require separate sites.
62. Need for facility development on undeveloped recreation land (banked sites) to satisfy recreational needs in areas with high population growth.
63. Need for basic water-based recreation support facilities in the region.
64. Need for added campground areas and facilities, especially in Washington County.
65. Need for additional group camps and day use areas.
66. Need for additional RV dump stations.

General Issues

67. Recognition of the need for local planning and coordinated regional planning. There is a strong need to fund regional planning efforts. The provision of recreational opportunities across the region should be viewed as a seamless system which promotes interagency and public-sector recreation cooperation and coordination.
68. There is a need for basic design standards for recreational facility design and rehabilitation to avoid inefficient and costly approaches. We need to better define the levels of quality/cost for various facilities.
69. There is a need for a set of outdoor recreation space standards within the region.
70. There is a need to share expertise and equipment among providers to increase the efficient use of existing resources within the region (through interagency agreements).

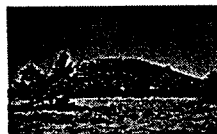
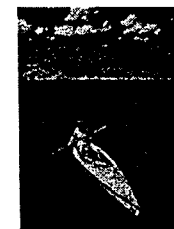
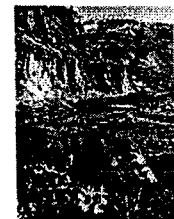
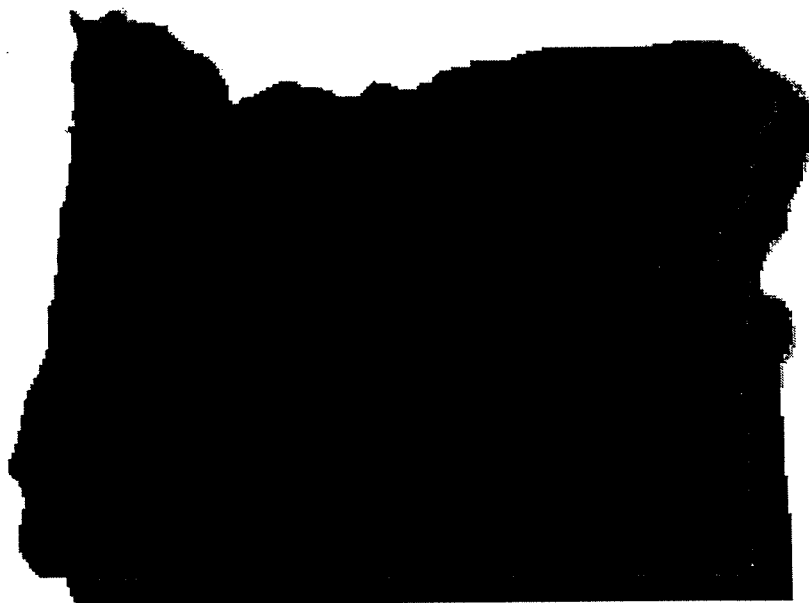
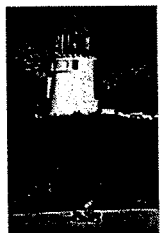
71. There is a need to examine the allocation of LWCF dollars within the region. There is a bias towards communities who are committed to funding recreational facilities. This creates an imbalance of funding allocation within the region (haves vrs. have not).
72. There is a general lack of consistent funding to satisfy an increasing need for outdoor recreational resources and facilities within the region.
73. A greater emphasis should be made within the region to strike a balance between protecting natural resources and providing outdoor recreational opportunities. There is an inherent conflict between providing adequate natural resource buffer areas and providing public access to these resource areas.
74. There is a need to develop educational programming to encourage responsible recreation behavior in forested recreational areas.
75. There is a need for better management planning for protection of existing recreational facilities (e.g. from target shooting).
76. An effort should be made to increase recreational use in the regions outstanding natural areas. The goal is to increase dispersed recreational use, while making better use of existing recreational areas and facilities.
77. There is a need for better interagency coordination in providing information regarding available outdoor recreation opportunities within the region (e.g., multi-provider brochures, maps and marketing efforts).
78. There is a need for better information/direction regarding the use of recreational use fees within the region. A plan should be developed to identify where fees are appropriate, the influence of fees on visitor behavior, and the best methods of implementing a fee program.
79. There is a strong need for the state to update the statewide trails plan. The plan should examine use of all types of trails (motorized and non-motorized) and include the participation of state, federal, county, and municipal providers and advocacy groups.
80. There is a need to provide better guidance for recreation providers in the LWCF application process and to streamline the application process. There should be a pre-qualification process to make sure that applicants are meeting the basic requirements of the grant proposal process. In addition, final presentations should be made by a short list of superior grant proposals. This will reduce the amount of work that applicants put into the application process if their proposal has little or no chance of being funded. The state should store basic application information to allow for ease of reapplication in upcoming funding cycles. The state should also carry unfunded projects to the next year's application process (similar to the Marine Board).
81. Support for LWCF applications including multiple projects, service areas, and jurisdictions. Funding priority should be given to joint projects involving the participation of multiple organizations/agencies. We want to encourage more partnerships (public/private and public/public) in recreational service provision. Such partnerships result in greater funding and maintenance and operation efficiency.

82. LWCF funding should be allocated in proportion to population density. Funding should be directed towards more densely populated areas within the region. The rule allowing only one application per city during a LWCF funding cycle negatively affects the distribution of grant dollars by population density.
83. There is a need to establish a process for evaluating regional LWCF proposals not addressing either the top 3 regional LWCF issues or resource/facility needs identified in the SCORP needs assessment ("exceptions to the rule" grant proposals). Such proposals should not be automatically eliminated during the grant evaluation process.
84. This region draws large numbers of visitors from outside the region who use existing outdoor recreational resources and facilities. There is a need for additional LWCF funding to compensate for the additional facility requirements associated with this additional visitation.
85. There should be a stronger service emphasis on core community recreation sites and facilities. LWCF funding priority should be given to providing "basic services" at the local level (as opposed to special services). Examples of "basic services" include playgrounds, organized sports facilities, skate parks, and general picnicking facilities.
86. There is a growing trend toward increased loss of recreational use of private lands and public lands within the region (gated roads and trails). We need to figure out a way to address this growing problem. Part of the solution is to provide more law enforcement partnerships to reduce the levels of drug use, vandalism and illegal dumping (cars, appliances, garbage, etc.) in recreation areas, especially in urban interface areas.
87. The SCORP plan should address recreational needs associated with an increasingly diverse cultural community within the region.
88. City recreation departments provide additional "social services" which dilute recreation funding.
89. Recreation providers often encounter difficulties in finding adequate supplies of available, affordable and developable land for recreation facilities. In part, this problem exists as a result of state land use laws. In particular, the availability of land for urban recreation facilities is affected by statewide land use goals that effectively prohibit the development of such facilities outside of urban growth boundaries (UGB). As a result of these laws, developable land inside of the UGB's is in high demand, which tends to elevate land prices to the extent to which they are often too expensive for recreational use. The more affordable land, more cost effective for recreational purposes, can only be found outside of the UGB's. This more affordable land is often not located in close proximity to where the recreation demands exist, and cannot be used for urban recreation unless the state law restrictions can be overcome through the "goal exception" process.
90. There is a need to examine potential funding source opportunities among various outdoor recreation user groups in the state. In Minnesota, canoe and snowmobile permits revenues have been used to develop water and snowmobile trail opportunities in the state. Canoe permit revenues could be used to fund a water trail system and other water-based recreation facilities in the state of Oregon. In addition, some states have used taxes on specific sporting goods items to fund outdoor recreation facility development. The first step is to identify potential coalitions of supporters who would be advocates for a similar effort

in Oregon. For such strategies to work, recreationists need to see a direct benefit to their particular user group.

91. An effort should be made to target user groups and non-profit organization members as volunteers to support recreational programs. To accomplish this, we need agency support in the form of staffing and services funding. In addition, "exceptions" in contracting regulations must be identified to allow participation by non-profit organizations and volunteers.
92. A large portion of LWCF funds allocated to the state of Oregon are appropriated to Federal agencies. The non-Federal allocation is not proportional to the recreational facilities provided by non-Federal recreation providers in the state. The stateside portion of LWCF grant dollars allocated to the state of Oregon should be increased.
93. The SCORP plan needs to make a strong statement that local government is a part of the seamless system of outdoor recreation providers in Oregon, as well as the nation. Many Americans turn first to their local park system when seeking outdoor recreation experiences. For people whose limited income could restrict them from traveling to a state federal park, a city or county park might be their only option for outdoor recreation.
94. The SCORP needs to define how local government fits into the state's recreation system. Past grant applications have asked how proposed projects meet SCORP goals and objectives. For many local projects, the SCORP has not adequately addressed local governments' role in Oregon's outdoor recreation facilities system. To be an effective planning tool, the SCORP needs to describe how local agencies fit into the big picture.
95. Lack of adequate funding continues to make operating outdoor recreation facilities difficult. Unlike state and county agencies, placing charges on most of the outdoor recreation facilities local government operates is not feasible. Furthermore, local parks might provide the only opportunities for many to recreate. User fees could discourage visits to these parks. Most municipalities do not dedicate specific dollars for park operation. Parks compete with law enforcement, fire, library and a myriad of other demands for local general fund revenue.

Oregon Outdoor Recreation Survey



Department of Forest Resources
Oregon State University
280 Peavy Hall – Corvallis, OR 97331-5703

Please read all directions and answer the following questions concerning outdoor recreation in Oregon as accurately as possible.

Section 1: Picnicking, Sightseeing, and Touring Activities

Q1. Please look at the activities listed in the table below. Did you or any member of your household participate in any of these activities in Oregon during the past THREE months?

___ NO ___ YES

- If NO, please move on to **Section 2**.
- If YES, please fill out the following chart only for the activities that you or a household member did in the past THREE months.

Activity	# Of times	Average # of household members that participated	# That occurred on weekends or holidays	Average trip length (days)	Name of county or nearest city where most trips occurred
Picnicking					
Sightseeing/driving for pleasure					
Train or bus touring					
Visiting cultural or historical sites, museums					

Section 2: Non-motorized Snow Activities

Q2. Please look at the activities listed in the table below. Did you or any member of your household participate in any of these activities in Oregon during the past THREE months?

___ NO ___ YES

- If NO, please move on to **Section 3**.
- If YES, please fill out the following chart only for the activities that you or a household member did in the past THREE months.

Activity	# Of times	Average # of household members that participated	# That occurred on weekends or holidays	Average trip length (days)	# That occurred at a commercial ski area	# That occurred at a backcountry area	Name of county or nearest city where most trips occurred
Downhill skiing, snowboarding or telemarking							
Sledding or general snow play							

Section 3: Fishing, Crabbing, and Clamming Activities

Q3. We would like to know where you did your fishing, crabbing, or clamming in Oregon and what kind of water body you used. Did you or any member of your household participate in any of these activities in Oregon during the past THREE months?

___ NO ___ YES

- If NO, please move on to **Section 4**.
- If YES, please fill out the following chart only for the activities that you or a household member did in the past THREE months.

Fishing Activities

Activity Location	# Of times	Average # of household members that participated	# That occurred on weekends or holidays	Water body type where most time was spent (please check)	Average length of trip (days)	Name of county or nearest city where most trips occurred
Fishing from a boat				___ Lake ___ Ocean ___ River		
Fishing from a bank or shore				___ Lake ___ Ocean ___ River		
Fishing from a dock or pier				___ Lake ___ Ocean ___ River		

Crabbing Activities

Crabbing from a boat				___ Lake ___ Ocean ___ River		
Crabbing from a bank or shore				___ Lake ___ Ocean ___ River		
Crabbing from a dock or pier				___ Lake ___ Ocean ___ River		

Clamming Activities

Clamming				___ Lake ___ Ocean ___ River		
----------	--	--	--	------------------------------------	--	--

Section 4: Boating Activities

Q4. Now we want to look at BOATING activities other than fishing, crabbing, and clamming. Please look at the activities listed in the table below. Did you or any member of your household participate in any BOATING activities in Oregon during the past THREE months?

___ NO ___ YES

- If NO, please move on to Q5.
- If YES, please fill out the following chart only for activities that you or a household member did in the past THREE months.

Activity	# Of times	Average # of household members that participated	# That occurred on weekends or holidays	Water body type where most time was spent (please ✓)	Average length of trip (days)	Name of county or nearest city where most trips occurred
Canoeing				___ Lake ___ Ocean ___ River		
Sea Kayaking				___ Lake ___ Ocean ___ River		
White-Water Kayaking				___ Ocean ___ River		
White-Water Rafting				___ River		
Personal watercraft (jetski, waverunner, etc.)				___ Lake ___ Ocean ___ River		
Power boating for pleasure (excludes fishing & waterskiing)				___ Lake ___ Ocean ___ River		
Sailing				___ Lake ___ Ocean ___ River		
Water-skiing or other towing water sports				___ Lake ___ Ocean ___ River		
Windsurfing				___ Lake ___ Ocean ___ River		

Q5. For any FISHING or BOATING and WATER Activities, did you or any member of your household use a boat ramp during the last THREE months?

___ NO ___ YES

- If NO, please move on to **Section 5**.
- If YES, please indicate the following concerning boat ramp use in the **past THREE months**:

# Of times	Name of county or nearest city where most use occurred	# That occurred on weekends or holidays

Section 5: Hunting and Shooting Activities

Q6. Please look at the activities listed in the table below. Did you or any member of your household participate in any of these activities in **Oregon** during the last **THREE months**?

___ NO ___ YES

- If NO, please move on to **Section 6**.
- If YES, please fill out the following chart only for the activities that you or a household member did in the **past THREE months**.

Activity	# Of times	Average # of household members that participated	# That occurred on weekends or holidays	Average trip length (days)	Name of county or nearest city where most trips occurred	# Of times an ATV was used
Big game hunting (rifle)						
Big game hunting (bow)						
Waterfowl hunting						
Upland bird and small game hunting						
Trapping						
Rifle/pistol target shooting						
Skeet/trap/sporting clay shooting						
Archery (target shooting)						

Section 6: Nature Study Activities

Q7. Please look at the activities listed in the table below. Did you or anyone in your household participate in any of these activities in **Oregon** during the **past THREE months**?

___ NO ___ YES

- If NO, please move on to **Section 7**.
- If YES, please fill out the following chart only for activities that you or a household member did in the **past THREE months**.

Note! To figure out which activity best matches what you did, look at the primary purpose of your outing. Was it to look at wildlife or to take photos? Was it to watch birds or other kinds of wildlife?

Activity	# Of times	Average # of household members that participated	# That occurred on weekends or holidays	Average length of trip (days)	Name of county or nearest city where most trips occurred
Bird watching					
Nature/wildlife observation					
Outdoor photography					
Tracking animal signs					

Section 7: Swimming and Beach Activities

Q8. Please look at the activities listed in the table below. Did you or anyone in your household participate in any of these activities in **Oregon** during the **past THREE months**?

___ NO ___ YES

- If NO, please move on to **Section 8**.
- If YES, please fill out the following chart only for activities that you or a household member did in the **past THREE months**.

Note! SWIMMING and BEACH activities include tanning, surfing, or swimming in the surf, but do not include walking or running on the beach, fishing, crabbing, or clamming. Those activities are counted in Sections 3 or 10.

Activity	# Of times	Average # of household members that participated	# That occurred on weekends or holidays	# Of trips you got in the water	# Of times you took a dog	Average length of trip (days)	Name of county or nearest city where most trips occurred
Freshwater Beach Activities							
Ocean Beach Activities							
Swimming in an outdoor pool					N/A		
SCUBA diving or snorkeling					N/A		

Section 8: Camping Activities

Q9. Now we would like to know about your **CAMPING** activities in Oregon, excluding camping you may have done while backpacking. Please look at the activities listed in the table below. Did you or any member of your household participate in any of these activities in **Oregon** during the **past THREE months**?

☐ NO ☐ YES

- If NO, please move on to **section 9**.
- If YES, please fill out the following chart only for activities that you or a household member did in the **past THREE months**.

Note! To fill out the last column, please check the one type of campsite that you used **MOST** often during each kind of camping activities. Please refer to the following definitions:

Developed site: Usually well-marked campsites that can include picnic tables, fire rings, or nearby restrooms. Developed sites are typically found at designated campgrounds.

Dispersed site: Undeveloped, undesignated sites that typically are not a part of a camping facility.

Group site: These are sites that are officially designed to hold more occupants than a typical campsite and are found within a designated campground.

Type of camping activity	# Of times	Average # of household members that participated	# That occurred on weekends or holidays	Average trip length (days)	Name of county or nearest city where most trips occurred	Type of campsite used most often (please <input checked="" type="checkbox"/>)
Bicycle camping						<input type="checkbox"/> Developed <input type="checkbox"/> Dispersed <input type="checkbox"/> Group
Boat camping						<input type="checkbox"/> Developed <input type="checkbox"/> Dispersed <input type="checkbox"/> Group
Horseback camping						<input type="checkbox"/> Developed <input type="checkbox"/> Dispersed <input type="checkbox"/> Group
Camping on ocean beach						<input type="checkbox"/> Developed <input type="checkbox"/> Dispersed <input type="checkbox"/> Group
RV/trailer camping						<input type="checkbox"/> Developed <input type="checkbox"/> Dispersed <input type="checkbox"/> Group
ATV camping						<input type="checkbox"/> Developed <input type="checkbox"/> Dispersed <input type="checkbox"/> Group
Car camping with a tent						<input type="checkbox"/> Developed <input type="checkbox"/> Dispersed <input type="checkbox"/> Group

Section 9: Outdoor Sports and Games Activities

Q10. Please look at the activities listed in the table below. Did you or anyone in your household participate in any of these activities in **Oregon** during the **past THREE months**?

___ NO ___ YES

- If NO, please move on to **Section 10**.
- If YES, please fill out the following chart only for activities that you or a household member did in the **past THREE months**.

Note! Park playground equipment refers only to children's play equipment, such as swings or jungle gyms. It **does not** refer to softball fields, soccer fields, or basketball courts.

Activity	# Of times	Average # of household members that participated	# That occurred on weekends or holidays	Name of county or nearest city where most trips occurred
Golf				
Baseball				
Football/rugby				
Ultimate Frisbee				
Frisbee golf				
Hang gliding				
Skydiving				
Rock Climbing				
Outdoor court games (volleyball, badminton)				
Outdoor basketball				
Outdoor tennis				
Soccer				
Softball				
Using park playground equipment (see note)				

Section 10: Trail, Road, and Beach Activities

Q11. Please look at the activities listed in the tables below. Did you or anyone in your household participate in any of these activities in Oregon during the past THREE months?

___ NO ___ YES

- If NO, please move on to **Section 11**.
- If YES, please fill out the following charts only for the activities that you or a household member did in the past THREE months.

Non-motorized Activities

Activity	# Of Times	Average # of household members that participated	# That occurred on weekends or holidays	# Of times you took a dog	Average length of trip (days)	Name of county or nearest city where most trips occurred
Backpacking						
Biking						
Cross-country skiing/snowshoeing						
Hiking						
Orienteering						
Horseback riding						
In-line skating/skateboarding						
Running/walking for exercise						
Walking for pleasure						

Motorized Activities

All-terrain vehicle riding (see note)						
Dune buggy riding						
Four-wheel driving (see note)						
Motorcycling (dual sport or dirt bike)						
Snowmobiling						
Other snow vehicle riding						

Note! All-terrain vehicle riding includes 3 and 4 wheel straddle the saddle vehicles. Four-wheel driving includes jeeps, pickups, SUV's, etc.

Now we would like to know about the kinds of trails and roads you or members of your household used when doing an activity in Oregon. Please check the **ONE** category where the **MOST** time was spent for each activity during the past **THREE** months. If you did not participate in an activity, please leave its spaces blank.

Note! Use the following list of trail and road types to help you fill out the tables.

Local Community Trail: Any pathway within or nearby a city or town designated for use by the general public, but not normally designated for use by motorized vehicles.

Local Community Sidewalk/Street: Any sidewalk or designated bikeway along a roadway.

Backcountry Trail: Trails located in a more primitive setting, in remote areas or a natural state with limited development (e.g., National Forest trails).

Backcountry Road: Any unpaved roads through public or private lands, such as gravel logging roads.

Designated All-Terrain Vehicle (ATV) Road or Trail: Trails marked specifically for ATV's.

Cross-Country: Any cross-country travel not utilizing a marked trail or road and excluding ocean beaches.

Ocean Beach: Any Oregon ocean shoreline.

Sand Dune: Any Oregon sand dune designated for recreational use (e.g., Sand Lake, Christmas Valley, or Oregon Dunes National Recreation Area).

Non-motorized Activities (please check)

Activity	Local Community Trail	Local Community Sidewalk/Street	Back-country Trail	Back-country Road	Designated ATV Road or Trail	Cross-Country	Ocean Beach	Sand Dune
Backpacking								
Biking								
X-C skiing/snowshoeing								
Hiking								
Orienteering								
Horseback riding								
In-line skating/skateboarding								
Running/walking for exercise								
Walking for pleasure								

Motorized Activities (please check)

All-terrain vehicle riding								
Dune buggy riding								
Four-wheel driving								
Motorcycling (dual sport or dirt bike)								
Snowmobiling								
Other snow vehicle riding								

Next we want to know about the type of trails and roads that were used. For each activity you or a household member did, please check the **ONE SURFACE TYPE** where the **MOST** time was spent for each activity during the last **THREE** months. If you did not participate in an activity, please leave its spaces blank.

Non-motorized Activities (please check)

Activity	Paved (blacktop, concrete, etc.)	Not Surfaced (dirt/natural surface)	Surfaced (gravel, woodchips, etc.)	Groomed (snow activities only)
Backpacking				
Biking				
Cross-country skiing/snowshoeing				
Hiking				
Orienteering				
Horseback riding				
In-line skating/ skateboarding				
Running/walking for exercise				
Walking for pleasure				

Motorized Activities (please check)

Activity	Designated trail or route	Off trail
All-terrain vehicle riding		
Dune buggy riding		
Four-wheel driving		
Motorcycling (dual sport or dirt bike)		
Snowmobiling		
Other snow vehicle riding		

Section 11: Additional Activities

Q12. In the **past three months**, did you or any members of your household participate in any additional outdoor recreation activities in **Oregon** not mentioned in any of the above sections?

☐ NO ☐ YES

- If NO, please move on to **Section 12**.
- If YES, please list the following:

Type of Activity

Of times

Section 12: Recreation Settings

Q13. What is your FAVORITE outdoor recreation activity that you did in Oregon MOST OFTEN during the last THREE months? (Please answer only for yourself.)

Favorite outdoor recreation activity: _____

Q14. Review the recreation settings listed below. In the left column, check the ONE setting where you do your favorite activity MOST OFTEN. In the right column, check the ONE setting where you would PREFER to do your favorite activity most often.

(please check)

Place Used	Place Preferred
	<p>Primitive: An unmodified, natural setting where you will meet few, if any, other people. Access is cross-country travel to fairly difficult trails. Motorized use is prohibited. Recreation facilities are generally not provided.</p>
	<p>Semi-primitive: A predominantly natural environment where you will occasionally meet other people. Access is generally by trail. Primitive roads may exist, but are often closed to motorized use. Few recreation facilities are provided. Those that exist are minimal and rustic.</p>
	<p>Roaded Natural: Forest, range, and coastal settings that generally appear natural or slightly altered. Access is by trail, road, or highway. Expect to meet moderate numbers of people. Recreation facilities such as developed campgrounds may exist. There may also be some opportunities away from others in spots with no facilities.</p>
	<p>Roaded Modified: Settings where nature has obviously been altered through such activities as timber harvesting, mining, farming, or grazing. Road access is usual. Developed campgrounds may be available in some locations. Expect to meet other people in trucks, cars and on motorbikes. One may be able to get away from others in remote camp spots.</p>
	<p>Rural: Rural area where development such as farms, houses, stores, or equipment is commonly visible. Access is by paved road and the interaction between people can be moderate to high. Rustic bathrooms and showers, some electricity, lighted fields, etc. may be provided. Facilities for motorized use and parking are available.</p>
	<p>Highly Developed: A largely developed setting with extensive paving and buildings, highly maintained vegetation, heavy interaction and visitor controls within an open space context. Examples would be interpretive centers, ski areas, or major camping areas within a larger National Forest or Oregon State Park.</p>
	<p>Nature-dominant within Urban: Apparently undisturbed, natural environment, with limited development within an urban context. Expect moderate to high interaction and visual or noise disturbance. An example would be a nature preserve within a city.</p>
	<p>Park-like within Urban: Primarily maintained grass and shade tree environment within an urban setting. There will be moderate to extensive facilities, and a heavy amount of interaction between people. An example would be a day use or picnic area within a city.</p>
	<p>Facility-dominant within Urban: Predominantly built setting of pavement and structures, intended for leisure or recreation use within the urban context. Expect a high level of interaction, management, and visitor controls. Areas may include small areas of grass, other vegetation, and/or shade trees growing within a paved area. Examples would be paved plaza parks or ornamental gardens.</p>

Section 13: Demographic and Other Information

Q15. How many people currently live in your household? _____

Q16. What is your household's current annual income before taxes? Include all persons that regularly live at this household. (Check one)

<input type="checkbox"/> Less than \$9,999	<input type="checkbox"/> \$25,000 to \$39,999	<input type="checkbox"/> \$64,000 to \$134,999
<input type="checkbox"/> \$10,000 to \$24,999	<input type="checkbox"/> \$40,000 to \$63,999	<input type="checkbox"/> More than \$135,000

Q17. In the last 3 months, did you or any member of your household visit an Oregon State Park?

☐ NO ☐ YES

- If NO, move on to **Q21**.

Q18. During any of these visits, did you or any member of your household feel crowded by either people or vehicles?

☐ NO ☐ YES

- If NO, move on to **Q21**.
- If YES, what is the name of the Oregon State Park? _____
- Where in this Oregon State Park were you or any member of your household when you felt crowded?

Q19. At this specific Oregon State Park location mentioned in Q18, how crowded did you or a member of your household feel? Please circle one number.

1	2	3	4	5	6	7	8	9
Not at all		Slightly			Moderately		Extremely	
Crowded		Crowded			Crowded		Crowded	

Q20. What time of the day was it when you felt crowded? Please circle all that apply.

MORNING
(Before noon)

AFTERNOON
(Noon-6pm)

EVENING
(After 6pm)

Q21. How do you or members of your household obtain information about recreational areas in the state of Oregon? Please check all that apply.

<input type="checkbox"/> Received no information	<input type="checkbox"/> Travel Guide/Tour Book
<input type="checkbox"/> Previous visits	<input type="checkbox"/> Maps
<input type="checkbox"/> Friends or relatives	<input type="checkbox"/> Brochures
<input type="checkbox"/> Magazine story or ad	<input type="checkbox"/> Newspaper story or ad
<input type="checkbox"/> TV/Radio	<input type="checkbox"/> Telephone inquiry to park or agency
<input type="checkbox"/> Written inquiry to park or agency	<input type="checkbox"/> Highway signs
<input type="checkbox"/> Travel agent	
<input type="checkbox"/> Internet, site used most often: _____	
<input type="checkbox"/> Other, please specify: _____	

Any comments you have about outdoor recreation in the state of Oregon are welcomed. Please use the space below.

Thank you for your help!

SCORING EXAMPLES

1. Instream Habitat Protection/Restoration

ii)Stream channels are in good condition for providing salmonid habitat, with naturally protected stream banks, meandering channel, and large and small wood structure.

This standard applies to

- a) known and potential fish-bearing streams and
- b) non-fish bearing perennial or intermittent streams greater than two feet width at ordinary high water that are connected to fish bearing streams.

1. Instream Habitat Protection/Restoration

ii)Stream channels

A maximum score (+3) is achieved when the following performance indicators are observed:

- (a) Type of bank protection – Stream banks are well stabilized by vegetation.
- (b) Inventory – Stream channels are identified, classified, and mapped.
- (c) Channelization – The stream has an intact natural channel and floodplain.
- (d) Artificial ponds – Artificial ponds do not occur, or if they do occur, they provide adequate fish passage, habitat, and do not warm downstream waters to unsafe levels for salmonids (21 degrees Celsius).
- (e) Large wood management – The channel has large wood in it and wood from riparian areas and beaver activity is not removed.
- (f) Restoration effort – A plan is being implemented that shows significant yearly progress toward ensuring that stream channel deficiencies are addressed.

SCORING GUIDELINES

1. Instream habitat protection and restoration
2. Riparian and wetland protection and restoration
3. Water use management (irrigation activities)
4. Surface water runoff management
5. Erosion control
6. Chemical and nutrient containment

SCORING GUIDELINES

- +3 Full compliance with the management objective.
- 0 Marginally acceptable compliance with the management objective or the score assigned to an irrelevant or non-applicable practice.
- 3 Significant or total non-compliance with the management objective.

Decision Rule for Certification

To meet the requirements for certification under the Salmon Safe program, each of the program categories must result in a neutral or positive computed score (i.e. 0 or greater than 0).

1. Instream Habitat Protection/Restoration

ii)Stream channels

A minimum score (-3) is achieved when the following performance indicators are observed:

- (g) Type of bank protection – Stream banks are turf grass, raw and eroding, or hardening with riprap or concrete.
- (h) Inventory – Stream channels are not mapped.
- (i) Channelization – The stream has been artificially channelized.
- (j) Artificial ponds – Artificial ponds occur that do not provide fish passage or habitat and unduly warm downstream waters.
- (k) Large wood management – The channel has very little or no wood structure due to lack of riparian forest, lack of beaver, and/or removal by humans.
- (l) Restoration effort – No plan is being implemented that shows significant yearly progress toward ensuring that stream channel deficiencies are addresses.

2. Riparian and Wetland Protection/Restoration

This category applies only in Parks where streams, wetlands, or their riparian zones occur within Park boundaries. This category applies to

- a) known and potential fish-bearing streams and
- b) non-fish bearing perennial or intermittent streams greater than two feet width at ordinary high water that are connected to fish bearing streams.

i) Riparian areas are in good condition, functioning to maintain and restore stream health, including shade, wood recruitment, leaf litter supply, and stream bank stability and cover, and filtration of sediment.

2. Riparian and Wetland Protection/Restoration

i) Riparian areas

A maximum score (+3) is achieved when the following performance indicators are observed:

- (a) Buffer zone width – Protected riparian zones on known or potential fish-bearing streams are a minimum of 50 feet wide on each side of the stream. Protected riparian zones are a minimum of 25 feet on each side of other qualifying streams.
- (b) Inventory – All riparian areas are identified, classified, and mapped.
- (c) Native and non-native plant species present – Riparian zones are dominated by a diversity of native plant species.
- (d) Vegetation maturity – Riparian zone vegetation is dominated by mid- or late-successional species and sizes (forest at least 30 years old where they occurred historically).
- (e) Restoration effort – A plan is being implemented that shows significant yearly progress toward ensuring that riparian condition deficiencies are addressed.

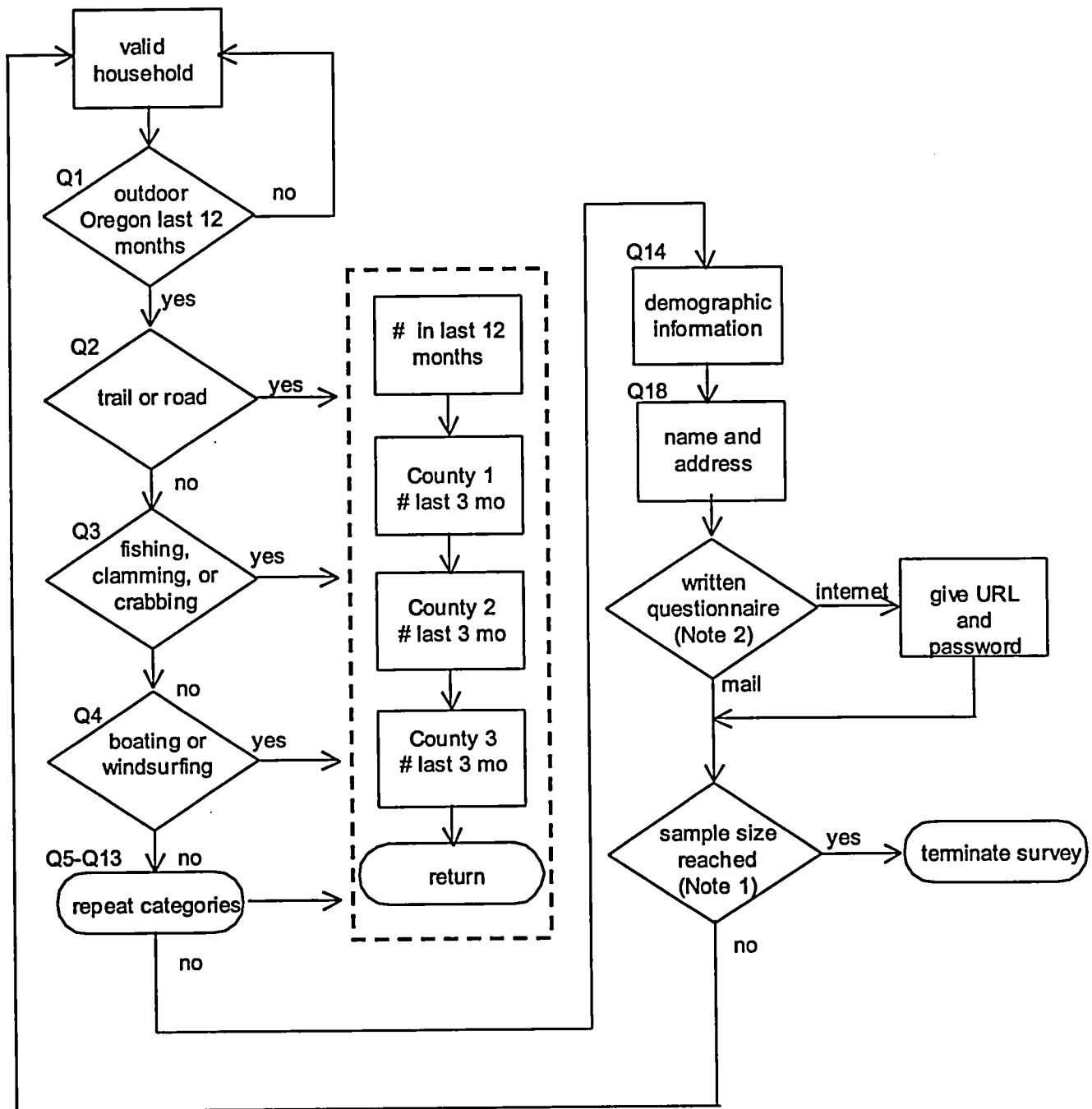
2. Riparian and Wetland Protection/Restoration

i) Riparian areas

A minimum score (-3) is achieved when the following performance indicators are observed:

- (f) Buffer zone width – Protected riparian zones average less than 10 feet wide on each side of the stream. Human impacts to vegetation and soils, such as trampling by Park users, mowing, or tree cutting, are relatively common within 100 feet of the stream.
- (g) Inventory – Riparian areas are not mapped.
- (h) Native and non-native species present – Riparian zones are dominated by non-native species.
- (i) Vegetation maturity – Riparian zone cover is dominated by early successional species (grass turf, shrubs).
- (j) Restoration effort – A plan is not being implemented that shows significant yearly progress toward ensuring that riparian condition deficiencies are addressed.

STATEWIDE COMPREHENSIVE OUTDOOR RECREATIONAL PLAN TELEPHONE SURVEY COMPONENT INSTRUMENT SKIP CHART



- Notes: 1. Sample size is minimum 4,411 completed interviews for in-state households and 800 minimum for out-of-state households. Fifty percent of the in-state interviews shall be completed in September with the other 50 percent evenly distributed to March, June, and December. One hundred percent of the out-of-state interviews shall be completed in September.
2. It is expected that at least 50 percent of the completed telephone interviews will cooperate in supplying a name and address for a written questionnaire.

SCORP
TELEPHONE SURVEY COMPONENT

Instrument Revision: Sept 19th, 2001

Precode

Telephone: _____

RESULTS

Date	Time	Interviewer	Results Code	Duration	Gender	Comments

RESULT AND PATH CODES

<u>Make callbacks</u>	<u>Do not make callbacks</u>	<u>Path</u>	
01 No answer	05 Business phone	DK	- Don't know, or refuse except demographic
02 Busy	06 Disconnect		
03 Answering machine	07 Language barrier	DNR	- Do not read, but probe for additional responses
04 Respondent not available	08 Refused		
	09 Terminate survey		
	10 Other [SPECIFY]	ALL	- Mark all that are mentioned
	20 Complete	SINGLE	- Mark only first mentioned
		italics	- Supply information from previous response

CALL BACK DIALOG

Your household's response is really valuable for statistical reasons. Would there be a better time I could call you or another member of your household to complete the interview?

_____ Respondent's first name, if given
 _____ Call back time and date
 _____ Other disposition code

TERMINATE DIALOG

This completes the interview. Do you have any comments about the survey? For example, are there any other outdoor recreation activities that I have not mentioned? **(IF NO COMMENTS)** Thank you very much for your time. We really appreciate your cooperation. Goodbye.

INTRODUCTION

Hello, this is _____ with Market Decisions, a research firm in Portland, Oregon. We have been asked by Oregon State Parks to obtain information from households who might use outdoor recreation facilities in Oregon. To do this, we are calling over 5,000 randomly selected households to ask a few questions about their outdoor recreation activities.

I realize your time is valuable and want to remind you that your participation is completely voluntary. You can refuse to answer any questions or end the conversation at any point. Answers will remain confidential and your name will not be associated with any responses.

If respondent sounds younger than 18 → Are you the most knowledgeable regarding the outdoor activities your household participates in?

OPTIONAL

The survey will take about five minutes and I think you will find it interesting. If you complete the telephone interview and a written questionnaire, we will enter your name into a drawing. The prizes are free annual passes into any State park and coupons for seven free nights stay. I realize your time is valuable. Do you have at least five minutes to help us with this survey?

Yes → CONTINUE

No → READ CALL BACK DIALOG

I would like to describe some examples of outdoor recreation activities. They include walking or running along trails and roads, fishing and hunting, swimming and boating, camping, bird watching, sightseeing, going to museums or historical sites, and playing organized sports like golf, softball, etc. There are a lot more examples I could give, but I just want to get you thinking about activities in which you or any members of your household might participate.

Q1 First, have you, or has anyone in your household, participated in any *outdoor recreation* in Oregon over the last 12 months?

- 1 No → READ TERMINATE DIALOG, NOTE RESULTS
- 2 Yes

Q2 I would like to ask you just a few quick questions about **twelve** different types of outdoor recreation activities in which your household participates. Please respond only for recreation activities that took place in **Oregon**.

Think about trail or off-trail activities, including hiking, backpacking, mountain biking, cross-country skiing, orienteering, or horseback riding. How many times did you, or someone in your household, participate in these trail activities in Oregon during the past 12 months?

RECORD # TIMES

888 None → GO TO Q3
998 Refused → GO TO Q3
997 Don't know → GO TO Q3

Q2A Of those (INSERT NUMBER OF TIMES), how many took place in the last three months?

RECORD # TIMES

888 None → GO TO Q3
998 Refused → GO TO Q3
997 Don't know → GO TO Q3

Q2B In which Oregon counties (or nearest cities) did you, or someone in your household, participate in these trail activities during the last three months?

11 BAKER (Baker, Haines, Sumpter, Unity)
12 BENTON (Corvallis, Monroe, Philomath)
13 CLACKAMAS (Timberline Lodge, Ski Bowl, Government Camp, Estacada, Molalla, Lake Oswego, Rhododendron, West Linn)
14 CLATSOP (Astoria, Cannon Beach, Gearhart, Seaside)
15 COLUMBIA (Clatskanie, Rainier, St. Helens, Vernonia)
16 COOS (Bandon, Coos Bay, Coquille, Myrtle Point, North Bend)
17 CROOK (Paulina, Prineville)
18 CURRY (Brookings, Gold Beach, Harbor, Port Orford)
19 DESCHUTES (Bend, La Pine, Mt. Bachelor, Redmond, Sunriver)
20 DOUGLAS (Drain, Myrtle Creek, Riddle, Roseburg, Sutherlin, Diamond Lake)
21 DOUGLAS COASTAL (Gardiner, Reedsport, Scottsburg, Winchester Bay)
22 GILLIAM (Arlington, Condon, Lonerock)
23 GRANT (Dayville, Granite, John Day, Seneca)
24 HARNEY (Burns, Hines)
25 HOOD RIVER (Hood River, Mt. Hood Meadows, Cooper Spur)
26 JACKSON (Ashland, Medford, Prospect)
27 JEFFERSON (Cove Palisades, Culver, Madras, Warm Springs)
28 JOSEPHINE (Cave Junction, Grants Pass, Merlin)
29 KLAMATH (Bly, Chiloquin, Crater Lake, Crescent, Gilchrist, Klamath Falls)
30 LAKE (Lakeview, Paisley)
31 LANE (Cottage Grove, Eugene, Junction City, Springfield, Willamette Pass)
32 COASTAL LANE (Dunes City, Florence, Mapleton)
33 LINCOLN (Depoe Bay, Lincoln City, Newport, Yachats, Waldport)
34 LINN (Albany, Sweet Home)
35 MALHEUR (Ontario)
36 MARION (Detroit, Mt. Angel, Salem, Silverton, St. Paul, Stayton)
37 MORROW (Boardman, Heppner, Irrigon)
38 MULTNOMAH (Gresham, Portland)
39 POLK (Dallas, Grande Ronde, Monmouth)
40 SHERMAN (Moro, Rufus, Wasco)
41 TILLAMOOK (Manzanita, Prairie City, Rockaway, Tillamook)
42 UMATILLA (Hermiston, Milton-Freewater, Pendleton, Pilot Rock, Ukiah, Umatilla)
43 UNION (Elgin, La Grande, Union)
44 WALLOWA (Enterprise, Hells Canyon, Lostine, Wallowa)
45 WASCO (Antelope, Maupin, The Dalles)
46 WASHINGTON (Banks, Forest Grove, Tigard, Tualatin)
47 WHEELER (Fossil, Mitchell, Spray)
48 YAMHILL (Dundee, McMinnville, Newberg)
99 OTHER (SPECIFY) _____

Q3 Think about motorized outdoor recreation activities, including ATV riding, dune buggy riding, 4-wheel driving, off-road motorcycling, snowmobiling or other snow vehicle riding. How many times did you, or someone in your household, participate in these motorized activities in Oregon during the past 12 months?

_____**RECORD # TIMES**
888 None → GO TO Q4
998 Refused → GO TO Q4
997 Don't know → GO TO Q4

Q3A Of those (INSERT NUMBER OF TIMES), how many took place in the last three months?

_____**RECORD # TIMES**
888 None → GO TO Q4
998 Refused → GO TO Q4
997 Don't know → GO TO Q4

Q3B In which Oregon counties (or nearest cities) did you, or someone in your household, participate in these motorized activities during the last three months?

*****USE COUNTY PRE-CODES FROM Q2B*****

Q4 Think about road or street activities, including running or walking for exercise, walking for pleasure, in-line skating, or skateboarding (**DO NOT READ: CYCLING / BICYCLING**). How many times did you, or someone in your household, participate in these road or street activities in Oregon during the past 12 months?

_____**RECORD # TIMES**
888 None → GO TO Q5
998 Refused → GO TO Q5
997 Don't know → GO TO Q5

Q4A Of those (INSERT NUMBER OF TIMES), how many took place in the last three months?

_____**RECORD # TIMES**
888 None → GO TO Q5
998 Refused → GO TO Q5
997 Don't know → GO TO Q5

Q4B In which Oregon counties (or nearest cities) did you, or someone in your household, participate in these road or street activities during the last three months?

*****USE COUNTY PRE-CODES FROM Q2B*****

- Q5 Think about snow related activities, like downhill skiing, snowboarding, or sledding. Remember, we already asked about cross country skiing and other snow activities like snowmobiling in a previous question. How many times did you, or someone in your household, participate in these snow activities in Oregon during the past 12 months?

_____**RECORD # TIMES**
888 None → GO TO Q6
998 Refused → GO TO Q6
997 Don't know → GO TO Q6

- Q5A Of those (INSERT NUMBER OF TIMES), how many took place in the last three months?

_____**RECORD # TIMES**
888 None → GO TO Q6
998 Refused → GO TO Q6
997 Don't know → GO TO Q6

- Q5B In which Oregon counties (or nearest cities) did you, or someone in your household, participate in these snow activities during the last three months?

*****USE COUNTY PRE-CODES FROM Q2B*****

- Q6 Think about fishing, crabbing, or clamming activities. How many times did you, or someone in your household, participate in these activities in Oregon during the past 12 months?

_____**RECORD # TIMES**
888 None → GO TO Q7
998 Refused → GO TO Q7
997 Don't know → GO TO Q7

- Q6A Of those (INSERT NUMBER OF TIMES), how many took place in the last three months?

_____**RECORD # TIMES**
888 None → GO TO Q7
998 Refused → GO TO Q7
997 Don't know → GO TO Q7

- Q6B In which Oregon counties (or nearest cities) did you, or someone in your household, go fishing, crabbing, or clamming during the last three months?

*****USE COUNTY PRE-CODES FROM Q2B*****

- Q7 Think about boating activities, including canoeing, kayaking, rafting, power boating, sailing, water skiing, windsurfing, or using a personal watercraft, such as a jet ski. How many times did you, or someone in your household, participate in these boating activities in Oregon during the past 12 months?

_____**RECORD # TIMES**
888 None → GO TO Q8
998 Refused → GO TO Q8
997 Don't know → GO TO Q8

- Q7A Of those (INSERT NUMBER OF TIMES), how many took place in the last three months?

_____**RECORD # TIMES**
888 None → GO TO Q8
998 Refused → GO TO Q8
997 Don't know → GO TO Q8

- Q7B In which Oregon counties (or nearest cities) did you, or someone in your household, participate in these boating activities during the last three months?

*****USE COUNTY PRE-CODES FROM Q2B*****

READ: We are half way through; we only have six more activity types to go!

- Q8 Think about swimming at a beach or outdoor pool, including snorkeling, SCUBA diving, surfing, or simply sitting on the beach. Remember, we already asked about hiking or walking on the beach in a previous question. How many times did you, or someone in your household, participate in these activities in Oregon during the past 12 months?

_____**RECORD # TIMES**
888 None → GO TO Q9
998 Refused → GO TO Q9
997 Don't know → GO TO Q9

- Q8A Of those (INSERT NUMBER OF TIMES), how many took place in the last three months?

_____**RECORD # TIMES**
888 None → GO TO Q9
998 Refused → GO TO Q9
997 Don't know → GO TO Q9

- Q8B In which Oregon counties (or nearest cities) did you, or someone in your household, participate in these swimming or beach activities during the last three months?

*****USE COUNTY PRE-CODES FROM Q2B*****

- Q9 Think about nature study activities, including bird watching, nature or wildlife observation, tracking animal signs, or outdoor photography. How many times did you, or someone in your household, participate in these nature study activities in Oregon during the past 12 months?

_____**RECORD # TIMES**
888 None → GO TO Q10
998 Refused → GO TO Q10
997 Don't know → GO TO Q10

- Q9A Of those (INSERT NUMBER OF TIMES), how many took place in the last three months?

_____**RECORD # TIMES**
888 None → GO TO Q10
998 Refused → GO TO Q10
997 Don't know → GO TO Q10

- Q9B In which Oregon counties (or nearest cities) did you, or someone in your household, participate in these nature study activities during the last three months?

*****USE COUNTY PRE-CODES FROM Q2B*****

- Q10 Think about hunting or shooting activities, including big and small game hunting, waterfowl hunting, upland bird hunting, animal trapping, target shooting, skeet or trap shooting, or archery. How many times did you, or someone in your household, participate in these hunting or shooting activities in Oregon during the past 12 months?

_____**RECORD # TIMES**
888 None → GO TO Q11
998 Refused → GO TO Q11
997 Don't know → GO TO Q11

- Q10A Of those (INSERT NUMBER OF TIMES), how many took place in the last three months?

_____**RECORD # TIMES**
888 None → GO TO Q11
998 Refused → GO TO Q11
997 Don't know → GO TO Q11

- Q10B In which Oregon counties (or nearest cities) did you, or someone in your household, participate in these hunting or shooting activities during the last three months?

*****USE COUNTY PRE-CODES FROM Q2B*****

Q11 Think about camping activities, including traveling to the site by vehicle, RV/trailer, ATV, horseback, boat, or bicycle. Remember, we already asked about backpacking in a previous question. How many times did you, or someone in your household, participate in these camping activities in Oregon during the past 12 months?

	<u>RECORD # TIMES</u>
888	None → GO TO Q12
998	Refused → GO TO Q12
997	Don't know → GO TO Q12

Q11A Of those (INSERT NUMBER OF TIMES), how many took place in the last three months?

	<u>RECORD # TIMES</u>
888	None → GO TO Q12
998	Refused → GO TO Q12
997	Don't know → GO TO Q12

Q11B In which Oregon counties (or nearest cities) did you, or someone in your household, participate in these camping activities during the last three months?

USE COUNTY PRE-CODES FROM Q2B

Q12 Think about picnicking and sightseeing activities, including driving for pleasure, train or bus touring, visiting cultural or historic sites, or going to museums. How many times did you, or someone in your household, participate in these activities in Oregon during the past 12 months?

	<u>RECORD # TIMES</u>
888	None → GO TO Q13
998	Refused → GO TO Q13
997	Don't know → GO TO Q13

Q12A Of those (INSERT NUMBER OF TIMES), how many took place in the last three months?

	<u>RECORD # TIMES</u>
888	None → GO TO Q13
998	Refused → GO TO Q13
997	Don't know → GO TO Q13

Q12B In which Oregon counties (or nearest cities) did you, or someone in your household, participate in these picnicking, sightseeing, or touring activities during the last three months?

USE COUNTY PRE-CODES FROM Q2B

Q13 Think about outdoor sports and game activities, such as golf, baseball, softball, football, rugby, tennis, soccer, volleyball, frisbee games, hang gliding, skydiving, rock climbing, or using children's playground equipment. How many times did you, or someone in your household, participate in outdoor sports and games in Oregon during the past 12 months?

 RECORD # TIMES
888 None → GO TO Q14
998 Refused → GO TO Q14
997 Don't know → GO TO Q14

Q13A Of those (INSERT NUMBER OF TIMES), how many took place in the last three months?

 RECORD # TIMES
888 None → GO TO Q14
998 Refused → GO TO Q14
997 Don't know → GO TO Q14

Q13B In which Oregon counties (or nearest cities) did you, or someone in your household, participate in outdoor sports and games during the last three months?

*****USE COUNTY PRE-CODES FROM Q2B*****

That is the end of my list of outdoor recreation activities. Now, I would like to ask you a few questions about your background for statistical purposes only. The information you provide will remain **STRICTLY CONFIDENTIAL**.

Q14 How many people are there that continually live at this address?

 RECORD # PEOPLE
98 Refused
97 Don't know

NQ15 Does anyone in your household have a disability? Note: A disability is a physical (hearing, sight, walking, etc.) or mental (learning, etc.) impairment that substantially limits their ability to care for themselves, learning, working, thinking or interacting with others, etc.). Non-English speaking is not a disability.

1 Yes
2 No → SKIP TO Q19
8 **(DO NOT READ)** Refuse or Don't Know → SKIP TO Q19

NQ16 What type of disability?

1 Physical
2 Mental
3 BOTH Mental and Physical
8 **(DO NOT READ)** Refuse or Don't Know

NQ17 Does the disability hamper the persons ability to recreate outdoors in Oregon?

- 1 Yes
- 2 No
- 8 **(DO NOT READ)** Refuse or Don't Know

NQ18 Please tell me any accommodation or assistance that could be offered that would be helpful to the disabled household members to improve their recreational experience? [CHECK ALL THAT APPLY]

- 11 Paved trails
- 12 Flatter or easier grades
- 13 Accessible campsites
- 14 Accessible restrooms
- 15 Accessible parking
- 16 More accessible activities within the campground
- 17 Easier access to water (access route down to the water's edge)
- 18 Fishing platforms
- 19 More designated hunting areas
- 20 Access behind closed areas (roads)
- 21 Better ways to communicate (visually or hearing impaired)
- 22 Provide rental equipment and instruction
- 23 Proper accessibility to playgrounds; variety of accessible equipment
- 99 Other (SPECIFY) _____
- 88 None

Q19 What is the race or national origin of the head-of-household?

- 11 African American
- 12 American Indian
- 13 Hispanic
- 14 White/European
- 99 Other _____
- 88 Refused
- 97 Don't know

Q20 What is the age of the head-of-household?

- _____ **RECORD AGE**
- 98 Refused
 - 97 Don't know

Q21 What was the highest grade or year of school completed by the head-of-household?

- 11 1st – 4th grade
- 12 5th – 6th grade
- 13 7th – 8th grade
- 14 9th grade
- 15 10th grade
- 16 11th grade
- 17 High school graduate
- 18 Some college, no degree
- 19 Associate degree, occupational
- 20 Associate degree, academic
- 21 Bachelor's degree
- 22 Master's degree
- 23 Professional degree
- 24 Doctorate degree
- 88 None
- 98 Refused
- 97 Don't know

Q22 You have completed the telephone interview. We would also like to send you a more detailed written questionnaire about the outdoor recreation activities you have mentioned. By completing the written questionnaire, we will enter your name into a drawing. The prizes are free annual passes into any State park and coupons for seven free nights stay. May I please have your name, address and email (required) so we can send you the questionnaire and notify you if you win the contest?

Name _____

Street Address _____

City, State, Zip code _____

Email _____

- 8 Refused → READ TERMINATE DIALOG, NOTE RESULTS
- 7 Don't know → READ TERMINATE DIALOG, NOTE RESULTS

If you would prefer to fill-out the written questionnaire on the Internet, I can give you the web address.

- 1 Prefer Mail → READ TERMINATE DIALOG, NOTE RESULTS
- 2 Prefer Internet. The following is the address: [http://_____outdoors.orst.edu](http://outdoors.orst.edu)
→ READ TERMINATE DIALOG, NOTE RESULTS



Oregon Statewide Comprehensive Outdoor Recreation Planning Newsletter

March 1, 2002

SCORP Planning and the LWCF

As you know, the Oregon Parks and Recreation Department (OPRD) Policy and Planning Section is well along the way towards completion of the Statewide Comprehensive Outdoor Recreation Plan (SCORP) for the State of Oregon. Successful completion of the plan (by December 31, 2002), will allow Oregon to remain qualified for the federal Land and Water Conservation Fund (LWCF) program through the end of 2007. This is of increasing importance as the LWCF program continues to grow. After a 4-year funding drought (1996 - 1999), Oregon stateside LWCF funding has risen from \$.5 million in Federal Fiscal Year (FY) 2000, to \$2.1 million in FY 2002. These grant dollars are available to eligible state agencies, cities, counties, Park & Recreation Districts, Port Districts and Native American Tribes (60% of the fund to local government agencies and 40% to eligible state agencies) for land acquisition, facility development and major rehabilitation of existing outdoor recreation facilities. A major objective of the SCORP plan is to provide direction for the allocation of limited LWCF funds and other OPRD administered grant programs such as the Local Government and Recreation Trails Grant Programs.

SCORP Progress Report

There is considerable progress to report since our last newsletter. Major planning accomplishments include:

- the statewide outdoor recreational resource/facility inventory,
- data collection associated with the Oregon Outdoor Recreation Survey,
- a series of regional recreational issues workshops, and
- a method for measuring the need for major rehabilitation of existing outdoor recreation facilities across the state.

The Statewide Outdoor Recreational Resource/Facility Inventory

The accuracy of the statewide inventory is essential to the 2003-2007 SCORP needs assessment process. As a result, considerable time and expense was allocated towards maximizing the inventory response for recreation providers across the state. We are pleased to report that approximately 90% of all public-sector recreation providers and independent school districts in the state of Oregon completed and returned an inventory questionnaire. The publication entitled, "*The 2001 Oregon Statewide Outdoor Recreational Resource/Facilities Inventory Bulletin*" was completed and sent out to all recreation providers across the state in October 2001. Additional copies of the bulletin are also available from OPRD. Special queries of the inventory database are also available upon request.

Important Note: Since completion of the Inventory Bulletin, some data corrections and additions have been made to the inventory database. A revised version of the the Inventory Bulletin will be available on the SCORP Planning Website at http://www.prd.state.or/scorp_inventory.php in June 2002. Please reference this revised version after it becomes available.

The Oregon Outdoor Recreation Survey

Oregon State University (OSU) has successfully completed a year-long survey designed to identify outdoor recreation participation in the state of Oregon. A random-digit dialing process was used to identify a sample of approximately 4,400 Oregonians and 800 tourists (from Washington, Idaho, and California) who participated in outdoor recreation activities in the state of Oregon. A follow-up mailback survey was sent to each person agreeing to participate in the survey. According to Principal Investigator Dr. Rebecca Johnson, "the survey will provide statistically reliable information on recreational participation for each of the eleven SCORP planning regions and statewide. The next steps involve data analysis and completion of the final report." Look for preliminary results from the Oregon Outdoor Recreation Survey on the SCORP Planning Website in June of 2002.

Regional and Statewide Needs Assessment

Using a methodology developed for the 1994 Florida SCORP plan and data from the Oregon recreational inventory and survey, OSU will conduct a recreational needs assessment to identify the relative need for

Continued ...

additional recreational facilities across the state. The following table illustrates how the results will be presented in the final SCORP document.

Sample Statewide Needs Assessment Table

Rank	Activity	Region	Relative Need
1	Bicycle Riding	2	759.9
2	Hiking	6	678.2
3	Tent Camping	1	672.5
4	Bicycle Riding	10	568.1
5	Tent Camping	2	554.4
6	Hiking	5	437.7

The methodology is designed to calculate a *relative need index score* for an established list of recreational activities. The hypothetical sample table shows the need for additional bicycle riding facilities in SCORP Planning Region 2 has been identified as the top statewide facility need. Similar tables will be generated for each of the 11 SCORP Planning Regions. In addition, census data will be used to create similar set of 5-year projection tables to estimate facility needs based on estimated population growth.

Regional Recreation Issues Workshops

During the months of October thru December of 2001, OPRD staff conducted a series of regional recreation issues workshops across the state. Each workshop included an afternoon session open to all public recreation providers and an evening session open to the general public. Approximately 130 people attended a workshop, including representatives from 70 public-sector recreation provider organizations. During the afternoon sessions, a voting process was used to identify the top 3 LWCF issues (related to land acquisition, facility development and major rehabilitation) in each of the 11 planning regions. Top statewide LWCF issues include:

- the need for major rehabilitation of existing recreation facilities (top issue in 9 regions),
- the need for additional multi-use recreation trails and trail connectivity (top issue in 8 regions), and
- the need for land acquisition to keep pace with population growth and maintain access to public lands (top issue in 5 regions).

A complete listing of issues can be found on the SCORP Planning Website at http://www.prd.state.or/scorp_issues.php.

Measuring the Need for Major Rehabilitation

Now that the need for major rehabilitation has been identified as a key statewide issue, our challenge is to properly address the issue in the 2003-2007 SCORP plan. Towards this end, OPRD and the Oregon Recreation and Parks Association (ORPA) have developed a method for collecting major rehabilitation data from non-Federal public-sector recreation providers across the state of Oregon. This data collection process is designed to:

- develop a basic understanding of the relative health of the recreational infrastructure in the state,
- identify the specific types of facilities in need of major rehabilitation, and
- identify the specific reasons why the facilities are in need of major rehabilitation.

To GTAC members:

If you know of regionally important wildlife habitats (especially uplands) that were not picked up by Metro's Goal 5 model, or that seem to have scored low relative to their habitat values, please submit this information with a map and justification explaining why you believe the sites are important to Lori Hennings. She can be reached at (503) 797-1940, by e-mail: hennings@metro.dst.or.us, or by visiting her at Metro on the 3rd floor in the Growth Management Department. Any information she receives by March 15th will be shared with the Goal 5 TAC and MTAC the following week. You can also submit information directly to the committees or provide it at public hearings (the sooner the better). See Metro's ftp site below for current maps and information.

Jennifer Thompson

Paulette Copperstone - FTP site

Page 1

From: Mark Turpel
To: Paulette Copperstone
Date: 3/7/02 4:01PM
Subject: FTP site

02-3843

Oregon Fish & Wildlife Office

MAR 11 2002

To: MTAC, G5TAC and WRPAC members and alternates and interested parties:

We have been talking with you about the Wildlife Habitat portion of our fish and wildlife habitat protection plan and have shown large scale region-wide maps of this draft inventory.

We now have this information available on our FTP site. By using your computer, web browser and internet connection, you can view these maps and explanatory materials. The site address is:

<ftp://ftp.metro-region.org/dist/gm/goal5/>

When you go to this site it should say:

Welcome to Metro's FTP server.

The local time is

Metro is the regional government for the 3 counties and 24 cities of Metropolitan Portland Oregon.

Information about your login and any transfers are logged by this server.
If this bothers you, please disconnect now.

By using this server, you agree to the terms and conditions of use outlined in the policy.txt document at the root level of the ftp directory.

Please contact ftp-admin@metro-region.org with any technical problems accessing this server.

Up to higher level directory

data/
documents/
maps/

Thu Feb 28 16:10:00 2002 Directory
Thu Feb 28 16:10:00 2002 Directory
Mon Mar 04 15:45:00 2002 Directory

(over)

Maps

If you click on the maps link a page will come up that has a whole set of files on it. These are maps of the region-wide layers and the quad maps as follows:

Region-wide maps

4434con022802.pdf	(this is the region-wide Connectivity to Other Patches layer)
4434fin022802.pdf	(this is the region-wide Final Patch Score layer)
4434int022802.pdf	(this is the region-wide Interior Score layer)
4434siz022802.pdf	(this is the region-wide Size Score layer)
4434wat022802.pdf	(this is the region-wide Connectivity to Water layer)

Quad maps

These maps show detailed areas of the draft wildlife habitat inventory including consideration of all of the above data layers.

camawashhab022802.pdf	(quad map of Camas/Washougal area which includes parts of Troutdale, Wood Village, etc.)
canboreghab022802.pdf	(quad map of the Canby/Oregon area which includes parts of Oregon City, Clackamas County)
damasandhab022802.pdf	(quad of Damascus/Sandy area)
foregalehab022802.pdf	(quad of the Forest Grove/Gales Creek area)
hilllinhab022802.pdf	(quad of the Hillsboro/Linnton area)
lakegladhab022802.pdf	(quad of the Lake Oswego/Gladstone area)
portmtabhab022802.pdf	(quad of the Portland/Mr. Tabor area)
sauvvanhab022802.pdf	(quad of the Sauvie Island/Vancouver area)
schobeavhab022802.pdf	(quad of the Scholls/Beaverton area)
shercanbhab022802.pdf	(quad of the Sherwood/Canby area)

Documents

If you click on the documents link, you will get text documents as follows:

flooddeveloped.doc	43 Kb	(word document of the developed floodplain approach)
wildlifemodel.doc	1450 Kb	(word document explaining the wildlife habitat model)

Data

If you click on the data link and have GIS capabilities, you can use the following data:

devfld022602.zip	(region-wide developed floodplain layer)
patchmod022602.zip	(region-wide patch model layer)

Should you have questions about these materials, you may contact Justin Houk at: houlj@metro.dst.or.us

Thanks!!

March 13, 2002

GREENSPACES TECHNICAL ADVISORY COMMITTEE

please sign in...

name	organization
Jane Hart	
Terry Bergeson	
Don Baack	
Gregg Furthart	
Mary Cook Swanson	
Burkard Fryer	
Chris Mayland	

March 13, 2002

GREENSPACES TECHNICAL ADVISORY COMMITTEE

please sign in...

name	organization
RIC CATRON Jennifer Thompson	CITY of GRESHAM U.S. FWS
Dan Kent Michelle Healy	Salmon Safe NCPRD
Mel Huie	Metro
SEAN LOUGHRAN	
Barbara Walker	
Jayne Combs	TRLCC
Deborah Lev	Portland
Jim Sjulin	"
KIM GILMER	CITY OF LAKE OSWEGO

BOSAK

YTHPRD

Chris Neamtz Wilsonville