

# Greenspaces Technical Advisory Committee

---

Meeting Notice and Agenda  
September 12, 2001  
1 to 3 p.m.  
Metro Regional Center, rm. 501

---

## AGENDA

1:00 - 1:10 pm (10 min.)

Introductions and announcements

1:10 - 1:25 pm (15 min.)

Update on Green Ribbon Committee

Presiding Officer David Bragdon

1:25 - 1:40 pm (15 min.)

MTIP Trails Funding Update

Mel Huie

1:40 - 2:40 pm (60 min.)

Draft Regional Greenspaces System

"What does it mean to be included in the 'regional system'?"

Heather Nelson Kent, Jennifer Budhabhatti

---

Next GTAC meeting: Wednesday, October 10, 2001, 1 to 3 p.m. at Metro

# METRO REGIONAL PARKS AND GREENSPACES

## **Greenspaces Technical Advisory Committee**

---

### **Meeting Notes:**

Special Trails Meeting  
Sept. 12, 2001  
11 a.m. to 1 p.m.  
Metro Regional Center, rm. 501

---

### **Discussion of nominated trails**

The group continued the discussion of the trails that have been nominated for addition to the Regional Trails Map. They were also reminded that letters of support from affected local jurisdictions are required for all nominations and request for changes in designation from greenway to land based trail.

#### **#5 Scouter Mountain Trail Extension**

(adjacent to Happy Valley, south of Springwater Corridor)

Proposal: Connect Scouter Mountain Trail (currently on master plan) to proposed East Buttes Loop Trail

Discussion: The group agreed to recommended this trail "conceptually" but to remain flexible about the alignment until more is known about the other potential trail projects in the area (in particular, the nearby Powerline Trail). For the purposes of the map, it will show the longer Powerline Trail but indicate in the description potential variations within that proposed corridor.

#### **#7 & #19 Surf to Turf Trail: Rail with Trail**

Proposal: Add a new trail adjacent to the existing Portland and Western short-line railroad tracks (trains are active in this corridor) from downtown Lake Oswego west to the Metro boundary (near Forest Grove) and ultimately to the Pacific Ocean (following the Tillamook RR Branch). This would be a regional trail and also an Inter-Regional Trail.

Note: Metro Parks and Greenspaces staff determined that this corridor is the northern route (#19) and not the southern route previously mapped (#7).

Discussion: Implementation would likely involve some acquisition. Probably not compatible for dual use (i.e. rail with trail). The group agreed that it would be good to have the concept in place on the Regional Trails Map in the event of the abandonment of the rail line.

### **#17 Council Creek Trail: Westside MAX to Banks**

(end of MAX line in Hillsboro west to Banks via Cornelius, Forest Grove and unincorporated Washington County, with an additional short trail extension south to the Tualatin River)

Proposal: Add new trail to Regional Greenspaces Trails and Greenways Map

Discussion: Need to coordinate with other local jurisdictions. Metro has done some acquisition along Council Creek. Scott Talbot from City of Hillsboro added that although it will be very difficult to get from the end of the MAX line in Hillsboro to Cornelius, it is also a very worthwhile project. It was suggested that the Banks-Vernonia trail should be shown on the map to highlight that connection. The group felt that although the trail may be difficult to implement, it was worth including on the map.

### **#10 Phillips Creek Greenway**

(trail loop around Clackamas Town Center connecting to I-205 Bike/Pedestrian Trail and North Clackamas Greenway, following Phillips Creek)

Proposal: Add new trail to the Greenspaces Trails and Greenways Map.

Discussion: The group discussed whether or not the trail is of regional significance. Eventually decided that it's ability to connect a regional center to the regional trail system made it a valuable addition to the map.

### **New item: Lewis & Clark Discovery Greenway**

Kelly Puntene from City of Vancouver proposed that the portion of the 40 Mile Loop along Marine Drive between the Sandy River and Kelley Point Park be named the Lewis & Clark Discovery Greenway. The group agreed. In addition, he described the proposed trail on the north side of the Colombia as a priority for Vancouver/Clark County Parks. It is also being called the Lewis and Clark Discovery Greenway.

### **#13 Hillsdale to Lake Oswego Trail**

(Hillsdale Town Center in southwest Portland south to downtown Lake Oswego with a connection to the Willamette River Greenway Trail)

Proposal: Add a new trail to the Regional Trails and Greenways Map. The trail would be a soft surface trail as it traverses natural areas and Tryon Creek State Park. Street connections could be hard surface (e.g. wide sidewalks, asphalt path).

Discussion: The group discussed whether the trail is too similar to the adjacent Terwilliger Blvd. Trail and whether it is really of regional significance. Because a number of people were hesitant to add the trail to the map and we were running out of time for further discussion, Charlie proposed postponing a decision until the next meeting.



# CITY OF CORNELIUS

September 11, 2001

Dear Jon Holan:

This letter is intended to provide you with information and solicit your comments on a proposal we have made to Metro for the development of a new required trail. This pedestrian and bicycle trail would connect the west end of the MAX Light Rail Train in Hillsboro with the Banks-Vernonia Linear Trail, primarily along Council Creek. This Council Creek greenspace and trail is intended to relate to the natural resource, parks and trail plans of the City of Cornelius, neighboring jurisdictions and the surrounding area.

Council Creek drainage flows from its source northwest of Forest Grove to its confluence with Dairy Creek, just west of Hillsboro. This natural corridor provides the opportunity for a connection of our four communities through a greenway trail. Council Creek and associated riparian areas are a significant natural resource for the City of Cornelius along a majority of its northern boundary, abutting mostly residential development. The City staff and members of the City Parks Commission believe the City has the opportunity to make this resource a connected greenway and trail system utilizing the adjacent riparian and floodplain areas of Council Creek. This greenway trail has the potential to serve both the citizens of Cornelius and the region.

The City of Cornelius has proposed a conceptual greenway trail plan (see attached) to Metro's Parks & Greenspaces Technical Advisory Committee (GTAC) that would provide connection from the Hillsboro Max Station line to Cornelius and Forest Grove via the Council Creek and Dairy Creek drainage corridors. The proposed trail would also provide connection from Forest Grove to Banks and to the Banks-Vernonia Linear Trail. When this conceptual trail was proposed to GTAC, it was met with a positive response. The Cornelius Community Development Department is now in the process of soliciting comments from our neighboring communities and partners to determine the potential of this conceptual plan.

Metro Parks & Greenspaces Program has purchased some property along the Council Creek drainage near NW Hobbs Road in Cornelius. The City of Cornelius does not at this time have the financial resources to acquire land or develop facilities for such a plan. However, the City has successfully been encouraging residential developers who have proposed development along Council Creek to include public access, enhancement and even restoration of this riparian corridor. The City has also conditioned development approvals to provide for pedestrian connections to the Council Creek area.

The City would greatly appreciate the opportunity to partner with Metro, other agencies and your community to provide a greenway system along Council Creek with multiple benefits. Some of these benefits would include:

1. A connected pedestrian trail along the Council Creek corridor that would link the communities of Cornelius, Forest Grove and Hillsboro and connect the required McKay Creek Trail to the Banks to Vernonia Linear Trail.
2. Protection of wildlife habitat along Council Creek.

3. Protection and enhancement of the water quality of Council Creek and Diary Creek.
4. Recreational opportunities for hiking, biking, nature observation and similar uses.

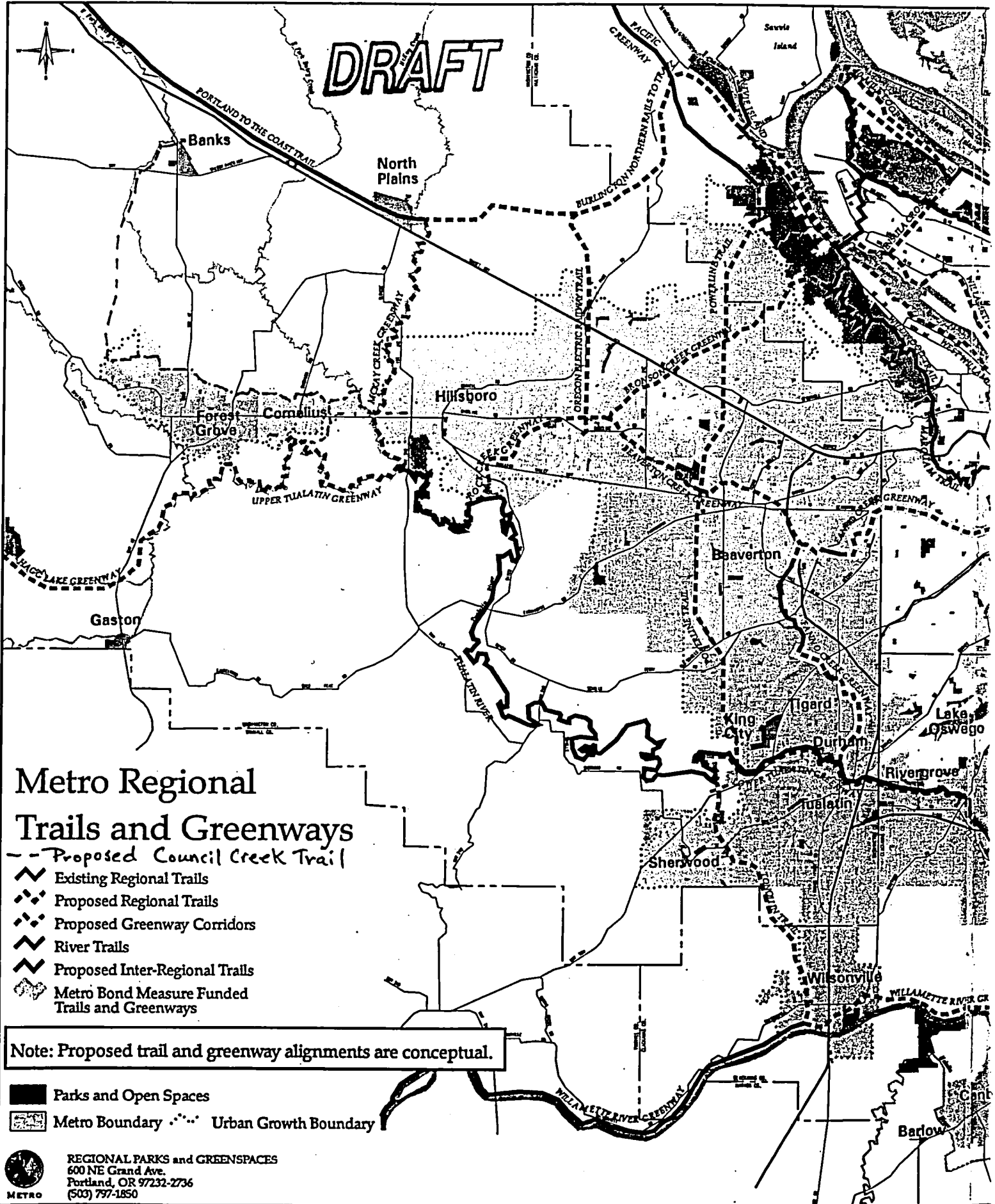
We would appreciate your comments on this conceptual trail plan to assist us in our efforts to proceed with this plan. If you have question please feel free to contact myself or Dick Reynolds, Associate Planner. Thank you very much for your time and assistance in reviewing this concept.

Your partner in community service,

Richard Meyer  
Community Development Director

Cc: Brent Curtis, Washington County  
Wink Brooks, City of Hillsboro  
Mayor Robert Orlowski, City of Banks

**DRAFT**



**Aileen Halverson sits on the porch of the Green Gables home built by her father. The home, built in 1905, sits across from Central School.**

courtesy photos

building now serves as ryes Action Athletics.

Aileen Halverson attended school in Forest Grove. She attended Pacific University where

daughter and Stan Gir children and grandchildren

# Council Creek land may become greenspace area

BY ALANDRA HUTCHINS

OF THE NEWS-TIMES

A creek instead of a road; a pond instead of sidewalks; and tall old trees instead of large new houses. Approximately 10 acres of land along Council Creek north of Cornelius that was slated to become part of housing developments could instead remain as a natural area.

Sales are still pending between the landowners and Metro through the agency's Greenspaces program.

Verner Clapp signed a sales agreement with Metro to sell approximately five acres of his land which lies north of the Cornelius urban growth boundary to the west of Hobbs Road. Clapp's property contains a pond and a substantial amount of large timber, as well as Council Creek.

"I think it will make a wonderful park area," said Clapp. "It will be a very sensible addition to the Metro park lands program. The alternative would be to log it. I'm glad I'm not going to do that."

Across Hobbs Road from Clapp's property sits a five-acre parcel of land which also has a sale pending to Metro.

According to Nancy Chase of the Greenspaces program, Metro wants to try to purchase as much property as they can around the creek. The body is also purchasing land throughout the region in an attempt to preserve greenspaces from development. Some of the target areas include around Jackson Bottom Wetlands, Dairy Creek, McKay Creek, and the Fernhill Wetlands area.

They received money for the land purchases through a bond measure approved by voters in 1995.

Right now, funds just pay for the land acquisition, but in the future, Chase says that she hopes to see funds available to purchase trails, picnic tables and bird viewing areas.

"The acquisition is real exciting to me," said Chase. "Given the growth, (greenspaces) are really needed in the area."

Cornelius Community Development Director Richard Meyer and his staff support Metro's purchases and hope to see further park and greenspace development through the Council Creek corridor.

According to Associate Planner Richard Reynolds, he and Meyer brainstormed a "real conceptual" idea of working to create a trail from one end of the creek to the other, tying one end to the MAX station and the other to the Banks-Vernonia Linear Trail.

Meyer pitched the idea to Metro during a meeting and he received a favorable response. Meyer or Reynolds will attend a second meeting Sept. 12 to further outline the idea. Metro will decide if they want to include the potential trail on a list of possible projects for the future.

"It would give us some priority to have land purchases or provide us assistance in purchasing land," said Reynolds.

Reynolds says that the area along Council Creek is especially appealing because portions of the creek still contain a "natural character." He says that keeping the greenspaces would enhance water quality and provide benefits for wildlife as well as offering a recreational area for residents.

## BRIEFS

### Square dance lessons begin

The 4-N-8ers Square Dance Club, which began in Forest Grove and recently celebrated its 50th anniversary, will sponsor square dance lessons beginning Sept. 9, 3 p.m.-5 p.m., in the Hillsboro Oddfellows Hall, on Third Avenue and Main Street above LaHale's Men's Shop, 267 E. Main.

The first lesson will be free and subsequent lessons will cost \$3.50 per person.

To sign-up, call (503) 357-5580 or (503) 642-2341.

### Scholarship benefit set

Pacific University's College of Optometry and the Forest Grove Lions Club have joined to sponsor a benefit for scholarships and new clinic instruments.

The 2001 Lions Walk & Run for Sight, set for Sept. 15, includes a 5k run, which starts at 9 a.m., and a 2.5k and a 5k walk, which start

at 9 a.m. The event will begin and end in the parking lot in front of the College of Optometry on the corner of Pacific Avenue and Birch Street in Forest Grove.

Entry fee is \$5 and participants will receive certificates for free vision screenings, a 25 percent discount on glasses in Pacific's Forest Grove and Portland Vision Centers, plus a discount for the Founders' Day and Corn Roast, set for the Pacific University campus on Sept. 16.



**Tired of house cleaning?**

Healthy Trails, Healthy People... Discover the Economic, Social, and Health Benefits

Kelly Punteney  
Urban Trails/Greenway Pl  
Clark County Parks Dept  
PO Box 1995  
Vancouver WA 98668

Washington State Trails Coalition  
PO Box 2397  
Vancouver, WA 98668-2397



# Healthy Trails, Healthy People...

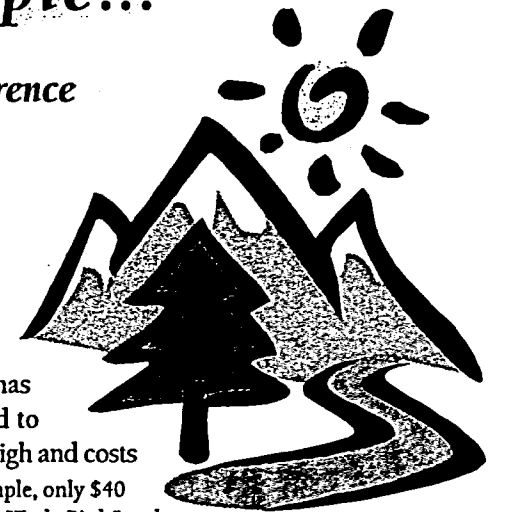
An Interactive, Diverse, and Thought-Provoking Conference  
For People Who Care About Trails

October 4, 5, 6, 2001  
Red Lion Hotel at the Quay • Vancouver, Washington

The Healthy Trails, Healthy People Conference is open to everyone with a zeal for trails and the opportunities they afford. This year the conference is structured around three tracks: economic, health, and social issues. Participants may attend all sessions in one track, or mix and match. Each will inform trail users, elected officials, board members, and professionals about today's vital trail issues.

The conference is hosted by the Washington State Trails Coalition. The planning committee is comprised of members from: Backcountry Horsemen, Discovery Walks, Interagency Committee for Outdoor Recreation, Jones Creek Trail Riders Assn., Mountaineers, National Park Service, Vancouver-Clark Parks and Recreation Advisory Commission, Pacific Northwest Trail Association, State Dept. of Transportation, and the Washington State Orienteering Association.

The conference committee has worked hard to keep value high and costs low (for example, only \$40 registration for "Early Birds" and \$35 for five meals). As you read through this brochure, we hope you will agree. We encourage all attendees to stay at the Hotel at the Quay in Vancouver where rooms have been reserved at a special conference rate. Please pre-register! This will be an immense help to the committee in planning conference accommodations.



## VANCOUVER AREA HISTORIC AND SCENIC ATTRACTIONS



As Washington's fourth largest city, Vancouver, the hub for Clark County, was noted by Lewis and Clark as a most favorite site on the Columbia River. Nestled between the Pacific Coast and the Cascade Mountains, one can find the perfect blending of a historically rich heritage and modern growth.

Fall in the Vancouver area brings exciting events, attractions and recreational opportunities to delight everyone. Come, experience all that Southwest Washington has to offer, from the richness of Vancouver's National Historic Reserve to the spectacular scenery and numerous river activities that thrive along the majestic Columbia River Gorge National Scenic Area.

From hiking and biking to windsurfing, camping and bird watching, this area offers recreation at its best.

## ROOM RESERVATIONS

The Red Lion Hotel at The Quay has agreed to provide trail conference attendees a reduced room rate of \$75/night + tax. For this special rate, tell the reservations operator you are with the "TRAIL CONFERENCE" and reserve by September 12, 2001. After this date space and rates are not guaranteed.

The hotel is located in Vancouver Washington at the City Center exit off Interstate 5. Make your room reservations with Red Lion directly.

Dial 1-800/Red Lion (800/ 733-5466)  
Fax 360/ 694-2023  
[www.redlion.com/properties/vancouver.html](http://www.redlion.com/properties/vancouver.html)

## MEALS

Conference meals are an excellent place to network, meet informally and exchange information and ideas.

We offer two choices:

1. Complete five-meal package @ \$35 (save \$15)
2. Individual meals  
10/4 Quay luncheon @ \$10  
10/4 Dutch oven dinner at the General O.O. Howard House @ \$13  
10/5 box lunch @ \$8  
10/5 Quay dinner @ \$13  
10/6 box lunch @ \$6

There are no refunds on meals, but you may sell or gift your ticket.

## QUESTIONS?

Direct all registration inquiries to:

360/ 696-8171 or  
360/ 694-2364

For other inquiries, call or email

Jeri Krampetz at:  
877/ 854-9415 (toll free)  
[jerikramp@aol.com](mailto:jerikramp@aol.com)





# October 4, 5, 6, 2001 Conference Schedule

## THURSDAY, OCTOBER 4

11 am – Noon: Registration

Noon – 1:30 pm: Keynote lunch address:  
"People Who Build and Maintain Trails:  
Are They Public Health Practitioners?"  
Dr. David Buchner (Chief, Physical  
Activity and Health Branch, National  
Center for Disease Control).

1:30 – 2 pm: Break

2 – 2:45 pm: "Overview:  
The Economic Benefits of Trails."  
George Sharp (State Office of Trade  
& Economic Development –  
Tourism Division).

2:45 – 3:30 pm: "Overview:  
Linking Neighbors With Trails."  
Bob Vaux (Skagit County Physical  
Activity Coalition).

3:30 – 4 pm: Break

4 – 4:45 pm: "Overview:  
"Trails and Health: What's the  
Connection?"  
Charlotte Claybrooke (Community  
Wellness and Prevention, State Dept.  
of Health).

5:30 – 6 pm: Walk to O.O. Howard House  
for Western Cookout. 1.7 miles along the  
Columbia River trail from the hotel.

6 pm: Dinner – Western Cookout  
A Real Wild Western Dutch Oven Cook Out  
hosted by the Backcountry Horsemen at the  
General O.O. Howard House. Serving as a  
visitor center for the 366-acre Vancouver  
National Historic Reserve, the house is  
staffed by National Park Service personnel.

## KEYNOTE SPEAKERS

### Christopher N. Brown

Christopher N. Brown is the National Park  
Service's Chief of National Designations in  
the Center for Recreation and Conservation.  
He is responsible for Long Distance Trails,  
Heritage Areas, Wild and Scenic Rivers, and  
Hydropower Relicensing Assistance. He  
also continues a close association with the  
Rivers, Trails, and Conservation Assistance  
program. Mr. Brown has spent 20 years in  
the conservation field, holding positions in  
the public and non-profit sectors as well as  
actively volunteering his time.

### David Buchner, M.D., M.P.H.

Dr. Buchner joined the University of  
Washington faculty in 1982, and rose to the  
rank of Professor of Health Services in the  
School of Public Health and Community  
Medicine, and the rank of Adjunct Professor  
in the School of Medicine. In 1999, Dr.  
Buchner joined the Centers for Disease  
Control as Chief of the Physical Activity  
and Health Branch in the National Center  
for Chronic Disease Prevention and Health  
Promotion.

## SATURDAY, OCTOBER 6

Breakfast – on your own

8:30 – 11:30 am: "Getting There."  
An interactive session facilitated by the  
dynamic John Garofalo (John Garofalo  
Consulting) to energize and focus you on  
the next steps needed for the work that  
lies ahead in creating healthy trails and  
healthy people!

11:30 am – through afternoon: Box lunch  
and educational field trips.

## FRIDAY, OCTOBER 5 – CONCURRENT SESSIONS: Choose one session in each time period.

### TRACK 1: ECONOMIC BENEFITS OF TRAILS

Breakfast – on your own

8:30 – 9:45 am: "Funding Your Trail ~ Mining  
For Dollars In The Public Sector."  
Panelists Greg Lovelady (Interagency Committee for  
Outdoor Recreation) and Julie Mercer Matlick (State  
Dept. of Transportation) provide the latest on trail dollars  
available from state and federal sources. Also learn  
valuable tips on securing grants.

9:45 – 10:15 am: Break

10:15 – 11:30 am: "Private Funding Sources."  
Sheridan Hopper Botts (Contracts Manager, School of  
Science & Engineering, Seattle University).

11:30 am – 1:45 pm: Box Lunch

1:45 – 3:00 pm: "The Economic Value / Benefits  
of Trails." Steve Bowes (National Park Service).

3:00 – 3:30 pm: Break

3:30 – 4:45 pm: "A Guide to the Impacts of Non-  
motorized Trail Use." Donald V. Weir (Donald V. Weir  
& Associates) an Engineering Environmental and  
Groundwater Specialist.

6:00: Keynote dinner address at the Quay:  
"Trails and Tales." Chris Brown, NPS.

### TRACK 2: SOCIAL BENEFITS OF TRAILS

Breakfast – on your own

8:30 – 9:45 am: "Volunteer Development &  
Recruitment." Fran Troje (The Mountaineers).

9:45 – 10:15 am: Break

10:15 – 11:30 am: "ADA, Access, and Trails."  
Come and learn the latest on the recently proposed  
guidelines for trail accessibility under the ADA – the  
Americans with Disabilities Act. Presented by Rory  
Calhoun, Accessibility Specialist (Interagency  
Committee for Outdoor Recreation).

11:30 am – 1:45 pm: Box Lunch

1:45 – 3:00 pm: "The Future of ORV Recreation  
in Washington ~ A Realistic Appraisal."  
Panelists include John Keates (Director, Enumclaw  
Parks Dept.), Randy McLandress (Wenatchee  
National Forest), and representatives from the  
off-road vehicle and hiking communities.

3:00 – 3:30 pm: Break

3:30 – 4:45 pm: "Shared Use: Replacing  
Conflict with Collaboration." Loren McGovern  
(Backcountry Horsemen).

6:00: Keynote dinner address see TRACK 1

### TRACK 3: HEALTH BENEFITS OF TRAILS

Breakfast – on your own

8:30 – 9:45 am: "Making Connections."  
Tom Eksten (King County Parks & Recreation Dept.),  
Mia Burk (Principal, Alta Transportation Consulting),  
and Tim Myers (Director, Whitman County Parks &  
Recreation Dept.).

9:45 – 10:15 am: Break

10:15 – 11:30 am: "Wildlife, Trails, and Balance."  
Panelists include Chuck Gibilisco (Dept. of Fish &  
Wildlife), Vladimir Steblina (Wenatchee National  
Forest), Jeff Uebel (Forest Service), and Don Gray  
(Mt. Baker-Snoqualmie National Forest). Trail planners  
are challenged by unintended impacts on wildlife.  
Come learn more about these impacts and what  
you can do to preserve environmental values and  
quality recreation.

11:30 am – 1:45 pm: Box Lunch

1:45 – 3:00 pm: "Trail and Wildlife Interactions:  
Current Knowledge and Future Directions."  
Panelists include Bill Gains (Ecologist, Okanogan  
Wenatchee NF) and John Lehmkuhl (Research  
Wildlife Biologist, Okanogan-Wenatchee NF).

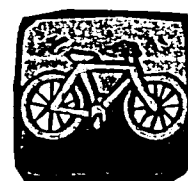
3:00 – 3:30 pm: Break

3:30 – 4:45 pm: "A Trail's Tool Kit for Mind  
and Body." Panelists include Patty McLeod (US  
Forest Service) and Dr. David Buchner  
(US Centers for Disease Control).

6:00: Keynote dinner address see TRACK 1

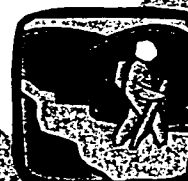
## SATURDAY EDUCATIONAL FIELD TRIPS – YOUR CHOICE OF...

### TOUR #1 BY BICYCLE:



Discovery Trail on Burnt Bridge  
Creek Greenway, 12:15 – 2:15 p.m.  
Take a ride with Vancouver's Mayor  
along the City's Discovery Trail on  
Burnt Bridge Creek Greenway.  
Sponsored by the Vancouver Bicycle  
Club, both hardcore and casual riders will  
enjoy this meander through hills, thick forest  
shade, and grassy bottom lands. Bring your  
own bike or let us know if you would like to  
rent a 2-wheeler.

### TOUR #2 ON FOOT:



Frenchman's Bar to Vancouver Lake,  
12:15 – 2:15 p.m.  
Round-trip transportation will be  
provided for this 2.6-mile guided  
interpretive walk along the "so new,  
it's unnamed" trail. Sponsored by  
Discovery Walks, the easy trail features  
great views of the Columbia River,  
Vancouver Lake, and the wildlife-rich  
Vancouver lowlands. As an option, you can  
choose to walk with local Volkssporters!

### TOUR #3 ON FOOT:



Chinook Trail,  
12:15 – 4:00 p.m.  
Round-trip transportation will be  
provided for this 1.5-hour walk  
along the East Fork of the Lewis  
River through the high country of  
rural Clark County. Sponsored  
by the Chinook Trail Association,  
this easy trail passes through both  
old and second growth backcountry  
trails to the beautiful Moulten Falls.

For all field trips, meet at Washington's oldest apple tree, 100 yards east of the Quay, at the Old Apple Tree Festival.

# Healthy Trails, Healthy People...

October 4, 5, 6, 2001

Red Lion Hotel at the Quay • Vancouver, Washington

## REGISTRATION FORM



Please Print

Name \_\_\_\_\_  
(to appear on name tag)  
Organization \_\_\_\_\_  
Address \_\_\_\_\_  
City \_\_\_\_\_ State \_\_\_\_\_ Zip \_\_\_\_\_  
Phone # \_\_\_\_\_ Fax # \_\_\_\_\_  
Email \_\_\_\_\_

**Registration** Includes conference materials, admission to all sessions,  
and Saturday field trips.

"Early Bird" Registration.....\$40 \_\_\_\_\_

Form with payment postmarked by September 12, 2001.

"Standard" Registration .....\$60 \_\_\_\_\_

Form with payment postmarked after September 12, 2001. \_\_\_\_\_

**Meals** Complete Five-Meal Package.....\$35 \_\_\_\_\_

Save \$15 off individual meal totals.

**Individual Meals – check all you wish to purchase**

☐ 10/4 Quay luncheon .....\$10 \_\_\_\_\_

☐ 10/4 Western Cookout Dinner .....\$13 \_\_\_\_\_

☐ 10/5 Box lunch.....\$ 8 \_\_\_\_\_

☐ 10/5 Quay Dinner .....\$13 \_\_\_\_\_

☐ 10/6 Box Lunch.....\$ 6 \_\_\_\_\_

☐ Yes ☐ No Do you prefer vegetarian meals?

**TOTAL** Total Fees and Meals .....\$ \_\_\_\_\_

**Payment** ☐ Check enclosed (payable to WASHINGTON STATE TRAILS COALITION)

☐ Bill me (Require Invoice)

**Return Form To** Trail Conference 2001  
Vancouver-Clark Parks Foundation  
PO Box 2397  
Vancouver, WA 98668-2397

**Questions?** For registration questions, call Kelly Puntney  
(360/ 696-8171) or Florence Wager (360/ 694-2364).  
For other inquiries, call or email Jeri Krampetz  
[877/ 854-9415 (toll free) -- jerikramp@aol.com].

**Check the Saturday field trip you  
plan to attend (see brochure for info.).**

☐ Bicycle the Discovery Trail on the  
Burnt Bridge Creek Greenway.

☐ Check if you would like information  
on bicycle rental.

☐ Hike Frenchman's Bar on the  
Columbia River to Vancouver Lake.

☐ Hike the Chinook Trail on the East  
Fork of the Lewis River.

-----

-----

\_\_\_\_\_  
\_\_\_\_\_  
\_\_\_\_\_

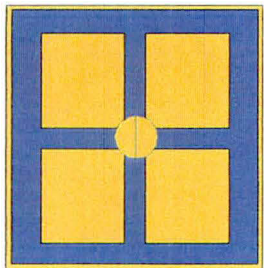
PLACE  
STAMP  
HERE

**Trail Conference 2001  
Vancouver-Clark Parks Foundation  
PO Box 2397  
Vancouver, WA 98668-2397**

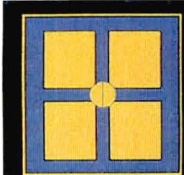
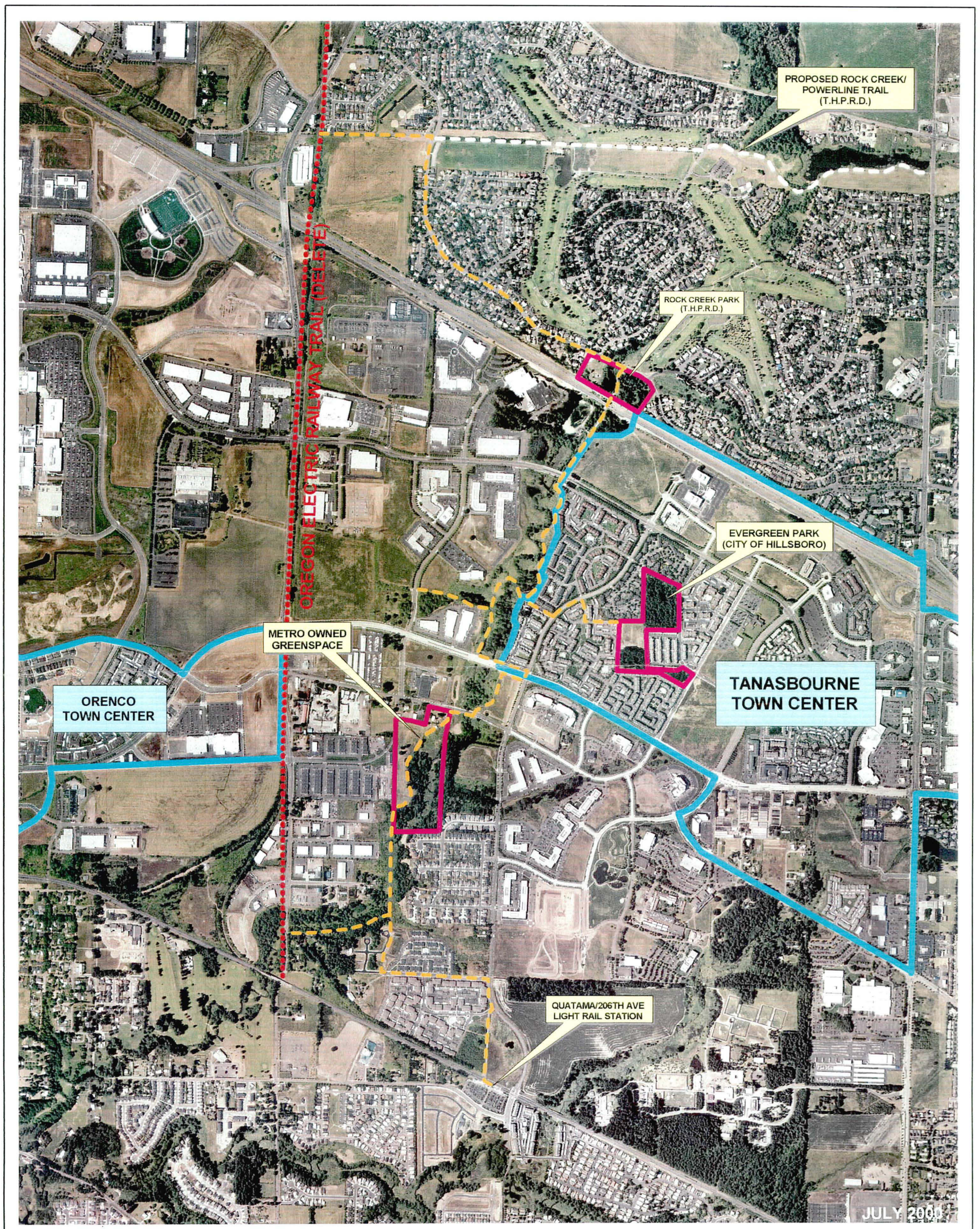




04701



# NORTH HILLSBORO/ROCK CREEK TRAIL ALTERNATIVES

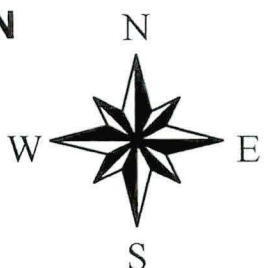


CITY OF  
**HILLSBORO**  
PARKS & RECREATION

1000 0 1000 2000 Feet



PROPOSED ROCK CREEK TRAIL LOCATION  
PROPOSED OREGON ELECTRIC RR TRAIL  
METRO 2040 TOWN CENTERS  
PARK/OPEN SPACE PROPERTIES





# ***DISCUSSION DRAFT CONCEPT***

## **WHAT DOES IT MEAN TO BE INCLUDED IN THE REGIONAL SYSTEM?**

### **Background:**

The Greenspaces Master Plan (1992) envisions a cooperative regional system of natural areas, open spaces, trails, and greenspaces for people and wildlife. The Master Plan is not a regulatory plan, but was written to implement this vision through cooperating with our local providers and raising the community awareness of natural planning issues.

After almost a decade of implementing the Greenspaces Master Plan, Chapter 3 (Parks, Natural Areas, Open Spaces, and Recreational Facilities) of the Regional Framework Plan (1996) directs Metro to reinventory parks, natural areas and trails in the metro region and to cooperatively develop policies to protect and manage these areas. The Greenspaces Regional System (a network of parks, greenspaces, trails, and wildlife corridors) was identified in 2000 and was based on an inventory of natural resources parks and trails. The Greenspaces Regional System consists of both public and private components. A major component of the public ownership consists of federal, state and local park providers that manage both natural resources based parks and other recreational parks. This memo outlines three levels of natural resource protection, which is dependent upon availability of funds, for all park providers in the Greenspaces Regional System.

### **Goals:**

- To create a cooperative regional system of natural areas, open spaces, trails and greenways for fish, wildlife and people
- To protect the region's biodiversity, improve air and water quality, provide buffers between communities, and create opportunities for citizens to enjoy nature close to home.

### **Objectives:**

- To further implement the Greenspaces Master Plan (1992) and the Regional Framework Plan (1996) by fostering a coordinated, cooperative and collaborative effort between local governments and other managers of natural areas to protect natural resources.
- Metro will work through the Greenspaces Technical Advisory Committee to protect and manage components of the Regional Parks and Greenspaces System by using consistent and coordinated strategies to achieve the goals

### **Strategy:**

- To cooperatively develop Inter Governmental Agreements (IGA) between Metro and other local agencies to protect and manage the Regional Parks and Greenspaces System in order to meet the goals.

*Voluntary*

## LEVEL 1

Assumption: No level of regional funding available

and trails per C.D.

*At a minimum all publicly owned parks and greenspaces of the Regional Greenspaces System will meet the following standards and receive the following benefits:*

### Standards met:

- New trails will be sited according to local government standards that are compliant with Title 3 of the Urban Growth Management Functional Plan- ordinance (Appendix A).
- Riparian restoration will be encouraged according to Title 3 model ordinance standards (see Appendix A) or according to Clean Water Services requirements and Metro's fish and wildlife habitat conservation standards to be adopted by Metro
- Master plans will address at a minimum, Section 4 (b) of the draft Master Planning Guidelines developed by GTAC, with Metro technical help available on an as needed basis (see Appendix B).

### Benefits received:

- Technical support for siting /planning trails will be provided by Metro, upon request.
- Signage will be posted stating that the facility is part of the Regional Parks and Greenspaces System. This signage will be developed in collaboration with GTAC and provided by Metro.
- The local parks and greenspaces will be included in a Regional Greenspaces System Map published by Metro and the jurisdiction will be referenced as a cooperator in appropriate publications.
- Metro will support grant applications that assist in implementing Level 1 components.
- Cooperating agency activities such as habitat restoration projects, volunteer work days, will be promoted in the GreenScene, Metro's calendar of nature-related activities and events.

S.T. Voluntary?  
needs to be clarified

## **LEVEL 2:**

Assumption: Limited regional funding available for planning, restoration and monitoring.

*At a minimum all publicly owned parks and greenspaces of the Regional Greenspaces System will meet the following standards and receive the following benefits:*

Includes:

**LEVEL 1: ALL STANDARDS AND BENEFITS APPLY TO LEVEL 2**

**In addition, LEVEL 2**

**Standards met:**

- Cooperators will agree to implement and monitor Best Management Practices (BMP's), as recommended by GTAC, to improve water quality and protect biodiversity, and share monitoring data with Metro upon request.
- Cooperators will gather trend data on wildlife and plants in the region, and share with Metro upon request.
- Standard rules and regulations that are consistent with natural resource protection goals will be encouraged. For example, no dogs allowed in natural areas.

**Benefits received:**

- Metro will provide technical and financial assistance in implementing and monitoring the recommended BMP's.
- Subject to availability of funds, technical and financial support for trail planning, habitat restoration and monitoring will be provided by Metro.
- Environmental education and interpretive programs will be provided by Metro's environmental education program - offering assistance on an as needed basis.
- Metro will promote local cooperator projects to the media.
- Volunteer project management assistance and guidance will be offered to cooperators in the system.

### **LEVEL 3:**

Assumption: Supplemental regional funds is available for select activities related to natural resource management such as planning, education and interpretive signage, operations and maintenance.

*At a minimum all publicly owned parks and greenspaces of the Regional Greenspaces System will meet the following standards and receive the following benefits:*

Includes

**LEVEL 1: ALL STANDARDS AND BENEFITS APPLY TO LEVEL 3**

**LEVEL 2: ALL STANDARDS AND BENEFITS APPLY TO LEVEL 3**

**In addition, LEVEL 3**

**Standards met:**

- Master plans will address all the draft Master Planning Guidelines, as developed by GTAC, with Metro technical help available on an as needed basis (see Appendix B-guidelines developed by GTAC).
- Local jurisdiction will develop a park and natural area system master plan that will tie in with the Regional Parks and Greenspaces System Plan.
- Local provider's system master plan will be updated to be integrated with the Regional Parks and Greenspaces System.
- Local level GIS data (if available) on new acquisitions of parks and natural areas will be provided to update Metro's database.
- Reciprocal fee structure will be considered, where appropriate. For example, Metro's annual park pass will be good for entry at other "fee entry" facilities and vice versa.

**Benefits received:**

- Subject to availability of funds, supplemental financial resources will be available for master planning natural resource based parks in the Regional Greenspaces System.
- A limited level of operational and maintenance funds, to be determined, would be provided only to natural resource based parks in the Regional Greenspaces System.
- Funds will be available for trail development, operation and maintenance.
- A revolving loan fund for park and natural area acquisition will be created.
- Metro will offer technical assistance for acquisition of natural areas and parks.
- Funds will be available for education and interpretive outreach opportunities in natural resource based parks



change "levels" to scenarios? JT

BF → don't see any protection  
beyond what's already  
required by law

JSj → different stages you  
could graduate up, ...

Delev → some things shouldn't be  
managed this way.

## **2nd DISCUSSION DRAFT CONCEPT**

### **WHAT DOES IT MEAN TO BE INCLUDED IN THE REGIONAL SYSTEM?**

#### **Background:**

The Greenspaces Master Plan (1992) envisions a cooperative regional system of natural areas, open spaces, trails, and greenspaces for people and wildlife. The Master Plan is not a regulatory plan, but was written to implement this vision through cooperating with our local providers and raising the community awareness of natural planning issues.

After almost a decade of implementing the Greenspaces Master Plan, Chapter 3 (Parks, Natural Areas, Open Spaces, and Recreational Facilities) of the Regional Framework Plan (1996) directs Metro to reinventory parks, natural areas and trails in the metro region and to cooperatively develop policies to protect and manage these areas. The Greenspaces Regional System (a network of parks, greenspaces, trails, and wildlife corridors) was identified in 2000 and was based on an inventory of natural resources parks and trails. The Greenspaces Regional System consists of both public and private components. A major component of the public ownership consists of federal, state and local park providers that manage both natural resources resource anchor sites and other recreational parks. This memo is only applicable to all publicly owned parks and natural areas in the Regional System and it outlines three voluntary scenarios of natural resource protection, which is dependent upon availability of funds, for all park providers in the Greenspaces Regional System.

#### **Goals:**

- To create a cooperative regional system of natural areas, open spaces, trails and greenways for fish, wildlife and people
- To protect the region's biodiversity, improve air and water quality, provide buffers between communities, and create opportunities for citizens to enjoy nature close to home.

#### **Objectives:**

- To further implement the Greenspaces Master Plan (1992) and the Regional Framework Plan (1996) by fostering a coordinated, cooperative and collaborative effort between local governments and other managers of natural areas to protect natural resources.
- Metro will work through the Greenspaces Technical Advisory Committee to protect and manage components of the Regional Parks and Greenspaces System by using consistent and coordinated strategies to achieve the goals

**Strategy:**

- To cooperatively develop Inter Governmental Agreements (IGA) between Metro and other local agencies to protect and manage the Regional Parks and Greenspaces System in order to meet the goals.

**SCENARIO 1**

Assumption: No level of regional funding available

*At a minimum all publicly owned parks and greenspaces of the Regional Greenspaces System will meet the following standards and receive the following benefits:*

**Standards met:**

**ALL PARKS:**

- New trails will be sited according to local government standards that are compliant with Title 3 of the Urban Growth Management Functional Plan- ordinance (Appendix A).
- Riparian restoration will be encouraged according to Title 3 model ordinance standards (see Appendix A) or according to Clean Water Services requirements and Metro's fish and wildlife habitat conservation standards to be adopted by Metro
- Local level GIS data (if available) on new acquisitions of parks and natural areas will be provided to update Metro's database.
- Master plans will address at a minimum, Section 4 (b) of the draft Master Planning Guidelines developed by GTAC, with Metro technical help available on an as needed basis (see below).

**4(b). MASTER PLANNING –  
Assure Resource Protection**

1. Inventory existing site conditions in context of the surrounding landscape and the overall Regional System. At a minimum, describe and map existing conditions including natural, cultural, scenic, and recreational resources, ownership, zoning, land use regulations, topography, infrastructure and easements. If applicable, "existing conditions" shall also include park facilities, visitation, budgetary and operations information.
2. Assess the occurrence, value and sensitivity of the site's natural, cultural, recreational and scenic resources.
3. Identify strategies to protect and/or enhance natural and cultural resource values.
4. Identify and evaluate issues and needs and constraints and opportunities.
5. Identify management practices to protect natural, cultural and scenic resources from appropriate use and development.
6. Identify strategies to avoid or mitigate significant impacts from adjacent land uses on site uses, facilities and resources.
7. Identify strategies to avoid or mitigate significant impacts from part use on adjacent lands.

**Benefits received:**

**ALL PARKS:**

- Technical support for siting /planning trails will be provided by Metro, upon request.
- Signage will be posted stating that the facility is part of the Regional Parks and Greenspaces System. This signage will be developed in collaboration with GTAC and provided by Metro.
- The local parks and greenspaces will be included in a Regional Greenspaces System Map published by Metro and the jurisdiction will be referenced as a cooperator in appropriate publications.
- Metro will support grant applications that assist in implementing Scenario 1 components.
- Cooperating agency activities such as habitat restoration projects, volunteer work days, will be promoted in the GreenScene, Metro's calendar of nature-related activities and events.

## **SCENARIO 2:**

Assumption: Limited regional funding available for planning, restoration and monitoring.

*At a minimum all publicly owned parks and greenspaces within the Regional Greenspaces System will meet the following standards and receive the following benefits:*

Includes:

## **SCENARIO 1: ALL STANDARDS AND BENEFITS APPLY TO SCENARIO 2**

**In addition, SCENARIO 2**

**Standards met:**

### **ALL PARKS:**

- Cooperators will agree to implement Best Management Practices (BMP's), as recommended by GTAC, to improve water quality, and protect biodiversity.

### **REGIONAL NATURAL AREA SITES:**

- Cooperators will gather trend data on wildlife and plants in the region, and share with Metro upon request.
- Standard rules and regulations that are consistent with natural resource protection goals will be encouraged. For example, no dogs allowed in natural areas.

**Benefits received:**

### **ALL PARKS**

- Metro will provide technical and financial assistance in implementing the recommended Best Management Practices (BMP's) such as trail planning, habitat restoration and enhancement.
- Metro will promote local cooperator projects to the media.

### **REGIONAL NATURAL AREA SITES:**

- Environmental education and interpretive programs will be provided by Metro's environmental education program - offering assistance on an as needed basis.
- Volunteer project management assistance and guidance will be offered to cooperators in the system.
- Metro will provide technical and financial assistance for planning, habitat restoration and monitoring of natural resources on regional sites.

### **SCENARIO 3:**

Assumption: Supplemental regional funds are available for select activities related to natural resource management such as planning, education and interpretive signage, operations and maintenance.

*At a minimum all publicly owned parks and greenspaces of the Regional Greenspaces System will meet the following standards and receive the following benefits:*

Includes

**SCENARIO 1: ALL STANDARDS AND BENEFITS APPLY TO SCENARIO 3**

**SCENARIO 2: ALL STANDARDS AND BENEFITS APPLY TO SCENARIO 3**

**In addition, SCENARIO 3**

**Standards met:**

#### **REGIONAL NATURAL AREA SITES:**

- Master plans will address all the draft Master Planning Guidelines, as developed by GTAC, with Metro technical help available on an as needed basis (see Appendix B-guidelines developed by GTAC).
- Reciprocal fee structure will be considered, where appropriate. For example, Metro's annual park pass will be good for entry at other "fee entry" facilities and vice versa.
- When local system master plan are developed or being updated, local partners should consider linking local trails to regional trails and consider acquiring and or protecting privately owned components of the Regional System.

**Benefits received:**

#### **REGIONAL NATURAL AREA SITES:**

- Funds will be available for regional trail development, operation and maintenance.
- Subject to availability of funds, supplemental financial resources will be available for master planning
- A limited level of operational and maintenance funds, to be determined, would be provided.
- A revolving loan fund for natural area acquisition will be created.
- Metro will offer technical assistance for acquisition of natural areas.
- Funds will be available for education and interpretive outreach opportunities.

## APPENDIX B

### Functional Plan for Components of the Regional System

Title \_\_\_\_: MASTER PLANNING FOR PUBLICLY OWNED COMPONENTS OF THE REGIONAL SYSTEM OF PARKS, OPEN SPACES, NATURAL AREAS, TRAILS AND GREENWAYS

#### Section 1. Intent

Establish master planning guidelines that assure:

- a. a level of consistency and continuity in the development of master plans for publicly owned components of the Regional System;
- b. consistent management, development and operation of publicly owned components of the Regional System; and
- c. protection of natural resources on publicly owned components of the Regional System.

#### Section 2. Applicability

- A. This Title applies to publicly owned components of the Regional System where formal public use is occurring or expected to occur in the future and:
  1. A master plan does not exist.
  2. A change in use, expansion in use or a new public use is being proposed to an existing master plan that was adopted or updated by a governing body prior to the effective date of this Title.
  3. A master plan or master plan update was completed but not formally adopted by a governing body.
- B. This Title does not apply to publicly owned components of the Regional System when:
  1. Master plans have been reviewed, updated and adopted by a governing body prior to the effective date of this Title.
  2. A local park master plan has been adopted pursuant to Oregon Administrative Rule (OAR) 660, Division 34, section 0040, for amending an acknowledged comprehensive plan and zoning ordinance to implement a local park master plan.
  3. Master plans for state owned park lands have been adopted pursuant to OAR 660, Div. 34, sections 0000-0035.
  4. Lands are owned by the Federal government and Metro has no jurisdiction.

#### Section 3. Implementation Alternatives for Cities and Counties and State

- A. Managers of publicly owned components of the Regional System shall comply with this Title by:
  1. Initiating and completing a park master planning process which addresses the guidelines in section 4 of this Title prior to the development of facilities that support formal public use of the site.

or

2. Updating an existing park master plan that was adopted by a governing body prior to the effective date of this Title when a change in use, expansion in use or a new public use is being proposed. Updated master plans will address the master planning guidelines in section 4 of this Title.  
or
  3. Demonstrating that a local park master plan was prepared and adopted pursuant to OAR 660, Div. 34, section 0040.  
or
  4. Demonstrating that a master plan for state owned park land was prepared and adopted pursuant to OAR 660, Div. 34, sections 0000-0035.
- B. At the effective date of this Title, managers of publicly owned components of the Regional System shall document the master planning status of each of these components by submitting a completed form (Appendix A) to the Department Director, Metro Regional Parks and Greenspaces.
1. When a local jurisdiction commences a master plan for any publicly owned component of the Regional System, notice shall be provided in writing to Metro Regional Parks and Greenspaces.
  2. Upon adoption of a master plan for any publicly owned component of the Regional System, the managing agency shall provide a copy of the adopted plan to Metro Regional Parks and Greenspaces.
- C. Any major variation to a master plan adopted pursuant to this Title shall be incorporated by an amendment process. Amended master plans shall be consistent with master planning guidelines in section 4 of this Title, be publicly noticed and be adopted by the same governing body that adopted the master plan.

## Section 4. Master Planning Guidelines

### A. Master Planning Guidelines

1. The purpose of these guidelines is to assure a level of consistency in the management of components of the Regional System for the protection of fish, wildlife, botanic, scenic and cultural values and the provision of primarily natural resource dependent recreation and education opportunities.
2. In developing a master plan, managers of components of the Regional System shall conform to the following guidelines:
  - a. **Provide Meaningful Public Involvement**  
At a minimum the master planning process shall include:
    1. Establishment of a project advisory committee for the purpose of bringing stakeholder perspectives to the review and development of the master planning process and products. A project advisory committee should include but not be limited to representatives of park constituents, special interest groups, Metro Regional Parks and Greenspaces, relevant natural resource/regulatory agencies general public, local park advisory board members, local planning agencies and other appropriate stakeholders. If preferred, an existing park advisory committee may be used for this purpose.



2. Creation of a project mailing list and notification to interested citizens about project information. It is the intent of this provision to encourage the greatest possible public involvement in decisions regarding the management of publicly owned components of the regional system.
  3. Delivery of at least two public workshops.
  4. Publication of a draft master plan for public comment and review. Public review period shall last not less than three weeks.
  5. Formal adoption by the appropriate governing body.
- b. **Assure Resource Protection**
1. Inventory existing site conditions in context of the surrounding landscape and the overall Regional System. At a minimum, describe and map existing conditions including natural, cultural, scenic, and recreational resources, ownership, zoning, land use regulations, topography, infrastructure and easements. If applicable, "existing conditions" shall also include park facilities, visitation, budgetary and operations information.
  2. Assess the occurrence, value and sensitivity of the site's natural, cultural, recreational and scenic resources.
  3. Identify strategies to protect and/or enhance natural and cultural resource values.
  4. Identify and evaluate issues and needs and constraints and opportunities.
  5. Identify management practices to protect natural, cultural and scenic resources from appropriate use and development.
  6. Identify strategies to avoid or mitigate significant impacts from adjacent land uses on site uses, facilities and resources.
  7. Identify strategies to avoid or mitigate significant impacts from part use on adjacent lands.
- c. **Identify Surplus Property**  
Identify lands that are surplus to the needs of the master plan and recommendations for alternative use.
- d. **Respond to Regional Recreation Demands and Trends**  
Master plans will be responsive to recreation demands and trends identified in the State Comprehensive Outdoor Recreation Plan (SCORP).
- e. **Identify Appropriate Public Uses and Activities**  
Provide appropriate natural resource based recreation, education, interpretive and stewardship opportunities and related facilities at the site.
1. Identify a preferred range of public opportunities.
  2. Identify and locate necessary site improvements to support preferred public uses.
- f. **Achieve Land Use and Zoning Compatibility**  
Master Plan must be compatible with relevant statewide goals and laws and the relevant sections of local comprehensive plans and zoning codes.

- g. **Produce Master Plan Document**  
At a minimum master plan document shall include sections on:
  - 1. Existing conditions
  - 2. Issues and Needs
  - 3. Resource Protection and Management
  - 4. Recommended public uses and activities
  - 5. Recommended site improvements
  - 6. Implementation
  - 7. Public Involvement
- h. **Adoption**
  - 1. Present draft master plan document to parks advisory board, if applicable, and appropriate governing body for approval and adoption.
  - 2. Provide Metro with a copy of the adopted master plan.

## **Section 5. Definitions**

**Formal Public Use** - Public access and use is intentionally provided and managed by a park provider. Necessary site improvements are present to support preferred public uses.

**Governing Body** - The official decision making body for a local jurisdiction, park district or land owning agency (or their formal designee). When more than one agency shares management responsibility for a publicly owned component of the regional system, all may need approval from their respective governing bodies (or their formal designees).

**Major Variation** - A change in use, expansion in use, or a new public use being proposed to an existing master plan.

**Master Plan** - The document which formally establishes direction for the development, operation, maintenance, management and programming for specific units of land assembled as part of the Regional System of parks, open space, natural areas, trails, and greenways.

**Natural Resource Regulatory Agency** - An agency that administers regulatory environmental protection programs including such as US Fish and Wildlife (USFWS), Oregon Department of Fish and Wildlife (ODFW), National Marine Fisheries Service (NMFS), Army Corps of Engineers (ACOE), Division of State Lands (DSL), Department of Environmental Quality (DEQ), Bureau of Environmental Services (BES), Natural Resources Conservation Service (NRCS), Environmental Protection Agency (EPA).

**Natural resource based recreation** - Recreation activities that require a specific natural resource, or are customarily pursued in a predominately natural setting. Examples include, but are not necessarily limited to picnicking, camping, fishing, hiking, wildlife viewing and boating.

**Project Advisory Committee** - A newly created review committee designated by a jurisdiction whose purpose is to bring stakeholder perspectives to the review and development of site specific master planning processes and products. Committee membership should include but not be limited to representatives of park constituents, Metro Regional Parks and Greenspaces, natural

resource regulatory agencies, general public, local park advisory board members, local planning agencies and other appropriate stakeholders.

**Regional Component** - An individual park, natural area, open space, trail or greenway that is part of the overall landscape identified to be included in the Regional System.

**Regional System** - The interconnected system of regionally significant parks, natural areas, open spaces, trails, greenways, for wildlife, fish and people as described in Metro's Regional Framework Plan.

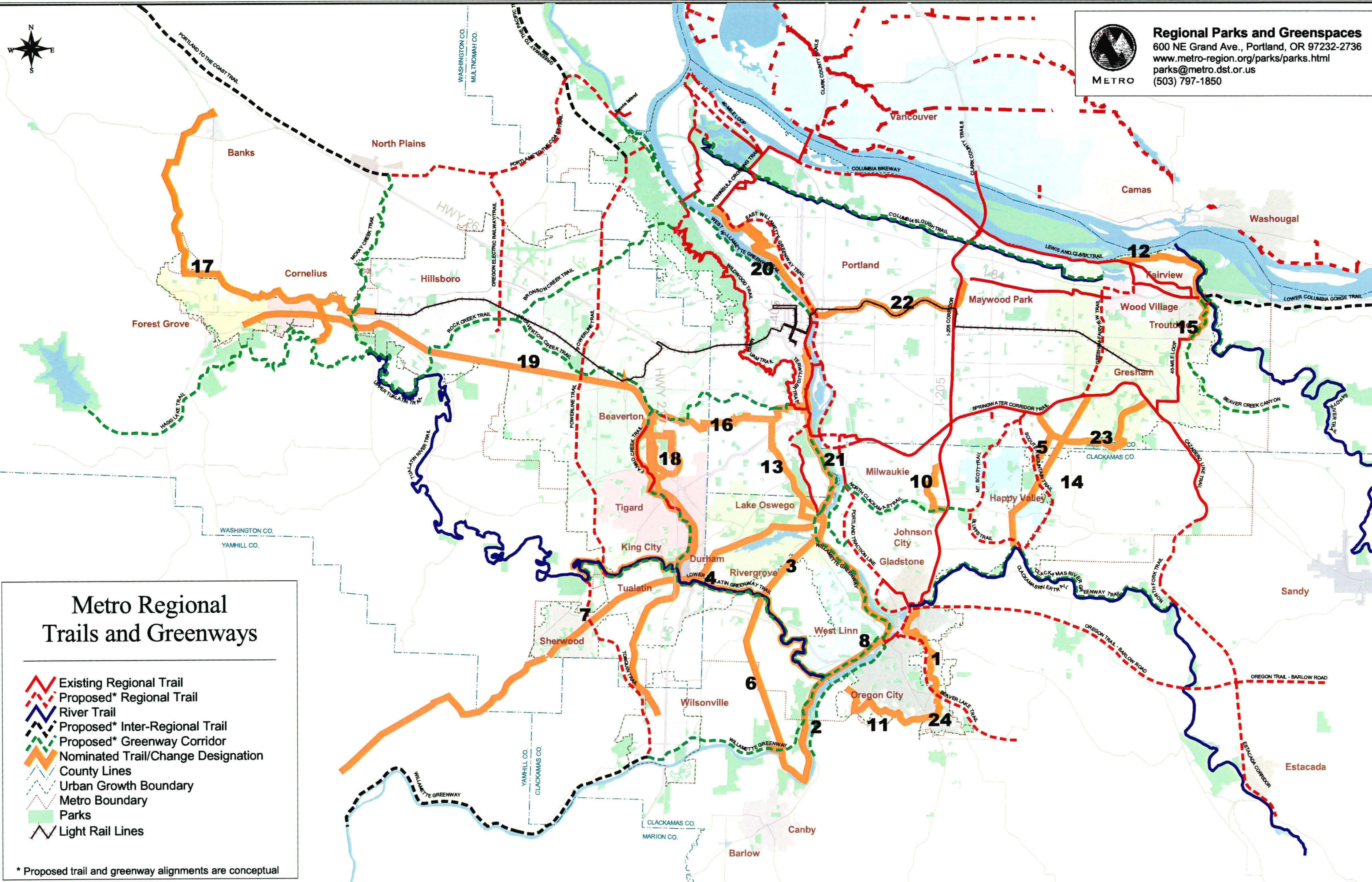
**Surplus Property** - Property within the master planning study area that is not needed to satisfy goals of the master plan.







**Regional Parks and Greenspaces**  
600 NE Grand Ave., Portland, OR 97232-2736  
[www.metro-region.org/parks/parks.html](http://www.metro-region.org/parks/parks.html)  
[parks@metro.dst.or.us](mailto:parks@metro.dst.or.us)  
(503) 797-1850



## Metro Regional Trails and Greenways

- Existing Regional Trail
- Proposed\* Regional Trail
- River Trail
- Proposed\* Inter-Regional Trail
- Proposed\* Greenway Corridor
- Nominated Trail/Change Designation
- County Lines
- Urban Growth Boundary
- Metro Boundary
- Parks
- Light Rail Lines

\* Proposed trail and greenway alignments are conceptual



# **THREE RIVERS LAND CONSERVANCY NEEDS ASSESSMENT/FOCUS AREA SURVEY**

*Three Rivers is undertaking a Strategic Planning Process to expand private land conservation efforts in Metropolitan Portland. As Three Rivers plans its Conservation Agenda for the next three years, we'd like your input. This survey asks questions regarding the need for a land trust and which areas you would like to see protected. Your responses will help direct where the Conservancy puts their time, energy and resources.*

*To fill out the survey, simply hit the "reply to sender" button (not "reply to all"), put an "X" in the appropriate space or write in a response, and then hit "send" when finished.*

*Please return the survey by October 11, 2001. Thank you very much for your time.*

1. Please describe your role in open space protection in metropolitan Portland:

- ☐ Elected Official
- ☐ Local Park Provider
- ☐ Land Use Planner
- ☐ Watershed Council/Friends group
- ☐ Citizen Participation Organization (CPO)/Neighborhood Assoc.
- ☐ Environmental nonprofit organization
- ☐ Concerned Citizen
- ☐ Other (please describe) \_\_\_\_\_

2. Do you know Three Rivers Land Conservancy?

- ☐ Well      ☐ A little      ☐ Not at all

3. Are you familiar with the functions of a land trust, such as The Nature Conservancy or Trust for Public Land?      ☐ Yes      ☐ No

4. Do you think that the Portland metropolitan area needs a group like Three Rivers promoting private land conservation or do Metro and local governments cover open space protection adequately?

- ☐ Metropolitan Portland needs a viable strategic private land conservation organization.
- ☐ Regional and local government can adequately cover open space protection.

*Three Rivers Land Conservancy's main strategy is to work with landowners on a voluntary basis to preserve land by donation, acquisition or conservation easements. Please keep this in mind when answering the following questions:*

5. Do you see examples where a land trust might be able to provide assistance in your area?      ☐ Yes      ☐ No

6. How can a land trust assist in your area? (Chose all that apply).

- ☐ Outright purchase of land
- ☐ Hold conservation easement
- ☐ Educate citizens and organizations on conservation issues
- ☐ Make trail connections
- ☐ Other (please describe) \_\_\_\_\_

7. Pick the top three resources would you most like to see a metropolitan land trust protect:

- ☐ Stream and riparian\* areas
- ☐ Floodplains
- ☐ Wildlife corridors
- ☐ Upland wildlife habitat
- ☐ Trail Connections
- ☐ Scenic vista protection
- ☐ Neighborhood natural areas\*\*
- ☐ Cultural resources, such as historic properties
- ☐ Farmland
- ☐ Passive recreation areas
- ☐ Other (please describe) \_\_\_\_\_

8. Are there any specific geographic areas, such as watersheds, where you would like to see a land trust focus its attention and why? (Please be as specific as you can).

*If you represent a friends group, watershed council or government agency, please answer the following additional questions.*

9. Would private land conservation (mainly acquisition) support or compliment the work of your organization? ☐ Yes ☐ No
10. If you answered yes to #9, please describe how, along with potential opportunities to work in partnership with your organization. Do you have a written conservation or long term plan or map that you can share?
11. If you answered yes to #9, are there existing or planned land acquisition/ protection efforts already occurring in these areas? ☐ Yes ☐ No
12. If you work for a governmental agency, is obtaining conservation easements part of your regulatory strategy for protection of habitat? ☐ Yes ☐ No

13. Is your group interested in partnering with a land trust? \_\_\_\_ Yes \_\_\_\_ No
14. May we contact you with additional questions: \_\_\_\_ Yes \_\_\_\_ No
15. Are you interested in attending a follow-up meeting in November?  
\_\_\_\_ Yes \_\_\_\_ No

Name: \_\_\_\_\_  
Address: \_\_\_\_\_  
Phone: \_\_\_\_\_

***Thank you, again, for your time.***

For additional information contact:

Virginia Bowers  
Three Rivers Land Conservancy  
PO Box 1116  
Lake Oswego, OR 97035  
503 699-9825  
[vbowers@trlc.org](mailto:vbowers@trlc.org)

**\*banks of the stream, also the area adjacent to and influenced by the stream .**

**\*\*defined as natural areas less than 5 acres in fully developed areas)**



OCT 01

**Regional Goal 5 Fish and Wildlife Habitat  
Fall 2001 Meetings / Decision Dates  
(Continued)**

**Decision 2: Is the information provided adequate with regard to quantity, quality and location?**

**Decision 3: Of the Riparian Corridor and Wildlife habitat features, which are "significant resources" and of those, which are "regional resources"**

- October 17 - NR Committee -. Hear presentation of staff discussion paper. Begin dialogue concerning what constitutes "significant resources" and "regional resources"
- October 24 - MPAC - discussion of significant resources and regional resources
- November 7 - MTAC - discussion of significant resources and regional resources
- November 7 - NR Committee - testimony about significant resources and regional resources
- November 14 - MPAC - discussion of significant resources and regional resources
- November 16 - Goal 5 TAC recommendations on significant resources and regional resources
- November 19 - WRPAC - recommendations on significant resources and regional resources
- November 21 - NR Committee - Continued testimony on significant resources and regional resources. Staff present draft information by resource site concerning location, quantity and quality for riparian corridors and wildlife resources and recommendations for significant resources and regional resources.
- November 21 - MTAC - recommendations on significant resources and regional resources
- November 26 - Final public comments due
- November 28 - MPAC Goal 5 recommendations on significant resources and regional resources
- December 5 - NR Committee - Take action on a resolution concerning significant resources and regional resources
- December 6 - Metro Council - discussion of significant resources, regional resources
- December 13 - Metro Council - decision on Goal 5 inventory, including action on significant resources, regional resources.

**Regional Goal 5 Fish and Wildlife Habitat  
Fall 2001 Meetings / Decision Dates  
10/3/01 (revised)**

**Decision 1. Are the draft criteria and maps identifying Goal 5 riparian corridors and wildlife features sufficient?**

**September 19 - NR Committee - introduce region-wide riparian corridor maps, staff recommend that criteria are complete and sufficient.**

**September 20 - Tualatin Basin Steering Committee - review region wide riparian mapping and criteria, uplands pilot area and criteria**

**September 21 - G5TAC - review region wide riparian mapping and (region-wide) upland mapping**

**September 26 - MPAC - review region-wide riparian and upland mapping and review criteria**

**September 28 - region-wide riparian maps (detailed quad maps) available on FTP site; region wide upland map also available**

**October 1 - Tualatin Basin Coordinating Committee - discussion of region-wide riparian and upland mapping and review criteria**

**October 3 - MTAC - discuss and make recommendations concerning region-wide riparian mapping and upland mapping and criteria**

**October 3 - NR Committee - take testimony on region-wide riparian, upland mapping and criteria**

**October 10 - MPAC - recommendations on region-wide riparian and upland mapping and criteria**

**October 12 - G5 TAC - - recommendations on region-wide riparian and upland mapping and criteria**

**October 15 - WRPAC - recommendations on region-wide riparian and upland mapping and criteria**

**October 17 - NR Committee - hear testimony on riparian and upland mapping and criteria. Also, see below for other October 17 NR proceedings.**

**November 7 - NR Committee - final testimony on riparian and upland mapping and criteria.**

# Parks in the Regional System

(data is from the draft regional system map and the 1998 parks inventory)

ID	Name	Owner	Operator	Acreage	Park Type
529	Audubon Society of Portland	Audubon Society of Portland	Audubon Society of Portland	140.00	Natural
701	Burlington Bottoms	Bonneville Power Administration	ODFW	417.00	Natural
5129	Quatama Powerline Path	Brolin Co	THPRD	0.40	Trail
5123	Payless Park	City of Beaverton	THPRD	3.21	Urban
24	Steamboat Park	City of Cornelius	City of Cornelius	0.78	Natural
34	Durham City Park	City of Durham	City of Durham	39.00	Natural
35	Tualatin View Greenway Trails	City of Durham	City of Durham	4.22	Trail
459	Gumdrop Park	City of Fairview	City of Fairview	0.06	Urban
455	Handy-Nachakokee Park	City of Fairview	City of Fairview	1.06	Urban
460	Langley Park	City of Fairview	City of Fairview	0.45	Urban
448	North Lake Shore Park	City of Fairview	City of Fairview	5.00	Urban
453	Salish Ponds Park	City of Fairview	City of Fairview	70.00	Natural
458	Stone Park	City of Fairview	City of Fairview	0.22	Urban
44	Cross Park	City of Gladstone	City of Gladstone	4.58	Urban
40	High Rocks Park	City of Gladstone	City of Gladstone	1.55	Natural
43	Meldrum Bar Park and Dahl Beach	City of Gladstone	City of Gladstone	100.00	Urban
7158	Butler Creek Neighborhood Park	City of Gresham	City of Gresham	3.60	Urban
7162	Kane Road Neighborhood Park	City of Gresham	City of Gresham	9.50	Urban
7150	Main City Park	City of Gresham	City of Gresham	17.50	Urban
7000	Open Space 1 Hunters Highland A	City of Gresham	City of Gresham	1.70	Natural
7100	Open Space 101 Leomark Strong	City of Gresham	City of Gresham	18.47	Natural
7101	Open Space 102 El Camino Lot 18	City of Gresham	City of Gresham	0.05	Natural
7102	Open Space 103 Van Zyl	City of Gresham	City of Gresham	6.43	Natural
7103	Open Space 104 Kelly Creek Pekrul	City of Gresham	City of Gresham	0.05	Natural
7104	Open Space 105 Raney 1994	City of Gresham	City of Gresham	1.06	Natural

<b>ID</b>	<b>Name</b>	<b>Owner</b>	<b>Operator</b>	<b>Acreage</b>	<b>Park Type</b>
7105	Open Space 106 Shady Cove Lot 2	City of Gresham	City of Gresham	1.68	Natural
7106	Open Space 107 Dawn Crest Estates D	City of Gresham	City of Gresham	2.24	Natural
7107	Open Space 108 Whispering Heights A	City of Gresham	City of Gresham	9.43	Natural
7010	Open Space 11 Johnson Creek	City of Gresham	City of Gresham	22.16	Natural
7109	Open Space 110 Malcom	City of Gresham	City of Gresham	1.86	Natural
7110	Open Space 111 Ranes 1995	City of Gresham	City of Gresham	1.43	Natural
7112	Open Space 113 Molthu	City of Gresham	City of Gresham	5.43	Natural
7114	Open Space 115 Hunters Highland AA	City of Gresham	City of Gresham	1.07	Natural
7117	Open Space 118 Hunters Highland LL	City of Gresham	City of Gresham	2.99	Natural
7011	Open Space 12 Butler Creek	City of Gresham	City of Gresham	9.71	Natural
7111	Open Space 12 Houser	City of Gresham	City of Gresham	7.20	Natural
7119	Open Space 120 Hunters Highland NN	City of Gresham	City of Gresham	0.20	Natural
7121	Open Space 122 Hunters Highland Y	City of Gresham	City of Gresham	1.05	Natural
7122	Open Space 123 Hunters Highland Z	City of Gresham	City of Gresham	0.57	Natural
7125	Open Space 126 Lima Moran A	City of Gresham	City of Gresham	0.57	Natural
7126	Open Space 127 Northslope B	City of Gresham	City of Gresham	0.03	Trail
7128	Open Space 129 Willowbrook Additn I	City of Gresham	City of Gresham	0.06	Trail
7012	Open Space 13 Binford Lake A	City of Gresham	City of Gresham	5.56	Natural
7129	Open Space 130 Giese Dlc	City of Gresham	City of Gresham	0.44	Natural
7132	Open Space 133 Fairway Heights A	City of Gresham	City of Gresham	9.08	Natural
7133	Open Space 134 Dawncrest C	City of Gresham	City of Gresham	0.07	Trail
7134	Open Space 135 Childrens World Walk	City of Gresham	City of Gresham	0.02	Trail
7136	Open Space 137 Olson	City of Gresham	City of Gresham	4.29	Natural
7137	Open Space 138 Farah	City of Gresham	City of Gresham	13.76	Natural
7138	Open Space 139 Hogan	City of Gresham	City of Gresham	5.00	Natural
7013	Open Space 14 Binford Lake Walkway	City of Gresham	City of Gresham	0.04	Trail
7139	Open Space 140 Bass	City of Gresham	City of Gresham	0.85	Natural
7140	Open Space 141 United Properties	City of Gresham	City of Gresham	2.20	Natural
7141	Open Space 142 Hunters Highland VII	City of Gresham	City of Gresham	18.06	Natural

<b>ID</b>	<b>Name</b>	<b>Owner</b>	<b>Operator</b>	<b>Acreage</b>	<b>Park Type</b>
7142	Open Space 143 Green	City of Gresham	City of Gresham	0.84	Natural
7146	Open Space 147 Baltz	City of Gresham	City of Gresham	3.01	Natural
7172	Open Space 149, Asbahr Property	City of Gresham	City of Gresham	0.00	Natural
7014	Open Space 15 Butler Creek	City of Gresham	City of Gresham	2.02	Natural
7015	Open Space 16 Butler Creek	City of Gresham	City of Gresham	2.02	Natural
7018	Open Space 19 Northslope G	City of Gresham	City of Gresham	1.17	Natural
7001	Open Space 2 Hunters Highland B	City of Gresham	City of Gresham	3.15	Natural
7019	Open Space 20 Willowbrook O	City of Gresham	City of Gresham	1.30	Natural
7020	Open Space 21 Willowbrook W	City of Gresham	City of Gresham	0.52	Natural
7021	Open Space 22 Willowbrook V	City of Gresham	City of Gresham	1.58	Natural
7024	Open Space 25 Willowbrook P	City of Gresham	City of Gresham	2.98	Natural
7025	Open Space 26 Willowbrook D	City of Gresham	City of Gresham	1.33	Natural
7027	Open Space 28 Willowbrook Q	City of Gresham	City of Gresham	0.81	Natural
7002	Open Space 3 Hunters Highland D	City of Gresham	City of Gresham	2.25	Natural
7029	Open Space 30 Cistina Bush Park A	City of Gresham	City of Gresham	2.94	Natural
7030	Open Space 31 Johnson Creek	City of Gresham	City of Gresham	5.73	Natural
7031	Open Space 32 Squire Brook F	City of Gresham	City of Gresham	1.60	Natural
7032	Open Space 33 Meadowgreen Park B	City of Gresham	City of Gresham	3.50	Natural
7034	Open Space 35 Squire Brook A	City of Gresham	City of Gresham	4.28	Natural
7035	Open Space 36 Squire Brook I	City of Gresham	City of Gresham	10.67	Natural
7036	Open Space 37 Johnson Creek	City of Gresham	City of Gresham	2.92	Natural
7037	Open Space 38 Meadowgreen Park A	City of Gresham	City of Gresham	8.74	Natural
7038	Open Space 39 Johnson Creek	City of Gresham	City of Gresham	5.07	Natural
7003	Open Space 4 Hunters Highland E	City of Gresham	City of Gresham	0.09	Natural
7039	Open Space 40 Walters Hill	City of Gresham	City of Gresham	24.64	Natural
7040	Open Space 41 Childrens World	City of Gresham	City of Gresham	9.06	Natural
7041	Open Space 42 Childrens World 21 3	City of Gresham	City of Gresham	7.04	Natural
7042	Open Space 43 Dawn Crest Estates B	City of Gresham	City of Gresham	12.65	Natural
7043	Open Space 44 Childrens World 27 1	City of Gresham	City of Gresham	1.01	Natural

<b>ID</b>	<b>Name</b>	<b>Owner</b>	<b>Operator</b>	<b>Acreage</b>	<b>Park Type</b>
7044	Open Space 45 Dawncrest B	City of Gresham	City of Gresham	0.98	Natural
7045	Open Space 46 Dawncrest A	City of Gresham	City of Gresham	5.83	Natural
7046	Open Space 47 Crimson Park A	City of Gresham	City of Gresham	1.02	Natural
7004	Open Space 5 Hunters Highland F	City of Gresham	City of Gresham	0.09	Natural
7050	Open Space 51 Marwin Terrace A	City of Gresham	City of Gresham	0.95	Natural
7052	Open Space 53 Kelly Creek Greenway	City of Gresham	City of Gresham	4.52	Natural
7053	Open Space 54 Kelly Creek	City of Gresham	City of Gresham	1.06	Natural
7054	Open Space 55 Kelly Creek	City of Gresham	City of Gresham	2.04	Natural
7055	Open Space 56 Kellycrest A	City of Gresham	City of Gresham	0.17	Natural
7056	Open Space 57 Brookfield A	City of Gresham	City of Gresham	0.53	Natural
7057	Open Space 58 Knollbrook Estates D	City of Gresham	City of Gresham	1.05	Natural
7058	Open Space 59 Kelly Creek Place C	City of Gresham	City of Gresham	1.72	Natural
7005	Open Space 6 Hunters Highland H	City of Gresham	City of Gresham	0.37	Natural
7059	Open Space 60 Kelly Creek	City of Gresham	City of Gresham	3.26	Natural
7060	Open Space 61 Grant Butte	City of Gresham	City of Gresham	10.25	Natural
7062	Open Space 63 Hogan Trailhead	City of Gresham	City of Gresham	1.58	Natural
7063	Open Space 64 Blaine Road	City of Gresham	City of Gresham	2.00	Natural
7064	Open Space 65 Powell South	City of Gresham	City of Gresham	0.38	Natural
7065	Open Space 66 Kelly Creek	City of Gresham	City of Gresham	16.69	Natural
7066	Open Space 67 Becker Estate	City of Gresham	City of Gresham	80.50	Natural
7067	Open Space 68 Mg Forest Products	City of Gresham	City of Gresham	8.21	Natural
7068	Open Space 69 Tpl Kk	City of Gresham	City of Gresham	7.00	Natural
7006	Open Space 7 Hunters Highland C	City of Gresham	City of Gresham	4.05	Natural
7069	Open Space 70 Dawn Crest Estates	City of Gresham	City of Gresham	13.94	Natural
7070	Open Space 71 Runyan	City of Gresham	City of Gresham	9.00	Natural
7071	Open Space 72 Kelly Creek Estates	City of Gresham	City of Gresham	0.48	Natural
7072	Open Space 73 Allen	City of Gresham	City of Gresham	4.97	Natural
7073	Open Space 74 Popma	City of Gresham	City of Gresham	2.07	Natural
7074	Open Space 75 Karrick	City of Gresham	City of Gresham	6.68	Natural

<b>ID</b>	<b>Name</b>	<b>Owner</b>	<b>Operator</b>	<b>Acreage</b>	<b>Park Type</b>
7075	Open Space 76 Cook	City of Gresham	City of Gresham	2.80	Natural
7076	Open Space 77 Van Gorder	City of Gresham	City of Gresham	19.98	Natural
7077	Open Space 78 Jones & Johnson	City of Gresham	City of Gresham	2.58	Natural
7078	Open Space 79 Robinson	City of Gresham	City of Gresham	6.16	Natural
7007	Open Space 8 Hunters Highland G	City of Gresham	City of Gresham	0.03	Trail
7079	Open Space 80 Cascade Glen C	City of Gresham	City of Gresham	2.15	Natural
7080	Open Space 81 Hunters Highland	City of Gresham	City of Gresham	19.21	Natural
7081	Open Space 82 Hunters Highland Ff	City of Gresham	City of Gresham	23.18	Natural
7082	Open Space 83 Hunters Highland Ii	City of Gresham	City of Gresham	31.36	Natural
7083	Open Space 84 Leenders & Moore	City of Gresham	City of Gresham	14.45	Natural
7084	Open Space 85 Childrens World	City of Gresham	City of Gresham	7.15	Natural
7085	Open Space 86 Chambers Donation 93	City of Gresham	City of Gresham	1.26	Natural
7086	Open Space 87 Camp	City of Gresham	City of Gresham	1.66	Natural
7087	Open Space 88 Hovgaard	City of Gresham	City of Gresham	1.65	Natural
7088	Open Space 89 Wilson	City of Gresham	City of Gresham	10.49	Natural
7090	Open Space 91 Shimmering Pines F	City of Gresham	City of Gresham	0.08	Trail
7092	Open Space 93 Chambers	City of Gresham	City of Gresham	14.96	Natural
7093	Open Space 94 Chambers Donation 94	City of Gresham	City of Gresham	3.31	Natural
7094	Open Space 95 Cascade Glen 2 D&E	City of Gresham	City of Gresham	1.19	Natural
7153	Southeast Community Park	City of Gresham	City of Gresham	16.10	Urban
7171	Southwest Community Park	City of Gresham	City of Gresham	37.18	Urban
7166	Thom Neighborhood Park	City of Gresham	City of Gresham	5.50	Urban
7145	Open Space 146, Wells Fargo	City of Gresham & Metro	City of Gresham	15.32	Natural
578	Happy Valley Park	City of Happy Valley	City of Happy Valley	2.00	Urban
575	Wetland Park	City of Happy Valley	City of Happy Valley	31.00	Natural
492	Beaverton Creek Properties	City of Hillsboro	City of Hillsboro	4.50	Natural
489	Dairy Creek Park	City of Hillsboro	City of Hillsboro	24.00	Natural
495	Enschede Estates	City of Hillsboro	City of Hillsboro	19.10	Natural
506	Lower Rock Creek Properties	City of Hillsboro	City of Hillsboro	4.50	Natural

<b>ID</b>	<b>Name</b>	<b>Owner</b>	<b>Operator</b>	<b>Acreage</b>	<b>Park Type</b>
505	Middle Rock Creek Properties	City of Hillsboro	City of Hillsboro	21.50	Natural
482	Noble Woods Park	City of Hillsboro	City of Hillsboro	38.00	Natural
502	Rock Creek Bike Path	City of Hillsboro	City of Hillsboro	10.30	Trail
503	Rock Creek Greenway	City of Hillsboro	City of Hillsboro	31.00	Natural
483	Rood Bridge Park	City of Hillsboro	City of Hillsboro	61.00	Urban
504	Upper Rock Creek Parcels	City of Hillsboro	City of Hillsboro	10.50	Natural
494	Drake Lane Properties	City of Hillsboro & Metro	City of Hillsboro	26.00	Natural
507	Jackson Bottom Wetlands Preserve	City of Hillsboro & USA	City of Hillsboro & USA	650.00	Natural
5	Johnson City City Park	City of Johnson City	City of Johnson City	0.00	Specialty
555	Adult Community Center	City of Lake Oswego	City of Lake Oswego	2.80	Specialty
540	Bryant Woods Park	City of Lake Oswego	City of Lake Oswego	16.18	Natural
570	Canal Acres Natural Area	City of Lake Oswego	City of Lake Oswego	27.00	Natural
536	Cook's Butte Park	City of Lake Oswego	City of Lake Oswego	41.92	Natural
8026	Ellen Bergis Reserve	City of Lake Oswego	City of Lake Oswego	0.21	Natural
543	George Rogers Parks	City of Lake Oswego	City of Lake Oswego	27.10	Urban
541	Greentree Park	City of Lake Oswego	City of Lake Oswego	0.40	Urban
572	Hallinan Creek Open Space	City of Lake Oswego	City of Lake Oswego	3.80	Natural
537	Iron Mountain Park	City of Lake Oswego	City of Lake Oswego	42.11	Natural
556	Lake Oswego Golf Courses	City of Lake Oswego	City of Lake Oswego	38.92	Specialty
563	Lake Oswego Indoor Tennis Center	City of Lake Oswego	City of Lake Oswego	17.34	Specialty
534	Luscher Farm	City of Lake Oswego	City of Lake Oswego	67.30	Specialty
8023	Open Space	City of Lake Oswego	City of Lake Oswego	1.84	Natural
8022	Open Space	City of Lake Oswego	City of Lake Oswego	0.63	Natural
8021	Open Space	City of Lake Oswego	City of Lake Oswego	2.19	Natural
8038	Open Space	City of Lake Oswego	City of Lake Oswego	9.72	Natural
8019	Open Space	City of Lake Oswego	City of Lake Oswego	1.22	Natural
8018	Open Space	City of Lake Oswego	City of Lake Oswego	0.24	Natural
8033	Open Space	City of Lake Oswego	City of Lake Oswego	1.37	Natural
8040	Open Space	City of Lake Oswego	City of Lake Oswego	1.88	Natural



<b>ID</b>	<b>Name</b>	<b>Owner</b>	<b>Operator</b>	<b>Acreage</b>	<b>Park Type</b>
8041	Open Space	City of Lake Oswego	City of Lake Oswego	1.93	Natural
8017	Open Space	City of Lake Oswego	City of Lake Oswego	0.07	Natural
8010	Open Space	City of Lake Oswego	City of Lake Oswego	0.26	Natural
535	River Run Park	City of Lake Oswego	City of Lake Oswego	11.50	Natural
539	Roehr Park	City of Lake Oswego	City of Lake Oswego	2.98	Urban
569	South Shore Open Space	City of Lake Oswego	City of Lake Oswego	9.12	Natural
552	Springbrook Park	City of Lake Oswego	City of Lake Oswego	52.14	Natural
531	Waluga Park	City of Lake Oswego	City of Lake Oswego	53.20	Urban
516	Milwaukie Riverfront	City of Milwaukie	City of Milwaukie	2.90	Natural
612	Dogwood Park	City of Milwaukie	NCPRD	0.80	Urban
600	Jefferson St Boat Ramp	City of Milwaukie	NCPRD	2.10	Specialty
607	Kellogg Lake Property	City of Milwaukie	NCPRD	3.90	Undeveloped
613	Milwaukie Pioneer Cemetery	City of Milwaukie	NCPRD	2.00	Specialty
619	North Clackamas Park	City of Milwaukie	NCPRD	46.00	Urban
700	Spring Park	City of Milwaukie	NCPRD	6.32	Undeveloped
617	The Milwaukie Center	City of Milwaukie	NCPRD	0.00	Specialty
49	Atkinson Park	City of Oregon City	City of Oregon City	5.60	Urban
50	Barclay Hills Park	City of Oregon City	City of Oregon City	6.76	Urban
51	Canemah Park	City of Oregon City	City of Oregon City	0.34	Urban
54	Clackamette Park	City of Oregon City	City of Oregon City	21.76	Urban
63	Mountain View Cemetery	City of Oregon City	City of Oregon City	54.00	Specialty
104	Old Canemah Park	City of Oregon City	City of Oregon City	8.21	Urban
71	Sportcraft Landing	City of Oregon City	City of Oregon City	2.00	Specialty
62	Straight Cemetery	City of Oregon City	City of Oregon City	0.40	Specialty
56	End of the Oregon Trail Interp Cntr	City of Oregon City	Oregon Trail Foundation	8.40	Specialty
6000	Adams Community Garden	City of Portland	City of Portland	0.00	Specialty
6001	Adams Property (Fp)	City of Portland	City of Portland	0.00	Natural
6005	April Hill Park	City of Portland	City of Portland	9.79	Urban
6026	Bundy Kingsley D Property	City of Portland	City of Portland	3.74	Natural

<b>ID</b>	<b>Name</b>	<b>Owner</b>	<b>Operator</b>	<b>Acreage</b>	<b>Park Type</b>
6500	Butterfly Park	City of Portland	City of Portland	1.22	Natural
6028	Bybee Bike Path	City of Portland	City of Portland	0.57	
6029	Cathedral Park	City of Portland	City of Portland	17.50	Urban
6042	Cottonwood Bay	City of Portland	City of Portland	1.01	Natural
6044	Council Crest Park	City of Portland	City of Portland	42.12	Urban
6047	Crystal Springs Rhododendron Garden	City of Portland	City of Portland	5.00	Specialty
6052	Delta Park West	City of Portland	City of Portland	632.56	Specialty
6054	Dickinson Park	City of Portland	City of Portland	6.68	Natural
6057	Duniway Park	City of Portland	City of Portland	11.14	Urban
3025	East Buttes/Boring Lava Domes 2.059	City of Portland	City of Portland	1.50	Natural
6060	Eastmoreland Golf Course	City of Portland	City of Portland	149.59	Specialty
6061	Eastmoreland Playground	City of Portland	City of Portland	0.00	Urban
6062	Eastridge Park	City of Portland	City of Portland	3.53	Urban
6063	Elk Rock Island	City of Portland	City of Portland	15.00	Natural
6064	Errol Heights Property	City of Portland	City of Portland	2.66	Urban
6074	Forest Heights	City of Portland	City of Portland	2.93	Undeveloped
6075	Forest Park	City of Portland	City of Portland	4836.17	Natural
6078	Fulton Community Garden	City of Portland	City of Portland	0.00	Specialty
6079	Fulton Park	City of Portland	City of Portland	4.73	Urban
6080	Fulton Park Community Center	City of Portland	City of Portland	0.00	Specialty
6090	Governors Park	City of Portland	City of Portland	6.05	Natural
6093	Hamilton Park	City of Portland	City of Portland	10.19	Urban
6095	Harbor View Property	City of Portland	City of Portland	2.73	Natural
6100	Heron Lakes Golf Course	City of Portland	City of Portland	0.00	Specialty
6104	Himes George Park	City of Portland	City of Portland	35.00	Natural
6108	Holman Property (Fp)	City of Portland	City of Portland	0.00	Natural
6109	Hoyt Arboretum	City of Portland	City of Portland	214.00	Specialty
6110	Int'l Rose Test Garden	City of Portland	City of Portland	0.00	Specialty
6114	Japanese Gardens	City of Portland	City of Portland	0.00	Specialty

<b>ID</b>	<b>Name</b>	<b>Owner</b>	<b>Operator</b>	<b>Acreage</b>	<b>Park Type</b>
6118	Johnson Creek	City of Portland	City of Portland	2.89	Urban
6119	Johnson Lake	City of Portland	City of Portland	15.46	Natural
6123	Kelley Point Park	City of Portland	City of Portland	96.00	Urban
6125	Kelly Albert Park	City of Portland	City of Portland	15.57	Urban
6130	Kerr Peter Property	City of Portland	City of Portland	3.27	Natural
6132	Kingsley Property (Fp)	City of Portland	City of Portland	1.14	Urban
6141	Leach Botanical Garden	City of Portland	City of Portland	5.25	Specialty
6149	Linnton Park (Fp)	City of Portland	City of Portland	0.00	Natural
6150	Lotus Isle Park	City of Portland	City of Portland	1.11	Urban
6152	Lower Powell Butte Floodplain	City of Portland	City of Portland	16.50	Natural
6155	Macleay Park (Fp)	City of Portland	City of Portland	0.00	Natural
6156	Madrona Park	City of Portland	City of Portland	8.46	Urban
6157	Maricara Nature Park	City of Portland	City of Portland	8.23	Natural
6159	Marquam Nature Park	City of Portland	City of Portland	77.83	Natural
6160	Marshall Park	City of Portland	City of Portland	23.25	Natural
6172	Moore Island (Temporary Name)	City of Portland	City of Portland	9.86	Natural
6503	New Children's Museum/Forestry Cent	City of Portland	City of Portland	0.00	Specialty Park/Facility
6182	Norris House & Property	City of Portland	City of Portland	2.63	Specialty
6188	Oaks Bottom Wildlife Refuge	City of Portland	City of Portland	163.00	Natural
6192	Overlook House Community Center	City of Portland	City of Portland	1.54	Specialty
6193	Overlook Park	City of Portland	City of Portland	12.12	Urban
6207	Pittock Mansion and Acres	City of Portland	City of Portland	46.24	Natural
6215	Powell Butte Nature Park	City of Portland	City of Portland	574.28	Natural
6217	Powers Marine Park	City of Portland	City of Portland	12.00	Urban
6223	Riverside Property	City of Portland	City of Portland	1.26	Natural
6232	Sckavone Stadium	City of Portland	City of Portland	0.00	Specialty
6234	Sellwood Park	City of Portland	City of Portland	16.37	Urban
6235	Sellwood Park Pool	City of Portland	City of Portland	0.00	Specialty

<b>ID</b>	<b>Name</b>	<b>Owner</b>	<b>Operator</b>	<b>Acreage</b>	<b>Park Type</b>
6236	Sellwood Riverfront Park	City of Portland	City of Portland	8.75	Urban
6251	Tenino Property	City of Portland	City of Portland	3.42	Undeveloped
6252	Terwilliger Blvd Parkway	City of Portland	City of Portland	102.90	Natural
6253	Thomas & 53rd	City of Portland	City of Portland	2.95	Urban
6255	Tideman Johnson Park	City of Portland	City of Portland	6.01	Natural
6256	Toe Island (Temporary Name)	City of Portland	City of Portland	1.40	Natural
6267	Vietnam Veterans of Oregon Memorial	City of Portland	City of Portland	0.00	Specialty
6270	Washington Park	City of Portland	City of Portland	129.51	Urban
6272	Waterfront, Gov Tom McCall Park	City of Portland	City of Portland	36.59	Urban
6275	West Portland Park	City of Portland	City of Portland	2.50	Natural
6277	Westmoreland Park	City of Portland	City of Portland	47.05	Urban
6278	Willamette Moorage (Butterfly Park)	City of Portland	City of Portland	11.29	Natural
6279	Willamette Park	City of Portland	City of Portland	30.40	Urban
6284	Woods Memorial Park	City of Portland	City of Portland	31.93	Natural
6287	Wright Island (Temporary Name)	City of Portland	City of Portland	6.80	Natural
6241	Springwater Corridor	City of Portland	City of Portland & City of Gresham	190.02	Trail
6189	Oaks-Pioneer Church & Park	City of Portland	Sellwood-Moreland Imprvmnt League	0.60	Specialty
6250	Taylor Woods Property	City of Portland & Metro	City of Portland	3.24	Natural
579	Rivergrove Park	City of Rivergrove	City of Rivergrove	1.11	Urban
125	Community Campus Park	City of Sherwood	City of Sherwood	2.20	Urban
22	Stella Olsen Memorial Park	City of Sherwood	City of Sherwood	0.00	Natural
23	Ymca	City of Sherwood	Ymca	7.20	Specialty
370	113 Place Greenway	City of Tigard	City of Tigard	0.63	Natural
371	135th Ave	City of Tigard	City of Tigard	0.24	Natural
372	74th/76th Ave	City of Tigard	City of Tigard	3.14	Natural
369	Berkely Creek/Cooper Creek 1 and 2	City of Tigard	City of Tigard	6.39	Natural
373	Black Bull Park	City of Tigard	City of Tigard	2.00	Natural
374	Bonita Rd/Industrial Park	City of Tigard	City of Tigard	7.31	Natural
376	Cache Creek Park	City of Tigard	City of Tigard	11.68	Natural

<b>ID</b>	<b>Name</b>	<b>Owner</b>	<b>Operator</b>	<b>Acreage</b>	<b>Park Type</b>
377	Capstone	City of Tigard	City of Tigard	2.13	Natural
378	Castle At Brittany	City of Tigard	City of Tigard	0.78	Natural
379	Clydesdale	City of Tigard	City of Tigard	0.30	Natural
366	Cook Park	City of Tigard	City of Tigard	79.00	Urban
399	Dick's Landing	City of Tigard	City of Tigard	6.40	Natural
382	Dover Landing	City of Tigard	City of Tigard	3.39	Natural
367	Englewood Park	City of Tigard	City of Tigard	14.97	Urban
384	Fanno Creek	City of Tigard	City of Tigard	2.14	Natural
359	Fanno Creek Park	City of Tigard	City of Tigard	21.80	Natural
388	Gentle Woods	City of Tigard	City of Tigard	1.27	Natural
390	Greenburg Rd	City of Tigard	City of Tigard	0.11	Natural
393	Leron #3	City of Tigard	City of Tigard	5.01	Natural
363	Main Street Park	City of Tigard	City of Tigard	0.25	Urban
395	Meadowglade	City of Tigard	City of Tigard	4.10	Natural
396	Merestone	City of Tigard	City of Tigard	1.25	Natural
389	Morlan Plumbing	City of Tigard	City of Tigard	0.50	Natural
398	Pathfinder	City of Tigard	City of Tigard	1.80	Natural
400	Rebecca Park	City of Tigard	City of Tigard	0.88	Natural
401	Renaissance Woods	City of Tigard	City of Tigard	2.74	Natural
402	Riverview Estates	City of Tigard	City of Tigard	2.82	Natural
404	Shady Lane	City of Tigard	City of Tigard	1.96	Natural
405	Summer Hills Park	City of Tigard	City of Tigard	4.01	Natural
365	Summerlake Park	City of Tigard	City of Tigard	23.80	Urban
406	Sw 135th and Scholls Ferry	City of Tigard	City of Tigard	5.07	Natural
408	Tigard St Addition	City of Tigard	City of Tigard	3.31	Natural
412	Tualatin Drive	City of Tigard	City of Tigard	0.42	Natural
411	Tualatin River Country Club Tracts	City of Tigard	City of Tigard	0.42	Natural
410	Tualatin River Hickox Property	City of Tigard	City of Tigard	0.09	Natural
413	Windsor Place	City of Tigard	City of Tigard	2.63	Natural

<b>ID</b>	<b>Name</b>	<b>Owner</b>	<b>Operator</b>	<b>Acreage</b>	<b>Park Type</b>
414	Winter Lake Drive	City of Tigard	City of Tigard	3.03	Natural
360	Woodard Park	City of Tigard	City of Tigard	3.26	Urban
362	Ye Old Windmill Park	City of Tigard	City of Tigard	0.15	Specialty
631	Beaver Creek Greenway	City of Troutdale	City of Troutdale	22.80	Natural
625	Depot Park	City of Troutdale	City of Troutdale	2.70	Urban
624	Glen Otto Park	City of Troutdale	City of Troutdale	11.90	Urban
627	Kiku Park	City of Troutdale	City of Troutdale	2.75	Urban
634	Lewellyn Greenway	City of Troutdale	City of Troutdale	4.53	Natural
628	Lewellyn Park	City of Troutdale	City of Troutdale	2.39	Urban
638	Mountain Vista Greenway	City of Troutdale	City of Troutdale	0.22	Natural
635	Sandee Palisades Iv Greenway	City of Troutdale	City of Troutdale	19.03	Natural
636	Strawberry Meadows Greenway	City of Troutdale	City of Troutdale	1.94	Natural
10	Atfalati Park	City of Tualatin	City of Tualatin	13.27	Urban
11	Brown's Ferry Park	City of Tualatin	City of Tualatin	28.33	Natural
12	Ibach Park	City of Tualatin	City of Tualatin	19.40	Urban
19	Jurgens Park	City of Tualatin	City of Tualatin	0.00	Urban
16	Stoneridge Park	City of Tualatin	City of Tualatin	0.00	Urban
18	Tualatin Community Park	City of Tualatin	City of Tualatin	27.11	Urban
3113	Tualatin River Access Points 11.014	City of Tualatin & Metro	City of Tualatin	8.53	Natural
89	Bernert Landing	City of West Linn	City of West Linn	2.25	Specialty
90	Burnside Park	City of West Linn	City of West Linn	13.22	Natural
91	Cedar Island	City of West Linn	City of West Linn	9.10	Specialty
92	Cedaroak Boat Ramp	City of West Linn	City of West Linn	16.90	Specialty
102	Hidden Springs Open Space	City of West Linn	City of West Linn	37.67	Natural
97	Interstate Tractor Open Space	City of West Linn	City of West Linn	10.85	Natural
147	Mark Lane Tot Lot	City of West Linn	City of West Linn	0.10	Urban
143	Marylwood Ct	City of West Linn	City of West Linn	2.00	Natural
94	Renaissance Open Space	City of West Linn	City of West Linn	1.91	Natural
142	River Bluff Open Space	City of West Linn	City of West Linn	1.70	Trail

<b>ID</b>	<b>Name</b>	<b>Owner</b>	<b>Operator</b>	<b>Acreage</b>	<b>Park Type</b>
88	Swift Shore Open Space	City of West Linn	City of West Linn	9.44	Natural
98	Troon Open Space	City of West Linn	City of West Linn	6.16	Natural
85	Tualatin River Open Space	City of West Linn	City of West Linn	13.75	Natural
86	Wilderness Park	City of West Linn	City of West Linn	64.73	Natural
83	Willamette Park	City of West Linn	City of West Linn	19.05	Urban
87	McLean House/Westbridge Open Space	City of West Linn	Friends of the McLean House	7.38	Specialty
117	Boones Ferry Park	City of Wilsonville	City of Wilsonville	6.00	Urban
116	Boones Ferry Park (West)	City of Wilsonville	City of Wilsonville	3.88	Urban
108	Boones Ferry To Memorial Park Trail	City of Wilsonville	City of Wilsonville	0.00	Trail
118	Memorial Park (East)	City of Wilsonville	City of Wilsonville	41.00	Natural
119	Memorial Park (West)	City of Wilsonville	City of Wilsonville	56.84	Urban
113	Merryfield Neighborhood Park	City of Wilsonville	City of Wilsonville	9.00	Natural
109	Montebello Park	City of Wilsonville	City of Wilsonville	0.21	Urban
472	Barton Park	Clackamas County	Clackamas County	113.00	Urban
464	Billy Goat Island	Clackamas County	Clackamas County	20.60	Natural
468	Boones Ferry Marina	Clackamas County	Clackamas County	3.50	Specialty
473	Carver Park	Clackamas County	Clackamas County	9.90	Urban
467	Eagle Fern Park	Clackamas County	Clackamas County	300.00	Natural
466	Feldheimer Road Boat Ramp	Clackamas County	Clackamas County	0.67	Natural
465	Hebb Memorial Park	Clackamas County	Clackamas County	13.00	Natural
469	Metzler Memorial Park	Clackamas County	Clackamas County	138.00	Natural
470	Stonegate	Clackamas County	Clackamas County	165.00	Undeveloped
602	District Park	Clackamas County	NCPRD	85.00	Undeveloped
582	Rivervilla Park	Clackamas County	NCPRD	5.00	Urban
500	Nofziger Property	Metro	City of Hillsboro	21.00	Natural
3044	Forest Park Expansion 6.001	Metro	City of Portland	1.70	Natural
3045	Forest Park Expansion 6.003	Metro	City of Portland	4.75	Natural
3049	Forest Park Expansion 6.007	Metro	City of Portland	3.30	Natural
3055	Forest Park Expansion 6.017	Metro	City of Portland	0.55	Natural

<b>ID</b>	<b>Name</b>	<b>Owner</b>	<b>Operator</b>	<b>Acreage</b>	<b>Park Type</b>
3046	Forest Park Expansion 6.024	Metro	City of Portland	3.08	Natural
3050	Forest Park Expansion 6.027	Metro	City of Portland	4.12	Natural
3053	Forest Park Expansion 6.029	Metro	City of Portland	35.00	Natural
3052	Forest Park Expansion 6.031	Metro	City of Portland	7.52	Natural
3051	Forest Park Expansion 6.033	Metro	City of Portland	3.10	Natural
3058	Forest Park Expansion 6.041	Metro	City of Portland	1.59	Natural
3056	Forest Park Expansion 6.044	Metro	City of Portland	0.71	Natural
3057	Forest Park Expansion 6.046	Metro	City of Portland	51.71	Natural
3122	OMSI To Springwater Corridor Trail	Metro	City of Portland	44.23	Trail
3136	Tryon Creek	Metro	City of Portland	2.07	Natural
3103	Tryon Creek Linkages 14.001	Metro	City of Portland	11.00	Natural
3104	Tryon Creek Linkages 14.002	Metro	City of Portland	9.60	Natural
3106	Tryon Creek Linkages 14.005	Metro	City of Portland	0.17	Natural
3129	Whitaker Ponds 20.001	Metro	City of Portland	5.07	Natural
3131	Whitaker Ponds 27.002	Metro	City of Portland	0.60	Natural
3132	Whitaker Ponds 27.003	Metro	City of Portland	0.60	Natural
3133	Whitaker Ponds 27.004	Metro	City of Portland	0.60	Natural
3135	Whitaker Ponds 27.008	Metro	City of Portland	2.10	Natural
3134	Whitaker Ponds 27.009	Metro	City of Portland	4.81	Natural
3047	Forest Park Expansion 6.023	Metro	City of Portland & Metro	31.41	Natural
394	Lowery	Metro	City of Tigard	6.80	Natural
3000	Beaver Creek 19.005 (Easement)	Metro	Metro	30.00	Natural
3202	Beggars-Tick Wildlife Refuge	Metro	Metro	20.50	Natural
702	Bell View Point	Metro	Metro	10.00	Natural
523	Blue Lake Park	Metro	Metro	185.00	Urban
3114	Canemah Bluff 21.001	Metro	Metro	22.48	Natural
3115	Canemah Bluff 21.003	Metro	Metro	39.00	Natural
3116	Canemah Bluff 21.011	Metro	Metro	0.23	Natural
3117	Canemah Bluff 21.012	Metro	Metro	0.25	Natural



<b>ID</b>	<b>Name</b>	<b>Owner</b>	<b>Operator</b>	<b>Acreage</b>	<b>Park Type</b>
3203	Chinook Landing Marine Park	Metro	Metro	67.00	Specialty
3001	Clackamas River Greenway 18.003	Metro	Metro	46.00	Natural
3002	Clackamas River Greenway 18.014	Metro	Metro	51.50	Natural
3003	Clear Creek Canyon 12.001	Metro	Metro	342.02	Natural
3004	Clear Creek Canyon 12.003	Metro	Metro	32.00	Natural
3005	Clear Creek Canyon 12.006	Metro	Metro	18.92	Natural
3006	Columbia River Shoreline 10.001	Metro	Metro	219.41	Natural
3007	Cooper Mountain 5.001	Metro	Metro	121.50	Natural
3009	Cooper Mountain 5.010	Metro	Metro	24.58	Natural
3013	Cooper Mountain 5.013	Metro	Metro	6.80	Natural
3008	Cooper Mountain 5.014	Metro	Metro	30.00	Natural
3011	Cooper Mountain 5.018	Metro	Metro	7.50	Natural
3010	Cooper Mountain 5.019	Metro	Metro	19.82	Natural
3015	East Buttes/Boring Lava Domes 2.005	Metro	Metro	43.00	Natural
3016	East Buttes/Boring Lava Domes 2.006	Metro	Metro	5.00	Natural
3017	East Buttes/Boring Lava Domes 2.007	Metro	Metro	5.00	Natural
3018	East Buttes/Boring Lava Domes 2.008	Metro	Metro	5.00	Natural
3024	East Buttes/Boring Lava Domes 2.013	Metro	Metro	51.10	Natural
3036	East Buttes/Boring Lava Domes 2.042	Metro	Metro	59.54	Natural
3026	East Buttes/Boring Lava Domes 2.055	Metro	Metro	73.00	Natural
3023	East Buttes/Boring Lava Domes 2.056	Metro	Metro	2.50	Natural
3037	East Buttes/Boring Lava Domes 2.057	Metro	Metro	3.29	Natural
3033	East Buttes/Boring Lava Domes 2.062	Metro	Metro	2.64	Natural
3032	East Buttes/Boring Lava Domes 2.064	Metro	Metro	5.01	Natural
3034	East Buttes/Boring Lava Domes 2.065	Metro	Metro	5.12	Natural
3043	Forest Park Expansion 6.002	Metro	Metro	115.00	Natural
3048	Forest Park Expansion 6.008	Metro	Metro	152.05	Natural
3054	Forest Park Expansion 6.013	Metro	Metro	1.13	Natural
3059	Gales Creek 9.001	Metro	Metro	43.11	Natural

<b>ID</b>	<b>Name</b>	<b>Owner</b>	<b>Operator</b>	<b>Acreage</b>	<b>Park Type</b>
3062	Gales Creek 9.003	Metro	Metro	112.50	Natural
3060	Gales Creek 9.005	Metro	Metro	51.00	Natural
3061	Gales Creek 9.013	Metro	Metro	4.00	Natural
3064	Gales Creek 9.016	Metro	Metro	45.00	Natural
3065	Gales Creek 9.020	Metro	Metro	1.80	Natural
3214	Gary & Flagg Islands	Metro	Metro	132.00	Natural
3210	Indian John Island	Metro	Metro	64.00	Natural
3209	Larch Mountain Corridor	Metro	Metro	185.00	Natural
3215	Mason Hill Park	Metro	Metro	3.00	Natural
3118	Multnomah Channel 23.001	Metro	Metro	148.00	Natural
3119	Multnomah Channel 23.002	Metro	Metro	116.00	Natural
3120	Multnomah Channel 23.005	Metro	Metro	45.00	Natural
3121	Multnomah Channel 23.006	Metro	Metro	16.64	Natural
3213	Multnomah Channel Property	Metro	Metro	11.00	Natural
3067	Newell Creek Canyon 3.002	Metro	Metro	45.00	Natural
3068	Newell Creek Canyon 3.003	Metro	Metro	10.47	Natural
3066	Newell Creek Canyon 3.004	Metro	Metro	9.16	Natural
3080	Newell Creek Canyon 3.006	Metro	Metro	1.15	Natural
3076	Newell Creek Canyon 3.007	Metro	Metro	4.70	Natural
3071	Newell Creek Canyon 3.009	Metro	Metro	3.50	Natural
3081	Newell Creek Canyon 3.016	Metro	Metro	8.80	Natural
3079	Newell Creek Canyon 3.019	Metro	Metro	2.85	Natural
3070	Newell Creek Canyon 3.020	Metro	Metro	3.96	Natural
3075	Newell Creek Canyon 3.023	Metro	Metro	5.00	Natural
3074	Newell Creek Canyon 3.025	Metro	Metro	8.72	Natural
3072	Newell Creek Canyon 3.026	Metro	Metro	8.40	Natural
3073	Newell Creek Canyon 3.027	Metro	Metro	13.49	Natural
3077	Newell Creek Canyon 3.028	Metro	Metro	6.11	Natural
3069	Newell Creek Canyon 3.038	Metro	Metro	1.38	Natural

<b>ID</b>	<b>Name</b>	<b>Owner</b>	<b>Operator</b>	<b>Acreage</b>	<b>Park Type</b>
3078	Newell Creek Canyon 3.044	Metro	Metro	2.90	Natural
3208	Oregon Zoo	Metro	Metro	64.00	Specialty
3221	Oxbow - Sandy River Access Site 1	Metro	Metro	0.00	Natural
3220	Oxbow - Sandy River Access Site 2	Metro	Metro	0.00	Natural
3222	Oxbow - Sandy River Access Site 3	Metro	Metro	0.00	Natural
3223	Oxbow - Sandy River Access Site 4	Metro	Metro	4.26	Natural
3224	Oxbow - Sandy River Access Site 5	Metro	Metro	0.74	Natural
3212	Phillipi Property	Metro	Metro	6.38	Natural
3089	Rock Creek 13.001	Metro	Metro	31.10	Natural
3091	Sandy River Gorge 4.001	Metro	Metro	39.85	Natural
3090	Sandy River Gorge 4.002	Metro	Metro	158.11	Natural
3092	Sandy River Gorge 4.003	Metro	Metro	160.00	Natural
3094	Sandy River Gorge 4.012	Metro	Metro	57.10	Natural
3093	Sandy River Gorge 4.013	Metro	Metro	20.59	Natural
3097	Sandy River Gorge 4.017	Metro	Metro	236.63	Natural
3096	Sandy River Gorge 4.020	Metro	Metro	18.77	Natural
3098	Sandy River Gorge 410	Metro	Metro	40.00	Natural
3099	Tonquin Geologic Area 20.003	Metro	Metro	57.68	Natural
3102	Tonquin Geologic Area 8.002	Metro	Metro	27.30	Natural
3100	Tonquin Geologic Area 8.006	Metro	Metro	22.05	Natural
3101	Tonquin Geologic Area 8.014	Metro	Metro	28.19	Natural
3107	Tryon Creek Linkages 14.003	Metro	Metro	8.53	Natural
3109	Tualatin River Access Points 11.001	Metro	Metro	147.81	Natural
3110	Tualatin River Access Points 11.002	Metro	Metro	6.19	Natural
3108	Tualatin River Access Points 11.003	Metro	Metro	114.00	Natural
3111	Tualatin River Access Points 11.004	Metro	Metro	6.25	Natural
3112	Tualatin River Access Points 11.007	Metro	Metro	5.85	Natural
3123	Willamette Cove 20.005	Metro	Metro	27.00	Natural
3128	Willamette Narrows 22.003	Metro	Metro	49.30	Natural

<b>ID</b>	<b>Name</b>	<b>Owner</b>	<b>Operator</b>	<b>Acreage</b>	<b>Park Type</b>
3124	Willamette Narrows 22.005	Metro	Metro	20.89	Natural
3126	Willamette Narrows 22.006	Metro	Metro	29.30	Natural
3125	Willamette Narrows 22.008	Metro	Metro	20.16	Natural
3127	Willamette Narrows 22.009	Metro	Metro	20.00	Natural
3095	Sandy River Gorge 4.019	Metro	State of Oregon	4.70	Natural
3200	Oxbow Regional Park	Metro & BLM & ODFW	Metro	1040.00	Natural
6008	Ash Creek Headwaters	Metro & City of Portland	City of Portland	0.86	Natural
3031	East Buttes/Boring Lava Domes 2.021	Metro & City of Portland	City of Portland	15.45	Natural
3019	East Buttes/Boring Lava Domes 2.024	Metro & City of Portland	City of Portland	3.00	Natural
6068	Fanno Creek Natural Area	Metro & City of Portland	City of Portland	1.95	Natural
6116	Jensen Property	Metro & City of Portland	City of Portland	2.24	Natural
3130	Marquam Woods 20.004	Metro & City of Portland	City of Portland	18.80	Natural
3137	Tryon Creek 27.013	Metro & City of Portland	City of Portland	0.69	Natural
557	Smith and Bybee Lakes Wildlife Area	Metro & Port of Portland & Twc	Metro	2000.00	Natural
606	Ann-Toni Schreiber Park	NCPRD	NCPRD	6.72	Urban
3028	East Buttes/Boring Lava Domes 2.046	NCPRD	NCPRD	1.32	Natural
584	Heddie Notz Park	NCPRD	NCPRD	2.64	Urban
597	Highland Summit	NCPRD	NCPRD	3.90	Natural
611	Mill Park	NCPRD	NCPRD	1.00	Urban
601	North Clackamas Aquatic Park	NCPRD	NCPRD	0.00	Specialty
583	Southern Lites Park	NCPRD	NCPRD	3.50	Urban
610	Unnamed Neighborhood Park	NCPRD	NCPRD	1.00	Urban
591	Willamette Dr	NCPRD	NCPRD	0.60	Natural
599	Mt Talbert	NCPRD & Metro	NCPRD	114.00	Natural
3216	Burlington Boat Ramp/Mult Channel	ODFW	Metro	6.18	Specialty
705	Sandy River - Blue Hole Access	ODFW	ODFW	80.00	Natural
561	Sandy River - Cedar Creek Access	ODFW	ODFW	225.00	Natural
562	Sandy River - Davis Access	ODFW	ODFW	1.30	Natural
530	Sauvie Island Wildlife Area	ODFW	ODFW	12000.00	Natural

<b>ID</b>	<b>Name</b>	<b>Owner</b>	<b>Operator</b>	<b>Acreage</b>	<b>Park Type</b>
526	McCarthy Park	Port of Portland	Port of Portland	0.00	Trail
527	Portland Interntnl Ctr 40 Mile Loop	Port of Portland	Port of Portland	0.00	Trail
524	Government Island	Port of Portland	State of Oregon	2200.00	Natural
525	Lemon Island McGuire Island	Port of Portland	State of Oregon	265.00	Natural
703	Bluff Above Swan Island	Port of Portland & City of Portland	Port of Portland	91.83	
430	Faraday Lake	Portland General Electric	Portland General Electric	10.00	Specialty
429	River Mill Park	Portland General Electric	Portland General Electric	7.00	Specialty
428	Roslyn Lake Park	Portland General Electric	Portland General Electric	35.00	Specialty
6221	Reed Community Garden	Reed College	City of Portland	1.90	Specialty
8055	Bonnie Lure State Park	State of Oregon	State of Oregon	83.58	
139	Coalca Landing	State of Oregon	State of Oregon	15.13	Natural
520	Dabney State Park	State of Oregon	State of Oregon	135.00	Natural
518	Fish Eddy	State of Oregon	State of Oregon	76.85	Natural
133	Lang Property	State of Oregon	State of Oregon	7.30	Natural
519	Lewis and Clark State Park	State of Oregon	State of Oregon	56.00	Natural
140	Mary S Young State Park	State of Oregon	State of Oregon	137.60	Urban
8054	McIver State Park	State of Oregon	State of Oregon	968.38	
136	Molalla River State Park	State of Oregon	State of Oregon	566.28	Natural
135	Oswego Outlet	State of Oregon	State of Oregon	0.65	Natural
132	Peach Cove	State of Oregon	State of Oregon	5.20	Natural
131	Peach Cove Landing	State of Oregon	State of Oregon	4.20	Natural
130	Pete's Mountain Landing	State of Oregon	State of Oregon	10.72	Natural
134	Rock Island Landing	State of Oregon	State of Oregon	95.50	Natural
137	Tryon Creek State Natural Area	State of Oregon	State of Oregon	645.00	Natural
138	Wapato Access	State of Oregon	State of Oregon	183.54	Natural
706	Sandy River - Blue Hole Tract	The Nature Conservancy	ODFW	25.84	Natural
75	Camassia Natural Area	The Nature Conservancy	The Nature Conservancy	27.00	Natural
78	Keller Woodland	The Nature Conservancy	The Nature Conservancy	39.50	Natural
76	Sandy River Gorge: Partridge Tract	The Nature Conservancy	The Nature Conservancy	500.00	Natural

<b>ID</b>	<b>Name</b>	<b>Owner</b>	<b>Operator</b>	<b>Acreage</b>	<b>Park Type</b>
77	Sandy River: Diack Tract	The Nature Conservancy	The Nature Conservancy	170.00	Natural
419	Apache Bluff	The Wetlands Conservancy	The Wetlands Conservancy	5.94	Natural
423	Cedar Mills	The Wetlands Conservancy	The Wetlands Conservancy	11.00	Natural
420	Coffee Lake	The Wetlands Conservancy	The Wetlands Conservancy	28.00	Natural
427	Hedges Creek Marsh	The Wetlands Conservancy	The Wetlands Conservancy	20.00	Natural
421	Knez Wetland	The Wetlands Conservancy	The Wetlands Conservancy	2.00	Natural
425	Minthorn Springs	The Wetlands Conservancy	The Wetlands Conservancy	6.70	Natural
418	Nyberg Creek	The Wetlands Conservancy	The Wetlands Conservancy	13.00	Natural
426	Pascuzzi Pond	The Wetlands Conservancy	The Wetlands Conservancy	11.60	Natural
424	Windsor Place	The Wetlands Conservancy	The Wetlands Conservancy	2.00	Natural
5004	Alohawood Park	THPRD	THPRD	1.19	Natural
5005	Apollo Ridge Park	THPRD	THPRD	2.09	Natural
5008	Aspen Crest Park	THPRD	THPRD	1.57	Natural
5013	Bauman Park	THPRD	THPRD	0.73	Natural
5015	Beaverton Creek Wetlands Park	THPRD	THPRD	14.76	Natural
5074	Ben Graf Meadows Park	THPRD	THPRD	1.52	Natural
5018	Bethany Lake Park	THPRD	THPRD	1.04	Natural
5019	Bethany Meadows Park	THPRD	THPRD	14.69	Natural
5021	Bethany Wetlands Park	THPRD	THPRD	2.42	Natural
5022	Bluegrass Downs Park	THPRD	THPRD	0.48	Natural
5024	Bronson Creek Park	THPRD	THPRD	5.31	Natural
5025	Brookhaven Park	THPRD	THPRD	2.99	Natural
5026	Brookview Park	THPRD	THPRD	0.31	Natural
5029	Burntwood Powerline Park	THPRD	THPRD	0.02	Natural
5034	Ce Mason Wetlands Park	THPRD	THPRD	0.39	Natural
5041	Cedar Mill Woods Park	THPRD	THPRD	1.10	Natural
5045	Chantal Village Park	THPRD	THPRD	15.37	Natural
5048	Commonwealth Lake Park	THPRD	THPRD	0.02	Urban
5053	Crystal Creek Park	THPRD	THPRD	0.08	Natural

<b>ID</b>	<b>Name</b>	<b>Owner</b>	<b>Operator</b>	<b>Acreage</b>	<b>Park Type</b>
5056	Deerfield Park	THPRD	THPRD	4.53	Natural
5061	Emerald Estates Park	THPRD	THPRD	4.05	Natural
5062	Fanno Creek Park	THPRD	THPRD	2.00	Natural
5063	Fanno Farmhouse	THPRD	THPRD	1.00	Specialty
5077	Greenway Park	THPRD	THPRD	19.34	Urban
5080	Hart Meadows Park	THPRD	THPRD	2.67	Natural
5083	Hideaway Park	THPRD	THPRD	3.40	Urban
5085	Hiteon Meadows Park	THPRD	THPRD	6.10	Natural
5035	Hubert Cain Park	THPRD	THPRD	0.40	Natural
5091	Jordan Park	THPRD	THPRD	7.18	Natural
5092	Kaiser Ridge Park	THPRD	THPRD	1.13	Natural
5093	Koll Center Wetlands Park	THPRD	THPRD	12.78	Natural
5095	Lexington Park	THPRD	THPRD	4.22	Natural
5098	Lowami Hart Woods Park	THPRD	THPRD	9.61	Natural
5099	Madrona Heights Park	THPRD	THPRD	5.08	Natural
5104	Meadowbrook Park	THPRD	THPRD	4.30	Natural
5110	Morgan's Run Park	THPRD	THPRD	2.37	Urban
5112	Moshofsky Woods Park	THPRD	THPRD	1.37	Natural
5115	Murrayhill Powerline Park	THPRD	THPRD	0.11	Natural
5118	Northshore Estates Park	THPRD	THPRD	2.65	Natural
5119	Oregon Electric Right of Way Path	THPRD	THPRD	0.75	Trail
5125	Peppertree Park	THPRD	THPRD	0.34	Natural
5126	Pheasant Park	THPRD	THPRD	0.79	Natural
8050	Rock Creek Open Space Park	THPRD	THPRD	0.00	Natural
5139	Rock Creek Park	THPRD	THPRD	2.76	Urban
5145	Salix Park	THPRD	THPRD	3.89	Natural
5150	Seminole Park	THPRD	THPRD	2.00	Natural
5154	Shadow Creek Park	THPRD	THPRD	1.50	Natural
5158	Springville Meadows Park	THPRD	THPRD	12.60	Natural

<b>ID</b>	<b>Name</b>	<b>Owner</b>	<b>Operator</b>	<b>Acreage</b>	<b>Park Type</b>
5159	Spruce Woods Park	THPRD	THPRD	0.02	Natural
5160	Spyglass Park	THPRD	THPRD	3.01	Natural
5163	Stonegate Phase Iii Park	THPRD	THPRD	2.06	Natural
5164	Stonemist Park	THPRD	THPRD	2.41	Natural
5166	Summercrest Park	THPRD	THPRD	1.40	Urban
5167	Summercrest West Park	THPRD	THPRD	0.45	Natural
5170	Sutherland Meadows Park	THPRD	THPRD	3.92	Natural
5176	Thornbrook Park	THPRD	THPRD	2.46	Natural
5177	Tokola Wetlands Park	THPRD	THPRD	4.07	Natural
5180	Tualatin Hills Nature Park	THPRD	THPRD	194.67	Specialty
5182	Vale Park	THPRD	THPRD	0.05	Natural
5185	Vendla Park	THPRD	THPRD	2.09	Natural
5186	Vista Brook Park	THPRD	THPRD	1.75	Urban
5124	Wanda Peck Memorial Park	THPRD	THPRD	1.85	Urban
5195	Whispering Woods Park	THPRD	THPRD	1.68	Natural
5196	White Fox Park	THPRD	THPRD	1.06	Natural
5200	Willow Creek Nature Park	THPRD	THPRD	5.87	Natural
5201	Willow Creek Park	THPRD	THPRD	2.70	Natural
5203	Winthrop Park	THPRD	THPRD	1.90	Natural
5111	Morrison Woods Park	THPRD & Metro	THPRD	2.65	Natural
441	Forest Grove West Zurcher Property	Unified Sewerage Agency	Unified Sewerage Agency	362.00	Natural
446	Wetlands At Durham Wastewater	Unified Sewerage Agency	Unified Sewerage Agency	30.00	Natural
442	Wetlands At Forest Grove Wastewater	Unified Sewerage Agency	Unified Sewerage Agency	243.00	Natural
445	Wetlands At Rock Creek Wastewater	Unified Sewerage Agency	Unified Sewerage Agency	30.00	Natural
416	Scoggins Valley Park/Hagg Lake	Us Dept of the Interior	Washington County	2600.00	Natural
123	Tualatin River Ntnl Wildlife Refuge	US Fish and Wildlife Service	US Fish and Wildlife Service	805.00	Natural
5006	Arleda Park	Washington County	THPRD	1.02	Natural
5068	George Foegue Park	Washington County	THPRD	2.31	Urban
417	Metzger Park	Washington County	Washington County	7.00	Urban



9-11 GTAC

GREENSPACES TECHNICAL ADVISORY COMMITTEE

*please sign in...*

name	organization
BOSAK	TAPRD
Virginia Bowers	3 Rivers Land Conserv.
Del Craig	ORE City
Paul Hennen	Tualatin
Jack Wiles	OPRD
Scott Talbot	Hillsboro
Barbara Feyer	City of Beaverton
Melissa Gall	Wash. Co.

9-11 GTAC

GREENSPACES TECHNICAL ADVISORY COMMITTEE

*please sign in...*

name	organization
Mike Houck	
Deb Lev	
Lisa H	
Courtney Dulce	
Chris Neamtzu	
Jennifer Thompson	
Jayne Cronlund	
Mary Cook Swanson	



October 2001

GREENSPACES TECHNICAL ADVISORY COMMITTEE

*please sign in . . .*

name	organization
Donna Stuber	Friends of Westside Trails
Ric Catron	Gresham P&R
Mary Swanson	Clackamas County -
Boo Bothman	
Don Brash	
Chris Wayland	Washington County -
Duane Roberts	Tigard
Paul Hennen	Tigard

Ken Helmer

Metro

October 2001

GREENSPACES TECHNICAL ADVISORY COMMITTEE

*please sign in...*

name	organization
Amanda Frit 406 SW Vacuna St Portland OR 97219	Tryon Creek Watershed Council
BOSAK	THPRD
PAUL CATHCART	CITY OF WILSONVILLE
Barbara Warner	40 mile loop
Joanne Rice	Wash. Co. Planning Division
Jim Sjolin	Portland Parks
Dawn Hartman	THPRD
Virginia Bowers	3 Rivers

Paul Ketchum

Metro

(If you didn't sign in on your way in)  
OCTOBER 2001  
GREENSPACES TECHNICAL ADVISORY COMMITTEE

*please sign in...*

name	organization
Galene Lantz	City of Troutdale
Jennifer Thompson	U.S. FWS
Scott Talbot	City of Hillsboro

Sept. 12 trials

GREENSPACES TECHNICAL ADVISORY COMMITTEE

*please sign in...*

name	organization
Barbara Feyer	City of Beaverton
Jim Sjulin	PORTLAND PARKS & RECREATION
Deane Roberts	Tigard
Greg Seward	Portland Parks
Kelly Putney	Vanover & Clark Co
Al Schaefer	WASHINGTON COUNTY

Sept 12 Trails

GREENSPACES TECHNICAL ADVISORY COMMITTEE

*please sign in...*

name	organization
Carolyn Sharp	THPRD
Dawn Hartman	THPRD
Karen Buehrig	Clackamas County Planning
Michelle Healy	North Clackamas Parks & Rec District
Scott Talbot	City of Hillsboro
Bob Bottoman	40-Mile
Donna Stecker	Friends of Westside Trails
Don Brink	SUTRA 143

David Bragdon  
Paul Schreier

Metra Council PO  
WASHINGTON COUNTY



Sept 12 Trails

GREENSPACES TECHNICAL ADVISORY COMMITTEE

*please sign in...*

name	organization
Mike Hunk	Amalaban
Jay Meley	LWV
Mary Swanson	Clackamas County
John Lantz	City of Troutdale
Bill Barber	metro Planning
Lisa Hammerback	Lake Oswego
Dee Chang	OC Parks & Rec
Courtney Dike	plot