

Coordinated by:

**Smith & Bybee Lakes Wildlife Area
 Management Committee**
Nancy Hendrickson, Chair



Metro
 600 NE Grand Ave.
 Portland, OR 97232
 (503) 797-1870

**METRO
 Smith & Bybee Lakes Management Committee Meeting**

5:30 p.m. - 7:00 p.m., Tuesday, January 23, 2001
 Metro Regional Center, Room 270
 600 N E Grand Ave.
 Portland, Oregon 97232

AGENDA

Arrive, mingle /15 min.	5:15 - 5:30 pm
Introductions, Review and approve December meeting notes	/10 min. 5:30 - 5:40 pm
Presentation: Environmental education program (James Davis)	/30 min. 5:40 - 6:10 pm
Discussion: Model airplane club's use of landfill (Nancy Hendrickson, Elaine Stewart)	/20 min. 6:10 - 6:30 pm
Updates: Trail IGA (Jim Sjulín) Jones v. Thorne consent decree (Stewart) Parking lot gate & North Marine Drive project (Stewart) Others	/20 min. 6:30 - 6:50 pm
Set February 6, 2001 agenda	/10 min. 6:50 - 7:00 pm

Enclosures:
 December Meeting Notes

Smith & Bybee Lakes Management Committee Summary Meeting Notes

Smith & Bybee Lakes Wildlife Area
January 23, 2001
5:30 PM

In Attendance:

Nancy Hendrickson *	City of Portland, BES
Jim Morgan *	Representing Metro Exec Officer
Denise Rennis *	Port of Portland
Patt Opdyke *	North Portland Neighborhoods
Jim Sjulín *	City of Portland Parks
Patricia Sullivan	Metro Parks & Greenspaces
Elaine Stewart	Metro Wildlife Area Mgr
Dennis O'Neil	Metro Regional Environmental Management
James Davis	Metro S & B Lakes Wildlife Area Naturalist
Gregg Everhart	City of Portland Parks
Pam Arden *	40 Mile Loop Trust
Gerry Meyer	Port of Portland

* - voting member

Presentation: Environmental Education Program - James Davis

James Davis, Metro's naturalist for the Smith & Bybee Lakes Wildlife Area, spoke of accomplishments and challenges for the environmental education program at the site. He provided an overview of field trips, bird watching excursions, turtle walks and Smith & Bybee Lakes Day. Classes are also taught by Davis weekday evenings at Metro primarily to develop basic bird watching skills. A bird walk at the lakes follows within two weeks of the class. This provides an introduction to the wildlife area for people who might otherwise not be exposed to it. Attendance at these programs has increased dramatically in the past few years. The number of programs has increased by 56%, the number of people by 33% and the contact hours by 136% since fiscal year 1996-97.

One of the biggest challenges confronting the environmental education program at the wildlife area, according to Davis, is that it is unknown to most residents of the Portland area, even many of those in the North Portland area. Teachers are no exception. For educators who are aware of the lakes' presence, field trips are often cost prohibitive, primarily the cost for transportation to the site. Many teachers who responded to flyers provided by Davis to the Portland Public School District expressed enthusiasm about the program but were not able to take advantage of it due to the lack of transportation or the means to provide it.

A discussion ensued on potential funding sources for transportation for school field trips. *Patt Opdyke made a motion to form a task group which will develop ideas for providing financial support for the environmental education program (at the Smith & Bybee Lakes Wildlife Area), specifically the transportation component.* The motion passed by a unanimous vote. Opdyke volunteered to head up the group, if the task load could be shared. Others offering to participate included Pam Arden, and as resources, Jim Sjulín and Jim Morgan. Although no representative from the Friends of Smith & Bybee Lakes was present at this meeting, it was thought their input would be helpful. There was a consensus that task group "meetings" could take place via e-mail and any progress made could be shared with the Management Committee by the same method. Patricia Sullivan will provide Opdyke with necessary e-mail addresses and contact information on the North Portland Enhancement Grant Program.

Discussion: Model Airplane Club's Use of Landfill - Nancy Hendrickson, Elaine Stewart

Hendrickson and Stewart spoke of their perceptions of the model airplane club site in Camas, Washington that the sub-committee had visited on Sept. 6. That site consisted of a mown runway with

a fabric cover. Questions as to wildlife response to the radio-controlled planes were difficult to answer with certainty because of the limited amount of time for observation. Opdyke expressed a concern about species of birds that may be newly attracted to the area because of enhancement and restoration efforts and then frightened away by the model airplanes. (landfill)

Dennis O'Neil of REM updated the committee on the Special Use Permit (SUP) application submitted by the club.

- Insurance requirements must still be met, including the addition of Metro as an insured.
- Fire insurance coverage needs to be obtained for such concerns as the methane gas wells on the landfill.
- Some Improvements would be required including covers for the wells.
- Details of payment by the club must be worked out; rental fees may be collected.
- The permit could be considered for approval on a yearly basis.
- The club is requesting hours of operation of 8:00 a.m. to 8:00 p.m. seven days a week.
- O'Neil alluded to the possibility of a key card system being installed in answer to security issues.

The model airplane club sub-committee may be reconvened to consider such issues as potential neighbor complaints and conditions that may be attached to the SUP prior to approval.

Updates

Trail IGA - Jim Sjulin

Sjulin reported the City of Portland and Metro are working together on the IGA, which Stewart is re-drafting. A consultant will be hired to create a master plan for the alignment of the 40-mile loop trail through the wildlife area. Sjulin reminded the committee that funding for the project is from Portland Parks local share funds, which must be spent by December 31, 2001.

Jones v. Thorne Consent Decree - Elaine Stewart

The decree is currently on the desk of the federal judge assigned to the case for signature. The Port of Portland, according to Gerry Meyer, has 120 days to do the design work involved and eighteen months to remove the fill. Revegetation of the area will begin following that procedure. The mitigation involves a total of 37 acres.

Parking Lot Gate & North Marine Drive Project- Stewart

In answer to a question raised at the December meeting, Stewart informed the committee that PDOT is not responsible for providing the gate in question.

Other

- Stewart reported on a volunteer work party of eight which removed a prodigious amount of blackberries at the lakes January 6. It is expected that the number of volunteer groups and hours will increase as spring approaches.
- Biological controls are proving effective on the purple loosestrife. The graduate student involved in the project will be invited to make a presentation at a future management committee meeting.
- O'Neil distributed a report from the Watershed Revegetation Program (WRP) on the landfill which included a list of recommended treatments.

December meeting notes were reviewed and approved.

February agenda

PDOT and CH2M Hill on the Lombard Overpass, O'Neil & George Kral on revegetation at the landfill.

Rescheduled

Percent for Art Public Workshop

Multnomah County Wapato Corrections Facility

Please come share your ideas and suggestions for public art projects in the community.

When

Wednesday, January 31, 2001

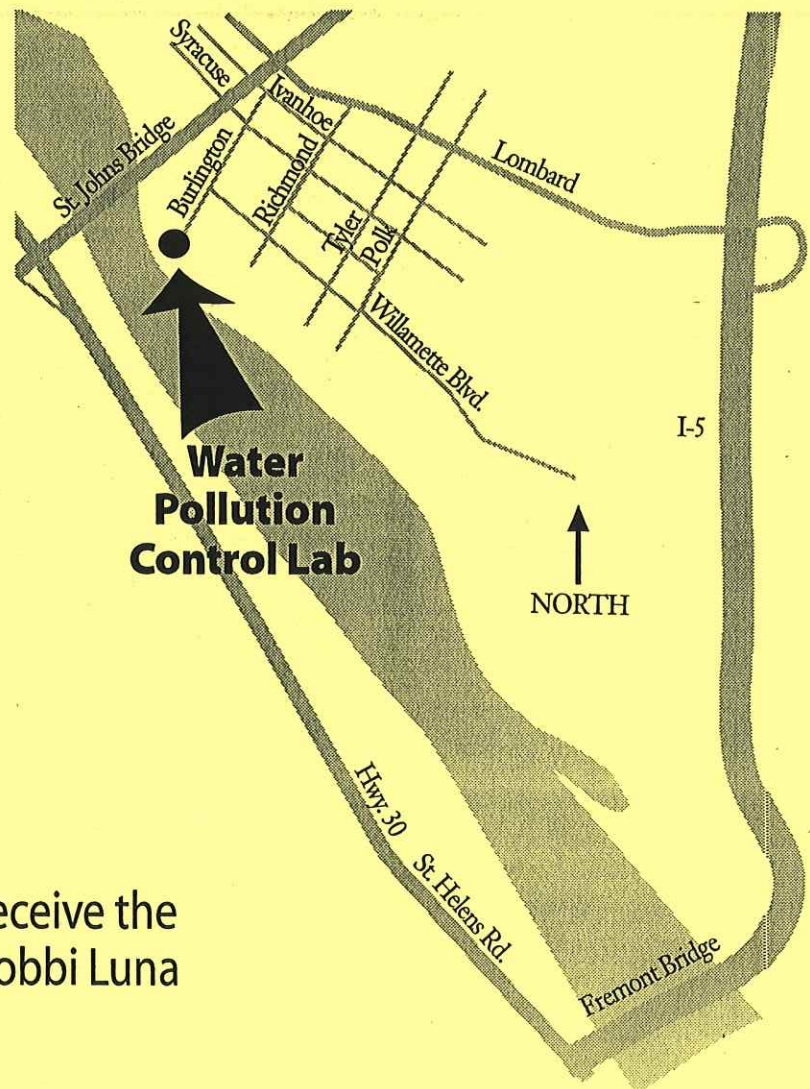
Starting at 7:00 pm

Where

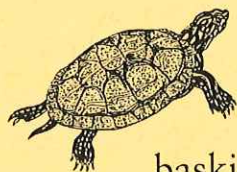
Water Pollution Control Lab
6543 N. Burlington Avenue
Portland

The public meeting room is fully accessible.

For more information, or to receive the project newsletter, call Cpt. Bobbi Luna at (503) 988-3282.



Teachers, bring your class to



See painted turtles

basking in the sun.

Watch osprey hunting

for fish. Touch where



beavers have chewed through a tree trunk. Catch

waterboatmen, dragonfly nymphs, leeches and



sideswimmers. Hear wrens, robins, chickadees and

sparrows singing to announce their territories. Smell the

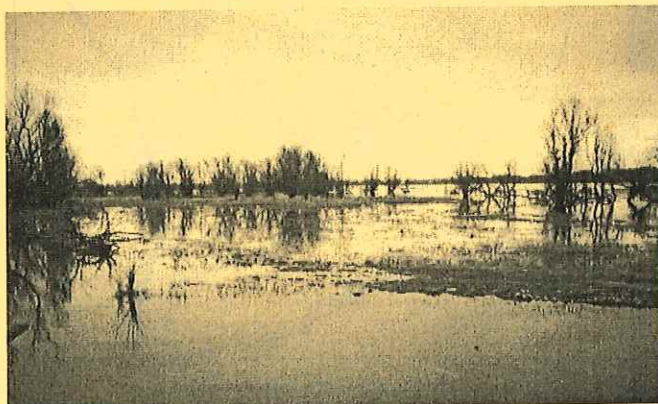
sweet scent of cottonwood buds opening in the spring.

Find coyote scat full of fur and bones.



METRO
Regional Services
*Creating livable
communities*

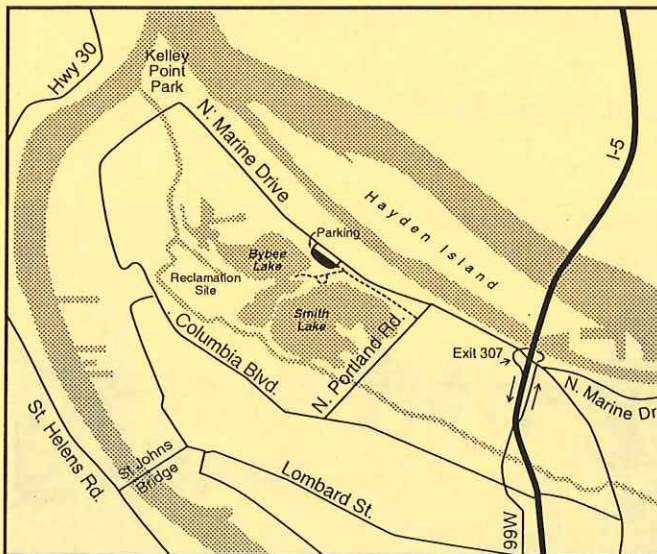
**Experience all this and
more on a class field
trip to Smith and Bybee
Lakes Wildlife Area.**



One of Metro's regional parks, Smith and Bybee Lakes Wildlife Area is a 2,000-acre wetland in North Portland. The area, which consists of lakes, meadows, riparian forest and shoreline habitats, is home to hundreds of different animals.

Metro's professional naturalist and trained volunteers guide environmental education activities. We provide a handout that clearly outlines how our programs align with state benchmarks.

Field trips are available by reservation on most school days in April, May, June, September and October. Reservations should be made one or two months in advance. One or two classrooms a day can be accommodated at a cost of \$2 per student. Program length varies between two and four hours depending on grade level, number of students and program goals. Our active and engaging field trip programs are popular with elementary classes but can be customized for all grade levels.



Smith and Bybee Lakes Wildlife Area

Information and reservations

For field trip information and reservations, call James Davis, Metro naturalist, at (503) 797-1901 or send e-mail to him at davisj@metro.dst.or.us



American goldfinch • bald eagle • beaver • belted kingfisher • big brown bat • blackberry • black-capped chickadee • blacktail deer • bullfrog • Bullock's oriole • Canada goose • coot • cottontail rabbit • cottonwood • coyote • creek dogwood • deer mouse • downy woodpecker • dragonfly • duckweed • garden spider • garter snake • giant water bug • great blue heron • great horned owl • house finch • jewelweed • long-toed salamander • mallard • millipede • mink • mosquitofish • muskrat • nutria • Oregon ash • osprey • Pacific treefrog • painted turtle • raccoon • red-tailed hawk • red-winged blackbird • river otter • robin • scrub jay • snowberry • song sparrow • spittlebug • stinging nettles • swallowtail butterfly • Townsend's mole • tree swallow • varied thrush • water fern • willow • wood duck • yellow warbler

Metro - Planning that protects the nature of our region

Metro serves 1.3 million people who live in Clackamas, Multnomah and Washington counties and the 24 cities in the Portland metropolitan area. Metro provides transportation, land-use and greenspaces planning services and oversees regional garbage disposal and recycling and waste reduction programs.

Metro manages regional parks and greenspaces and the Oregon Zoo. It also oversees operation of the Oregon Convention Center, Civic Stadium, the Portland Center for the Performing Arts and the Portland Metropolitan Exposition (Expo) Center, all managed by the Metropolitan Exposition-Recreation Commission.

For more information about Metro or to schedule a speaker for a community group, call (503) 797-1510 (public affairs) or (503) 797-1540 (council).

Metro's web site: www.metro-region.org

Executive Office - Mike Burton; Auditor - Alexis Dow, CPA; Metro Council: Rod Park, District 1; Bill Atherton, District 2; Jon Kvistad, District 3; Susan McLain, District 4; Ed Washington, District 5; Rod Monroe, District 6; and David Bragdon, District 7.

Smith and Bybee Lakes Wildlife Area Educational Programs

Programs at Smith and Bybee Lakes

School Field Trips

- School classes coming to S & B for a class field trip
- Students, teachers, and parents
- Available year-round but mainly done in Sept., Oct., April, May, June.
- Fee
- Staffed by James and volunteer naturalists
- About 25 programs per school year
- Topics are wildlife watching and tracking and wetland ecology

Youth Group Field Trips

- ✖ Scouts, campfire, day care, and one girl's birthday party!
- ✖ Kids and their parent leader(s)
- ✖ Available year-round; most are fall and spring
- ✖ Fee
- ✖ Staffed by James with occasional help from volunteer naturalists
- ✖ Under 10 programs a year
- ✖ Topics are wildlife watching and tracking, wetland ecology, and various other topics requested by leader such as outdoor careers.

Other Group Field Trips

- 🌐 Wide range of groups -- church group, treatment programs, college classes, The Nature Conservancy, etc.
- 🌐 These are mainly adults or older teens
- 🌐 Available year-round; requests are pretty random
- 🌐 Fee
- 🌐 Staffed by James with occasional help from volunteer naturalists
- 🌐 Number varies greatly but is under 10 a year
- 🌐 Topics vary but are still focused on the plants and wildlife of the wildlife area and on nature observation skills. Some of these programs, especially for the college classes, are specifically about more advanced topics such as management practices at the lakes, teaching techniques for environmental education, and water quality testing.

Bird Watching Walks

- ♣ Weekends; 2-hour-long bird watching walks for the general public
- ♣ Adults and very few older kids
- ♣ Year-round with more in fall and spring
- ♣ Free
- ♣ Staffed by James
- ♣ About 12 a year
- ♣ Emphasis is on teaching beginners the basic skills of identifying birds

Turtle Walks

- ✎ Weekends; 1 to 1 1/2 hour walks for the general public focused on the western painted turtle
- ✎ Families, lots of kids 4 to 10 years old
- ✎ April to October
- ✎ Staffed by James with occasional help from volunteer naturalists
- ✎ Free
- ✎ At least once a month during turtle season
- ✎ In addition to thoroughly discussing turtle natural history and the plight of the western pond turtle, we observe and discuss other aquatic life we see or that comes up in questions. We also always take a good look and beaver sign.

Twilight Tuesdays

- ✎ Wednesday nights -- ha, ha, just checking to see if you're awake!
- ✎ Tuesday evenings starting about two hours before sunset; very quiet walks for the general public
- ✎ Adults and families
- ✎ Summer
- ✎ Staffed by James
- ✎ Free
- ✎ Four to six a summer
- ✎ These are so awesome! This is where people learn that they can actually see mammals like beaver, deer, raccoon, nutria, otter, and mice by using the proper stalking and observing techniques. On half the trips people have seen beaver swimming in the lakes, including a baby one walk. This experience has a very dramatic impact on some people.

Smith and Bybee Lakes Day

- One day big event on a Saturday in May for the general public.
- Families, adults, and some youth groups
- May 19, 2001 -- don't miss it!
- Staffed by volunteers, James, and Lupine the past two years. A great use of many volunteers
- Free
- The one day may draw 200 people and involve 20 volunteers
- There is a morning bird walk and then the Journey Into Wetlands activity is ongoing from 11 AM to 4 PM. People walk through the wildlife area at their own pace and stop at four activity stations. The four stations are beaver, water birds, pond turtles, and water bugs.

plus - wed a.m. kids' pgms @ S&B in summer

Programs done by James Davis at other sites

Evening bird identification classes at Metro

- ✦ Two-hour, weekday evening classes on bird identification held at Metro
- ✦ Year-round except for summer and December
- ✦ Adults, some families with older children, some high school students
- ✦ Staffed by James
- ✦ Fee
- ✦ About 10 a year
- ✦ So far all these classes have been about basic bird watching skills, bird identification, feeding birds in your home, and the natural history of specific groups of birds, for example, birds of prey. The classes are scheduled so that there is a bird walk at Smith and Bybee within two week of the class. Classes are on the birds most common during the season of the class.

Other programs for various groups at their site

- ✦ Wow, these are all over the place. These programs vary the most and could be called "naturalist for hire." Although all attempts are made to focus these programs on Metro properties, some programs have been more on the general concepts of wildlife in the city, habitat protection, and the protection of natural areas and greenspaces.
- ✦ Special school groups such as TAG, alternative schools or treatment programs for youth, Portland Park Bureau programs, etc.
- ✦ Random year-round
- ✦ Staffed by James
- ✦ Fee (sometimes as much as \$100)
- ✦ Topics vary but are all centered on the concepts of protecting and managing natural areas within the Metro area for wildlife and on the surprising diversity of wildlife that we do have in the Metro region

Attendance at Smith and Bybee Lakes Wildlife Area

Attendance by fiscal year

	1996-1997	1997-1998	1998-1999	1999-2000	increase since 1996
Number of programs	55	42	52	86	56%
Number of people	1353	1398	1195	1798	33%
Contact hours	3789	4748	4496	8948	136%

Attendance at Smith and Bybee Lakes Wildlife Area

Attendance for first half of fiscal year, July -- Dec

	1996	1997	1998	1999	2000	Increase since 1996
Number of programs	23	19	21	36	44	91%
Number of people	327	378	497	542	680	108%
Contact hours	1749	1731	1971	1524	2618	50%