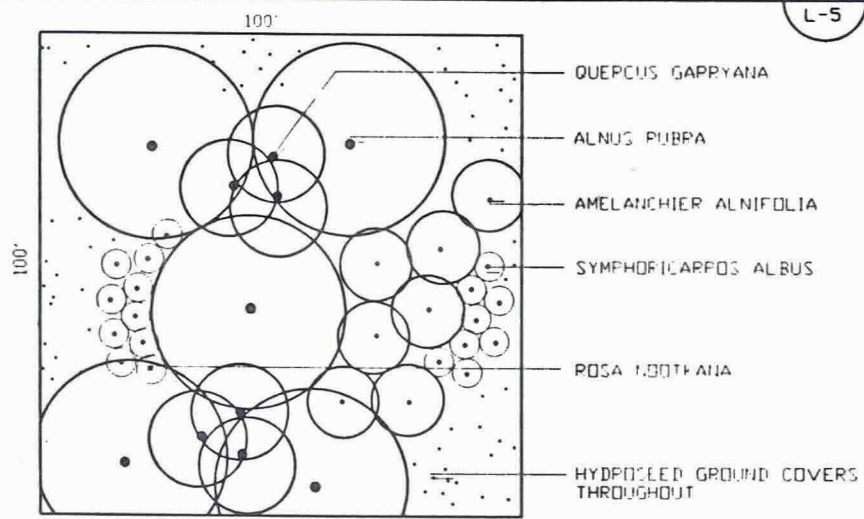
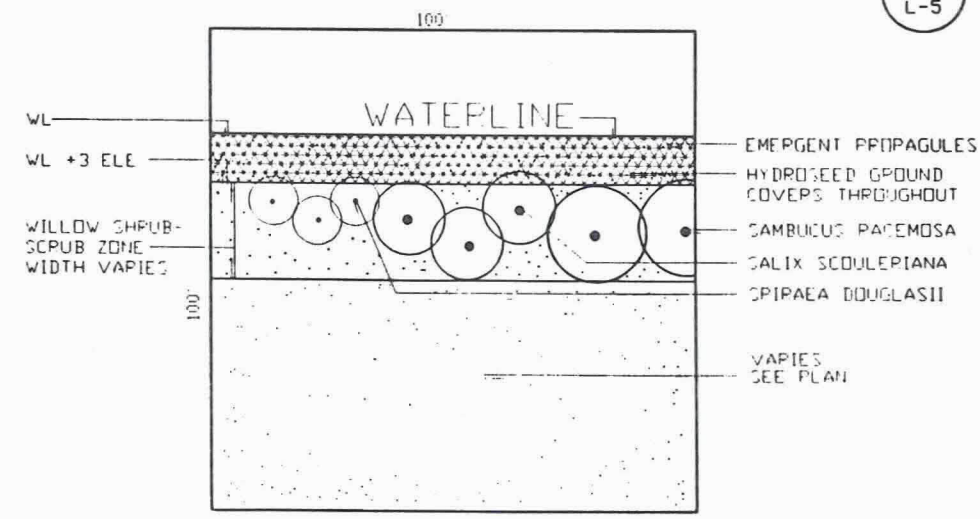


LOW WOODLAND SAMPLE PLANTING 1 L-5



HIGH WOODLAND SAMPLE PLANTING 2 L-5



EMERGENT MARSH/WILLOW SHRUB-SCRUB SAMPLE PLANTING AT WATER 3 L-5

BUFFALO SITE PLANT LISTS

LOW WOODLAND PLANT LIST

TYPE	PLANTING NOTES	QUANTITY
Trees		
Fraxinus latifolia	4-5' cont., Groups of 3-5, 60' O.C.	125
Shrubs		
Prunus virginiana	3-4' cont., Group of 3-5, 40' O.C.	40
Crataegus douglasii	3-4' cont., 20' O.C., Group of 3	125
Holodiscus discolor	3-4' cont., 15' O.C.	40
Symphoricarpos albus	3-4' cont., 6' O.C.	40
Corylus cornuta	3-4' cont., Groups of 3-5, 40' O.C.	80
Ground Covers		
Elymus glaucus	10 lbs./Acre, Hydroseed mix throughout	
Festuca rubra v. 'Rubra'	10 lbs./Acre, Hydroseed mix throughout	
'Regreen' (Cover Crop)	5 lbs./Acre, Hydroseed mix throughout	
Lupinus bicolor	1 lbs./Acre, Hydroseed mix throughout	

HIGH WOODLAND PLANT LIST

TYPE	PLANTING NOTES	QUANTITY
Trees		
Alnus rubra	3-4' cont., Groups of 3-5, 40' O.C.	125
Quercus garryana	1-2 gal., Groups of 3, 10' O.C.	125
Shrubs		
Amelanchier alnifolia	3-4' cont., 15' O.C.	175
Rosa nootkana	3-4' cont., 6' O.C.	175
Symphoricarpos albus	3-4' cont., 6' O.C.	175
Corylus cornuta	3-4' cont., Groups of 3-5, 40' O.C.	125
Ground Covers		
Elymus glaucus	10 lbs./Acre, Hydroseed mix throughout	
Festuca rubra v. 'Rubra'	10 lbs./Acre, Hydroseed mix throughout	
'Regreen' (Cover Crop)	5 lbs./Acre, Hydroseed mix throughout	

WILLOW SHRUB-SCRUB PLANT LIST

TYPE	PLANTING NOTES	QUANTITY
Trees		
Fraxinus latifolia	4-5' cont., 40' O.C. -- Group of 3	44
Shrubs		
Cornus stolonifera	2-3' cont., -- 15' O.C.	16
Physocarpus capitatus	2-3' cont., -- 8' O.C.	14
Ribes sanguineum	1-2' cont., -- 8' O.C.	17
Rosa pisocarpa	1-2' cont., -- 8' O.C.	20
Salix scouleriana	1-2' cont., Groups of 3, -- 15' O.C.	15
Sambucus racemosa	3-4' cont., Groups of 3, -- 20' O.C.	15
Spiraea douglasii	2-3' cont., Groups of 3, -- 10' O.C.	20
Ground Covers		
Alopecurus geniculatus	.5 lbs./Acre, Hydro-Seed mix throughout	
Elymus glaucus	10 lbs./Acre, Hydro-Seed mix throughout	
Festuca rubra v. 'Rubra'	10 lbs./Acre, Hydro-Seed mix throughout	
'Regreen' (Cover Crop)	5 lbs./Acre	

EMERGENT MARSH PLANT LIST

TYPE	PLANTING NOTES
Ground Covers	
Alopecurus geniculatus	.5 lbs./Acre - Hydroseed throughout
Beckmannia syzigachne	10 lbs./Acre - Hydroseed throughout
Carex densa	1" Propagules - 5' o.c. (WL - WL+3' elev.)
Carex obnupta	1" Propagules - 5' o.c. (WL - WL+3' elev.)
Deschampsia caespitosa	4 lbs./Acre - Hydroseed
Eleocharis palustris	1" Propagules - 5' o.c. (WL - WL+3' elev.)
Elymus glaucus	3 lbs./Acre - Hydroseed throughout
Juncus effusus	1" Propagules - 5' o.c. (WL - WL+3' elev.)
Juncus tenuis	1" Propagules - 5' o.c. (WL - WL+3' elev.)
'Regreen' (Cover Crop)	5 lbs./Acre - Hydroseed throughout
Scirpus microcarpus	1" propagules - 5' o.c. (WL - WL+3' elev.)

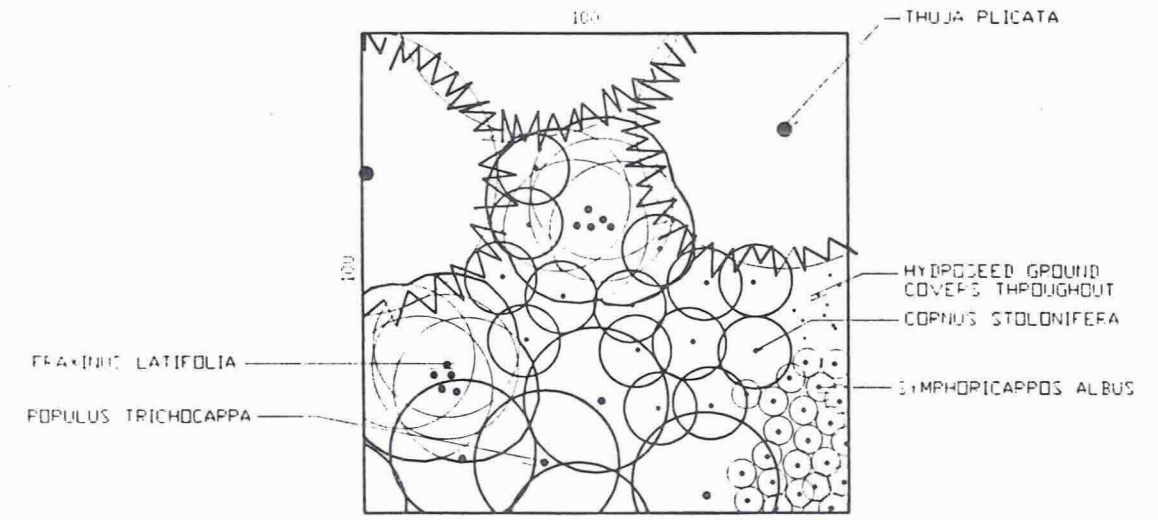
SEEDED MEADOW PLANT LIST

TYPE	PLANTING NOTES
Ground Cover	
Achillea millefolium	1/2 oz./acre, hydroseed as mix throughout
Agrostis gigantea	2 lbs./acre, hydroseed as mix throughout
Aster chilensis halli	1 oz./acre, hydroseed as mix throughout
Aster subspicatus	1 oz./acre, hydroseed as mix throughout
Anaphalis margaritacea	1 lb./acre, hydroseed as mix throughout
Aquilegia formosa	5 oz./acre, hydroseed as mix throughout
Bromus carinatus	4 lbs./acre, hydroseed as mix throughout
Clarkia amoena	2 oz./acre, hydroseed as mix throughout
Elymus glauca	10 lbs./acre, hydroseed as mix throughout
Festuca rubra v. 'Rubra'	10 lbs./acre, hydroseed as mix throughout
Lupinus bicolor	2 lbs./acre, hydroseed as mix throughout
Lupinus polyphyllus	2 lbs./acre, hydroseed as mix throughout
'Regreen' (covercrop)	5 lbs./acre, hydroseed as mix throughout
Solidago canadensis	2 oz./acre, hydroseed as mix throughout

ELROD SITE PLANT LIST

WOODLAND BUFFER PLANT LIST

TYPE	PLANTING NOTES	QUANTITY
Trees		
Abies grandis	3' - 4' cont., -- 60' O.C.	50
Fraxinus latifolia	4'-5' cont., Groups of 3-5, 60' O.C.	400
Populus trichocarpa	4'-5' cont., -- 30' O.C.	280
Thuja plicata	3'-4' cont., -- 60' O.C.	100
Pseudotsuga menziesii	3'-4' cont., -- 60' O.C.	50
Shrubs		
Corylus Cornuta	3'-4' cont., Groups of 3-5, 40' O.C.	375
Physocarpus capitatus	1'-2' cont., -- 8' O.C.	100
Cornus stolonifera	3'-4' cont., -- 15' O.C.	250
Holodiscus discolor	3'-4' cont., -- 15' O.C.	125
Rosa nutkana	1'-2' cont., -- 6' O.C.	375
Salix sitchensis	3'-4' cont., -- 15' O.C.	75
Symphoricarpos albus	3'-4' cont., -- 6' O.C.	286
Acer circinatum	3'-4' cont., multi-stem, Groups of 3-5, 45' O.C.	350
Ground Covers		
Elymus glaucus	10 lbs./Acre hydroseed mix throughout	
Festuca rubra v. 'Rubra'	10 lbs./Acre hydroseed mix throughout	
Lupinus bicolor	1 lb./Acre hydroseed mix throughout	
'Regreen' (Cover Crop)	5 lbs./Acre hydroseed mix throughout	
Ground Layer		
Elymus glaucus	10 lbs./Acre hydroseed mix throughout	
'Regreen' (Cover Crop)	20 lbs./Acre hydroseed mix throughout	
Festuca rubra v. 'Rubra'	10 lbs./Acre hydroseed mix throughout	



WOODLAND BUFFER SAMPLE PLANTING 4 L-5

PLANTING NOTES
 SAMPLE PLANTING PLANS DEPICT GENERAL PLANT LAYOUT AND SPACING. ACTUAL SITE CONDITIONS (SOILS, TOPOGRAPHY, AND EXISTING VEGETATION) SHALL BE TAKEN INTO ACCOUNT DURING PLANTING. PLANT TREES, SHRUBS AND PROPAGULES IN NATURAL PATTERNS CORRESPONDING TO EXISTING CONTOURS AND VEGETATION LAYOUT. ALL TREES AND SHRUBS FOR LANDSCAPE ARCHITECTS APPROVAL PRIOR TO PLANTING.

NO	DATE	BY	REVISIONS	CHK'D	APP'D	NO	DATE	BY	REVISIONS	CHK'D	APP'D

PORT OF PORTLAND
PORTLAND, OREGON

REGISTERED
LANDSCAPE ARCHITECT
TIMOTHY C. VAN WORMER
OREGON

DESIGNED BY: T. VAN WORMER
 DRAWN BY: T. VAN WORMER
 CHECKED BY:
 DATE: FEBRUARY, 1994
 SCALE: 1" = 20'

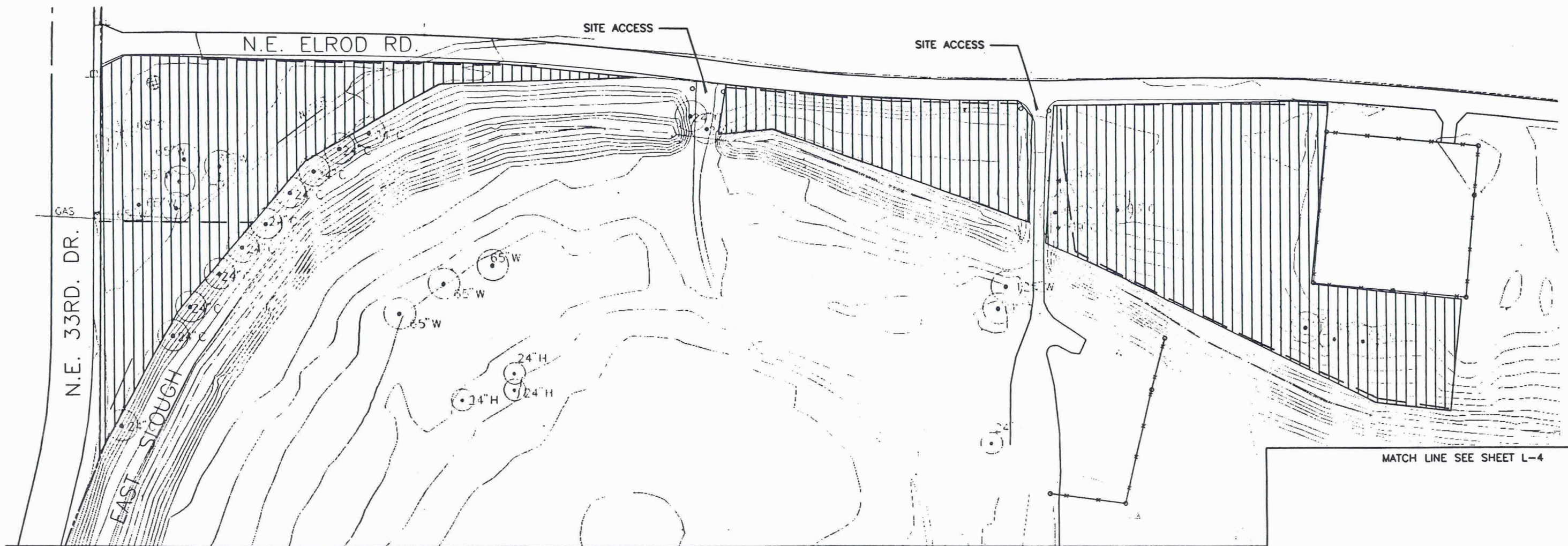
PORTLAND INTERNATIONAL AIRPORT
 AIRTRANS CENTER WEST AND NE BUFFALO STREET MITIGATION
 GRADING AND LANDSCAPING
 SITE DETAILS

SUBMITTED BY:

DRAWING NO.
PDX 94-5 5/5 (L-5)

930074
DESIGN NUMBER

21747
PROJECT NUMBER



MATCH LINE SEE SHEET L-4

MATCH LINE SEE SHEET L-4

NOTES

1. SAVE AND PROTECT ALL EXISTING TREES.
2. CONTRACTOR IS RESPONSIBLE FOR VERIFYING THE LOCATION OF ALL UTILITIES AND IMPROVEMENTS PRIOR TO START OF CONSTRUCTION.
3. 8' WIDE LANE FOR FUTURE IRRIGATION BY OTHERS. STAKE LOCATION FOR LANDSCAPE ARCHITECT APPROVAL PRIOR TO SEEDING OR PLANTING. SEEDED GROUND COVERS ONLY.

PLANTING LEGEND

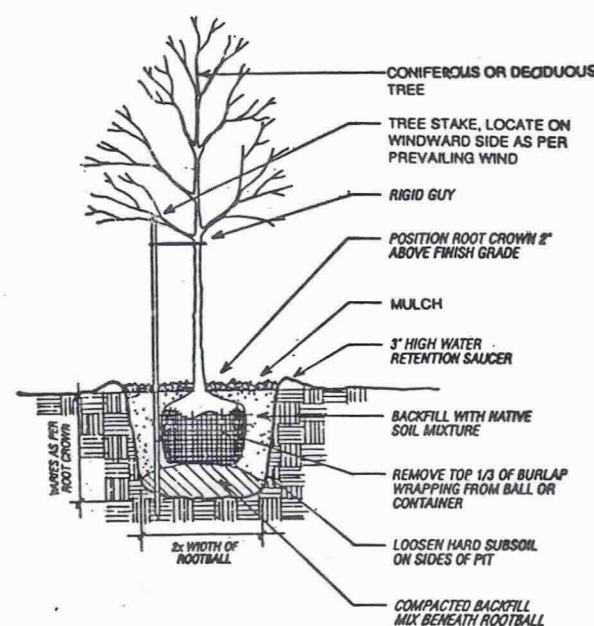
WOODLAND BUFFER 4 3.0 ACRES
44 SHRUBS AND 20 TREES
PER 100' X 100' AREA
HYDROSEED GROUND
COVERS THROUGHOUT

EXISTING TREE LEGEND

- A ALDER
B BIRCH
C COTTONWOOD
H HAWTHORN
W WILLOW

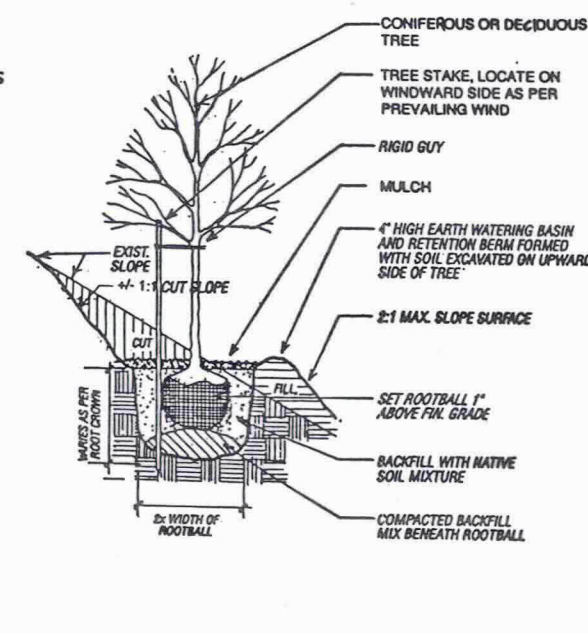
LEGEND

- EXISTING 2' CONTOUR
EXISTING FENCE
PROPERTY LINE
EXISTING POWER POLE
8' LANE, SEE NOTE 3.
ABANDONED WELL

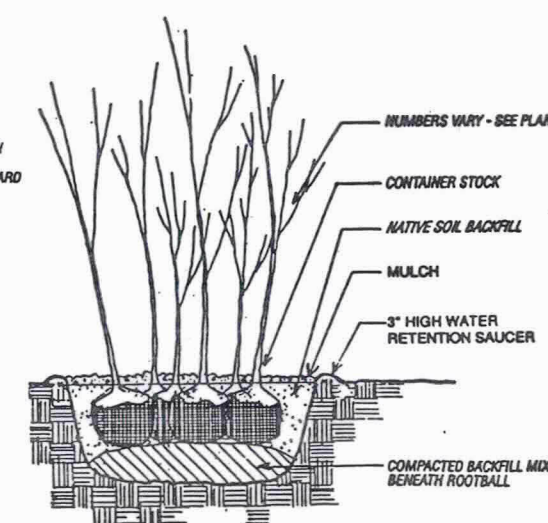


PLANTING PLAN
SCALE: 1" = 50'

TYPICAL TREE PLANTING
NTS



TYPICAL TREE PLANTING ON SLOPE
NTS



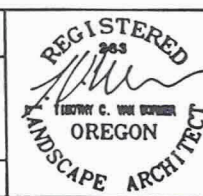
TYPICAL GROUPED PLANTING
NTS

AS CONSTRUCTED

NO.	DATE	BY	REVISIONS	CK'D	APP'V'D	NO.	DATE	BY	REVISIONS	CK'D	APP'V'D



PORT OF PORTLAND
PORTLAND, OREGON



DESIGNED BY T. VAN WORMER
DRAWN BY T. VAN WORMER
CHECKED BY
DATE FEBRUARY, 1994
SCALE AS SHOWN

PORTLAND INTERNATIONAL AIRPORT
AIRTRANS CENTER WEST AND NE BUFFALO STREET MITIGATION
GRADING AND LANDSCAPING
ELROD PLANTING PLAN

SUBMITTED BY [Signature]
DRAWING NO. PDX 94-5 3/5 (L-3)

MATCH LINE SEE SHEET L-3

EAST SLOUGH

MATCH LINE SEE SHEET L-3

SITE ACCESS

NEW GATE BY OTHERS

NEW FENCE BY OTHERS

EXISTING TREES SAVE AND PROTECT

NOTES

1. SAVE AND PROTECT ALL EXISTING TREES.
2. CONTRACTOR IS RESPONSIBLE FOR VERIFYING THE LOCATION OF ALL UTILITIES AND IMPROVEMENTS PRIOR TO START OF CONSTRUCTION.
3. 8' WIDE LANE FOR FUTURE IRRIGATION BY OTHERS. STAKE LOCATION FOR LANDSCAPE ARCHITECTS APPROVAL PRIOR TO SEEDING OR PLANTING. SEEDING GROUND COVERS ONLY.

PLANTING LEGEND

WOODLAND BUFFER 4 7.0 ACRES
44 SHRUBS AND 20 TREES PER 100' X 100'
HYDROSEED GROUND COVERS THROUGHOUT

EXISTING TREE LEGEND

A ALDER
B BIRCH
C COTTONWOOD
H HAWTHORN
W WILLOW

LEGEND

EXISTING 2' CONTOUR
EXISTING FENCE
PROPERTY LINE
8' LANE. SEE NOTE 3.
BURIED FAA CABLE & VAULT PROTECT

PLANTING PLAN

SCALE: 1" = 50'

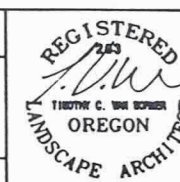
1
L-4

AS CONSTRUCTED

NO	DATE	BY	REVISIONS	CK'D	APP'D	NO	DATE	BY	REVISIONS	CK'D	APP'D



PORT OF PORTLAND
PORTLAND, OREGON



DESIGNED BY T. VAN WORMER
DRAWN BY T. VAN WORMER
CHECKED BY
DATE FEBRUARY, 1994
SCALE AS SHOWN

PORTLAND INTERNATIONAL AIRPORT
AIRTRANS CENTER WEST AND NE BUFFALO STREET MITIGATION
GRADING AND LANDSCAPING
ELROD PLANTING PLAN
SUBMITTED BY
DRAWING NO. PDX 94-5 4/5 (L-4)