



# CITY of PORTLAND

## OFFICE of TRANSPORTATION

Charlie Hales, Commissioner  
Engineering & Development  
Brant Williams, City Engineer  
1120 S.W. 5th Avenue, Room 802  
Portland, Oregon 97204-1914  
(503) 823-7004  
FAX (503) 823-7371  
TDD 823-6868

February 8, 1999

Emily Roth  
Metro  
600 NE Grand Ave  
Portland OR 97232-2736

Dear Ms. Roth:

Attached is the most current schedule for the N. Marine Drive Widening Project as you requested. The project has been delayed for various reasons, and is now moving ahead in accordance with this schedule.

Thank you for sending a copy of the Smith and Bybee Lakes Management Committee's design criteria. It was very informative, although I need to emphasize that the design criteria we are required to follow is spelled out for us in the document approved by City Council; the "Final Draft for the North Marine Drive Widening and Rail Relocation Project," dated July 22, 1998. It is our responsibility to ensure that the preliminary design product covers bullet items 1 through 10 on pages 3 and 4 of this document. I have enclosed a copy of the Final Draft for your information.

We intend to conduct public workshops on the design as directed by the City Council resolution. The emphasis of the Design Review Workshops will be on the improvements within the public right-of-way listed below:

1. Noise wall design and location.
2. Landscape design – native and conventional.
3. 40-mile loop trail and location.
4. Bicycle and pedestrian safety.
5. Water quality and spill containment.

Greg Jones, Manager of the Arterial Improvements Division of Transportation Engineering & Development, and Bill Bach, Director of Development Services for the Port, will be attending the next meeting of the Smith and Bybee Lakes Management Committee to give an update of the N. Marine Drive Extension Project.

If you have any questions, please feel free to contact me at 823-5415.

Sincerely,

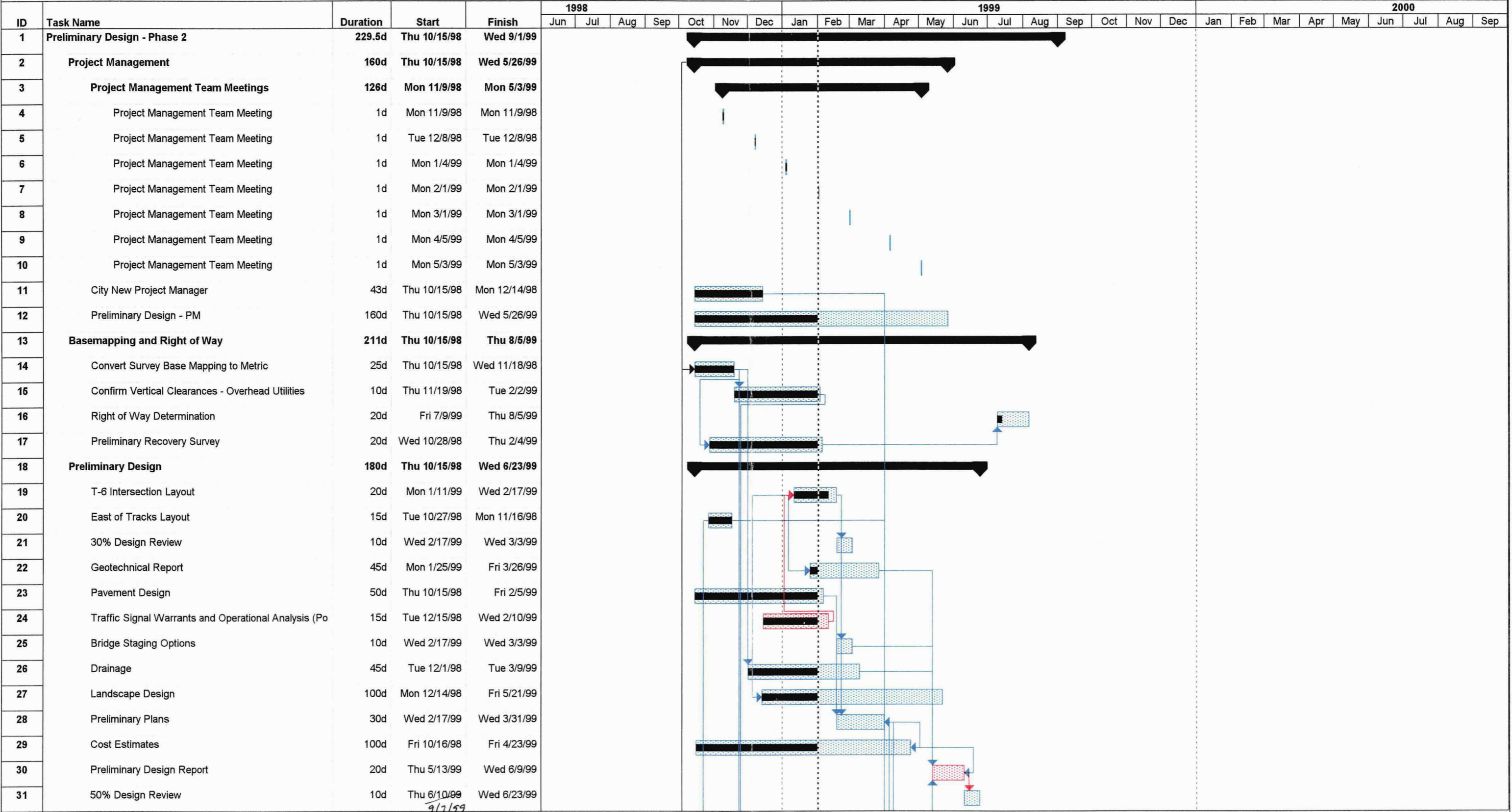
Carol A. Durand, P.E.  
Assistant Project Manager

CAD:clm  
Attachment

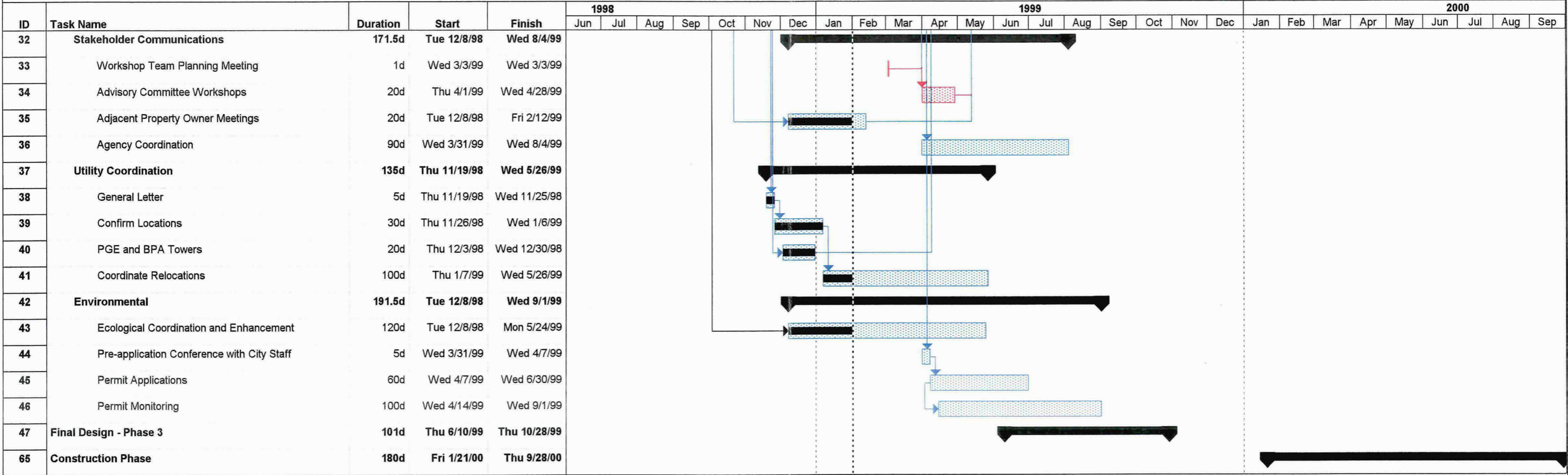
c: Greg Jones  
Stacy Bluhm  
Brett Kesterson

Marilyn Leitz, Port of Portland  
Christ White, Port of Portland  
Jim Bauman, CH2M Hill

North Marine Drive Extension  
City of Portland/ Port of Portland  
Prepared By: CH2M HILL



North Marine Drive Extension  
City of Portland/ Port of Portland  
Prepared By: CH2M HILL



Project: North Marine Drive Extension  
Date: Mon 2/1/99

Task



Progress



Summary



Rolled Up Critical Task



Rolled Up Progress



Critical Task



Milestone



Rolled Up Task



Rolled Up Milestone

