
**Smith and Bybee Wetlands Natural Area
Management Committee**

Larry Devroy, Chair



METRO

600 NE Grand Ave.
Portland, OR 97232-2736

Smith and Bybee Wetlands Management Committee Meeting

5:30 p.m. - 6:30 p.m., Tuesday, Jan. 24, 2006
Metro Regional Center, 600 N E Grand Ave., Room 270
Portland, Oregon 97232

AGENDA

Welcome and introductions	(Devroy)	5:30 pm
Approve previous meeting's notes	(Devroy)	5:30 – 5:35 pm
St. Johns Landfill update		5:35 – 6:20 pm
Site restoration overview and 2005 developments on landfill	(Paul Vandenberg)	
Habitat development, local hydrology and trails project	(Elaine Stewart)	
RI/FS project update	(Paul Burnet, CH2M Hill)	
Updates and next meeting's agenda		6:20 – 6:30 pm
Adjourn		6:30 pm

SBMC

1-25-06

minutes/notes:

Devoey - emphasize "at this time" for ~~item~~ item A top of p. 2 - mention this was subject of considerable discussion.

* ems - have Burnett send ppt outline to Vickie - or notes pp - for minutes
- need conceptual site model 4/0

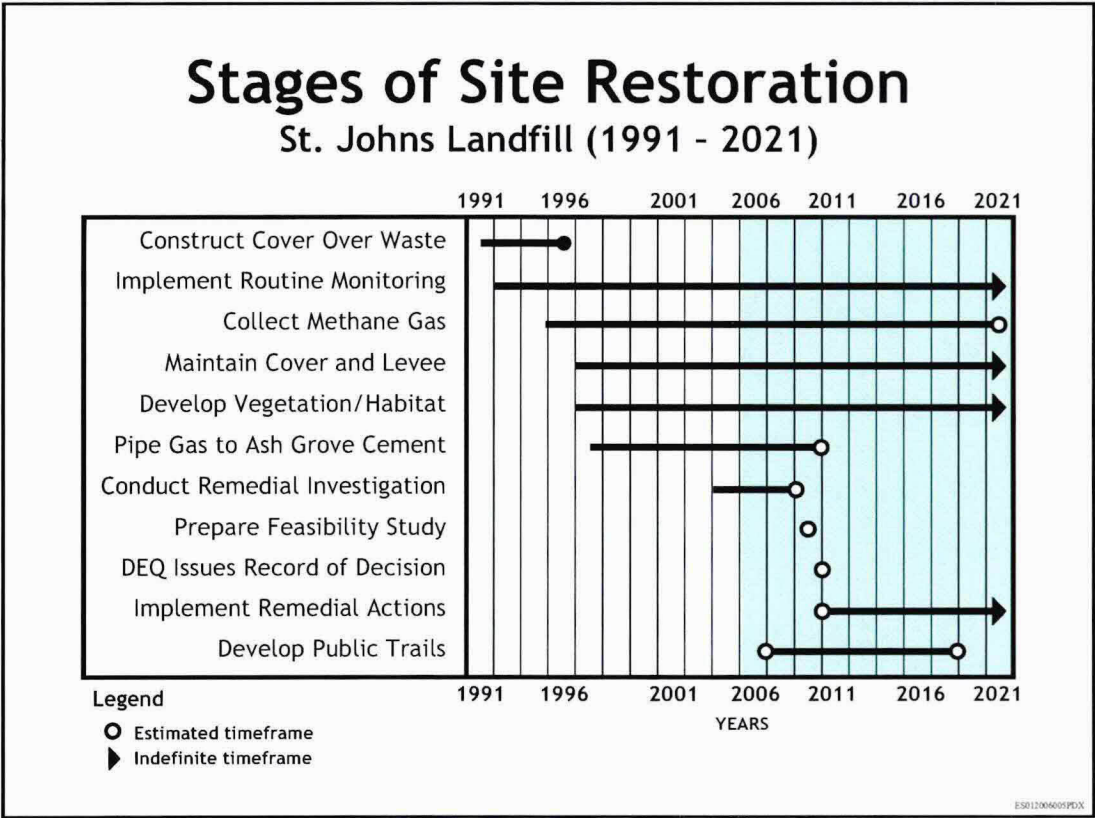
Prelim results -

- no exceedances of screening levels for organics for soil
- low water surf/gradwater samples
 - = no VOC's (all non-detects)
 - = no organics except one
 - no PCBs ~~also~~

Letter of support - PV requested - for COE pjt. Paul will provide supporting info./summary prior to mtg - & we'll put on agenda next time. Also PV will provide design doc from COE's consultant.

Next agenda - COE pjt., NRMP, update on damage from flood

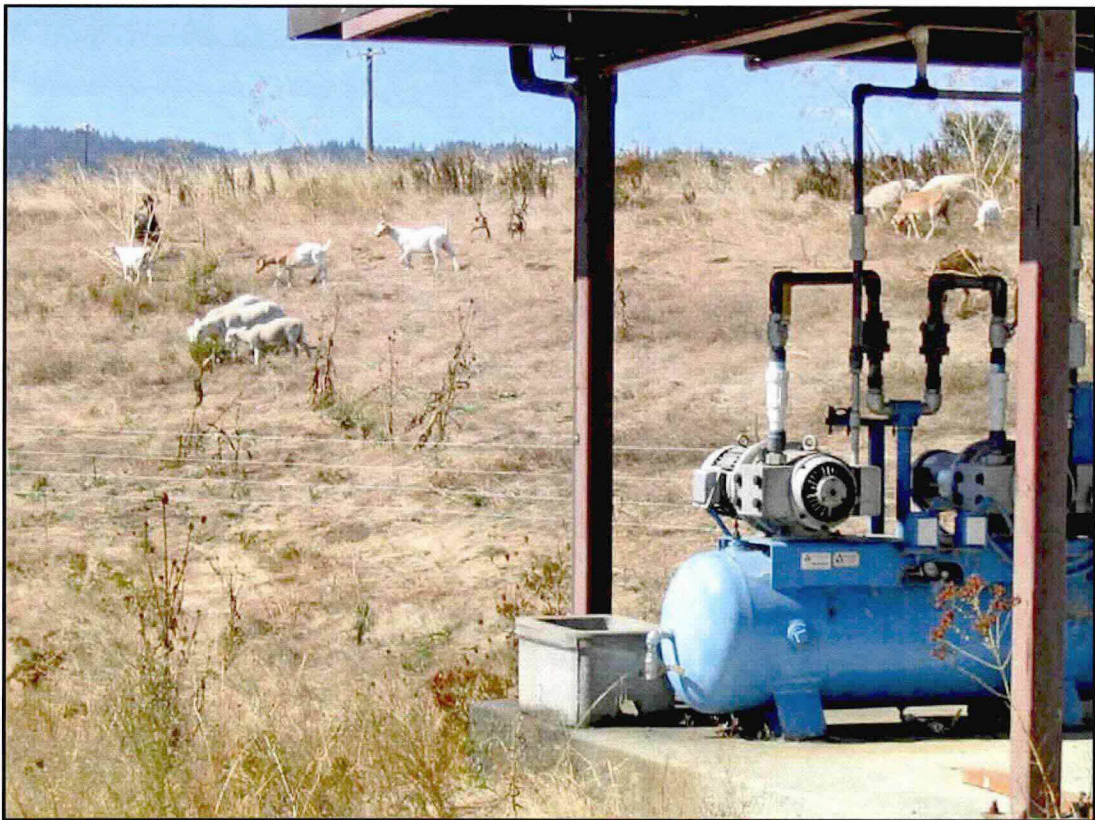
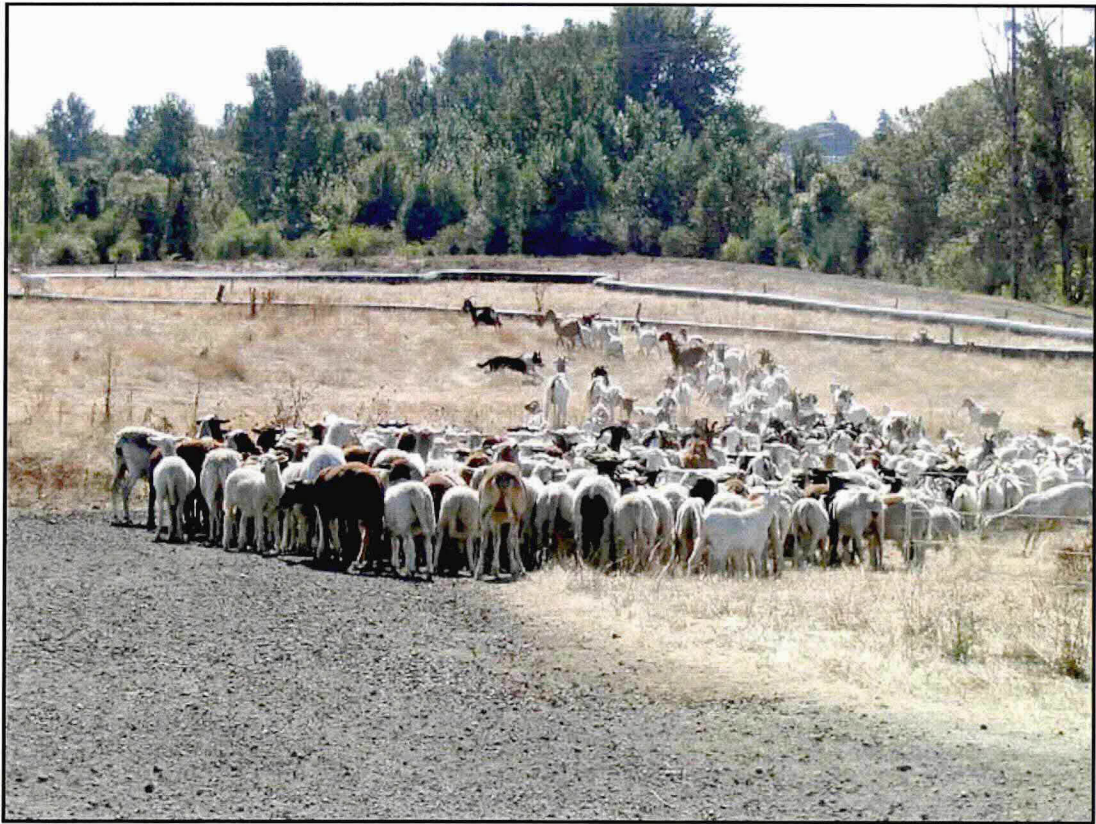
PV - ended 6:10 ems ended 6:20
Paul B. ended 6:55

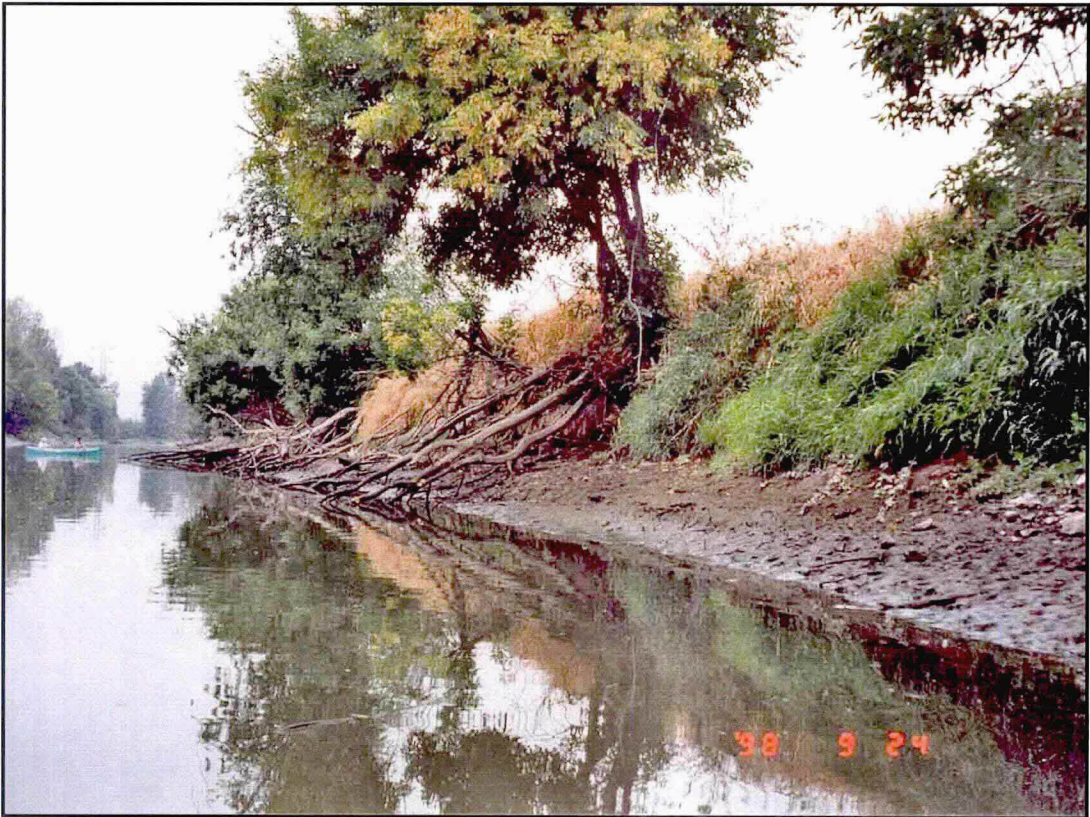
















Ecological Restoration in Smith-Bybee Wetland

- Vegetation management
- Habitat development
- Local hydrology
- Trail project

ES01206605PDX

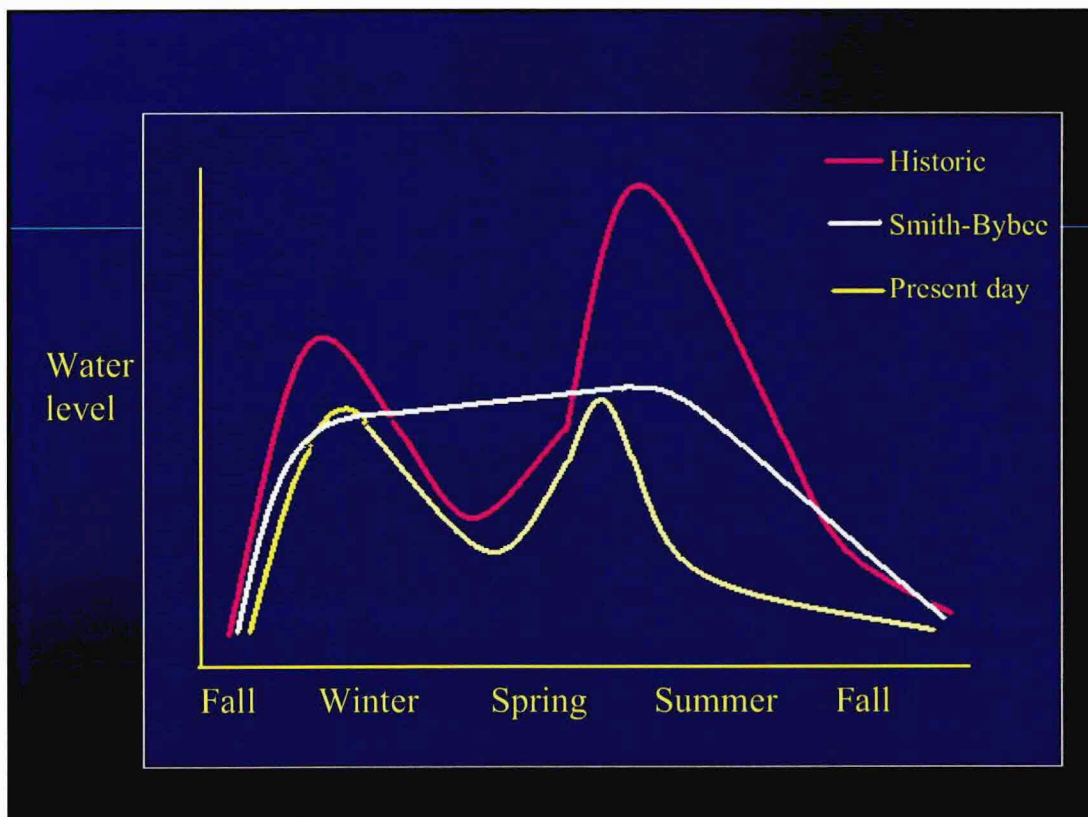




Focal Species

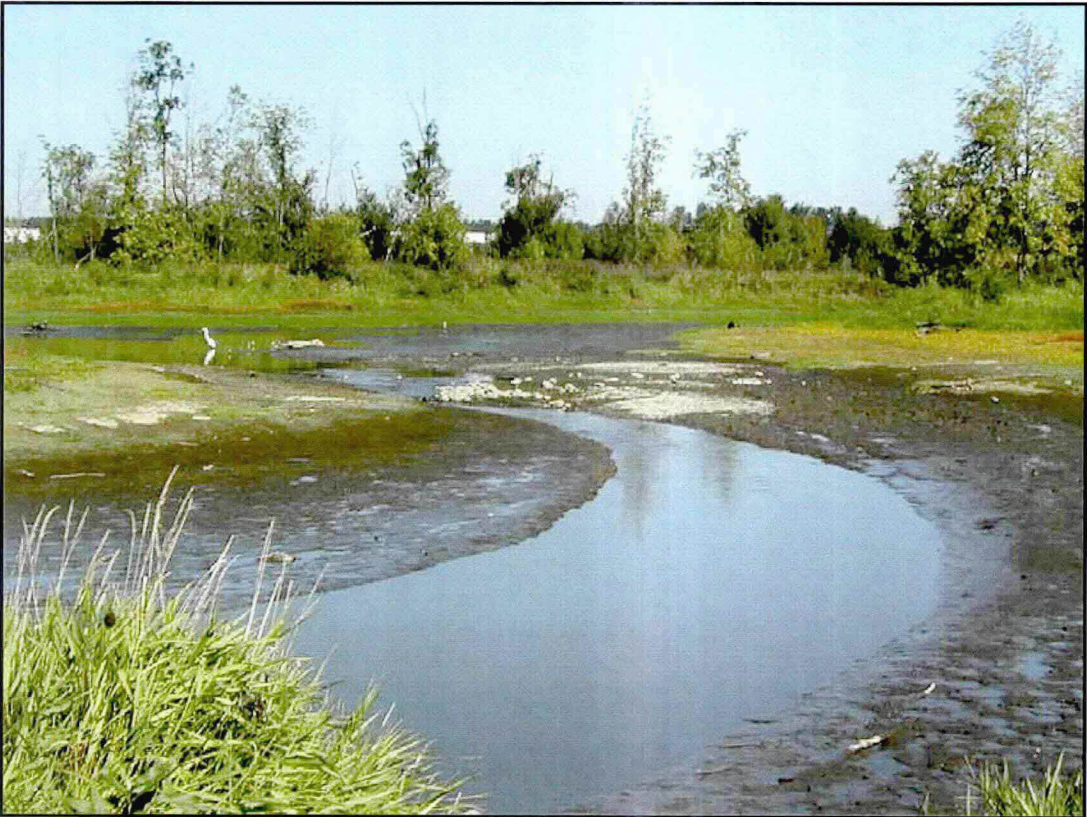
- Western Meadowlark | *singing perches*
- Horned Lark | *nesting and foraging sites*
- Painted Turtle | *nesting sites*
- Northern Harrier | *foraging sites*

ES01206609PDX















Trails Project

- Evaluate North Slough bridge feasibility
- Study perimeter road and ash forest routes
- Long-term: spur trail and interpretive opportunities

ES01206605PDX

Remedial Investigation

Objectives of the RI: calculate risks to human health and the environment

- Identify hazardous substances released
- Determine nature and extent of contamination
- Identify pathways and receptors
- Ensure data are sufficient quality and quantity to characterize site
- assess risks and evaluate remedial options

ES01206605PDX

RI Work Plan

Overview of tasks

- Evaluate existing data
 - Historical groundwater data
 - Historical sediment data
 - Air emission data
- Collect additional data
 - Soil
 - Shallow groundwater
 - Sediment

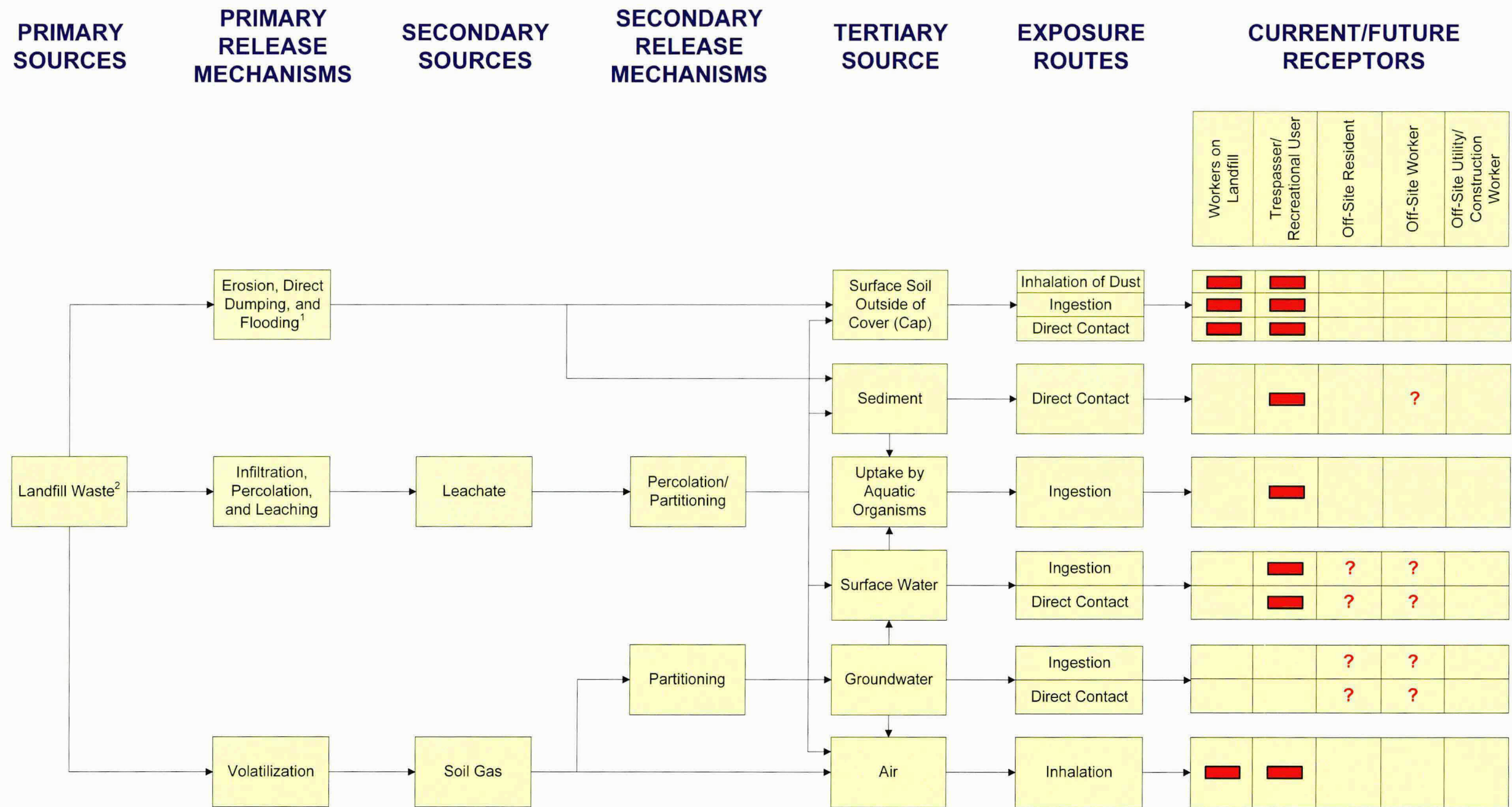
ES&I200605PDX

RI Work Plan *(continued)*

- Evaluate data adequacy
- Characterize nature and extent of contamination
- Conduct assessments of risk

ES&I200605PDX

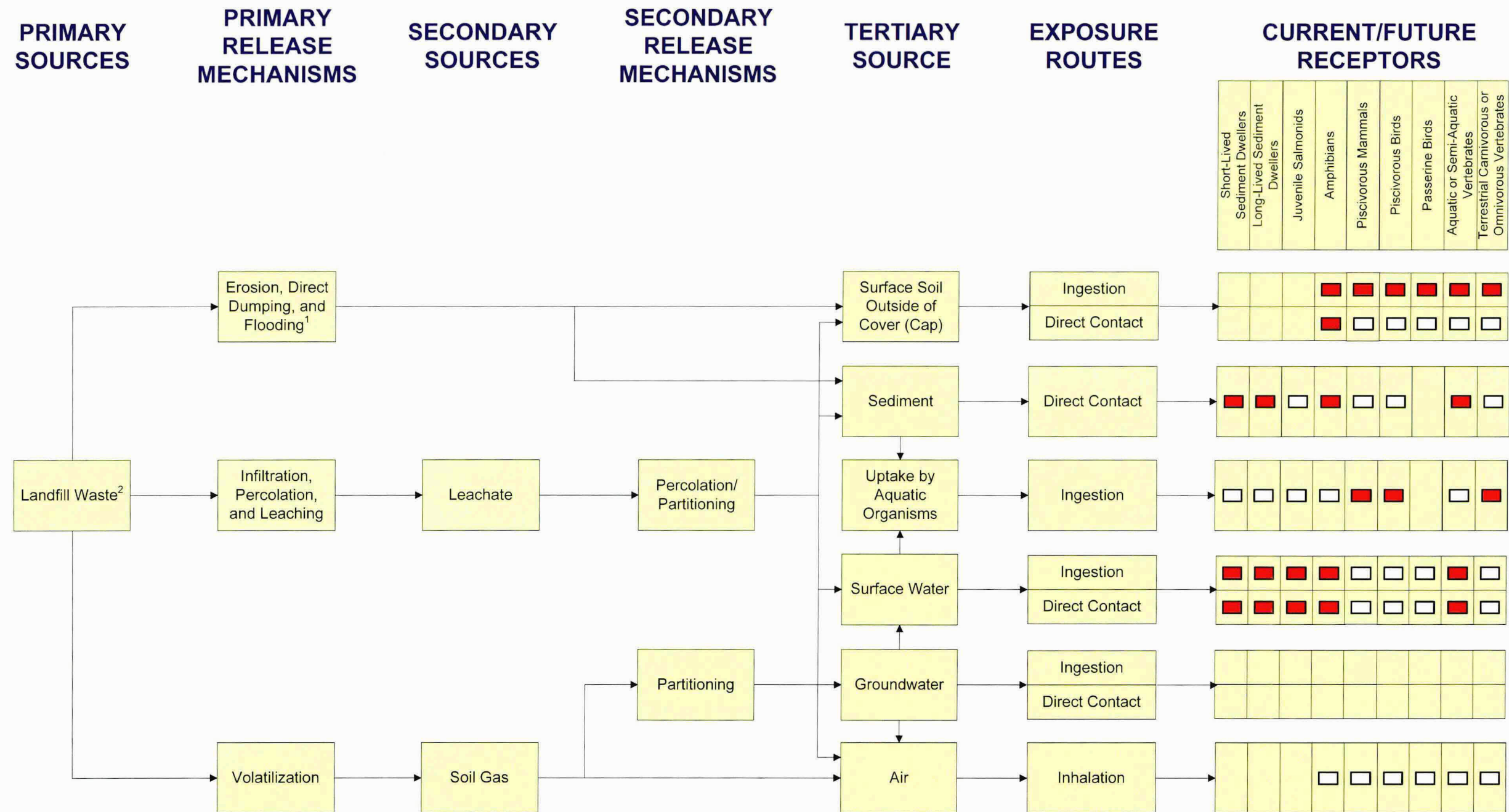
Conceptual Site Model for Potential Human Exposures



Notes: ¹ Possible historical release mechanism, waste now capped. The only current transport mechanism is via infiltration, percolation, leaching, and volatilization. ² The landfill is covered and management practices preclude contact of workers with refuse unless appropriately trained and wearing protective gear.

Legend:
█ Potentially Complete Pathway
? Potentially Complete Pathway Pending Results of Beneficial Use Survey

Conceptual Site Model for Potential Ecological Exposures



Notes: ¹ Possible historical release mechanism, waste now capped. The only current transport mechanism is via infiltration, percolation, leaching, and volatilization.
² Landfill has been capped and refuse is not exposed.

Legend:

- Potentially Complete Pathway
- Potentially Complete Pathway, Will be Evaluated Qualitatively in the Ecological Risk Assessment

RI Schedule

- Data collection and evaluation being conducted through Summer 2006
- Report addressing site characteristics, data analysis and risk assessments in 2007
- Feasibility Study completed in 2007

ES01200605FDX

Project Updates

Tasks completed:

- Soil sampling
- Shallow groundwater/surface water discharge—low water conditions
(sampling and flow rate sampling)

ES01200605FDX

Soil Sampling Locations

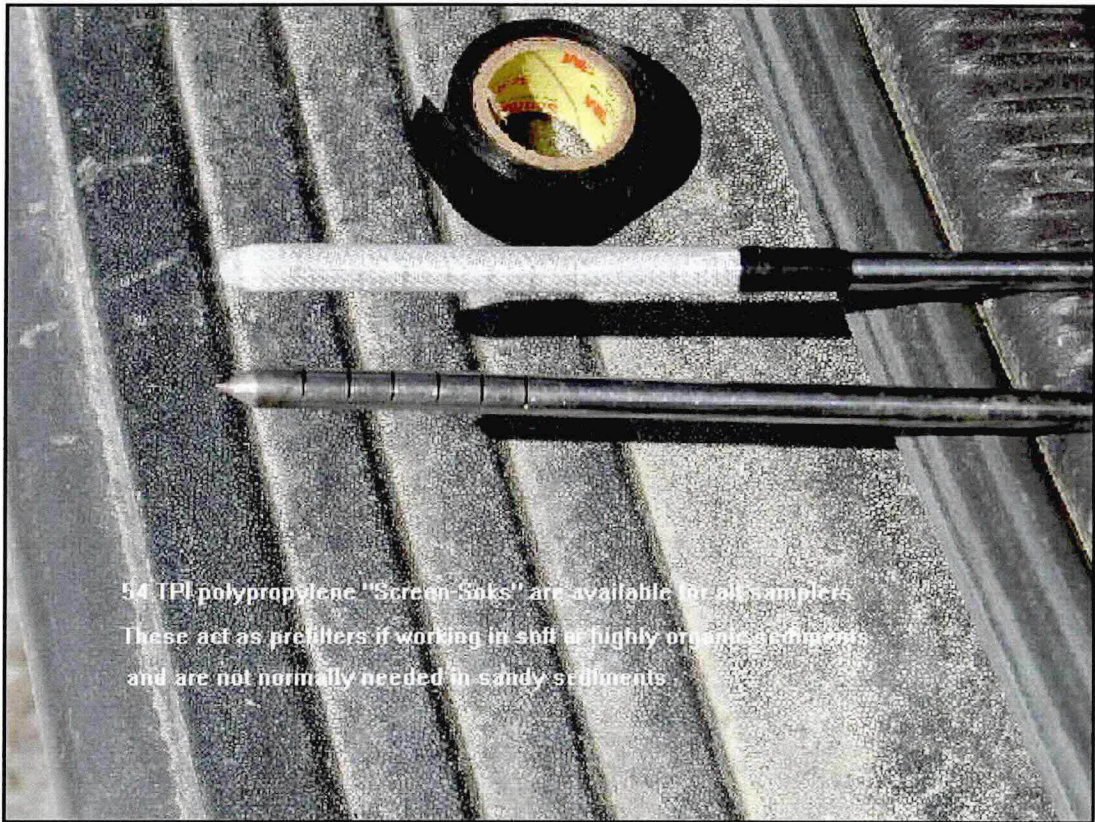


PDX

2005 Low Water Pore Water Sampling Locations



PDX



Sampling October 2005



Project Updates *Tasks underway*

- Assessment of available air data
- Assessment of available sediment data
- Assessment of available groundwater data
- Identification of species and habitat types; preliminary screening for ecological risk

Temporal Profile of Gas Flow

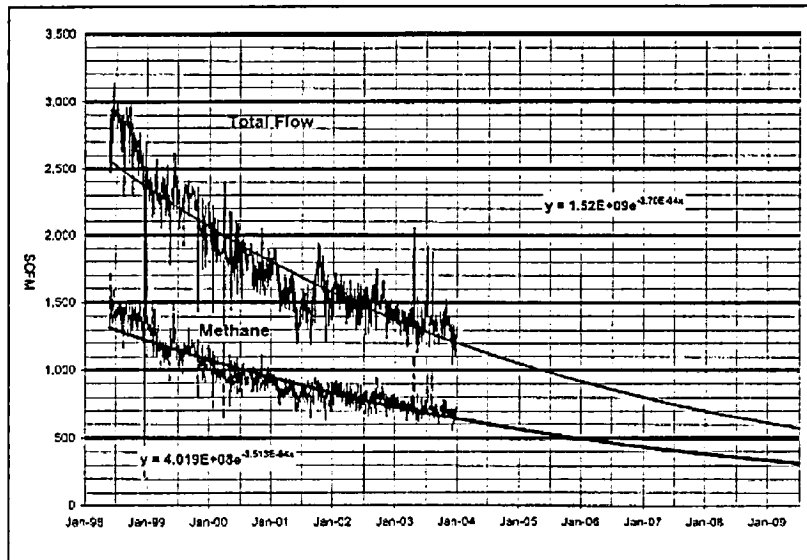


FIGURE 11
Gas Flow

2004 ANNUAL ENVIRONMENTAL MONITORING REPORT
METRO ST. JOHN'S LANDFILL

Source: 2003 Annual Environmental Monitoring Report

CH2MHILL

1

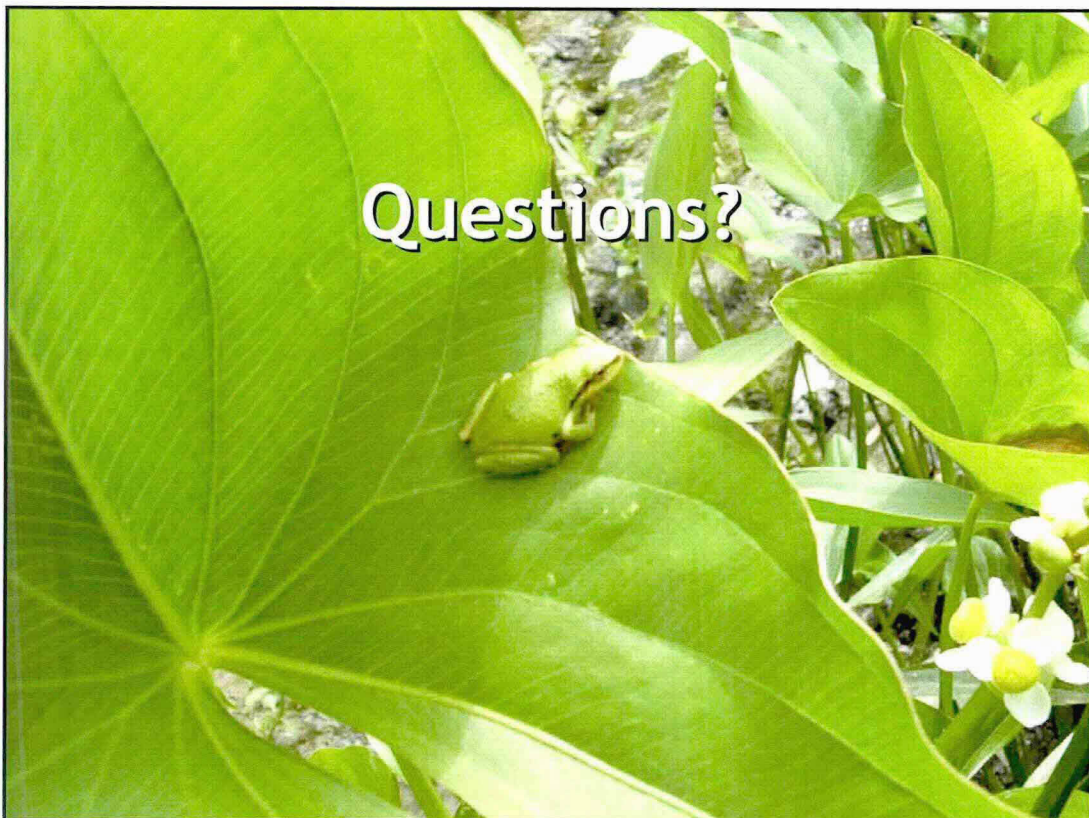
Project Updates Tasks for 2006

- Shallow groundwater/surface water discharge—high water conditions (*sampling and flow rate sampling*)
- Supplemental sediment sampling
- Describe nature and extent of groundwater contamination

Project Updates

- Assess need for additional data to support risk assessments
- Conduct human health and ecological risk assessments
- Prepare range of potential remedial actions in Feasibility Study

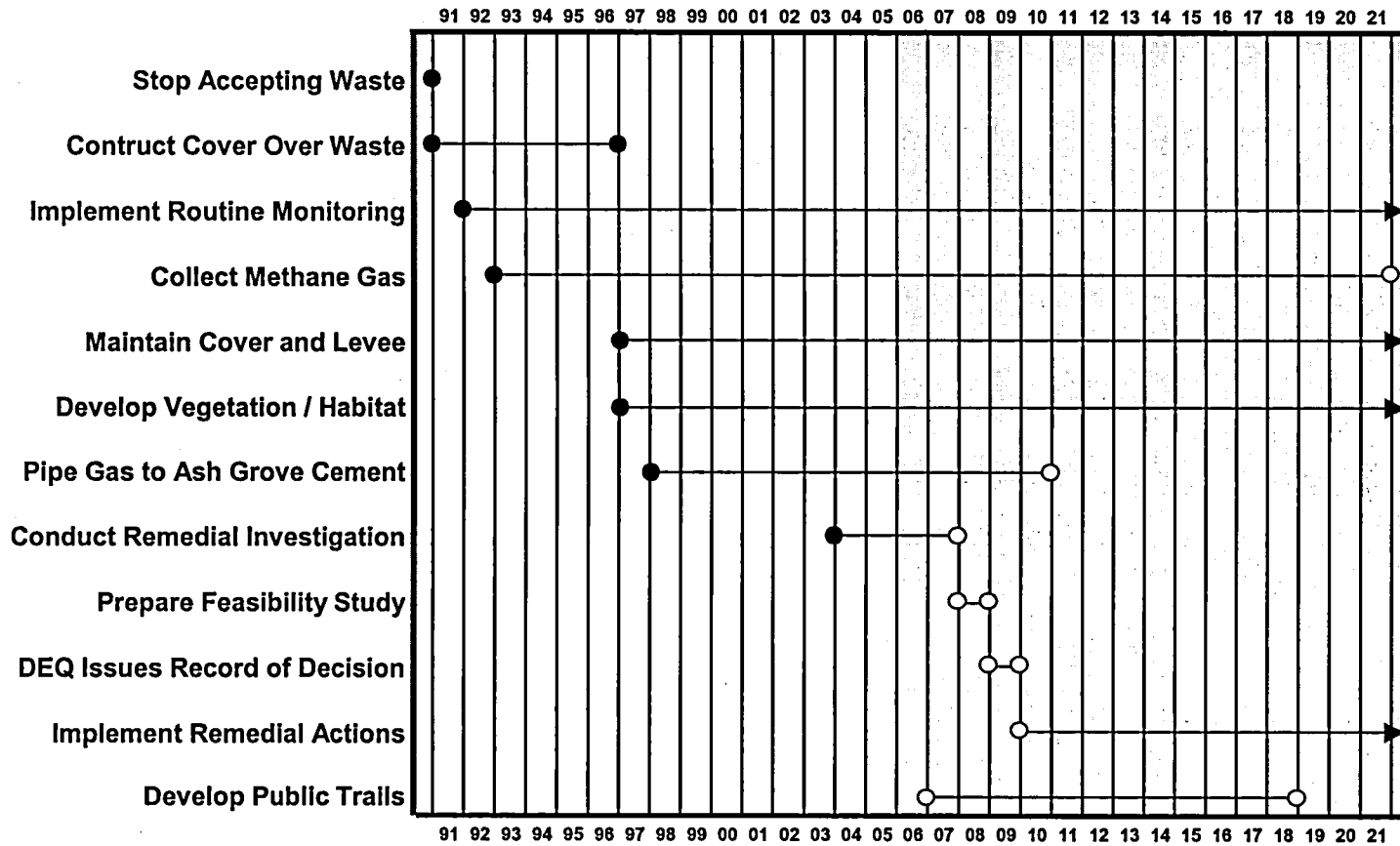
ES01206605P00X



**SIGNIFICANT EVENTS
2005
ST. JOHNS LANDFILL**

- Feb:** One Flare Removed (Due to Reduced Flow of Methane Gas)
On-Site Treatment of Landfill Gas Condensate
- Mar:** RI Work Plan Approved by DEQ
- Jun:** RI Fieldwork Started
- Jul:** Grass Fire on Landfill Surface
- Sep:** Sheep & Goats Used for Selective Weed Control
Sagittaria latifolia (Wapato) Proliferates in Blind Slough
- Oct:** Metro Web Site Adds Pages for SJLF
- Nov:** Federal Funding to Complete Planning of Perimeter Levee Project
- Dec:** Metro Council Selects Trail Alignment for Additional Study
North Slough tops its Banks as River Stage Rises Rapidly

Stages of Site Restoration St. Johns Landfill (1991 - 2021)



○ Estimated timeframe
▶ Indefinite timeframe

Smith-Bybee Wetlands Management Committee
January 24
Outline: St. Johns Landfill Update

PV (10 min.)

- Stages of Site Restoration
- Developments During 2005

ES (10 min.)

- Vegetation Management
- Habitat Development
- Local Hydrology (vs. LF Perimeter Levee)
- Trail Project (Next Steps)

PB (15 min.)

- RI Work Plan (Overview / Schedule)
- Tasks Underway (Update Summaries)
- Tasks to be Initiated in 2006 (Outline)

by Tue. 11/17
send 4-5 slides in
format to CHZ

→ UMS ppt
→ nature of hydrology - # coop men. of LF bank
subarea 1 1st, then subarea 5 a few yrs later

FOSB - April mtg.
1st Wed.
6:30pm

SJNA - Feb. mtg.
2nd Mon.
2/13 7:00

DEVELOPMENTS DURING 2005

- February:** **Removal of One Flare (Due to Reduced Gas Flow)**
Installation of On-Site Treatment of Landfill Gas Condensate
- March:** **Approval by DEQ of RI Work Plan**
- June:** **Start of RI Fieldwork**
- July:** **Grass Fire on Landfill Surface**
- September:** **Sheeps & Goats Used for Selective Weed Control**
Proliferation of *Sagittaria latifolia* (Wapato) in Blind Slough
- October:** **New Pages For SJLF Added to Metro Web Site**
- November:** **Fed Funding Secured to Complete Planning of Perimeter Levee Project**
- December:** **Metro Council ^{selects} Recommends Trail Alignment ^{for} and Additional Study**
Rapid Rise in River Stage and Topping of North Slough Banks

↑

ms send photos to PV