

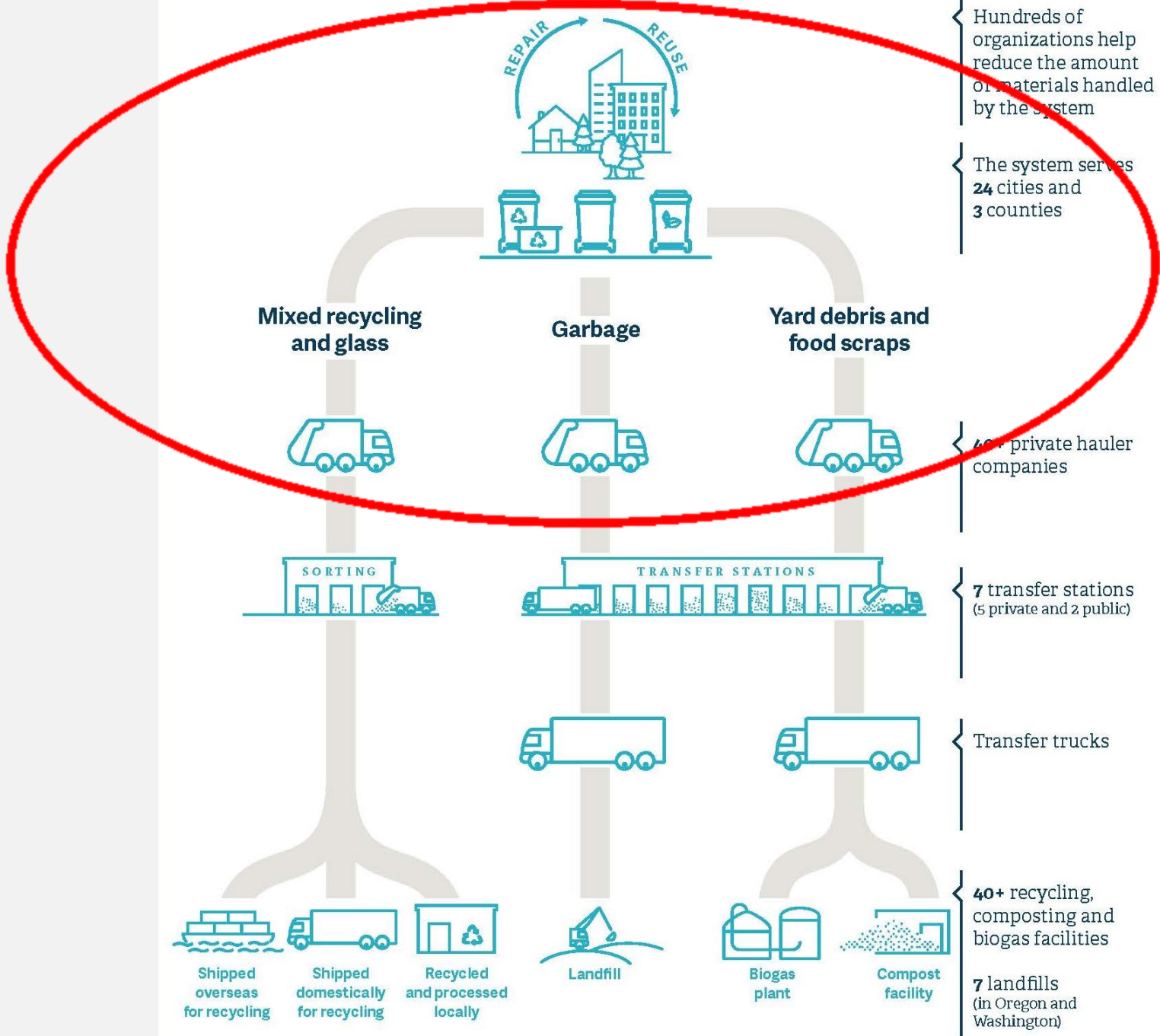
CITY AND COUNTY ROLE IN THE GARBAGE AND RECYCLING SYSTEM

Regulation and Collection

SOLID WASTE SYSTEM MANAGEMENT: WHO DOES WHAT?

- **State** sets goals and direction, conducts research, and protects air and groundwater
- **Metro** sets regional program standards, regulates where material goes after collection, owns two public transfer stations
- **Cities and counties** regulate collection
- **Garbage and recycling companies** collect material and own and operate facilities

CITIES AND COUNTIES REGULATE COLLECTION



CITY AND COUNTY REGULATORY ROLE

- Establish and enforce collection requirements (including Metro's regional service standards and State regulations)
- Franchise collection companies

NOTE: Portland commercial haulers are regulated via permits and are not franchised/rate-regulated

- Set the rates hauling companies must charge customers for garbage, recycling, and composting collection
- Support and educate system users (February RWAC)

SYSTEM USERS

COMMERCIAL



RESIDENTIAL



COLLECTION FRANCHISES

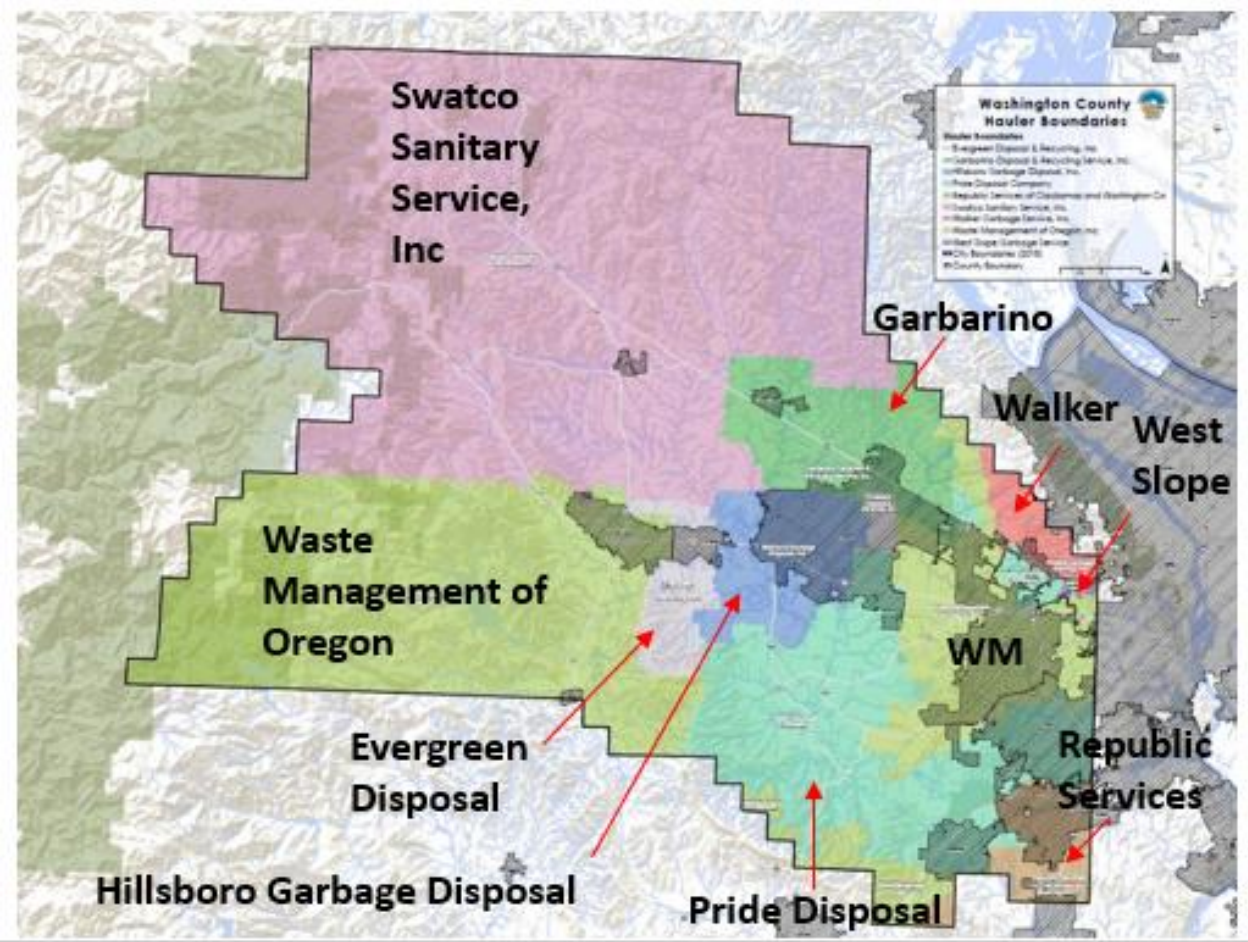
Franchises are:

- A special type of contract authorized by Oregon law for use locally
- A regulatory tool used to deliver collection service consistently and transparently

The public purposes for local franchise systems include:

- Protection of public health, safety, and welfare
- Uniform standards of service and fees - public process
- Ensures service is available to all customers
- Overall rate stability and long-term service stability
- Efficient and safe use of streets and roads
- Flexibility to meet new environmental, safety, and societal goals
- The development of robust and cost-effective recycling opportunities

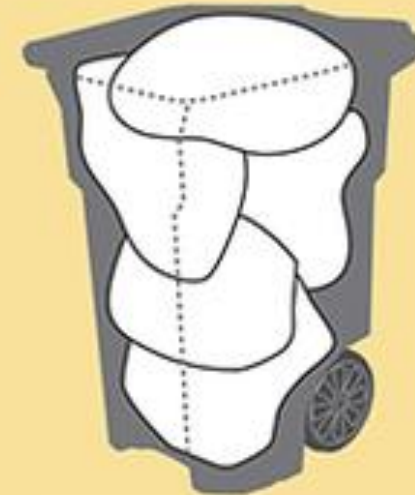
EXAMPLE FRANCHISE MAP



RATES & SERVICE

**RIGHT
SIZE**
YOUR GARBAGE
CONTAINER

Choose the garbage container that fits your property's needs.



20*	GALLON Roll Cart	35	GALLON Roll Cart	60	GALLON Roll Cart	90	GALLON Roll Cart
60	POUNDS Weight Limit	85	POUNDS Weight Limit	135	POUNDS Weight Limit	175	POUNDS Weight Limit
Approximately 2	TALL Kitchen Bags	Approximately 3	TALL Kitchen Bags	Approximately 4	TALL Kitchen Bags	Approximately 5	TALL Kitchen Bags

1, 1½ and 2 yard garbage containers are also available.
*Some 20-gallon service customers will receive a modified 35-gallon roll cart.

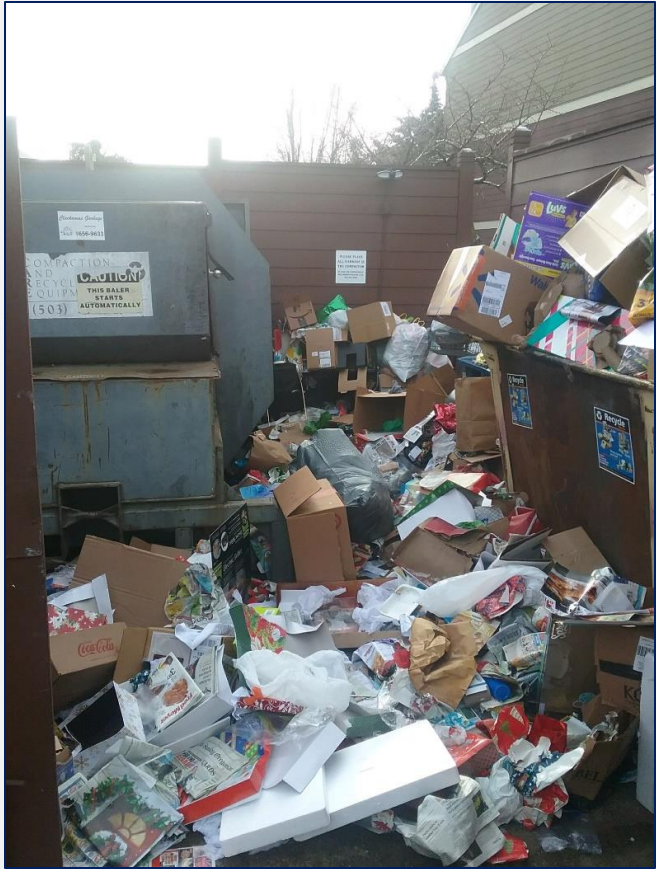
ADVANCING EQUITY AND DIVERSITY IN WASTE COLLECTION

- Equitable service for customers
- Workforce diversity
- Opportunities for underrepresented companies

- City of Portland public waste collection contracts
- Hauler DEI plans
- Driving Diversity program



RULES & ENFORCEMENT



THANK YOU!



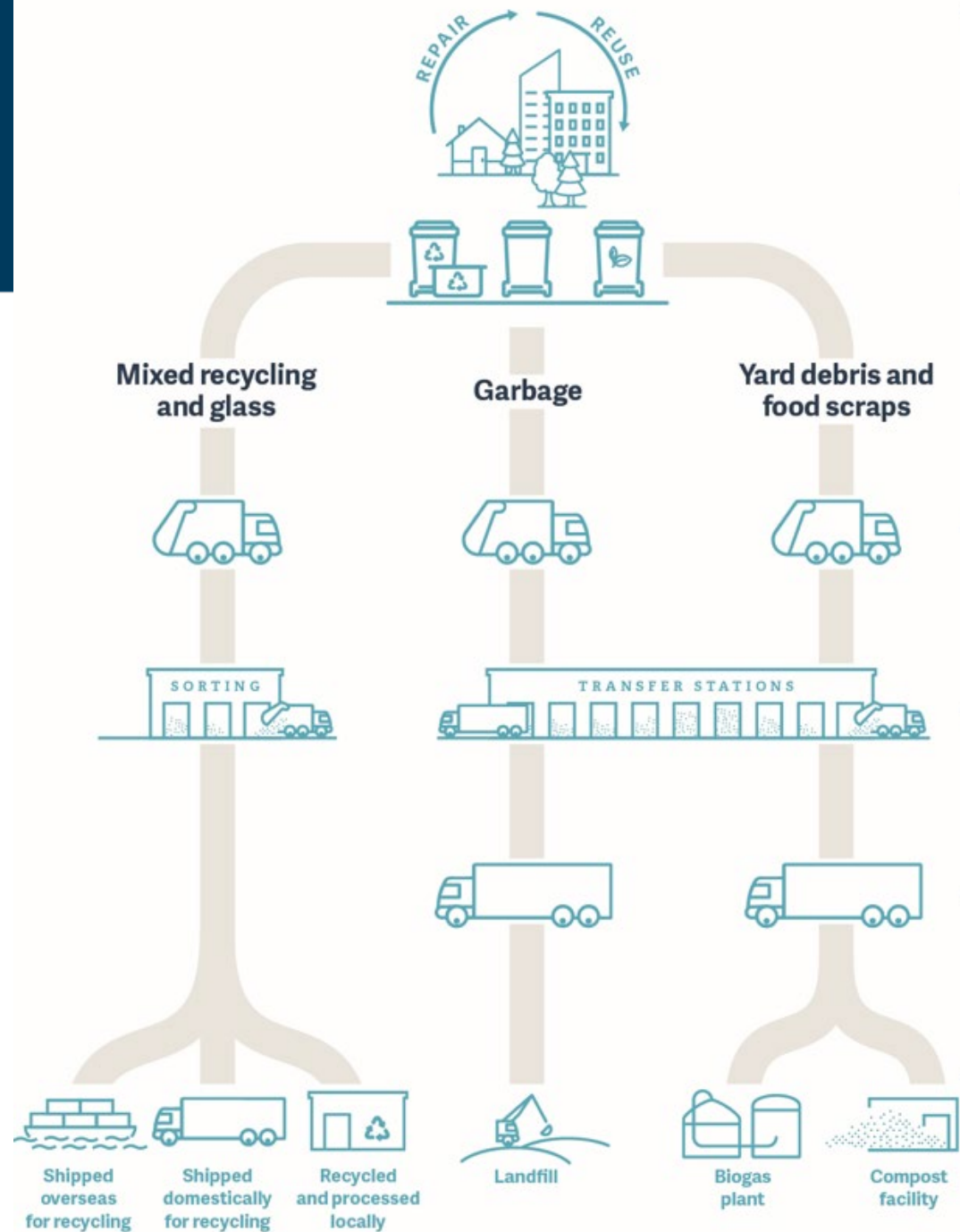
Metro

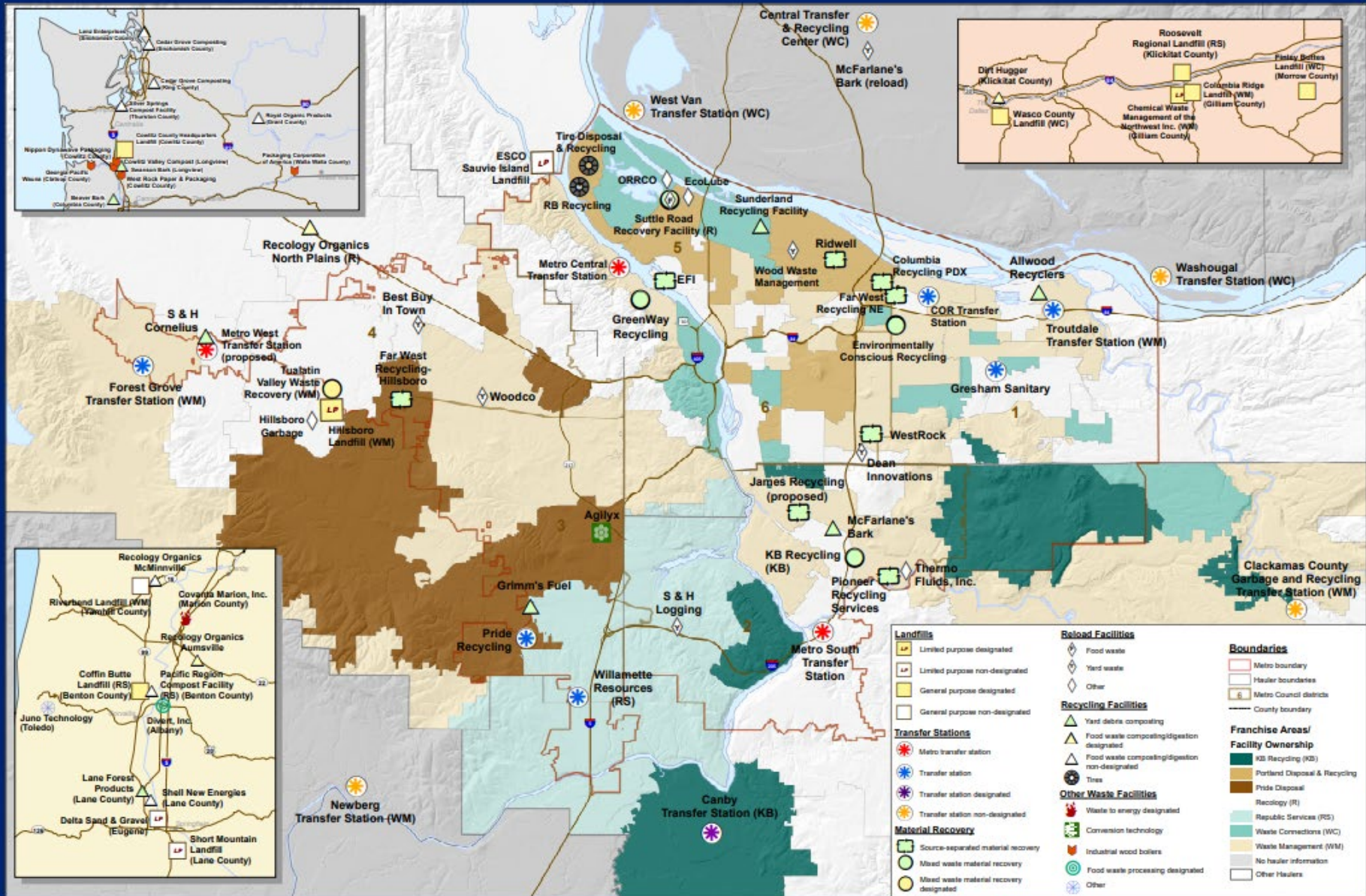
Garbage and Recycling System Overview

Regional Waste Advisory Committee

January 20, 2022

System Snapshot





Landfills	Reload Facilities	Recycling Facilities	Transfer Stations	Material Recovery	Other Waste Facilities
<ul style="list-style-type: none"> Limited purpose designated Limited purpose non-designated General purpose designated General purpose non-designated 	<ul style="list-style-type: none"> Food waste Yard waste Other 	<ul style="list-style-type: none"> Yard debris composting Food waste composting/digestion designated Food waste composting/digestion non-designated Tires 	<ul style="list-style-type: none"> Metro transfer station Transfer station Transfer station designated Transfer station non-designated 	<ul style="list-style-type: none"> Source-separated material recovery Mixed waste material recovery Mixed waste material recovery designated 	<ul style="list-style-type: none"> Waste to energy designated Conversion technology Industrial wood boilers Food waste processing designated Other

Boundaries	Franchise Areas/ Facility Ownership
<ul style="list-style-type: none"> Metro boundary Hauler boundaries Metro Council districts County boundary 	<ul style="list-style-type: none"> KB Recycling (KB) Portland Disposal & Recycling Pride Disposal Recology (R) Republic Services (RS) Waste Connections (WC) Waste Management (WM) No hauler information Other Haulers

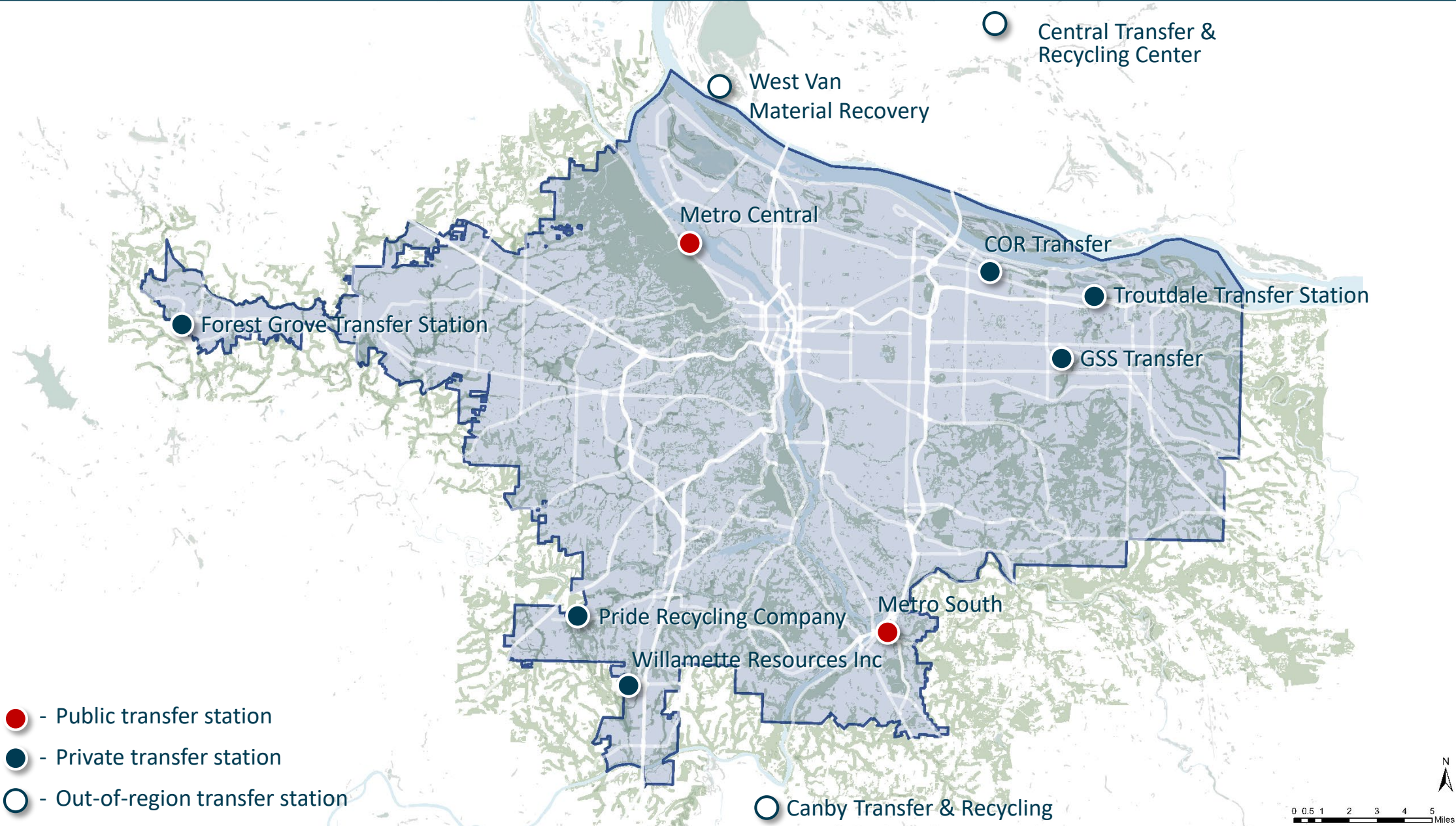
Regional Solid Waste Facilities

July 2021

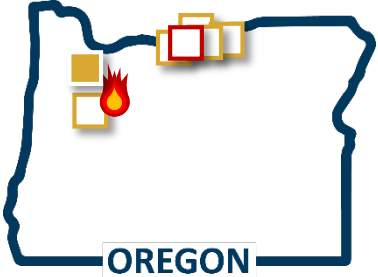
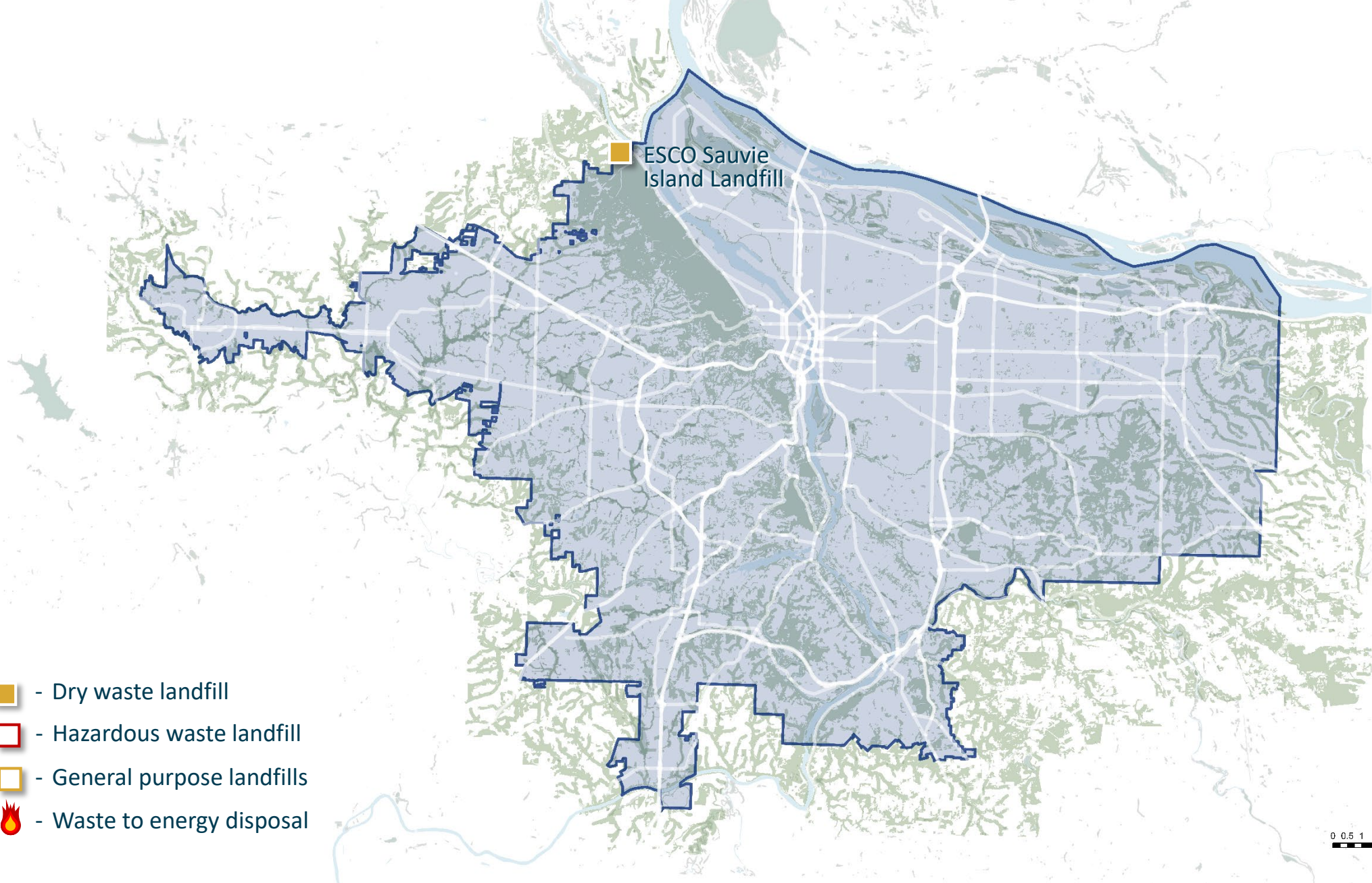
Metropolitan Area
 400 NE 10th Street, Suite 200
 Portland, Oregon 97232
 Phone: 503.281.1000
 Fax: 503.281.1001



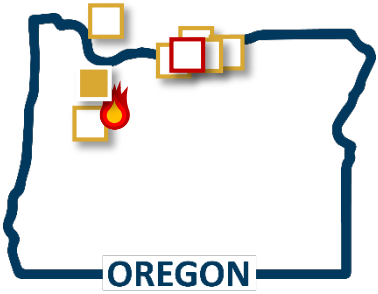
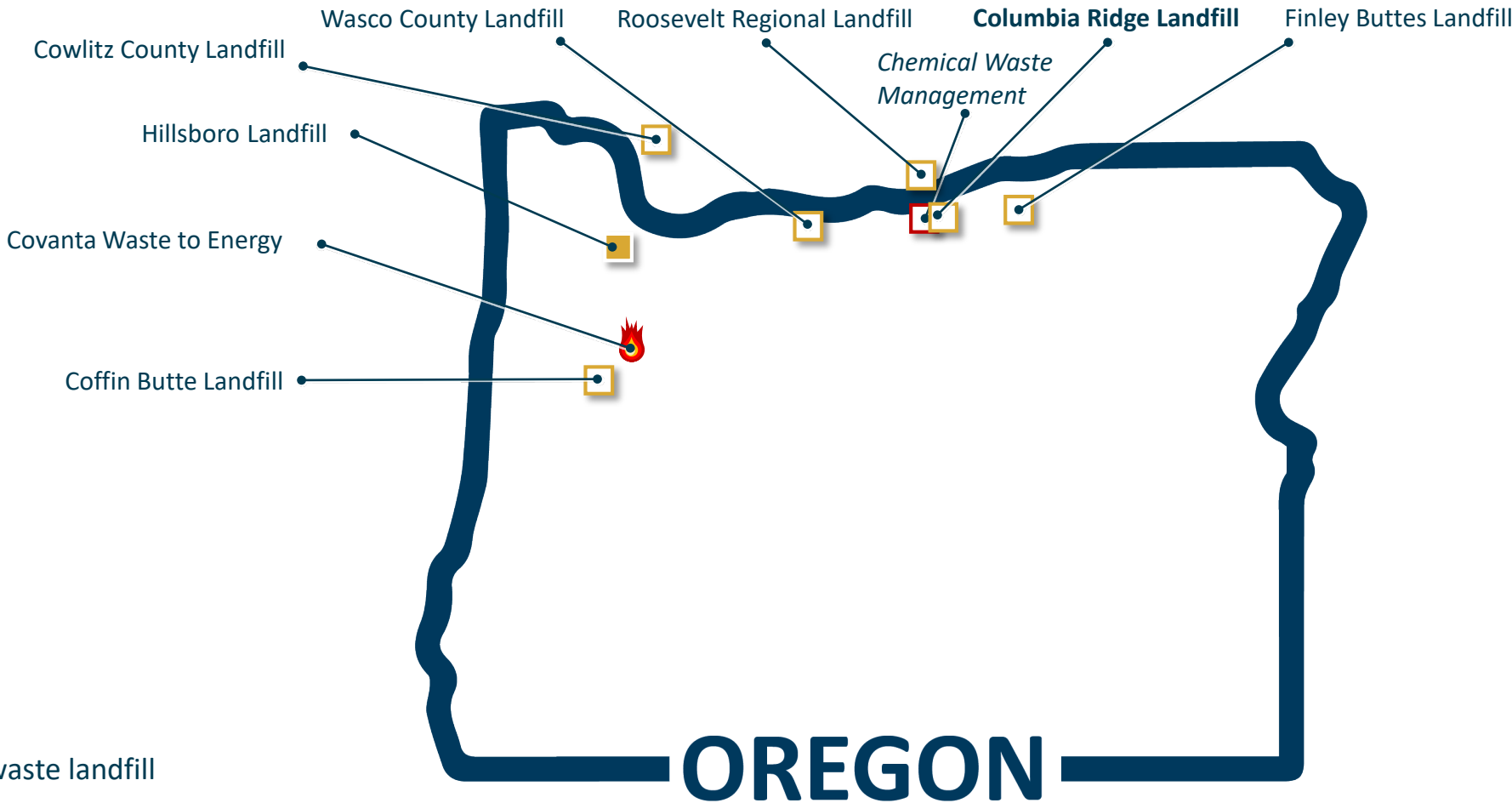
Regional Solid Waste System – Putrescible waste transfer stations







Regional Solid Waste System – Landfills

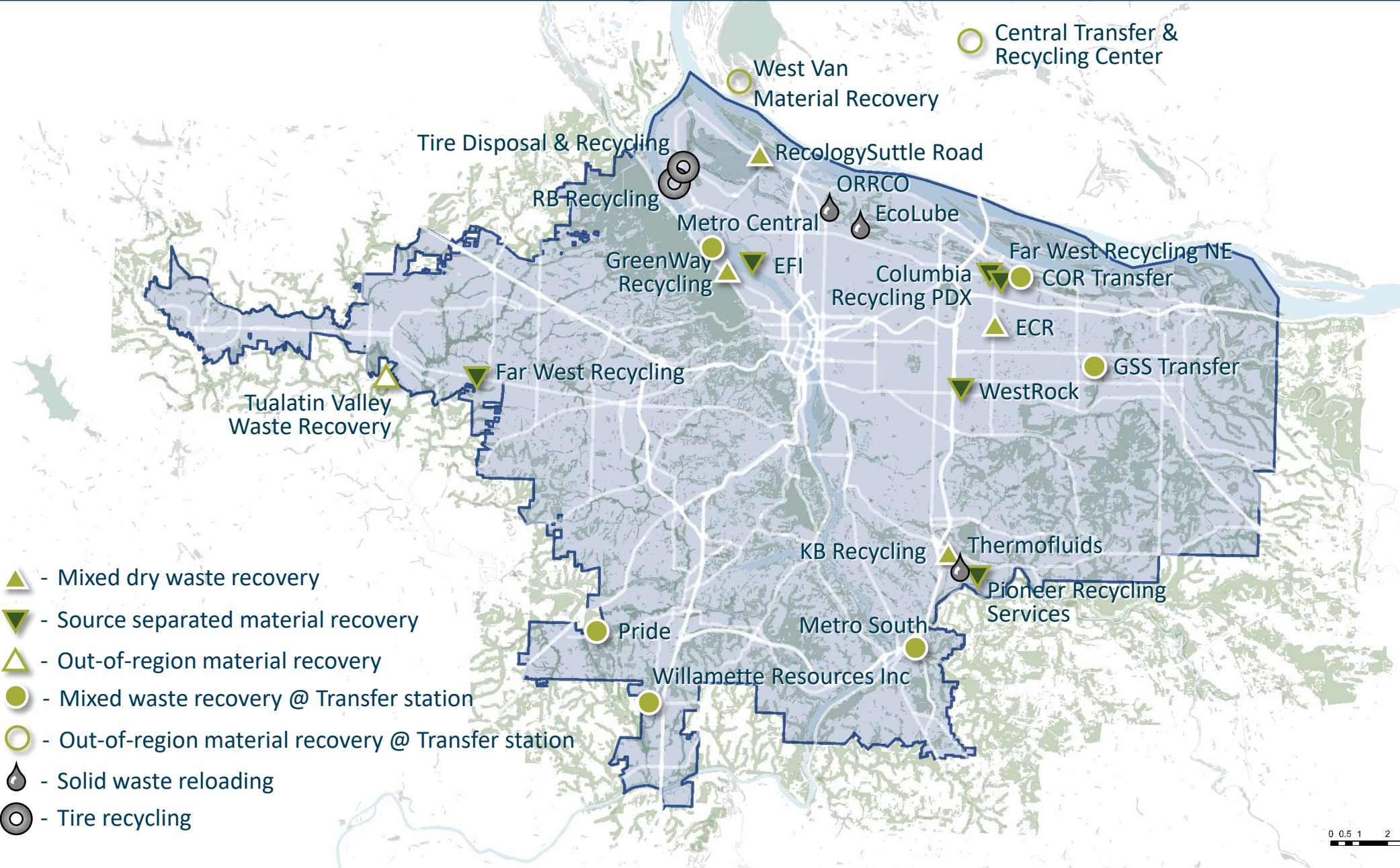


Regional Solid Waste System – Landfills & disposal sites

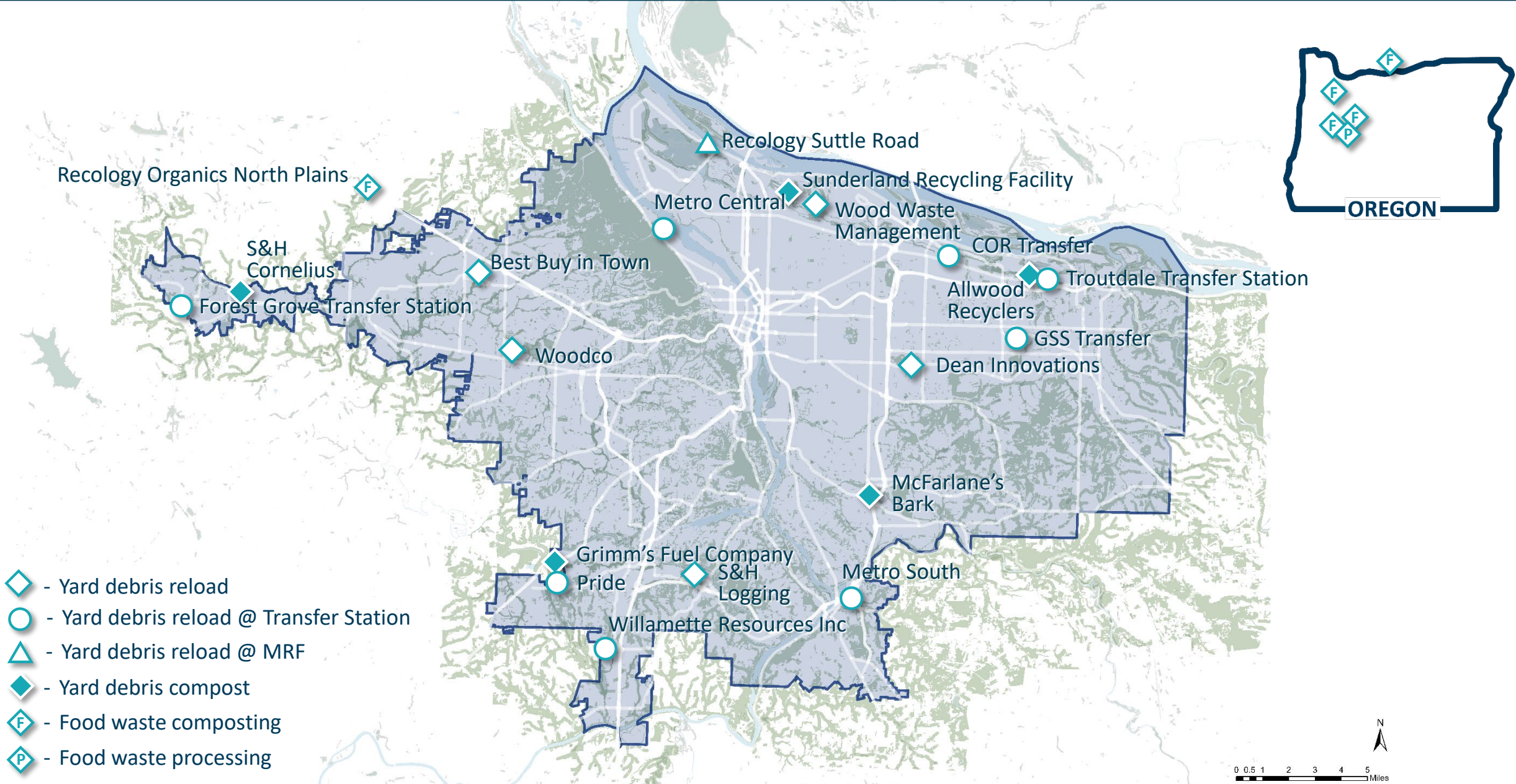


-  - Dry waste landfill
-  - Hazardous waste landfill
-  - Waste to energy disposal
-  - General purpose landfills

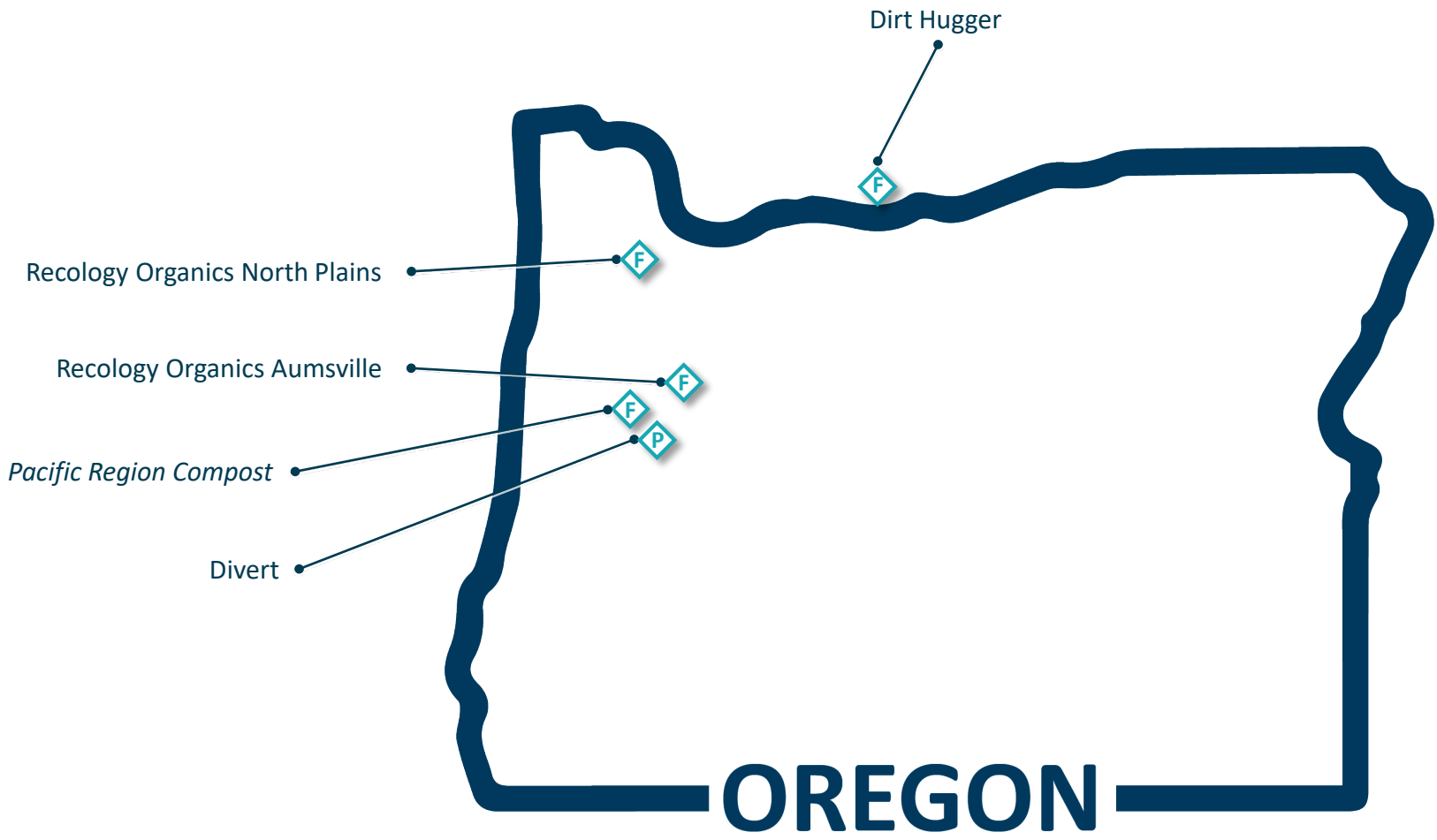
Regional Solid Waste System – Material recovery & reload facilities



Regional Solid Waste System – Compost & yard debris facilities

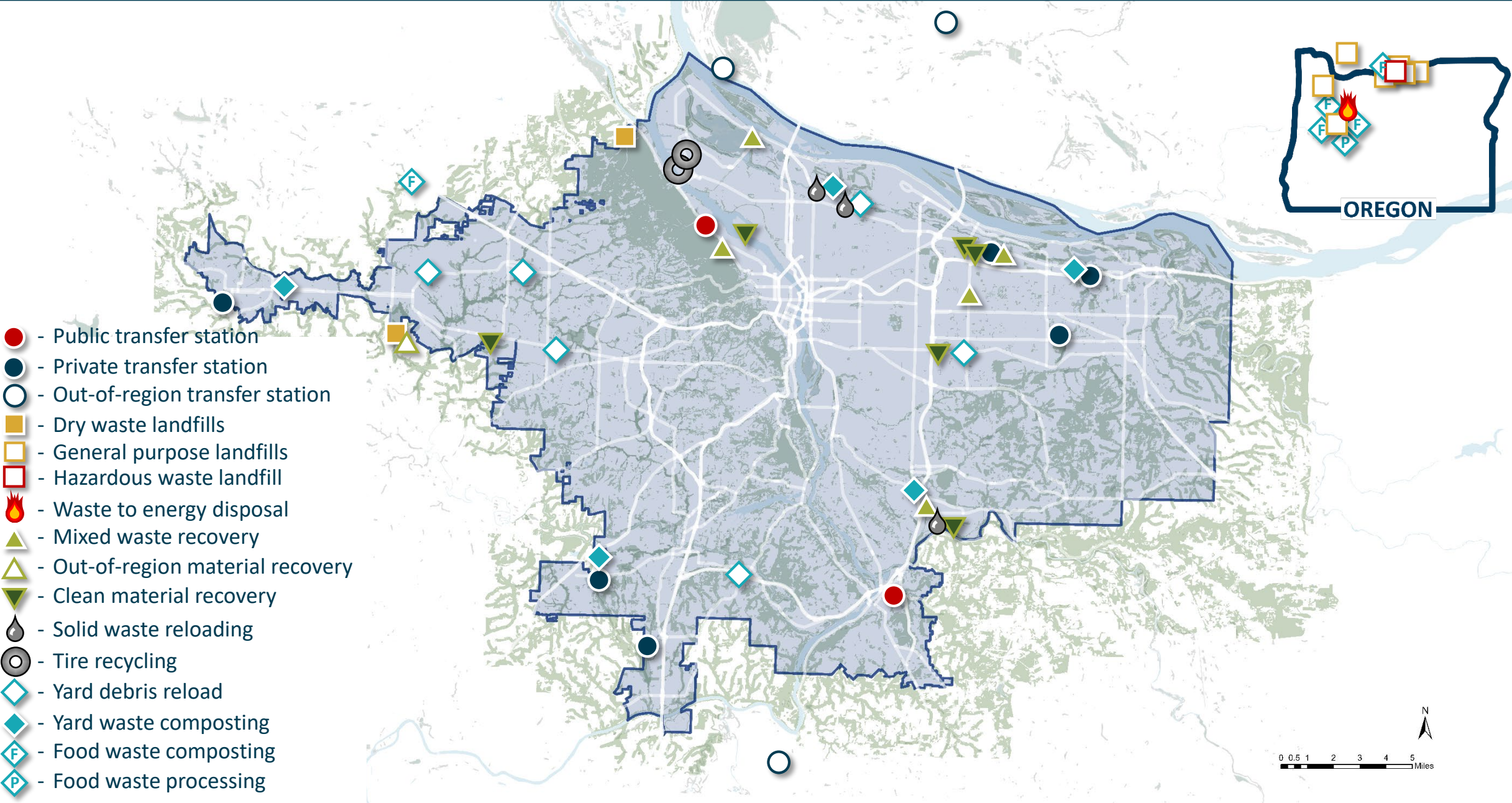


Regional Solid Waste System – Compost & food waste processing facilities



- Food waste composting
- Food waste processing

Regional Solid Waste System – January 2022



Questions?



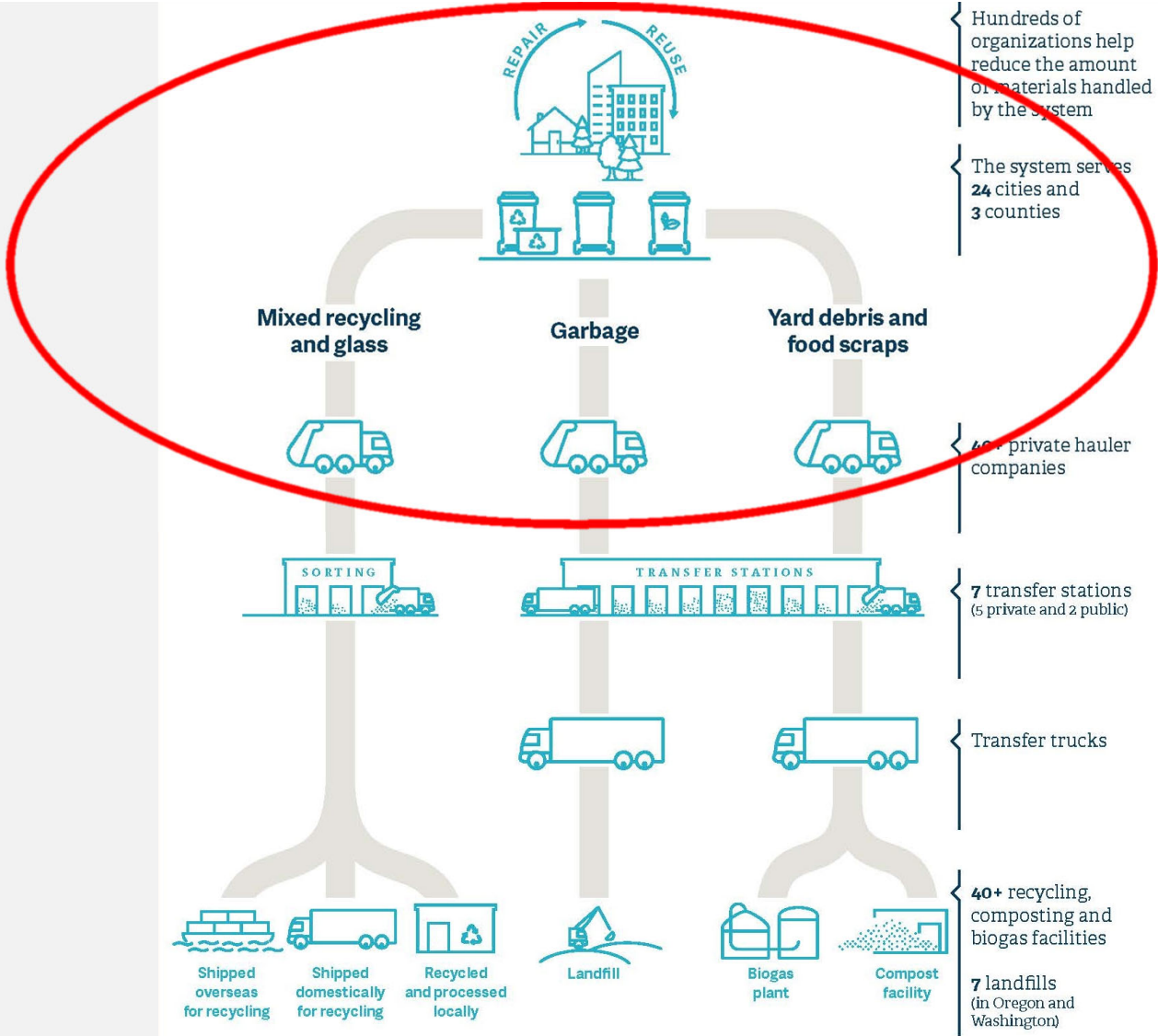
CITY AND COUNTY ROLE IN THE GARBAGE AND RECYCLING SYSTEM

Regulation and Collection

SOLID WASTE SYSTEM MANAGEMENT: WHO DOES WHAT?

- **State** sets goals and direction, conducts research, and protects air and groundwater
- **Metro** sets regional program standards, regulates where material goes after collection, owns two public transfer stations
- **Cities and counties** regulate collection
- **Garbage and recycling companies** collect material and own and operate facilities

CITIES AND COUNTIES REGULATE COLLECTION



CITY AND COUNTY REGULATORY ROLE

- Establish and enforce collection requirements (including Metro's regional service standards and State regulations)
- Franchise collection companies

NOTE: Portland commercial haulers are regulated via permits and are not franchised/rate-regulated

- Set the rates hauling companies must charge customers for garbage, recycling, and composting collection
- Support and educate system users (February RWAC)

SYSTEM USERS

COMMERCIAL

RESIDENTIAL



COLLECTION FRANCHISES

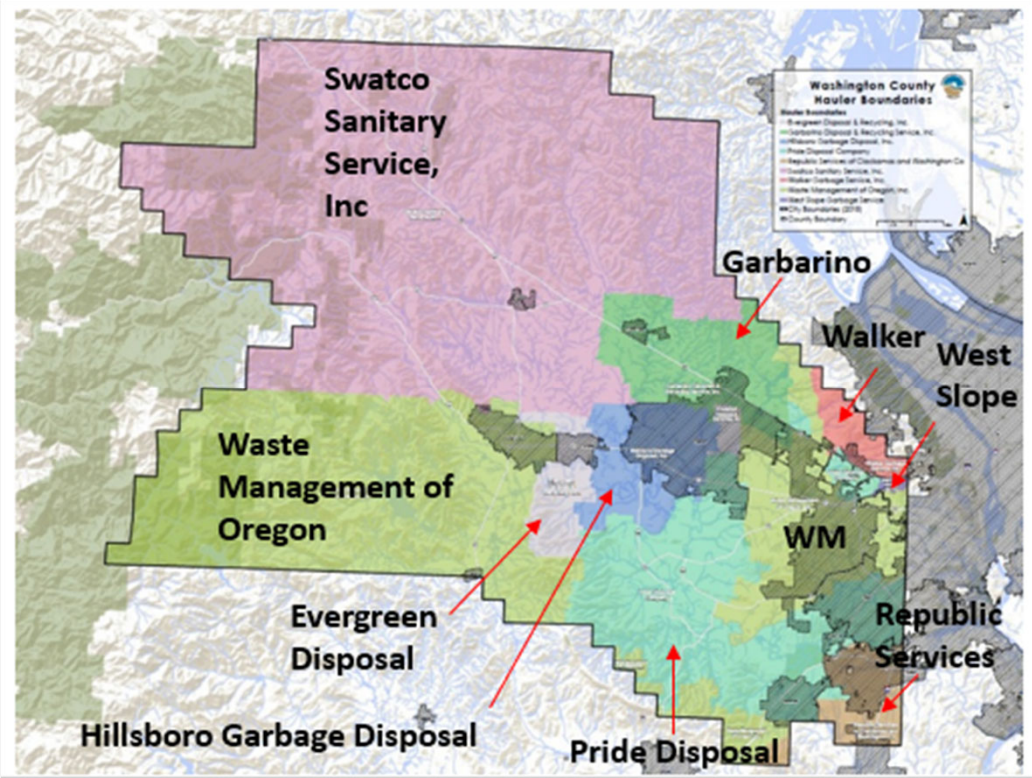
Franchises are:

- A special type of contract authorized by Oregon law for use locally
- A regulatory tool used to deliver collection service consistently and transparently

The public purposes for local franchise systems include:

- Protection of public health, safety, and welfare
- Uniform standards of service and fees - public process
- Ensures service is available to all customers
- Overall rate stability and long-term service stability
- Efficient and safe use of streets and roads
- Flexibility to meet new environmental, safety, and societal goals
- The development of robust and cost-effective recycling opportunities

EXAMPLE FRANCHISE MAP



RATES & SERVICE

**RIGHT
SIZE**
YOUR GARBAGE
CONTAINER

Choose the garbage container that fits your property's needs.



20*	GALLON Roll Cart	35	GALLON Roll Cart	60	GALLON Roll Cart	90	GALLON Roll Cart
60	POUNDS Weight Limit	85	POUNDS Weight Limit	135	POUNDS Weight Limit	175	POUNDS Weight Limit
Approximately 2	TALL Kitchen Bags	Approximately 3	TALL Kitchen Bags	Approximately 4	TALL Kitchen Bags	Approximately 5	TALL Kitchen Bags

1, 1½ and 2 yard garbage containers are also available.

*Some 20-gallon service customers will receive a modified 35-gallon roll cart.

ADVANCING EQUITY AND DIVERSITY IN WASTE COLLECTION

- Equitable service for customers
- Workforce diversity
- Opportunities for underrepresented companies

- City of Portland public waste collection contracts
- Hauler DEI plans
- Driving Diversity program

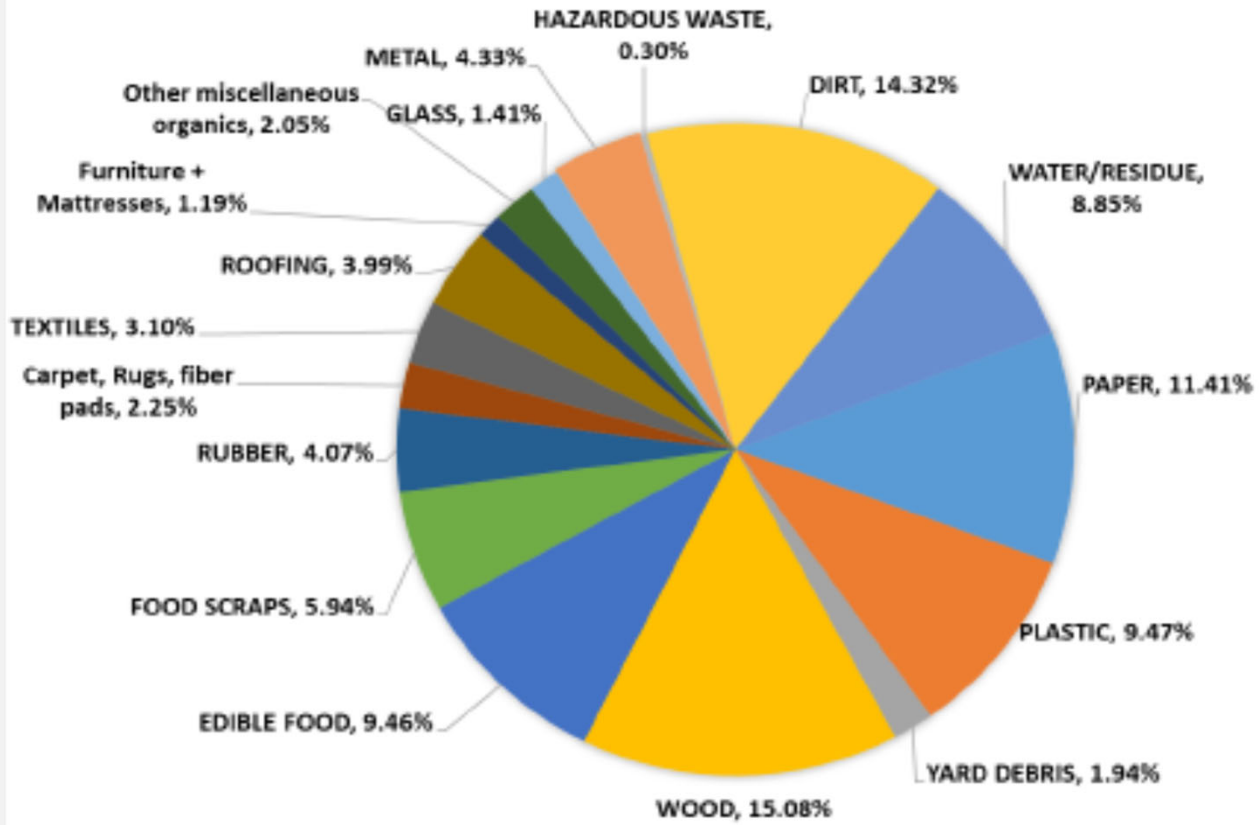


RULES & ENFORCEMENT



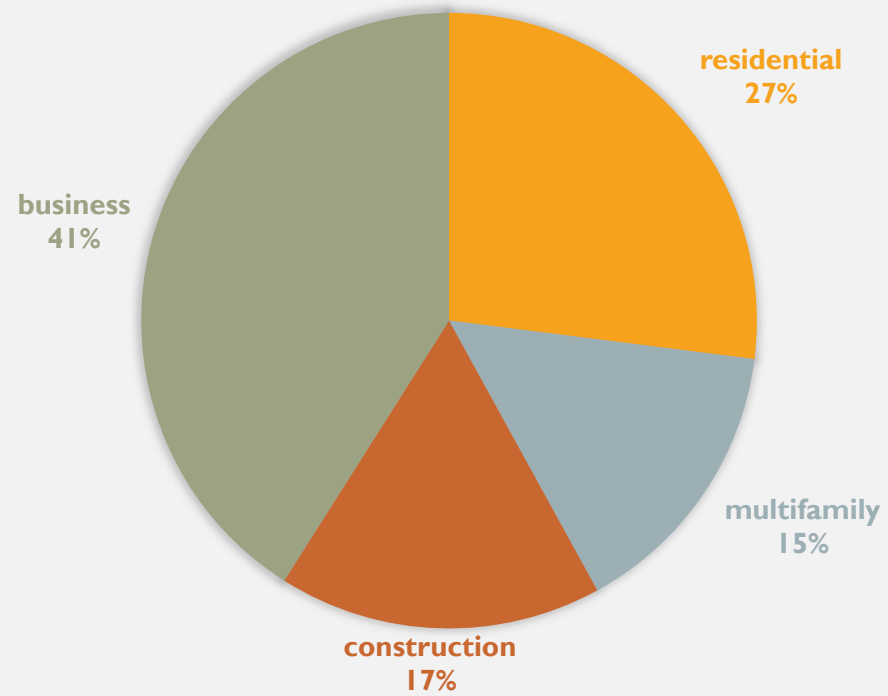
THANK YOU!

WHAT'S IN OUR GARBAGE?



DEQ Material Recovery
Generation Rates Report
2016

WASTE STREAM BY USERS



GARBAGE



MIX RECYCLING



GLASS



YARD DEBRIS



+ FOOD SCRAPS



Metro Regulatory Authority within the Solid Waste System

Regional Waste Advisory Committee
January 20, 2022



Authority

Metro derives its solid waste authority from three primary sources



The Oregon Constitution



Metro's home rule charter



State statutes (ORS chapters 268, 459, and 459A)

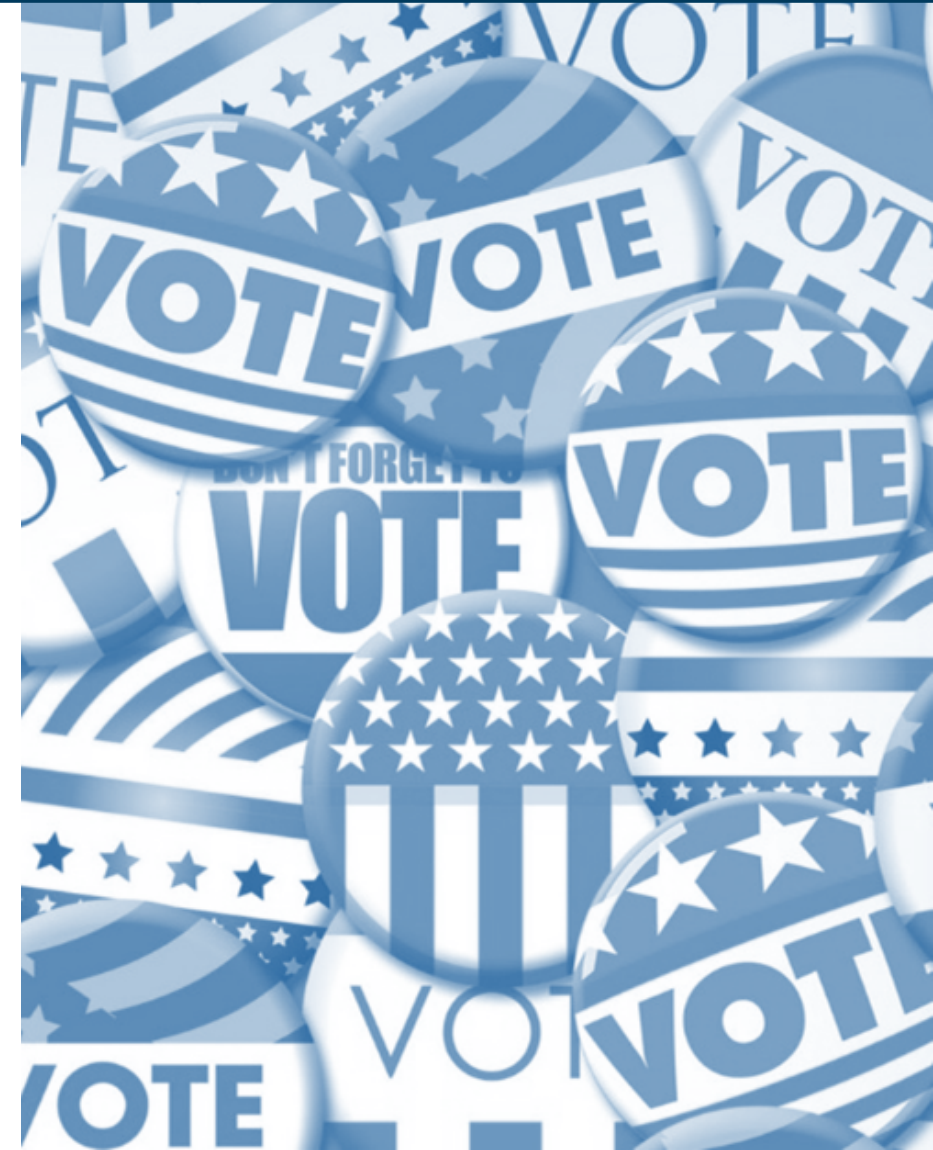
Authority

In 1991 voters amended the Oregon Constitution

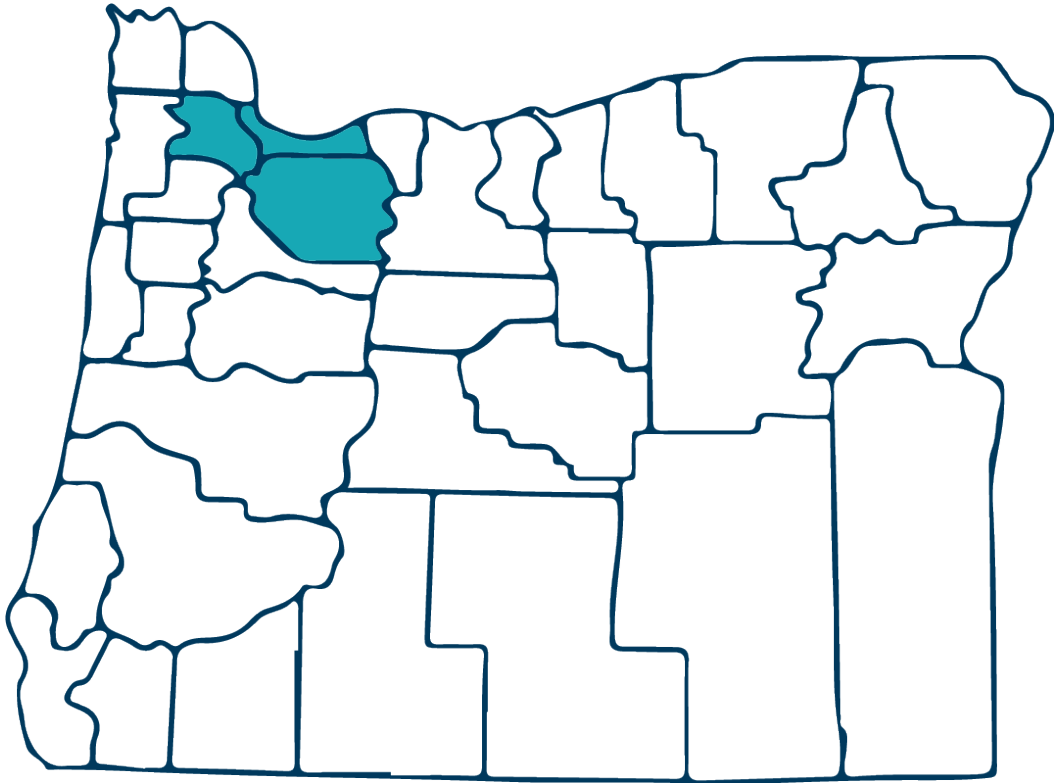
- Authorized Metro to have a home rule charter
- Gave Metro authority over:

“matters of metropolitan concern as set forth in the charter of the district”

(Article XI, Section 14)



Authority



In 1992 voters from Clackamas, Multnomah, and Washington Counties adopted a home rule charter for Metro

Before this action, Metro's regulatory authority was only in state statute

Home Rule Charter



- General authority to “dispose” of solid and liquid wastes
- Specific authority to acquire, develop, maintain and operate facilities for solid waste disposal
- Jurisdiction over any other matter of “metropolitan concern”

Home Rule Charter

It is a general powers charter giving Metro the broadest authority possible



“the powers specified within [the Charter] are not exclusive; any specification of power in the charter is not intended to limit Metro’s authority; and the powers specified in the charter are to be construed liberally.”

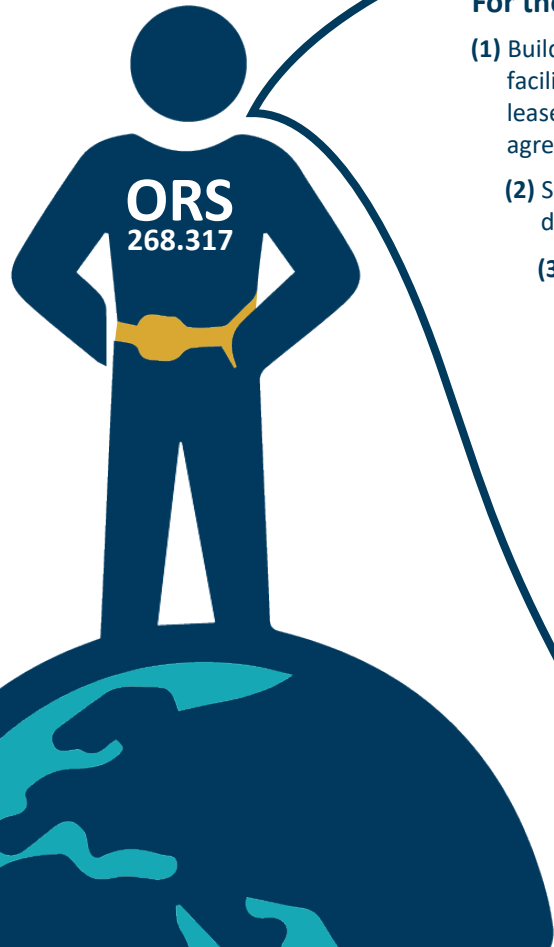
(Charter, Section 9)

Statutory Authority



- ORS Chapter 268 – governs metropolitan service districts
- ORS 268.317 – solid waste “super powers” statute

Statutory Authority “Super Power”



For the purposes of solid and liquid waste disposal, a district may:

- (1) Build, construct, acquire, lease, improve, operate and maintain landfills, transfer facilities, resource recovery facilities and other improvements, facilities or equipment necessary or desirable for the solid and liquid waste disposal system of the district. Leases authorized by this section include lease-purchase agreements. Where provided, the district may acquire ownership of the leased property at a nominal price. Such leases and lease-purchase agreements may be for a term of up to 50 years.
- (2) Sell, enter into short or long-term contracts, solicit bids, enter into direct negotiations, deal with brokers or use other methods of sale or disposal for the products or by-products of the district's facilities.
- (3) Require any person or class of persons who generate solid or liquid wastes to make use of the disposal, transfer or resource recovery sites or facilities of the district or disposal, transfer or resource recovery sites or facilities designated by the district.
- (4) Require any person or class of persons who generate, store, transport or transport solid or liquid wastes to make use of the disposal, transfer or resource recovery sites or facilities of the district or disposal, transfer or resource recovery sites or facilities designated by the district.
- (5) Regulate, license, franchise and certify disposal, transfer and resource recovery sites or facilities; establish, maintain and amend rates charged by disposal, transfer and resource recovery sites or facilities; establish and collect license or franchise fees; and otherwise control and regulate the establishment and operation of all public or private disposal, transfer and resource recovery sites or facilities located within the district. Licenses or franchises granted by the district may be exclusive. Existing landfills authorized to accept food wastes which, on March 1, 1979, are either franchised by a county or owned by a city are exempt from the district's franchising and rate regulation.
- (6) Prescribe a procedure for the issuance, administration, renewal or denial of contracts, licenses or franchises granted under subsection (5) of this section.
- (7) Regulate the service or services provided by contract, license or franchise and order modifications, additions or extensions to the equipment, facilities, plan or services as shall be in the public interest.
- (8) Receive, accept, process, recycle, reuse and transport solid and liquid wastes.

Regulate

License

Operate

Franchise

Authorize

Statutory Authority “Super Power”



- (3) Require any person or class of persons who generate solid or liquid wastes to make use of the disposal, transfer or resource recovery sites or facilities of the district or disposal, transfer or resource recovery sites or facilities designated by the district.

Statutory Authority “Super Power”



- (4) Require any person or class of persons who pick up, collect or transport solid or liquid wastes to make use of the disposal, transfer or resource recovery sites or facilities of the district or disposal, transfer or resource recovery sites or facilities designated by the district.

Statutory Authority “Super Power”



- (5) Regulate, license, franchise and certify disposal, transfer and resource recovery sites or facilities; establish, maintain and amend rates charged by disposal, transfer and resource recovery sites or facilities; establish and collect license or franchise fees; and otherwise control and regulate the establishment and operation of all public or private disposal, transfer and resource recovery sites or facilities located within the district.

Statutory Authority “Super Power”



(7) Regulate the service or services provided by contract, license or franchise and order modifications, additions or extensions to the equipment, facilities, plan or services as shall be in the public interest.

Statutory Authority

ORS Chapter 268 also recognizes the importance of Metro's home rule charter:



ORS 268.710

“In addition to any authority expressly granted to a metropolitan service district by the Legislative Assembly, a district charter is an independent grant of authority by the affected electorate[.]”

Statutory Authority

ORS Chapters 459 and 459A govern solid waste management and recycling generally but are not specific to Metro

However, they do include statutes describing Metro's authority in certain circumstances

The most important statute for purposes of Metro's authority with respect to local governments is ORS 459.095

Statutory Authority



ORS 459.095

“(1) No ordinance, order, regulation or contract affecting solid waste management shall be adopted by a local government unit if such ordinance, order, regulation or contract conflicts with ... a solid waste management plan or program adopted by a metropolitan service district and approved by the Department of Environmental Quality or any ordinances or regulations adopted under such plan or program.”

Questions?





2030 Regional Waste Plan

Measurement Framework and Progress Report

January 20, 2022

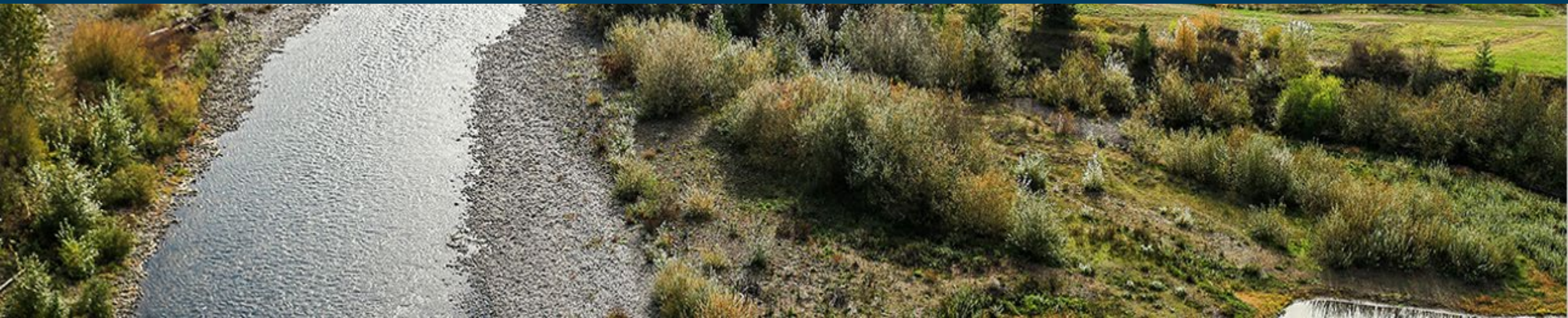
Today's Presentation

Overview of:

- Regional Waste Plan Measurement Framework
- Key areas of the Regional Waste Plan Progress Report
 - Key indicators
 - Actions status and highlights per goal area



Regional Waste Plan Measurement Framework



2030 Regional Waste Plan Measurement Framework



Measuring
progress

W2 | Metro

- Key and goal indicators and action status reports
- Indicator baselines and targets
- Progress reports:
 - ✓ Annual report on the status of actions
 - ✓ Indicator reporting at least every three years

Key and Goal Indicators Overview

Key indicators

6

Goal indicators

28

Status when plan was adopted

In progress

Investment needed

Data sources

Program data

cities | counties | Metro

State agencies

DEQ | OHA

Studies and surveys

Key and Goal Indicators Overview



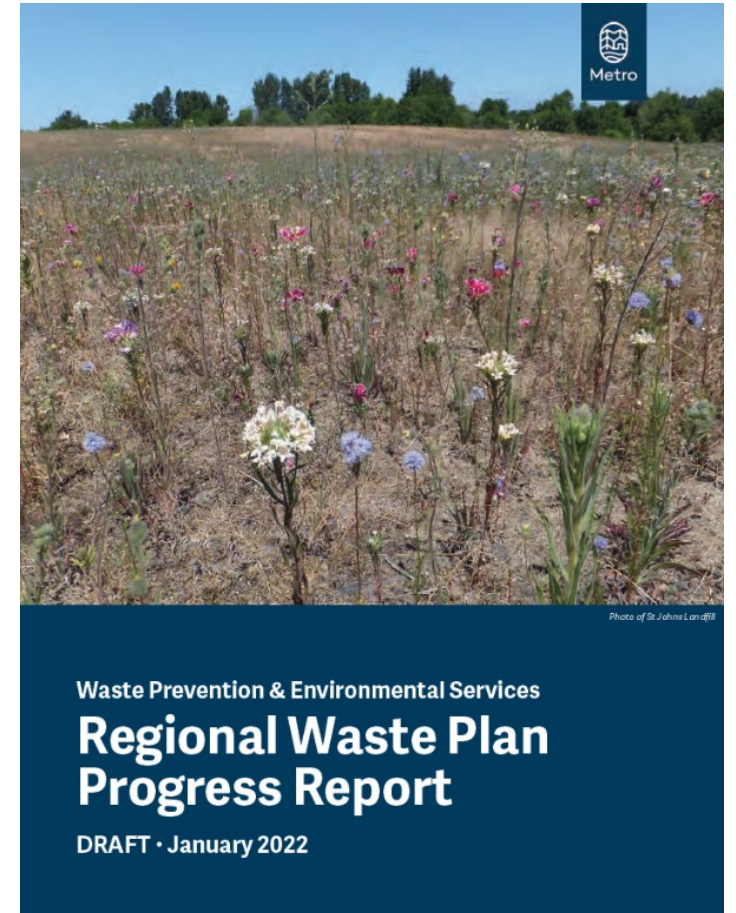


Regional Waste Plan Progress Report



2021 Progress Report Overview

- Introduction
- Key indicators
- Five goal areas:
 - Shared prosperity
 - Product design and manufacturing
 - Product consumption and use
 - Product end of life management
 - Disaster resilience





Progress Report Key Indicators

Progress Report

Key Indicators

Key Indicators demonstrate overall performance and reflect the plan's **Values**



Protect and restore the environment and promote health for all

Consumption-based greenhouse gas emissions



Conserve natural resources

Annual tons of waste generated



Advance environmental literacy

Youth reached through education programs



Foster economic well-being

Median wage for solid waste workers



Ensure operational resilience, adaptability and sustainability

Recycling contamination by sector



Provide excellent service and equitable system access

Multifamily properties with adequate service

Progress Report

Greenhouse Gas Emissions



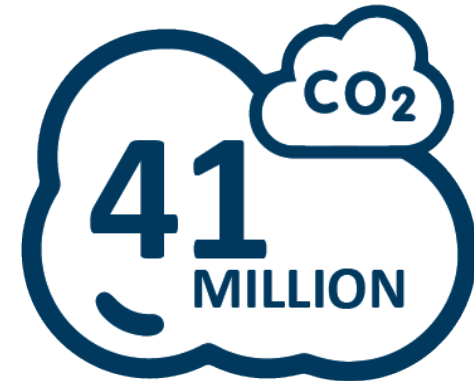
Protect and restore the environment and promote health for all

Indicator

Greenhouse gas emissions associated with the products and services consumed in the Metro region

- Full life cycle emissions of products
- Measures emissions around the world due to the region's consumption

Baseline data



Metric tons of carbon dioxide equivalent (MT CO₂e) in 2015

Progress Report

Annual Waste Generation



Conserve natural resources

Indicator Annual tons of waste generated

- Includes garbage, recycling, composting and energy recovery
- Less waste generated is linked to lower environmental impacts

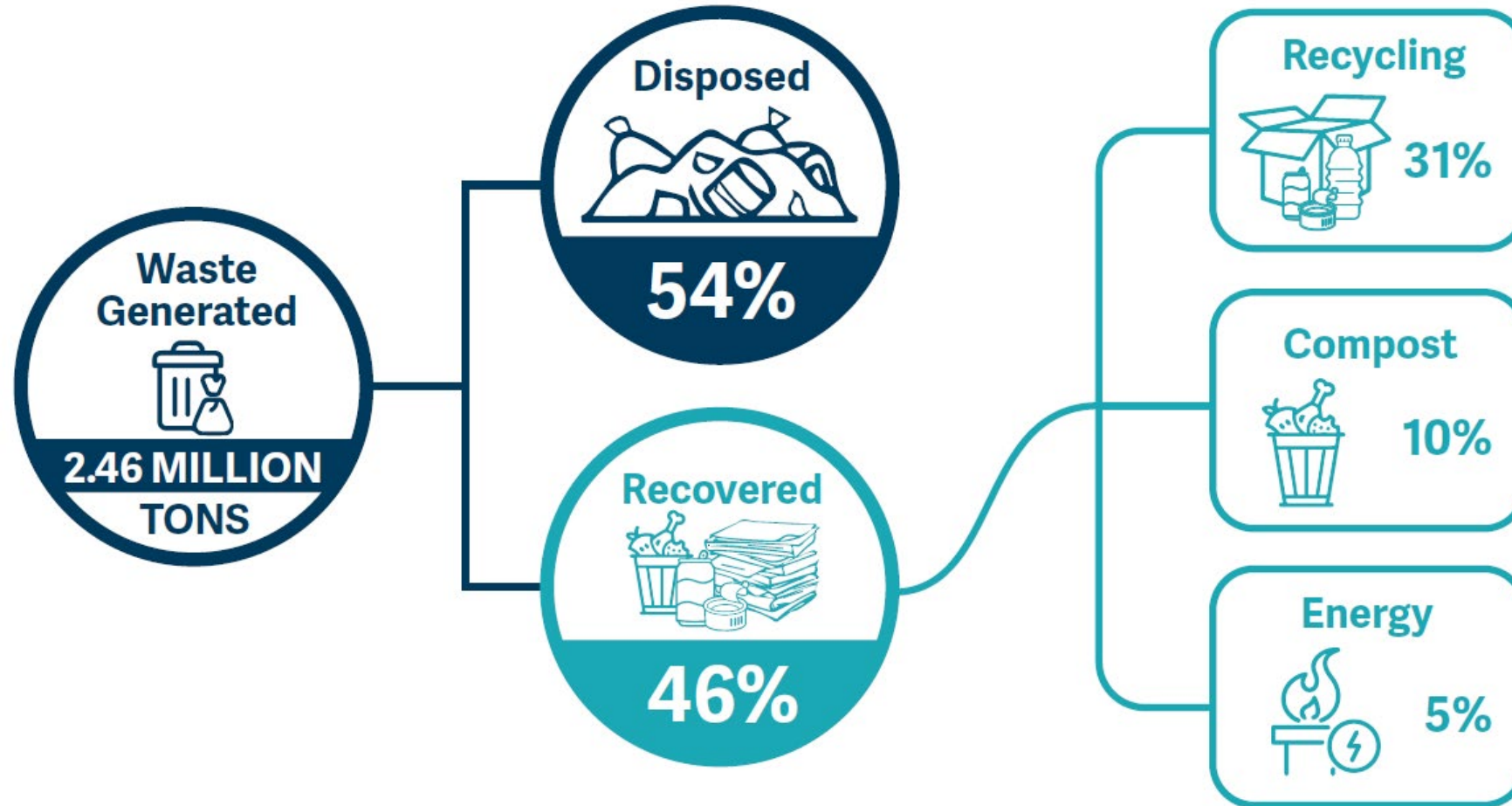
Baseline data



Annual tons of waste generated
in the Metro region in 2019

Progress Report

Annual Waste Generation



Progress Report Youth Education



Advance environmental literacy

Indicator

Number, geographic location and demographics of youth reached through education programs

- Initial focus on Clackamas County's and Metro's youth education programs
- In future years, include other city and county programs



Progress Report

Youth Education

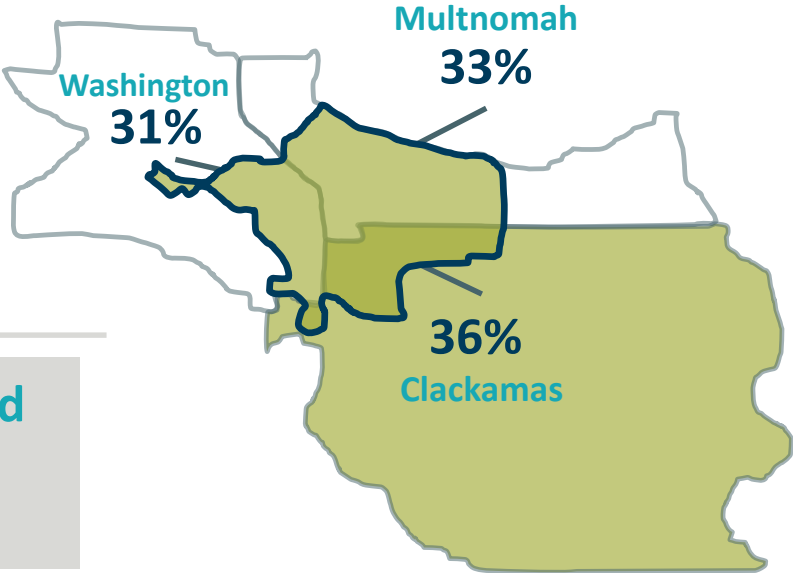
Baseline data

Youth reached during the 2018-2019 school year

37,930

Students of color
40%

Economically disadvantaged
35%



□ Metro boundary

Progress Report

Solid Waste Median Wages



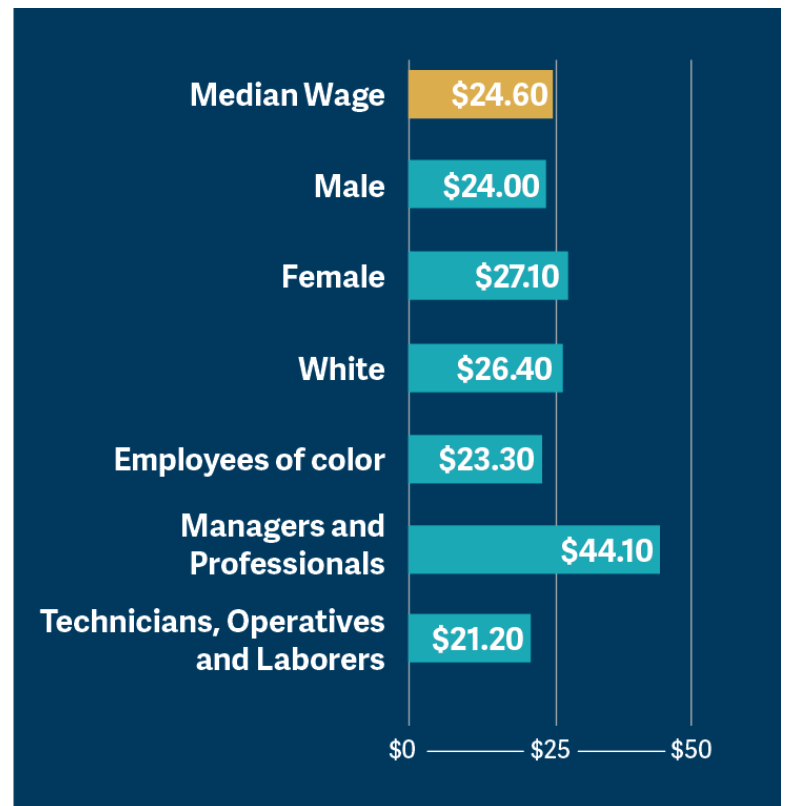
Foster economic well-being

Indicator

Median wage in the waste management industry by race/ethnicity, gender and occupation type

- Initial focus: workers employed by Metro or by Metro's transfer station contractor
- Next steps are to include workers in other sectors of the industry

Baseline data (Jan-Mar 2020)



Progress Report

Recycling Contamination



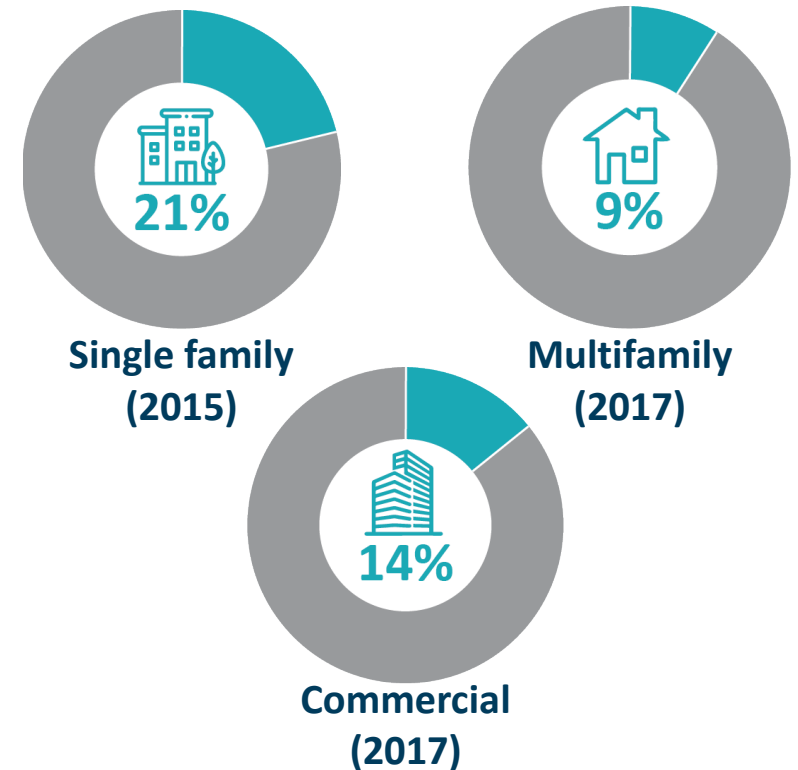
Ensure operational resilience, adaptability and sustainability

Indicator

Recycling contamination by sector

- Measures “contaminants” – items in recycling bins that are not recyclable
- Reducing contamination helps improve the quality of recyclables collected

Baseline data



Progress Report

Multifamily Service



Provide excellent service and equitable system access

Indicator

Share of multifamily communities with adequate collection services

Adequate services = Metro regional service standard or higher

Garbage



20

gallons per unit per
week

Recycling



20

gallons per unit per
week

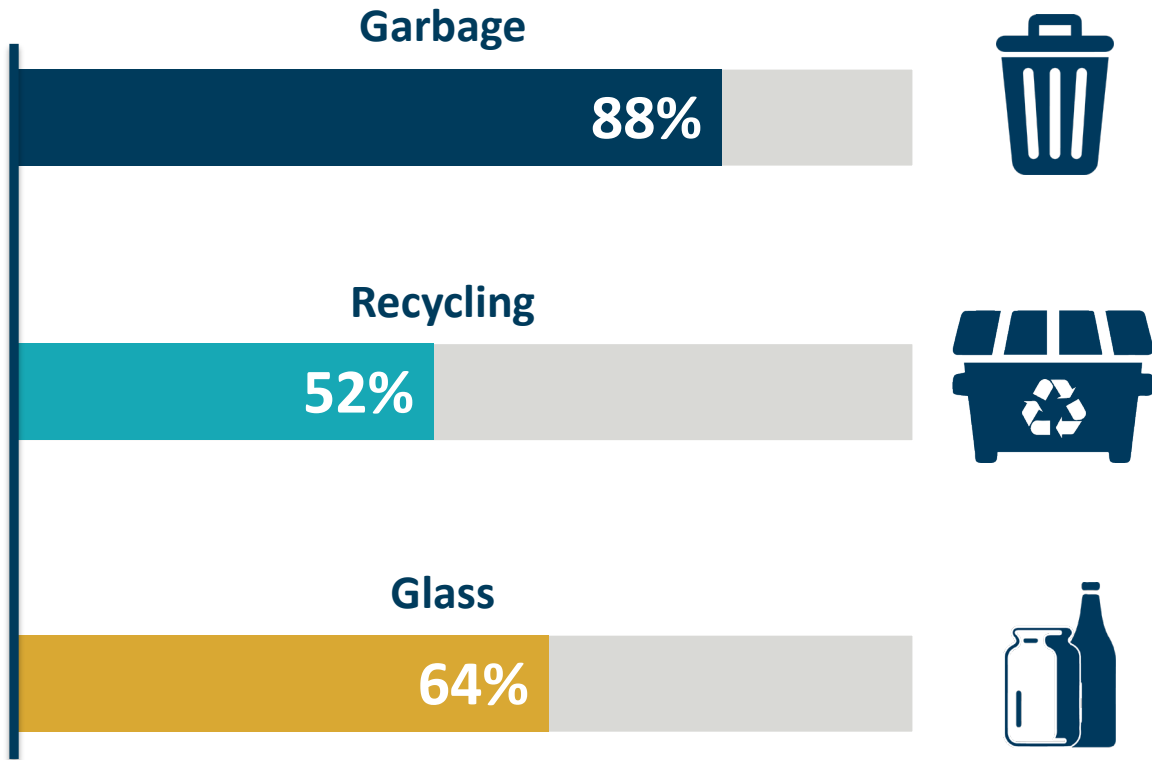
Glass



1

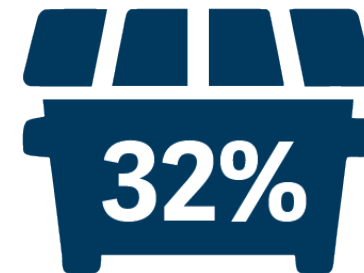
gallons per unit per
week

Progress Report Multifamily Service



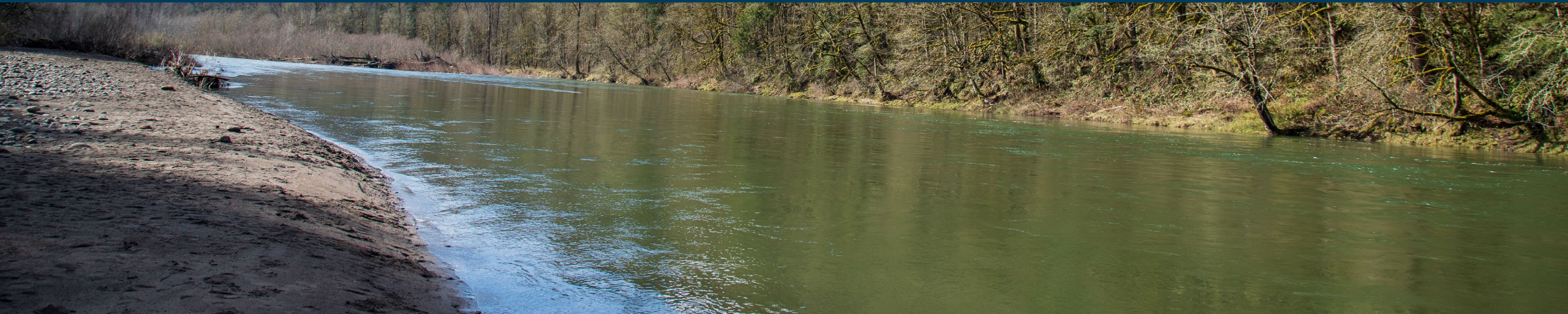
Baseline data

Multifamily properties with
adequate collection services in 2021

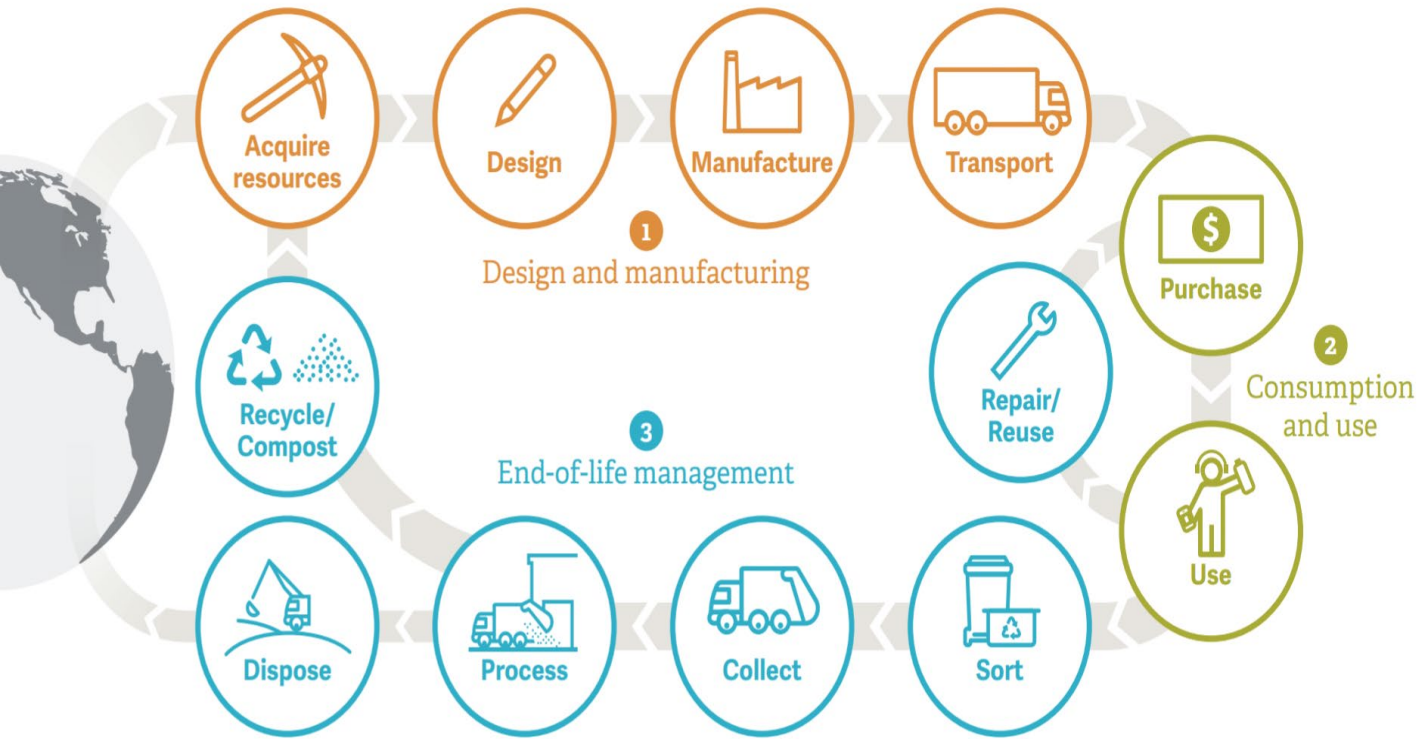




Progress Report Overview of Goal Areas



Goal Areas



Shared prosperity | Goals 1, 2, 3, 4

Foster inclusive prosperity and workforce equity.

Product Design and Consumption | Goals 5, 6, 7

Reduce environmental and health impacts of materials and advance environmental literacy.

Product End-of-Life | Goals 8, 9, 11, 12, 13, 14, 15, 16

Strengthen system of recovery and provide excellent and equitable garbage and recycling system access and service.

Disaster Resilience | Goals 17, 18, 19

Prepare for emergencies and solid waste system recovery.

Addressing the full life of products and the historical impacts of the waste system

Shared Prosperity

- Increasing representation of historically marginalized community members on advisory committees
- Building capacity of youth community based organizations to engage in leadership opportunities
- Incorporating wage standards and other good jobs provisions into policies and contracts

4 goals | 16 actions

25%

Not started

19%

In Process

56%

On-track/Completed



Product Design and Manufacturing

- Supported successful passage of Oregon Senate Bill 582 (Plastics Pollution and Recycling Modernization Act)

1 goal | 6 actions



Not started



In Process



On-track/Completed



Product Consumption and Use

- Delivering culturally responsive education on waste prevention and better purchasing choices
- Educational outreach through social media, campaigns and publications
- Preventing the wasting of food through tools and education

2 goals | 9 actions



Not started



In Process



On-track/Completed

Anaerobic digestion

The diagram, titled 'Option 1', shows a circular process: 1. Feedstocks (waste, manure, etc.) enter a digester. 2. The digester produces biogas and digestate. 3. Biogas is used for energy or converted to biomethane. 4. Digestate is used as fertilizer or compost. 5. The process also produces biofertilizer and biochar. A woman in a floral top is visible in the bottom left corner of this section.



Product End of Life Management

- Improve services to multifamily residences and collection for difficult to manage items
- Adoption of food scraps requirements
- Expanding reuse and repair opportunities
- Increased Resources for Community Cleanup Initiatives

9 goals | 62 actions

24%

Not started

13%

In Process

63%

On-track/Completed



Disaster Resilience

- Formed regional work group of the Regional Disaster Preparedness Organization (RDPO)
- Development of crisis communication plans

3 goals | 15 actions

66%

Not started

7%

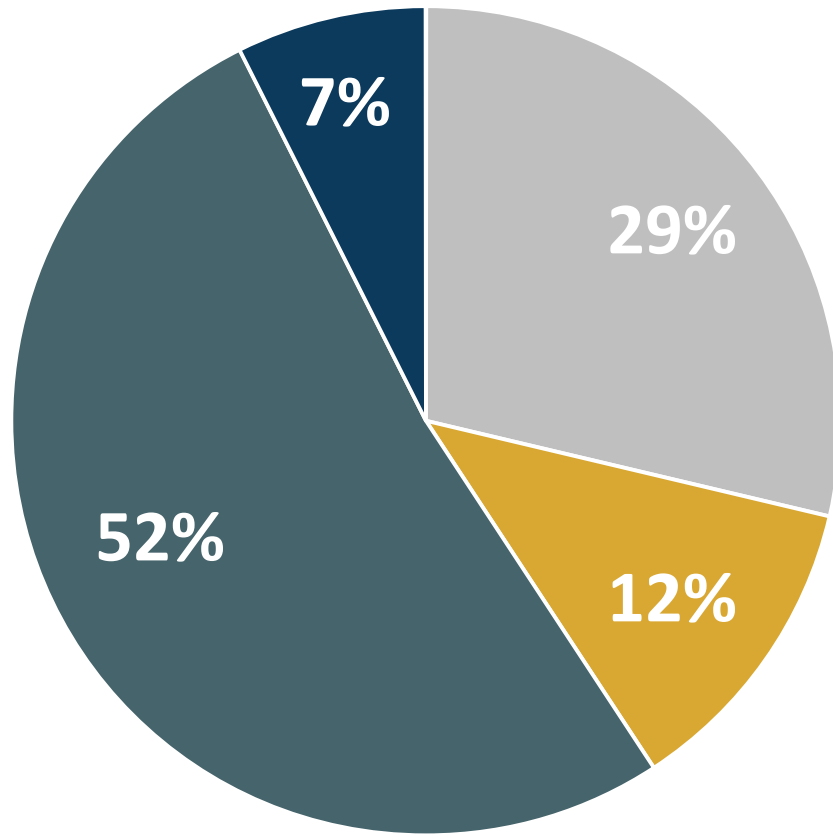
In Process

27%

On-track/Completed



Summary of progress



■ Not Started ■ In Process ■ On Track ■ Completed

Metro

2030 Regional Waste Plan

Equity, health and the environment

A scenic landscape featuring a dirt path that winds through a field of tall, golden-green grass. To the left, a dense forest of tall evergreen trees stands against a clear blue sky. In the distance, a valley with rolling hills and patches of fields is visible. Three people are walking away from the camera on the path: a man in a dark shirt and shorts, a woman in a bright yellow shirt and shorts, and a child in a green shirt and dark pants.

Questions?