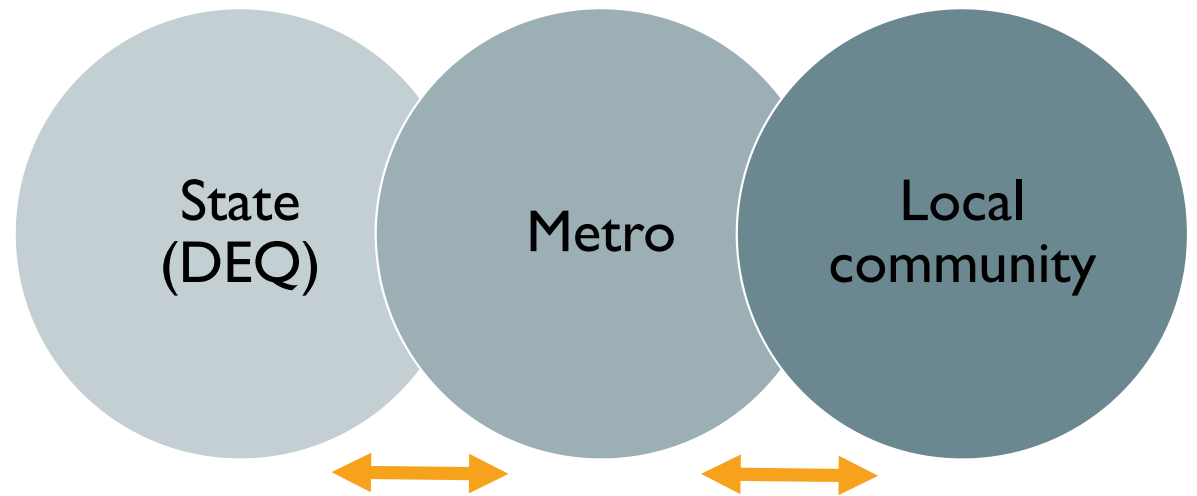




## Local Community Engagement and Outreach

# ABOUT US



AUDIENCES

# COMMUNITY



# MULTIFAMILY



# BUSINESSES & WORKPLACES



# SCHOOLS



# EVENTS





# FOCUS AREAS

# CLIMATE ACTION



REPAIR,  
REUSE AND  
SHARE



FOOD



# YOUTH ENGAGEMENT



THANK YOU!

# REGIONAL WASTE ADVISORY COMMITTEE

## Meeting Worksheet

**PRESENTATION DATE:** February 17<sup>th</sup> 2022

**TOPIC:** Garbage & Recycling System Facilities Plan

**PREPARED BY:** WILL ELDER

**PRESENTERS:** WILL ELDER

**RELATED REGIONAL WASTE PLAN GOALS:** Goal 16: Maintain a system of facilities, from smaller recycling drop-off depots to larger full-service stations, to ensure equitable distribution of and access to services

### PURPOSE OF PRESENTATION

- Share Metro's scope for the Garbage and Recycling System Facilities Plan including timeline and discuss engagement opportunities.

### BACKGROUND

On Metro Council request, WPES has been asked to produce a long term plan to identify gaps in the solid waste infrastructure needed to support the work of the Regional Waste Plan and anticipated needs over the next 15-20 year horizon. The planning process is expected to be completed in five phases from winter 2022 to spring 2023. In the last phase of the process, project staff would bring to the Metro Council a final draft of the Garbage and Recycling System Facilities Plan for Council to consider for adoption.

Plan development will include assessing the region's current public, private and non-profit garbage, recycling and reuse infrastructure, identify service gaps, and present potential approaches and a plan for future system investments. Throughout the process, the project will seek to engage all potentially affected and interested individuals, communities and organizations, as well as local governments, businesses, reuse organizations and advocacy organizations.

### PROGRESS TO DATE

- Staff presented to RWAC on the development of the scope in June and July of 2021.
- Based on early feedback from Council, staff made revisions to the scope that added the development and use of Council Values to guide the process as well as make scenario development into a discrete task.
- Staff presented the revised plan scope in January and has submitted a Resolution for adoption in early March.
- Staff will be issuing an RFP for consultant services at the end of February.

### QUESTIONS FOR CONSIDERATION/ACTIONS REQUESTED (FOR MARCH MEETING)

- Do you have any ideas around the formation of a Community Advisory Group?
- What would be ways to engage with elected officials through the plan?
- What would be ways to engage with the garbage and recycling industry through the plan?

**NEXT STEPS**

- Return in March to solicit RWAC feedback on the questions above.

**ATTACHMENTS**

Project Plan



# Garbage & Recycling System Facilities Plan

Regional Waste Advisory  
Committee  
February 17, 2022



# Presentation Overview

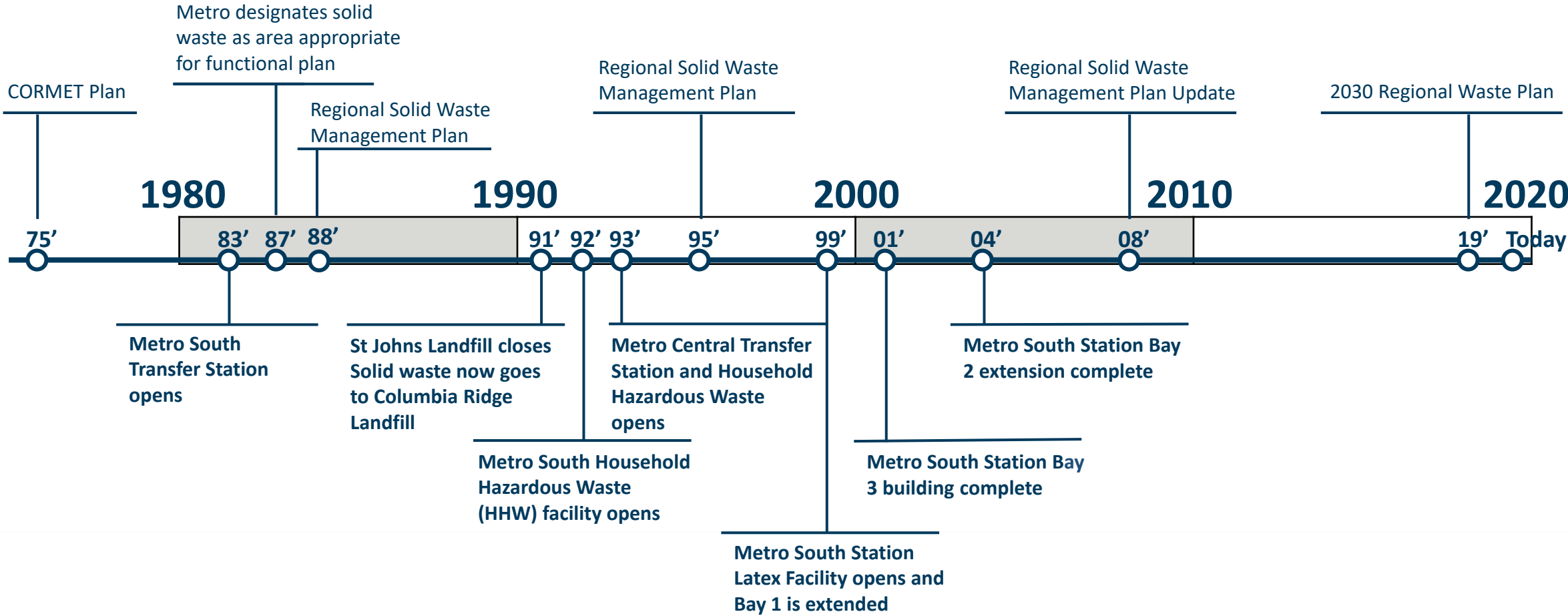
Plan Overview and History

Phases, outcomes and engagement

Next Steps

Questions and Discussion

# Metro transfer station facility history



# Garbage and Recycling System Plan Overview

An overview of the facility-based garbage, recycling and reuse services necessary for achieving the goals of the 2030 Regional Waste Plan

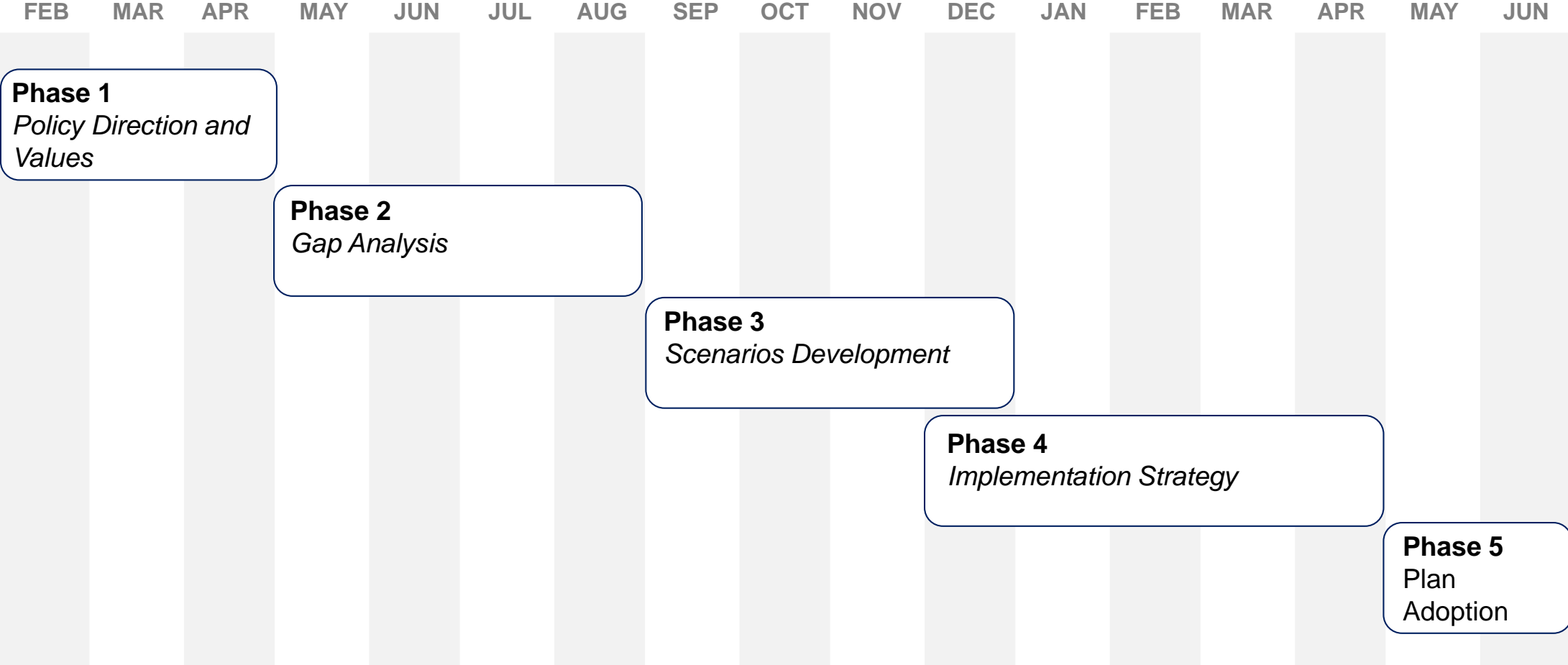
Current and anticipated gaps in those services

Alternative scenarios to fill them over the next 20 years

An implementation plan and financing options for Metro's role in advancing the plan and building new facilities



# Garbage and Recycling System Facilities Plan Development



# Phase 1 Policy Direction and Values

February 2022 – April 2022

Develop a shared understanding of existing policy guidance and commitment to values that will guide the development of the plan.

Metro Council endorses values and assumptions that will guide plan development.



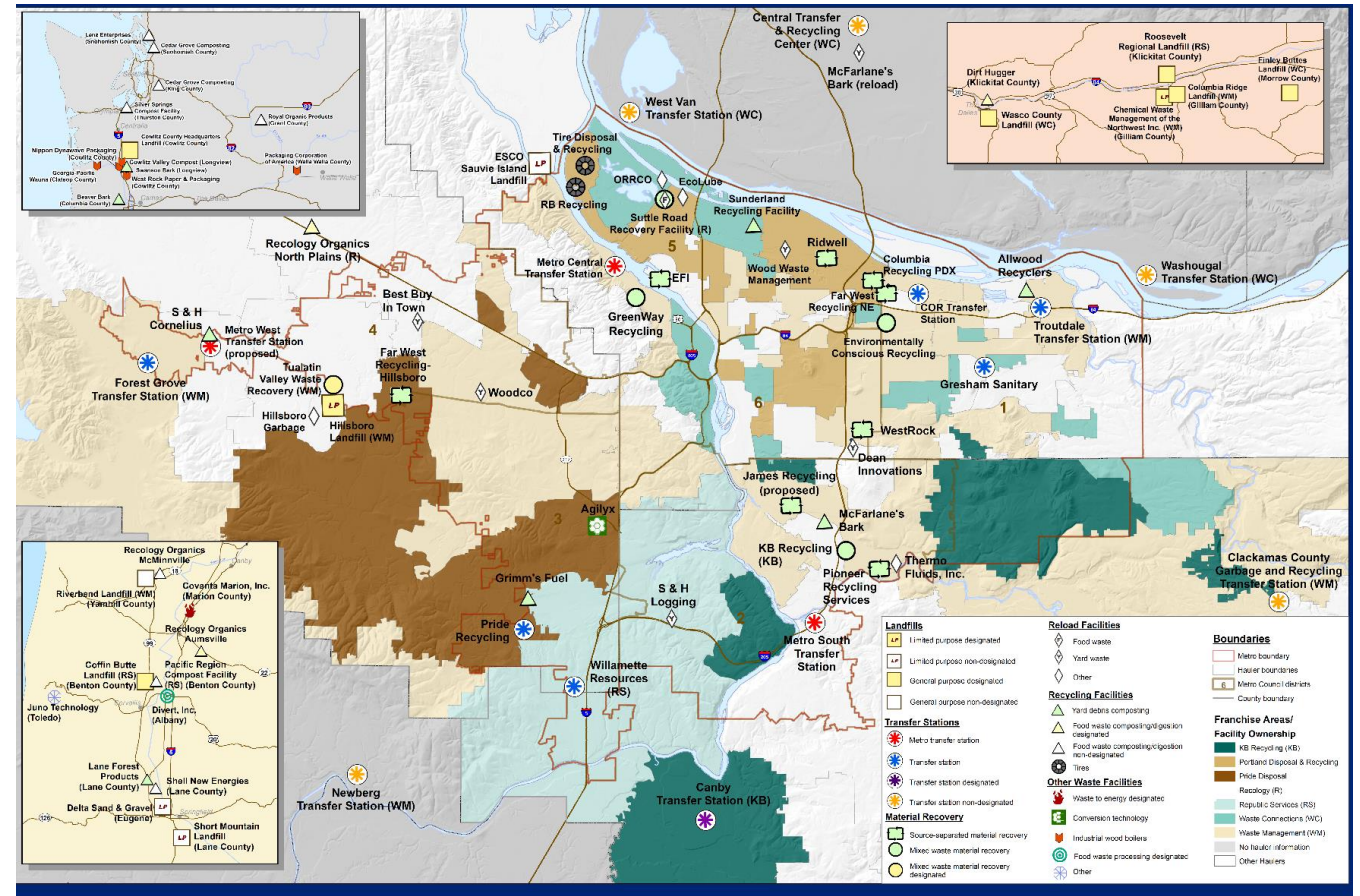
# Phase 2 Gap Analysis

May 2022 – August 2022

Identify current and future gaps in the garbage and recycling system that include public, private and non-profit facilities.

## Key questions:

- What are the different types of facilities that would best meet the gaps (large sub-regional facilities, smaller localized sites/depots, etc.)?
- How many and where these facilities should be located to best meet regional customer needs, based on racial equity, geographic and growth considerations and resiliency?
- Where are the reuse and repair services located?



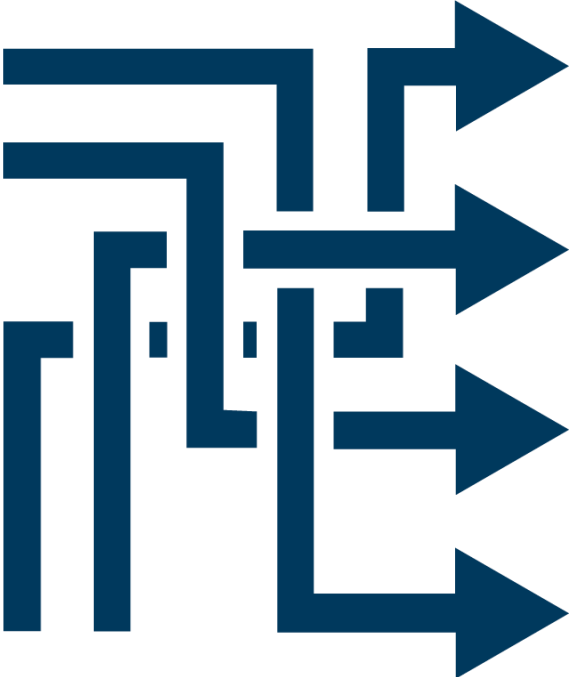
Regional Solid Waste Facilities

# Phase 3 Scenarios Development

## September 2022 – December 2022

Develop alternative future scenarios to consider tradeoffs of different paths forward and select a preferred scenario.

Metro Council endorses scenario for plan implementation.





# Phase 4 Implementation Strategy

November 2022 – April 2023

Develop an implementation strategy with facility prioritization and financing options available for public financing and incentives and policy for private and non-profit as well as measurements for success.

Metro Council endorses facility priorities and financing options for plan implementation.



# Phase 5 Plan Adoption

May 2023 – June 2023

Engage stakeholders in review of the plan and bring to the Metro Council for adoption.

Metro Council considers adoption of Garbage and Recycling System Facilities Plan.



# Roles and Engagement

## Formal bodies

- Metro Council
- Regional Waste Advisory Committee
- Committee on Racial Equity
- Metro Policy Advisory Committee

## Public engagement

- Interviews and roundtables
- Community forums
- Project website
- Online surveys



# Next steps

RFP issued at the end of February

Resolution to be adopted March 3rd

Council Values development through April

Staff returns to the March RWAC for question discussion



# Questions and Discussions

1. Do you have any ideas around the formation of a Community Advisory Group?
2. What would be ways to engage with elected officials through the plan?
3. What would be ways to engage with the garbage and recycling industry through the plan?



600 NE Grand Ave.  
Portland, OR 97232-2736  
[oregonmetro.gov](http://oregonmetro.gov)

# Garbage and Recycling System Facilities Plan

## Project Work Plan

February 2, 2022

If you picnic at Blue Lake or take your kids to the Oregon Zoo, enjoy symphonies at the Schnitz or auto shows at the convention center, put out your trash or drive your car – we’ve already crossed paths.

**So, hello. We’re Metro – nice to meet you.**

In a metropolitan area as big as Portland, we can do a lot of things better together. Join us to help the region prepare for a happy, healthy future.

**Stay in touch with news, stories and things to do.**

[oregonmetro.gov/news](http://oregonmetro.gov/news)

**Follow oregonmetro**



**Metro Council President**

Lynn Peterson

**Metro Councilors**

Shirley Craddick, District 1

Christine Lewis, District 2

Gerritt Rosenthal, District 3

Juan Carlos González, District 4

Mary Nolan, District 5

Duncan Hwang, District 6

**Auditor**

Brian Evans

600 NE Grand Ave.

Portland, OR 97232-2736

503-797-1700

# Table of Contents

Purpose and Background ..... 4

Policy Foundation and Guidance ..... 5

Project Overview ..... 6

Project Organization ..... 6

Project Work Plan ..... 8



## Purpose and Background

The purpose of this document is to outline the project work plan, including the planning process and engagement approach, for developing the Garbage and Recycling System Facilities Plan.

The Garbage and Recycling System Facilities Plan, adopted by Metro Council, will outline future infrastructure investments and services needed to fulfill the goals in the 2030 Regional Waste Plan.

The planning process will assess the region's current public, private and non-profit garbage, recycling and reuse infrastructure, identify services gaps, and present potential approaches and a plan for future system investments. Specifically, the plan will include:

1. An overview of the facility-based garbage, recycling and reuse services necessary for achieving the goals of the 2030 Regional Waste Plan,
2. The current and anticipated gaps in those services,
3. Alternative scenarios for the public, private and non-profit sectors to fill the gaps or mitigate the need to fill them over the next 20 years, and
4. An implementation plan and financing options for Metro's role in advancing the plan and building new facilities.

The scenarios may include construction of new facilities, incorporation of new services in existing facilities, and non-facility based alternatives, if practical. The scenarios will consider costs and ratepayer impacts, and will elevate the needs of communities of color and other groups historically underserved or impacted by the solid waste system. The plan resulting from this project will support strategic decision-making by Metro to deliver long-term solutions through 2030 and beyond. The plan will be completed in five phases from February 2022 to June 2023.



## Policy Foundation and Guidance

Metro has broad authority, from the Metro Charter, the Oregon Constitution, and Oregon statutes, for planning, managing and overseeing the regional solid waste system. In 1987, the Metro Council designated solid waste as an area and activity appropriate for a functional plan (Metro Ordinance 87-740), recognizing the complexity of managing this system across two dozen cities and portions of three counties, over a million residents, thousands of businesses and many solid waste service providers. This complexity demands regional coordination.

The 2030 Regional Waste Plan, adopted by the Metro Council, is the greater Portland area's long-range blueprint for managing and reducing the environmental impacts of goods consumed in the region, from production to disposal. The plan sets goals and policies for the region to reduce the amount of waste it generates, promote greater reuse and recycling of items, and manage the waste that is leftover in a manner that protects the environment and public health, gets the best value for the public's money, and advances racial equity, diversity and inclusion in the region.

This plan will build on the 2030 Regional Waste Plan to implement facility based goals and needs and will be guided by the same Values, Principles and Vision. The principles of Community Restoration and Partnership, specifically call for:

- Actively including communities that have been historically marginalized from decision-making processes,
- Equitably distributing costs and benefits, taking into account historical system impacts,
- Expanding the voice and decision-making opportunities for communities of color, and
- Supporting resilient community relationships by creating ongoing opportunities for leadership development

Specifically, this plan will advance Goal 16 of the 2030 Regional Waste Plan: Maintain a system of facilities, from smaller recycling drop-off depots to larger full-service stations, to ensure equitable distribution of and access to services. The seven actions within this goal, and others in the plan, lay the framework for the work necessary to ensure that a more equitable garbage and recycling system is in place.

## 2030 Regional Waste Plan Guidance

### Values

- Protect and Restore the Environment and Promote Health for All
- Conserve Natural Resources
- Advance Environmental Literacy
- Foster Economic Well-being
- Ensure Operational Resiliency, Adaptability and Sustainability
- Provide Excellent Service and Equitable System Access

### Principles

#### Community Restoration

Take action to repair past harms and disproportionate impacts caused by the regional solid waste system

#### Community Partnership

Develop authentic partnerships and community trust to advance the plan's vision

#### Community Investment

Emphasize resource allocation to communities of color and historically marginalized communities

## Project Overview

The Garbage and Recycling System Facilities Plan will serve as a companion document for implementing the 2030 Regional Waste Plan. From February 2022 to spring 2023, Metro will engage the public and local government partners to develop the new plan, which will be completed in five major phases.

<b>Phase 1: Policy Direction and Values</b>	Develop a shared understanding of existing policy guidance and commitment to values that will guide the development of the plan.
<b>Phase 2: Gap Analysis</b>	Identify current and future gaps in the garbage and recycling system that include public, private and non-profit facilities.
<b>Phase 3: Scenarios Development</b>	Develop alternative future scenarios to consider tradeoffs of different paths forward and select a preferred scenario.
<b>Phase 4: Implementation Strategy</b>	Metro Council endorses facility priorities and financing options for plan implementation.
<b>Phase 5: Plan Adoption</b>	Metro Council considers adoption of the Garbage and Recycling System Facilities Plan.

The project will not include detailed financial pro forma statements for filling each identified service gap, detailed estimates of the costs of implementing non-facility based actions from the 2030 Regional Waste Plan, or itemized lists of the services, staffing, equipment and specific site location of future facilities.

## Project Organization

The development of the Garbage and Recycling System Facilities Plan will involve a wide range of individuals, formal bodies and informal groups. Metro is responsible for the overall development of the plan, engaging others and adoption of the final plan.

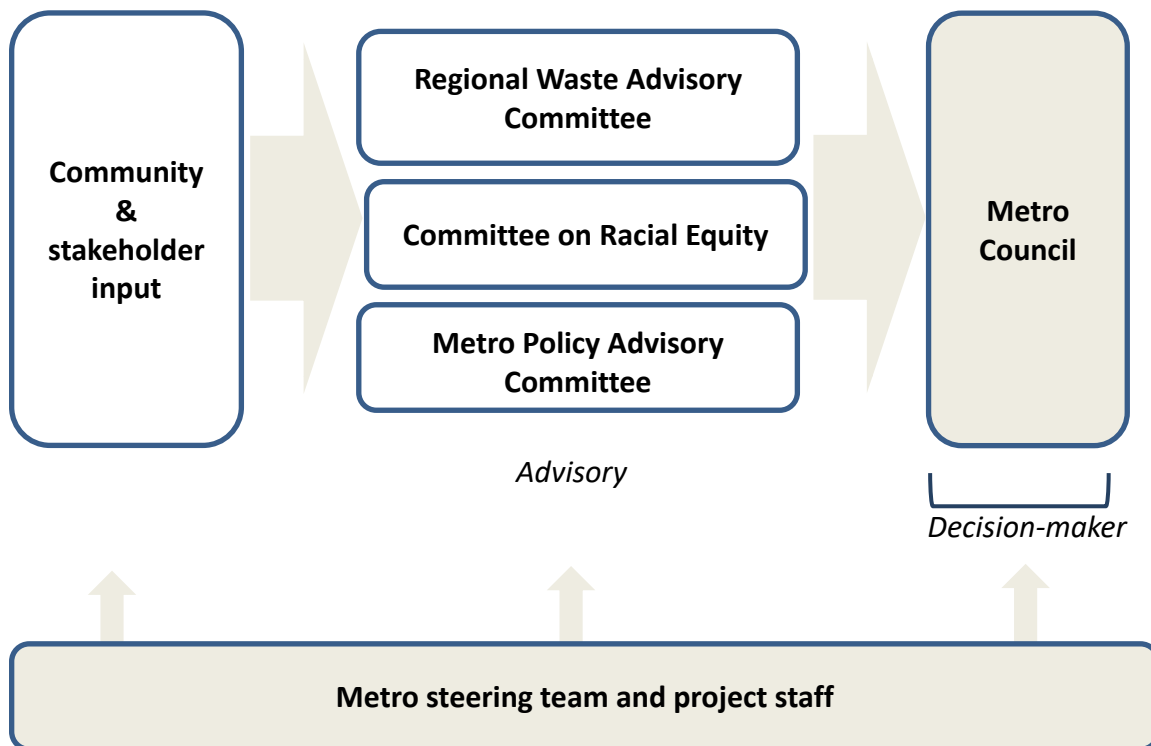
The Metro Policy Advisory Committee, Regional Solid Waste Advisory Committee and Committee on Racial Equity will provide input at key decision points. Integral to this decision-making process is providing timely opportunities for community partners and the public to provide input to these advisory committees.

The engagement efforts will seek participation of all potentially affected and interested individuals, communities and organizations. While Metro will engage the general public at large through a variety of means, particular emphasis will be placed on engaging communities of color, urban indigenous peoples and tribal nations and other communities

who may be more directly impacted by the decisions that affect the garbage and recycling system, but may have fewer opportunities to influence and shape that system.

Local governments will be engaged through Metro Council formal advisory committees, as well as through forums and other activities. Engagement will also include participation by businesses, reuse organizations and advocacy organizations.

To help develop the plan, Metro will use a combination of Metro staff and consultants. The process for selecting the consultants will encourage participation by COBID-certified firms and consultants with expertise in engaging historically-marginalized communities and developing programs and services that advance racial equity.





### Project Work Plan

The development of the Garbage and Recycling System Facilities Plan will be completed from February 2022 to spring 2023.

### Timeline for Garbage and Recycling System Facilities Plan



### Project Milestones

<b>February 2022</b>	Metro Council has understanding of project and future roles in plan development.
<b>April 2022</b>	Metro Council endorses values and assumptions that will guide plan development.
<b>August 2022</b>	Metro Council had understanding of the gap analysis and needs.
<b>December 2022</b>	Metro Council endorses scenario for plan implementation.
<b>April 2023</b>	Metro Council endorses facility priorities and financing approach for plan implementation.
<b>June 2023</b>	Metro Council considers adoption of the Garbage and Recycling System Facilities Plan.

**Objective:** Develop an understanding of existing facilities policy guidance in previous reports and plans, goals in the 2030 Regional Waste Plan that guide the management of garbage and recycling facilities and what community feedback has already been provided to understand to create a baseline for beginning the plan.

The purpose of the first phase is to review existing guidance that will guide plan development:

- A review of existing Metro Council policy guidance documents related to advancing racial equity and environmental justice, environmental sustainability and green building, disaster resilience, industrial lands, and other relevant topics.
- A review of both internal and external plans and reports that address facilities needs for direction and potential gaps and questions to be answered in Phase 2.
- A summary of Regional Waste Plan values, principles and goals that apply to the development of facility-based infrastructure and services to be used as a framework throughout the plan development.
- Capture all previous stakeholder feedback received during the development of the Regional Waste Plan related to facilities and identify any gaps that can inform the engagement and outreach strategy.
- A review of facilities plans in other jurisdictions that can guide plan development, but specifically around scenario development, implementation approach and financing options.
- Learnings, assumptions, opportunities and challenges from the Jennifer St. and Cornelius property process.
- Best practices from other jurisdictions on facility plan development.

The outcome of this phase will be a baseline of existing plans goals and feedback given related to garbage and recycling facilities, as well as Council’s direction on policy and values that will guide the development of the plan.

**Key Activities**

<b>Planning</b>	<ul style="list-style-type: none"><li>• Review and summarize existing plans and reports</li><li>• Summary of Regional Waste Plan goals related to facilities</li><li>• Summary of existing community feedback</li><li>• Summary of key findings and recommendations from other facilities plans and recent experiences</li></ul>
<b>Engagement</b>	<ul style="list-style-type: none"><li>• Discussion with Regional Waste Advisory Committee</li><li>• Discussion with Committee on Racial Equity</li><li>• Discussion with Metro Policy Advisory Committee</li><li>• Discussion with Metro Council</li><li>• Community and stakeholder engagement activities</li></ul>

**Milestones**

- Metro Council endorses values and policy direction

**Deliverables**

- Summary report of existing plans and reports
- Summary of existing community and stakeholder input
- Summary of Council's policy guidance and values

**Phase 2: Gap Analysis****May – August 2022**

**Objective:** Establish current and future gaps in the garbage and recycling system that include public, private and non-profit facilities and develop a scenario based approach to filling those gaps.

The purpose of this phase is to develop an understanding of what materials and services require a facility for collection, processing or retailing and then look at what facilities currently provide these and where gaps exist in the present and 20 years in the future.

The work in this phase includes multiple areas of analysis. First, summarizing the Metro region's existing facilities within the public-private solid waste system and how the system is currently managed, regulated, and financed. Second, identifying the facility-based services necessary to achieve the goals of the 2030 Regional Waste Plan, including a review of all Regional Waste Plan goals that address facilities, as well as Senate Bill 582 and other policies. Third, identifying gaps related to managing materials prioritized in the Regional Waste Plan; considering hard to collect or recycle materials, current and potential end markets for materials, advancing racial equity, diversity, and inclusion principles outlined in the Regional Waste Plan, as well as resiliency; ensuring services are geographically distributed throughout the region; and preparing for regional and sub-regional population growth.

When looking into the future, some amount of visioning will be required, especially around current and future policy and how it plays into the development of facilities. The analysis will also be data- and spatially-driven, focusing on current facilities and existing gaps in the services they provide and highlighting who benefits and who is left out or burdened in the region. A close examination of how filling these gaps may impact communities both positively and negatively will be included in this phase.

Key questions will include:

- What are the different types of facilities that would best meet the gaps (large sub-regional facilities, smaller localized sites/depots, etc.)?
- How many and where these facilities should be located to best meet regional customer needs, based on racial equity, geographic and growth considerations and resiliency?
- Where are the reuse and repair services located?

During this phase, community and stakeholders will be engaged through a variety of approaches ranging from surveys, listening sessions, roundtables and workshops to collect input on needs and guidance.

### Key Activities

<b>Planning</b>	<ul style="list-style-type: none"> <li>• Develop list of material and services to use in gap analysis</li> <li>• Establish spatial criteria for gap analysis</li> <li>• Identify current and future land use trends</li> </ul>
<b>Engagement</b>	<ul style="list-style-type: none"> <li>• Engage community and stakeholders to provide input on needs and gaps</li> <li>• Discussion with Regional Waste Advisory Committee</li> <li>• Discussion with Committee on Racial Equity</li> <li>• Discussion with Metro Policy Advisory Committee</li> <li>• Discussion with Metro Council</li> </ul>
<b>Milestones</b>	<ul style="list-style-type: none"> <li>• Metro Council reviews gap analysis</li> </ul>
<b>Deliverables</b>	<ul style="list-style-type: none"> <li>• Community engagement summary</li> <li>• Gap analysis report</li> </ul>

## Phase 3: Scenarios Development September – December 2022

**Objective:** Develop a preferred scenario for future system investments.

This includes developing a set of alternative scenarios to identify tradeoffs or balance in terms of the policy direction and values developed in Phase 1. This phase will include engagement of interested persons from communities of color and other marginalized communities, along with representatives of local governments, the garbage and recycling industry and the reuse sector, in a variety of different forums to outline up to three potential scenarios for how the region’s garbage and recycling system might look in the future and what it could achieve.

### Key Activities

<b>Planning</b>	<ul style="list-style-type: none"> <li>• Develop outcome based scenarios for filling gaps</li> </ul>
<b>Engagement</b>	<ul style="list-style-type: none"> <li>• Engage community and stakeholders to provide input on the scenarios</li> <li>• Discussion with Regional Waste Advisory Committee</li> <li>• Discussion with Committee on Racial Equity</li> <li>• Discussion with Metro Policy Advisory Committee</li> <li>• Discussion with Metro Council</li> </ul>
<b>Milestones</b>	<ul style="list-style-type: none"> <li>• Metro Council endorses a preferred scenario</li> </ul>



**Deliverables**

- Community input summary
- Scenario approaches to be used in filling facilities gaps

**Phase 4: Implementation Strategy****November 2022 – April 2023**

**Objective:** Develop an implementation strategy with facility prioritization and financing options available for public financing and incentives and policy for the private and non-profit sectors, as well as measurements for success.

A framework to prioritize facility investments will be developed with Metro Council. Staff will also review with Council funding mechanisms available for any facilities best suited for public ownership and how Metro could approach private and non-profit ownership. Indicators will be developed to measure success of the plan’s implementation over time and how those will be tracked and shared.

A tool kit will be developed for siting facilities that will include a current list of policies and other considerations to be used in siting and development, such as Capital Asset Management Plans, sustainability plans, C2P2 goals, and resiliency plans.

The outcome of this phase will be a prioritization list with finance options and other resources available to implement them, such as policy and incentives.

**Key Activities**

<b>Planning</b>	<ul style="list-style-type: none"> <li>• Gap prioritization</li> <li>• Development of financing and other tools available to implement plan</li> <li>• Toolkit for siting and developing facilities</li> <li>• Indicators and reporting on plan’s success</li> </ul>
<b>Engagement</b>	<ul style="list-style-type: none"> <li>• Discussion with Regional Waste Advisory Committee</li> <li>• Discussion with Committee on Racial Equity</li> <li>• Discussion with Metro Policy Advisory Committee</li> <li>• Present prioritization list and finance options to Metro Council</li> </ul>
<b>Milestones</b>	<ul style="list-style-type: none"> <li>• Metro Council endorses priorities and understands options for financing and incentives for plan implementation</li> </ul>
<b>Deliverables</b>	<ul style="list-style-type: none"> <li>• Facilities prioritization list</li> <li>• Finance options</li> <li>• Implementation Toolkit of siting considerations</li> <li>• Indicators and measurement for plan success</li> </ul>

**Objective:** Engage stakeholders in review of the plan and bring to the Metro Council for adoption.

The purpose of this phase is to draft the plan based on the findings and guidance and present the plan to key decision-makers and the community for review.

**Key Activities**

<b>Planning</b>	<ul style="list-style-type: none"><li>• Draft plan and technical documentation</li></ul>
<b>Engagement</b>	<ul style="list-style-type: none"><li>• Release plan for public comment</li><li>• Discussion with Regional Waste Advisory Committee</li><li>• Discussion with Committee on Racial Equity</li><li>• Discussion with Metro Policy Advisory Committee</li><li>• Metro Council reviews and considers plan for adoption</li></ul>
<b>Milestones</b>	<ul style="list-style-type: none"><li>• Metro Council considers adopting the Garbage and Recycling System Facilities Plan</li></ul>
<b>Deliverables</b>	<ul style="list-style-type: none"><li>• Community input report</li><li>• Draft plan</li><li>• Final adopted plan</li></ul>



Metro



# Metro Disaster Debris Projects

February, 2022

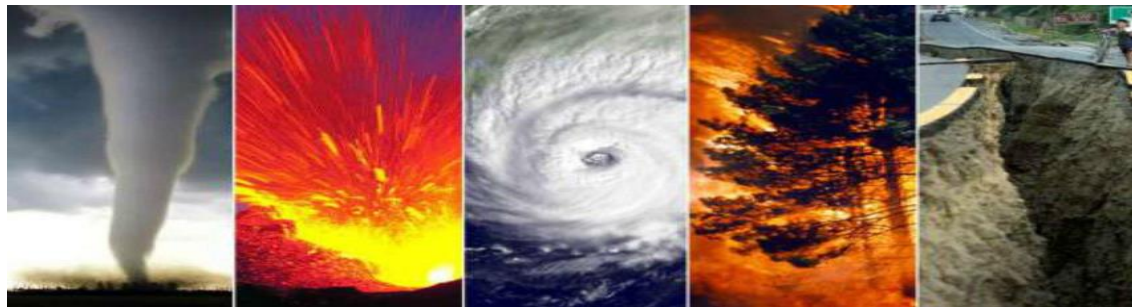
# 2030 Regional Waste Plan

## Resilience & Preparedness Goals

- Goal 17: Effectively coordinate public and private partners in planning for the impact of disasters on the solid waste system.
- Goal 18: Ensure routine garbage and recycling collection, processing, transport and disposal operations can be restored quickly following a system disruption.
- Goal 19: Plan disaster debris response operations to expedite the clearance and removal of debris, making the best use of locally-based services and materials and maximizing recovery.

# Two current Metro projects

- Disaster debris MOUs (memoranda of understanding) project
- Disaster debris fund project



# MOUs project

- Proposed: Metro will negotiate memoranda of understandings (MOUs) with cities and counties in the region to address roles and clarify responsibilities for managing disaster generated debris.

# Debris MOUs would:

- Identify and clarify roles between Metro and local government partners in preparation, response and recovery from debris-generating disasters
- Increase the readiness and resilience of greater Portland to be able to respond efficiently and effectively during response and recovery of a disaster.
- Help ensure debris generated from a disaster is managed in a safe, legal, equitable, cost-effective and timely manner while maintaining environmental and community safety.

# MOUs may include:

- Participation in collaborative pre-disaster planning, training and exercises
- Agree on process for locating debris collection sites
- Debris site operation
- Cooperation during disaster response and recovery
- Process for information sharing, e.g. debris volume estimates
- Agreement to after action communications and follow-up post-disaster



# Regional Waste Plan connection

The three resilience & preparedness goals in the 2030 Regional Waste Plan (RWP) include 15 specific actions outlined to move towards implementation. Actions advanced by this projects include:

- Goal 17, Action 1: Develop a regional solid waste emergency management response and recovery framework in partnership with local governments and community organizations that prioritizes those most vulnerable in a disaster
- Goal 19, Action 3: Develop agreements and contracts with service providers and partner jurisdictions to ensure rapid mobilization of regional and out-of-region resources during emergency response operations.

# MOUs

Questions or Comments?

# Debris fund project

- Metro is proposing to establish a disaster debris management fund to set aside money to help pay for post-disaster debris management.
- The fund would be available to cities & counties in the region for some debris management costs.
- May also be used by Metro, e.g. for temporary debris management site costs.

# Source of funds

- Metro currently collects a \$2.50 regional system fee on each ton of “clean-up waste” generated in greater Portland.
  - “Clean-up waste” includes: contaminated soils, street sweepings, dredge material, etc.
- This process will establish that clean-up waste fees are sent to a disaster debris fund.
- No increase in the cleanup waste fee is being proposed.

# Project benefits

- Assist local governments with paying for future disaster debris management costs.
- Help meet Regional Waste Plan Goal 19.
- Increase the region's readiness to respond effectively to future debris-generating events.
- Create a "savings account" to help Metro and the region cover future disaster debris costs.

# Disaster Debris Fund

Questions or Comments?

# Next Steps

- Begin MOU negotiations with first partner
- Include cleanup fee set aside in FY 22/23 budget
- Develop grant program for disbursing funds

Jim Quinn  
Resilience Planner  
Metro  
503-972-2760

[jim.quinn@oregonmetro.gov](mailto:jim.quinn@oregonmetro.gov)

**oregonmetro.gov**

