



**Summary Report Greenspace Grant  
Vancouver School District  
Lake Shore Elementary School  
9300 NW 21<sup>st</sup> Avenue  
Vancouver, WA 98665  
(206) 696-7135**

**June 8, 1994**

**Submitted by**

**Barbara Millikan  
Principal**



METROPOLITAN  
**Greenspaces**

12 March 1993

Barbara Millikan  
Lakeshore Elementary School  
9300 NW 21st Ave  
Vancouver, WA 98665

*Ron We have been spending  
money based on this  
amount of 2200.00 not 1200.00.  
Thanks!*

Dear Barbara,

*Barbara  
Millikan*

Congratulations. On behalf of the Greenspaces Environmental Education Small Grants review committee, I would like to let you know that we are pleased to be able to offer you a grant of \$2200. The competition for our \$40,000 in grant funds has been very intense: we received 29 applications, asking for support totalling over \$155,000. The review committee has had to work very hard to determine the best way for us to expend what we have and in so doing has had to turn down some wonderful proposed projects.

In offering you these Greenspaces environmental education funds, the committee would like to request that you carefully document all steps and outcomes in the project, so that we may compile an informative and complete file on the education projects that we are funding with Greenspaces/U.S. Fish & Wildlife Service funds. We are especially interested in a notebook with photos that will help document the naturalization of your site, preferably with the students involved in writing and maintaining that documentation. We also ask that you be sure to include in your project a landscape designer or someone else knowledgeable about native plantscapes.

Before you accept our offer, we also need to be sure that you will have no problem meeting the requirements that come with a grant from the U.S. Fish and Wildlife Service. As indicated in the grant application packet, all funds are available only on a reimbursement basis. In addition, we need to ask you go join us in making a good faith effort to involve women, minority, and disadvantaged business owners in all sub-contracting components of the grant.

We would like you to come to a meeting of all successful applicants at Metro next Monday, March 22 at 3:30 pm (directions to the meeting room will be posted on the main entry to Metro) to explain our contracting processes and time lines. We don't anticipate anyone having trouble meeting these requirements, but we do need to all education grant recipients to be aware of them. Please "RSVP" to me as soon as convenient; if it is impossible for you to come, we can arrange another time to meet.

Again, congratulations. When we meet, we can identify a time to specifically discuss the committee recommendations, if you think that you will have any trouble meeting them. I look forward to working with you on your grant project.

Sincerely,

*Ellen Lanier-Phelps*

Ellen Lanier-Phelps

Senior Regional Planner

Public Involvement and Education

### **Purpose of Project**

To create a natural habitat for native bird and animal species, have an outdoor laboratory for science studies, and create a handicapped accessible path. Children at the school will be involved in all aspects of the project, planning and design, planting and construction.

### **Project Manager**

Barbara Millikan, Principal

### **Partners**

1. Lake Shore PTA  
Jane Van Dyke, Representative
2. Clark Public Utilities  
Judith Stanton, Representative
3. Lake Shore Athletic Club  
Larry Goode, Owner
4. Larry Scherer's Rotovating  
Larry Scherer, Owner
5. Todd Horenstein, Administrator for Facilities and Building Maintenance
6. Jim Sork, Resource Coordinator for Community Service
7. Bill Coleman, Master Gardener
8. Alex Carson, Eagle Scout
9. Zach Dorsey, Eagle Scout
10. Jesse Carson, Eagle Scout
11. Girl Scout Troop #2791
12. Patty Freeman, Landscape Designer, OTAK Architectural Firm

### **Timeline of Activities**

#### **March 12, 1993**

- ◆ Awarded Grant

#### **March 22, 1993**

- ◆ Attended Meeting at Metro

#### **April 19, 1993**

- ◆ Organizational Meeting with PTA, Jim Sork of Community Service, Patty Freeman, Landscape designer

#### **April-June, 1993**

- ◆ Principal meets with Associate Superintendent and District Attorney to review contract.



- ◆ Landscape design architect, Patty Freeman teaches Lake Shore students about landscape design.
- ◆ Students take field trips to Tryon State Park to learn about native plant life. (Field trips funded by Vancouver School District community service grant.)
- ◆ Students create designs for greenspace, suggesting plantlife -- trees, shrubs, wild flowers.
- ◆ Students share ideas with landscape designer and she incorporates them into the plan.
- ◆ Students measure greenspace with landscape designer and inspect area.
- ◆ Designer presents greenspace plan to students.
- ◆ Teachers plan schoolwide theme and curriculum units for 1993-94 school year -- Stay Green and Growing -- studies of trees, birds, insects, natural habitats, planting seeds, weather, earthquakes and volcanoes, wolves, sea life, rain forest.
- ◆ School purchases curriculum materials to increase students' environmental awareness.
- ◆ Summer school students hold car wash to raise money for greenspace.
- ◆ Contact with Ellen Lanier-Phelps of Metro to Update on Project.

### **August, 1993**

- ◆ Zach Dorsey, sophomore at Columbia River High School, volunteers to conduct Eagle Scout Project working on greenspace.
- ◆ Planning meeting with partners and Todd Horenstein, Administrator for Facilities and Building Maintenance, to determine tasks to be accomplished, timelines, and responsibilities. Major focus on grounds preparation, procuring materials and plantlife, arrangements for dedication.
- ◆ Contact with Ellen Lanier-Phelps to update on project.

### **September, 1993**

- ◆ Present greenspace plan to Lake Shore Parent Community at Curriculum Night.
- ◆ Create Greenspace leadership committee for students, Steve Dietz, teacher and committee sponsor.
- ◆ Lake Shore Friendship Communities meet to plant tulip bulbs as part of overall school beautification. (Friendship Communities involves all Lake Shore students and staff. They meet once/month.)
- ◆ Zach Dorsey and scouts remeasure space and stake it out for District crew to spray for grass removal.
- ◆ First and second graders take field trip to Natural Habitat at Washington Park Zoo to study wildlife. Students begin study of trees.
- ◆ Visit with Ellen Lanier-Phelps to update progress.

### **October, 1993**

- ◆ Grass killed. Grounds rototilled four times by Larry Scherer, parent and owner of Rotovating.

- ◆ Obtain 90 cubic yard of compost to prepare soil, stakes and fencing materials.
- ◆ Grounds rototilled to mix in compost.
- ◆ Student art contest to create logo for the greenspace. Logo put on new school t-shirt. Contest sponsored by the Student Advisory Committee (leadership group sponsored by the principal).
- ◆ Girl Scout troop makes bird houses to complete a badge. Donate bird houses to the greenspace.
- ◆ Third graders begin study of Native Americans with focus on their use of natural materials, living with the environment.
- ◆ Contact with Ellen Lanier-Phelps for update.

### **November, 1993**

- ◆ Zach Dorsey and volunteers spread 90 cubic yards of compost over greenspace and put up 600 feet of fencing.
- ◆ Preparation for greenspace dedication -- students write letters, invite VIP's create banners in arts block, learn songs to sing at dedication. Principal arranged publicity, program. PTA volunteers to contact special guests and help with decorations and preparations.
- ◆ OTAK architectural firm donates our first tree, a broad-leaf maple, to be planted at the dedication.
- ◆ Principal begins campaign to raise donations for the greenspace. (See attached flyer and certificate.)
- ◆ Clark Public Utilities donates over 450 trees and shrubs through the national Tree Power program.
- ◆ Inventory plants and shrubs received. Order missing plants.
- ◆ Contact with Pat Lee, new liason from Metro for greenspaces.

### **November 29, 1993**

- ◆ Dedication held with Jolene Unsoeld, keynote speaker. School District gives partnership awards. Metro recognized for its support. Broad leaf maple planted. (See copy of program for further details. Videotape available upon request.)

### **December, 1993 - February, 1994**

- ◆ A very wet winter. Attempted several plantings, but the ground was totally mucky. Waited for a dry spell which didn't come until the end of February. Learned flexibility and adaptability.
- ◆ Cocoa and caring celebration at school included creation of natural bird feeders we placed outside in the greenspace -- popcorn & cranberry strands, peanut butter & pine cone feeders.
- ◆ Students finish study of trees and Native Americans.

- ◆ Students begin study of native birds. Audubon society teaches classes on birds of prey.
- ◆ Bill Coleman of Master Gardeners joins us to revise our greenspace plans and create new planting plans.
- ◆ Barb Millikan interviewed on District's cable access channel, describing the greenspace and progress to date.
- ◆ Alex Carson, Senior at Hudson's Bay High School volunteers to conduct Eagle Scout Project for greenspace.
- ◆ Greenspace leadership committee stakes out location of path and all trees and shrubs with help from Master Gardeners. Students also inventory plants received and determine which are not native species.
- ◆ Purchase additional compost to use in planting.
- ◆ Contact Pat Lee to request extension of grant.

### **March, 1994**

- ◆ Clark Public Utilities donates gravel for path.
- ◆ Vancouver District maintenance crews spread gravel to create path.
- ◆ Alex Carson completes Eagle Scout Project by planting all large trees and shrubs with volunteers. Bill Coleman supervises with support of Lake Shore custodian, DeWayne Fry.
- ◆ Student Leadership committee repairs fencing and stakes out areas for remaining plants, grasses.
- ◆ Washington State University Extension offers 4-H/Gardeners gardening classes to third graders.
- ◆ Lake Shore open house. Students sell planters to raise money for the greenspace.
- ◆ Students begin studies of the rain forest.

### **April, 1994**

- ◆ Purchase sword ferns and native grass seed.
- ◆ Lake Shore students and staff plant over 250 sword ferns on Arbor Day and Earth Day. Master gardeners help finish sword fern planting as well as middle school students, who need to complete community service projects.
- ◆ Girl Scout troop plants remaining trees for arbor day celebration.
- ◆ Zach Dorsey awarded Eagle Scout for participation in Greenspace. Barb Millikan is his sponsor and keynote speaker.
- ◆ Students in grades one and two begin farm unit.
- ◆ All Lake Shore students begin run to greenspaces around the world -- Olympic Rainforest, Amazon Rainforest, for examples.
- ◆ PTA sponsors Volksmarch. Volksmarch highlights 10 historical sites in our neighborhood including the greenspace. Over 600 people participate.

## **May-June, 1994**

- ◆ Locate water source to water greenspace throughout summer and until plants are established.
- ◆ Rototilling of areas where native grass needs to be planted.
- ◆ Jesse Carson completes eagle scout project by clearing out weeds and crab grass, tilling the ground, planting grass seed.
- ◆ Purchase wild flower seed and plant.
- ◆ PTA Green house sale - fund-raiser for greenspace and green house.
- ◆ Complete grant summary.
- ◆ Award plaque to school - bears names of all donor to the greenspace.
- ◆ Plan for the next steps.

### **Businesses Where We Purchased Most Materials**

- ⇒ Yard and Garden, Vancouver, WA - Trees & shrubs.
- ⇒ Builder's Square, Portland, OR - Fencing Materials
- ⇒ Loen's - Forest Park, OR - Purchase of Sword Ferns
- ⇒ North American Soils, Portland, OR - Compost made by City of Portland
- ⇒ Hobbs and Hopkins, LTD., Portland, OR - Native Grasses and Wild Flowers
- ⇒ Forest Farms, Southern Oregon - Red Twig Dogwoods
- ⇒ Lumberman's, Vancouver, WA - Stakes, ties.

(Detailed Billing Included in Report.)

### **Donations to Our Greenspace**

- ◆ Over 1000 volunteer hours of staff, students, scouts, parents, community members, master gardeners, and landscape designer.
- ◆ \$500.00 from PTA to pay for landscape designer and support in other fund-raising efforts.
- ◆ Over \$1100.00 in cash contributions.
- ◆ Rototilling by Larry Scherer's Rotovating, Inc.
- ◆ Over 450 trees and shrubs by Clark Public Utilities.
- ◆ Gravel for our path donated by Clark Public Utilities.
- ◆ In-kind donation of Vancouver school District Personnel, including Lake Shore principal, teachers, staff assistants, custodian, grounds crew, Administrator for Facilities and Buildings Maintenance, Resource Coordinator for Community Services, Public Relations Department.
- ◆ In-kind donation of Vancouver School District Resources, including heavy equipment, supplies, and materials.
- ◆ Over \$1000.00 from Vancouver School District Community Services to support field trips to natural habitats.

### Brief Summary

We knew almost nothing when we began our greenspace project. We had a dream, some great ideas, and good instincts to find people to guide us. Our greenspace took on a life of its own, drawing people to support it with their shovels and their dollars. It truly is a field of dreams.

Together, we have created a natural habitat over 15,000 square feet of our school property. We've planted over 500 trees and shrubs, wild grass seed, and wild flowers.

Every student at Lake Shore has participated in our greenspace in some way. They've scattered seeds and dug deep holes. They've studied curriculum related to natural habitats and learned about design. They've gotten their coats soaked with rain and shoes caked with mud. They've learned the meaning of commitment and flexibility. They've made a difference in their community. Our greenspace will be a place of beauty for many generations to come.

Our deepest appreciation to Metro for supporting our greenspace.

*Barbara Millikan*

Barbara Millikan, Principal

June 8, 1994

Attachments Included.

**EXAMPLE OF STUDENT DESIGN FOR GREENSPACE**

**PUBLICITY**

# Green space project gets green light

By next February, Lake Shore Elementary School's staff, students and neighbors will be enjoying a piece of the great outdoors—right at their doorstep.

Together, the school and community are developing a green space. They plan to restore a section of land to a natural habitat for birds by planting native trees and foliage. Also included in the park-like area will be a study center and a neighborhood path with handicapped access.

Part of the property is owned by the school district; the rest is owned by Lake Shore Athletic Club, which has become a partner in the project.

The project is being funded by a \$2,200 grant from the U. S. Fish and Wildlife Federation, with Metropolitan Green Space as the supervising agency. Lake Shore was the only site selected in

Clark County. Parent volunteer Jane Van Dyke wrote the grant application, and she is continuing to help coordinate the project.

In readiness for the green space, the Lake Shore PTA refurbished the school's greenhouse. Local landscape architects helped students with planning and design.

Students researched to determine which plants are native to the area. Native trees like Douglas fir, broadleaf maple, and flowing current were chosen so the area will be self-maintaining.

The land will be cleared this summer, and planting will begin in the fall. Lake Shore teachers are planning study units that will coincide with development of the green space.

"I think students can learn how to take care of the environment by starting with this piece of land at school," said Principal Barbara Millikan. "We not only want to have the children use and take pride in this natural area, we want the neighbors to use it and enjoy it as well," she added.

The school is looking for partners to help with the project. Dave Lambert, horticulture teacher at Columbia River High School, hopes to get high schoolers involved with the planting. Yard 'N Garden already has donated some plants. More plants and fencing will be needed to complete the area.

The new green space will be ready just in time for a major centennial celebration being planned for the 1994-95 school year. That will mark the 100th year that a school has been operating in the Lake Shore area.

Jeoni Coyle, Chapter 1/LAP clerk, has been sporting a Los Angeles Dodgers T-shirt, autographed by one of the newest team members—her son.

Bryan Coyle, who just graduated from Hudson's Bay, was drafted by the Dodgers in the 27th round of the major league draft. He was selected for his pitching and hitting. Bryan was the greater St. Helens "Player of the Year" and the number one nominee to the Washington All-State Game.

## Foundation elects leaders

Peggy Lansverk was elected to head the Vancouver School District Foundation for the coming year. She replaces Shirley Galloway, who will take the position of treasurer. Doris Johnson was named vice president, and Pat McCarroll was elected secretary.

Bruce Bosch, manager of Clark Public Utilities, and Read Fay, regional manager of Burlington Northern, were named to the Foundation's Board of Directors. They join Superintendent James Parsley and Tom Koenninger, vice-president/editor of the *Columbian* newspaper. Joe Palena and Arch Miller are retiring from the board.

# Bulletin





A newsletter highlighting ways businesses or agencies can share resources with schools in the Vancouver/Clark County area to improve educational opportunities and enhance the quality of tomorrow's work force.

## Grant Resource Center starts grant seminars

ESD 112's new Grant Resource Center will hold its first Grant Resource Seminar Tuesday, November 23, from 4 to 6 p.m.

**Education Opportunity** The seminar will feature a panel presentation by representatives of Southwest Washington Forward Thrust, Southwest Washington Community Foundation and the Fred Meyer Trust.

The panelists will discuss the history and focus of their trusts, what their plans are for this year and what they look for in a grant proposal.

The Grant Resource Center has been created to assist schools and

other community organizations to act collaboratively in seeking out and securing funding.

Since this will be the introductory meeting, there will be a presentation on the goals of the Center following the panel presentation. Meeting and topic schedules and membership costs will be discussed.

Cost for the November 23 meeting is \$20 per person. Reservations need to be made by November 16 to Phyllis Goldhammer, ESD 112 Business/Education Partnership Coordinator, at 750-7500, ext. 315. The meeting will take place at ESD 112, 2500 NE 65th Ave., Vancouver.

## HS math class seeks visitation sites

**Business Opportunity** Don Peterson's math class at Hudson's Bay High School is looking for business sites to visit where they can see employment applications of math skills.

They are looking for sites where they can see uses of analyzing, decision making, maximizing, minimizing, etc., as opposed to basic math or measuring.

The students are available Tuesdays and Thursdays from 8 to 10 a.m. Don can be reached at 737-7368.

## help wanted...

We're looking for individuals to serve as school liaisons on the Chamber's Business Education Advisory Committee. One committee member acts as a liaison to a local school.

Could YOU:

- Work with school staff to enhance student education?
- Help develop a plan to promote business/education partnerships?
- Serve as a link to match school requests with business resources?

If you can help in these areas, call Jo Jones at the Chamber, 694-2588.

## Lake Shore seeks to create greenspace

A little-used area of Vancouver's Lake Shore Elementary School is being returned to nature.

**Business Opportunity** A \$2,200 grant from the U.S. Fish and Wildlife Federation got the ball rolling and now the school is looking for community help to make it into a natural vegetation study area. Other groups, including the Lake Shore PTA, have also provided funding.

Principal Barbara Millikan says that the school is looking for donations of funds or materials to return the area to a native state. They are looking for large trees, plants, fencing, a park bench and a path that can accom-

modate wheelchairs.

Millikan hopes that the area will attract wildlife and that as the plants are identified with signage, students will use the area to study nature.

The school will be creating a plaque to honor contributors and may sell "A Slice of Wildlife," honorary deeds to plots in the greenspace.

Students have been involved in the design of the greenspace and will be involved in maintenance and improvements in the future.

The area will be dedicated at a ceremony Monday, November 29, at 1:30 p.m., featuring U.S. Representative Jolene Unsoeld.

## *Volunteer Opportunity To Naturalize Vancouver*

Lake Shore Elementary School in Hazel Dell has received a Metro Greenspace grant to create a 15,000 square foot natural area.

A landscape design firm has donated a site design and the ground breaking gift of a big leaf maple. Clark Public Utilities has donated over 450 trees, shrubs, and ferns. The ground has been cleaned, composted, and rototilled. Boy Scouts will plant the large trees.

The goal is to have the school children, assisted by knowledgeable volunteers, plant all the material.

This will be accomplished both during class time and on a couple of Saturdays. About 150 volunteer hours will be needed during the latter part of February and March.

If interested, please leave name, address, and phone number with Master Gardener Volunteers Cheryle Douglas 254-8436(wk) or 944-6945(hm) or Bill Coleman at 693-9289. You will be contacted as soon as the planting schedule is set.

## **EXAMPLES OF PLANNING NOTES**

August 20, 1993

Yard & Garden trip.

## Metropolitan Greenspace Planning Meeting Agenda

### 1. Introductions

Jim Sork Community Service Resource Coordinator  
Patty Freeman Landscape Architect  
Zack Dorsey Student and Eagle Scout  
Steve Dietz Teacher  
Jane Van Dyke PTA representative  
Dave Lambert Columbia River High School

### Things to be accomplished

### Responsibility

#### 1. Ground preparation

Zack Dorsey

Get metal stakes and measure out area.

1" in 4' out fence

How to remove grass  
kill grass  
soil preparation - additional organic material  
4" x 50' feet (all over)  
rototilled  
spray - licensed sprayers - need day or 2 notice to spray  
spray 30"

#### 2. Procuring the plant materials

Shared

Propagate whatever plants we get

Wildflowers, perennials, shrubs

and oak trees

additional organic material (garage care center)  
3" - 3" caliber big leaf maples #60-80  
Minimum 2" caliber  
seeds - propagate spring, star tree winter

#### 3. Build handicapped accessible path

Todd and District?

Determine requirements from ADA

--width, materials

Best to build the path before  
having a chance participate.  
6' asphalt  
spread gravel  
measure

Before October

1. till once till grass in  
2. till compost in  
one every six feet  
inches x 20 = 1.

1. spray once  
wait 2 weeks  
2. spray again  
 $\frac{1}{2}'' = 10'$

4. Build fencing Zack Dorsey and ?

Get fence materials

--welded/woven wire-mesh fencing

6' tall

Round metal stakes,

-after the planting

-lay down near path

mid-November

5. Raise money to purchase plants and materials Barb

Donations from the community

Kind Dave Burgess

Books of the month

6. Recording the Project

Steve, Barb, Phil Burgess

7. Design and Build bird houses

Steve and students

8. Fall Planting

Tree planting ceremony

Invite Honored guests

Jolene Unsoeld

Dale Rice

Establish Partnerships

#### Resources

- Lake Shore Athletic Club.
- Inset in relation to the building

Contact Dave Lambert

Presented to the Board of Directors

## LAKESHORE ELEMENTARY PROJECT ACTIVITY LIST

MUST GET ATHLETIC CLUB POSITION ASAP-SEVERAL LARGE TREES  
ACROSS FENCE- MUST QUICKLY ADJUST DESIGN IF THEY'RE OUT

TEST SOIL FOR ANY SPECIAL REQUIREMENTS

MEET WITH/CONTACT FREEMAN

- CONTROL OF EXISTING GRASS WHERE NEW SEEDING/ *vol. 1 4-*  
PLANTING IS TO GO
- ANY SITE CHANGE ASSUMPTIONS, IE "GRADE BREAK" ✓
- FLOWERING CURRANTS NEXT TO CEDAR
- IDENTIFY ANY NON-PLANT REQUIREMENTS, IE LANDSCAPING  
WOOD OR BARRIERS FOR "GRADE BREAK"
- NON-NATURAL WATERING REQUIREMENTS-SHORT/LONG TERM
- SAND PIT PREPARATION, IE LINING ✓

CONFIRM POSITIONING OF LARGE TREES

DETERMINE WALK PREPARATION/SURFACING

- STAKE OUT WALK IF MECHANICAL WORK REQUIRED; *Dr. J. J. J.*  
OTHERWISE WAIT UNTIL MECHANICAL WORK DONE *v/ gravel*
- ORDER ANY REQUIRED PREP MATERIAL, IE GRAVEL

ASSESS NEED FOR/ACQUIRE ADDITIONAL COMPOST

ASSESS NEED FOR/ACQUIRE SAND FOR PITS -

MECHANICAL WORK

- ~~-FINALIZE SITE PREP GRADE/SAND PITS/ETC~~
- ~~-GRADE/PREP WALK IF REQUIRED~~
- MOVE PLANTS TO SITE *- distinct large / un. - base*
- POSITION LARGE TREES
- REMOVE TRACKS *- large retaining*

FINALIZE PLANT STATUS

- INVENTORY OF ON-HAND - *Steve*
- TIMING OF BACK-ORDERED
- ACQUIRE MISSING PLANTS
- DECIDE ON USE OF NON-NATIVES
- ACQUIRE SEEDS

GET STAKING MATERIAL FOR LARGE PLANTS

DETERMINE WATERING NEEDS AND DEVELOP SOLUTION

- MATERIAL/LAYOUT/DELIVERY EQUIPMENT
- NON-SCHOOL TIME MAINTENANCE

*short term  
sprinklers prob. ok*

DETERMINE STUDENT INVOLVEMENT

- DECIDE WHO CAN/SHOULD DO WHAT
- IDENTIFY PLANTING RESPONSIBILITY ZONES
- DETERMINE STUDENT TIME AVAILABILITY

DEVELOP DESIRED SCHEDULE MAXIMIZING STUDENT ASPECT

DETERMINE VOLUNTEER NEEDS

COMMUNICATE NEEDS

START PLANTING!!

DECIDE ON FENCING

- SHORT TERM PROTECTION
- LONG TERM TRAFFIC DIRECTING
- ACQUIRE FENCING

August 13, 1993

Dear Jane and Barbara,

I am enclosing a revised copy of the planting plan and plant list. Under "Perennials and Groundcovers" I have made two lists: Set A for understory under the more shaded areas, and Set B to combine with the listed grass seed and make a meadow. It is not necessary to include every plant in these two sets-they are suggestions. In these as in all of the plant choices, it is important not to substitute plants, either of other species or other plants altogether. This does not constitute a restoration unless the plants are all native species.

I am also enclosing in Barbara's copy some examples of benches, and some nursery references. I hope these will be helpful to you in your materials quest.

The plant sizes are all suggested. Natives are difficult to acquire in large sizes, so you may need to be flexible in that area. The smaller the plants, the better transplant survival rates, and the worse vandalism survival rates. I think a wire mesh fence with metal stakes and one gate will be necessary for a couple years to ensure the plants' survival. It would probably be wise to post a sign for the kids explaining why the fence is there. If I come up with any other ideas for keeping things alive, I'll let you know.

The soil in the planting area will need to be amended with compost. We always recommend Garden Care, but most fuel companies have a product that is adequate. Maybe you can get it donated, and the school district will provide a truck to haul it. I think that 4" over the whole area is a minimum, and 6" is better. It will need to be tilled into the existing soil after the grass has been killed and tilled under. This will make for much better plant survival and growth.

It will also be necessary to water the plants, and not to overwater. Probably a long hose with a brass nozzle will work fine. I think all watering should be supervised, and should only be necessary during quite dry spells, unless plants get added in the spring.

I am very excited about the idea of having the students propagate some of the plants for the restoration. To this end I have collected seed from a few species on the list, and I hope that the school will promote more. I especially encourage the propagation of the *Quercus garryana*, Oregon White Oak. These are easy to grow from acorns and transplant when they are fairly small, and difficult to purchase of any size. I think tiny Oaks are much more likely to survive if the students feel ownership. I encourage you to propagate enough Oaks to make a ring of trees around the school! This would involve many more students, change the atmosphere of the whole schoolyard in time, and be drought-tolerant and low-maintenance! Besides, these Oaks are truly magnificent in their maturity.

I have enjoyed working with you on this project a great deal, and I am looking forward to helping out with planting in the fall! Please call me anytime you have questions, at (503) 635-3618 during the day, and at (503) 234-7134 in the evening. Thanks for giving me the opportunity to do a project that really gets at the reasons I went into Landscape Architecture in the first place.

Sincerely,

*Patricia A. Freeman*

Patricia A. Freeman

P.S. I have a rendered plan for you to hang at school. Call me anytime and we can arrange an evening or weekend plan-transfer. *Thank you*



December 7, 1993

Dear Parents,

Your child is a member of our greenspace leadership club. As a member of this club, your child is helping us develop the greenspace. Steve Dietz and I would like to have your son or daughter meet us **before school tomorrow**, so we can place stakes where trees and shrubs need to be planted. This is a huge job. We have over 300 stakes to place.

We will meet at 7:30 AM in Mr. Dietz's room. Students need to wear boots, gloves, hats and work clothes. We'll probably be out in the dirt and rain. If anyone has a long measuring tape, we'd love to borrow it.

Please sign this form to give your permission for your child to join us tomorrow morning.

Thank you!



Barb Millikan  
Principal

-----

My child has my permission to come to school early on December 8, 1993, to work on the greenspace.

Parent Signature\_\_\_\_\_

Date\_\_\_\_\_Child's Name\_\_\_\_\_

## **THE DEDICATION**

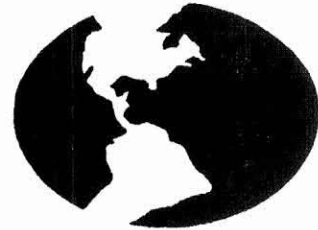
## LITTLE BLUE TOP

Round and round  
Goes the little blue top,  
Whirling and turning with never a stop;  
Dappled with white, dappled with brown,  
The little blue top  
Keeps a-turning around

O, there's wild raging oceans  
And proud mountain chains,  
Green peaceful valleys  
And wide grassy plains.  
Fam'lies of life  
That each setting contains,  
Dolphins and spiders  
And tigers and cranes.

O, there's teachers and lawyers  
And medicine men,  
Places to go to and people who've been;  
Others who stay home  
And tend to the shop,  
And they all whirl and turn  
On the little blue top.

But there're folks who are greedy  
And folks who don't care,  
And they're fouling our rivers  
And poisoning our air.  
If all of the rest of us  
Don't make 'em stop,  
They might end all the life  
On the little  
blue top.



# WELCOME TO THE DEDICATION OF THE LAKE SHORE ELEMENTARY SCHOOL GREENSPACE NOVEMBER 29, 1993



PLEDGE OF ALLEGIANCE.....Lake Shore Students  
AMERICA THE BEAUTIFUL.....Mrs. Judith Dahlren  
INTRODUCTIONS.....Lake Shore Principal, Barbara Millikan

KEYNOTE SPEAKER.....Congresswoman Jolene Unseold

LITTLE BLUE TOP.....Lake Shore 4th and 5th Grades  
GUEST SPEAKER.....Commissioner John Magnano  
PARTNERSHIP AWARDS.....Dr. James Parsley  
PRESENTATION TO SPECIAL GUESTS.....Lake Shore Students  
I'M LUCKY THERE'S A SUN .....Lake Shore Kindergarten - 3rd Grades  
PLANTING THE FIRST TREE .....Special Guests  
HOW CAN ANYONE EVER TELL YOU?.....Lake Shore Students  
FINALE: KEEP GREEN AND GROWING....Dr. James Parsley, Mel Huie, and  
Participants



REVISED 11/15/92

November 15, 1993

To: Diana Delich, Administrator for Educational Planning and  
Development  
From: Barbara Millikan, Principal  
RE: Dedication of the Lake Shore Greenspace on November 29, 1993  
Recognizing Our Partners

I would like to formally recognize our partners in the Greenspace project at the dedication. Here is the list of our partners:

1. Lake Shore PTA  
Jane Van Dyke, Project Leader
2. OTAK Incorporated, Architects, P.C.  
Patricia A. Freeman, Landscape Designer  
Don Hanson, Team Leader
3. METRO -- Metropolitan Greenspaces Program  
Mel Huie, Environmental Planning Supervisor
4. Larry Scherer's Custom Tractor Work  
Larry Scherer, Owner and Lake Shore Parent
5. Lake Shore Athletic Club  
Rick Goode, Owner
6. Boy Scouts of America Troop #343  
Zach Dorsey, Eagle Scout Project Leader
7. Girl Scouts of America Troop #2791  
Adriana Dorsey, Troop Leader
8. Clark Public Utilities, Tree Power  
Judie Stanton

Thank you!

November 15, 1993

To: Kris Shutt  
From: Barb Millikan

RE: Greenspace Dedication on November 29, 1993

Here is a copy of our partners for the Greenspace project and some tidbits of information about them. I hope this helps you with any press releases. Please call me if you have any questions. I hope you'll join us for the event.

**The Partners:**

- Patty Freeman is the landscape designer who worked with staff and students to create the design.
- Jane Van Dyke is the PTA board member who wrote the original grant and has truly been a partner with me in facilitating the project's activities.
- Rick Goode is the owner of the Lake Shore Athletic Club. The club is restoring the land adjacent to ours to increase the size of the habitat.
- Larry Scherer is a parent who has donated most of the heavy work of rototilling the 15,000 square feet to prepare the soil.
- Zach Dorsey is earning his Eagle Scout by having organized a group of scouts to put up fencing and prepare the ground. The scouts put up over 600 feet of fencing and spread 90 cubic yards of compost. The whole Dorsey family has supported Zach through this project.
- The Girl Scouts, under Adriana Dorsey's leadership, have made bird houses which they will present at the dedication.
- Through Judie Stanton, Clark Public Utilities is donating all the trees and shrubs. Clark Public Utilities is committed to a national program called Tree Power where a tree is planted for each employee.

## The Event:

- Congresswoman Jolene Unsoeld will be our keynote speaker on the 29th. John Magnana is the back-up.
- I have invited Dr. P and all the Board members. (After some thought I felt some board members might be hurt not being invited.) I want Dr. P and Sam Gunn to help shovel some dirt for the tree planting, and I know Dr. P will want to say a few words.
- I've given Diana Delich the names of the partners we want to acknowledge. I assume she'll pass that on to you. I've attached a list of guests for your information. Students sent hand-written invitations.
- Steve Dietz is the teacher who advises the Greenspace Leadership club. Steve is a new teacher to VSD and very, very talented.
- OTAK will be giving us a broad-leaf maple for the dedication. Planting of other trees will take place after the 29th.
- Students will hold a procession out to the Greenspace carrying kites and banners they've made in cooperative groups in Creative Arts Block. The block teachers, Jan Abramovitz, Marsha Vernon, and Judith Dahlsen will lead the procession. Students will also sing songs.
- Jim Sork is contacting Bruce Gately about the canape, platform, et al.
- The closing will be the tree planting with press photo of everyone sticking their shovel in the ground.
- Phil Burgess will be on hand to videotape the event. Phil has helped us with other coverage.
- Reception for adults will follow in the cafeteria.

November 21, 1993

To: Jolene Unsoeld, Congresswoman  
From: Barb Millikan, Principal

**RE: Greenspace Dedication on November 29, 1993**

I am very honored to have you be our keynote speaker at our greenspace dedication. Here is a copy of our partners in the project and some tidbits of information about them. I've also included a rough draft of the program. We'll go outside for the tree planting, rain or shine. Please call us at 206-696-7135 if you will be late. I'll readjust the order in the program. I'd like to start our procession out at 1:30 PM and be finished by 2:00 PM. I'm looking forward to meeting you. Thanks!

**The Partners:**

1. Lake Shore PTA  
Jane Van Dyke, Project Leader

•Jane Van Dyke is the PTA board member who wrote the original grant and has truly been a partner with me in facilitating the project's activities.

2. OTAK Incorporated, Architects, P.C.  
Patricia A. Freeman, Landscape Designer  
Don Hanson, Team Leader

•Patty Freeman is the landscape designer who worked with staff and students to create the design.

•OTAK will be giving us a broad-leaf maple for the dedication. Planting of other trees will take place after the 29th.

3. METRO -- Metropolitan Greenspaces Program  
Mel Huie, Environmental Planning Supervisor

•METRO is the sponsoring agency for the grant we received. Mel Huie is one of the original greenspace planners.

4. Larry Scherer's Custom Tractor Work  
Larry Scherer, Owner and Lake Shore Parent

•Larry Scherer is a parent who has donated most of the heavy work of rototilling the 15,000 square feet to prepare the soil.

5. Lake Shore Athletic Club  
Rick Goode, Owner

•Rick Goode is the owner of the Lake Shore Athletic Club. The club is restoring the land adjacent to ours to increase the size of the habitat.

6. Boy Scouts of America Troop #343  
Zach Dorsey, Eagle Scout Project Leader

•Zach Dorsey is earning his Eagle Scout by having organized a group of scouts to put up fencing and prepare the ground. The scouts put up over 600 feet of fencing and spread 90 cubic yards of compost. The whole Dorsey family has supported Zach through this project.

7. Girl Scouts of America Troop #2791  
Adriana Dorsey, Troop Leader

•The Girl Scouts, under Adriana Dorsey's leadership, have made bird houses which they will present at the dedication.

8. Clark Public Utilities, Tree Power  
Judie Stanton

•Through Judie Stanton, Clark Public Utilities is donating all the trees and shrubs. Clark Public Utilities is committed to a national program called Tree Power where a tree is planted for each employee.

Thank you!



( 7 )

-



## VANCOUVER PUBLIC SCHOOLS

SCHOOL DISTRICT NO. 37 - Clark County  
LAKE SHORE ELEMENTARY SCHOOL  
9300 N.W. 21 Avenue  
Vancouver, Washington 98665  
An Equal Opportunity District

---

Designated a National Lighthouse District by the United States Department of Education February 15, 1983 (HOSTS Reading and Math)

November 1, 1993

Dear Colleagues and Friends,

The enclosed letter, prepared by a 4th or 5th grade Lake Shore student, is an invitation for you to attend the dedication of our Greenspace. Our Greenspace project involves students in a variety of leadership roles. One of these roles is learning to communicate information about our project to people in our school district and in our community. The student letter is an example of this.

We hope you can be present for this event and look forward to seeing you on November 29th.

Sincerely,

Barbara Millikan  
Principal

Stephen A. Dietz,  
Teacher and Student Leadership Advisor

## Mock Letter for Guests

November 1, 1993

Name of Person to whom the letter goes  
Their Title

Dear \_\_\_\_\_,

We would like you to be our guest at the dedication of our Greenspace on Monday, November 29, at 1:30 P.M. At the dedication we will recognize the businesses and individuals who have contributed to our Greenspace. We will also recognize METRO and the U.S. Fish and Wildlife Federation who sponsored our grant. Congresswoman Jolene Unsoeld will be our keynote speaker.

Please call Janet Hayes at 696-7135 to let us know if you will be able to attend.

We look forward to seeing you on November 29.

Sincerely,

\_\_\_\_\_  
Student, Lake Shore Elementary School

## Mock Letter for Honored Guests

November 1, 1993

Name of Person to whom the letter goes  
Name of their Business

Dear \_\_\_\_\_,

We would like you to be our honored guest at the dedication of our Greenspace on Monday, November 29, at 1:30 P.M. You will be honored at this dedication for your contributions to the Greenspace.

Please call Janet Hayes at 696-7135 to let us know if you will be able to attend.

We look forward to seeing you on November 29.

Sincerely,

\_\_\_\_\_  
Student

District Staff who should be invited to the Greenspace Ceremony

Dr. James Parsley, Superintendent

Mr. W. Michael Bruener, Associate Superintendent

Mrs. Alice Cooley, Administrator for Operations

Mrs. Diana Delich, Administrator for Educational Planning and Development

Mrs. Jeanne Mack, Administrator for Curriculum and Instruction

Dr. James Sork, Resource Coordinator

Mrs. Syreece McLean, Resource Coordinator

Mr. Todd Horenstein, Administrator for Physical Facilities and Planning

Mr. David Butts, Physical Facilities and Planning

Charlotte Brown, Resource Coordinator

Tom Cone, Director of Special Services

Mr. John Custer, Maintenance



VANCOUVER PUBLIC SCHOOLS  
SCHOOL DISTRICT NO. 37 - CLARK COUNTY  
LAKE SHORE ELEMENTARY SCHOOL  
9300 NW 21 Avenue  
Vancouver, Washington 98665  
Phone: (206) 696-7135  
An Equal Opportunity District

---

Designated a National Lighthouse District by the United States Department of Education February 15, 1983 (HOSTS Reading and Math)

25 of August, 1993

Congresswoman Jolene Unsoeld  
1110 Capital Way South Room 3404  
Olympia, WA. 98501

*Jolene*  
Dear Congresswoman Unsoeld,

We would like to invite you to be our keynote speaker at the dedication of the LakeShore Elementary School Greenspaces Project. The dedication is being planned for the week of November 15th or 29th, depending on your schedule. At the dedication will be local school and government officials, as well as, our students, their parents and community members.

Our Greenspaces Project is part of the Metro Greenspaces/US Fish and Wildlife Service's grant program to local governments and non-profit groups for the creation and restoration of natural areas. We are restoring part of our school grounds to native habitat. We have been working with a landscape designer to learn about native plants and habitats. We will be planting the area this fall and winter.

Thanks to your interest and support this money was received by the Metro Greenspaces. We hope you will be able to join us. Please let us know as soon as possible so we can complete our plans.

Sincerely,

*Barbara*

Barbara Millikan  
Principal

*Jane*  
Jane Van Dyke  
PTA Parent Co-ordinator

## **GREENSPACE PLAN AND PLANT LIST**

MEGAN

THINGS TO PUT

stringing fern  
holly

licorice fern  
indian plum  
deer fern

Douglas fir  
mushrooms

Big leaf maple  
salmon berry  
turkey fungus

Blue spruce  
Sitka spruce  
Apple tree

Dog wood

some kind of  
small body of  
water

Oak

Hemlock  
Cedar

GRADE BREAK

path, dirt and shavings

salmon berry,  
indian plum,  
deadly night shade  
Oregon grape

back stop

thimbleberry  
holly  
indian plum  
salmon berry

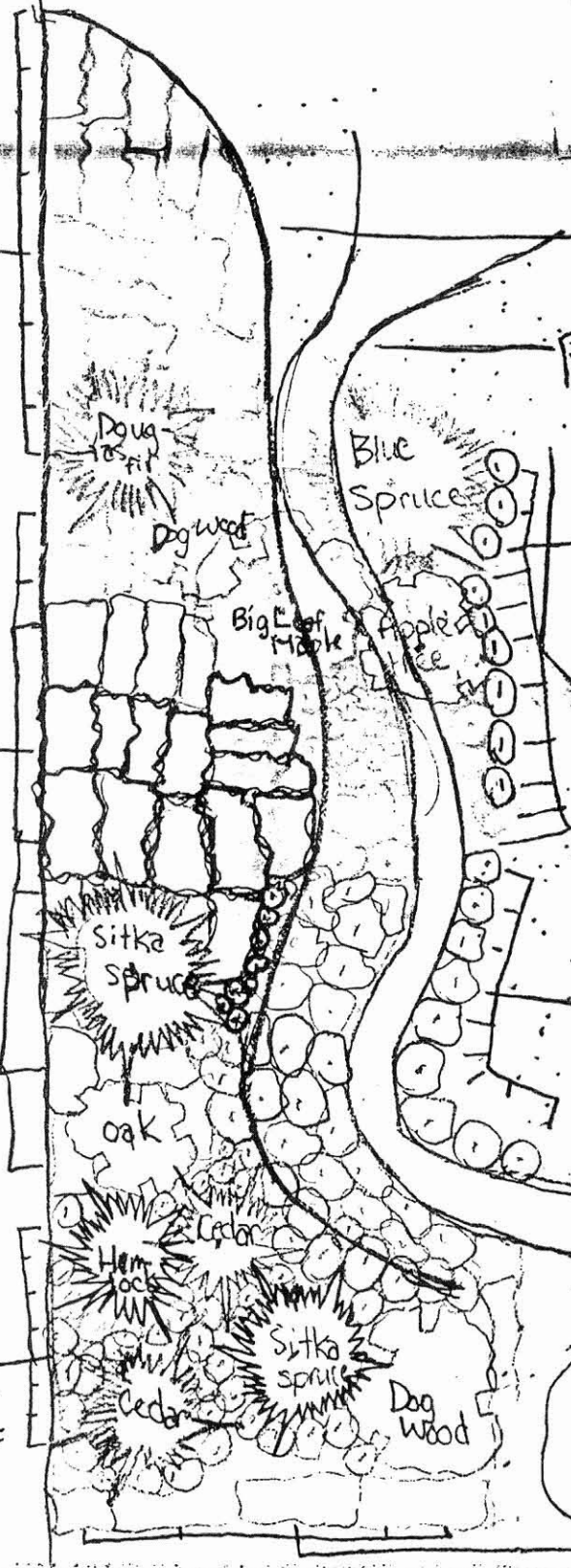
water?

sword fern

butter cups, stringing nettles,  
deer fern sword ferns

turkey fungus, mushrooms, bracken ferns,  
licorice ferns

holly,  
indian plum,  
salmon berry





# Students and neighbors "dig in" to beautify the earth

By this time next year, a barren plot of land in the Lake Shore neighborhood will be filled with Douglas Fir trees and rhododendrons, sparrows and squirrels, and even neighbors and students. The Lake Shore Greenspace was officially dedicated Monday, Nov. 29, and the first tree, a large-leaf maple, was planted in the ground.

The students at Lake Shore Elementary School and community members are working together with a common goal—a greenspace that would be a natural habitat for birds, a study center for the environment, and a place to be enjoyed by all residents of the Lake Shore neighborhood. The property is adjacent to the school and owned by the school district. Adjoining property is being developed by Lake Shore Athletic Club.

At the dedication, Congresswoman Jolene Unsoeld praised

students for their efforts to improve the environment and said, "Your mothers and fathers are going to learn from you and your projects." Students had assembled amid windsocks, paper cranes, and banners that they had made to celebrate the earth.

The Lake Shore Greenspace project got underway last spring with a \$2,200 grant from the U.S. Fish and Wildlife Federation, with Metropolitan Greenspace as the supervising agency. Parent Jane Van Dyke wrote the grant and spearheaded the project. Several community partners have donated trees and foliage, landscaping materials, and services.

Patricia Freeman, a landscape designer with OTAK Incorporated Architects, helped students with planning and design. To earn his Eagle Scout award, Zach Dorsey, a Columbia River High School

student, supervised the building of more than 600 feet of fencing and the spreading of 90 cubic yards of compost. Larry Sherer, a Lake Shore parent and owner of Larry Scherer's Custom Tractor Work, donated services to prepare the site. Girl Scout Troop #2791 made birdhouses for the area. As part of the "Tree Power" program and a pledge to plant one tree for each customer, Clark Public Utilities is donating 28 large trees for the site.

Before beginning restoration of the land, students at Lake Shore Elementary School researched to determine which plants are native to the area. Fourth and fifth grade students involved in the Greenspace Club (one of several leadership groups for students) wrote letters of invitation to community leaders. Hans Linde, a fifth grader, designed the logo for the greenspace, which was selected by students and staff

members in a contest.

Planting and development of the site will continue throughout the 1993-94 school year, with every student taking part. Applications now are being made for a second grant to complete a walkway with handicapped access. Parents and neighbors are being invited to donate \$20 to support a "slice of wildlife." Names of supporters will appear on a plaque at the school.

Completion of the Lake Shore Greenspace will be timely for a centennial celebration. The 1994-95 school year will mark the 100th year that a school has served children in the Lake Shore area.



Assisting with tree planting are (left to right) Barbara Millikan, principal; Jane Van Dyke, volunteer coordinator; Kelley Carroll, fifth grader; Patricia Freeman, landscape architect; and Joseph Boice, fifth grader.

**Vancouver School District  
Board of Directors**  
Dr. Edward Rankin, President  
Sam Gunn  
Paul Gutierrez  
Randi Holland  
Dale Rice  
**Superintendent**  
Dr. James F. Parsley



**Vancouver School District No. 37**  
PO Box 8937  
Vancouver, Washington  
98668-8937  
(206) 696-7000

**Public Information Office**  
Kris Shutt  
Tom Hagley  
Photos: Ed Vidinghoff  
Cover photo: Joe Balin

*The Vancouver School District is an  
Equal Opportunity Employer*

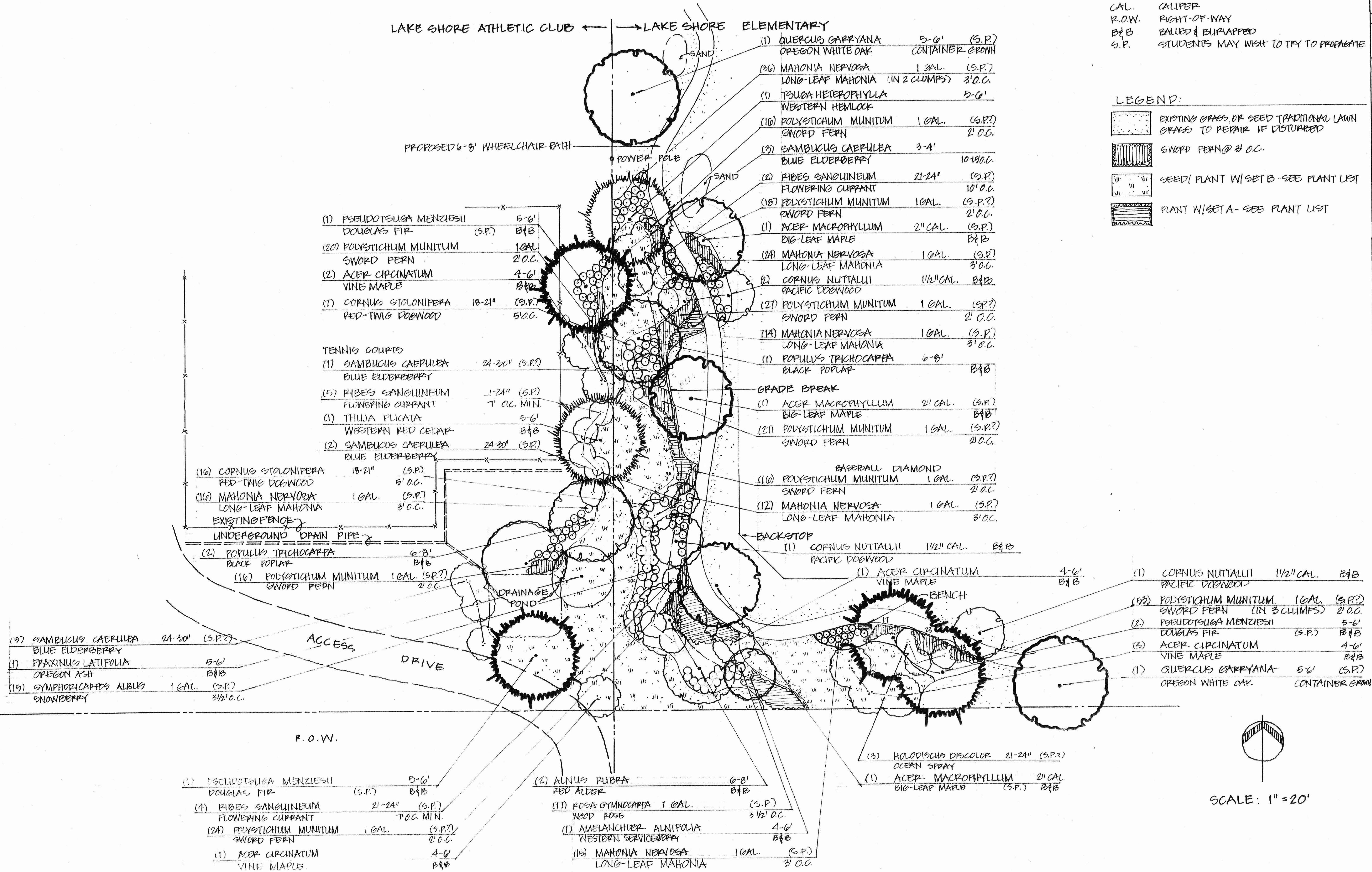


PLANTING PLAN  
LANDSCAPE RESTORATION

LAKE SHORE ELEMENTARY SCHOOL  
9300 N.W. 21<sup>ST</sup> AVENUE  
VANCOUVER, WASHINGTON  
SH.10F1

ABBREVIATIONS:  
O.C. ON CENTER - SPACE PLANT FROM CENTER TO CENTER  
GAL. GALLON  
CAL. CALIPER  
R.O.W. RIGHT-OF-WAY  
B&B BALLED & BURAPPED  
S.P. STUDENTS MAY WISH TO TRY TO PROPAGATE

LEGEND:  
EXISTING GRASS, OR SEED TRADITIONAL LAWN GRASS TO REPAIR IF DISTURBED  
SWORD FERN @ 2' O.C.  
SEED/PLANT W/SET B - SEE PLANT LIST  
PLANT W/SET A - SEE PLANT LIST





## PLANT LIST

### Trees:

Acer circinatum	Vine Maple
Acer macrophyllum	Big-Leaf Maple
Alnus rubra	Red Alder
Amelanchier alnifolia	Serviceberry
Calocedrus decurrens	Incense Cedar
Cornus nuttallii	Pacific Dogwood
Corylus cornuta	Western Hazelnut
Crataegus douglassii	Douglas Hawthorn
Fraxinus oregona	Oregon Ash
Populus trichocarpa	California Black Poplar
Pseudotsuga menziesii	Douglas Fir
Quercus garryana	Oregon White Oak
Thuja plicata	Western Red Cedar
Tsuga heterophylla	Western Hemlock

### Shrubs:

Cornus stolonifera	Red-Twig Dogwood
Holodiscus discolor	Ocean Spray
Mahonia aquifolium	Oregon Grape
Mahonia nervosa	Long-Leaf Mahonia
Polystichum munitum	Sword Fern
Ribes sanguineum	Flowering Currant
Rosa gymnocarpa	Wood Rose
Rubus parviflorus	Thimbleberry
Sambucus glauca	Blue Elderberry
Symphoricarpos albus	Snowberry

### Perennials and Groundcovers:

Achlys triphylla	Vanilla Leaf
Anaphalis margaritacea	Pearly Everlasting
Aquilegia formosa	Columbine
Asarum caudatum	Wild Ginger
Dicentra formosa	Bleeding Heart
Heuchera micrantha	Alum Root
Iris tenax	Oregon Iris
Lupinus polyphyllus	Big-leaf Lupine
Maianthemum dilatatum	False Lily-of-the-Valley
Smilacina racemosa	False Solomon's Seal
Tolmiea menziesii	Youth-on-age
Vancouveria hexandra	Inside-Out Flower
Viola glabella	Yellow Violet

**FUNDRAISING LETTER AND CERTIFICATE**



**BE A GREAT NEIGHBOR TO NATURE  
AND  
INVEST IN A SLICE OF WILDLIFE.**

The Lake Shore Greenspace is our neighborhood backyard. A place where our children can learn, where families can gather for an afternoon of fun, where friends can meet to explore nature. It's a place where neighbors can celebrate why they live where they live.

**\*To support native wildlife, our Greenspace needs plants, shrubs, and flowers.**

**\*To enjoy it for years to come, our Greenspace needs a path which gives everyone access. It needs park benches, wildlife markers, and permanent fencing to protect the young trees and shrubs as they grow.**

**\*To become a natural habitat, our Greenspace needs special care for the first few years until the plantlife becomes established.**

**Your investment of \$20.00 will help us build a better neighborhood.  
Adopt a square yard of the Lake Shore Greenspace.**

Donors will receive an adoption certificate for their contribution to the Greenspace. Donors' names will be engraved on a plaque which will be placed in a place of honor at our school.

-----  
If you would like to adopt a piece of our Greenspace, detach this portion of the flyer, fill out the information below, and return it to school with a check made out to Lake Shore. Donations are tax deductible.

Please send me \_\_\_\_\_ certificates @ \$20.00 each.

NAME(s) to appear on certificate(s) and  
plaque: \_\_\_\_\_

NAME if different than above \_\_\_\_\_

ADDRESS \_\_\_\_\_

CITY/STATE/ZIP \_\_\_\_\_ PHONE \_\_\_\_\_



**LAKE SHORE GREENSPACE  
CERTIFICATE OF DONATION**

Recipients, Lake Shore Elementary School and Lake Shore  
PTA, do hereby offer their deepest appreciation to

Donor, \_\_\_\_\_

for making a contribution to the Lake Shore Greenspace.  
This donation will help preserve wildlife and give our  
community a place for learning and enjoyment.

Dated this \_\_\_\_\_ day of \_\_\_\_\_, 1993.

\_\_\_\_\_  
Barbara Millikan, Principal  
Lake Shore Elementary School

\_\_\_\_\_  
Mary Lookingbill, President  
Lake Shore PTA

\_\_\_\_\_

**CORRESPONDENCE WITH METRO**

Sent 1/24/94

January 24, 1994

Mr. Pat Lee  
Environmental Planning Supervisor  
Metropolitan Greenspaces

Dear Pat,

As we discussed last week, I am requesting an extension on our Greenspace grant, so we can fully complete the project. We will need until the end of March to meet all the requirements. We've experienced delays in procuring materials and completing planting.

I thought you might like to know that the Greenspace project will be featured on a local cable program, "Inside Vancouver Schools". We videotape the show tomorrow, and it will be aired 10 times during the next week on channel 63. I'm really pleased that the District believes our project significant enough to air it the week before we ask the public to endorse a \$135 million dollar bond.

Thank you for your support. I enjoyed meeting you at our dedication. Please let me know what you would like us to do to comply with the grant requirements.

Sincerely,



Barbara Millikan

c. Jane Van Dyke, PTA  
Colleen Wyche, Business Office





## VANCOUVER PUBLIC SCHOOLS

SCHOOL DISTRICT NO. 37 - Clark County  
LAKE SHORE ELEMENTARY SCHOOL  
9300 N.W. 21 Avenue  
Vancouver, Washington 98665  
An Equal Opportunity District

---

Designated a National Lighthouse District by the United States Department of Education February 15, 1983 (HCSTS Reading and Math)

March 31, 1994

Mr. Pat Lee  
Environmental Planning Supervisor  
Metropolitan Greenspaces

Dear Pat,

In January I requested an extension of our grant until the end of March. I am requesting another extension to continue through June 1st. While the grant permits me to use volunteer hours as part of the matching funds, our District can not. Thank you for your understanding in this matter.

Clark Public Utilities generously donated all the trees and shrubs, however, there have been some mix-ups in the trees we told them we needed and the trees we received. We are now working on replacing the non-native trees we received with native species. Clark Public Utilities also donated the gravel for the pathway through the space.

The space itself is much larger than we originally planned, so we redesigned it. Bill Coleman, a retired executive of IBM and Master Gardener, has been instrumental in taking off where Patty Freeman left off. At this time we have planted most of the large trees and shrubs. In addition to Zach Dorsey's eagle scout project, Alex Carson completed his eagle scout work by organizing the planting of these trees.

On April 13, Arbor Day in Washington, and on April 22, Earth Day, we will plant seeds for wild flowers and grass and sword ferns. Our Volksmarch on April 16 & 17 will feature the greenspace as part of our Centennial celebration.

Again, I would be happy to have you visit our greenspace. Thanks for your continued support.

Sincerely,

Barbara Millikan, Principal

c. Jane Van Dyke, PTA  
Colleen Wyche, Business Office

**LETTER FROM JOLENE UNSOELD**



HOUSE OF REPRESENTATIVES  
WASHINGTON, D. C. 20515

JOLENE UNSOELD  
THIRD DISTRICT  
WASHINGTON

December 17, 1993

Barbara Millikan, Principal  
Jane Van Dyke, PTA Parent Coordinator  
Lake Shore Elementary School  
9300 NW 21st Avenue  
Vancouver, WA 98665

Dear Barbara and Jane:

Thank you so much for inviting me to participate in the dedication of the Lake Shore Elementary School Greenspaces Project. I appreciated the opportunity to talk with the students and then actually help plant the first tree! Your work in organizing and creating the greenspace with so much community support is enormously impressive, and I applaud your efforts to teach the children about the importance of native plants and habitat.

Again, thank you for including me, and best wishes to you and each one of your students for a wonderful new year.

Sincerely,

Keep up the super work!