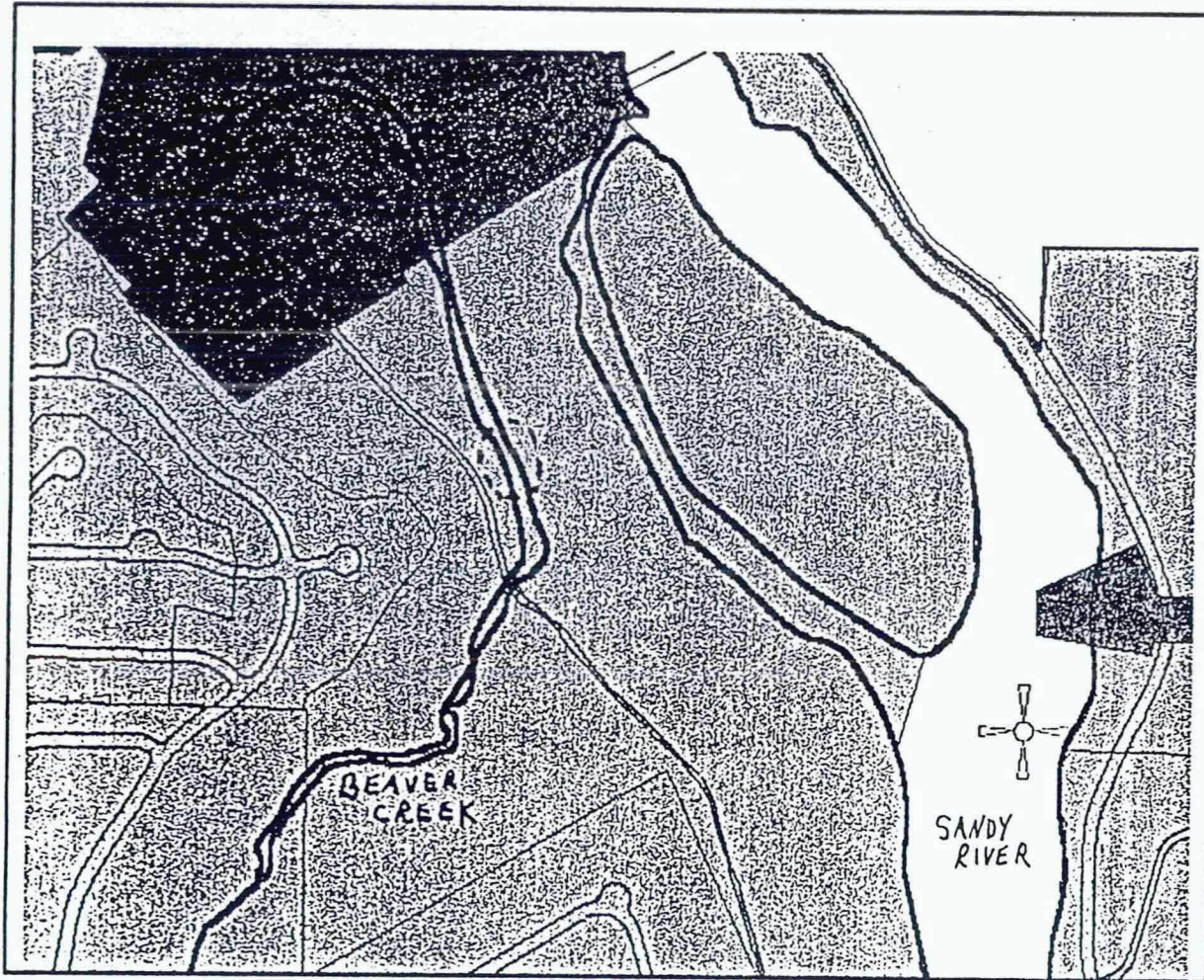


**Beaver Creek Restoration  
Glenn Otto Community Park II**

**City of Troutdale**  
Funded in 1997

# GLENN OTTO COMMUNITY PARK, BEAVER CREEK RESTORATION II








streets (LAYER)

-  BDCTY
-  RD
-  RDBR
-  RR
-  RRBR
-  SUBD
-  SUNAM
-  SVSEC
-  SWRIV

X-NARROW

landuse (PLANCODE)

-  C
-  HDR
-  I
-  LDR
-  MDR
-  MPMU

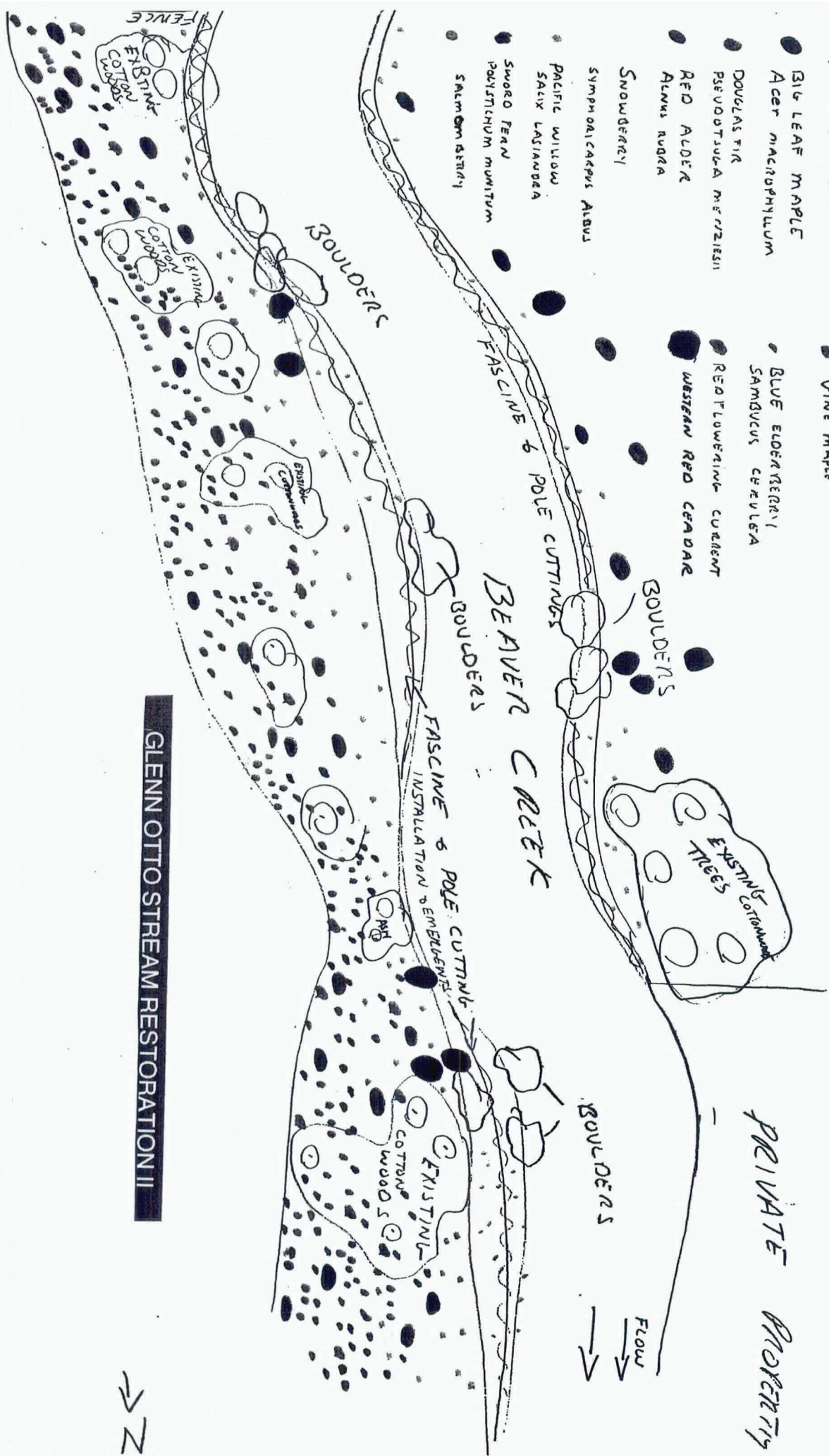




PLANT LIST

- BIG LEAF MAPLE
- ACER MACROPHYLLUM
- DOUGLAS FIR
- PSEUDOTSUGA MERRILLII
- RED ALDER
- ALNUS RUPESTRIS
- SNOWBERRY
- SYMPLOCARPUS ALBUS
- PACIFIC WILLOW
- SALIX LASIANDRA
- SWORD PEAR
- POLYTICHUM MUNITUM
- SALICORNIA

- VINE MAPLE
- BLUE ELDERBERRY
- SAMBUCUS CERULEA
- RED FLOWERING CURRANT
- WESTERN RED CEDAR



GLENN OTTO STREAM RESTORATION II

→ N

# Greenspaces restoration projects final report

## Glenn Otto II

### 4) Project Description:

The site preparation, boulders placement and planting of native plants for Phase II stream restoration on Beaver Creek at Glenn Otto Community Park was completed in October 1997. The project consisted of five parts:

- a) removing the Himalayan blackberries. A spyderhoe cleared the berry vines
- b) replanting the area with native plants. More than 60 volunteers including Friends of Beaver Creek, Sam Barlow high school students and cub scouts planted more than 1,200 native plants. This was a good opportunity for the volunteers to get involved in stream restoration.
- c) reshaping the creek bank and stabilizing it. Kiewit Construction Inc. donated the boulders and loaded them. Trucks were rented to haul the boulders to the site. The spyderhoe placed boulders and logs along the toe of the bank. A scout troop constructed 3 rows of fascines and installed jute netting along the edge of the bank.
- d) adding boulders and logs to the creek for fish habitat. The spyderhoe paced the boulders and logs in the creek. Spyderhoe spent four hours retrieving and replacing the logs from Phase I. Dale Kelly, from the USFS, volunteered his time to secure the logs to boulders by cabling them together. In Phase I, the logs in the creek were not secured. The water came up and the logs were nearly washed away. They were cabled to a tree until the water receded.
- e) The monitoring will be accomplished by in-house staff, Friends of Beaver Creek, and 2 High School classes. The on going maintenance will be by in-house staff and MYC, as well as with student from local high schools.

### 5) Goals and Benefits of the Project

The goals were to educate the public about the value of stream/habitat enhancement and stream bank stabilization. The volunteers had an opportunity to learned and "get their hands dirty" participating in planting the native plants. The volunteers came away with a better understanding of the different plant communities and the important of diverse habitat for wildlife. With the blackberry vines removed, the public has greater access to the stream. The gravel bars near the restoration site are spawning area for winter steelhead.

### 6) Work Tasks and Time Lines:

Permits Approval	5-97
Plant Material (ordered)	1-97
Boulders	8-97
Spyderhoe (in- stream work)	8-97
Plant Material (picked up)	10-97
Fascines and netting	10-97
Planting	10-97
Securing logs to boulders	10-97
Maintenance ( on-going)	3-98 thru 6-98

7) Project Budget

Items	Metro\$	Cash	Macth in-kind	total
<b>Contract Labor</b>				
Spyderhoe	2930	1370		4350
Dump trucks for Boulders	Celorie Bros. Daily	450 105		450 105
Boulders (donated)			2000	2,000
Plant Material	5000	2238.99		7238.99
Erosion Netting	270	270		540
Volunteers	325 hours		1543.75	1543.75
USFS Volunteers	8hours		160	160
Supervisor Time	41.4x21.5		892.25	892.25
Staff time	24.5x18.5		453.25	453.25
MYC	2days	300	300	600
shovels		99.80		99.80
fastners for cables		20.34		20.34
Photo		7.11		7.11
<hr/>				
Totals	8500	4861.24	5049.25	
		GRAND TOTAL		\$18,460.49

Project Staff/Workers/ Volunteers

Project Supervisor: Rob Crouch

City of Troutdale staff: Michele Rosenberger, Michael Perkins, Craig Lichtenthaler, Duane Korst  
Multnomah Youth Cooperative

Volunteers: Friends of Beaver Creek, Cub Scout pack # 174 , Boy Scout Troop # , Madison  
High School Students, Sam Barlow High School Students

9) How project relates to greenspaces program



This project is located on a regional significant creek corridor, and is readily accessible to the public.

What worked/What didn't.

Using the spyderhoe to remove blackberries works very well. In other project , we have used youth crews with less favorable results. Having volunteers plant for 3 to 4 hours works .(Friends of Beaver Creek provides lunch) this was the second year and the turn out was good. After 4 hours, volunteers energy is used up. The MYC are hired to finishes the planting, the next week.

Advice

Keep area manageable. Don't take on more than what can be maintained.

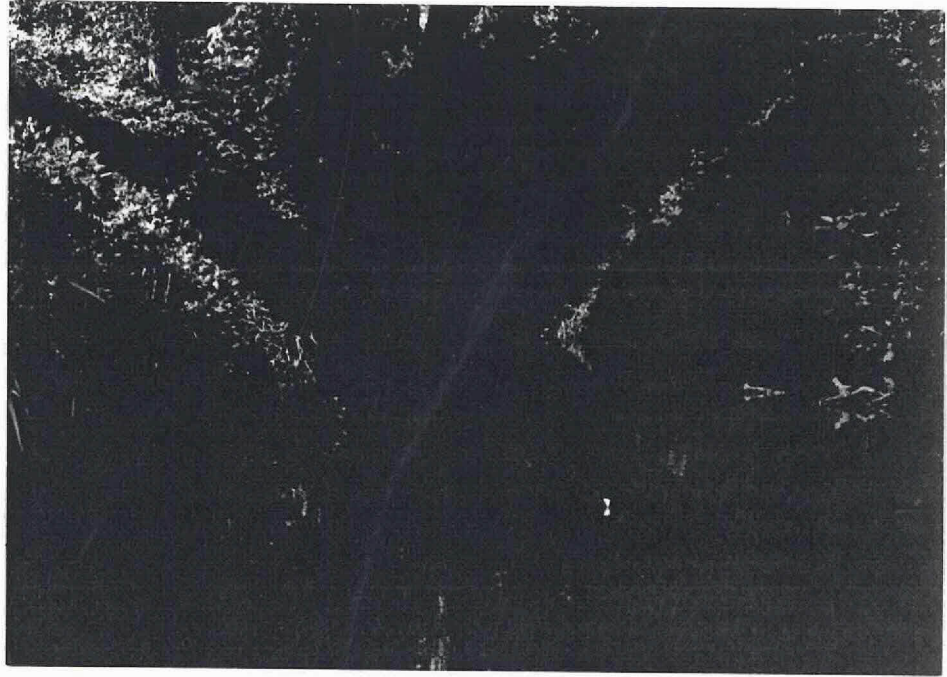
12) Monitoring and Maintenance Plan.

The site will be monitored though out the next year. Friends of Beaver Creek will monitor the site for wildlife( birds and fish). Several high school classes are monitoring the stream for ,Water temperature, ph, dissolved oxygen, and nitrates.

Maintenance will begin in the spring, to remove unwanted competition from blackberries and other weeds. The grubbing will continue as needed though out the year. We are arranging with the high schools to provide help with the maintenance. Water is readily available on site.

# BEAVER CREEK STREAM RESTORATION

## GLENN OTTO COMMUNITY PARK





BEAVER CREEK STREAM RESTORATION  
GLENN OTTO COMMUNITY PARK II  
PLANNED FOR SUMMER/FALL 1997

North



South



East



West

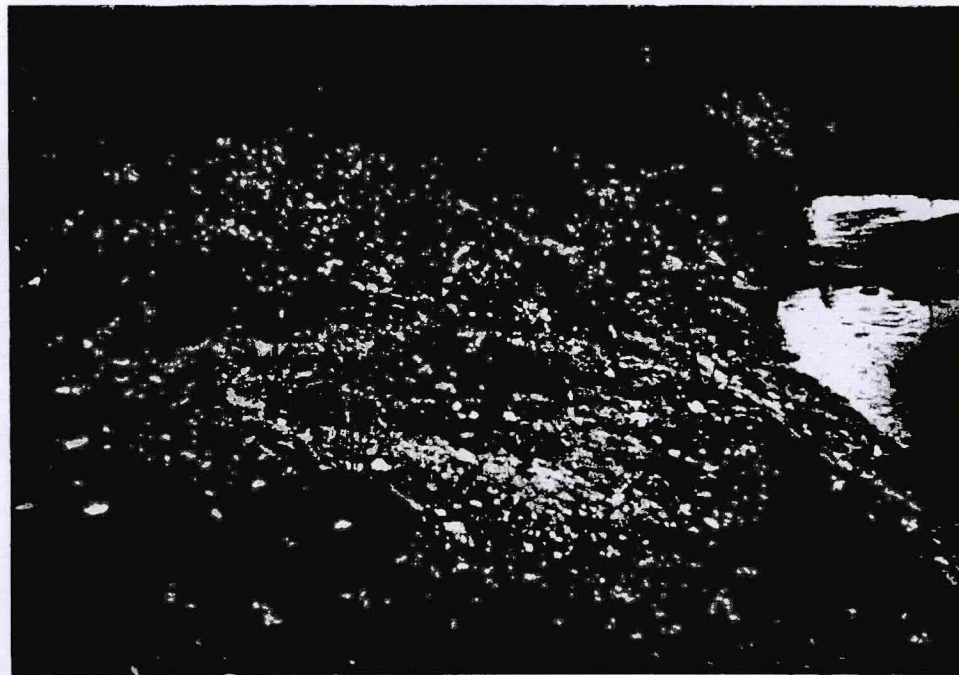




North



South



East



West



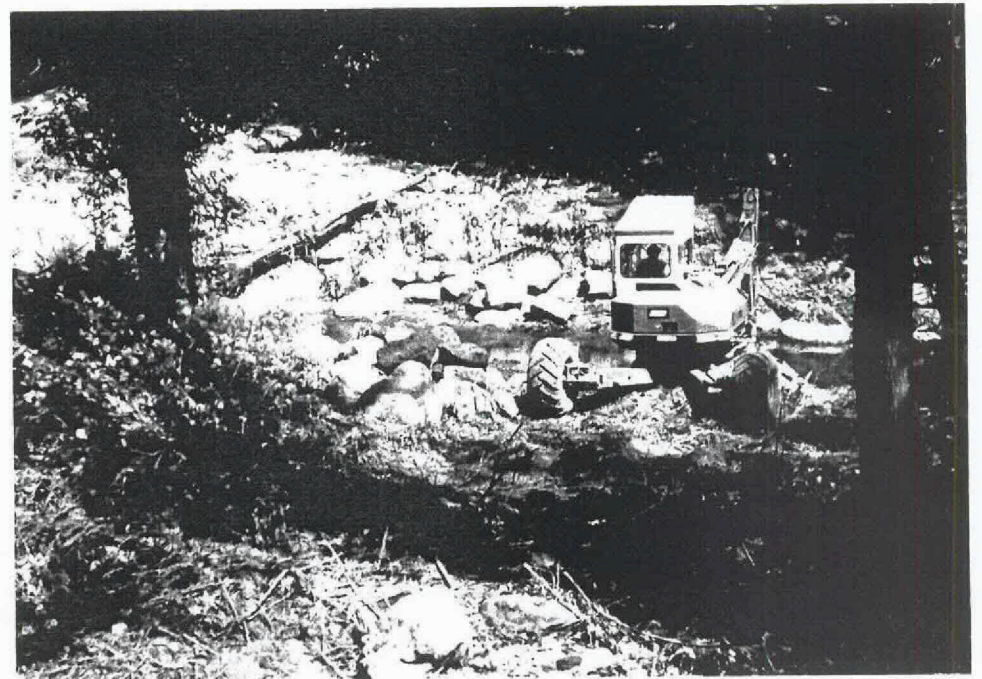




Truck delivering the boulders.

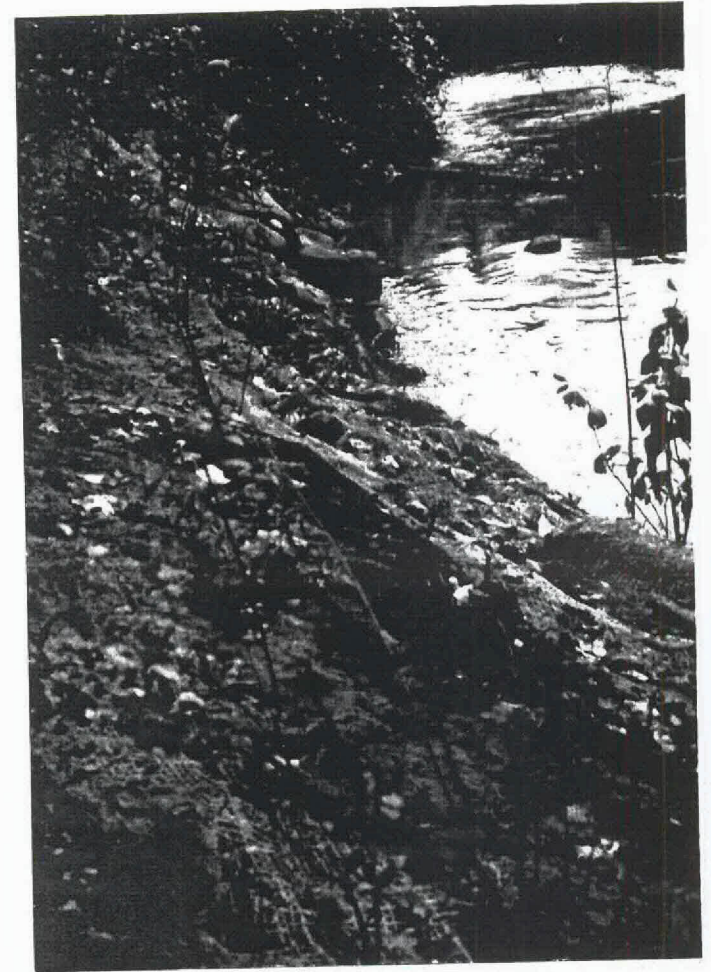


Spyderhoe moving boulders.





Spyderhoe placing boulders into stream bank.



Volunteers planting the site.