

**METRO REGIONAL PARKS AND GREENSPACES
1997-1998 HABITAT RESTORATION GRANT
FINAL REPORT**

**TIDEMAN JOHNSON PARK
ENHANCEMENT PROJECT**

Submitted to:

**Metro Regional Parks and Greenspaces Department
600 N.E. Grand Avenue
Portland, Oregon 97232-2736 # 905411**

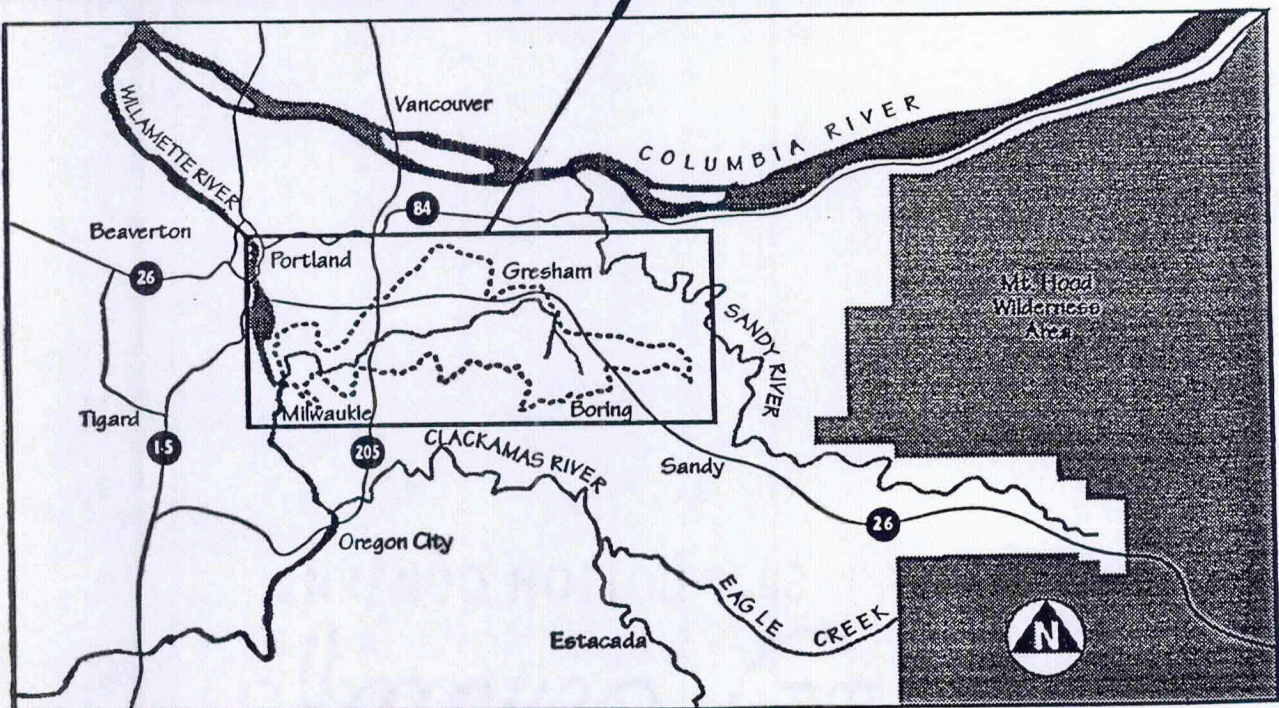
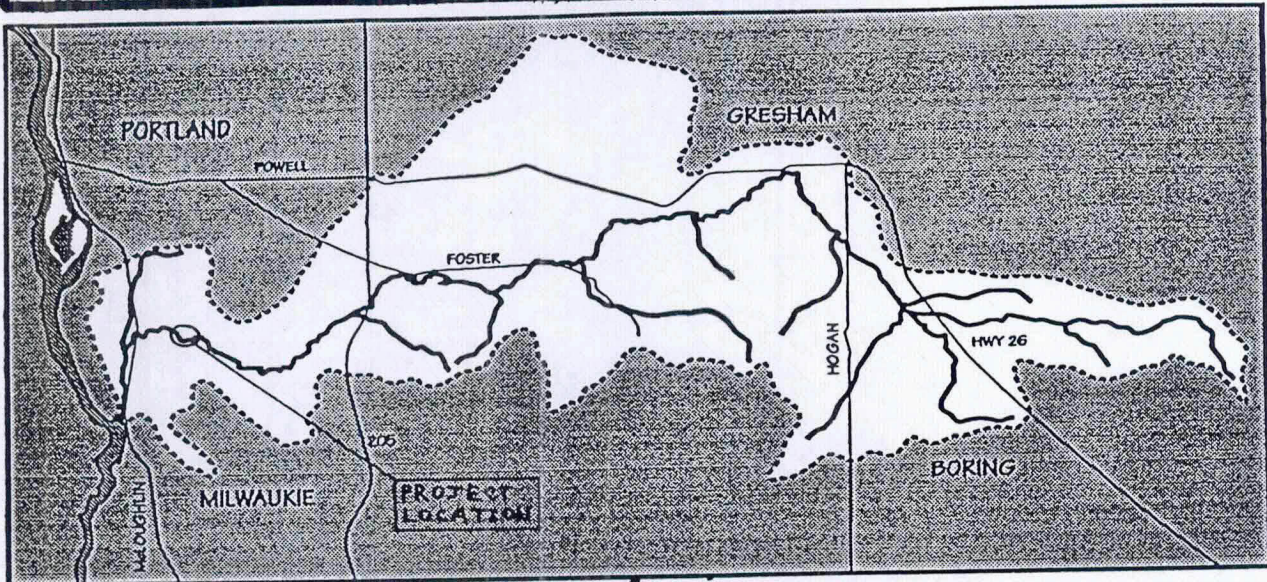
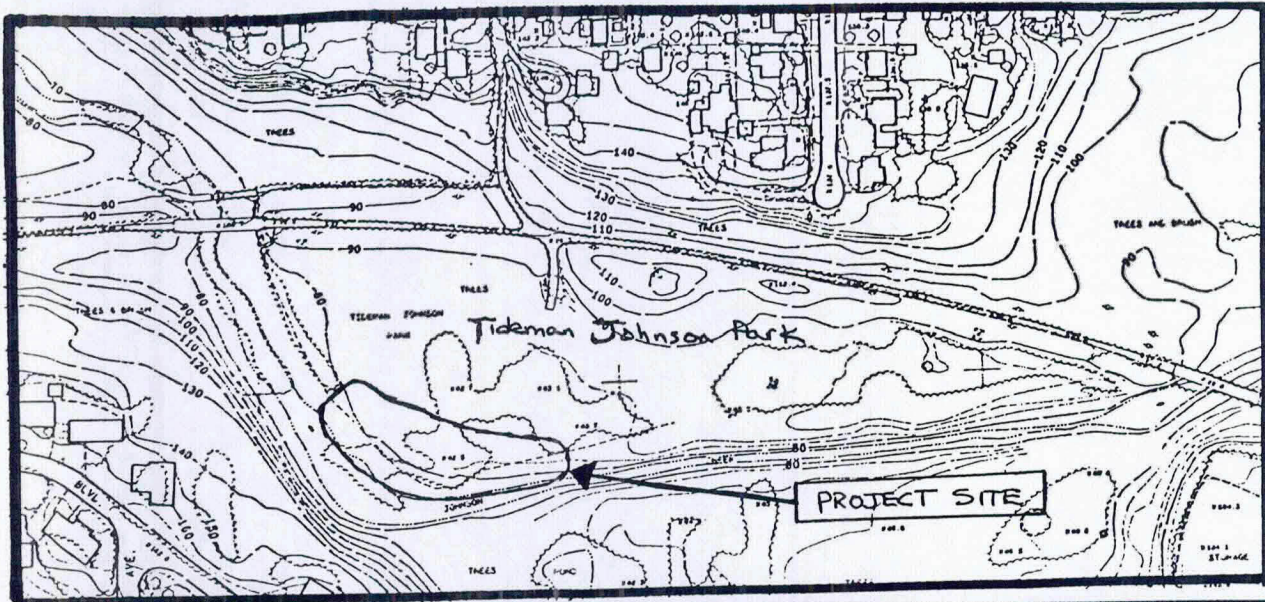
Submitted by:

**Environmental Middle School
Portland Public School District
501 N. Dixon
Portland, Oregon 97227**

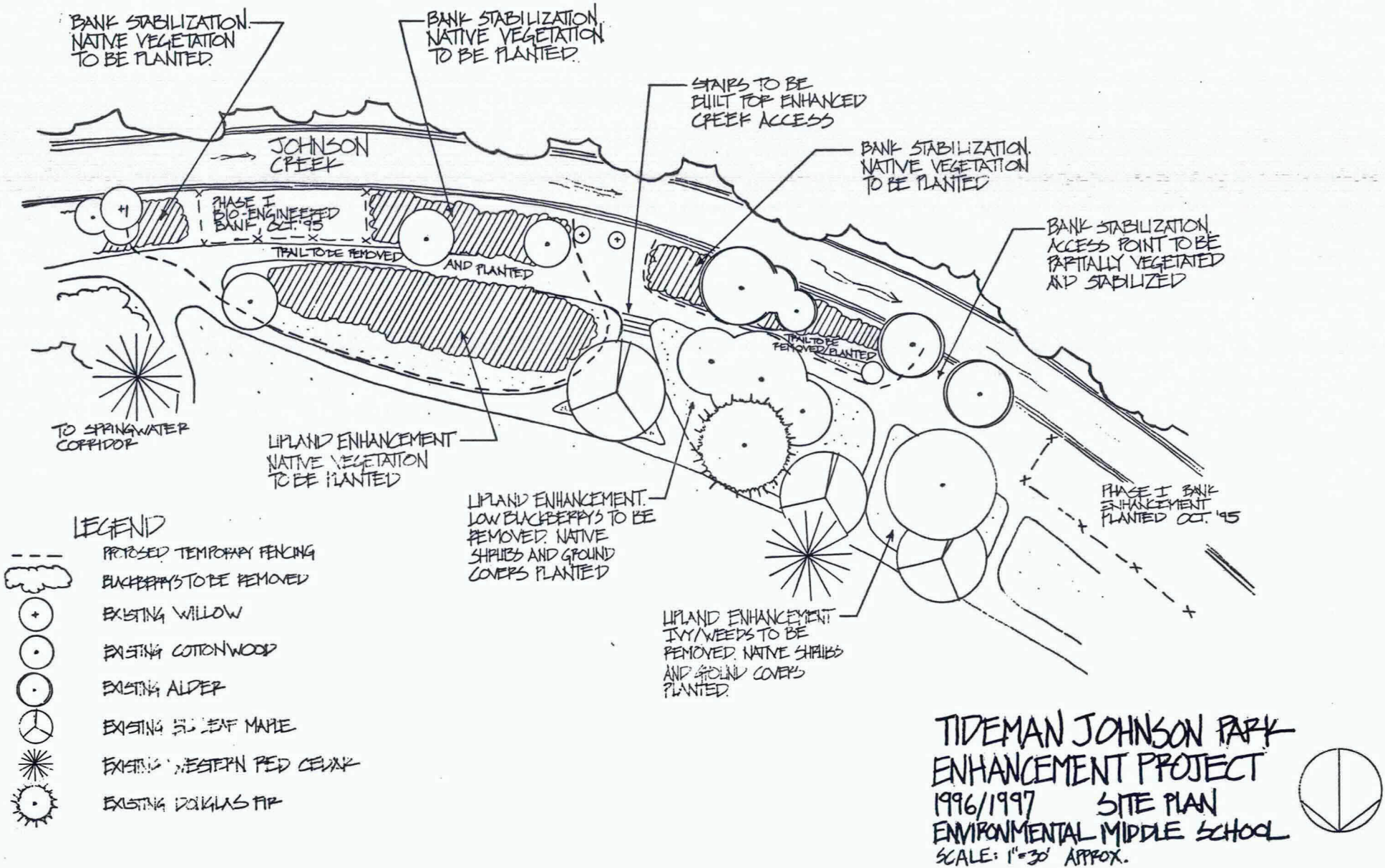
and

**Bureau of Environmental Services
Johnson Creek Program
1120 SW 5th Room 1100
Portland, Oregon 97204**

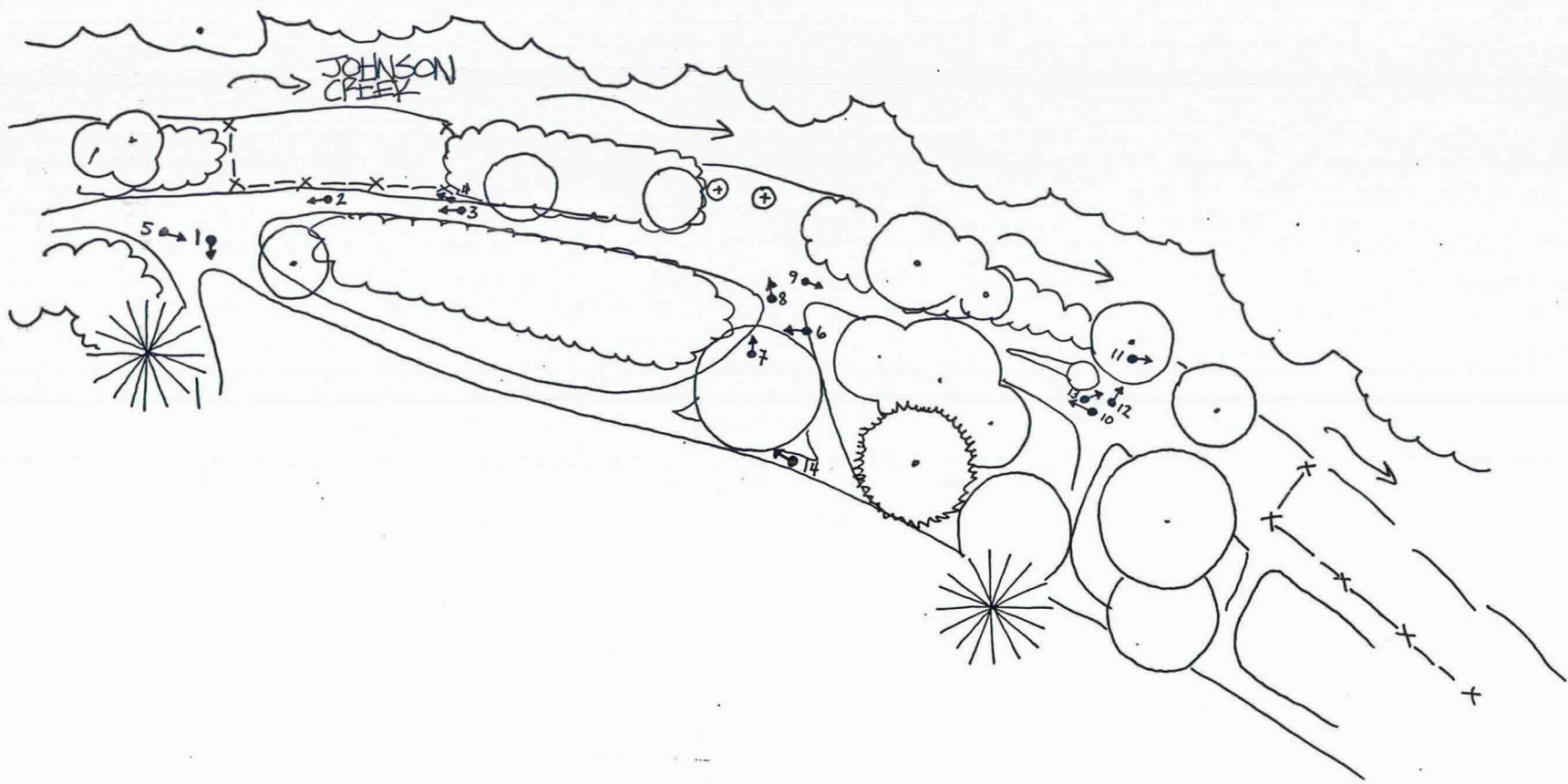
September, 1998



TIDEMAN JOHNSON PARK ENHANCEMENT PROJECT
1. PROJECT AREA MAP



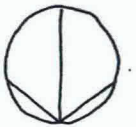
2. PROJECT SITE MAP



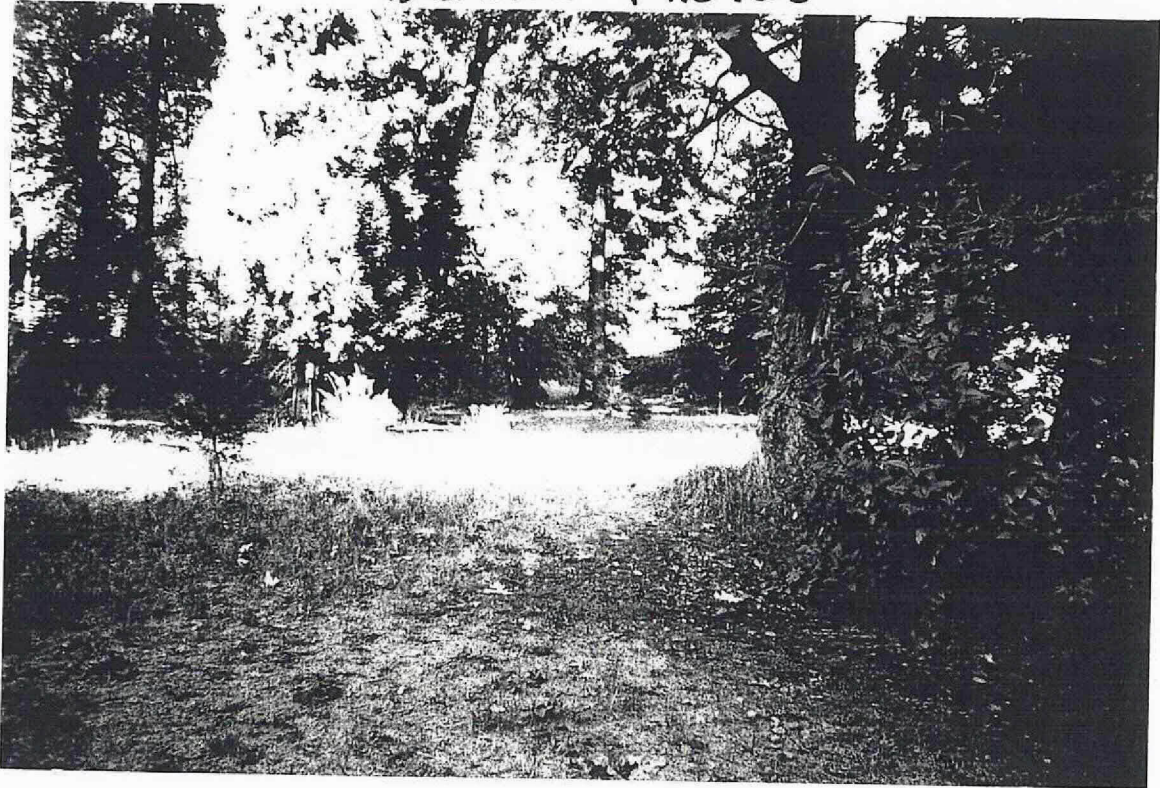
3. PHOTOS AND SLIDES

TIDEMAN JOHNSON PARK
ENHANCEMENT PROJECT

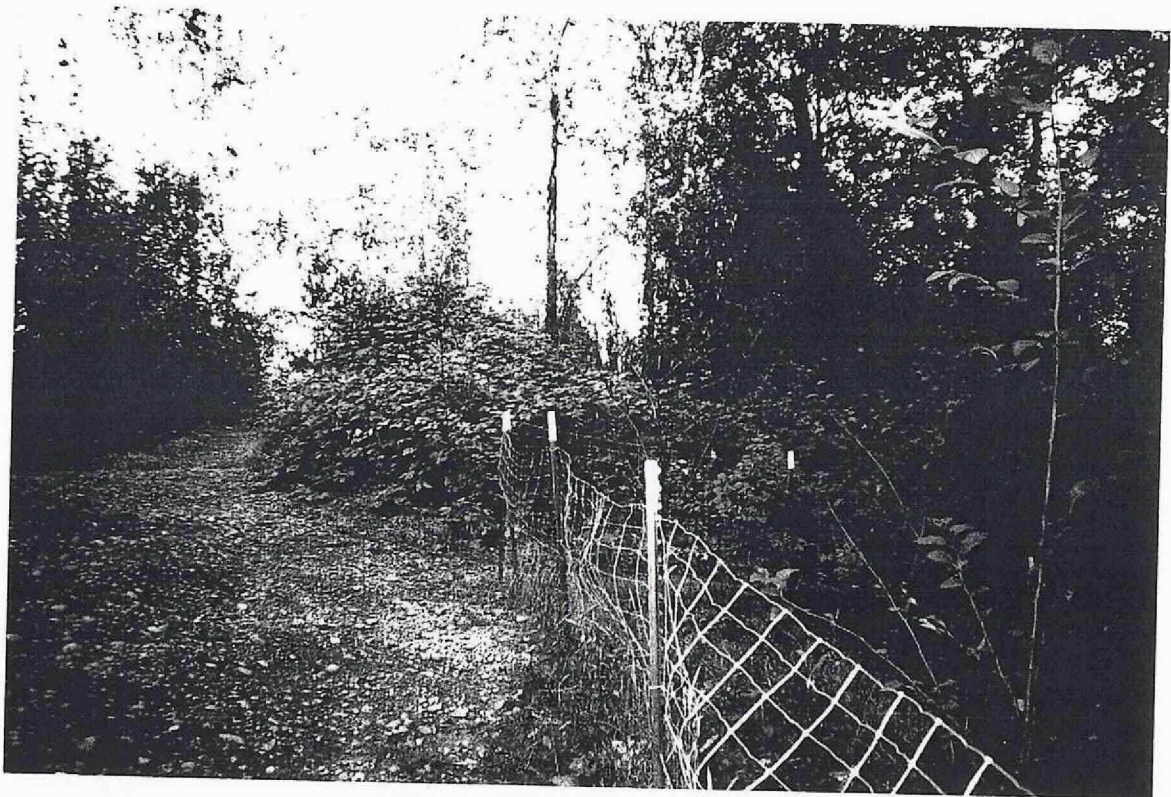
PHOTO MAP SEPT. 1996



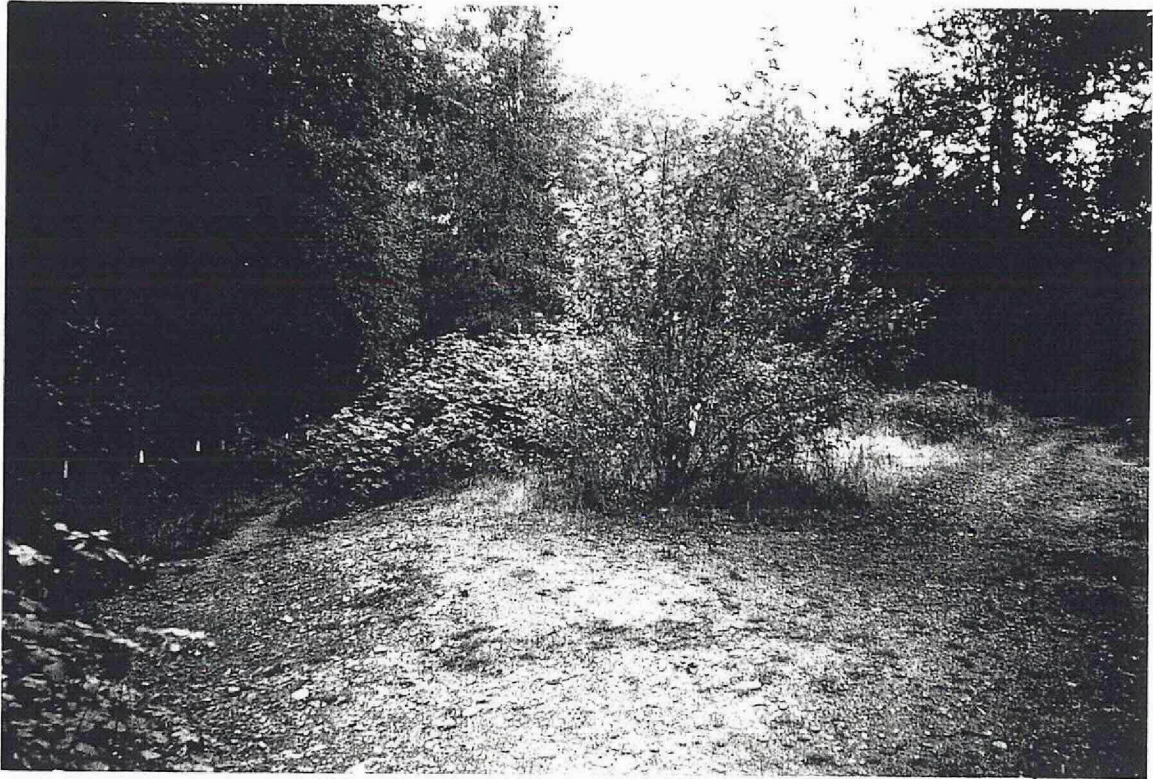
"BEFORE" PHOTOS



1



2



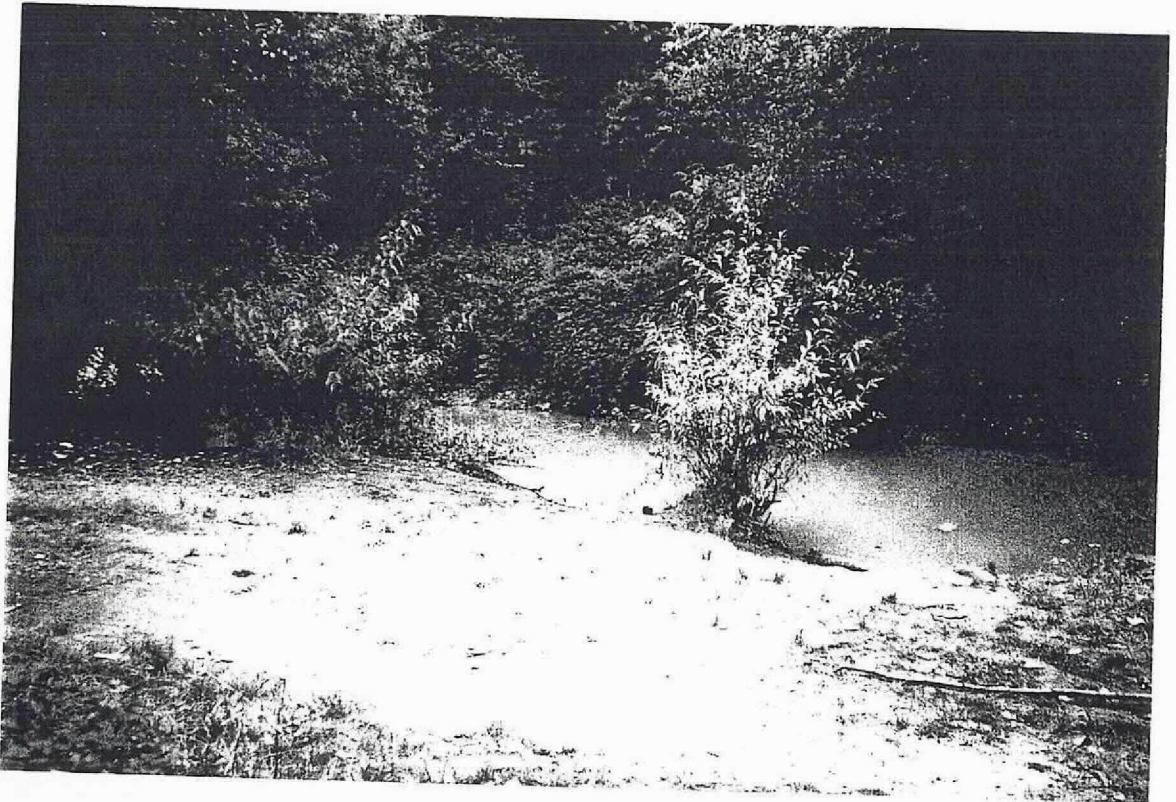
5



6



7



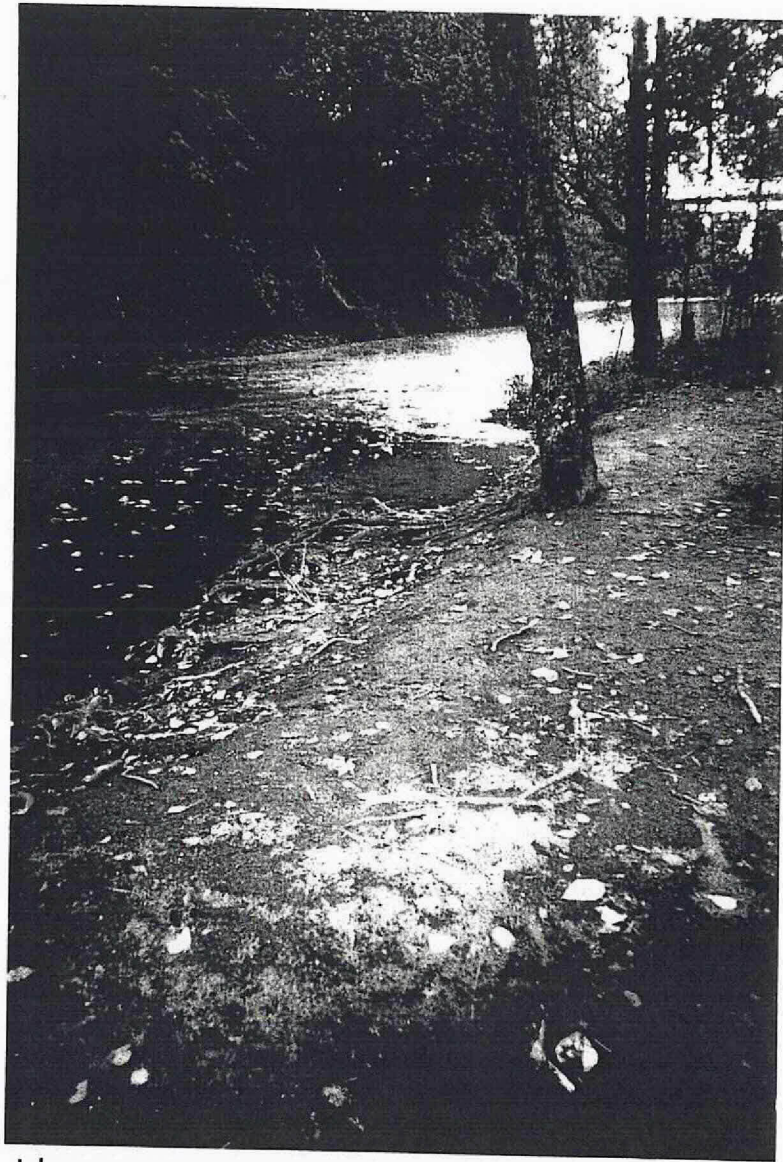
8



9



10



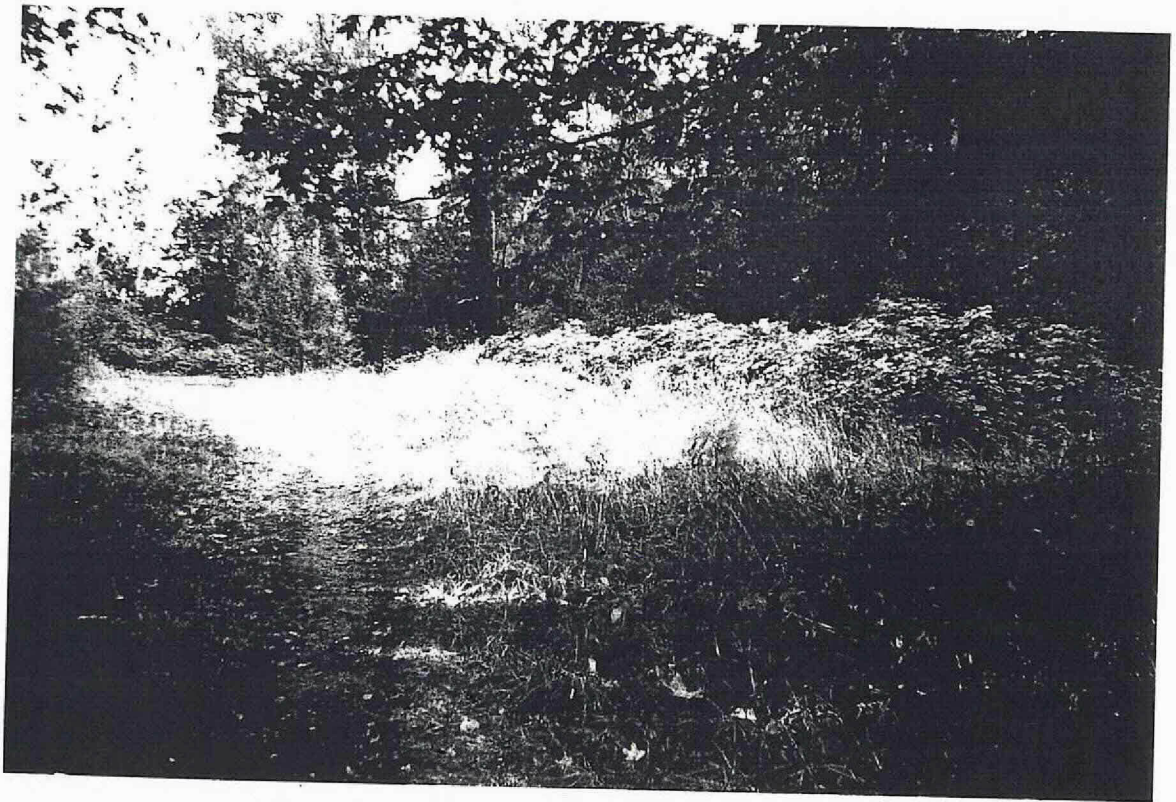
11



12



13



14



TJP SITE 1 6/1/98



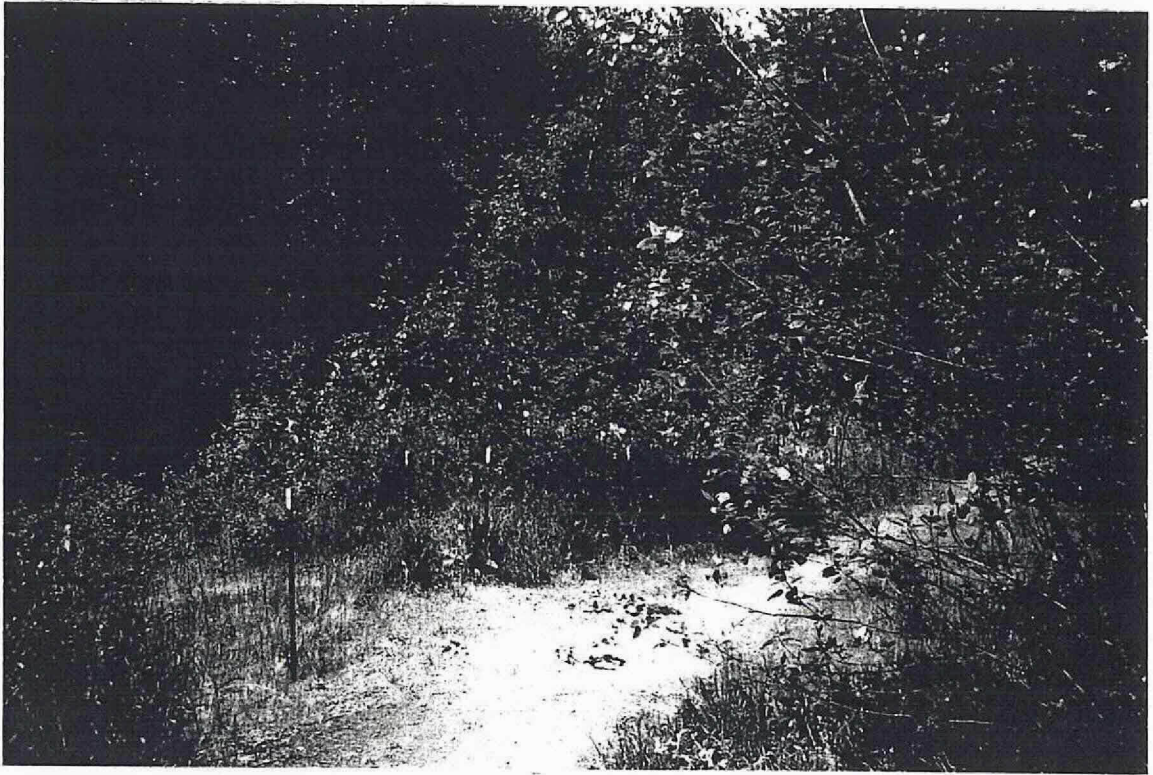
TJP SITE 2 6/1/98



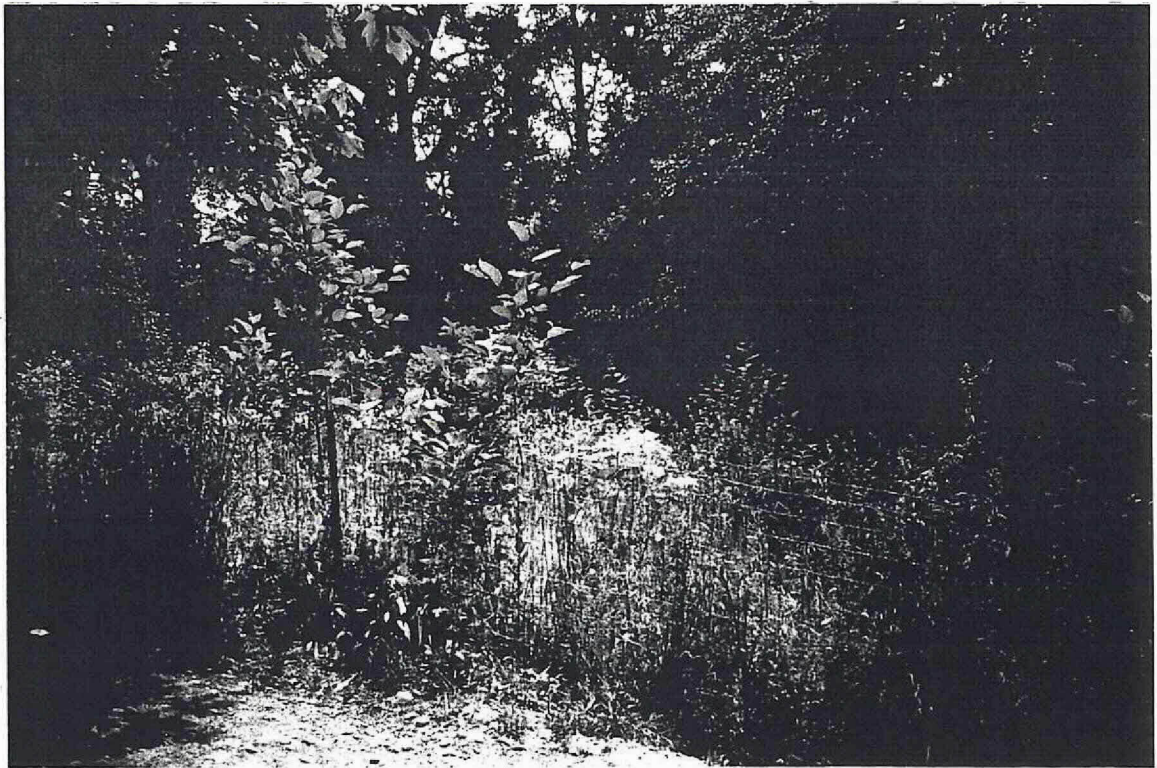
TJP

SITE 2A

6/1/98



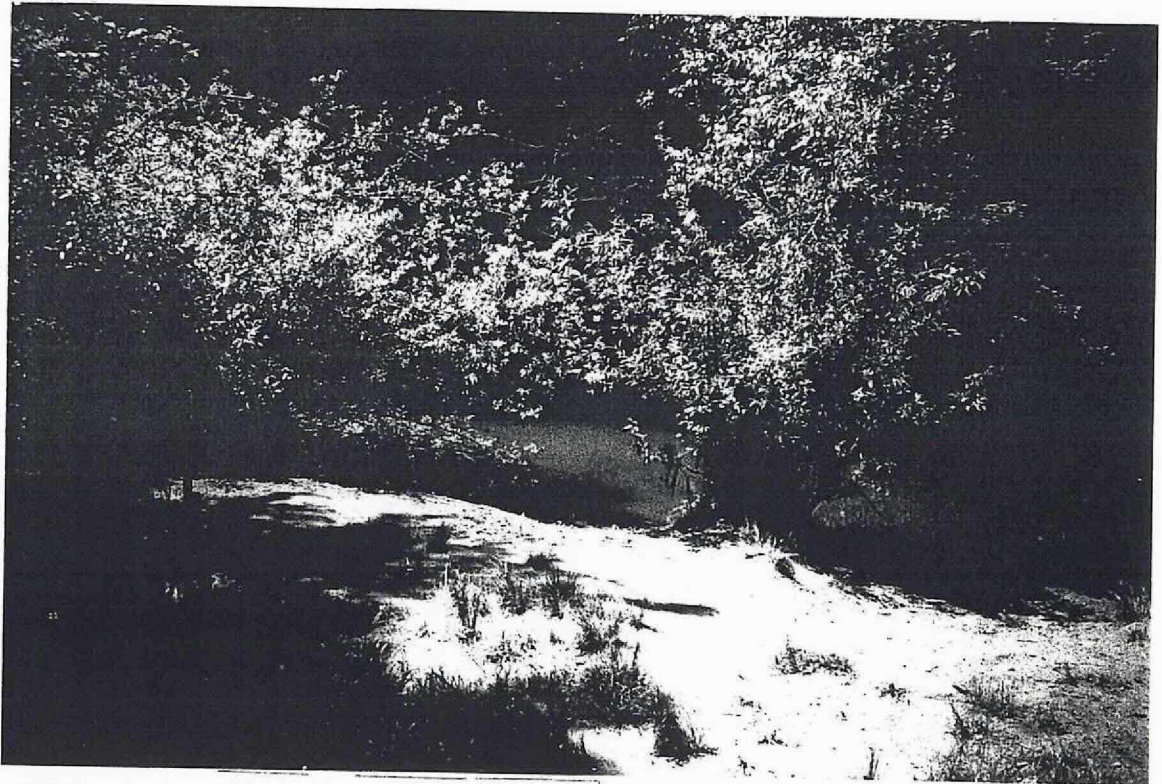
TJP SITE 5 6/1/98



TJP SITE 6 6/1/98



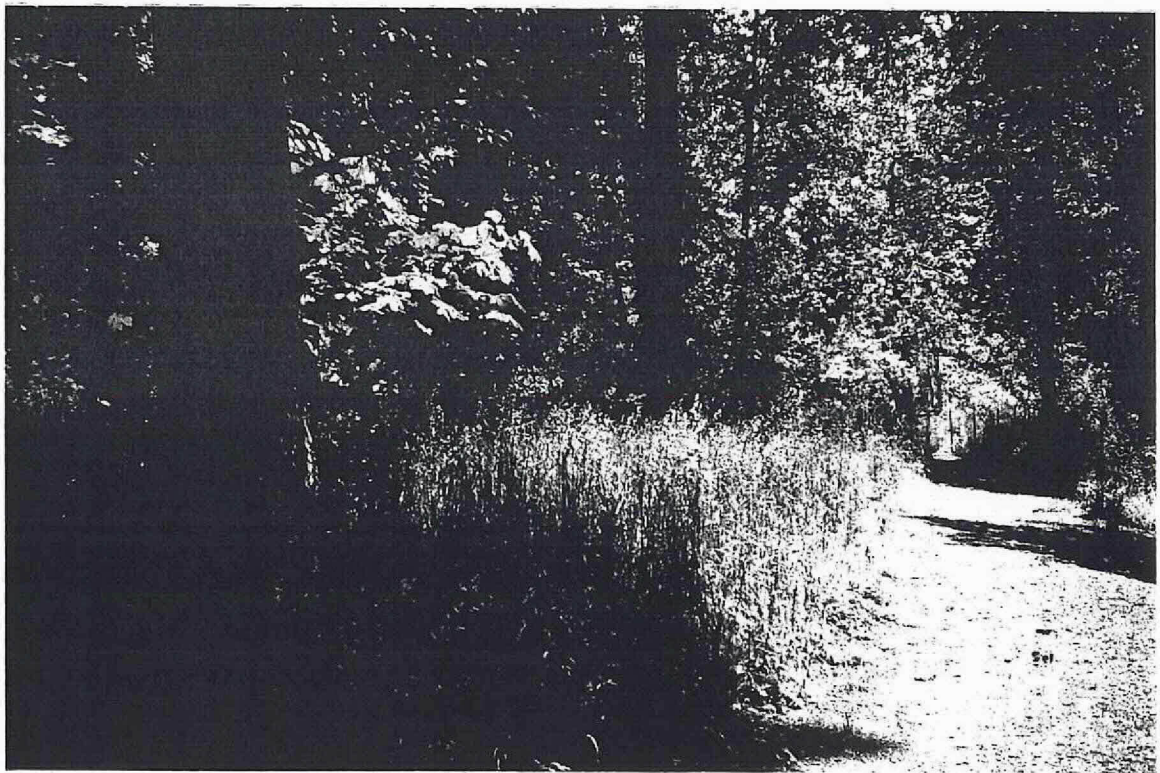
TJP SITE 7 6/1/98



TJP SITE 8 6/1/98



TJP SITE 9 6/1/98

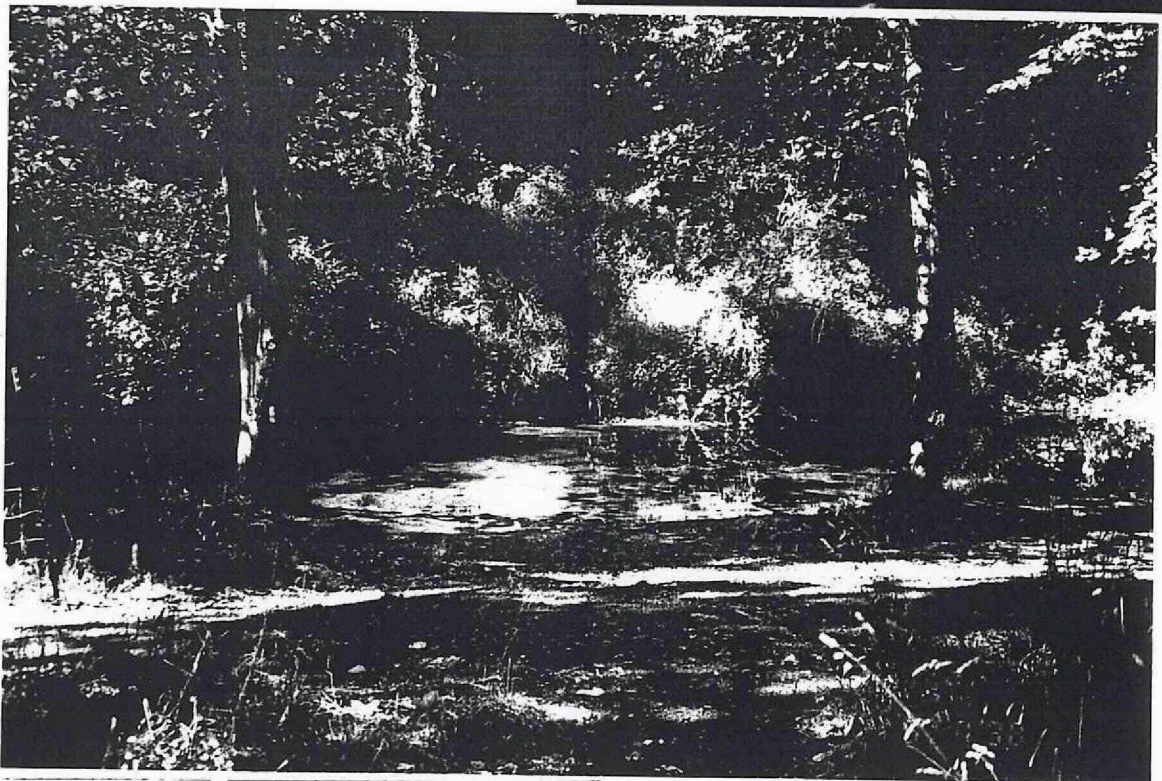
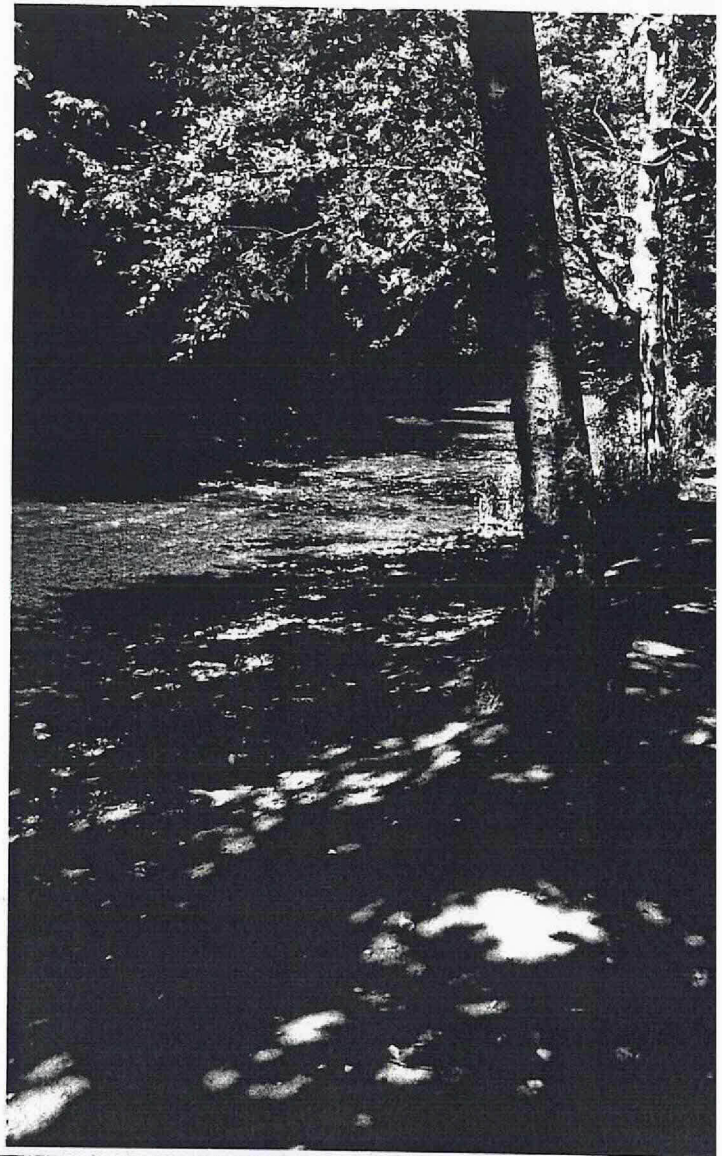


TJP SITE 10 6/1/98

TJP

SITE 11

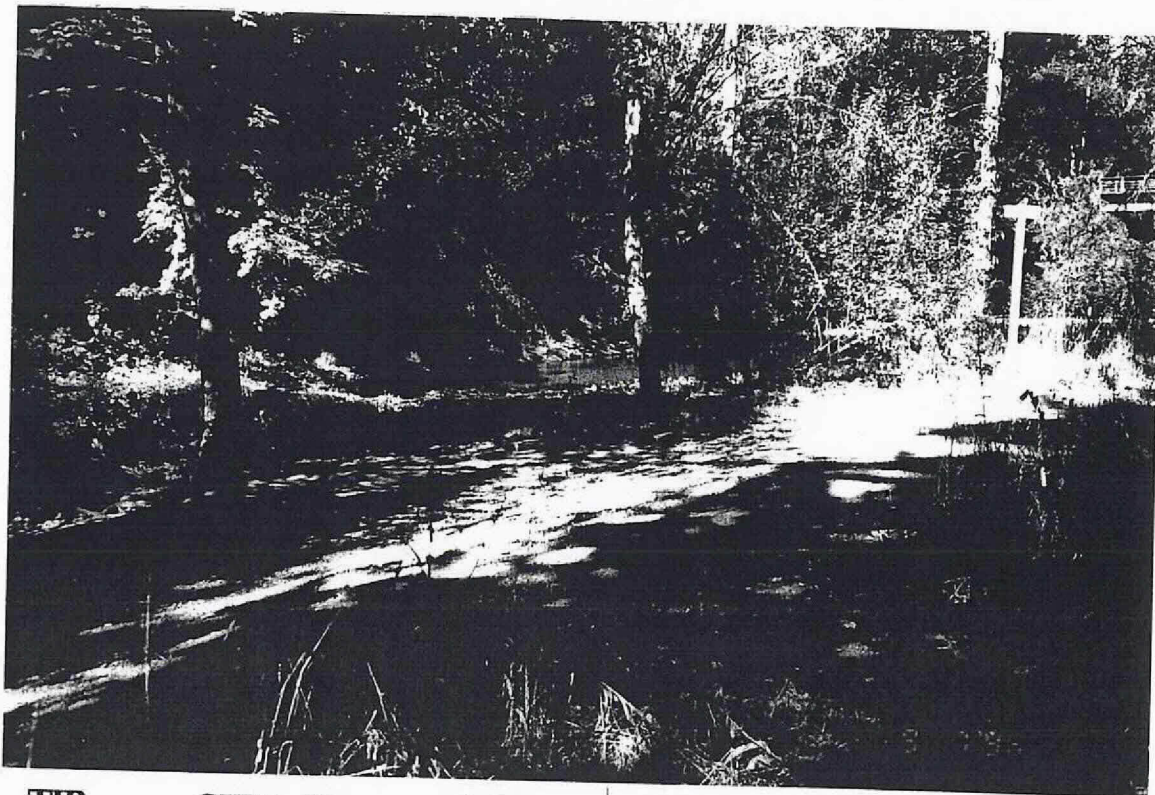
6/1/98



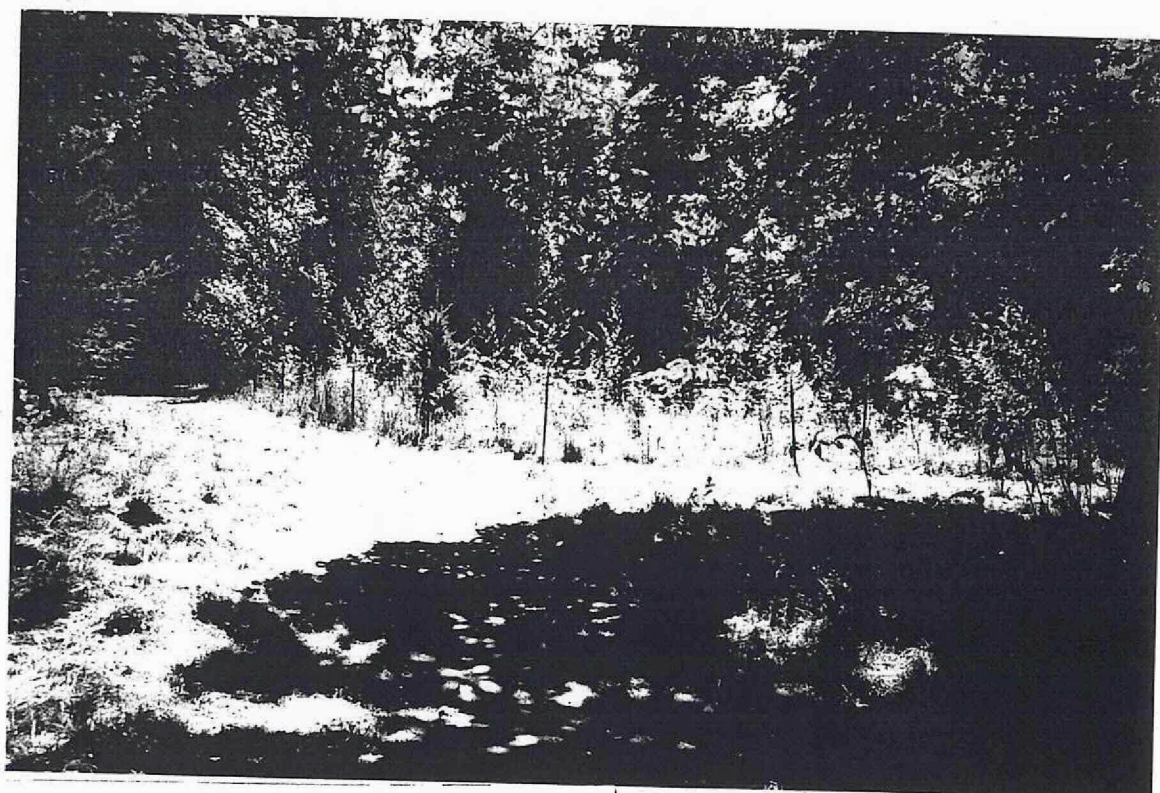
TJP

SITE 12

6/1/98



TJP SITE 13 6/1/98



TJP SITE 14 6/1/98

4. PROJECT DESCRIPTION

a) Location of Project (map attached):

County - Multnomah

Township/Range/Section - T.1S./R.1E./Section 25

Stream Mile - approximately mile 3.0

b) Project Narrative and Objective:

The focus of this project was the enhancement of riparian habitat along Johnson Creek in Tideman Johnson Park, a heavily used park in southeast Portland. The park is located in a canyon area of Johnson Creek, described as the least urbanized site along Johnson Creek west of S.E. 117th Avenue. The park lies on a flat, terraced area within canyon walls facing north and south. Due to this project and other enhancement efforts, creek vegetation is now less dominated by blackberries. Native trees and shrubs such as red alder, big leaf maple, red flowering current, snowberry, red twig dogwood, western red cedar, and douglas fir were added to the existing mixture of willow, cottonwood, grasses, sword fern, and nettles.

The overall goal of the project was to enhance riparian and fish habitat by stabilizing stream banks, using bioengineering techniques, and replacing non-native vegetation with native trees and shrubs. Over the long run, this work will greatly improve the structural diversity of the creek corridor and provide wildlife habitat and fish cover. Stream bank enhancement was incorporated into existing trail use in the park; enhancement also occurred in the upland areas of the park. Site plans, both pre- and post-project, are provided at the end of this report, together with before and after photographs from established photo-monitoring points.

This grant was submitted by the Environmental Middle School (EMS). Classes at EMS have been using Tideman Johnson Park as one of their outdoor study sites. This grant presented an opportunity for students to get more deeply involved in how to enhance the natural areas in their city by taking action. EMS partnered with the City of Portland Bureau of Environmental Services, Envirocorps, Northwest Service Academy (NWSA), and the Portland Bureau of Parks and Recreation (Parks Bureau). The work effort was divided into two parts.

Part 1: Upland Enhancement (March-April 1997)

All of the partners participated in the enhancement of the upland habitat. EMS and BES staff developed the planting plan. EMS students took the lead in manually removing blackberry root balls after the Parks Bureau regraded the area with a backhoe. Students also removed weeds where it was not possible or not environmentally appropriate to remove them mechanically. After the ground was prepared, the site was planted with native plants. Some of the plants were from the EMS nursery grown during the preceding fall and winter. Other native plants came from commercial sources and donations from the BES Columbia Slough Reforestation Project.

Demonstrate enhancement techniques and train students and volunteers to use them

Expose park users to concepts and techniques of natural enhancement in an urban area

Establish a partnering opportunity with the school district, city agencies, youth crews, and neighborhood volunteers

Support multiphased enhancement efforts in Tideman Johnson Park

6. WORKTASKS AND TIMELINES

The following is the "working document" the project team used to track their progress with the various required tasks. It helped the team keep on task and on schedule.

Tideman Johnson Park Enhancement Project (last revised):

Task	lead	date
BES contract with O'Connor	Daniela	1-Jan
EMS contract with NWSA	John, Katheleen	1-Jan
evaluation/grants reporting/budget tracking		1-Jan
invoice processing and payment	John	1-Jan
complete FWS paper work	Alex	1-Feb
Permits (ODFW, city)	Daniela, John	1-Feb
make contacts for spring workday	Alex, Bob, Nancy	1-Feb
establish summer maintenance team	CWSP, Nancy	1-Feb
inventory plants at EMS	Karen	1-Feb
make flyer for community mtg.	Karen	14-Feb
write informational letter	Alex	14-Feb
mail flyer	Alex	14-Feb
calculate silt fence needed	Daniela	14-Feb
calculate jute net needed (7 rolls)	Daniela	14-Feb
calculate fencing needed	Daniela	14-Feb
distribute flyer in neighborhood	John, Karen	17-Feb
finalize planting plan	Michael, Karen, Alex	21-Feb
neighborhood newsletter - contact B. Knudson with Sellwood Bee, Contact Oregonian about calendar info.	Alex	21-Feb
calculate mulch needed	Karen	21-Feb
calculate seed needed	Karen	21-Feb
order plants from George Kral?	Daniela	21-Feb
order plants from nurseries	Karen	21-Feb
order ground cover (wheat seed)	Karen	21-Feb
order jute net	Karen	21-Feb
DMV registration for trailer:ok if under 1800	Alex	21-Feb
define tools needed for march planting	Karen	21-Feb
plan community mtg presentation	PLT	21-Feb
planting plan review	J. Thompson	21-Feb
assign a work group to install wire fence	Karen: Envcorp?	21-Feb

stair design/parks approval	Alex	31-Mar
photo documentation		1-Apr
set tags for planting		1-Apr
pickup/deliver tools		1-Apr
signup, explain tasks		1-Apr
photo documentation		1-Apr
planting I		1-Apr
store tools, equipment and supplies		1-Apr
photo documentation		1-Apr
facilitate work with bioeng. consultant and NWSA	Daniela	1-Apr
set tags for planting		3-Apr
pickup/deliver tools		3-Apr
signup, explain tasks		3-Apr
planting II		3-Apr
store tools, equipment and supplies		3-Apr
set tags for planting		8-Apr
pickup/deliver tools		8-Apr
signup, explain tasks		8-Apr
photo documentation		8-Apr
planting III		8-Apr
store tools, equipment and supplies		8-Apr
set tags for planting		10-Apr
pickup/deliver tools		10-Apr
signup, explain tasks		10-Apr
photo documentation		10-Apr
planting IV and clean up		10-Apr
photo documentation		10-Apr
store tools, equipment and supplies		10-Apr
obtain materials for stairs		15-Apr
assign stair construction crew of 4		15-Apr
 Tideman Johnson Bioengineering Phase		
tag plants on phase 1	karen	Tuesday: 22-Apr
mow phase 1, to prevent seed development		Tuesday: 22-Apr
find willow cutting source	daniela	Tuesday: 22-Apr
schedule parks for for may 7	daniela	Tuesday: 22-Apr
inventory jute and coir at EMS	karen	Thursday: 24-Apr
inventory plants at EMS	karen	Thursday: 24-Apr
order coir, jute and staples (ACF): part 2a needs 30x12 and 40x12 of coir and 100x12 of jute; part 2b needs 120x12 of coir and 100x12 of jute.	alex	Thursday: 24-Apr
find newspaper source for May 31	alex	Thursday: 24-Apr
find source for 2x4x18" stakes		Thursday: 24-Apr
order mulch	alex	Thursday: 24-Apr
contact George Kral about RO Dogwoods, Spirea in can	alex	Thursday: 24-Apr
beaver guards (george krall?) order from ACF if not available	alex	Thursday: 24-Apr
ask parks about whether to replace fence pounder	alex	Thursday: 24-Apr
get 40x40 plastic sheets for cooking bberries	alex	Tuesday: 29-Apr
get chicken wire?	alex	Tuesday: 29-Apr
get fence pounder to replace park's	alex	Tuesday: 29-Apr
deliver mulch from EMS to milport	alex	Tuesday: 29-Apr
confirm tools needed with NWSA: Taylor	alex	Tuesday: 29-Apr

do planting as needed

NWSA

May

Wednesday: 14-

repair farm fence on phase 1

NWSA

May

Wednesday: 14-

extra intall chicken wire around designated trees?

NWSA

May

Wednesday: 14-

take supplies back to Terry's

NWSA

May

Wednesday: 14-

extra, if time inventory what is left and report to Alex

NWSA

May

Wednesday: 14-

May

Return TJP Key to Alex

May 31 planting day

supplies: news paper, beaver guards, mulch, weed wackers,

do weeding

install beaver guards

7. PROJECT BUDGET

	A	B	C	D	E	F	G
1	TJP Habitat Restoration - Project Budget						
2	Category/Item	Grant	Spent	Total Spent	Balance	In Kind	IK Total
3	A. Personnel - TOTAL	4200		3851.35	348.65		900
4	ESD #112 Americorps Wrkrs install fence		2100				
5	2/14 Salary - Karen Shay		360				
6	Fringe - Karen Shay		68.9				
7	3/15 Salary - Karen Shay		490				
8	Fringe - Karen Shay		93.78				
9	4/15 Salary - Karen Shay		550				
10	Fringe - Karen Shay		105.27				
11	5/15 Salary - Karen Shay		70				
12	Fringe - Karen Shay		13.4				
13	BES pays for backhoe					900	
14							
15							
16	B. Materials, Plants, Supplies-TOTAL	4070		2533	1537		97
17	Alex Welsch ck#5129		294				
18	Willowell Nursery ck#5131		190.5				
19	Quail Ridge		208				
20	BES plants		71				
21	Linnton Feed & Seed ck#5086		135				
22	American Compost ck#5126		125				
23	planting flags - Karen ck#5065		22.5				
24	jute matting - Karen ck#5083		409				
25	ACF Geosynthetics		908				
26	temp fencing - Alex		170				
27	gloves - Daniella					97	
28							
29	D. Prchse of irrgtion equip. for plants						
30							
31	E. Purchase of Water for Plants N/A						
32							
33	F. Maintenance Cost for Plants	700		1700	-1000		
34	ESD #112 Americorps Wrkrs install fence		700				
35	ESD #112 Americorps weed and mulch		1000				
36							

8. PROJECT STAFF, PARTNERS, AND VOLUNTEERS

Project Core Group

Karen Shay, Biologist and Environmental Education Specialist, Project Coordinator

Daniela Brod, Portland Bureau of Environmental Services, Enhancement Project Coordinator: project oversight, including coordinating for design, construction management, and installation for EMS students and NWSA crew.

John Richter, Portland Public School District, Environmental Middle School teacher: teacher contact and lead person for EMS, coordinator for EMS field trips to Tideman Johnson Park.

Alex Welsch, Portland Bureau of Environmental Services Community Watershed Stewardship Program.

Other Staff Workers

Steve Bricker, Portland Bureau of Parks and Recreation, Natural Resources Field Supervisor: project maintenance, project review relative to park needs and other project support.

Gwen Schnurman, public involvement consultant: coordinated May 31 neighborhood planting day

Dennis O'Connor, private consultant: bioengineering design and field crew oversight

Kathleen Taylor/Eann Rains, Northwest Service Academy, Americorps Program Coordinator: provided youth crew for stream bank work and maintenance.

Claudia Berg, Abernethy Secretary; processed fund requests

Grants Management, Portland Public Schools; manage and administrate grant funds

Participating Teachers

Rebecca Wagner, Environmental Middle School teacher

Mia Meyers, Environmental Middle School teacher

Teresa Whelan, Environmental Middle School teacher

Monica Semeria, Environmental Middle School teacher

David Menly, Environmental Middle School teacher

Sarah Taylor, Environmental Middle School, Principal: administrative support.

180 Students and 20 Parents

Volunteers - May 31 Planting day (see Attachment "A")

10. WHAT WORKED / WHAT DIDN'T / HELPFUL HINTS

a) What Worked

Hiring a person to act as the field coordinator for the project was very beneficial since a teacher could not be at the site to set up and organize the project with the other classrooms.

The method of rotating six classrooms of students to the site to carry out the work was very successful. On site there was one adult for every 5-6 students.

To cover tool safety and disseminate and return tools, we use the tool wheel method. Students were assembled in a circle around the tool wheel before each work session for an introduction to the tasks for the day and safety concerns. Tools were returned to the tool wheel at the end of the session.

Spring wheat worked well as an affordable fast growing cover crop.

Weeds did not take over on the planted sites due to adequate mulching and maintenance by the local stewardship group.

We achieved an over 70% survival rate for planted plants.

The planning team met weekly at the eclectic Flying Saucer Cafe on SE Division. This was necessary to keep coordinated.

b) What Didn't Work

We created a very detailed planting plan before the students planted. We found this to be too time consuming and hard to follow by the students.

We wanted to eliminate the trail closest to the creek. User's by-passed the fence and recreated the trail.

We should not have stored any materials on the site. These were vandalized and locals made a fort out the materials.

c) Helpful Hints

When designing a planting with the students, instead of exactly following a detailed planting plan, group the plants by habitat requirements and general preferred location and designate the requirements for space.

Make a planting map after the planting instead of spending too much time on a planting plan.

Organize local news coverage on planting days to encourage more enthusiasm from the students. This might result in more ownership of the project.

Attachment "A"

City of Portland
Bureau of Environmental Services
Tideman Johnson Park
Actual Turnout For Park Planting Day (total: 29 volunteers, 6 staff)

Sherri Campbell, 659-7011

Dee Auld, 771-2268

Melba Dlugonski

Elizabeth Groff, 774-2397

Kim Manley, 777-2732

Jeff Kosmoski, 775-4577

Frances and Edward Olthoff, 774-2922

Ken Safe, 774-4453, w/ 4 children

Heidi Alford, 777-1405

Walt Mintkeski, 771-0232

Tler Mintkeski

Amanda Yampolsky, 794-9348

Randall Magahay, 774-9738

Florence Dezeix, 408-9231

Bob Roth, 657-9112

Marty O'Brien, 238-4562

Groups

Richard Myers/Andrea Gambaro, Cleveland High, Biology, 916-5120, Students:

Brent Groth, 774-5908

Ryan La Barre, 231-9381

Sara Earnshaw, 236-5986

Daniel Winter, 775-7498

Phillip Ruiz, 232-4121

Erick Newman, 777-2471

Andrea Gambaro, 249-0213 (teacher)

Staff Attending

Gwen Schnurman

The two Steve's

Daniela Brod/Tim O'Brien

Alex Welsh

Dennis O'Connor