

MONITORING FORM FOR RESTORATION GRANT RECIPIENTS**Name of Project:** City of Happy Valley Wildlife Park**Year Started:** 1997-98**Sponsoring Jurisdiction:** City of Happy Valley**Project Manager:** Jessica Caldwell**Date of Report/Observation:** August 25, 1999**How would you assess the condition of the project?**

Good: The first year plantings had a relatively high survival rate for the first year, about 99 percent. Two years later, the plants continue to have a high survival rate overall, about 95 percent. The second year plantings also have a high survival rate of about 95 percent. Some plants have died off from lack of water. However, the wet summer has helped most of them survive. The drain tiles have yet to be broken. The City is working with a Clackamas County mitigation project to ensure that many of the tiles are broken and plugged in strategic places prior to any further plantings in the wetland.

What are some of the notable successes of the project to date?

The project has been quite successful at establishing native plantings in an area where invasive species were previously dominant. Where 75 percent of the area was covered with invasive species, now about 50 percent is covered with native species. The plants have had a high survival rate. The project won an award from the Oregon Urban and Community Forest Council for best student project in the state. The students at Happy Valley Elementary are learning a great deal about the wetland and look forward to working on projects there.

What are some of the problems you have encountered?

When the original project manager left the City, the project was passed to another person before ending up with the current project manager, Jessica Caldwell. The lack of management continuity caused problems for completing the second year's work in a timely fashion. The plantings were completed, however the drain tile crushing has yet to be completed.

Estimated % of survival following the first year of planting

99.9%

Did you replace/replant after first year?

No

Estimated % survival to date

95%

Which species had the highest survival rate?

No single species had a particularly higher survival rate than others.

What type of irrigation/watering regime was used in the first year?

No watering has been used thus far. The plants were planted in the fall in order to maximum their survival rate without watering. This technique has proved to be successful.

What type of irrigation/watering regime is ongoing?

None

What type of exotics are you controlling for? What is your maintenance plan for these exotics?

The primary exotic affecting the first and second year plantings is the Reed Canary Grass. Public Works regularly mows around the plants with weed eaters to prevent shading out of the new plantings.

Estimate % cover of exotics in project area?

50%

Are there plans to continue the project or expand the project into the future?

Yes. The City is applying for a Salmon Education Grant with Metro to expand the scope of the project to the Mt. Scott Creek corridor. If the grant is received, the City will remove and control for blackberries along the stream corridor and place woody debris in the stream to provide more structure to the stream for salmon habitat.

What type of maintenance does this project receive?

The primary maintenance for the project is mowing. The mowing is selective and done with weed eaters only around the new plantings.

Do you have a wildlife-monitoring component?

Currently, there is no organized monitoring of wildlife in the project area. The City and the school are discussing development of a more organized wildlife-monitoring component, which would be conducted by the school.

Have you seen any increased wildlife usage?

Due to lack of past data, it is difficult to assess whether or not wildlife use has increased on the project site.

Are there any scientific studies on going in the project area?

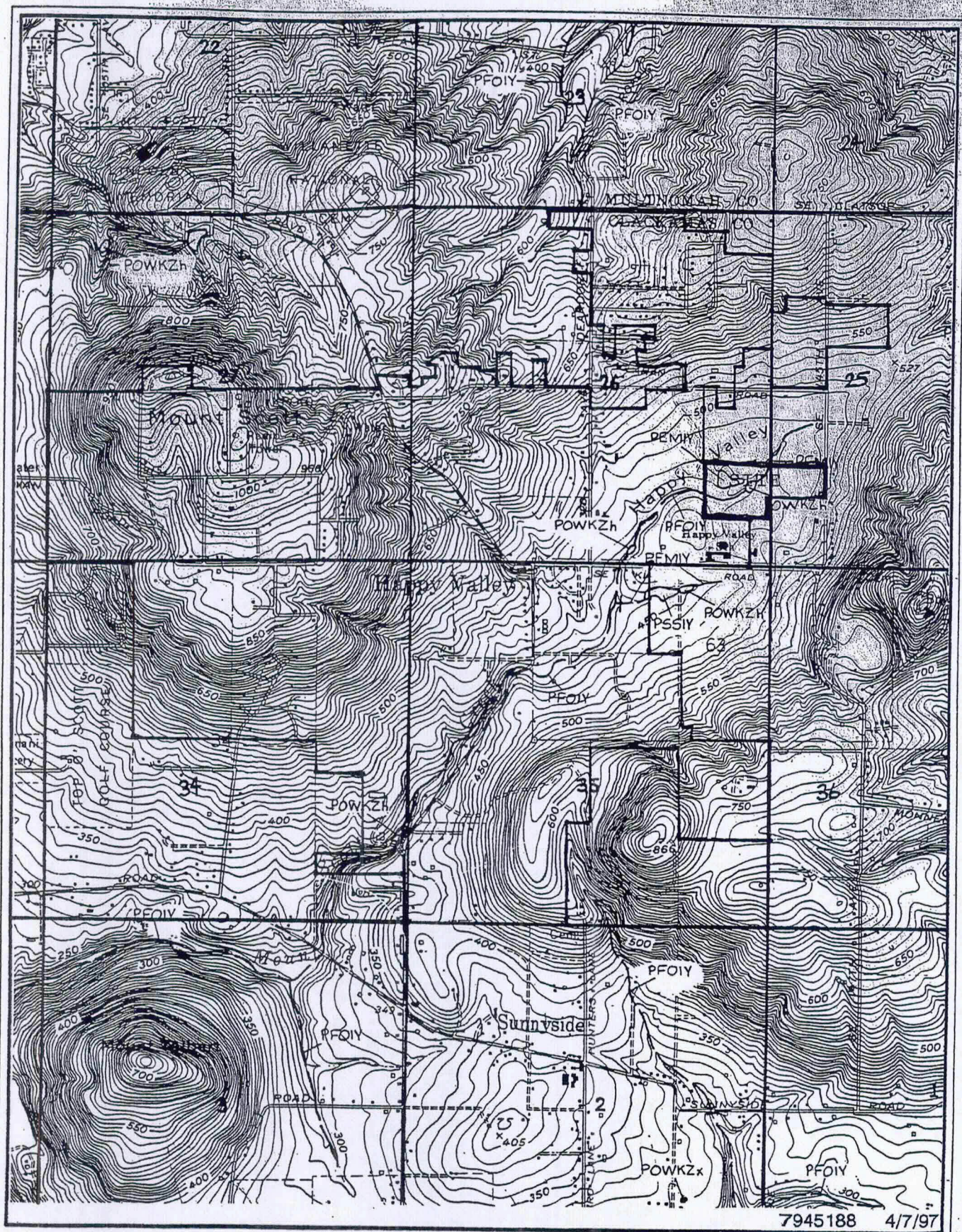
The students monitor the piezometers, however it is not being kept in an organized format at the moment. The City and the school are working to create a more organized piezometer reading schedule.

What, if any, additional costs have been incurred on this project since completion?

Primary costs have been incurred for maintenance of the site and reports related to the grant.

Public Works Staff have spent approximately 30 hours on the site at \$16.00 an hours, \$480.

Planning Staff have spent approximately 60 hours working on the project reporting and grant development at \$32.00 an hour, \$1920.



SITE AND VICINITY
MAP

Monitoring Photos

Photo Point A: Looking NE onto Year I Plantings



Photo Point B: Looking NW onto Year II



Monitoring Photos

Photo Point C: Looking SW onto Year II Plantings



Photo Point D: Looking East onto Year I



PROJECT MANAGERS REPORT FORM

Site Name Happy Valley Wetland

Date 1-22-99

Sponsoring Agency Metro

Contract # 920266

Project Manager Jessica Caldwell, Staff Planner

Description of work to date:

October 21, 22, and 23, 1998:

550 Native Plants were planted in the wetland by Happy Valley Elementary students, their parents, Envirocorps volunteers, City employees, and other volunteers.

Monthly:

Students monitor and record 10 piezometers in the wetland.

Currently:

The City is working with a developer who is planning on performing mitigation in the wetland to determine the exact location of the drain tiles in the wetland and a procedure for their removal. The developer will be removing drain tiles in the wetlands to the north of the area that is proposed to be removed with grant funding. The City will work with the developer's contractors to find and remove the drain tiles in the area designated in the grant proposal. The drain tile removal has proven to be more difficult a task than the City originally imagined. This has caused a delay in the originally proposed May to June 1998 expected date of completion. It is now expected that the drain tiles will need to be completely removed rather than just having holes drilled in them.

The City hopes to complete this work before the summer months. The existence of the drain tiles poses a serious threat to the new plants. Plants planted in 1997 have had a 60 percent failure rate due to lack of water during summer months.

Problems/Concerns:

As mentioned above, removal of the drain tiles has become more difficult than previously expected. In addition, the existence of the drain tiles threatens the survival of the recent plantings.

Are you meeting your workplan/timeline? ☐ Yes ☒ No

If "NO", please explain. Give revised timeline:

Drain tile removal does not have a solid timeline. This will depend on the pace of the developer consulting on the project and their timeline. The City hopes to complete removal before June 1999.

Do you need technical assistance? ☒ Yes ☐ No

Please explain the type of assistance and when it is preferred:

Any technical assistance related to removal of drain tiles would be of great use to the City.

PROJECT MANAGERS REPORT FORM

Site Name Happy Valley Wetland

Date 6-3-99

Sponsoring Agency Metro

Contract # 920266

Project Manager Jessica Caldwell, Staff Planner

Description of work to date:

October 21, 22, and 23, 1998:

Happy Valley Elementary students, their parents, Envirocorps volunteers, City employees, and other volunteers planted 550 Native Plants in the wetland.

April 1999

City staff met with Oregon Department of Fish and Wildlife staff to locate and flag drain tiles.

Monthly:

Students monitor and record 10 piezometers in the wetland.

Currently:

The City is working with a Clackamas County Road Project Group who is planning on performing mitigation in the wetland to determine the exact location of the drain tiles in the wetland and a procedure for their removal. The mitigation project will include removing drain tiles in the wetlands to the north of the area that the City proposed to remove with grant funding. The City will work with the project contractors to find and remove the drain tiles in the area designated in the grant proposal. The Oregon Department of Fish and Wildlife sent two staff people out to the site to help City staff locate the approximate location of the drain tiles. The group flagged the approximate locations of the drain tiles. The City is ready to crush the tiles when the equipment from the other project is on the site. The ODFW staff told City staff that the City would have to use heavy equipment to effectively crush the tiles. The City is not sure when exactly the mitigation project will occur to remove the tiles in park. Therefore, there is currently no timeline for drain tile removal. The City should be receiving a final mitigation plan from the project group soon. I expect that the work will occur this summer when the weather is dry.

Problems/Concerns:

Grass has grown up around new plantings and the piezometers. City crews will need to work on removing some of the grass so the piezometers can be checked and the plantings aren't overtaken by tall grass.

Also, we will not be meeting our deadline for the drain tile removal. I'm not sure whether I should request an extension of our grant, or simply complete the grant with as much as we've done so far. I'm not sure how much money we've spent as I came in on the middle of the process and I'm also not sure if I have all the documentation needed to complete the final report. For example, I can't find hourly logs from the volunteers who worked on the plantings.

Are you meeting your workplan/timeline? ☐ Yes ☒ No

If "NO", please explain. Give revised timeline:

Drain tile removal does not have a solid timeline. This will depend on the pace of the group consulting on the project and their timeline. The City hopes to complete removal before September 1999.

Currently, my records are incomplete for completing the final grant report. I may need additional time to complete the report based on the incomplete information I currently have in my files.

Do you need technical assistance? ☒ Yes ☐ No

Please explain the type of assistance and when it is preferred:

I would like some direction as to how to proceed with an extension of time request or simply completing the grant without all the work complete. I'm not sure how to proceed and I know I will need additional time to complete the final grant report regardless.