

Rachel Curry was our first student under the Saturday Academy structure and proved to be an outstanding addition to our volunteer staff.

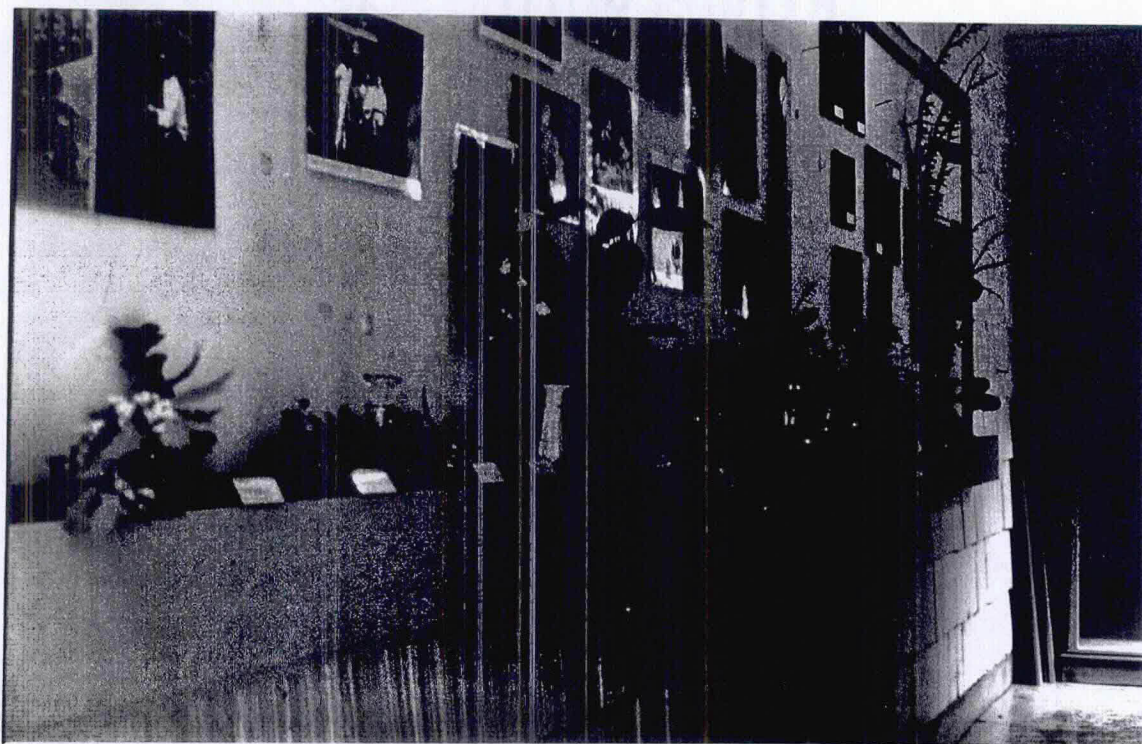
She worked under the direction of Garden Manager, Scott Fairchild, and gained experience in various Garden functions.

As an introduction to plant identification, she researched and labeled appropriately blooming plant samples and displayed them in a temporary trough arrangement in the breezeway. She worked with us for 8 weeks and developed a new display weekly. This trough is to be rebuilt and be a part of our breezeway display project.



We have learned that it is a valuable teaching opportunity for all Garden visitors. To see, learn the name & a brief description enriched their visit greatly, from all the testimony we heard.

Rachel spent approximately 25 hours developing and mounting the displays.



OCTOBER 2000

These pictures show the first display cabinet of three being installed in the breezeway area of the Leach Garden home. The cabinet has just been delivered and is awaiting installation. There is adjustable shelving top and bottom, providing both secured display area and hands-on material for classes on the bottom half.

All children's classes enter an introduction area by going through this sheltered hallway. This gives us an opportunity to add to the information teachers have already given to them in the classroom. The more they know, the better class time is.



COMMUNITY PARTNERS

Among the first displays going in will be materials developed with the Oregon Historical Society on Lilla and John Leach's botanical discovery trips, both in Oregon and abroad. Our Historical Legacy Committee is looking forward to the opportunity to show to the public materials gathered on botanical history, especially here in Oregon, and materials on the history of Johnson Creek and the Lents area. We anticipate working with the Johnson Creek Watershed Council and with neighbors up and down the stream. Al Drake is one example. He grew up in Lents and on Johnson Creek, leaving to teach in a Midwest university, and returning to Lents in his retirement. He has already been involved in volunteer activities at the Garden, and wrote "One Summer" on Johnson Creek.

Our "Riparian and Stream" curriculum, funded by BES, has inspired the collection of materials and maps by our teachers. Now we can show them effectively for the children's classes and begin the education of adults, as well. In this category, we will be working with Kelley School, whose curriculum is often planned around Johnson Creek. The principal, John Danielson, has identified some of his teachers who will begin planning display materials as the first rush of school starting is over. In the past, this school and its teachers have mounted full scale fairs revolving entirely around the Creek and fish and riparian life.

John Bier, Leach Garden Board Member, and natural sciences teacher at David Douglas High School, has built his school environmental club to 80+ members. This means that he works hard to find projects for such a large group. Our location and this opportunity will help focus them on Johnson Creek.

In addition, in house, we have some fine botanical watercolor print collections; models, such as an accurate ceramic collection of mushrooms; several thousand botanical slides by some of Oregon's finest photographers; and private collections belonging to some of our two hundred volunteers.