



Regional Parks and Greenspaces Environmental Education Grant
No. 921707

Habitat Stewards™ Program Partnership
Between the National Wildlife Federation
and

Portland Parks & Recreation Community Gardens

FINAL REPORT

June 2001



Beth Stout
Education Coordinator
1680 N.E. 63rd Avenue
Hillsboro, OR 97124
503-693-8596
503-844-3876 fax
www.nwf.org stout@nwf.org



June 8, 2001

Metro Regional Parks & Greenspaces
Attn: Environmental Education Grants
600 N.E. Grand Avenue
Portland, OR 97232

Re: Grant No. 921707

Dear Metro Friends:

Enclosed with this letter is National Wildlife Federation's (NWF) Final Grant Report for Grant No. 921707. There are two copies of this report, one for Metro and one for the U.S. Fish and Wildlife Service.

Thank you again for the opportunity to pilot NWF's Habitat Stewards volunteer program in partnership with Portland Parks & Recreation's Community Gardens Program. Our partnership has been extremely successful and has, to date, resulted in not one but two training sessions for a total of 22 volunteers trained in 2000 and 21 trained in 2001, and more than 200 hours of volunteer time provided to the program.

We are asking for reimbursement in the amount of \$3087.90. Once again, I appreciate the support we have received from both Metro and USFWS.

Sincerely,

Beth Stout
Education Coordinator

enclosures

Metro Regional Parks and Greenspaces Environmental Education Grant No. 921707
Habitat Stewards Program Partnership
Final Report - Budget
June 2001

Materials & Supplies

2/7/2000	Amazon.com - books	\$ 95.20 115.00
2/9/2000	Peters Office Supply - binders	\$ 125.00
2/10/2000	Amazon.com - books	\$ 107.00
2/21 &		
2/29/2000	Peters - binders & name tags	\$ 52.25
2/25/2000	Amazon.com - books	\$ 46.80
2/28/2000	Refreshments/Journal books	\$ 23.97
3/3/2000	East Multnomah Soil & Water District - Portland Plant Lists	\$ 150.00
3/3/2000	Fred Meyer - workshop supplies	\$ 20.00
3/13/2000	Cake for training class	\$ 9.99
6/13/2000	Justin Boe - purchase books	\$ 66.52
6/23/2000	Rob Marhill - plants for garden	\$ 40.54
9/25/2000	NWF - Clinton Garden certification & sign	\$ 37.00
9/25/2000	Clinton Garden plants	\$ 27.92
10/9/2000	Garden markers	\$ 16.78
4/25/2001	NWF - Training materials	\$ 125.00
5/31/2001	Portland Nursery - Native Plants	\$ 70.57
	<u>Subtotal</u>	<u>\$1014.54</u> 1034.34

Professional/Outside Services

3/13/2000	8 \$50 honoraria for speakers for training	\$ 400.00
7/1/2000	Justin Boe - total compensation	\$1109.33
9/15/2000	4 Honoraria	\$ 125.00
3/7/2001	Print Habitat Stewards brochures	\$ 439.03
	<u>Subtotal</u>	<u>\$2073.36</u>
	Total	\$3087.90 3,107.7
	<u>Grant Amount</u>	<u>\$3105.00</u> 3150
	Amount to be Reimbursed	\$3087.90 3107.7

**FINAL REPORT
HABITAT STEWARDS™
ENVIRONMENTAL EDUCATION GRANT NO. 921707
NATIONAL WILDLIFE FEDERATION**

Summary of Project and Accomplishments

The Habitat Stewards project funded by this Regional Parks and Greenspaces Environmental Education grant is a partnership between the National Wildlife Federation (NWF) and Portland Parks & Recreation's Community Gardens program (Parks). With the support of NWF, Parks hosted two Habitat Stewards training sessions, one in Spring 2000 and one in Spring 2001, reaching a total of 43 participants. These participants continue to "pay back" volunteer hours by assisting in the creation and maintenance of habitat sites at community gardens and by participating in outreach activities designed to educate community gardeners, children, and the general public about gardening for wildlife.

Habitat Stewards is the volunteer training and mentoring arm of NWF's Backyard Wildlife Habitat™ program. See attachments. Through this program, NWF assists individuals, families, and organizations in discovering wildlife and connecting with nature through the creation of wildlife habitat at home, school, and places of work, worship, and recreation. Parks promotes and provides gardening and greening opportunities for the physical and social benefit of the people and neighborhoods of Portland.

The partnership between NWF and Parks was designed to provide training to volunteers who would assist in increasing the number and quality of wildlife habitat sites at community gardens in Portland; help maintain those sites; educate other community gardeners about the importance of gardening for wildlife and how to incorporate habitat in community gardens; and to involve children in gardening for wildlife activities at community gardens.

The specific objectives outlined in our grant application were met as follows:

- **Helping to prepare the Fulton, Clinton and Berrydale Community Gardens for habitat creation and enhancement, including mapping, site preparation, planting and labeling plants, habitat maintenance, and community outreach.**

Although the Berrydale Community Garden was already a certified habitat site, the efforts of Habitat Stewards and other volunteers have led to enhancement of the site. Both the Clinton and Berrydale Community Gardens have been certified with NWF as a result of the Habitat Stewards program (see below for more details).

- **Training between 15 and 25 Habitat Stewards.**

We exceeded this objective by training 43 Habitat Stewards in two training sessions.

These training sessions featured guest speakers who focused on topics including: pollinator gardens; urban wildlife; watersheds; habitat design; native plants, nature interpretation; native plant propagation; fundraising; and visits to habitat sites including backyards, schools and community gardens. See attachments: training schedule for February/March 2000 and for March/April 2001. Changes to the format and content of the second training were made based on feedback received from participants in the first training. *See below.*

Sample Habitat Stewards Profiles

Amy Schroth and Gerald Decker, two Habitat Stewards from the Spring 2000 training, have met regularly since then to organize restoration plans for the Fulton Community Garden habitat area. Once used by homeless people and as a dumping ground by the gardeners, it is being restored to a more diverse ecosystem. Taking one section at a time, Amy and Gerald have removed extensive coverings of blackberry, morning glory, clematis and ivy. Forty cedar and Douglas-fir saplings have been planted and a new path meanders through the restoration area. A ground-level water source and 3 logs serve as a focal point and as additional habitat features.

Steven Ninemire and Terrie Ezzat have been working at the Fulton site since their Spring 2001 training. They have organized two work parties to try to control invasive marsh marigold, morning glory and clematis. They have weeded around all the existing native plants and have placed thick layers of cardboard and mulch to improve the soil and control weeds. Both visit the garden at least once a week and are creating a work plan for the site.

- **Asking each volunteer to evaluate the training and their payback activities and incorporating their ideas into future programs.**

The following is a sampling of suggestions made by participants regarding future trainings:

- Clarify how each class ties into the entire training to make sure there is a thread that runs through the entire program;
- More hands-on activities, including site visits.
- Set aside networking time for participants.
- Arrange the classroom in a circle rather than in rows.
- More clarity on volunteer payback opportunities, including a list of projects available.
- Provide less manual labor payback hours and more knowledge-oriented activities where the expertise provided in the training can be used.

Some of these suggestions were incorporated into the Spring 2001 training.

- **Certifying the Fulton and Clinton Community Gardens as NWF Backyard Wildlife Habitat sites and enhancing the existing certified habitat at the Berrydale Community Garden.**

Both the Fulton and Clinton Community Gardens were certified as NWF Backyard Wildlife Habitat sites as a result of the Habitat Stewards program. See attachments: Application for Certification for the Fulton and Clinton Community Gardens. The Berrydale Garden, which was a certified habitat site, has been enhanced significantly as a result of the Habitat Stewards program. See attachment: Montavilla News, "A Secret Garden in Montavilla."

To date, Habitat Stewards have paid back a total of more than 200 hours at community garden sites and special events. These payback opportunities have included:

September 23, 2000	Clinton Community Garden work party (6 Habitat Stewards)
October 7, 2000	Home Is Where The Habitat Is public workshop (3 Habitat Stewards)
March 10, 2001	Habitat Awakening at Fulton Community Garden (3 Habitat Stewards)
April 20, 2001	Dishman Center Earth Day (2 Habitat Stewards)
April 21, 2001	Fulton Seed and Plant Exchange (1 Habitat Steward)
April 24, 2001	Clinton clean-up (1 Habitat Steward)
April 28, 2001	Procession of the Species (2 Habitat Stewards)

In addition, more community gardens are gearing up to become habitat sites. These gardens include:

Sewallcrest Community Garden (S.E. 31st & Market)

A steward from the 2001 training is working on a design for a habitat area here. She hopes to involve the adjacent Edwards School, neighborhood groups and community gardeners.

John's Community Garden (N. Edison & Johns)

The creation of a habitat site here is under way. Work has begun with a landscape architect and the area is being weeded and contoured to create a path and variations in the terrain. Donations of concrete will be used to lay the walkway and rocks and logs will be placed around the area, as well.

- **Establishing Habitat Stewards community outreach activities, including teaching adult and youth members of the community about the habitats, guiding those community members in participating in habitat projects, and recruiting new volunteers.**

Habitat Stewards participated in a variety of outreach activities and the Habitat Stewards program hosted an October 7, 2000, special event entitled "Home Is Where The Habitat Is" which featured guest speakers on gardening for birds, hummingbirds and butterflies and using native plants in the habitat. More than 30 members of the public participated in this event, which also featured a tour of the Clinton Community Garden and its habitat site. See attachments.

During the summer of 2001, Westside Youth and Family Services (a program with the Neighborhood House) will come to the habitat site at the Fulton Community Garden every Monday for 1 hour and 15 minutes. The program aims to provide middle school age children with the opportunity to observe and explore nature through activities, games and service projects. The children will plant native plants and create a mural on the Fulton garden shed.

How We Did It

Following the timeline/task outline in our grant proposal, we were able to successfully organize the Spring 2000 Habitat Stewards training. We sent out press releases that resulted in numerous newspaper calendar notices and other publicity. We also used e-mail and the internet to advertise the training. We did the same for the Spring 2001 training.

Grant funds enabled us to purchase materials and supplies and to pay for speakers for training sessions and for a temporary, part-time project assistant in 2000. In 2001, Parks provided the in-kind services of an Americorps project assistant. These assistants were invaluable in helping to make the project a success because they were able to devote their time and attention to nurturing the Habitat Stewards volunteers and to organizing meaningful volunteer opportunities for them. See Attached Budget.

Especially useful for the Spring 2000 training were the resource materials we were able to purchase for each Habitat Steward. These included bird and butterfly field guides and native plant books. Although fewer resource materials were provided for the Spring 2001 training, we did provide complete National Wildlife Federation Habitat Stewards training kits to each participant.

Parks has been focusing on finding meaningful volunteer opportunities for all the Habitat Stewards and has begun to expand the number of Community Garden sites with potential for habitat projects. See attachments. They have successfully involved additional community volunteers in all of the habitat projects. For example, at the Habitat Awakening at the Fulton site, along with three Habitat Stewards, there were 10 additional volunteers. And on May 5, 2001, a Clinton work party attracted three Habitat Stewards and one community volunteer.

Successes, Challenges and Helpful Hints

We were very successful in attracting high-quality participants to both trainings. However, we were on a learning curve when it came to providing quality volunteer opportunities.

The Habitat Stewards were looking for a “niche” where they could apply what they learned in the training at locations convenient to where they lived and with the potential for making a difference at that site. NWF and Parks struggled with balancing providing those opportunities and, at the same time, managing all of the other programs they are responsible for.

Parks’ hiring of AmeriCorps Volunteer Kirsten Gellella as the program’s volunteer coordinator has helped the program immensely in balancing the needs of the Habitat Stewards and the realities of providing and organizing volunteer opportunities. Any organization interested in starting a volunteer program should work toward the goal of having a volunteer coordinator.

The Habitat Stewards program has provided Parks with outstanding volunteers who are dedicated to the creation and enhancement of habitat sites at community gardens in Portland. Parks is now moving toward involving those volunteers in education and interpretation activities at various community garden sites. NWF has benefitted from this program in that these 43 volunteers are spokespersons for gardening for wildlife and for the need to save a place for wildlife in places like community gardens and they will continue to outreach to the general public as they participate in activities organized by Parks.

ATTACHMENTS & TRAINING...

Habitat Stewards Training Schedule - February 22, 2000

Facilitators: Beth Stout, National Wildlife Federation
Leslie Pohl-Kosbau, Portland Community Gardens
Justin Boe, Habitat Stewards Assistant

Saturday, March 4th

8:30am-4:30pm

8:00 - 8:30 AM Set Up (Beth, Leslie and Justin)

Beth will bring: refreshments and cups, slide projector, journals, binders & resources, sign-up sheets

Justin will bring: butcher paper & tape, map & dots, ice-breaker supplies

Leslie will bring: community asset mapping information, volunteer opportunity list

8:30-9:00 AM Sign-In
Materials Pick-Up
Coffee & Refreshments/Sign-Up for Monday, Wednesday & Saturday
Snacks

9:00 - 10:15 AM Welcome & Introductions

- **WELCOME** on behalf of NWF and Parks (Beth & Leslie - 5 minutes)

National Wildlife Federation (Beth - 5 minutes)

- Portland Parks & Recreation Community Gardens (Leslie - 5 minutes)

- Review list of volunteer opportunities.

Habitat Stewards Program (Justin - 5 minutes)

Program Goals/Objectives Met:

Be familiar with all of the focus projects within the Backyard Wildlife Habitat Program, including Schoolyard Habitats, Habitats at the Workplace, and Community Wildlife Habitats.

Have established a relationship with a community group that they plan to assist in the creation or conservation of wildlife habitat.

Know what resources are available to them locally and nationally to aid in the completion of their projects. Resources should include books, videos, professionals, other similar projects, and fund-raising know-how.

- **INTRODUCING OURSELVES** (Leslie - 15 minutes)

Go around the room - everyone has 1 minute to say who they are, why they are here, and what they expect from the training.

- **MATERIALS (Beth -5 minutes)**

- Binder
- Name Tags
- Resource Materials

- **LOGISTICS (Justin - 5 minutes)**

- Schedule
- Meeting Rooms
- Restrooms
- Refreshments & Coffee

Habitat Stewards will provide coffee/other drinks for all sessions. We will provide refreshments for first session. We will have a sign-up sheet for participants to bring refreshments for the group for Monday, Wednesday & second Saturday sessions.

- **EXPECTATIONS (Beth - 15 minutes)**

- NWF Volunteer Commitment form

These are in the front of your binders. Please read along with me and then sign and date the bottom and pass forward for me to collect. The last bullet, "Assist in the certification of one schoolyard, one workplace, or three backyards within one year of attending this training," is changed for this program to read:

"Assist in the certification of one Portland Parks and Recreation Community Garden and/or three backyards within one year of attending this training."

- Attendance/Absence/Make-Up Assignments
- Active Participation
- Journals/Homework

All participants are required to keep a Habitat Stewards journal. Journal

books will be provided. This journal should include:

- Homework assignments and daily entries for each day of training, reflecting on the participant's experiences that day; artwork (optional); newspaper or magazine articles or other relevant materials the participant wants to save for future reference. Journals will be collected on the last day of training and will be returned to participants in the mail.
- Final project - last day of training
- Volunteer Projects **(Leslie)** /Hours/Certifying your own backyard! **(Beth)**
 - 4 hours of payback for certifying your own backyard
- Feedback/Evaluations

10:15 - 10:45 AM Ice-Breaker Activity (Justin)

10:45 - 11 AM Break

11 - 11:30 AM NWF Backyard Wildlife Habitat Video (Beth)

11:30 - 12:15 PM Introduction to Habitat (Indoors)

- *Presenter: Beth Stout*
Activity: "Habitat for Sale" from NWF's Animal Tracks

<u>Program Goal/Objective Met:</u> Fully understand why we are concerned about habitat loss, and why it is critically important to restore or create it.

12:15 - 1 PM LUNCH

1 - 2 PM Introduction to Habitat (Outdoors)

Presenter: Rick Brown

2 - 3 PM Designing Gardens for People and Wildlife: Incorporating Food and Medicinal Plants into the Wildlife Habitat Garden

Presenter: Judy Bluehorse Skelton

3 - 3:15 PM BREAK

3:15 - 4:15 PM Community Asset Mapping & Volunteer Opportunities (Leslie)

- ½ hour: Volunteer Opportunities
- ½ hour Community Asset Mapping (Small groups)

4:15 - 4:30 PM Wrap-Up

- Review the day & journal assignments
- Remind participants of date/time of next meeting

Monday, March 6th
6:30-9:30pm

Program Goal/Objective Met: Develop a good understanding of the various habitat types in their area for purposes of teaching others; how to distinguish one habitat from another, what locally native plants are associated with each, what animals birds, insects, etc., are associated with each, and how to replicate each.

6:00 - 6:30 PM Set-Up (Beth, Leslie and Justin)

Beth will bring: coffee, tea, etc., slide projector
Justin will introduce speakers

6:30 - 6:45 Welcome, Review & Questions (Beth, Leslie and Justin)

6:45 - 8 Pollinator Gardens Aren't Just for Butterflies Anymore!

***Presenter:** Glen Andreesen/Metro*

***Habitat Stewards Handout:** Butterflies and Moths Golden Guide*

8 - 8:15 BREAK

8:15 - 9:30 Urban Wildlife

***Presenter:** Holly Michaels, Wildlife Diversity Biologist, ODFW*

***Habitat Stewards Handout:** Mac's Field Guide to Northwest Park &*

Backyard Birds

Wednesday, March 8th

6:30 - 9:30 pm

Program Goal/Objective Met: Understand the geological history of their area, the characteristic soil types, and how to distinguish one from another. Recognize the link between site conditions and the plants that will grow there.

Understand the genetic importance of landscaping with locally native plants and wildlife uses of those plants, how to obtain locally native plants, and how to plant and care for them.

6 - 6:30 PM

Set-Up (Beth, Leslie & Justin)

Beth will bring: coffee, tea, etc.

Justin will introduce speakers

6:30 - 6:45

Welcome, Review & Questions (**Beth, Leslie and Justin**)

6:45 - 8

The Natural History of Portland

Presenter: Jay Mower

8 - 8:15

BREAK

8:15 - 9:30

Northwest Native Plants for Community Garden Habitat Sites

Presenter: Linda McMahon, Berry Botanic Garden

Habitat Stewards Handout: Portland Plant Lists

Saturday, March 11th
8:30am - 4:30 pm

Buy
 cake
 strawberries
 apple
 sunflower seeds
 berries

Program Goals/objectives Met:(1) Understand the basic process of habitat creation, including the four necessary components of food, water, cover, and places to raise young. (2) Be able to guide people through a site inventory process, explaining why each component is important, various methods for mapping the site, and how to use this information to guide development of their own wildlife habitat projects.

8 - 8:30

Set-Up (Beth, Leslie and Justin)

Beth will bring: coffee, tea, etc., slide projector, final project supplies, evaluations, volunteer opportunity sign-up, sheet cake for graduation

8:30 - 9:15

Welcome, Review & Final Assignments (Beth, Leslie and Justin)

Assign participants in teams of two to prepare a brief (5 minute) interpretive talk (we will provide resources & props) on a plant or animal. We will tell them who the audience is and what the goal of their presentation is. Talks should include habitat needs for animals and wildlife value for plants.

→ go over homework
 → give out evaluation

Species

Audience/Goal

- | | |
|---|------------------------------------|
| (1) Western Tiger Swallowtail Butterfly | Children/Providing habitat for |
| (2) Rufous Hummingbird | Adults/Migratory species |
| (3) Coastal Strawberry | Adults/Native American uses |
| (4) Red-flowering Currant | Children/Wildlife food plant |
| (5) Orchard Mason Bee | Children/Importance of pollinators |
| (6) Ladybird Beetle | Adults/Insects in the garden |
| (7) Earthworm | Children/Starting with soil |
| (8) Western Crabapple | Adults/Wildlife food plant |
| (9) Sunflower | Children/Feeding the birds |
| (10) Blue Elderberry | Adults/Food for birds & people |
| (11) Squirrel | Adults/Living with wildlife |

Return journal w/ network info - names/addresses

9:15 - 10:45

Designing the Urban/Suburban Wildlife Habitat Garden

Presenter: Gretchen Vadnais, Landscape Architect

Y. Reest - getting a work day arranged - will call re mail later

10:45 - 11

BREAK

11 - 12

Inspiring Community Gardeners to Garden for Wildlife

Creative Signage

Interpretive Talks/Walks: The Presenter's Bag of Tricks

Event Planning

Presenter: Erica Calkins

12 - 1:30

LUNCH and PREPARATION TIME FOR TEAM PRESENTATIONS

1:30 - 3

Justin - recap interpretation
Team Presentations & Comments 3-5 minutes

3 - 3:15

BREAK

3:15 - 4

Wrap-Up (Beth, Leslie & Justin)

Leslie -

- Stewardship - *Leslie*
- Expectations and Assignments *Beth/Justin*
- Contacts for NWF and Parks *Justin*
- Review of Payback Hours *Beth - lost sheets*
- *Goal!* NWF Certification for Habitat Sites - Requirements *Beth*
- Evaluation of Training *Beth*
- Hand in Journals *Beth*
- Questions *10 minutes*

log sheets due.

6/15
9/15
12/15
3/15

4 - 4:30

Graduation & Celebration

officiating H.S. - new name tag

work together to find opps. # pilot program

for 7/19/04
appliance

*ask to put star on journal
y ok to use
gives permission*

new name tag

THE INTERPRETERS BAG OF TRICKS- INSPIRING COMMUNITY GARDENERS 1/2

- I. Introduction- background, bias toward heirloom plants and hisorical uses from Anglo traditions. Volunteer at End of the Oregon Trail Heritage Garden.
WARNING_ I talk really fast but e-mail included
- II. Tools to use or the Bill Nye approach to interpretation-
 1. Evaluating the "audience"
 2. Use of questions- example fennel with school kids. What does this smell like? How might you use it?
 3. Involving the senses- taste (watch out for liability here- ROSE SUGAR), smell (see above), listen (especially good for seed pods), touch (lamb's ears & BURDOCK BASKETS & WARS
 4. Use of props you bring along- WHEAT and CORN CHEWING GUM- Japanese student little cabin in the big field
 5. Make and takes or participation where possible- Ex. Sword fern game, daisy chains, dandelion curls
 6. Factoids- little snippets of odd, unusual, gross or funny- medical tid-bits often fall under this category Ex. Fennel used for flatulence. (For kids ask who knows what flatulence means?) They love this stuff!
 7. Stories- funny or sad or interesting- this is where reading the audience comes in. Do they have the time and interest to listen?
 8. Combining elements- grabbing the teachable moment. Usually visitors just show up and ask some questions. I usually select some plants, share factoids. Ex. Saponaria- show, smell and hopefully have my jar of suds handy, tell how used for washing babies, hair and unmentionables because the lye soap usually strong. If time allows share more-
 9. Ham it up- if you have fun, they will have fun and be inspired
 10. Sources of factoids- see bibliography. Search for multicultural & ethnobotany resources

Goal- to make our gardens fun and usable so people will want to participate. Make them approachable vs. the Don't Do That approach. Second goal to encourage a lower maintenance approach to allow for seed saving and habitat diversity besides it can be a lot less work

Habitat Stewards Training 2001

Friday, March 30

Multnomah Arts Center

- 6:00 - 6:10 Settle-in, Welcome on behalf of Parks and Recreation's Community Gardens Program
- 6:10 - 6:15 Participant Introductions
- 6:15 - 6:30 Overview of Training Schedule
- 6:30 - 6:50 Group Activity
- 6:50 - 7:15 Expectations for Volunteer Hours
Basic Expectations
Specific Opportunities Available
- 7:15 - 7:30 Break
- 7:30 - 7:45 Hand-out Resource Binder
Homework assignments
- 7:45 - 9:00 *Urban Wildlife* **Presenter:** Holly Michael
Oregon Department of Fish and Wildlife

Saturday, March 31

Multnomah Arts Center

- 9:00 - 9:45 *Beneficial Predators and Pollinators and the Plants that Attract Them* **Presenter:** Glen Andresen
Metro Regional Services
- 9:45 - 10:00 Break
- 10:00 - 10:30 *Mason Bees* **Presenter:** Chuck James
Home Orchard Society
- 10:30 - 10:45 Break
- 10:45 - 12:00 *Portland Area Watersheds* **Presenter:** Lynn Vanderkamp
Bureau of Environmental Services
- 12:00 - 12:05 Sign-up chart for carpooling
- 12:05 - 1:00 Lunch
- 1:00 SHARP Leave for Gudrun Webber's garden

- 1:15- 1:45 *Site visit:* Gudrun Webber (665 SW Viewmont)
History of project, reasons for creation, design considerations, maintenance requirements, wildlife value
- 1:45 – 2:05 Travel to Clinton
- 2:05 – 2:20 *Site visit:* Clinton (SE 18th and Clinton). History of project, maintenance challenges/design considerations, future needs
- 2:20 - 2:25 Travel to Environmental Middle School
- 2:25 - 2:40 *Site visit:* EMS (2421 SE Orange). Habitat and education, use of resources, specific garden themes
- 2:40 -3:00 Travel to Front and Curry/Water and Gibbs and potty break
- 3:00 - 3:10 *Site visit:* Water and Gibbs (SW Water and Gibbs). History of project, design considerations, proper soil preparation, small space habitat gardening as a model for homeowners, garden art, future needs
- 3:10 - 3:20 *Site visit:* Front and Curry (SW Front and Curry). History of project, small space habitat gardening as a model for homeowners, future needs
- 3:20 - 3:30 Travel to Fulton
- 3:30 - 4:15 *Site visit:* Fulton (SW 3rd and Barbur Blvd) **Presenter:** Amy Schroth
History of community gardens and habitat area, reasons for habitat restoration, strategies for reclaiming native habitat from invasive species, involving community members and gardeners in the restoration process
- 4:15 - 4:30 Travel back to the Multnomah Arts Center
- 4:30 See you all next Friday!

Friday, April 6 Multnomah Arts Center

- 6:00-9:00 *Native Plants of the Willamette Valley and their Ecological Characteristics* **Presenter:** Carolyn Devine
Lisa Albert
Berry Botanical Gardens

Saturday, April 7 Portland Parks and Recreation, Mt Tabor Yard

- 9:00-11:00 *Native Plant Propagation* **Presenter:** Denise Dickens

and Salvaging
Services

Parks and Recreations Horticultural

- 11:00-11:15 Break
- 11:15-12:00 *NWF Slide show* **Presenter:** Beth Stout
National Wildlife Federation
- 12:00-12:45 Lunch
- 12:45 - 1:00 Travel to Rose City School (2334 NE 57th)
- 1:00- 1:30 *Site Visit:* Rose City School. **Presenters:** Lesa Gilmore, Sheri Gorman
History of project, fundraising and resources, volunteer involvement,
habitat and education
- 1:30 – 1:40 Travel to Wilcox Elementary School (833 NE 74th)
- 1:40 - 2:10 *Site Visit:* Wilcox Woods
History of project, site design, fundraising and resources
- 2:10 - 2:20 Travel to Berrydale Community Gardens (SE 90th and Taylor)
- 2:20 - 2:35 *Site Visit:* Berrydale
History of project, garden design, future collaboration with Clark School
- 2:35 - 2:45 Travel back to Mt. Tabor Yard
- 2:45-3:00 Break
- 3:00-3:30 *Fundraising and Donations* **Presenter:** Beth Stout
National Wildlife Federation
- 3:30-4:30 *Brainstorm resources, networking opportunities, and project possibilities.*
Sign-ups for volunteer opportunities
- 4:30-5:00 Celebration!

**There will also be a two hour follow-up session/ potluck on a
weekday evening at the end of April.**

Learn about BUGS!

"Beneficial Predators and Pollinators
and the Plants that Attract Them"

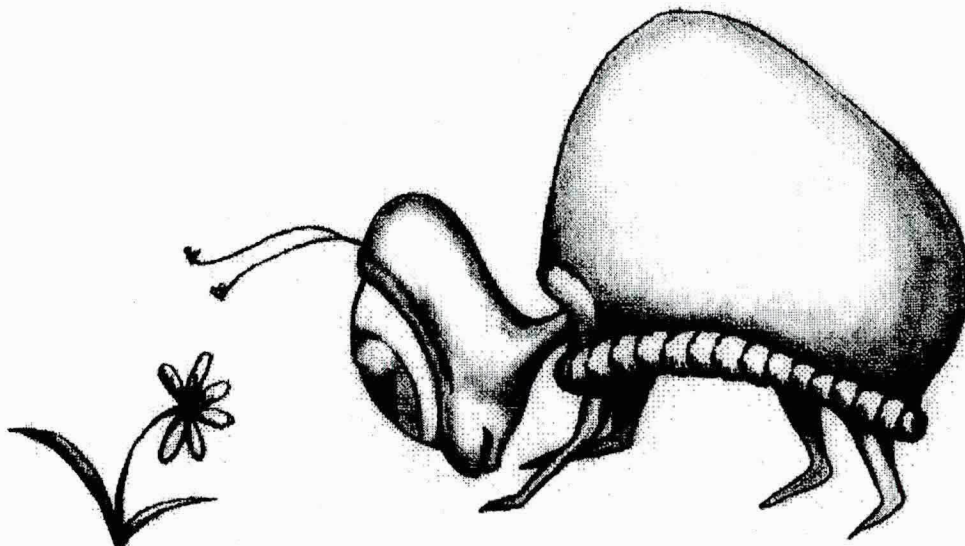
Saturday, March 31st 9-12

Multnomah Arts Center - 7688 SW Capitol Hwy
9 - 9:45 *Glen Andresen* from Metro Regional Services will
speak about a variety of insect species which benefit our gardens.

10:00 - 10:30 *Chuck James* from the Home Orchard Society
will speak about *Mason Bees*.

Gabriel Demonstration Orchard- SW 41st and Canby
10:45 - 12:00 *Blooms which attract beneficials*. Help to plant a bed
near the Gabriel Orchard and Community Gardens.

This FREE workshop is sponsored by Portland Parks and Recreation Community Gardens Program.
For more information please call 503-823-1612.





**A Partnership of the National Wildlife Federation and the Portland Parks and Recreation
Community Gardens Program**

Application

Please fill out the following application carefully. Use extra paper if necessary.

Your Name _____

Address _____

Street

City

State

Zip

Home Phone _____ Work Phone _____

Fax _____ E-Mail _____

Sex ____ M ____ F Date of Birth _____

Occupation _____

Work Status ____ Full Time ____ Part Time ____ Retired ____ Other

Pertinent Education, Training, and Experience (attach additional pages if necessary)

Please read the following before signing:

I am aware of or am interested in learning the basic philosophy of the Habitat Stewards Program.

I understand the information I have provided may be verified by contacting the person or organizations listed in this application and affirm that the information on this application is true.

I understand and am willing to commit to 50 hours of volunteer service to the Habitat Stewards Program **at least 40 of those hours at a Portland Parks & Recreation Community Gardens location** and to follow through with certification of my project(s) with the National Wildlife Federation's Backyard wildlife Habitat Program.

Signature of Applicant

Date

Please return this application form to:

**Leslie Pohl-Kosbau
Portland Parks and Recreation Community Gardens
6437 S.E. Division, Portland, OR 97206**

*The National Wildlife Federation Habitat Stewards Program is sponsored nationally by
Wild Birds Unlimited
and funded locally by an Environmental Education grant from
Metro Regional Parks & Greenspaces*

The National Wildlife Federation, 2031 S.E. Belmont, Portland OR 97214, 503-230-0421

habitatstewardsapplication



NATIONAL WILDLIFE FEDERATION®
WESTERN NATURAL RESOURCE CENTER

January 18, 2000
FOR IMMEDIATE RELEASE

Contact: Beth Stout, National Wildlife Federation
stout@nwf.org or 503-230-0421

**REGISTER NOW FOR HABITAT STEWARDS VOLUNTEER TRAINING
AND SAVE A PLACE FOR WILDLIFE IN YOUR NEIGHBORHOOD!**

The National Wildlife Federation® and Portland Parks and Recreation Community Gardens are sponsoring a free volunteer training for people who want to assist members of their community to create, maintain and learn about gardening for wildlife - and for people - at community gardens throughout Portland. The training is funded by a grant from Metro Regional Parks and Greenspaces.

- WHEN:** SATURDAY, MARCH 4 and SATURDAY MARCH 11
8:30am to 4:30 pm, and MONDAY, MARCH 6 AND WEDNESDAY,
MARCH 8, 6:30pm to 9:30pm
- WHERE:** SOUTHWEST COMMUNITY CENTER at 6820 S.W. 45th Avenue
(In Gabriel Park)
- WHAT:** Training sessions will include Northwest native plants, food and medicinal plants in the wildlife habitat garden, pollinator gardens, interpreting nature for children and adults, and the natural history of Portland.
- WHY:** Trained volunteers will help to create and maintain habitat sites at community gardens, helping their friends and neighbors to transform their landscaping to benefit wildlife, and reaching out to the community at large about gardening for wildlife.
- HOW:** Contact Beth Stout at 230-0421 or stout@nwf.org to get more information or an application.

The nation's largest member-supported conservation group, the National Wildlife Federation unites people from all walks of life to protect nature, wildlife and the world we all share. NWF has educated and inspired families to uphold America's conservation tradition since 1936. Its common-sense approach to environmental protection brings individuals, organizations and governments together to ensure a brighter future for people and wildlife.

-30-



NATIONAL WILDLIFE FEDERATION®
WESTERN NATURAL RESOURCE CENTER

December 13, 1999
For Immediate Release

Contact: Beth Stout, National Wildlife Federation
stout@nwf.org or 503-230-0421

Habitat Stewards Volunteers Will Make A Difference for Wildlife!

The National Wildlife Federation® and Portland Parks & Recreation Community Gardens will sponsor a Habitat Stewards™ volunteer training program in March 2000. Habitat Stewards will assist members of their community to create, maintain and learn about gardening for wildlife - and for people - at community gardens throughout Portland. Habitat Stewards is funded locally by an Environmental Education grant from Metro Regional Parks and Greenspaces and sponsored nationally by Wild Birds Unlimited®.

Community gardens provide gardening and greening opportunities for the physical and social benefit of the people and neighborhoods of Portland. Habitat Stewards - a mentoring program of NWF's Backyard wildlife Habitat™ program - promotes the creation, restoration, and preservation of wildlife habitat at home, at school, and where we recreate, worship, and work.

The Habitat Stewards training will be held at the Southwest Community Center at 6820 S.W. 45th Avenue from 8:30 am to 4:30 pm on Saturday March 4 and March 11 and from 6:30 to 9:30 pm on Monday March 6 and Wednesday March 8. The training sessions are free. Trained volunteers will be expected to spend 50 hours helping to create and maintain habitat sites at community gardens, helping their friends and neighbors to transform their landscaping to benefit wildlife, and reaching out to the community at large about gardening for wildlife.

Training sessions will include Northwest native plants; food and medicinal plants in the wildlife habitat garden, pollinator gardens, interpreting nature for children and adults, and the natural history of Portland. Volunteers will learn how to plan, plant and maintain wildlife habitat in community gardens, backyards and other sites.

For more information or to request a program application, contact Beth Stout, Educational Outreach Coordinator, National Wildlife Federation, 2031 S.E. Belmont, Portland, OR 97214; 503-230-0421; stout@nwf.org. Registration is limited.

The nation's largest member-supported conservation group, the National Wildlife Federation unites people from all walks of life to protect nature, wildlife and the world we all share. NWF has educated and inspired families to uphold America's conservation tradition since 1936. Its common-sense approach to environmental protection brings individuals, organizations and governments together to ensure a brighter future for people and wildlife.



Volunteering to Conserve Wildlife Habitat in Your Community!

To help communities create and preserve wildlife habitat, the National Wildlife Federation® and the City of Portland Parks and Recreation Community Gardens Program are training a team of community members to become **Habitat Stewards** volunteers. These volunteers will assist members of their community to create, maintain and learn about gardening for wildlife - and for people - at community gardens throughout Portland. Community gardens provide gardening and greening opportunities for the physical and social benefit of the people and neighborhoods of Portland.

Habitat Stewards will receive 24 hours of training, including:

- Northwest Native Plants;
- Food and Medicinal Plants in the Wildlife Habitat Garden;
- Pollinator Gardens;
- Interpreting Nature for Children and Adults; and
- The Natural History of Portland.

Habitat Stewards will “pay back” 50 hours of volunteer time helping to create and maintain habitat sites at community gardens; helping their friends and neighbors to transform their landscaping to benefit wildlife; and reaching out to the community at large about gardening for wildlife.

Training is **FREE** and volunteers will receive a **Habitat Stewards** “tool kit” to help them learn, and teach others, about the importance of saving a place for wildlife in our own backyards and communities. *The next training will be on Saturday, March 4 and 11 from 8:30am to 4:30 pm and on Monday and Wednesday, March 6 and 8 from 6:30 to 9:30pm.*

For information about volunteering to be a **Habitat Steward** please contact Beth Stout, Educational Outreach Coordinator, National Wildlife Federation, 2031 S.E. Belmont, Portland, OR 97214; 503-230-0421 or stout@nwf.org.

*Habitat Stewards is funded by an Environmental Education grant from
Metro Regional Parks & Greenspaces
and sponsored nationally by
Wild Birds Unlimited*





June 5, 2000

Dear Habitat Steward

This is just a quick letter to inform you about the next opportunity we've planned to help get people out there and working to increase wildlife habitat in our community gardens.

What: A Habitat Tour including three of our community garden sites – Berrydale, Clinton, and Fulton. We'll jump into a van (or carpool) and visit each of the sites, talking about the history of the garden, our vision for habitat improvement, and our purpose behind what we're doing. We'll also discuss methods for weed control, native plant identification, and ways in which you can help out. Habitat Stewards will receive three hours credit towards their volunteer hours. We'll provide snacks and beverages.

When: Saturday June 17 – from 9:00am to 11:30 am. Please arrive by 8:45am so we can get a good start for the day. We will leave at 9:00 sharp.
Rain or shine!

Where: We will be meeting at the community gardens office and leaving from there. The office is located at 6437 SE Division. Call us if you need directions or have any questions.

Please RSVP by June 14th - call Leslie at #823-1612

Sincerely,
Justin Boe
Habitat Stewards Assistant

PS: Hey there's another great opportunity! On Sunday July 16th Metro will be hosting the Gardens of Natural Delights tour from noon to 6:00pm. This is a chance for folks to visit sixteen different organic gardens, eight of which include habitat certified by the National Wildlife Federation. If you would like to be a volunteer stationed at one of these gardens during the tour please call Beth Stout at 693-8596. This is a great way to see some gardens you wouldn't normally have access to.



PORTLAND PARKS & RECREATION

January 20, 2000

Dear Garden Manager,

It is an exciting new year. Not only is it a new century, but it is the year to mark the **25th Anniversary of the Portland Community Gardening Program**, sponsored by Portland Parks and Recreation. I want to thank you for accepting the vote of confidence from your gardeners to help with the on-site garden management and the advocacy of community gardening in Portland.

There are new and returning garden manager volunteers. To get to know each other, and to get prepared for the spring organization, our first meeting of the year is scheduled for Wednesday, March 1st at the Mt. Tabor Yard, 6437 S.E. Division St. at 7:00pm. So mark your calendars. If you cannot attend the meeting, be sure ask your site assistant or another representative to attend. There will be refreshments available.

Enclosed is a flyer of the **Habitat Stewards training**, which is an educational program sponsored by National Wildlife Federation, Portland Community Gardens and Metro. Please contact Beth Stout for an application if you are interested. Payback will be primarily through our Community Garden habitats, and will be for gardeners and the interested public. If you are not able to take advantage of this training and service opportunity, please pass the information along to others.

Our **Produce for People Program** will once again be in full swing this year. Last year community gardeners donated over 4,000 pounds of fresh produce to local food emergency pantries. There may be a spot that you or site gardeners have designated for growing produce, and you may be thinking about who will be the contact person for your site. This will be part of our discussion on March 1st. Coordination will again be through our Community Gardens Program.

An immediate opportunity for you is a **Fruit Tree pruning class** on February 12, at the Multnomah Art Center 7688 SW Capitol Hwy and also at the Gabriel Orchard nearby. Community Gardens and Urban Forestry is training people to help teach others how to prune at the orchard on February 26th. Both sessions are free, and there is a great opportunity to get practice and get our orchard pruned!

Sincerely,
Leslie Pohl-Kosbau

(

(

(

ACCOMPLISHMENTS...

**Habitat Stewards Program with Portland Parks and Recreation
Community Gardens and the National Wildlife Federation
Portland, Oregon**

Program Report 2000, 2001

HABITAT STEWARD PAYBACK HOURS

First Quarter (April 1- June 30)

of stewards who sent in time sheets: 11

Helena Jaya: 4
Cheryl Brischetto: 0
Janet Black: 12
Ole Ersson: 26
Amy Schroth: 22.25
Lindsey Scanlon: 8
Heidi Buchanan: 0
Karen Seamans: 8.5
Cathy Sampselle: 21
Kathleen Goodfriend: 7
Jamey Giangarlo: 0

Total Steward hours QUARTER ONE: 108.75

****Some of these hours involve work on non-community garden projects according to the volunteer log sheets**

Second Quarter (July 1-Sept 30)

of stewards who sent in time sheets: 5

Helena Jaya: 5
Jamey Giangarlo: 3
Cheryl Brischetto: 12.5
Kathleen Goodfriend: 3
Lindsay Scanlon: 7

Total Steward (Reported) hours QUARTER TWO: 30.5

**Volunteer Hours for September, October, November, December
(According to Community Garden Records):**

Total # of volunteers (New and returning): 35

New Volunteers: 23

Habitat Stewards: 9

Steward Hours at Community Garden events:

Helena Jaya: 5	Sybil Kelley: 3.5
Cheryl Brischetto: 2	Amy Schroth: 8
Janet Black: 6	Ole Ersson: 5
Lindsey Scanlon: 1	Gerald Decker: 5
Rachel Sanchez: 5.5	

Total Steward hours SINCE SEPTEMBER 1st: 41
 Total Hours from Other Volunteers: 112

Steward hours for January 1 through March 31st

Helena Jaya:	Sybil Kelley:
Cheryl Brischetto:	Amy Schroth: 11.5??
Janet Black:	Ole Ersson:
Lindsey Scanlon:	Gerald Decker:
Rachel Sanchez: 6	Karen Seamans: 4

Estimate of non-steward hours:

August- May 15th, 2001

Total Hours from Other Volunteers: 177 hours

Habitat Stewards Event List

September 1, 2000 - May 31, 2001

September 23, 9-11 *Clinton Work party* (6 vol)
 October 7, 9-3:30 "*Home is Where the Habitat is*" workshop (3 vol)
 October 28, 9-12 *John's Work Party* (2 vol)
 November 4, 10-12 *Fulton Planning with Amy and Gerald* (2 vol)
 November 15, 9-11 *Berrydale Site Survey* (2 vol)
 November 16, 2-5 *Johns Garden with Rosemary Anderson HS/POIC students*
 (4 students)
 November 18, 9-11:30 *Front and Curry Work Party* (11? Vol)
 December 2, 9-12 *Fulton Work Party* (9 vol)
 December 4, 8-4 *EnviroCorp at Fulton* (7 vol)
 December 5, 6:30-9 *Steward Gathering* (4 vol)
 December 7, 3-4:30 *Clinton Site Survey* (1 vol)
 December 8, 1-3 *Patton Home Work Party* (7 vol)
 December 12, 9-11 *Fulton Site Survey* (1 vol)
 January 21, 1-3 *Clinton Clean-up* (1 steward, 1 vol)
 February 4, 1 -2:30, *John's w/ Christie School* (8 vol)
 February 5, 9-11, *Water and Gibbs with CPU* (11 vol)
 February 11, 1 -2:30, *John's w/ Christie School* (8 vol)
 March 10, 9-12 *Habitat Awakening at Fulton* (3 stewards, 10 vol)
 March 30, 6-9 *Habitat Stewards Training* (21 participants)
 March 31, 9-5 *Habitat Stewards Training*
 April 6, 6-9 *Habitat Stewards Training*
 April 7, 9-5 *Habitat Stewards Training*
 April 20, 9-2 *Dishman Center Earth Day* (2 stewards 2001)
 April 21, 10-1 *Fulton Seed and Plant Exchange* (1 steward 2001)

April 24, 6-8 *Clinton Clean-up* (1 steward (2001) 2 vol)
 April 28, 10-3 *Procession of the Species* (2 stewards 2001)
 May 5, 9-12 *Clinton work party* (2 stewards 2001, 1 steward 2000, 1 vol)
 May 19, 9-12 *Berrydale work party*—we'll see...

Existing Gardens with Habitat sites: Berrydale, Clinton, Water and
 Gibbs, Fulton, Johns, Adams

New Habitat sites since Sept 2000: Front and Curry, Patton Home

Suggestions made by participants for future steward trainings:

- Clarify how each class ties into the entire training—make sure there is a thread that runs through the entire program
- More hands on activities such as the walk to the site. Visit sites and have a problem solving activity related to that specific site.
- Set aside a block of time during the training to allow participants to network and make connections with each other about interests, geographic locations, resources, etc
- Arrange the classroom in a circle not in rows
- Have a session outside of the city if possible (Like the wildlife stewards have in their training)
- Plan for a session focusing in on resources available within the group: skills, connections, personal resources (yard clippings, extra art supplies, etc)
- Have a fun get together at the end of the program
- Engage people by asking them to help problem solve in the training and over the course of the payback period
- More clarity on work opportunities. Identify a list of projects available. Don't limit opportunities to three specific community garden sites. Provide work opportunities in a variety of geographical areas in Portland.
- Provide less manual labor payback hours and more knowledge oriented activities where the expertise provided in the training can be used.
- Organize work parties that start out with a teaching element and then move into the manual aspect of the project. Stewards can organize and teach these.
- More work opportunities focusing on wildlife for future work parties.

Steward Profiles:

Amy Schroth and Gerald Decker are two stewards from the 2000 Habitat Steward training. They have been meeting regularly to organize restoration plans for the Fulton Community Gardens habitat area. This area, once used by homeless people and as a dumping ground by the gardeners is being restored to a more diverse ecosystem. Taking one section at a time, Amy and Gerald have removed extensive coverings of blackberry, morning glory, clematis and ivy. Forty Cedar and Douglas Fir saplings have been transplanted and a path meanders through the area being restored. A ground level water source and 3 logs serve as a focal point for the area.

Steven Ninemire and Terrie Ezzat haven't wasted any time since the completion of the 2001 Habitat Stewards Training. Steven and Terrie have organized two work parties in the last month in an attempt to control the dominating marsh marigold, morning glory and clematis. They have weeded around all of the existing native plants and have placed thick layers of cardboard and mulch to improve the soil and control the weeds. Both visit the garden at least once a week and are creating a work plan for the site.

Potential Habitat Gardens:

Sewallcrest Community Garden (SE 31st and Market)

Deirdre Murray, a steward from the 2001 training, is working on a design for a habitat area at Sewallcrest Community Gardens (SE 31st and Market). She hopes to involve the adjacent Edwards School, neighborhood groups and community gardeners.

John's Community Garden (N. Edison and Johns)

The creation of a habitat area at St Johns is currently underway. Chris Corneille, an AmeriCorp member is working with Urban League students. They have been working with a landscape architect and are in the process of weeding the area and contouring the landscape to allow for a path and variation in the terrain. Donations of concrete scraps will be used to lay a walkway and rocks and logs will be placed around the area as well.

Brentwood-Darlington Community Gardens (SE 57th and Cooper)--

Bill Cepurna, the garden manager at Brentwood, is looking for someone to help in designing and implementing a habitat and fruiting shrubs community area. Three community garden plots in the corner of the garden (a total of 1200 sq. ft) will be transformed into a community area. He envisions an edible landscape and wildlife habitat with benches and areas for gardeners to relax. There will also be a gazebo nearby. The site is next door to Metro's habitat display garden as well. He is looking for volunteers to help in the design process and then in the creation of the site.

Habitat Awakening

Saturday, March 10, 2001

9 am - 12 noon

Fulton Community Gardens
SW 3rd and Barbur Blvd.



Learn About...

Early Spring Ecology
Native Plant Identification
Urban Habitat Gardening

Help Hands on Portland...

With maintenance projects such as
weeding and mulching

Contribute to...

The design of garden art features
such as stepping stones and bird houses

Explore the habitat

Enjoy...

Ecology-based children's activities
Free coffee and pastries



Please call Portland Parks and Recreation Community Gardens Program at 503-823-1612

Tuesday, December 5
6:30-8:30 pm

Lucky Labrador Brew Pub
915 SE Hawthorne Blvd.
(between 9th and 10th)

RSVP to Kirsten at 503-823-1612 by Dec 1

Stewards Gathering!!!

Come with any ideas,
photos of past or
current projects
and any suggestions
for the upcoming
Steward's training

Get payback hours
and some good old
fashioned gardening
inspiration



Community Gardens
6437 SE Division St.
Portland, OR 97206
Phone (503) 823-1612
Fax (503) 823-2246



*Ensuring access to
leisure opportunities
and enhancing
Portland's natural beauty*

PORTLAND PARKS & RECREATION

Hello Stewards...

The following is a list of volunteer opportunities coming up. This list was sent by email to those folk who have internet access. If you have an email address that I'm not aware of please send me a note at comgardens@ci.portland.or.us.

Thanks,
Kirsten

Portland's Fix-It Fairs

November 18, 8:30-2:00

December 2, 8:30-2:00

January 20, 8:30-2:00

We'll need people to staff our habitat and community garden exhibit.
We'll probably have three two hour shifts per day-

8:00-10:00

10:00-12:00

12:00-2:30 (half hour for clean-up)

Front and Curry Gardens

November 18 from 9-11

Work party to remove invasives and plant native species.

Free coffee, pastries and bagels.

Fulton Gardens

December 2 from 9-11

Amy Schroth, Gerald Decker and Janet Black have organized a work party to transplant trees, weed and plant.

Come and learn techniques for transplanting small trees and identifying native plants.

Free coffee and bagels.

A varied but not extensive sampling of volunteer opportunities available through the Habitat Stewards program...

Adopt one community garden site to focus your Habitat-creating energies

Be part of a children's habitat education program

Be part of a plant propagation team

Become a native plant garden guru. Help ID and obtain Willamette Valley plants

Work with students to bring art into the gardens

Help to raise funds for interpretive signage and brochures

Coordinate work parties and volunteer events

Community Garden Habitat Sites

1. **Berrydale** SE 90th and Taylor*
2. **Clinton** SE 18th and Clinton* +
3. **Patton Home** NE Blandina and Michigan
4. **JOHNS** N Edison and Johns
5. **Adams** 4300 NW Cornell Rd.
6. **Water and Gibbs** SW Water and Gibbs
7. **Front and Curry** SW Front and Curry
8. **Fulton** SW 3rd and Barbur Blvd.*

Potential habitat sites...

Woodlawn 7200 NE 11th

Portsmouth N Haven & Hunt
at Portsmouth MS

Sewellcrest SE 31st and Market

* Certified National Wildlife Federation Habitat Site
+ Call for access information

Become part of a Portland Habitat Mapping Initiative

Work towards certifying Community Garden sites with the National Wildlife Federation®'s Backyard Wildlife Habitat™ program

Fundraise and grant write for the Community Garden's Habitat Program

Write articles for the Community Gardens Newsletter

Create sculptured water sources and other garden art

Organize community workshops



We are looking for dedicated, creative volunteers who are willing to enhance and expand the Community Garden's Habitat Program and actively promote the benefits of gardening for wildlife and watersheds.

Clinton Gardens Habitat Area Work Party!!



Saturday, September 23
9-11 am

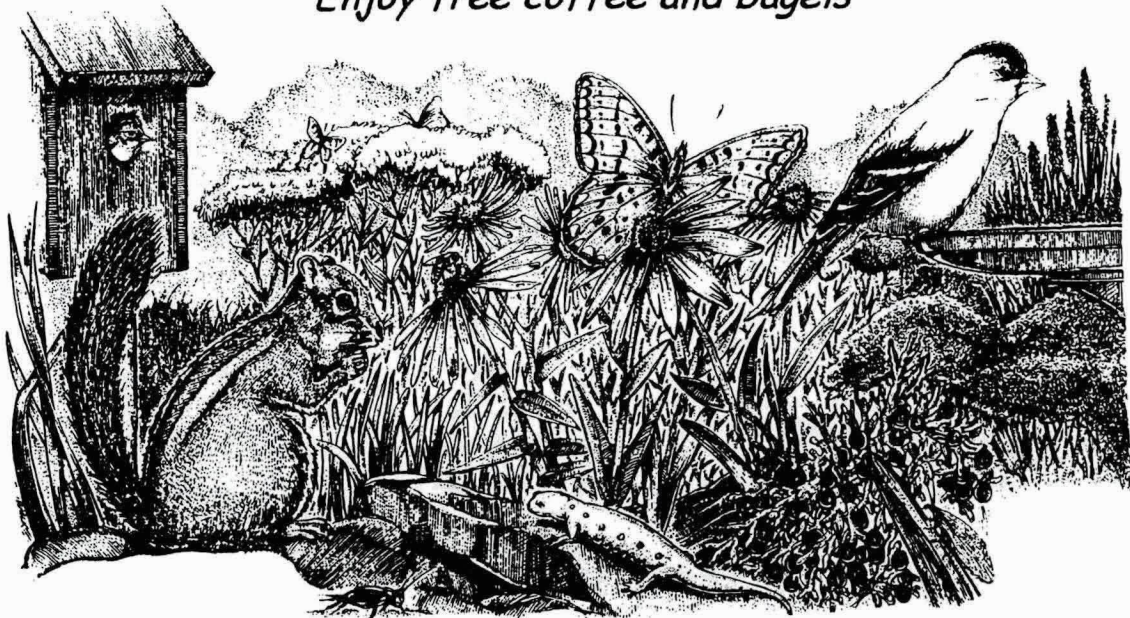
Help plant native species in the Clinton habitat garden

Remove invasive species

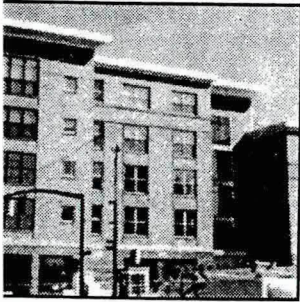
Learn to identify native plants to genus, species, and family

Help to attract birds and other wildlife to the garden

Enjoy free coffee and bagels



Community News



Ritzdorf Court, located southeast 12th and Belmont, celebrated their grand opening September 28th. This building is REACH's recent project. It has 90 units for formerly homeless people and ground floor commercial space. Ritzdorf was financed with the Portland Development Commission and the State Housing and Community Services Department. "The Ritz," as it is affectionately

called in the REACH office will be open for applications. Kevin Kraus, REACH's Construction Manager, has been busy working with Walsh Construction and William Wilson Architects, leading up to the opening. "This part of construction is always exciting—seeing years of planning become an actual home for people. There are a million details involved to make sure it comes together right."

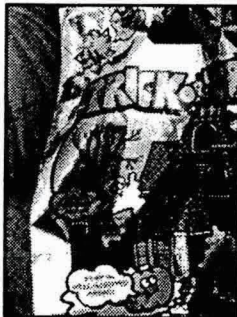
Property Manager, Becky Crew has been busy developing the waiting list of people who want to move into the apartments. Residents must earn less than 40% of the area median income—\$15,000 annually for an individual—to qualify. Priority will be given to currently or formerly homeless people. Call 503/231-0682 for information.

Halloween safety

Division Hardware & Paint, 3734 SE Belmont, will be giving out these special Trick-or-Treat bags to keep your child safe out on Halloween. Come by the store to pick one up while supply lasts.

from SE Crime Prevention

Makeup instead of a mask
 Sure costumes are flame retardant
 Costumes short to avoid falls
 Treat early, and carry a flashlight



NATIONAL WILDLIFE FEDERATION will present a gardening for wildlife program on Saturday, October 7, 2000 from 9:30 am – 3:30 pm in Hecker hall at St. Philip Neri Parish, 18th and Division, in Southeast Portland. The event, cosponsored by Portland Parks & Recreation Community Gardens Program and National Wildlife Federation's Habitat Stewards™ volunteer Program will feature presentations about gardening for butterflies and hummingbirds, using native plants in the garden and more. Participants will also visit the Clinton Community Garden certified Backyard Wildlife Habitat™ site to see how Habitat Stewards volunteers have been working to provide a place for birds and beneficial insects alongside food gardens for people. This program encourages people to save a place for wildlife in their own backyards.

UNDERSTAND MEN BEYOND THE MYTHS AND STEREOTYPES, a workshop for men and women led by Judy Brodkey. Saturday, October 28, 9 am – 5:30 pm at the Friends Meeting House, 4312 SE Stark. This workshop will address myths and stereotypes about men, how narrow definitions of masculinity affect all of us, and how we can take action to be allies for men and boys. Sliding fee scale. To register or for further information, call 234-1012.

SEVENTH-GRADE IMMUNIZATIONS NEW LAW—due to state law and regulations, seventh-graders are now required to be immunized against Hepatitis B (series of three shots), measles (second dose) and chicken pox (if they haven't had the disease). The Lents Immunization Clinic offers vaccines the first Saturday of each month while the KIDS Immunization Clinic operates the second Saturday of the month. The clinic will operate from 10 am – 2 pm at the Pilgrim Lutheran Church, located at 4244 SE 91st Avenue.

"MUSIC, MUSIC, MUSIC"—A Standard Flower Show presented by Villa Garden Club, Friday, October 6, 2000 from 1 – 5 pm at the Montavilla United Methodist Church 232 SE 80th Avenue. It is open to the public for free. Special exhibits include: Dorothy Drew, Have Fun with Dried Flowers; Phyllis Danielson, Master Ikebana Instructor, Demonstration and Exhibit and Harold Oliver Primary School, Global Garden Display.

FOSTER GRANDPARENTS PROGRAM is looking for senior adults, at least 60 years of age to help at-risk children. These children need positive role models to assist them with reading, developing social skills, and more. Foster Grandparents receive \$200 a month tax-free plus other incentives including meal and travel compensation, paid time-off, and sick leave. No experience needed, just a desire to help children. Call 503/232-0007 ex. 202 for details.

MT. TABOR PRESBYTERIAN CHURCH presents an evening of family fun at the Fourth Annual Harvest Festival and Silent Auction. The festival will be held on October 21 from 4 – 7 pm. The silent auction goes from 4 – 6:30 pm. You will find games, prizes, food, fun and a lot more at the festival. All food and games cost between one and five scrip. Scrip is only a dime a piece. Call 234-6493 for more information.

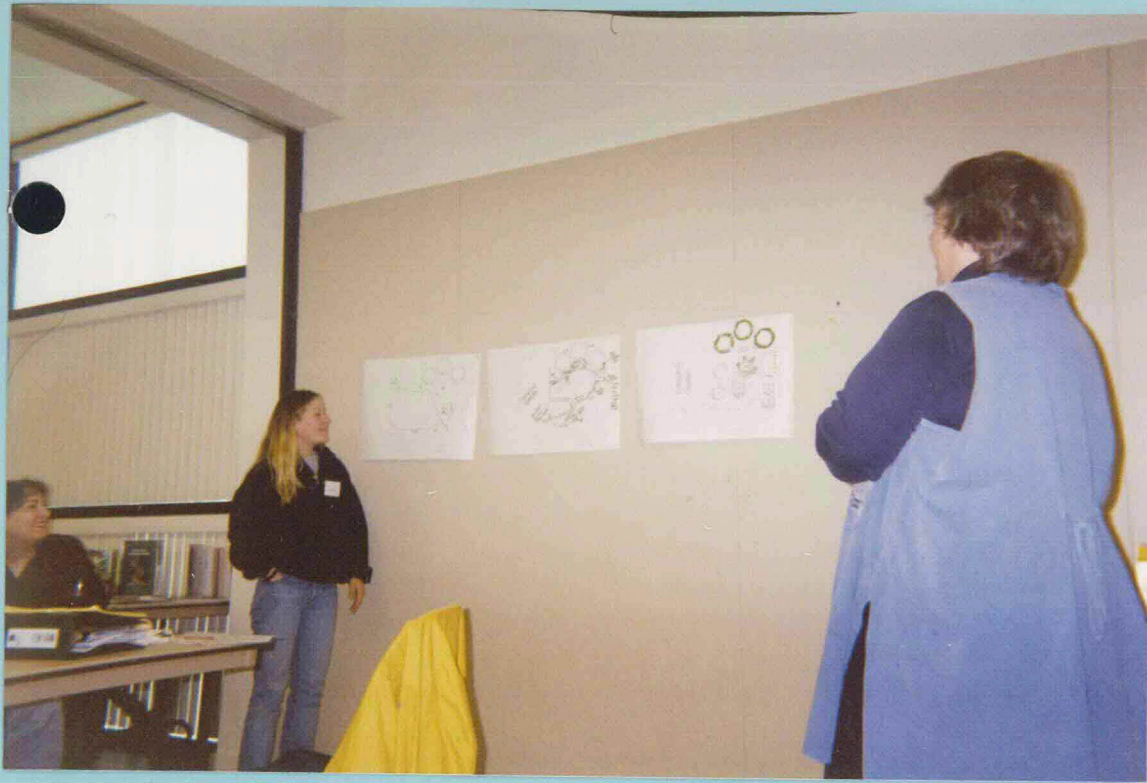
OREGON CHAPTER OF MULTIPLE SCLEROSIS SOCIETY announces its annual meeting on Thursday, October 5, from 6 – 8 pm at the Lloyd Center DoubleTree Hotel (1000 NE Multnomah) in Portland. Multiple sclerosis is a chronic, often disabling disease that randomly attacks the central nervous system.

)

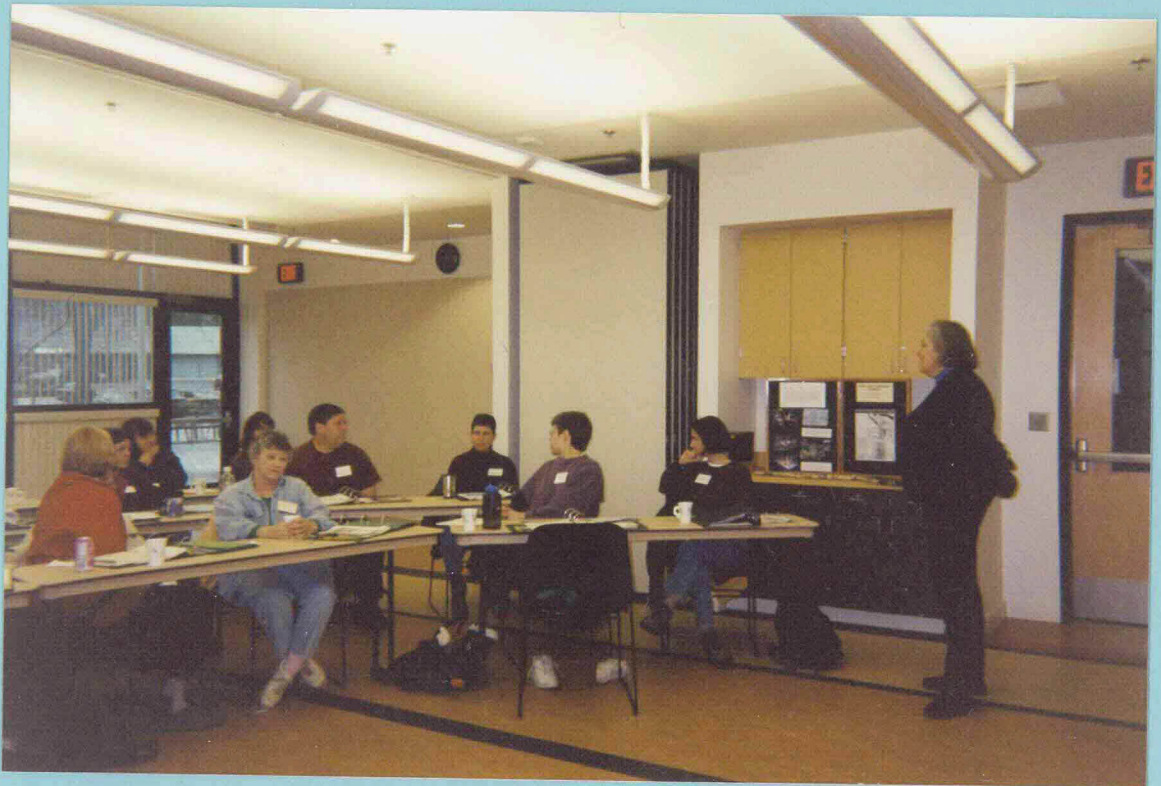
O

U

PHOTOS



Gretchen Vadnais
Landscape
Architect
"Designing the
Urban/Suburban
Wildlife Habitat
Garden"



Host Leslie Pohl-Kosbau and
Habitat Stewards Class



Presenter:
Judy Bluehorse Skelton

"Incorporating Food and
Medicinal Plants
into the
Wildlife HABITAT Garden"





Presenter: Rick Brown
"Introduction to HABITAT"



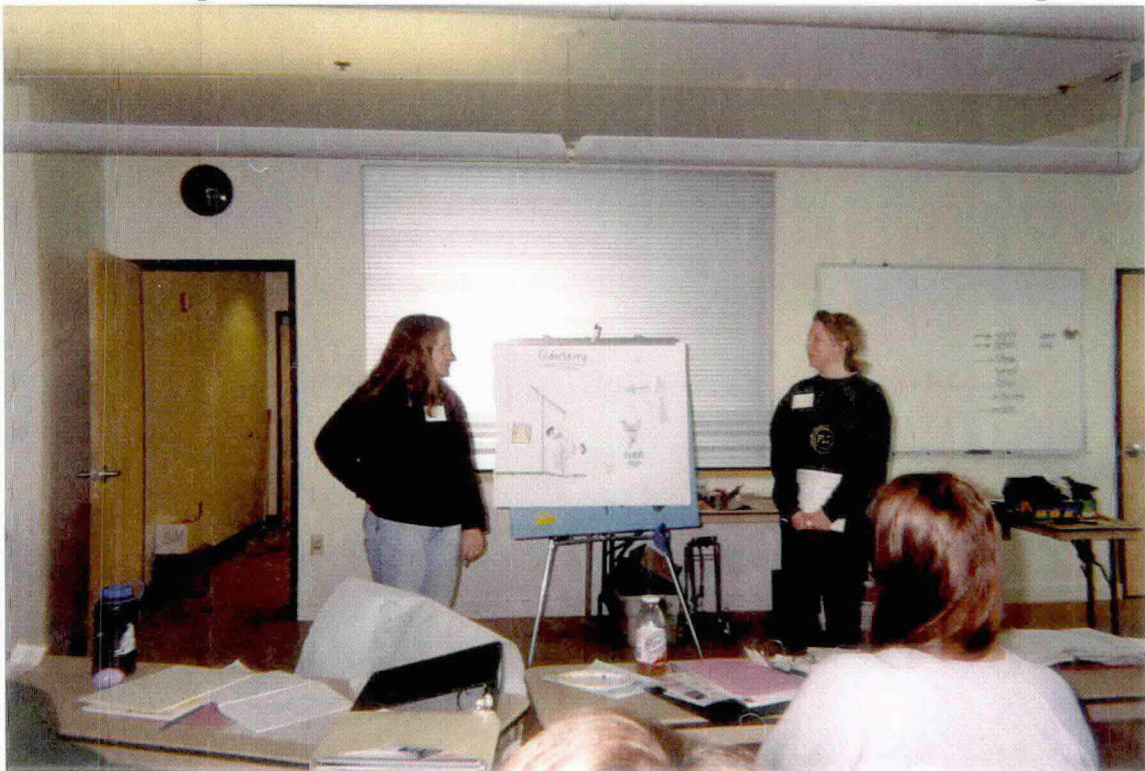


JUSTIN BOE: HABITAT Stewards Assistant

Photos from our annual Habitat Stewards Training...



...Learning about the wildlife value of dead trees ("snags")



...Practicing interpretive skills



...Discussing some of the topics covered in the training (habitat garden design, native plants, urban wildlife, watershed health, etc.)

Community volunteers helping to remove invasive plant species at the Fulton Community Garden Habitat Site in SW Portland



Community Volunteers and Habitat Stewards...



...Transplanting cedar trees

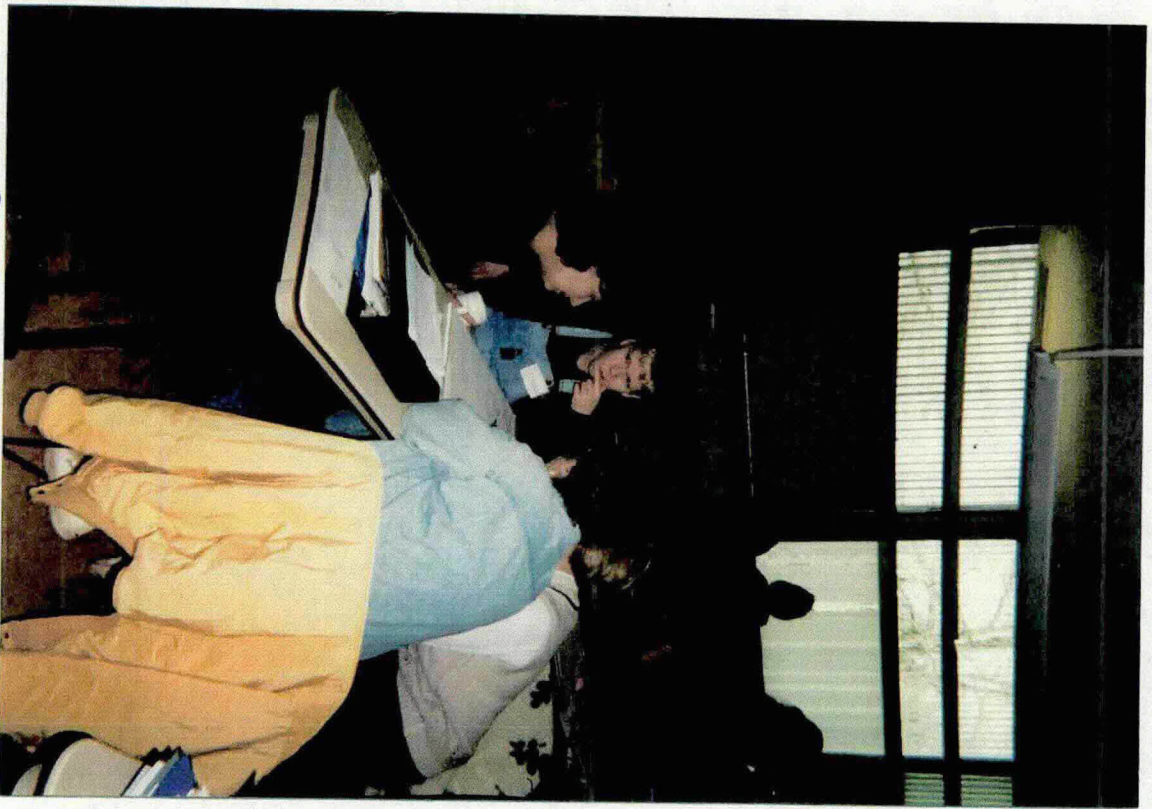


...Removing Himalayan Blackberry



...Cleaning up debris

Spring 2000 Training
Teambuilding



Spring 2000 Training

Spring 2000 Training
Exploring Habitats



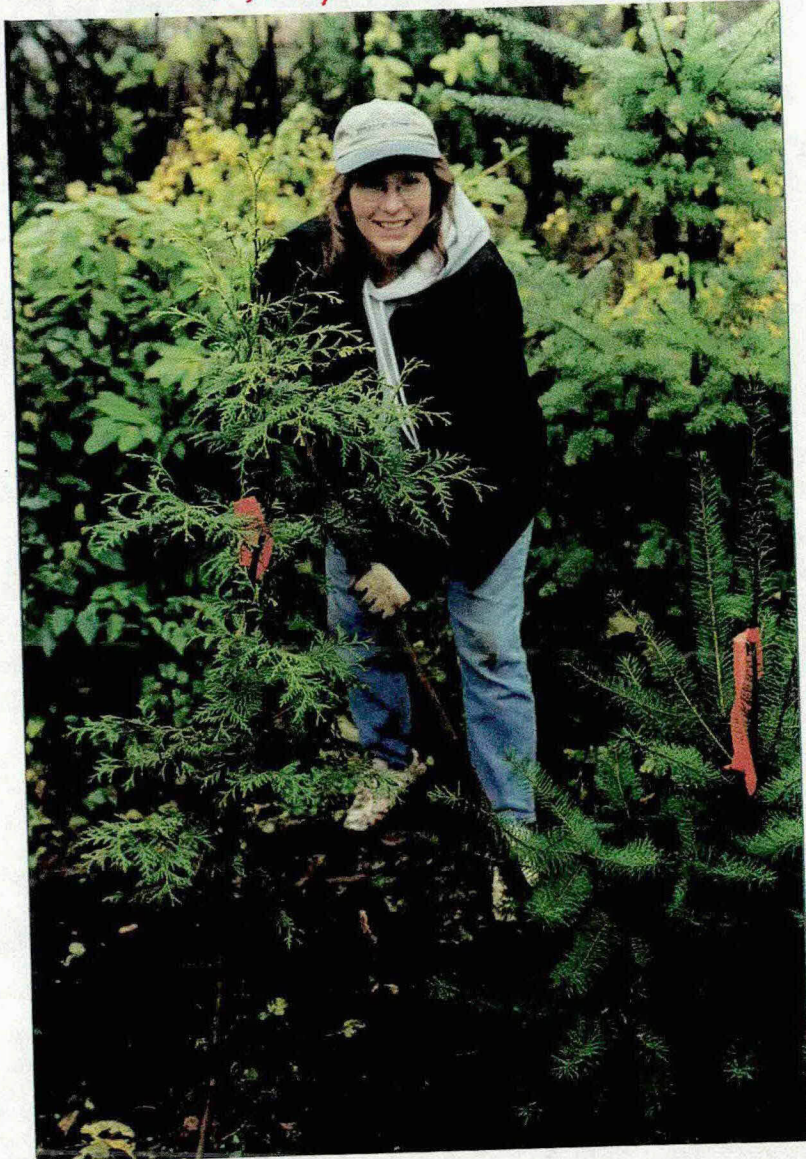
SPRING 2000 TRAINING
Getting to know each other

Learning About Medicinal
Plants - Spring 2000



Habitat Stewards
'Class of 2000'

Amy Schroth

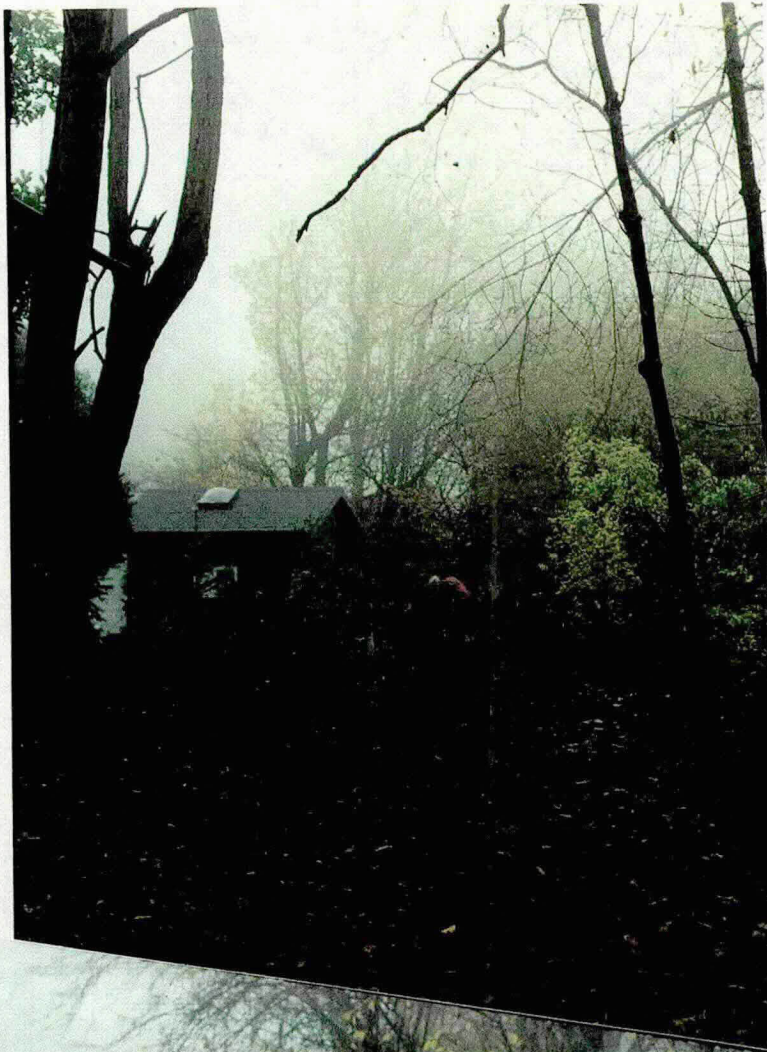


Janet Bloch



Kirsten Gallella

HABITAT STEWARDS at FULTON Community Garden
work party



FULTON HABITAT SITE



Gerald Decker

Helena Jeyar

Amy Schrotz

Fulton Habitat Site
Work Party





Fulton Habitat Site
work party





Transplanting Cedars at Fulton Site



Fulton Work Party



Fulton Work Party

***The National
Wildlife Federation
through its
Backyard Wildlife
Habitat Program
awards this
Certificate
of Achievement
to***



**BACKYARD WILDLIFE
HABITAT™**

NATIONAL WILDLIFE FEDERATION®

Fulton Habitat

*This Certificate recognizes the establishment
and maintenance of Backyard Wildlife Habitat
No. 28319*

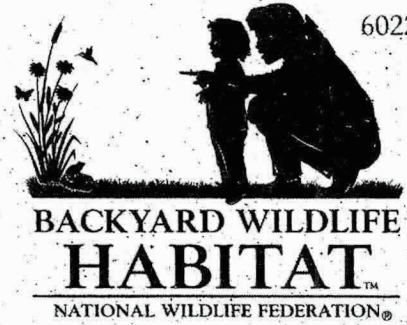
*This habitat is certified in the National Wildlife Federation's worldwide
network of mini-refuges where, because of the owner's conscientious
planning, landscaping, and gardening, wildlife may find quality
habitat—food, water, cover, and places to raise their young.*

Mel Van Sutter
President

Application for Certification

602286

Take heart, you needn't be a zoologist or botanist to fill out this application. The National Wildlife Federation looks forward to acknowledging your efforts in providing habitat for wildlife where you live or work. Do your best to fill out this application, and if there are problems, we'll get back to you with some suggestions. Within 6-8 weeks of receiving your application, we'll forward to you a beautiful personalized certificate suitable for framing and you have the option of purchasing a yard sign to educate others about your project.



A.

Applicant Name LESLIE POHL-KOSBAU 6437 S.E. DIVISION
PORTLAND, OR 97206
 Organization Name (if applicable) PORTLAND COMMUNITY GARDENS
 Name(s) to Appear on Certificate FULTON HABITAT
 Address of Habitat S.W. 3RD AND BARBUR BLVD. (IN PARKS)
 City PORTLAND County MULTNOMAH
 State/Province OREGON Country USA Zip/Postal Code _____
 Telephone (503) 823-1612 E-mail Address pkleslie@ci.portland.or.us
 Property Size (Sq. Ft. or Acres) 25,000 sq. ft. 5/8th of an acre

Office Use:

Habitat # _____

Fee Rcvd. _____

Certified _____

C.S. _____

Key Words _____

B.

If you are applying for someone else, or for an organization, in addition to the above, please fill out the following:

Contact Name _____
 Address _____
 City _____ State/Province _____
 Country _____ Zip/Postal Code _____
 Telephone _____ E-mail Address _____
 To which address should correspondence be sent? ☐ A ☐ B
 Have you ever applied for certification before? ☐ Yes ☐ No If yes, list Habitat # _____

1. FOOD/Plantings and Feeders

A. Do your best to list those plants on your property that might provide wildlife foods such as acorns, berries, nuts, seeds, buds, or nectar.

Large Trees	No.	Small Trees	No.	Shrubs	No.	Annuals & Perennials	No.
ROBINIA	2	CORYLUS	15	GAULTHERIA	3	FRAGARIA	3
PRUNUS (wild)	24			SHALON	3	POLYSTICHUM	30
PRUNUS lusitanica	5			RUBUS parviflorus	7	VANCOUVERIA H.	2
CALOCEDRUS	18			MAHONIA AQUIF.	1	ASARUM C.	3
DECURRENS				ROSA			

B. List the type and number of feeders and foods that you provide for wildlife.

Feeder Type	No.	Foods	Visited By

2. WATER/Drinking, Bathing

- A. We provide water: ☐ Throughout the year ☒ Seasonally
- B. We provide water in: ☒ Bird Bath ☐ Water dripping into a bird bath
☐ Spring ☐ Pond
☐ Water Garden ☒ Other (describe): VERNAL POOL
☐ Stream

3. COVER/Places to Hide

We provide wind-breaks and places for wildlife to hide from predators in the following manner:

- ☒ Dense Shrubs (which types?) PORTUGUESE LAUREL, ENGLISH LAUREL, BLACKBERRY,
☒ Evergreen Shrubs (which types?) "
☒ Brush Piles ☒ Log Piles ☐ Rock Piles/Walls ☒ Ground Covers ☐ Meadow, Scrub, or Prairie Patch
☒ Other (describe): DOUGLAS FIR, WESTERN RED CEDAR, INCENSE CEDAR

4. PLACES TO RAISE YOUNG

We provide the following for nesting birds, denning mammals, egg-laying reptiles and amphibians, fish, butterflies, and other insects and invertebrates.

- ☒ Mature Trees (which types?) HAZELNUT, LOCUST, DOUGLAS FIR (APPLE, PEAR ADJACENT)
☒ Small Trees (which types?) "
☒ Shrub Masses (which types?) BLACKBERRY, PORTUGUESE + ENGLISH LAUREL
☒ Trees with Nest/Den Cavities ☐ Dens in Ground/Rock ☒ Water Garden/Pond ☒ Nesting Boxes
☒ Nesting Shelves ☐ Meadow, Prairie, or Scrub Patch: Size _____ sq. ft.

Which animals use them (birds, squirrels, bats, frogs, dragonflies, etc.)? BIRDS, SQUIRRELS

Plants for butterfly caterpillars (which types?) ADJACENT COMMUNITY GARDEN YARROW, OREGANO
LEMON BALM, HYSSOP, ETC

5. RESOURCE CONSERVATION

We are conserving water and other natural resources in our backyard and community by:

- ☒ Establishing a backyard wetland or drainage buffer areas to filter storm water and limit runoff ☒ Eliminating chemical use
☐ Capturing roof rain water for use in planted areas ☐ Using a drip soaker hose instead of a sprinkler
☒ Mulching ☒ Controlling pests by organic means or by encouraging beneficial insects
☒ Planting native plants suited to the area ☒ Greatly reducing or eliminating lawn areas

Please include a rough sketch or landscape diagram of your yard. If you would like to do so, enclose some photographs of your habitat and of you, your family or friends working in and enjoying your habitat. We cannot return the photos or sketch, however, so please be sure you have duplicates for your own use. Kindly keep your submission to a size no larger than could fit in an 11" x 17" envelope. **Be sure** to keep a copy of your completed application in case we need to contact you about your habitat.

Remember to submit the \$15 Program Enrollment Fee (check or money order) to cover our processing and handling costs. Make check payable to the National Wildlife Federation and send to:

Backyard Wildlife Habitat™ Program
National Wildlife Federation
8925 Leesburg Pike
Vienna, VA 22184-0001

Keep in Mind...

- Allow 6-8 weeks for processing of application
- \$15 application fee waived if you move and wish to certify your new home
- \$5 charge for a second certificate
- Be sure to enclose your payment!

For more information about the Backyard Wildlife Habitat program, visit www.nwf.org on the World Wide Web.



**NATIONAL
WILDLIFE
FEDERATION®**

FULTON HABITAT SITE

DEC 2000

○ TELEPHONE
POLE

thicket

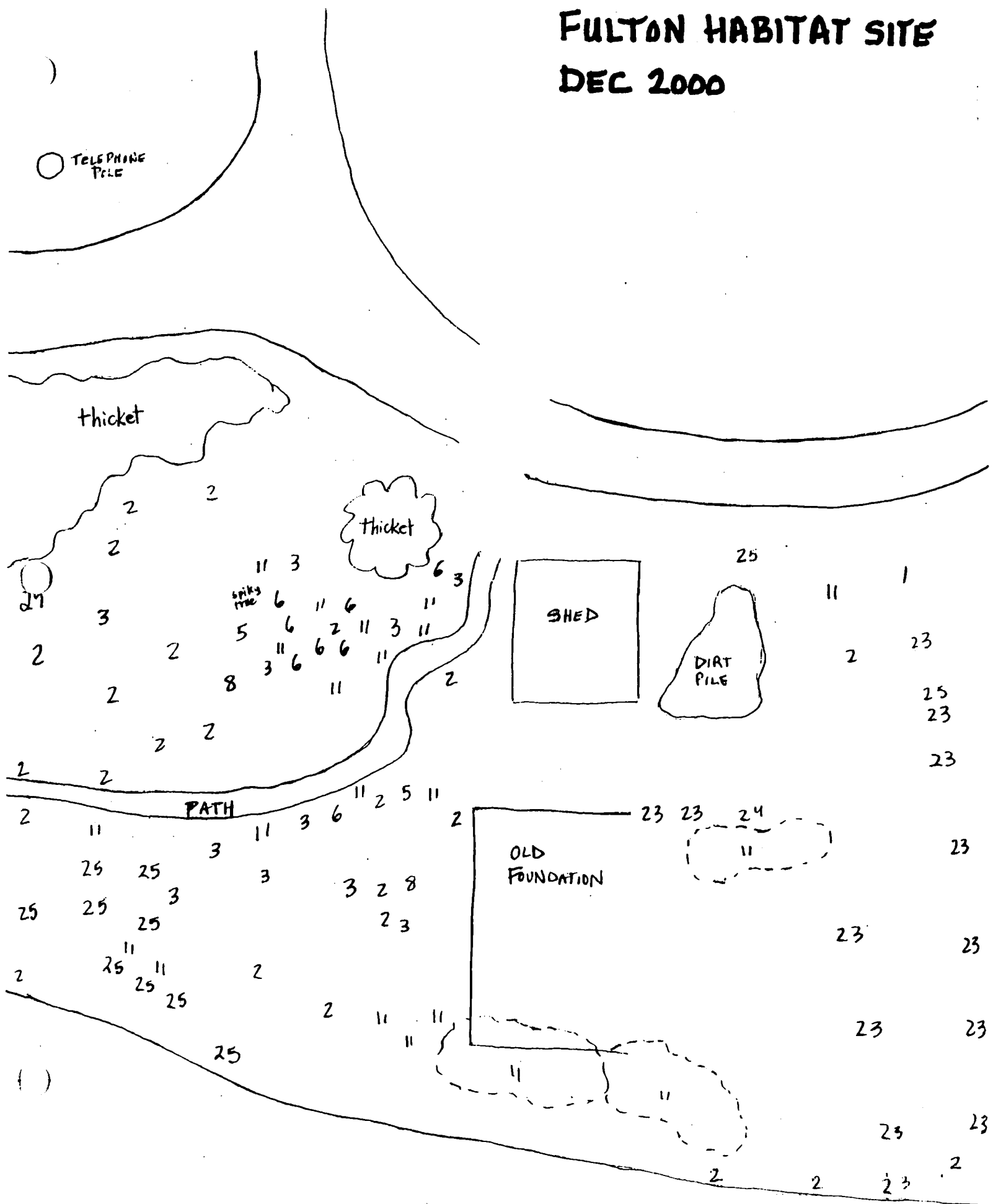
thicket

SHED

DIRT
PILE

PATH

OLD
FOUNDATION



ID number	Genus	species	Family	Common name
1	Acer			maple
2	Calocedrus	decurrens		incense cedar
3	Pseudotsuga	menziesii		Doug fir
4	Thuja	plicata		Red cedar
5	Gaultheria	shallon		Salal
6	Mahonia	aquifolium		Oregon grape
7	Oemleria	cerasiforma		Indian plum
8	Rubus	parviflorus		Thimbleberry
9	Rubus	spectabilis		Salmonberry
10	Vaccinium	parvifolium		Red huckleberr
11	Polystichum	munitum		Sword fern
12	Blechnum	spicant		Deer fern
13	Athyrium	felix-femina		Lady fern
14	Adiantum	pedatum		maidenhair fern
15	Iris	tenax		Oregon iris
16	Smilacina	racemosa		False Salomon
17	Vancouveria	hexandra		inside Out flow
18	Trillium	ovatum		Trillium
19	Fragaria			Strawberry
20	Tellima	grandiflora		Fringe cup
21	Tolmiea	menziesii		Piggyback plant
22	Ribes	sanguineum		Red flowering c
23	Corylus			Hazelnut
24	Rosa			Rose
25	Prunus			Cherry
26	Oxalis			wood sorrel
27	Asarum	caudatum		Ginger
28	Symphoricarpo	albus		Snowberry
29	Robinia			Locust?

***The National
Wildlife Federation
through its
Backyard Wildlife
Habitat Program
awards this
Certificate
of Achievement
to***



**BACKYARD WILDLIFE
HABITAT™
NATIONAL WILDLIFE FEDERATION®**

Clinton Community Gardens

*This Certificate recognizes the establishment
and maintenance of Backyard Wildlife Habitat*

no. 27286

*This habitat is certified in the National Wildlife Federation's worldwide
network of mini-refuges where, because of the owner's conscientious
planning, landscaping, and gardening, wildlife may find quality
habitat—food, water, cover, and places to raise their young.*

Mel Van Lutter
President

Application for Certification

Take heart, you needn't be a zoologist or botanist to fill out this application. The National Wildlife Federation looks forward to acknowledging your efforts in providing habitat for wildlife where you live or work. Do your best to fill out this application, and if there are problems, we'll get back to you with some suggestions. Within 6-8 weeks of receiving your application, we'll forward to you a beautiful personalized certificate suitable for framing and you have the option of purchasing a yard sign to educate others about your project.



Basic0

**BACKYARD WILDLIFE
HABITAT™**
NATIONAL WILDLIFE FEDERATION®

A.

LESLIE PAHL-KOSBALL

Applicant Name PORTLAND COMMUNITY GARDENS

Organization Name (if applicable) PORTLAND COMMUNITY GARDENS

Name(s) to Appear on Certificate CLINTON COMMUNITY GARDENS

Address of Habitat SE 18th / CLINTON, OR

City PORTLAND County MULTNOMAH

State/Province OREGON Country USA Zip/Postal Code 97206

Telephone _____ E-mail Address _____

Property Size (Sq. Ft. or Acres) 15,000 SQ FT

Office Use:

Habitat # _____

Fee Rcvd. _____

Certified _____

C.S. _____

Key Words _____

B.

If you are applying for someone else, or for an organization, in addition to the above, please fill out the following:

Contact Name LESLIE PAHL-KOSBALL

Address 6437 S.E. DIVISION ST.

City PORTLAND State/Province OR

Country USA Zip/Postal Code 97206

Telephone (503) 823-1612 E-mail Address pkleslie@aol.com

To which address should correspondence be sent? ☐ A ☒ B

Have you ever applied for certification before? ☒ Yes ☐ No If yes, list Habitat # 1997 BERRYDALE SE 90th / TAYLOR

1. FOOD/Plantings and Feeders

A. Do your best to list those plants on your property that might provide wildlife foods such as acorns, berries, nuts, seeds, buds, or nectar.

Large Trees	No.	Small Trees	No.	Shrubs	No.	Annuals & Perennials	No.
<u>Pear</u>	<u>1</u>	<u>willow</u>	<u>1</u>	<u>holodiscus discolor</u>	<u>1</u>	<u>Vancouveria</u>	<u>3</u>
<u>Italian plum</u>	<u>1</u>	<u>poplar</u>	<u>1</u>	<u>ribes sanguinum</u>	<u>1</u>	<u>fragaria</u>	<u>6</u>
<u>Hawthorne</u>	<u>1</u>	<u>Hawthornes</u>	<u>3</u>	<u>vaccinium ovatum</u>	<u>1</u>	<u>Mahonia</u>	<u>3</u>
<u>Libocedrus</u>	<u>1</u>	<u>fig</u>	<u>1</u>	<u>ribes bracteosum</u>	<u>1</u>	<u>reptans</u>	
<u>decurrens</u>		<u>Sambucus caerulea</u>	<u>1</u>	<u>Mahonia aquifolium</u>	<u>1</u>		

B. List the type and number of feeders and foods that you provide for wildlife. philadelphus lewisii 2

Feeder Type	No.	Foods	Visited By
<u>Vegetable garden</u>		<u>seeds, flowers</u>	

INCENSE
CANDLE

2. WATER/Drinking, Bathing

A. We provide water: ☒ Throughout the year

☐ Seasonally

B. We provide water in: ☒ Bird Bath
☐ Spring
☐ Water Garden
☐ Stream

☐ Water dripping into a bird bath

☐ Pond

☐ Other (describe):

3. COVER/Places to Hide

We provide wind-breaks and places for wildlife to hide from predators in the following manner:

☒ Dense Shrubs (which types?) Mahonia, philadelphus, fig tree, blackberry, spirea

☒ Evergreen Shrubs (which types?) " Vaccinium corymbosum, mahonia

☒ Brush Piles ☐ Log Piles ☐ Rock Piles/Walls ☒ Ground Covers ☐ Meadow, Scrub, or Prairie Patch

☐ Other (describe): this area is already planted

4. PLACES TO RAISE YOUNG

We provide the following for nesting birds, denning mammals, egg-laying reptiles and amphibians, fish, butterflies, and other insects and invertebrates.

☒ Mature Trees (which types?) plum, prune, cedar, hawthorne

☒ Small Trees (which types?) fig, willow, poplar, hawthorne

☒ Shrub Masses (which types?) spirea, butterfly bush (buddlia) 5-6 plants

☒ Trees with Nest/Den Cavities ☐ Dens in Ground/Rock ☐ Water Garden/Pond ☒ Nesting Boxes (4)

☐ Nesting Shelves ☒ Meadow, Prairie, or Scrub Patch: Size 1,500 sq. ft.

Which animals use them (birds, squirrels, bats, frogs, dragonflies, etc.)? butterflies, birds, squirrels

Plants for butterfly caterpillars (which types?) buddlia, oceanspray, diandra formosa

5. RESOURCE CONSERVATION

We are conserving water and other natural resources in our backyard and community by:

☒ Establishing a backyard wetland or drainage buffer areas to filter storm water and limit runoff off shed

☐ Capturing roof rain water for use in planted areas

☒ Mulching

☒ Planting native plants suited to the area

☒ Eliminating chemical use none

☐ Using a drip soaker hose instead of a sprinkler

☒ Controlling pests by organic means or by encouraging beneficial insects

☒ Greatly reducing or eliminating lawn areas

Please include a rough sketch or landscape diagram of your yard. If you would like to do so, enclose some photographs of your habitat and of you, your family or friends working in and enjoying your habitat. We cannot return the photos or sketch, however, so please be sure you have duplicates for your own use. Kindly keep your submission to a size no larger than could fit in an 11" x 17" envelope. **Be sure** to keep a copy of your completed application in case we need to contact you about your habitat.

Remember to submit the \$15 Program Enrollment Fee (check or money order) to cover our processing and handling costs. Make check payable to the National Wildlife Federation and send to:

Backyard Wildlife Habitat™ Program
National Wildlife Federation
8925 Leesburg Pike
Vienna, VA 22184-0001

Keep in Mind...

- Allow 6-8 weeks for processing of application
- \$15 application fee waived if you move and wish to certify your new home
- \$5 charge for a second certificate
- Be sure to enclose your payment!

For more information about the Backyard Wildlife Habitat program, visit www.nwf.org on the World Wide Web.

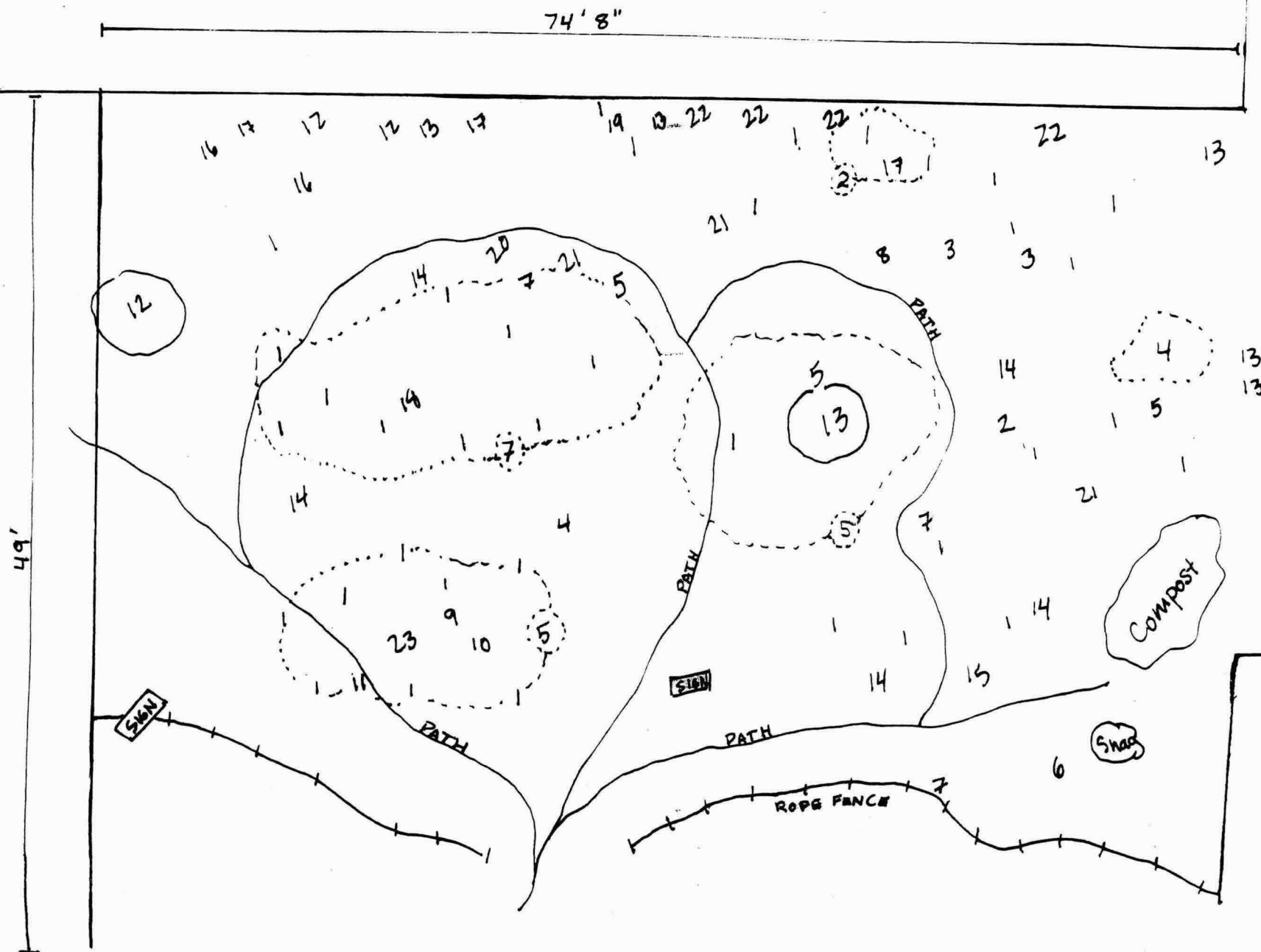


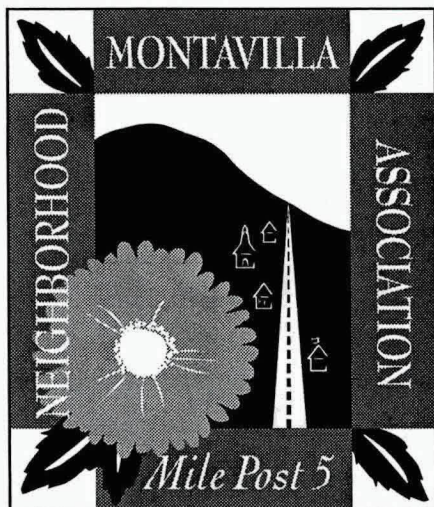
NATIONAL
WILDLIFE
FEDERATION®

ID	Map ID #	Genus	species	Family	Common name
11		Polystichum	munitum	Aspleniaceae	Sword Fern
52		Asarum	caudatum	Aristolochiaceae	Wild Ginger
63		Smilacena	racemosa	Liliaceae	False Saloman
84		Vancouveria	hexandra	Podophyllaceae	Inside Out Flow
95		Viola	palustris	Violaceae	Marsh Violet
106		Geranium		Geraniaceae	Geranium?
117		Tellima	grandiflora	Saxifragaceae	Fringe Cup
128					like Bleeding H
159		Aquilegia	formosa	Ranunculaceae	Red Columbine
1610					mystery garden
1711					?
2212		Prunus		Rosaceae	Cherry tree
2313		Acer	macrophyllum	Aceraceae	Broadleaf Mapl
2414		Acer	circinatum	Aceraceae	Vine Maple
2515		Alnus	rubra	Betulaceae	Unkn-red alder
2616		Rubus	parviflorus	Rosaceae	Thimbleberry
2717		Rosa		Rosaceae	unkn rose
2818		Sambucus		Caprifoliaceae	elderberry
2919		Holodiscus	discolor	Rosaceae	Oceanspray
3020		Rhamnus	purshiana	Rhamnaceae	cascara??
3121		Oemleria	cerasiformis	Rosaceae	Indian plum
3222		Mahonia		Berberidaceae	Oregon Grape
3423		Vaccinium	parvifolium	Ericaceae	Red Huckleberr

BERRYDALE HABITAT SITE

NOV 2000





President Joanna Wilson
Vice-President.... Kimberly McClain
Treasurer Frank Wildensee
Secretary..... Zana Herren
Newsletter Editor Alan Papesh
Mailing List..... Harry Bailey
Crime Prevention.... Joanna Wilson

Banner Committee Chair
 George McKeever
Land Use & Transportation
 Penelope Sanders

Board Delegate to SE Uplift
 Lisa Laurenceau

Members at Large
 Joel Bohrer, Alta Gaylord
 Bob Rathbun

- ♦ The Montavilla News is published bimonthly. The next issue will be published in October.
- ♦ Ads and articles should be submitted no later than September 15. Community members are welcome to submit articles for consideration. For more information, please phone Alan Papesh at 252-5552.
- ♦ Questions about the neighborhood association? Call Joanna at 253-3845.

MONTAVILLA News

Montavilla Neighborhood Association

August-September 2000

What can I do? How can I help?

by Joanna Wilson

Here are some ideas to help Montavilla become a better community. Friends for a Montavilla Library...we used to have one, but it was taken away from us. The nearest one is miles away. We need one of our own.

Montavilla Historic Society...there are many old homes and buildings here in our community. Some are being taken care of and others need help. We need to take an inventory of what we have and document the information.

Friends of Montavilla Parks...Harrison Park, Montavilla Park, and Berrydale Park & Community Gardens all exist within our neighborhood's boundaries. Is there room for more green areas? Let's find out!

Advocates for Montavilla Schools...we have four primary schools and one middle school. All of the schools and PTAs could use our help and support.

As residents of Montavilla, let's try to help.



A Great Summer of Community Building

by Joanna Wilson

We are in the middle of a great summer here in Montavilla with all of the activities happening around our community!

On Saturday, July 22, Taylor Court Grocery hosted a summer block party and street parade with floats, old cars, horses, and even the neighborhood fire truck. On Saturday, July 29, Montavilla Baptist Church held their Fun Fair at Berrydale Park. There were lots of fun activities for neighborhood families and the Multnomah County Health Department (in the NW Medical Teams van) was there to give kids their much needed immunizations for school.

The First Annual Montavilla National Night Out, organized by the Montavilla Neighborhood Association under the direction of Kimberly McClain, was a huge success on Tuesday, August 1. It was a party scene at Montavilla Park, with all our neighbors and visitors enjoying the great selection of desserts provided by the participants and local business sponsors of the event. Many of the kids were busy having fun in the pool...and everyone had a good time meeting their neighbors.

I would like to thank everyone for their support and hard work!

A Secret Garden in Montavilla

by Lori Vaskalis



If someone asked you for directions to Montavilla's only certified Backyard Wildlife Habitat Community Garden, would you know where to send them? Here's a clue...it's tucked away at the Berrydale Community Gardens at SE 90th and Taylor, and it's brimming with Northwest native plants and fruit trees just waiting to be enjoyed by neighbors. But it wasn't always that way.

Ten years ago an empty house occupied this site. Since then it has been transformed into a flourishing community garden. The habitat site was added in 1997—thanks to the National Wildlife Federation and Pacificorp—as a way to make the shaded area of the garden into a pleasant and productive spot for neighbors, gardeners, and wildlife alike. Landscape architect Gretchen Vadnais developed a design that focused on native plants—one that

would create a natural environment friendly to wildlife living in an urban setting surrounded by lawns and groomed areas.

With the addition of Nootka roses, Oregon grape, wild ginger, fringecup, elderberry, and sword fern—and birdbaths, brush piles and bird houses—habitat for wildlife was restored to a small corner of Montavilla by the project's many volunteers! Because the landscape provides food, water, cover, and places for birds and animals to raise young, it received official certification from the National Wildlife Federation (NWF) as part of their Backyard Wildlife Habitat™ program which began in 1973.

Youth groups regularly visit the habitat site for educational activities, and several garden tours visit each season, as well. Currently, the BWH garden is maintained in part by Parks & Recreation, Habitat Stewards volunteers, and

continued on page 4

Less Water for Le\$\$

Find out how you can reduce your water and sewer bills by attending a free **Water Conservation Workshop** sponsored by the Portland Water Bureau and the Community Energy Project. You will learn how to minimize water use in the garden, detect leaks around your home, repair leaky faucets and toilets, and much more. We will also share ways to live comfortably while reducing water use.

All Portland residents will receive a kit of conservation materials worth \$25...for FREE! The kit includes native wildflower seeds, a brass hose nozzle, watering can, shower timer, and more. Call the Community Energy Project at 284-6827 with questions or to register.

Tuesday, August 8

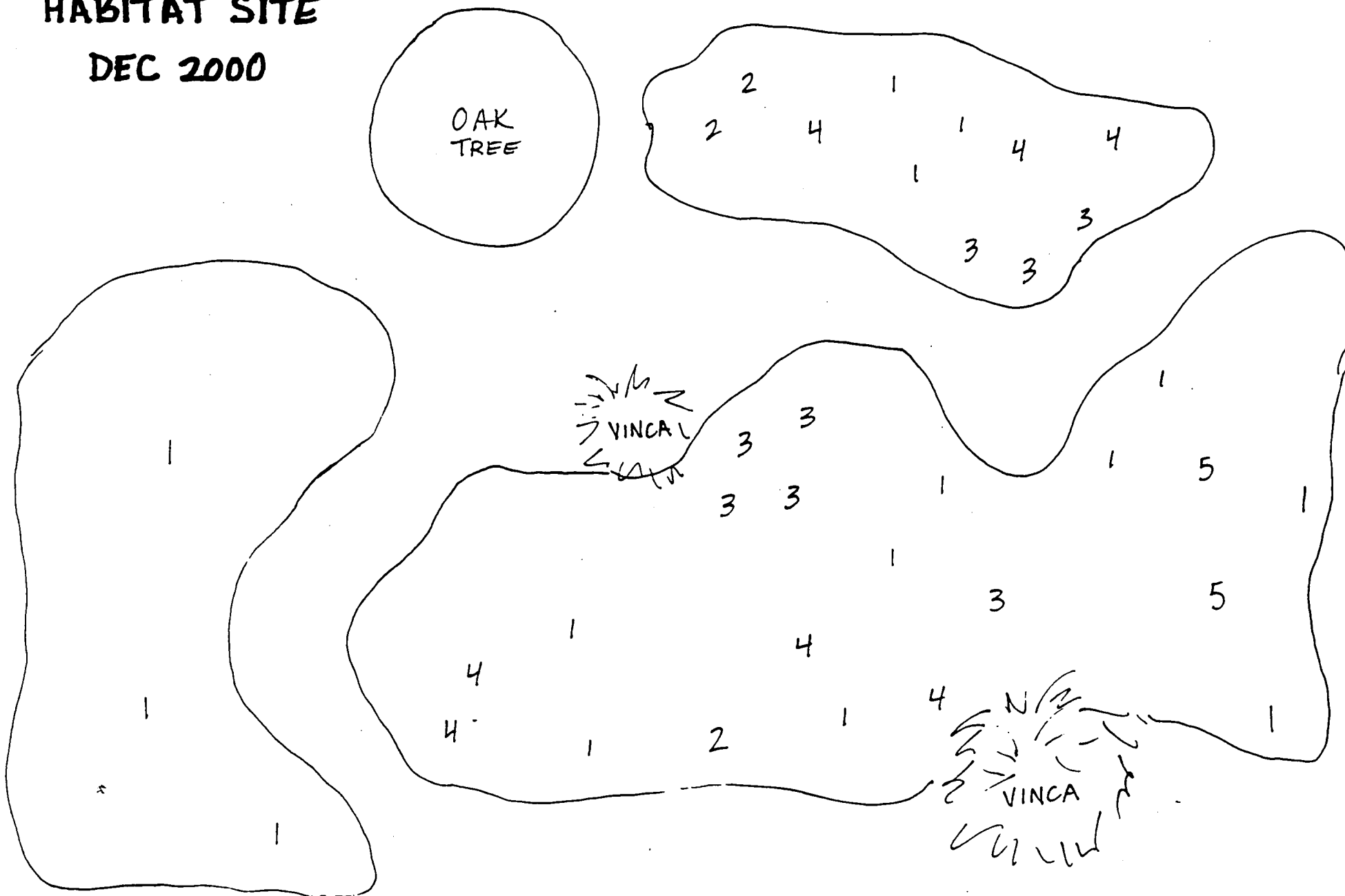
6:30-8:00 PM

East Portland Community Center
 740 SE 106th Avenue

FRONT AND CURRY HABITAT SITE

DEC 2000

NE CORNER



DAFFODILS

DAFFODILS

DAFFODILS

DAFFODILS

DAFFODILS



Regional Parks and Greenspaces Environmental Education Grant
No. 921707

Habitat Stewards™ Program Partnership
Between the National Wildlife Federation
and

Portland Parks & Recreation Community Gardens
FINAL REPORT
June 2001



NATIONAL
WILDLIFE
FEDERATION®

www.nwf.org™

Beth Stout
Education Coordinator
1680 N.E. 63rd Avenue
Hillsboro, OR 97124
503-693-8596
503-844-3876 fax
stout@nwf.org



June 8, 2001

Metro Regional Parks & Greenspaces
Attn: Environmental Education Grants
600 N.E. Grand Avenue
Portland, OR 97232

Re: Grant No. 921707

Dear Metro Friends:

Enclosed with this letter is National Wildlife Federation's (NWF) Final Grant Report for Grant No. 921707. There are two copies of this report, one for Metro and one for the U.S. Fish and Wildlife Service.

Thank you again for the opportunity to pilot NWF's Habitat Stewards volunteer program in partnership with Portland Parks & Recreation's Community Gardens Program. Our partnership has been extremely successful and has, to date, resulted in not one but two training sessions for a total of 22 volunteers trained in 2000 and 21 trained in 2001, and more than 200 hours of volunteer time provided to the program.

We are asking for reimbursement in the amount of \$3087.90. Once again, I appreciate the support we have received from both Metro and USFWS.

Sincerely,

Beth Stout
Education Coordinator

enclosures

National Wildlife Federation, 1680 N.E. 63rd Avenue, Hillsboro OR 97124
503-693-8596 503-844-3876(fax) stout@nwf.org
418 First Avenue West, Seattle, WA 98119
206-285-8707 206-285-8698 (fax)

Metro Regional Parks and Greenspaces Environmental Education Grant No. 921707
Habitat Stewards Program Partnership
Final Report - Budget
June 2001

Materials & Supplies

2/7/2000	Amazon.com - books	\$ 95.20 115.00
2/9/2000	Peters Office Supply - binders	\$ 125.00
2/10/2000	Amazon.com - books	\$ 107.00
2/21 &		
2/29/2000	Peters - binders & name tags	\$ 52.25
2/25/2000	Amazon.com - books	\$ 46.80
2/28/2000	Refreshments/Journal books	\$ 23.97
3/3/2000	East Multnomah Soil & Water District - Portland Plant Lists	\$ 150.00
3/3/2000	Fred Meyer - workshop supplies	\$ 20.00
3/13/2000	Cake for training class	\$ 9.99
6/13/2000	Justin Boe - purchase books	\$ 66.52
6/23/2000	Rob Marhill - plants for garden	\$ 40.54
9/25/2000	NWF - Clinton Garden certification & sign	\$ 37.00
9/25/2000	Clinton Garden plants	\$ 27.92
10/9/2000	Garden markers	\$ 16.78
4/25/2001	NWF - Training materials	\$ 125.00
5/31/2001	Portland Nursery - Native Plants	\$ 70.57
	<u>Subtotal</u>	<u>\$1014.54</u> 1034.34

Professional/Outside Services

3/13/2000	8 \$50 honoraria for speakers for training	\$ 400.00
7/1/2000	Justin Boe - total compensation	\$1109.33
9/15/2000	4 Honoraria	\$ 125.00
3/7/2001	Print Habitat Stewards brochures	\$ 439.03
	<u>Subtotal</u>	<u>\$2073.36</u>
	Total	\$3087.90 3,107.7
	<u>Grant Amount</u>	<u>\$3105.00</u> 3150
	Amount to be Reimbursed	\$3087.90 3107.7

**FINAL REPORT
HABITAT STEWARDS™
ENVIRONMENTAL EDUCATION GRANT NO. 921707
NATIONAL WILDLIFE FEDERATION**

Summary of Project and Accomplishments

The Habitat Stewards project funded by this Regional Parks and Greenspaces Environmental Education grant is a partnership between the National Wildlife Federation (NWF) and Portland Parks & Recreation's Community Gardens program (Parks). With the support of NWF, Parks hosted two Habitat Stewards training sessions, one in Spring 2000 and one in Spring 2001, reaching a total of 43 participants. These participants continue to "pay back" volunteer hours by assisting in the creation and maintenance of habitat sites at community gardens and by participating in outreach activities designed to educate community gardeners, children, and the general public about gardening for wildlife.

Habitat Stewards is the volunteer training and mentoring arm of NWF's Backyard Wildlife Habitat™ program. See attachments. Through this program, NWF assists individuals, families, and organizations in discovering wildlife and connecting with nature through the creation of wildlife habitat at home, school, and places of work, worship, and recreation. Parks promotes and provides gardening and greening opportunities for the physical and social benefit of the people and neighborhoods of Portland.

The partnership between NWF and Parks was designed to provide training to volunteers who would assist in increasing the number and quality of wildlife habitat sites at community gardens in Portland; help maintain those sites; educate other community gardeners about the importance of gardening for wildlife and how to incorporate habitat in community gardens; and to involve children in gardening for wildlife activities at community gardens.

The specific objectives outlined in our grant application were met as follows:

- **Helping to prepare the Fulton, Clinton and Berrydale Community Gardens for habitat creation and enhancement, including mapping, site preparation, planting and labeling plants, habitat maintenance, and community outreach.**

Although the Berrydale Community Garden was already a certified habitat site, the efforts of Habitat Stewards and other volunteers have led to enhancement of the site. Both the Clinton and Berrydale Community Gardens have been certified with NWF as a result of the Habitat Stewards program (see below for more details).

- **Training between 15 and 25 Habitat Stewards.**

We exceeded this objective by training 43 Habitat Stewards in two training sessions.

These training sessions featured guest speakers who focused on topics including: pollinator gardens; urban wildlife; watersheds; habitat design; native plants, nature interpretation; native plant propagation; fundraising; and visits to habitat sites including backyards, schools and community gardens. See attachments: training schedule for February/March 2000 and for March/April 2001. Changes to the format and content of the second training were made based on feedback received from participants in the first training. *See below.*

Sample Habitat Stewards Profiles

Amy Schroth and Gerald Decker, two Habitat Stewards from the Spring 2000 training, have met regularly since then to organize restoration plans for the Fulton Community Garden habitat area. Once used by homeless people and as a dumping ground by the gardeners, it is being restored to a more diverse ecosystem. Taking one section at a time, Amy and Gerald have removed extensive coverings of blackberry, morning glory, clematis and ivy. Forty cedar and Douglas-fir saplings have been planted and a new path meanders through the restoration area. A ground-level water source and 3 logs serve as a focal point and as additional habitat features.

Steven Ninemire and Terrie Ezzat have been working at the Fulton site since their Spring 2001 training. They have organized two work parties to try to control invasive marsh marigold, morning glory and clematis. They have weeded around all the existing native plants and have placed thick layers of cardboard and mulch to improve the soil and control weeds. Both visit the garden at least once a week and are creating a work plan for the site.

- **Asking each volunteer to evaluate the training and their payback activities and incorporating their ideas into future programs.**

The following is a sampling of suggestions made by participants regarding future trainings:

- Clarify how each class ties into the entire training to make sure there is a thread that runs through the entire program;
- More hands-on activities, including site visits.
- Set aside networking time for participants.
- Arrange the classroom in a circle rather than in rows.
- More clarity on volunteer payback opportunities, including a list of projects available.
- Provide less manual labor payback hours and more knowledge-oriented activities where the expertise provided in the training can be used.

Some of these suggestions were incorporated into the Spring 2001 training.

- **Certifying the Fulton and Clinton Community Gardens as NWF Backyard Wildlife Habitat sites and enhancing the existing certified habitat at the Berrydale Community Garden.**

Both the Fulton and Clinton Community Gardens were certified as NWF Backyard Wildlife Habitat sites as a result of the Habitat Stewards program. See attachments: Application for Certification for the Fulton and Clinton Community Gardens. The Berrydale Garden, which was a certified habitat site, has been enhanced significantly as a result of the Habitat Stewards program. See attachment: Montavilla News, "A Secret Garden in Montavilla."

To date, Habitat Stewards have paid back a total of more than 200 hours at community garden sites and special events. These payback opportunities have included:

September 23, 2000	Clinton Community Garden work party (6 Habitat Stewards)
October 7, 2000	Home Is Where The Habitat Is public workshop (3 Habitat Stewards)
March 10, 2001	Habitat Awakening at Fulton Community Garden (3 Habitat Stewards)
April 20, 2001	Dishman Center Earth Day (2 Habitat Stewards)
April 21, 2001	Fulton Seed and Plant Exchange (1 Habitat Steward)
April 24, 2001	Clinton clean-up (1 Habitat Steward)
April 28, 2001	Procession of the Species (2 Habitat Stewards)

In addition, more community gardens are gearing up to become habitat sites. These gardens include:

Sewallcrest Community Garden (S.E. 31st & Market)

A steward from the 2001 training is working on a design for a habitat area here. She hopes to involve the adjacent Edwards School, neighborhood groups and community gardeners.

John's Community Garden (N. Edison & Johns)

The creation of a habitat site here is under way. Work has begun with a landscape architect and the area is being weeded and contoured to create a path and variations in the terrain. Donations of concrete will be used to lay the walkway and rocks and logs will be placed around the area, as well.

- **Establishing Habitat Stewards community outreach activities, including teaching adult and youth members of the community about the habitats, guiding those community members in participating in habitat projects, and recruiting new volunteers.**

Habitat Stewards participated in a variety of outreach activities and the Habitat Stewards program hosted an October 7, 2000, special event entitled "Home Is Where The Habitat Is" which featured guest speakers on gardening for birds, hummingbirds and butterflies and using native plants in the habitat. More than 30 members of the public participated in this event, which also featured a tour of the Clinton Community Garden and its habitat site. See attachments.

During the summer of 2001, Westside Youth and Family Services (a program with the Neighborhood House) will come to the habitat site at the Fulton Community Garden every Monday for 1 hour and 15 minutes. The program aims to provide middle school age children with the opportunity to observe and explore nature through activities, games and service projects. The children will plant native plants and create a mural on the Fulton garden shed.

How We Did It

Following the timeline/task outline in our grant proposal, we were able to successfully organize the Spring 2000 Habitat Stewards training. We sent out press releases that resulted in numerous newspaper calendar notices and other publicity. We also used e-mail and the internet to advertise the training. We did the same for the Spring 2001 training.

Grant funds enabled us to purchase materials and supplies and to pay for speakers for training sessions and for a temporary, part-time project assistant in 2000. In 2001, Parks provided the in-kind services of an Americorps project assistant. These assistants were invaluable in helping to make the project a success because they were able to devote their time and attention to nurturing the Habitat Stewards volunteers and to organizing meaningful volunteer opportunities for them. See Attached Budget.

Especially useful for the Spring 2000 training were the resource materials we were able to purchase for each Habitat Steward. These included bird and butterfly field guides and native plant books. Although fewer resource materials were provided for the Spring 2001 training, we did provide complete National Wildlife Federation Habitat Stewards training kits to each participant.

Parks has been focusing on finding meaningful volunteer opportunities for all the Habitat Stewards and has begun to expand the number of Community Garden sites with potential for habitat projects. See attachments. They have successfully involved additional community volunteers in all of the habitat projects. For example, at the Habitat Awakening at the Fulton site, along with three Habitat Stewards, there were 10 additional volunteers. And on May 5, 2001, a Clinton work party attracted three Habitat Stewards and one community volunteer.

Successes, Challenges and Helpful Hints

We were very successful in attracting high-quality participants to both trainings. However, we were on a learning curve when it came to providing quality volunteer opportunities.

The Habitat Stewards were looking for a “niche” where they could apply what they learned in the training at locations convenient to where they lived and with the potential for making a difference at that site. NWF and Parks struggled with balancing providing those opportunities and, at the same time, managing all of the other programs they are responsible for.

Parks’ hiring of Americorps Volunteer Kirsten Gellella as the program’s volunteer coordinator has helped the program immensely in balancing the needs of the Habitat Stewards and the realities of providing and organizing volunteer opportunities. Any organization interested in starting a volunteer program should work toward the goal of having a volunteer coordinator.

The Habitat Stewards program has provided Parks with outstanding volunteers who are dedicated to the creation and enhancement of habitat sites at community gardens in Portland. Parks is now moving toward involving those volunteers in education and interpretation activities at various community garden sites. NWF has benefitted from this program in that these 43 volunteers are spokespersons for gardening for wildlife and for the need to save a place for wildlife in places like community gardens and they will continue to outreach to the general public as they participate in activities organized by Parks.