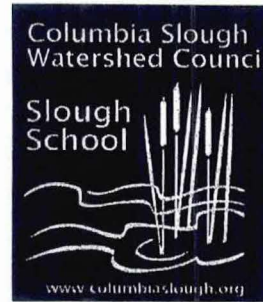


The Slough School

An Educational Program of the
Columbia Slough Watershed Council

sloughschool@columbiaslough.org
503 281-1132



Final Report- Written Summary Metropolitan Greenspaces Grant # 924579 March, 2004

1. Project Steps Completed

The objective of the project titled, "Slough School Educational Materials Development" was to create six curricular kits to be used by participants and partners of the Slough School program. This objective was met, the kits were created, and they have been used with various student groups. The kits have also been used by educators outside of the Slough School program and a tracking system has been created to check the materials out and receive feedback. We will continue to use the curricular kits in Slough School activities and adjust the contents based on feedback received from students and educators.

2. Actual Total Budget

Total amount requested from Metro:	\$3,400.00
Please see expenditures spreadsheet for details	
Total amount of match funds and in-kind donations:	\$5,202.08
Please see below and attached pages	
Total Actual Project Budget:	\$8,602.08

3. Partners Involved

Through this project, 2 volunteers donated a total of 44 hours to the creation of the Slough School Educational Materials (**total volunteer match: \$960.00**). In addition, the following partners provided matching funds and in-kind donations:

Columbia Slough Watershed Council- personnel time by Education Director in organizing, developing and creating curricular kits, office/computer use, overhead costs (**total in-kind match: \$2,998.88**).

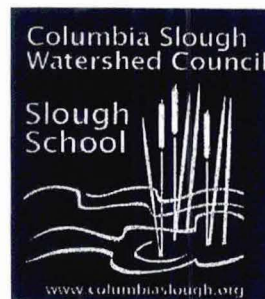
Lower Columbia River Estuary Partnership- personnel time by Education Director and two Educators in development, laminated materials, plants, color overheads, slides (**total in-kind match: \$897.50**).

City of Portland's Clean Rivers Education Program- personnel time in developing curricular kits, activity materials, lamination, color copies, plant ID cards (**total in-kind match: \$343.00**).

The Slough School

An Educational Program of the Columbia Slough Watershed Council

sloughschool@columbiaslough.org
503 281-1132



Final Report- Written Evaluation and Comments Metropolitan Greenspaces Grant # 924579 March, 2004

Project Evaluation

The objective of the Slough School Educational Materials Development Project was to create educational materials, in the form of curricular kits, to be used in classrooms and field sites throughout the Columbia Slough Watershed. Components for each kit include things like tracking field guides, color slides, replica animal skulls, sampling equipment and curricula for each topic. Please see the attached photos for documentation of some of the kits created through this project.

In total, **six** curricular kits have been created. In addition, one curricular kit was donated by the City of Portland's Clean Rivers Program for use by Slough School. The education materials created cover the following topics:

Fish Biology
Ethnobotany
Macroinvertebrates- classroom study
Macroinvertebrates- field study
Animal Tracking
Wetlands
Greenspace Activity Box

The topics covered differ slightly from the topics proposed in the original project proposal. The changes were driven by educator feedback and curricular needs of the Slough School program. Flexibility in choosing the topics and direction of the kits after the project began helped to make the project successful and its products useful. An evaluation form for the curricular kits and a system of checking the kits out to other educators was also a part of this project.

The educational goal of the Slough School is to reach 3,000 students from 25 schools within the Columbia Slough Watershed on an annual basis. This project has impacted these students, who come from the cities of Portland, Gresham and Fairview. Educators from other organizations have also used the materials and will continue to do so in the future, which expands the audience served by these education materials.

Overall, I feel the project was a success; the products are a valuable asset and will continue to expand the educational capacity of Slough School. In retrospect, however, I believe the amount of time proposed to complete the project was underestimated and the timeline was a bit ambitious. The development of the kits and the process of procuring the materials was a time-intensive

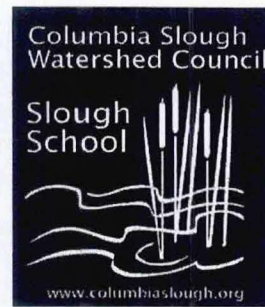
process, although I certainly think that this project was a good investment of time and money. The assistance of partner organizations was appreciated, although one potential partner was unable to participate after the timeline was adjusted. Additionally, finding successful curricula that already existed in the content areas of the curricular kits was also very valuable. Originally, I had expected to create many of the curricular activities myself. However, after getting feedback from other educators and investigating existing curricula, I found a number of successful matches. For example, the animal tracking curriculum purchased with project funds from a local expert was superior to any curricular pieces that I could have created in this area with limited tracking training. In the future, I would encourage others interested in similar endeavors to become familiar with existing curricula so as not to duplicate efforts.

**Evaluation and Comments prepared by Rachel Felice, Slough School Education Director.
Please direct any questions or inquiries about checking out the curricular kits to:
(503) 281-1132 or rachel.felice@columbiaslough.org**

The Slough School

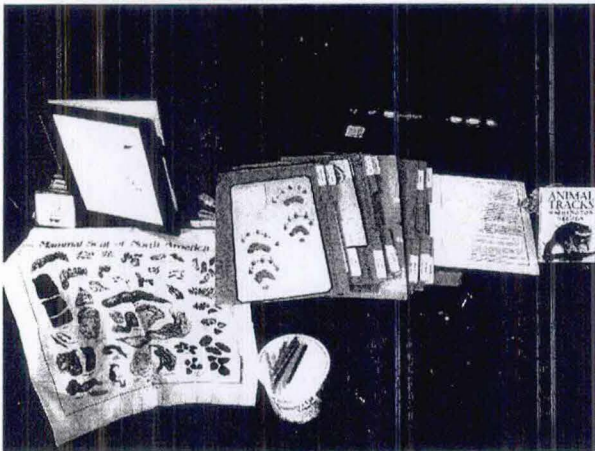
An Educational Program of the
Columbia Slough Watershed Council

sloughschool@columbiaslough.org
503 281-1132



Final Report- Photo Documentation Metropolitan Greenspaces Grant # 924579 March, 2004

Some of the curricular kits created through this project are pictured below:



Animal Tracking



Ethnobotany



Macroinvertebrates- classroom kit



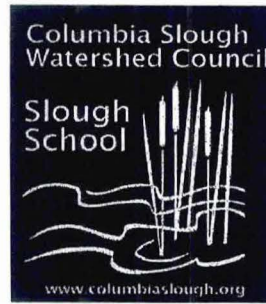
Fish Biology

Photo Documentation prepared by Rachel Felice, Slough School Education Director. Please direct any questions or inquiries about checking out the curricular kits to: (503) 281-1132 or rachel.felice@columbiaslough.org

The Slough School

An Educational Program of the
Columbia Slough Watershed Council

sloughschool@columbiaslough.org
503 281-1132



Evaluation of Slough School Curricular Kit and Materials

Curricular Topic: _____ Dates you used materials: _____

School: _____ Grade: _____ Number of students: _____

How did you hear about kits? _____ Your name: _____

Thank you for being involved in the Slough School program! Your responses will help us evaluate and improve our curricular kits and materials.

1. Was the curricular kit well organized?

1 2 3 4 5
Not very organized Somewhat organized Very well organized

2. Did you feel the materials were age- appropriate?

1 2 3 4 5
Not age appropriate Somewhat appropriate Extremely age appropriate

3. Were your students engaged in the materials or activities?

1 2 3 4 5
Not very engaged Somewhat engaged Extremely engaged

4. What is your overall evaluation of these educational materials?

1 2 3 4 5
Not very useful Somewhat useful Extremely useful

5. What did you particularly like?

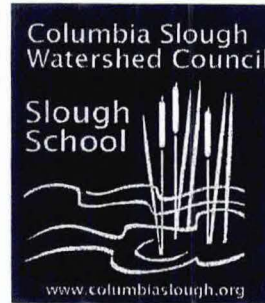
6. What recommendations do you have for improvement?

7. What related activities have you done (or plan to do) with your students?

The Slough School

An Educational Program of the
Columbia Slough Watershed Council

sloughschool@columbiaslough.org
503 281-1132



Slough School Curricular Kit and Materials

Thank you for being involved in the Slough School program! This curricular kit has been designed to enhance classroom activities for you and your students. Please contact Slough School with any questions or to make arrangement for return of the kit.

Curricular Topic: Ethnobotany
Recommended Grades: 2-12

Below is a list of materials that belong in this curricular kit. Please use the materials with your students and return the complete kit to the Slough School when finished. **Materials noted by "Exp" may be used by you and your student and will be replenished by Slough School upon return of the kit.**

Items	Quantity
Curricular Binder	1
Overhead set	1
Folders	
Maps (in folders)	
Basket	1
Plant Samples (Hazlenut, Cedar, Rose, Cattail)	4
Cedar Book	1
Native American Legends book	1
Laminated Cordage Instructions	15
Rafia for Cordage	Exp
Beads for Cordage	Exp
Masking Tape	Exp

These materials are property of the Slough School, an educational program of the Columbia Slough Watershed Council. This kit was created with funds from a Metropolitan Greenspaces Grant, a program of the US Fish and Wildlife and Metro Regional Government.