

Regionally Significant Riparian Corridors

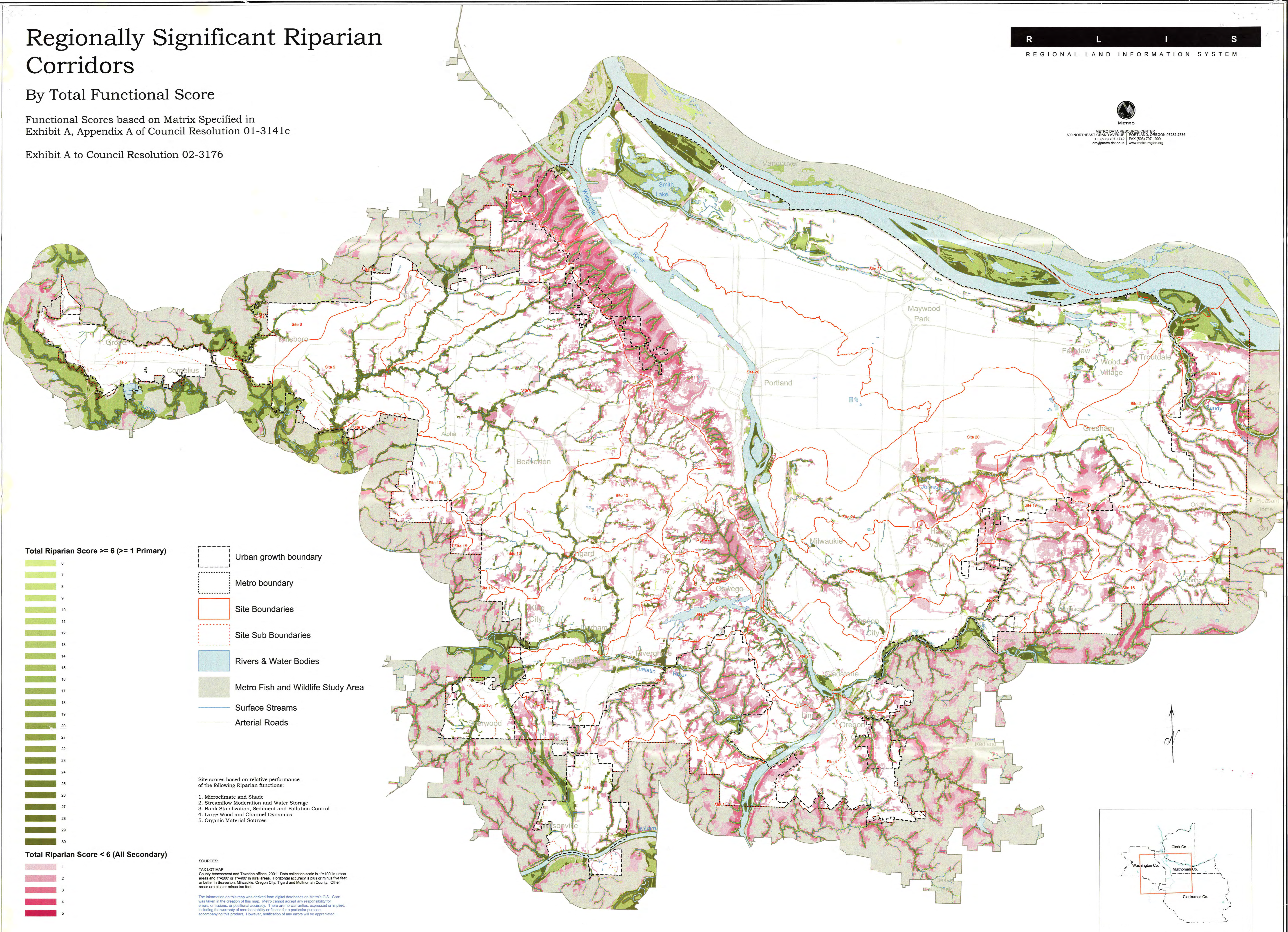
By Total Functional Score

Functional Scores based on Matrix Specified in Exhibit A, Appendix A of Council Resolution 01-3141c

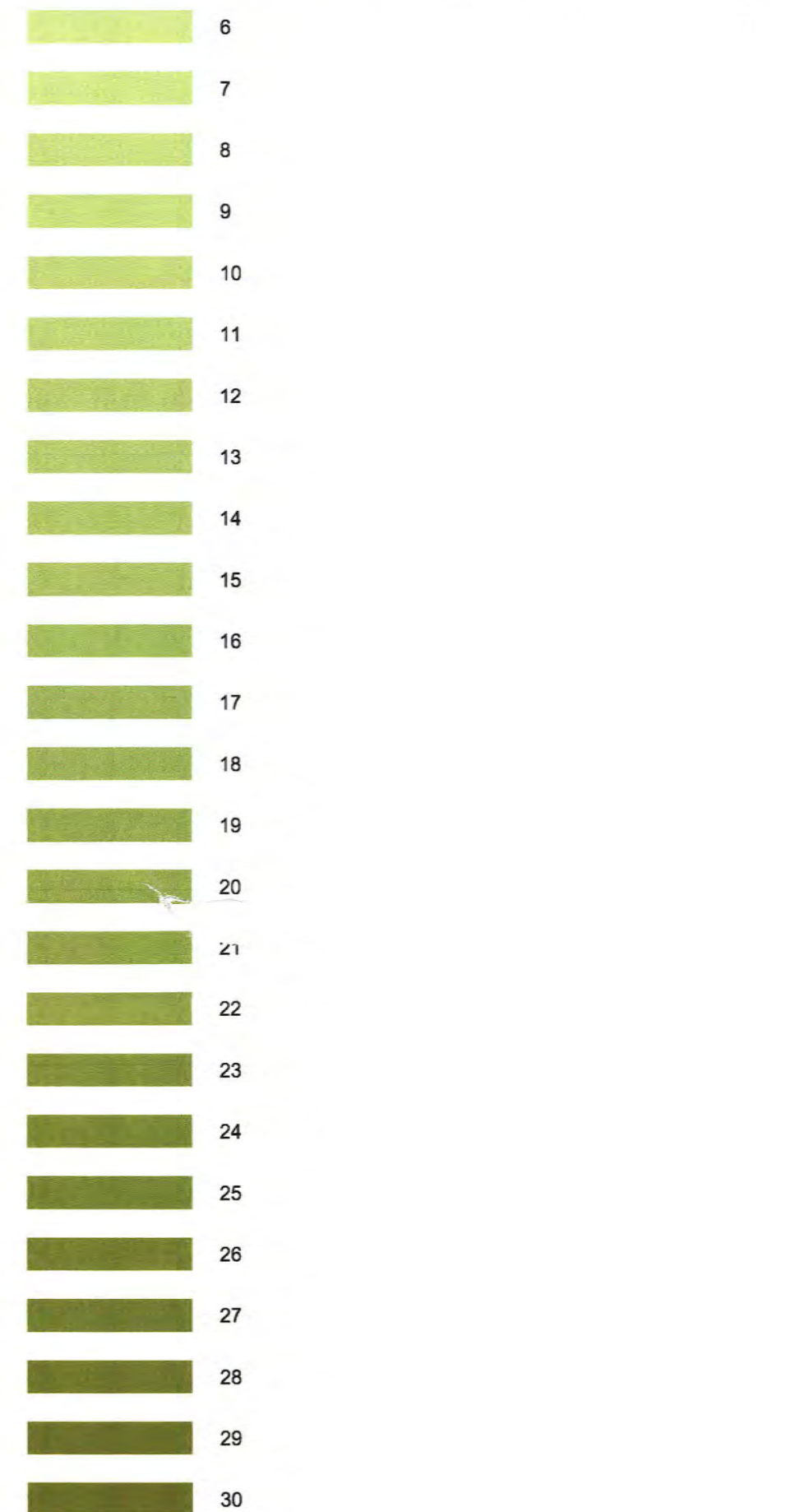
Exhibit A to Council Resolution 02-3176



METRO DATA RESOURCE CENTER
600 NORTHEAST GRAND AVENUE | PORTLAND, OREGON 97232-2736
TEL (503) 997-1742 | FAX (503) 997-1909
drc@metro.dst.or.us | www.metro-region.org



Total Riparian Score >= 6 (>= 1 Primary)



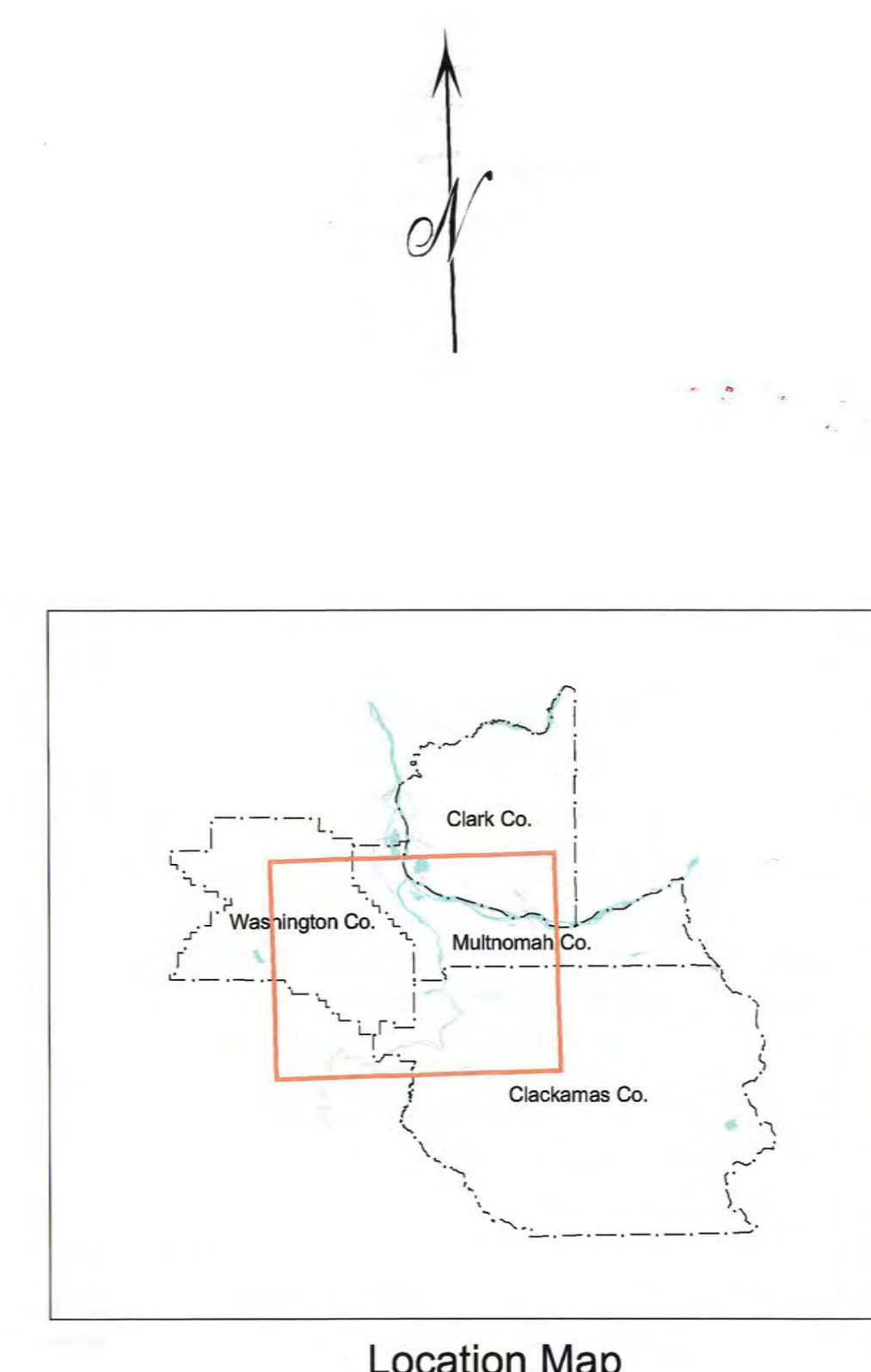
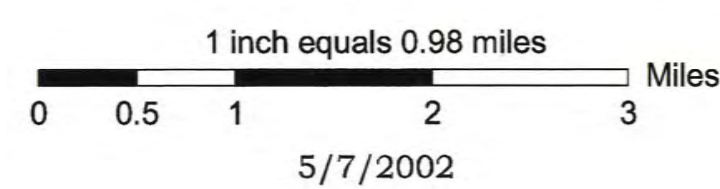
Total Riparian Score < 6 (All Secondary)



- Urban growth boundary
- Metro boundary
- Site Boundaries
- Site Sub Boundaries
- Rivers & Water Bodies
- Metro Fish and Wildlife Study Area
- Surface Streams
- Arterial Roads

Site scores based on relative performance of the following Riparian functions:
 1. Microclimate and Shade
 2. Streamflow Moderation and Water Storage
 3. Bank Stabilization, Sediment and Pollution Control
 4. Large Wood and Channel Dynamics
 5. Organic Material Sources

SOURCES:
 TAX LOT MAP
 County Assessment and Taxation offices, 2001. Data collection scale is 1"=100' in urban areas and 1"=200' or 1"=400' in rural areas. Horizontal accuracy is plus or minus five feet or better in Beaverton, Milwaukie, Oregon City, Tigard and Multnomah County. Other areas are plus or minus ten feet.
 The information on this map was derived from digital databases on Metro's GIS. Care was taken in the creation of this map. Metro cannot accept any responsibility for errors, omissions, or positional accuracy. There are no warranties, expressed or implied, including the warranty of merchantability or fitness for a particular purpose, accompanying this product. However, notification of any errors will be appreciated.



080802c-28

TO: METRO COUNCIL FROM: PLANNING DEPARTMENT DATED: 8/8/2002
OVERSIZED MAP: REGIONALLY SIGNIFICANT RIPARIAN CORRIDORS BY TOTAL
FUNCTION SCORE EXHIBIT A TO RESOLUTION No. 02-3176 ADOPTED BY
METRO COUNCIL 8/8/02

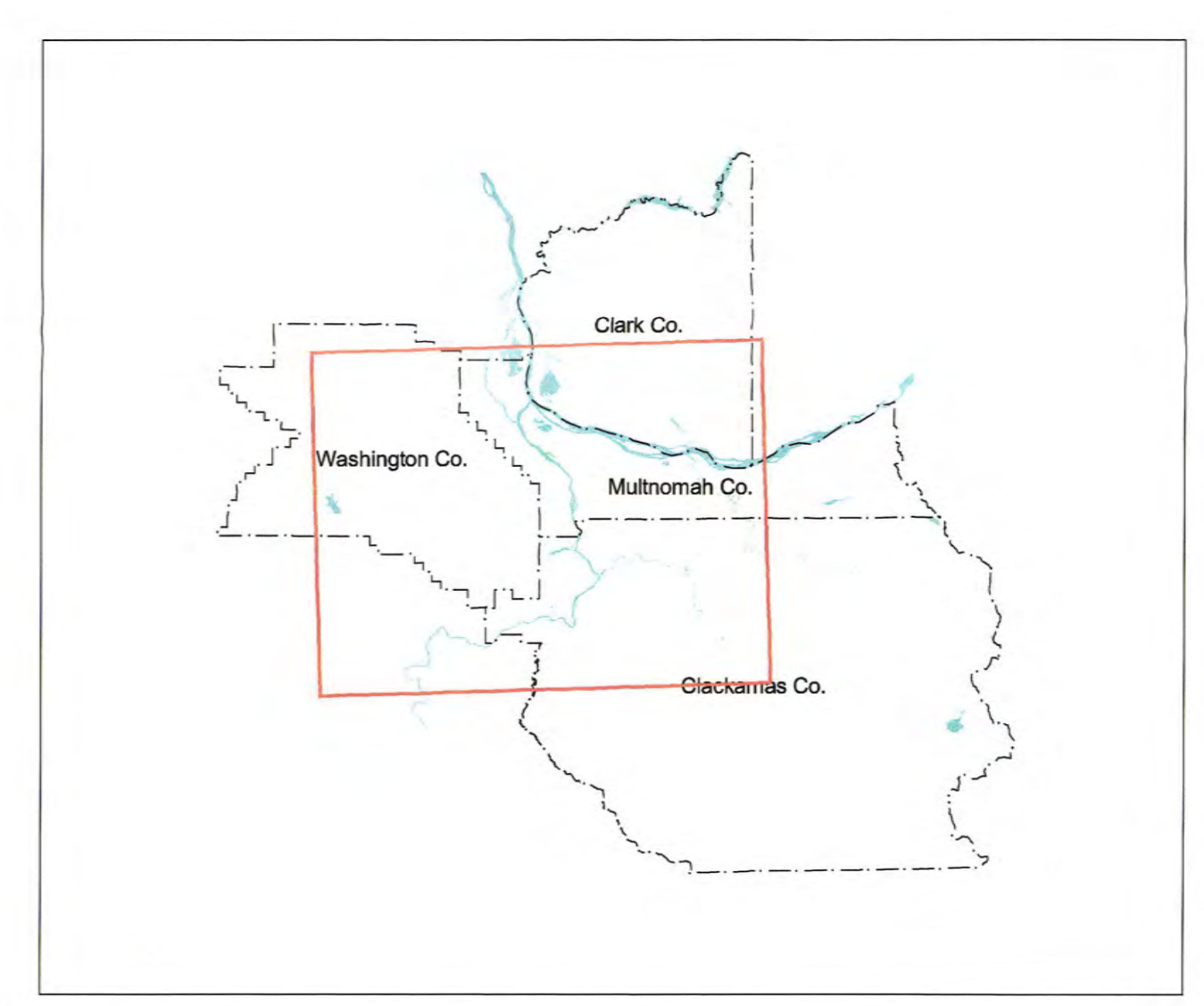
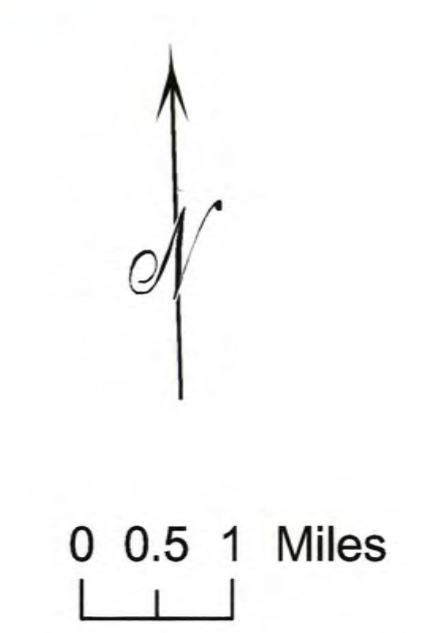
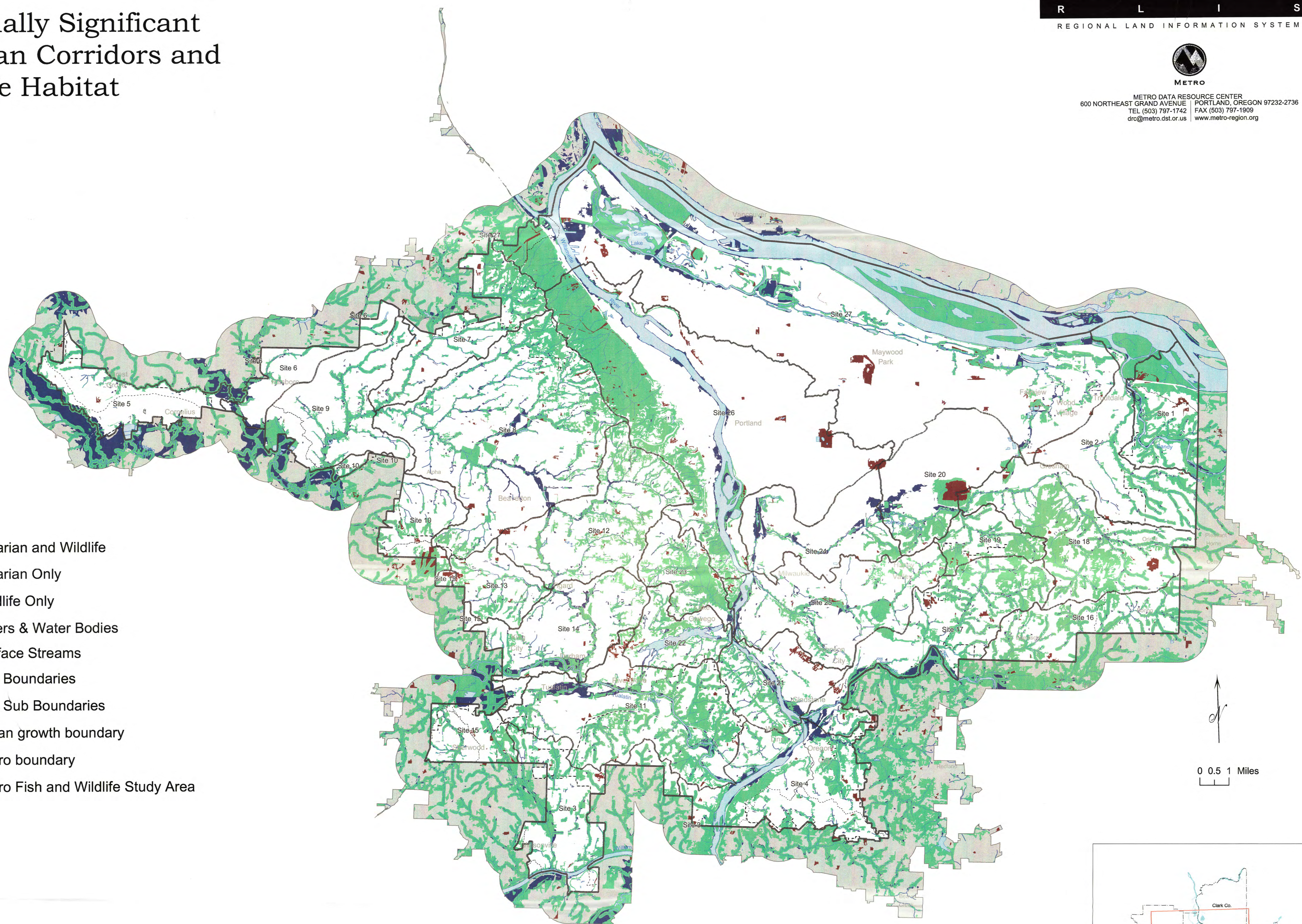
Regionally Significant Riparian Corridors and Wildlife Habitat

R L I S
REGIONAL LAND INFORMATION SYSTEM



METRO DATA RESOURCE CENTER
600 NORTHEAST GRAND AVENUE | PORTLAND, OREGON 97232-2736
TEL (503) 797-1742 FAX (503) 797-1909
dro@metro.dst.or.us www.metro-region.org

- Riparian and Wildlife
- Riparian Only
- Wildlife Only
- Rivers & Water Bodies
- Surface Streams
- Site Boundaries
- Site Sub Boundaries
- Urban growth boundary
- Metro boundary
- Metro Fish and Wildlife Study Area



Location Map

SOURCES:
TAX LOT MAP
County Assessment and Taxation offices, 2001. Data collection scale is 1"=100' in urban areas and 1"=200' or 1"=400' in rural areas. Horizontal accuracy is plus or minus five feet or better in Beaverton, Milwaukie, Oregon City, Tigard and Multnomah County. Other areas are plus or minus ten feet.

The information on this map was derived from digital databases on Metro's GIS. Care was taken in the creation of this map. Metro cannot accept any responsibility for errors, omissions, or positional accuracy. There are no warranties, expressed or implied, including the warranty of merchantability or fitness for a particular purpose, accompanying this product. However, notification of any errors will be appreciated.

080802c-26

TO: METRO COUNCIL FROM: PLANNING DEPARTMENT DATED: 8/8/2002
OVERSIZED MAP: REGIONALLY SIGNIFICANT RIPARIAN CORRIDORS AND
WILDLIFE HABITAT EXHIBIT A TO RESOLUTION NO. 02-3218A ADOPTED BY
METRO COUNCIL 8/8/02

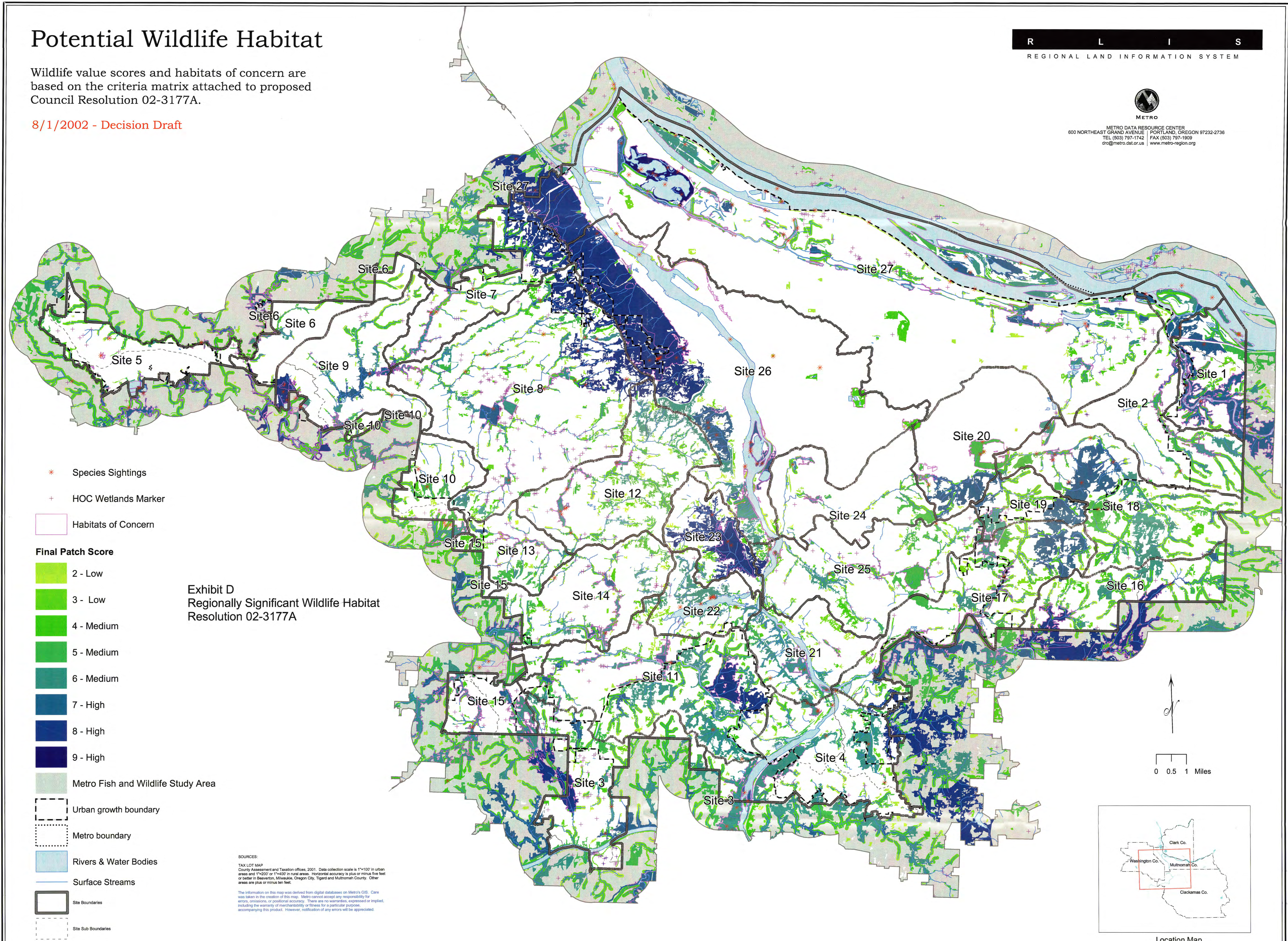
Potential Wildlife Habitat

Wildlife value scores and habitats of concern are based on the criteria matrix attached to proposed Council Resolution 02-3177A.

8/1/2002 - Decision Draft



METRO DATA RESOURCE CENTER
600 NORTHEAST GRAND AVENUE PORTLAND, OREGON 97232-2736
TEL (503) 797-1142 FAX (503) 797-1909
drc@metro.dst.or.us www.metro-region.org



- * Species Sightings
- + HOC Wetlands Marker
- Habitats of Concern

- Final Patch Score**
- 2 - Low
 - 3 - Low
 - 4 - Medium
 - 5 - Medium
 - 6 - Medium
 - 7 - High
 - 8 - High
 - 9 - High

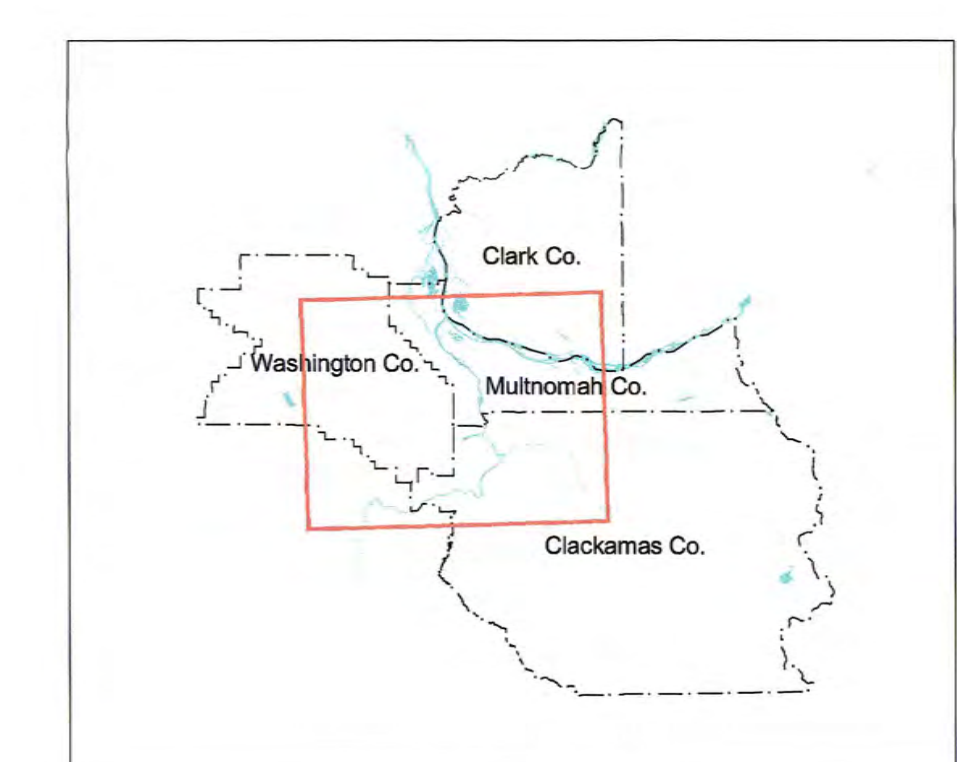
Exhibit D
Regionally Significant Wildlife Habitat
Resolution 02-3177A

- Metro Fish and Wildlife Study Area
- Urban growth boundary
- Metro boundary
- Rivers & Water Bodies
- Surface Streams
- Site Boundaries
- Site Sub Boundaries

SOURCES:
TAX LOT MAP
County Assessment and Taxation offices, 2001. Data collection scale is 1"=100' in urban areas and 1"=200' or 1"=400' in rural areas. Horizontal accuracy is plus or minus five feet or better in Beaverton, Milwaukie, Oregon City, Tigard and Multnomah County. Other areas are plus or minus ten feet.
The information on this map was derived from digital databases on Metro's GIS. Care was taken in the creation of this map. Metro cannot accept any responsibility for errors, omissions, or positional accuracy. There are no warranties, expressed or implied, including the warranty of merchantability or fitness for a particular purpose, accompanying this product. However, notification of any errors will be appreciated.



0 0.5 1 Miles



Location Map

080802c-27

TO: METRO COUNCIL FROM: PLANNING DEPARTMENT DATED: 8/1/2002 DRAFT
OVERSIZED MAP: POTENTIAL WILDLIFE HABITAT, REGIONALLY SIGNIFICANT
WILDLIFE HABITAT EXHIBIT D TO RESOLUTION No. 02-3177A ADOPTED BY
METRO COUNCIL 8/8/02