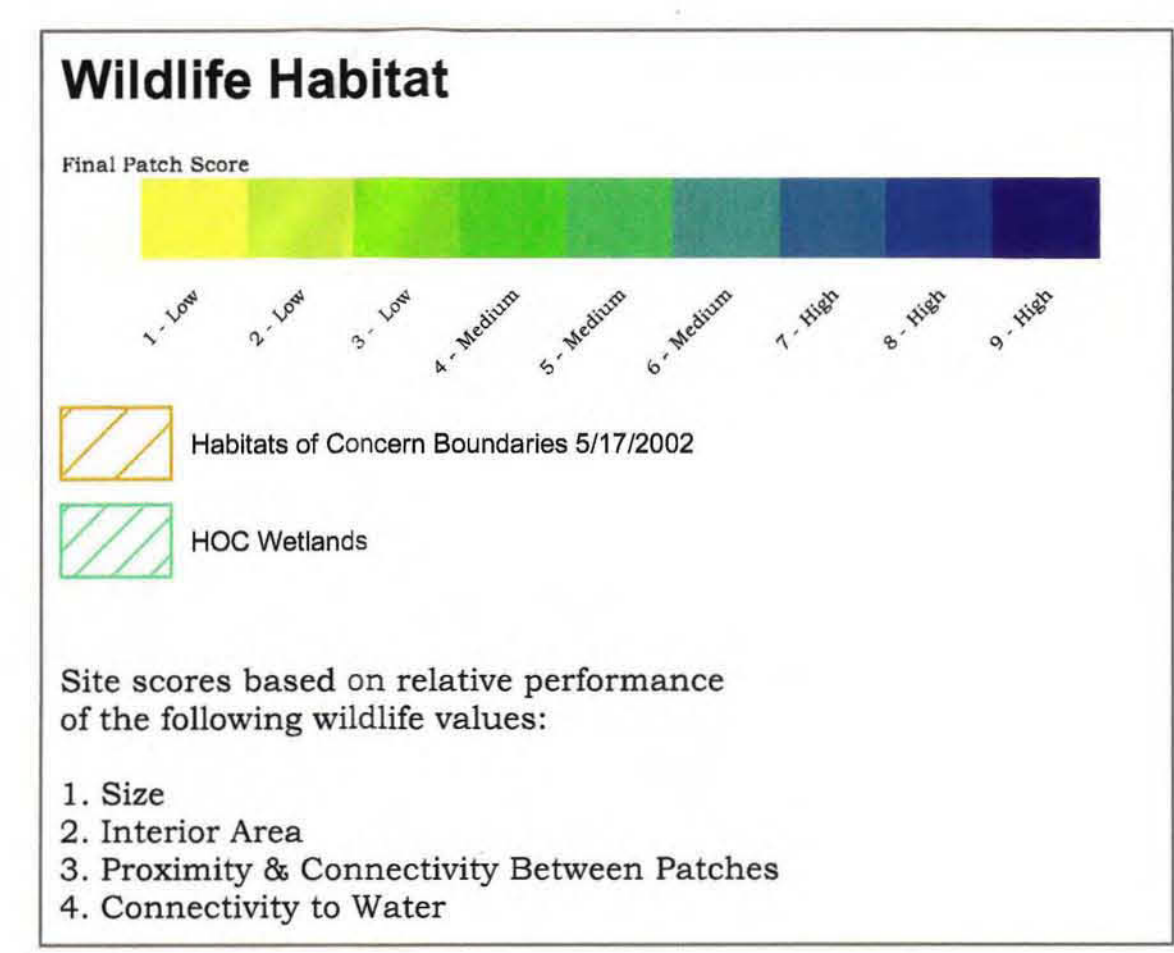


Sauvie Island & Vancouver Quads (1 of 10)

Potential Wildlife Habitat By Total Wildlife Value Score

Wildlife value scores and habitats of concern are based on the criteria matrix attached to proposed Council Resolution 02-3177.

4/17/2002
Decision Draft



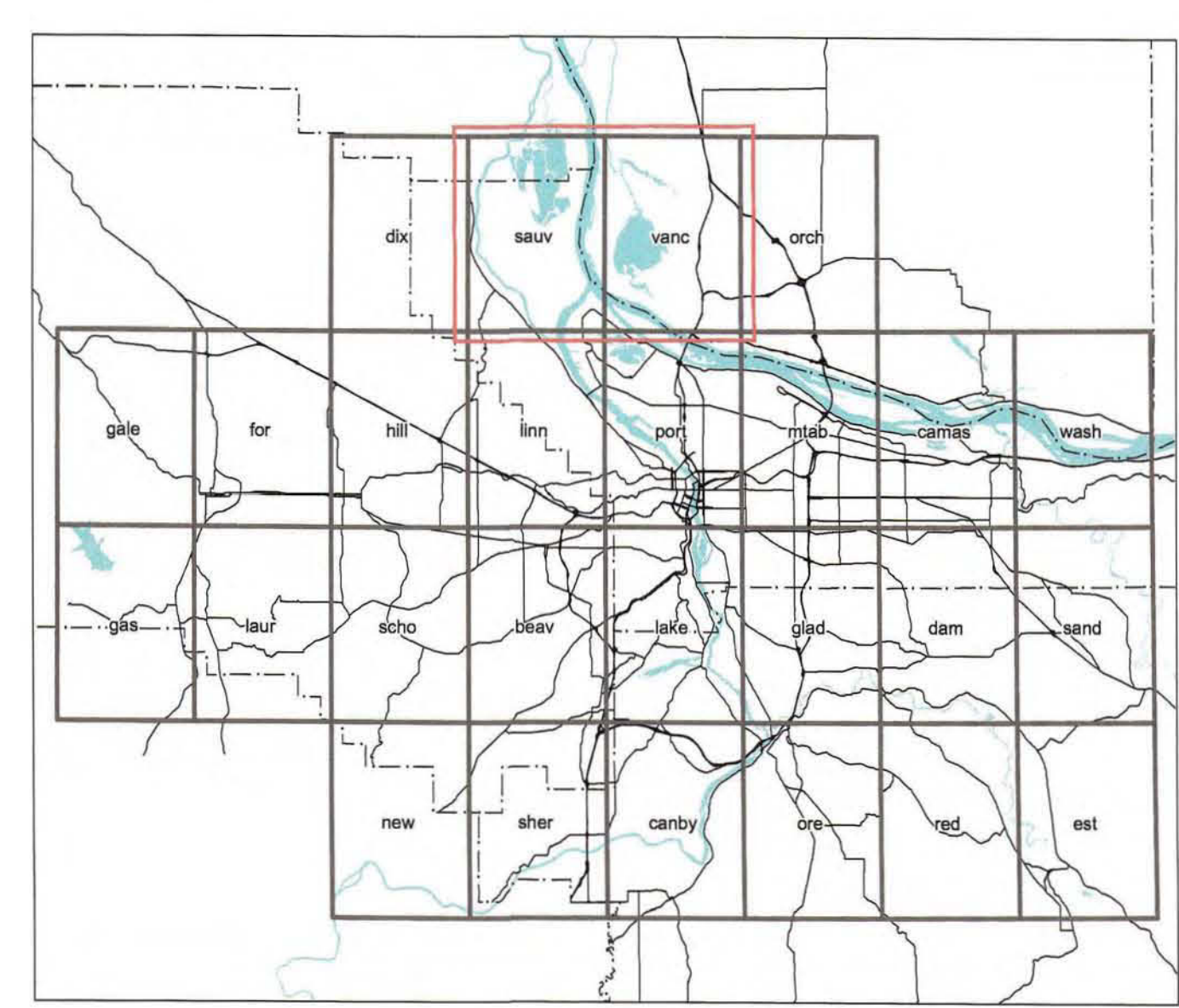
- Area Outside Metro Jurisdiction
- River & Lake Areas
- Metro UGB
- Metro Boundary
- County Boundaries
- Section Lines
- Site Boundaries
- Site Sub Boundaries
- Alternative Analysis Study Area Boundaries
- Fish & Wildlife Study Area Boundary
- Stream Centerlines



METRO DATA RESOURCE CENTER
600 NORTHEAST GRAND AVENUE PORTLAND, OREGON 97232-2736
TEL: (503) 797-1742 FAX: (503) 797-1009
dro@metro.dst.or.us www.metro-region.org



1 inch equals 0.38 miles
0 0.5 Miles



The information on this map was derived from digital databases on Metro's GIS. Care was taken in the creation of this map. Metro neither warrants nor assumes any responsibility for errors, omissions, or positional accuracy. There are no warranties, expressed or implied, including the accuracy of measurements or those for a particular purpose, accompanying this product. However, notification of any errors will be appreciated.

SOURCES:
TAX LOT MAP: County Assessment and Taxation Office, 2001. Data collection scale is 1"=100' in urban areas and 1"=500' in rural areas. Horizontal accuracy is 1/2 inch or better. Vertical accuracy is 1/2 inch or better. In Seaside, Milwaukie, Oregon City, Tualatin and Multnomah County. Other areas are not shown.

080802c-29

TO: METRO COUNCIL FROM: PLANNING DEPARTMENT DATED: 4/17/2002
DECISION DRAFT OVERSIZED MAP: SAUVIE ISLAND AND VANCOUVER QUADS (1
OF 10) POTENTIAL WILDLIFE HABITAT BY TOTAL WILDLIFE VALUE SCORE,
SUPPORTING DOCUMENT TO EXHIBIT D OF RESOLUTION NO. 02-3177A ADOPTED
BY THE METRO COUNCIL 8/8/02



Sauvie Island & Vancouver Quads (1 of 10)

Regionally Significant Riparian Corridors By Total Functional Score

Functional Scores based on Matrix Specified in Exhibit A, Appendix A of Council Resolution 01-3141c

4/17/2002

Riparian Corridor

Total Riparian Score >= 6 (Primary)

Total Riparian Score < 6 (All Secondary)

Site scores based on relative performance of the following Riparian functions:

1. Microclimate and Shade
2. Streamflow Moderation and Water Storage
3. Bank Stabilization, Sediment and Pollution Control
4. Large Wood and Channel Dynamics
5. Organic Material Sources

- Area Outside Metro Jurisdiction
- River & Lake Areas
- Metro UGB
- Metro Boundary
- County Boundaries
- City Boundaries
- Section Lines
- MFW Study Area Boundary
- Site Boundaries
- Site Sub Boundaries
- Alternative Analysis Study Area Boundaries
- Taxlots
- Stream Centerlines

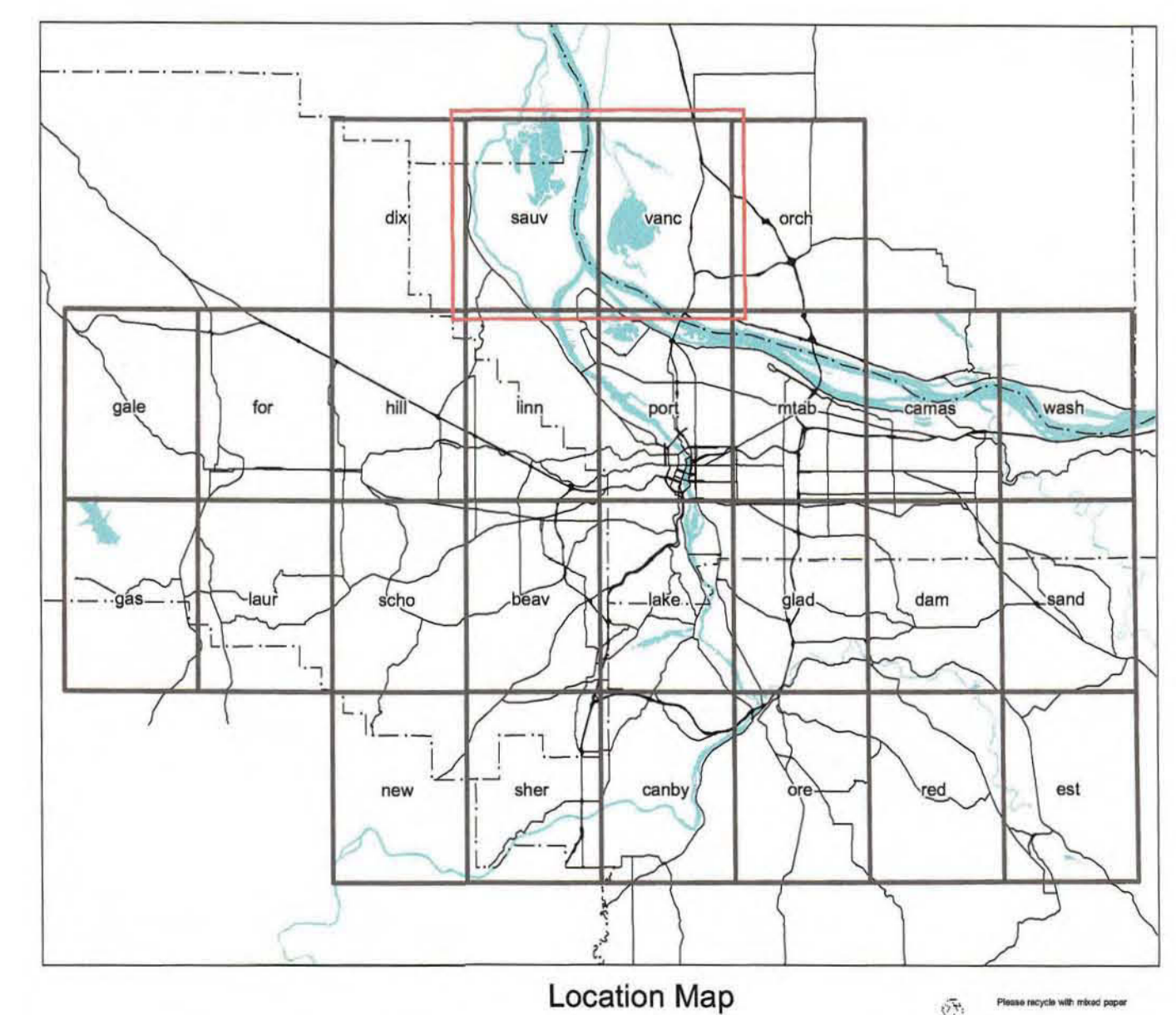
The information on this map was derived from digital databases on Metro's GIS. Care was taken in the creation of this map. Metro cannot accept any responsibility for errors, omissions, or positional accuracy. There are no warranties, expressed or implied, including the warranty of non-infringement or fitness for a particular purpose, accompanying this product. However, notification of any errors will be appreciated.

SOURCES:
TAX LOT MAP: County Assessment and Taxation Office, 2001. Data collection scale is 1"=100' in plan.
METRO URBAN GROWTH BOUNDARY: Metro, 2002. Data collection scale is 1"=100' in plan.
COUNTY BOUNDARIES: Oregon State Department of Geology, 2001. Data collection scale is 1"=100' in plan.
CITY BOUNDARIES: Various sources, including the City of Portland, Clatsop County, Tillamook County, and Multnomah County. Data collection scale is 1"=100' in plan.



METRO DATA RESOURCE CENTER
600 NORTHEAST GRAND AVENUE PORTLAND, OREGON 97232-2736
TEL (503) 797-1742 FAX (503) 797-1909
dro@metro.dst.or.us www.metro-region.org

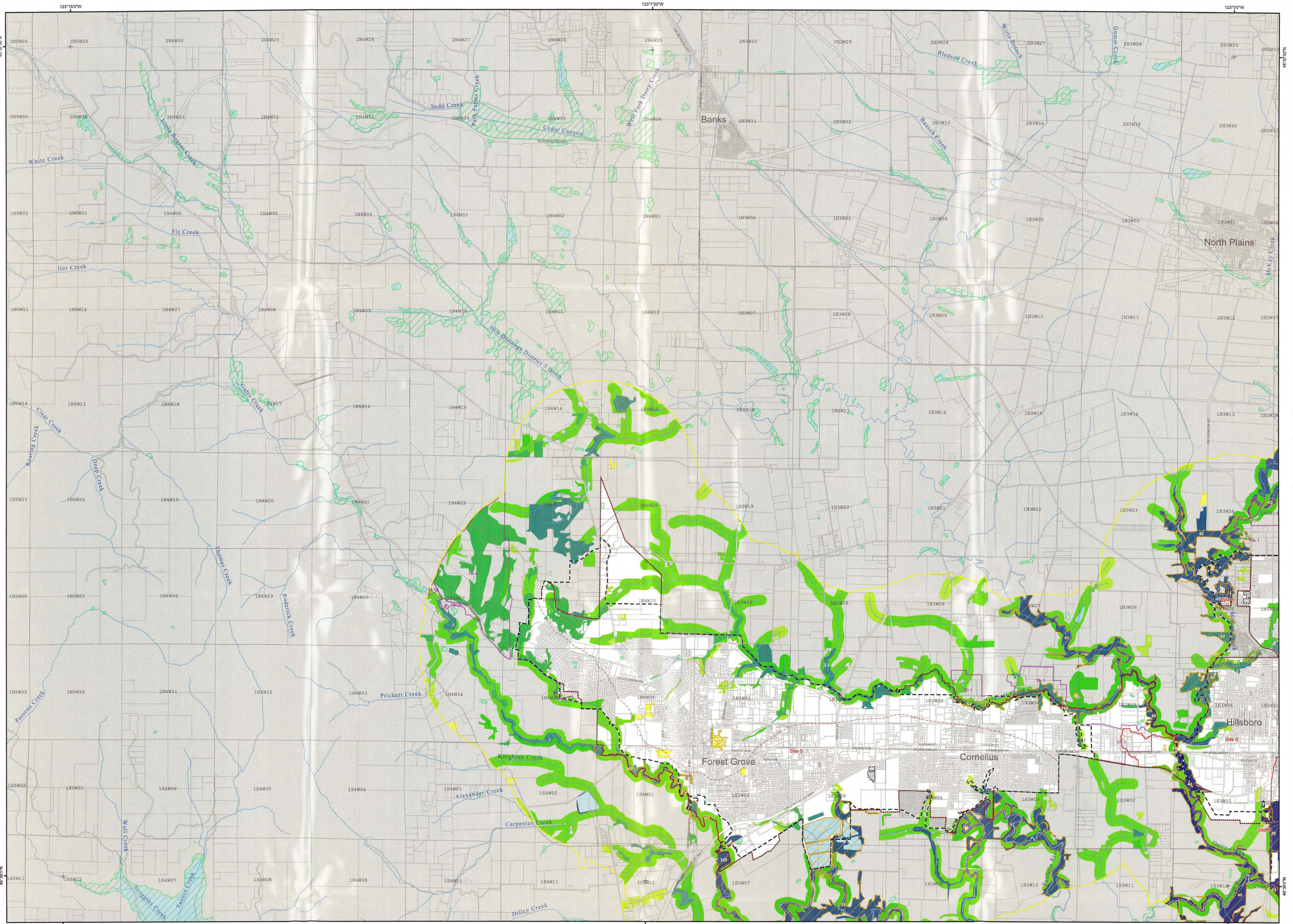
1 inch equals 0.38 miles
0 0.5 Miles



Location Map

080802c-30

TO: METRO COUNCIL FROM: PLANNING DEPARTMENT DATED: 4/17/2002
OVERSIZED MAP: SAUVIE ISLAND AND VANCOUVER QUADS (1 OF 10)
REGIONALLY SIGNIFICANT RIPARIAN CORRIDORS BY TOTAL FUNCTIONAL
SCORE, SUPPORTING DOCUMENT TO EXHIBIT A OF RESOLUTION NO. 02-3176
ADOPTED BY THE METRO COUNCIL 8/8/02

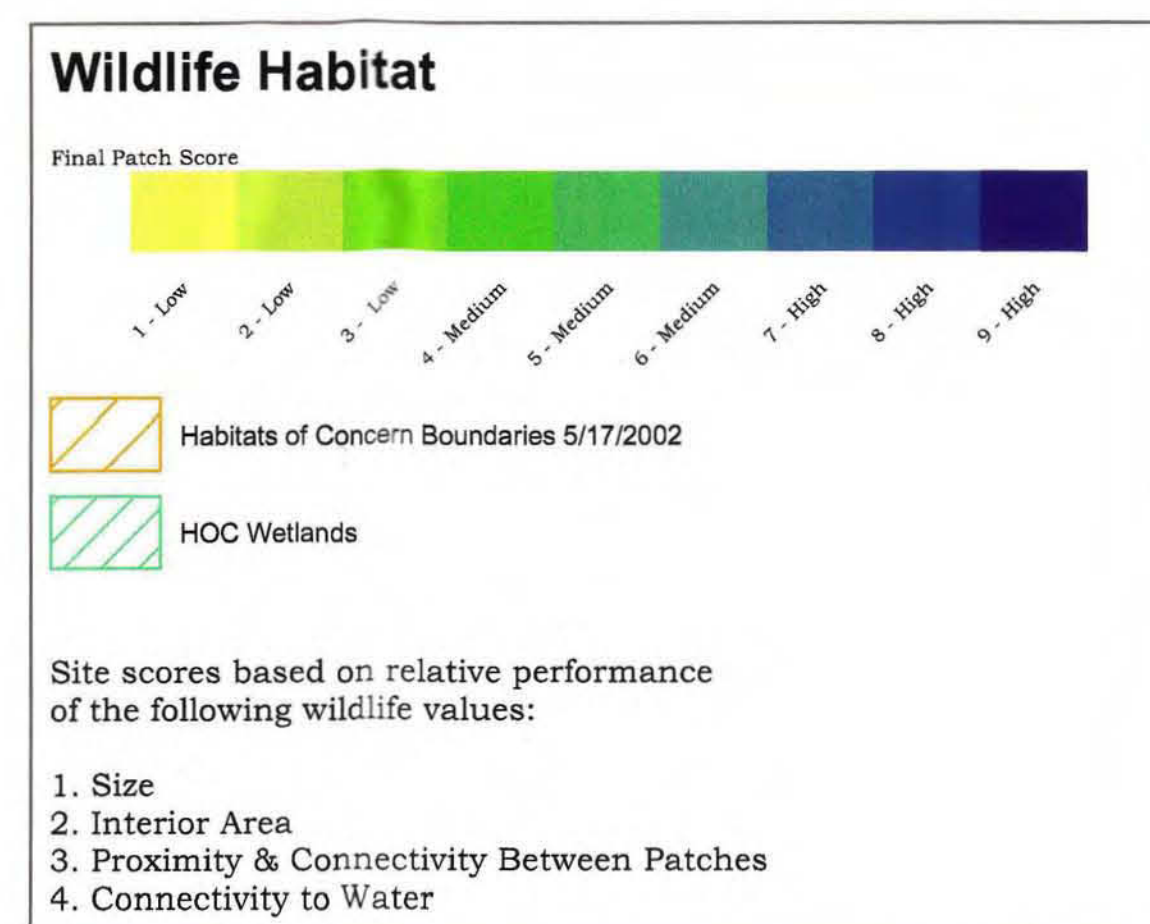


Gales Creek & Forest Grove Quads (2 of 10)

Potential Wildlife Habitat By Total Wildlife Value Score

Wildlife value scores and habitats of concern are based on the criteria matrix attached to proposed Council Resolution 02-3177.

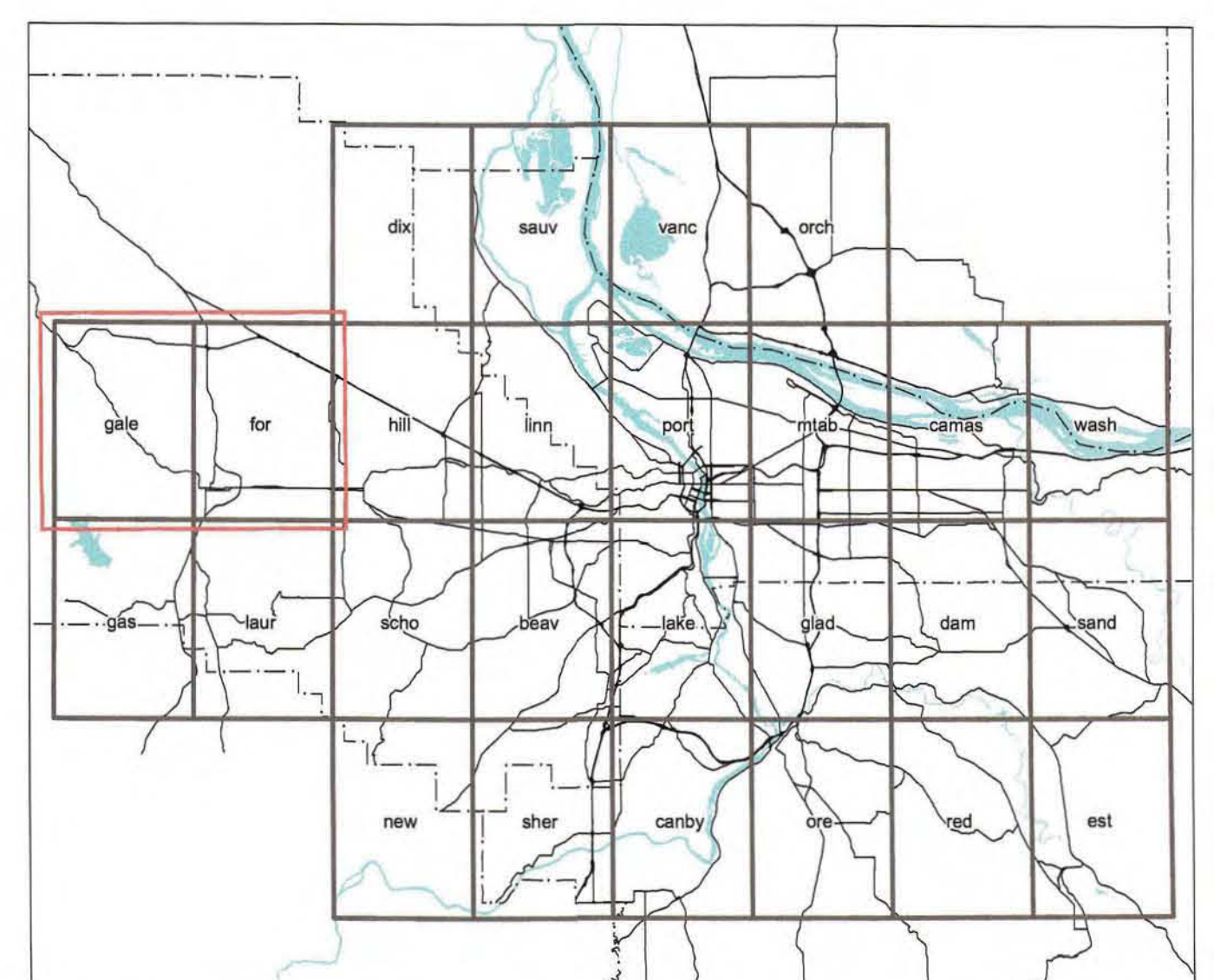
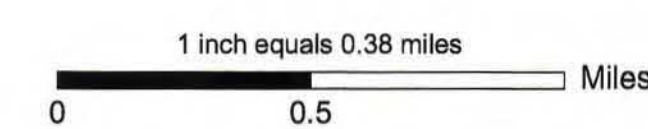
4/17/2002
Decision Draft



- Area Outside Metro Jurisdiction
- River & Lake Areas
- Metro UGB
- Metro Boundary
- County Boundaries
- Section Lines
- Site Boundaries
- Site Sub Boundaries
- Alternative Analysis Study Area Boundaries
- Fish & Wildlife Study Area Boundary
- Stream Centerlines



METRO DATA RESOURCE CENTER
600 NORTHEAST GRAND AVENUE | PORTLAND, OREGON 97232-2736
TEL (503) 797-1742 FAX (503) 797-1909
drc@metro.ost.or.us www.metro-region.org



Location Map

The information on this map was derived from digital databases on Metro's GIS. Metro cannot accept any responsibility for errors, omissions, or outdated information. There are no warranties, expressed or implied, including the accuracy of measurements or fitness for a particular purpose, accompanying this product. However, notification of any errors will be appreciated.

SOURCES:
TAX LOT MAP
County Assessment and Taxation Office, 2001. Data collection scale is 1"=100' in urban areas and 1"=200' in rural areas. Horizontal accuracy is plus or minus five feet or better in Galesburg, Hillsboro, Clatsop City, Tigard and Multnomah County. Other areas are plus or minus ten feet.

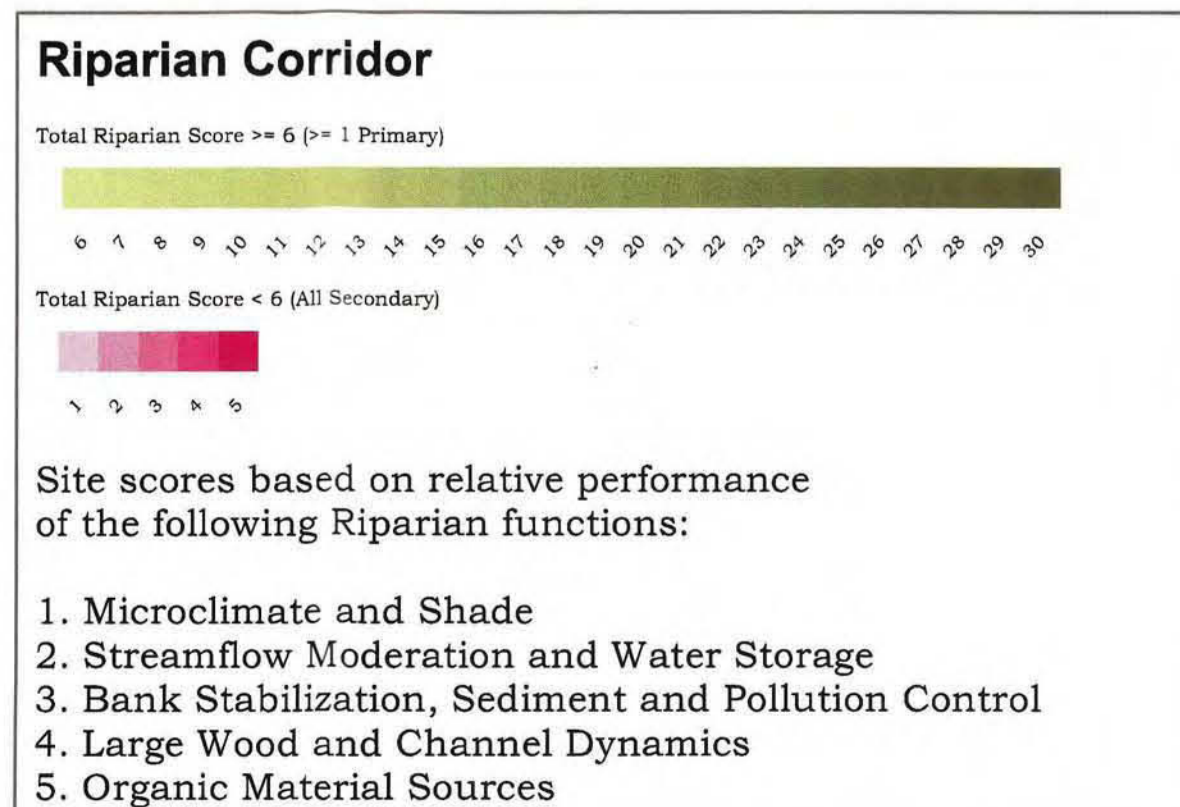
080802c-31

TO: METRO COUNCIL FROM: PLANNING DEPARTMENT DATED: 4/17/2002
DECISION DRAFT OVERSIZED MAP: GALES CREEK AND FOREST GROVE QUADS
OF 10) POTENTIAL WILDLIFE HABITAT BY TOTAL WILDLIFE VALUE SCORE,
SUPPORTING DOCUMENT TO EXHIBIT D OF RESOLUTION NO. 02-3177A ADOPTED
BY THE METRO COUNCIL 8/8/02



Gales Creek & Forest Grove Quads (2 of 10)

Regionally Significant Riparian Corridors By Total Functional Score



Functional Scores based on Matrix Specified in Exhibit A, Appendix A of Council Resolution 01-3141c

4/17/2002

- Area Outside Metro Jurisdiction
- River & Lake Areas
- Metro UGB
- Metro Boundary
- County Boundaries
- City Boundaries
- Section Lines
- MFW Study Area Boundary
- Site Boundaries
- Site Sub Boundaries
- Alternative Analysis Study Area Boundaries
- Taxlots
- Stream Centerlines

The information on this map was derived from digital databases on Metro's GIS. Care was taken in the creation of this map. Metro cannot accept any responsibility for errors, omissions, or positional accuracy. There are no warranties, expressed or implied, regarding the accuracy of the information presented for a particular purpose. Accuracy of the information is not guaranteed. However, rectification of any errors will be applicable.

SOURCE:
TAX LOT MAP
County Assessment and Taxation Office, 2007. Date collection scale is 1"=100' in urban areas and 1"=200' or 1"=300' in rural areas. Horizontal accuracy is plus or minus five feet or better in urban areas, five to ten feet in rural areas. Other areas are plus or minus ten feet.

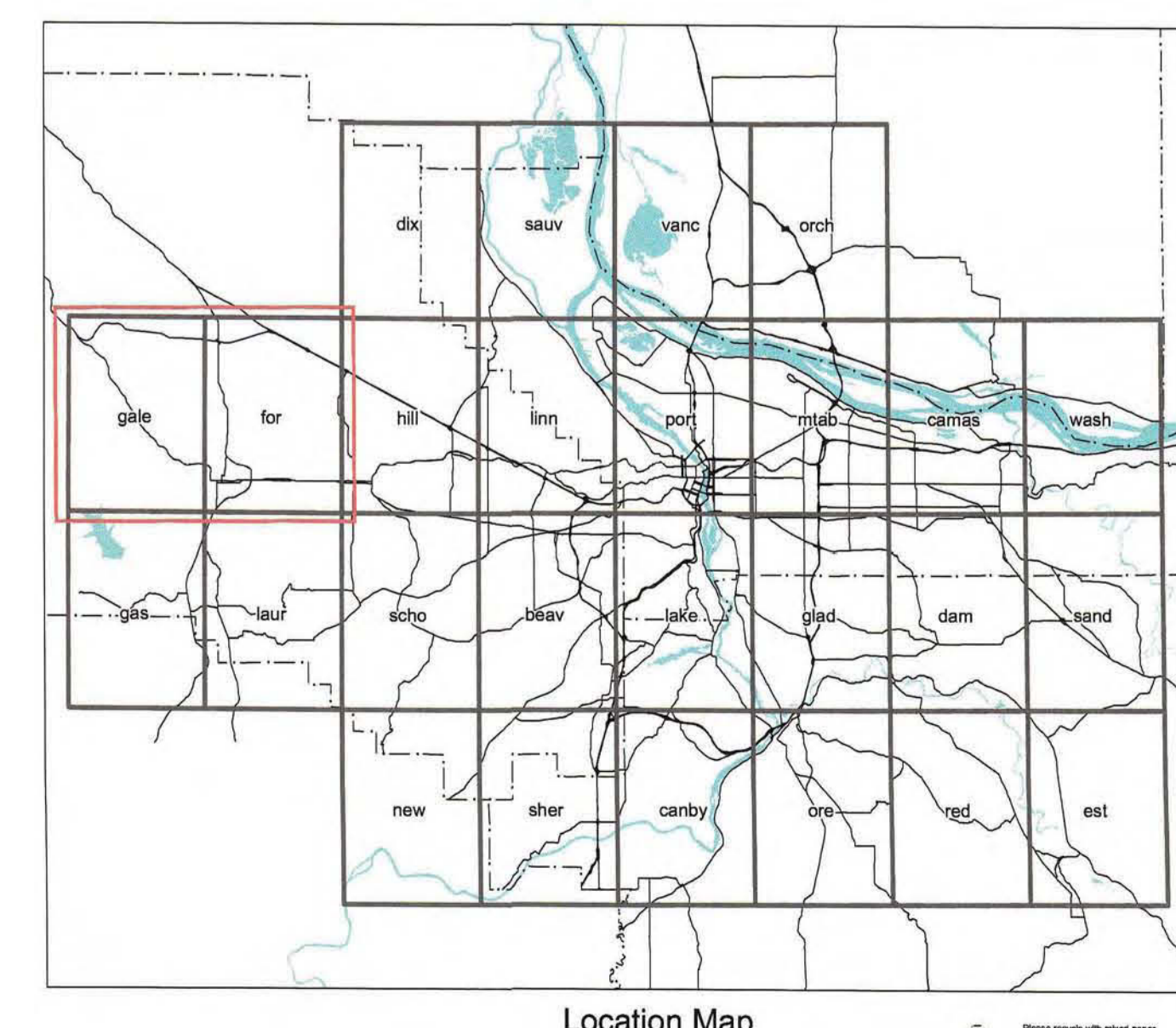


METRO

METRO DATA RESOURCE CENTER
600 NORTHEAST GRAND AVENUE | PORTLAND, OREGON 97232-2736
TEL (503) 797-1742 FAX (503) 797-1909
dro@metro.dst.or.us www.metro-region.org



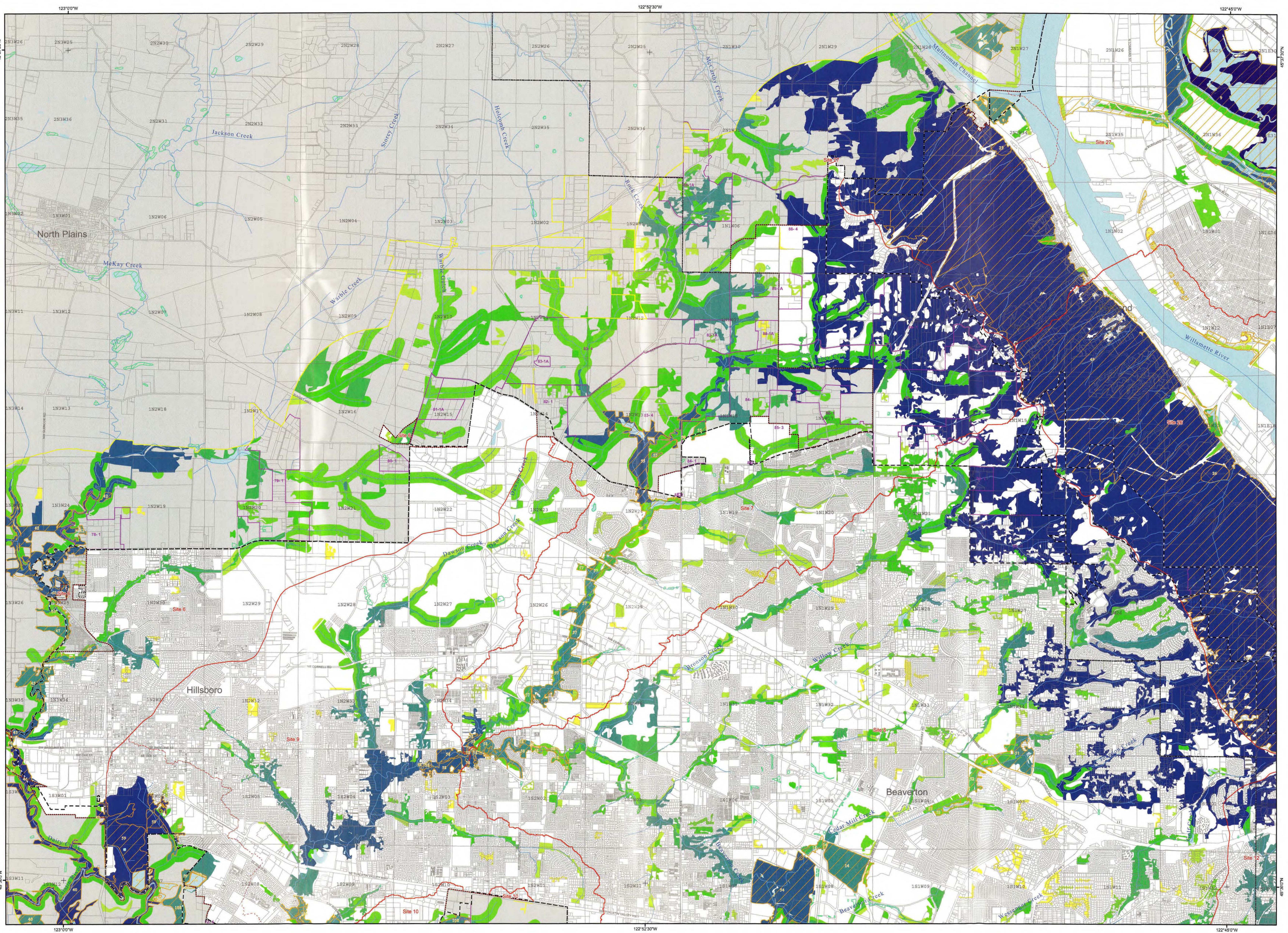
1 inch equals 0.38 miles
0 0.5 Miles



Location Map

080802c-32

TO: METRO COUNCIL FROM: PLANNING DEPARTMENT DATED: 4/17/2002
OVERSIZED MAP: GALES CREEK AND FOREST GROVE QUADS (2 OF 10)
REGIONALLY SIGNIFICANT RIPARIAN CORRIDORS BY TOTAL FUNCTIONAL
SCORE, SUPPORTING DOCUMENT TO EXHIBIT A OF RESOLUTION No. 02-3176
ADOPTED BY THE METRO COUNCIL 8/8/02



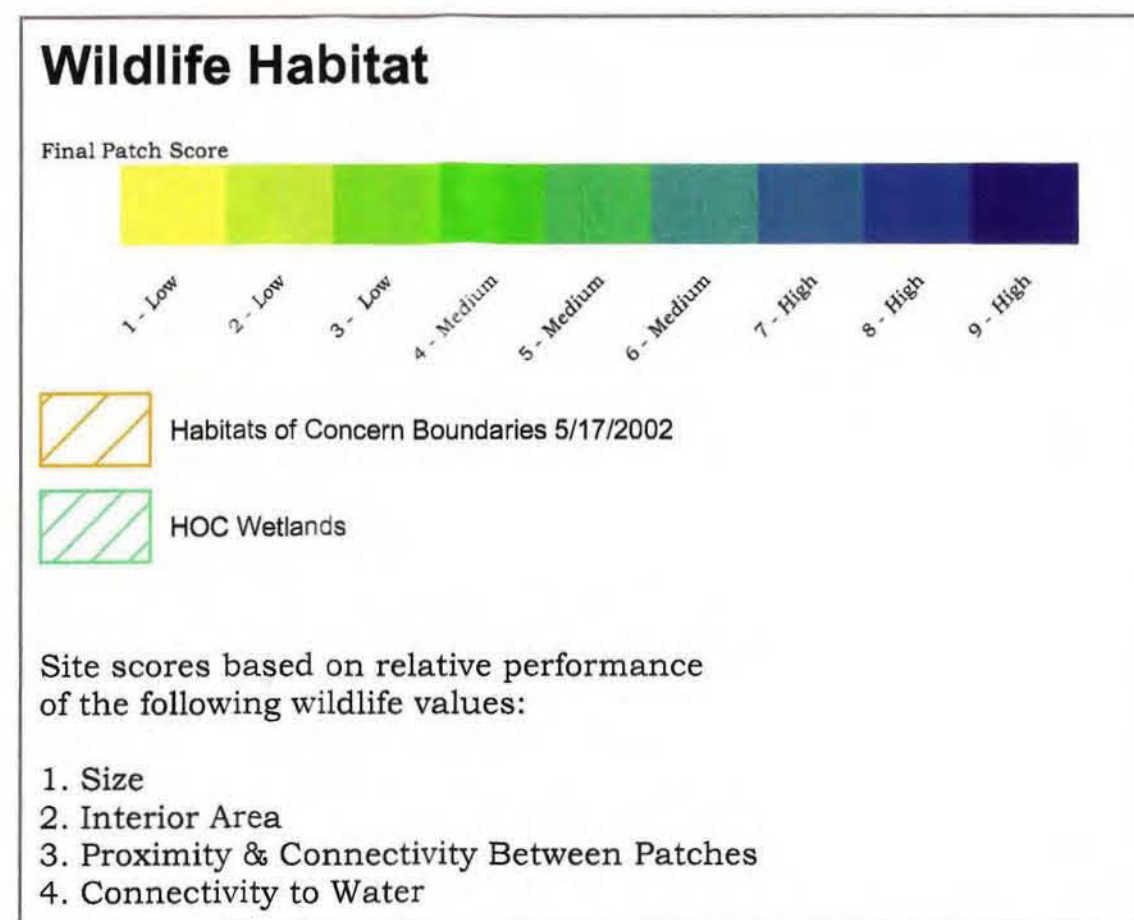
Hillsboro & Linnton Quads (3 of 10)

Potential Wildlife Habitat

By Total Wildlife Value Score

Wildlife value scores and habitats of concern are based on the criteria matrix attached to proposed Council Resolution 02-3177.

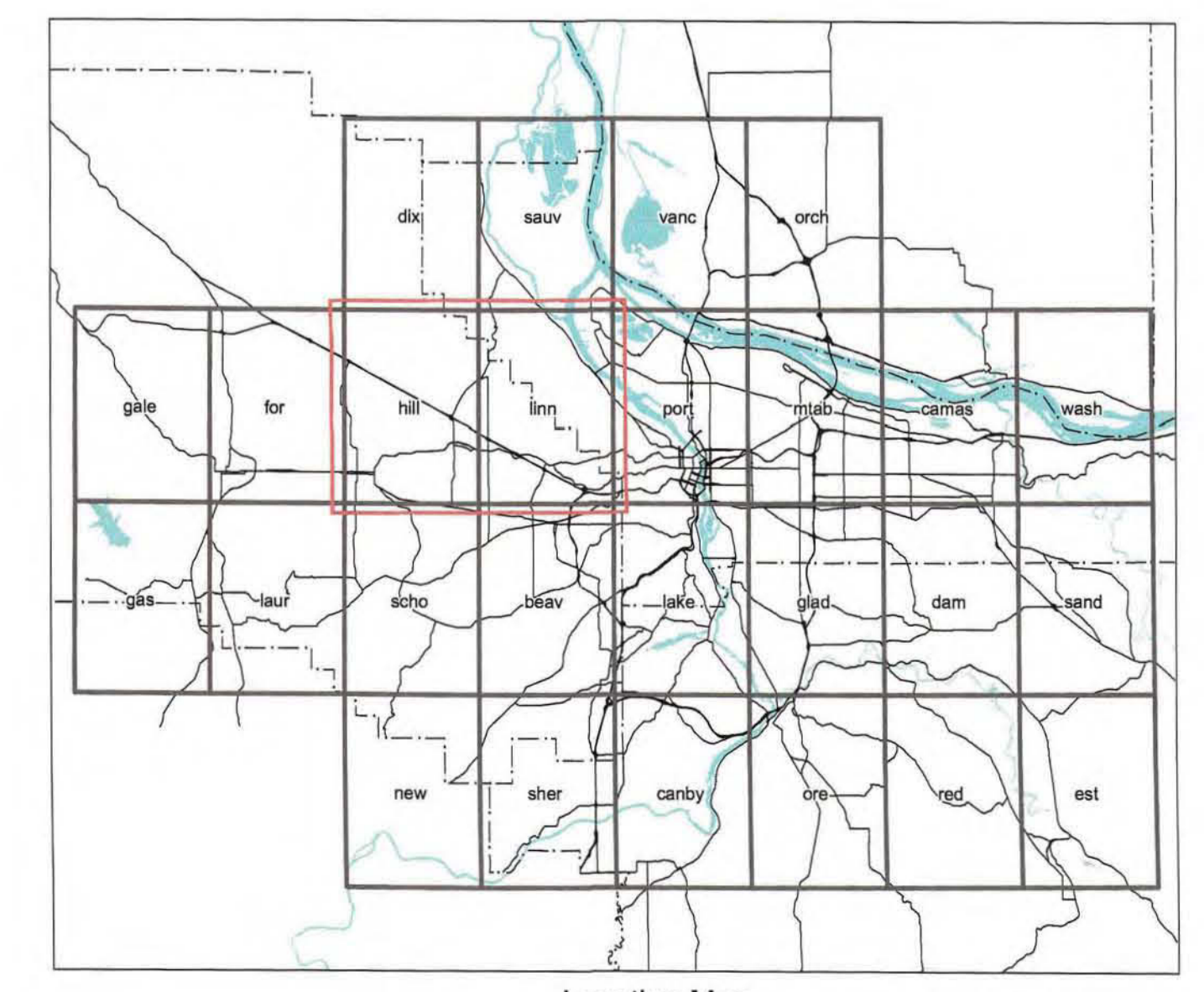
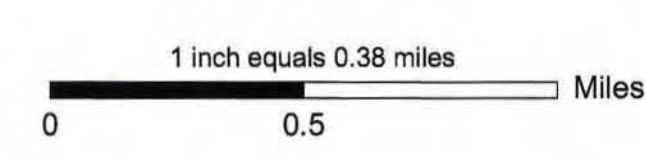
4/17/2002
Decision Draft



- Area Outside Metro Jurisdiction
- River & Lake Areas
- Metro UGB
- Metro Boundary
- County Boundaries
- Section Lines
- Site Boundaries
- Site Sub Boundaries
- Alternative Analysis Study Area Boundaries
- Fish & Wildlife Study Area Boundary
- Stream Centerlines



METRO DATA RESOURCE CENTER
600 NORTHEAST GRAND AVENUE PORTLAND, OREGON 97232-2736
TEL (503) 797-1742 FAX (503) 797-1909
dro@metro.dst.or.us www.metro-region.org

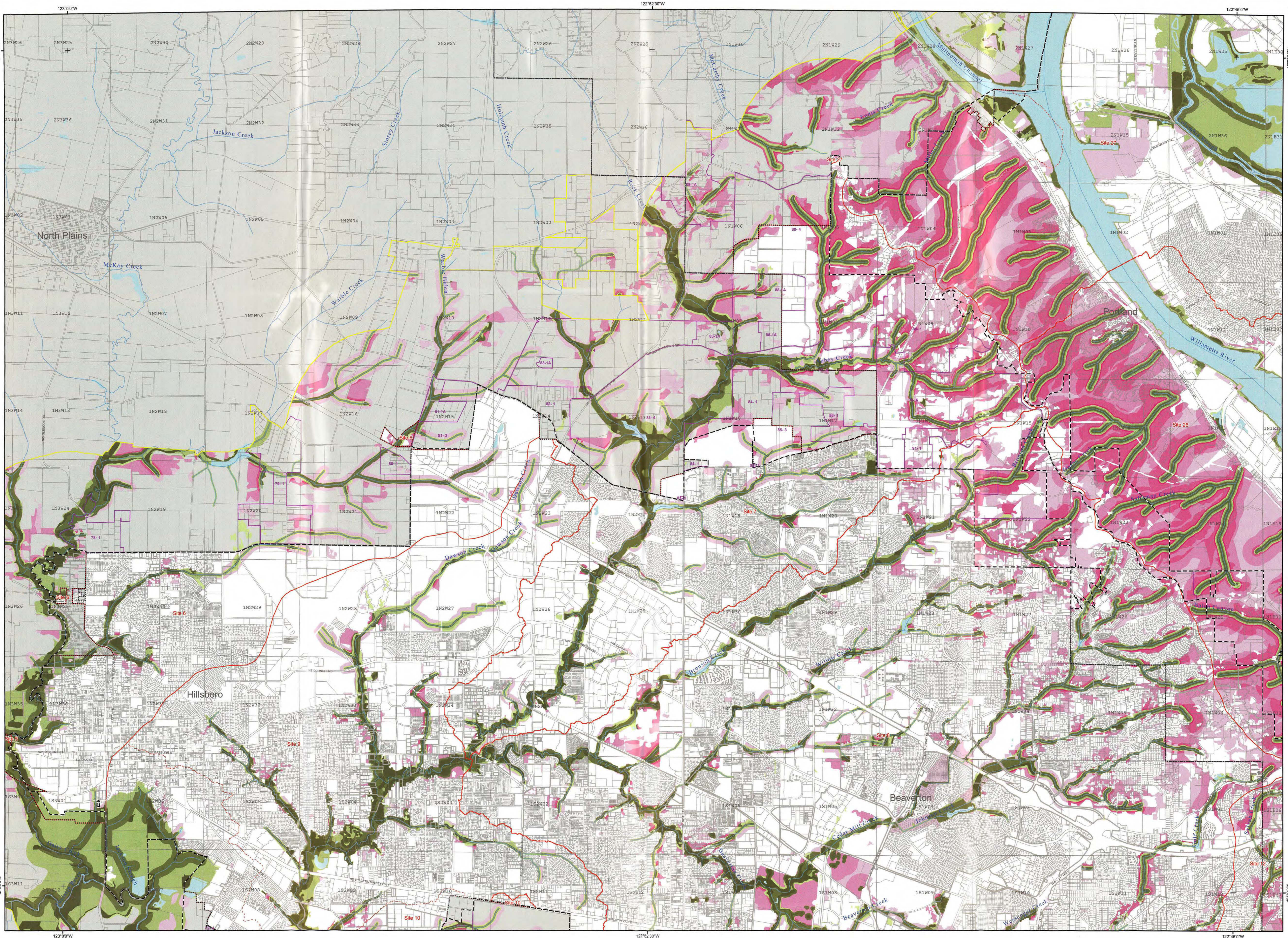


The information on this map was derived from digital databases on Metro's GIS. Care was taken in the creation of this map. Metro cannot accept any responsibility for errors, omissions, or graphical distortions. There are no warranties, expressed or implied, including the accuracy or completeness of these data for a particular purpose. Accuracy of this product, however, reduction of any errors will be appreciated.

SOURCES:
TAX LOT MAP
County Assessment and Taxation Office, 2001. Data collection date is 11/1/01 in urban areas and 11/20/01 in rural areas. "Original" means a plot or group of the field or other boundaries, including Oregon City, Tigard and Multnomah County. Other areas are plot or rural lot feet.

080802c-33

TO: METRO COUNCIL FROM: PLANNING DEPARTMENT DATED: 4/17/2002
DECISION DRAFT OVERSIZED MAP: HILLSBORO AND LINNTON QUADS (3 OF 10)
POTENTIAL WILDLIFE HABITAT BY TOTAL WILDLIFE VALUE SCORE, SUPPORTING
DOCUMENT TO EXHIBIT D OF RESOLUTION NO. 02-3177A ADOPTED BY THE
METRO COUNCIL 8/8/02



Hillsboro & Linnton Quads (3 of 10)

Regionally Significant Riparian Corridors By Total Functional Score

Riparian Corridor

Total Riparian Score ≥ 6 (n=1 Primary)

Total Riparian Score < 6 (All Secondary)

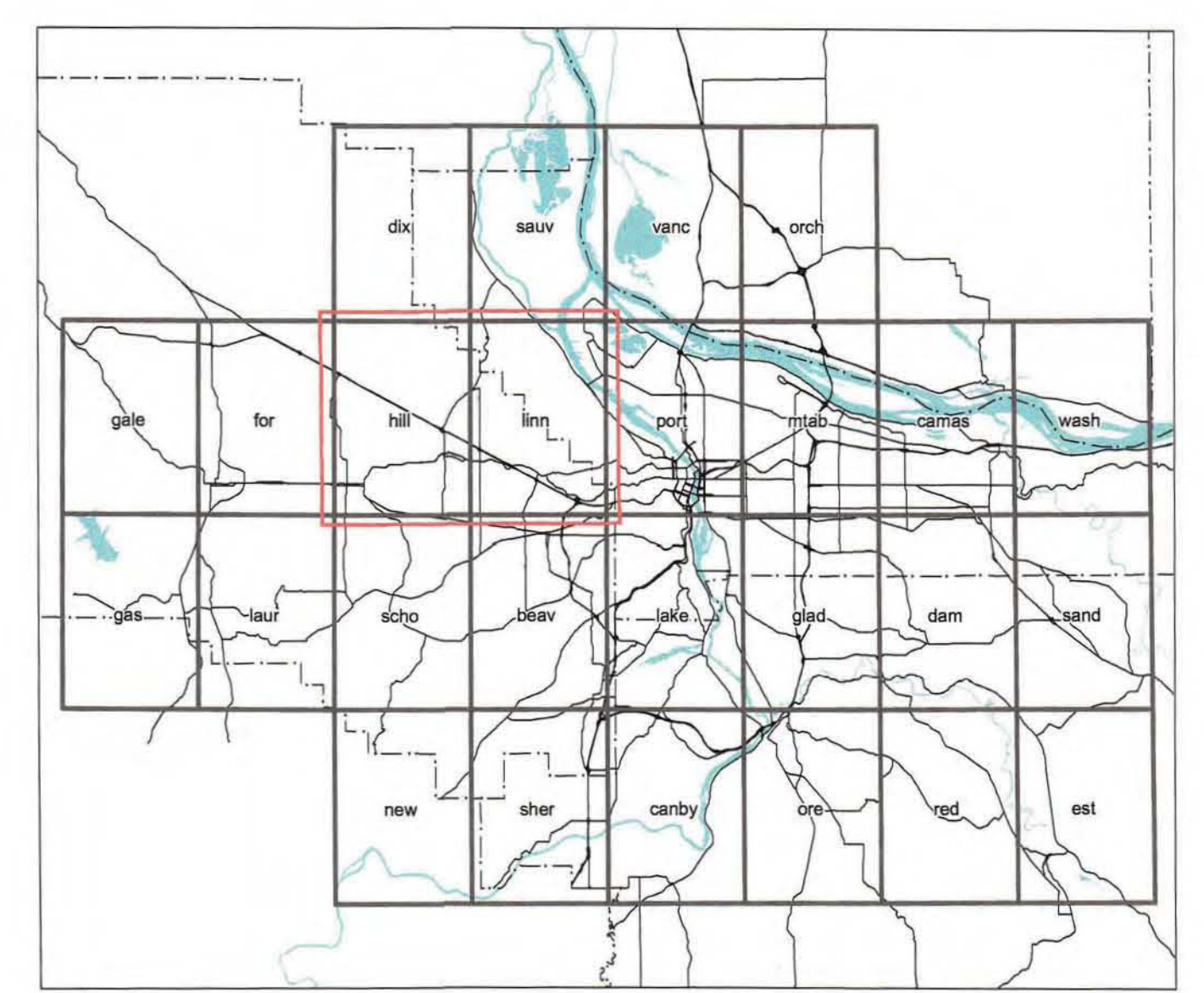
Site scores based on relative performance of the following Riparian functions:

1. Microclimate and Shade
2. Streamflow Moderation and Water Storage
3. Bank Stabilization, Sediment and Pollution Control
4. Large Wood and Channel Dynamics
5. Organic Material Sources

- Area Outside Metro Jurisdiction
- River & Lake Areas
- Metro UGB
- Metro Boundary
- County Boundaries
- City Boundaries
- Section Lines
- MFW Study Area Boundary
- Site Area
- Site Sub Boundaries
- Alternative Analysis Study Area Boundaries
- Taxlots
- Stream Centerlines



METRO DATA RESOURCE CENTER
 600 NORTHEAST GRAND AVENUE PORTLAND, OREGON 97232-2736
 TEL (503) 797-1742 FAX (503) 797-1909
 dro@metro.dst.or.us www.metro-region.org



4/17/2002

The information on this map was derived from digital databases on Metro's GIS. Care was taken in the creation of this map. Metro cannot accept any responsibility for errors, omissions, or outdated accuracy. There are no warranties, expressed or implied, including the accuracy of measurements or lines for particular situations accompanying this product. However, notification of any errors will be appreciated.

SOURCES:
 TAX LOT MAP:
 Council Assessment and Taxation Office, 2001. Data collection scale is 1"=100' in urban areas and 1"=200' or 1"=400' in rural areas. Horizontal accuracy is plus or minus one foot or better in Beaverton, Hillsboro, Clatsop City, Tigard and Multnomah County. Other areas are plus or minus ten feet.

1 inch equals 0.38 miles
 0 0.5 1 Miles

Location Map

080802c-34

TO: METRO COUNCIL FROM: PLANNING DEPARTMENT DATED: 4/17/2002
OVERSIZED MAP: HILLSBORO AND LINNTON QUADS (3 OF 10) REGIONALLY
SIGNIFICANT RIPARIAN CORRIDORS BY TOTAL FUNCTIONAL SCORE,
SUPPORTING DOCUMENT TO EXHIBIT A OF RESOLUTION No. 02-3176
ADOPTED BY THE METRO COUNCIL 8/8/02