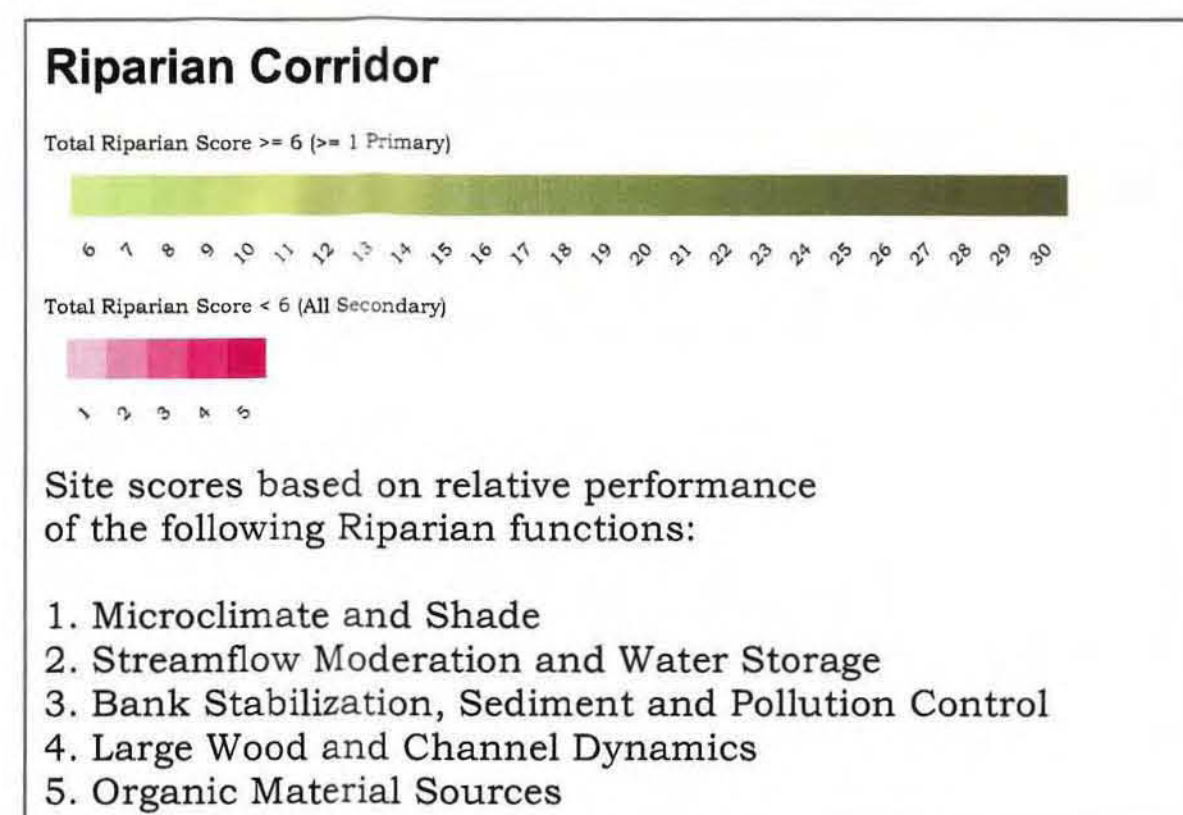


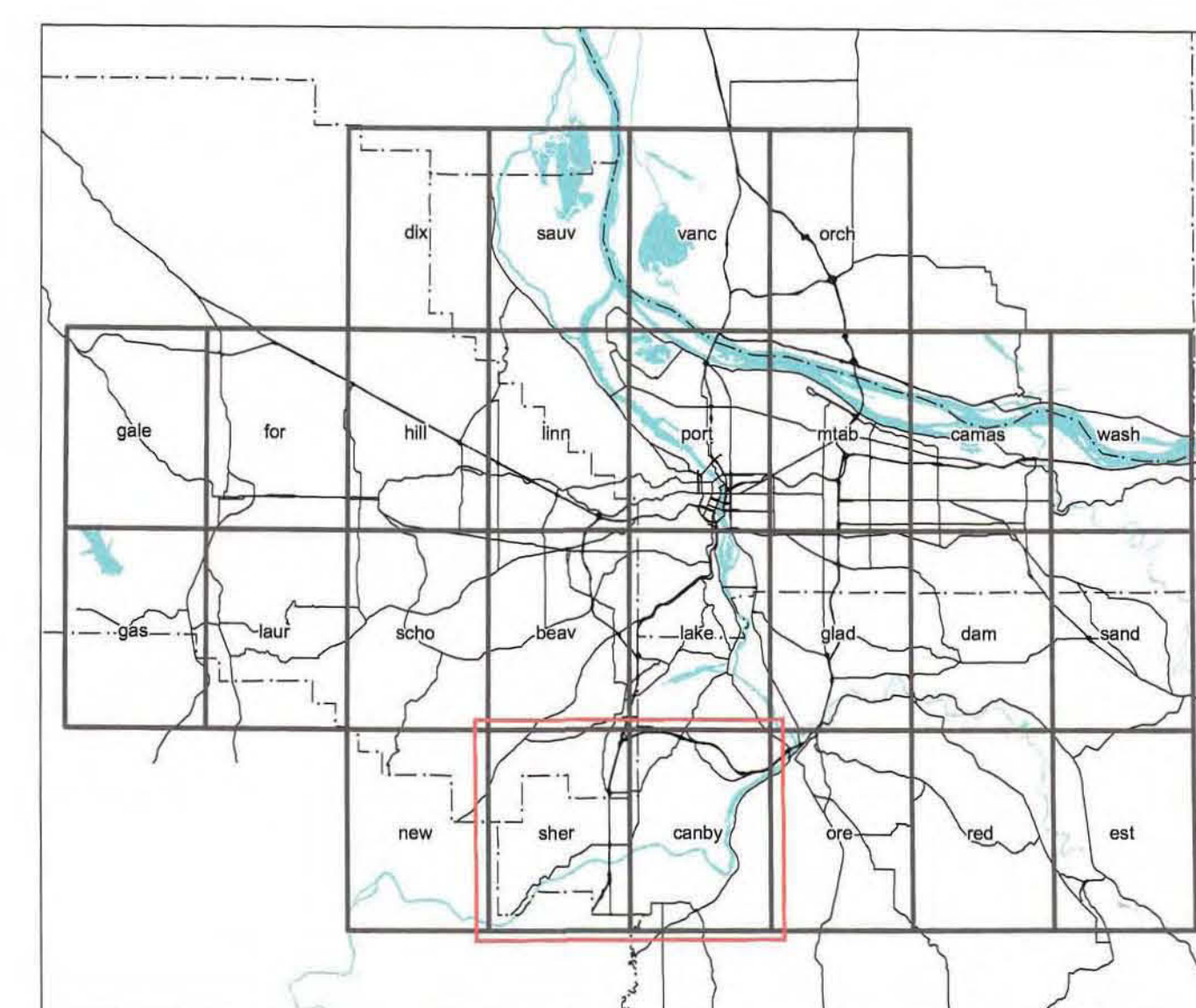
Sherwood & Canby Quads (9 of 10)

Regionally Significant Riparian Corridors By Total Functional Score



METRO DATA RESOURCE CENTER
600 NORTHEAST GRAND AVENUE PORTLAND, OREGON 97232-2736
TEL (503) 797-1742 FAX (503) 797-1999
dro@metro.dst.or.us www.metro-region.org

1 inch equals 0.38 miles
0 0.5 1 Miles



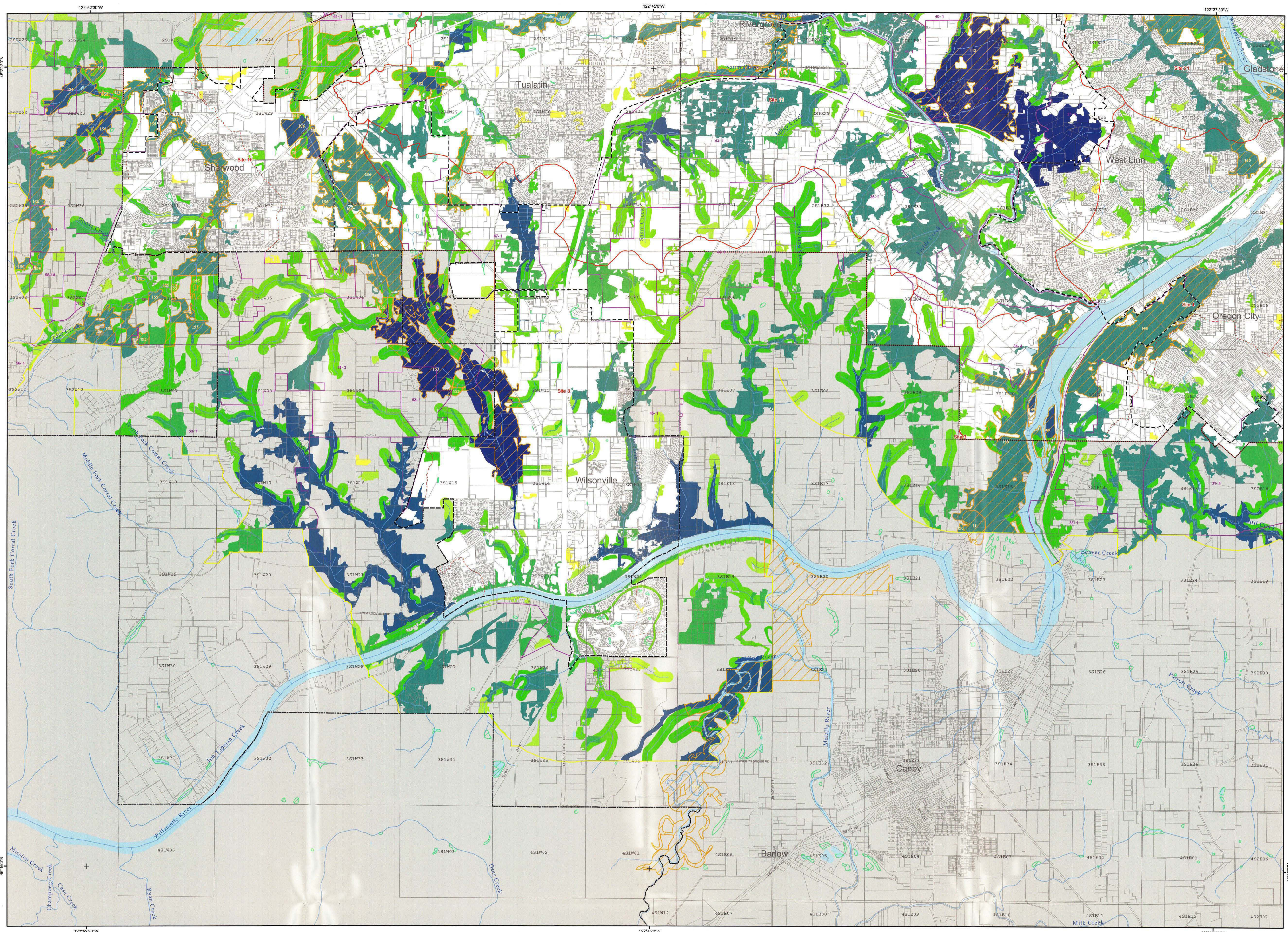
Location Map

Functional Scores based on Matrix Specified in Exhibit A, Appendix A of Council Resolution 01-3141c

4/17/2002

080802c-46

TO: METRO COUNCIL FROM: PLANNING DEPARTMENT DATED: 4/17/2002
OVERSIZED MAP: SHERWOOD & CANBY QUADS (9 OF 10) REGIONALLY
SIGNIFICANT RIPARIAN CORRIDORS BY TOTAL FUNCTIONAL SCORE,
SUPPORTING DOCUMENT TO EXHIBIT A OF RESOLUTION No. 02-3176
ADOPTED BY THE METRO COUNCIL 8/8/02



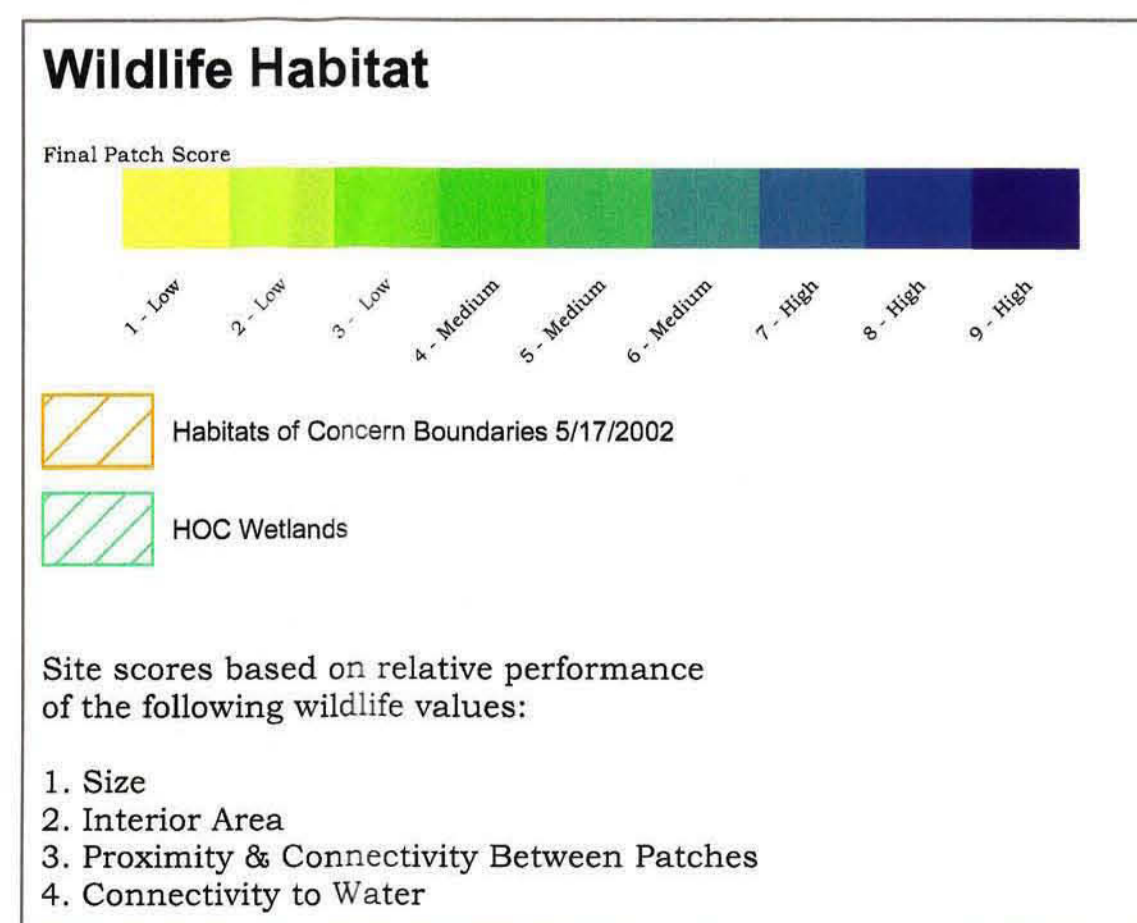
Sherwood & Canby Quads (9 of 10)

Potential Wildlife Habitat

By Total Wildlife Value Score

Wildlife value scores and habitats of concern are based on the criteria matrix attached to proposed Council Resolution 02-3177.

4/17/2002
Decision Draft



- Area Outside Metro Jurisdiction
- River & Lake Areas
- Metro UGB
- Metro Boundary
- County Boundaries
- Section Lines
- Site Boundaries
- Site Sub Boundaries
- Alternative Analysis Study Area Boundaries
- Fish & Wildlife Study Area Boundary
- Stream Centerlines

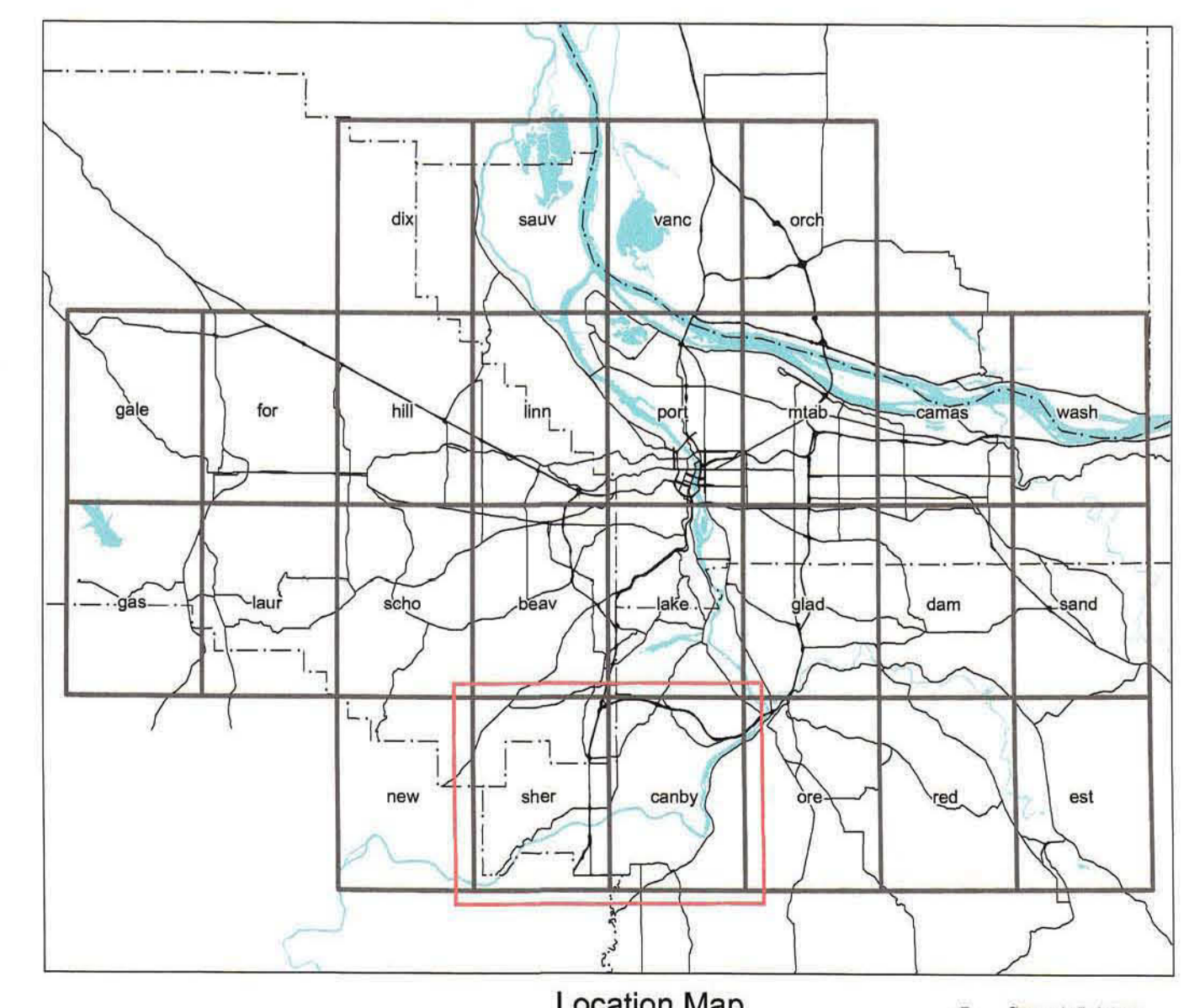
The information on this map was derived from digital databases on Metro's GIS. Care was taken in the creation of this map. Metro cannot accept any responsibility for errors, omissions, or positional accuracy. There are no warranties, expressed or implied, including the warranty of merchantability or fitness for a particular purpose. Metro disclaims any liability for any errors or omissions.

SOURCES:
TAX LOT MAP
County Assessment and Taxation Office, 2001. Data collection scale is 1"=100' in urban areas and 1"=200' or 1"=300' in rural areas. Horizontal accuracy is plus or minus the full width of a meter (approximately 39.37 inches). Oregon City, Tigard and Multnomah County. Other areas are plus or minus ten feet.



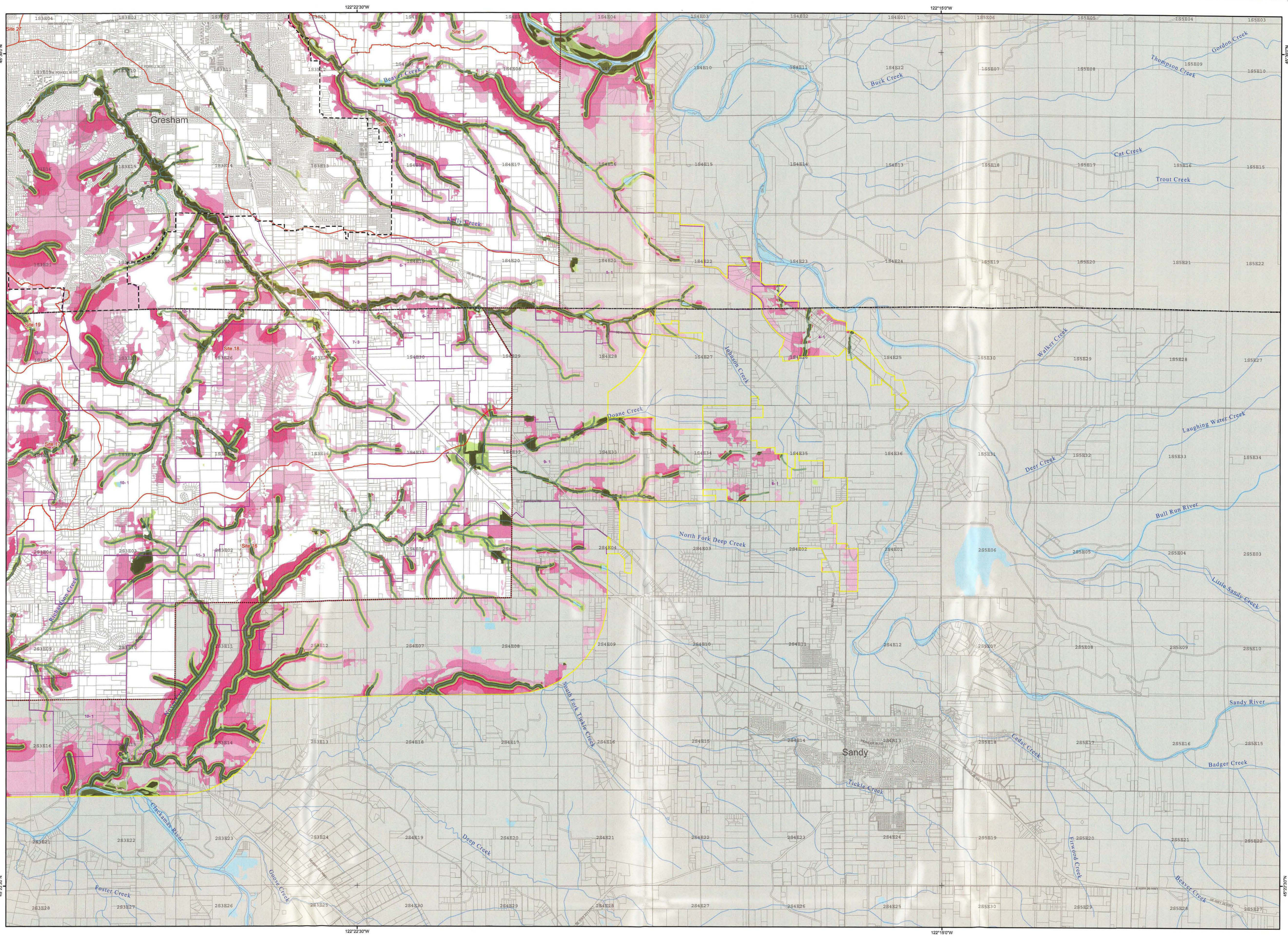
METRO DATA RESOURCE CENTER
600 NORTHEAST GRAND AVENUE PORTLAND, OREGON 97232-2736
TEL (503) 797-1742 FAX (503) 797-1909
drc@metro.dst.or.us www.metro-region.org

1 inch equals 0.39 miles
0 0.5 1 Miles



080802c-45

TO: METRO COUNCIL FROM: PLANNING DEPARTMENT DATED: 4/17/2002
DECISION DRAFT OVERSIZED MAP: SHERWOOD & CANBY QUADS (9 OF 10)
POTENTIAL WILDLIFE HABITAT BY TOTAL WILDLIFE VALUE SCORE. SUPPORTING
DOCUMENT TO EXHIBIT D OF RESOLUTION NO. 02-3177A ADOPTED BY THE
METRO COUNCIL 8/8/02



Damascus & Sandy Quads (8 of 10)

Regionally Significant Riparian Corridors By Total Functional Score

Functional Scores based on Matrix Specified in Exhibit A, Appendix A of Council Resolution 01-3141c

Riparian Corridor

Total Riparian Score >= 6 (>= 1 Primary)

Total Riparian Score < 6 (All Secondary)

Site scores based on relative performance of the following Riparian functions:

1. Microclimate and Shade
2. Streamflow Moderation and Water Storage
3. Bank Stabilization, Sediment and Pollution Control
4. Large Wood and Channel Dynamics
5. Organic Material Sources

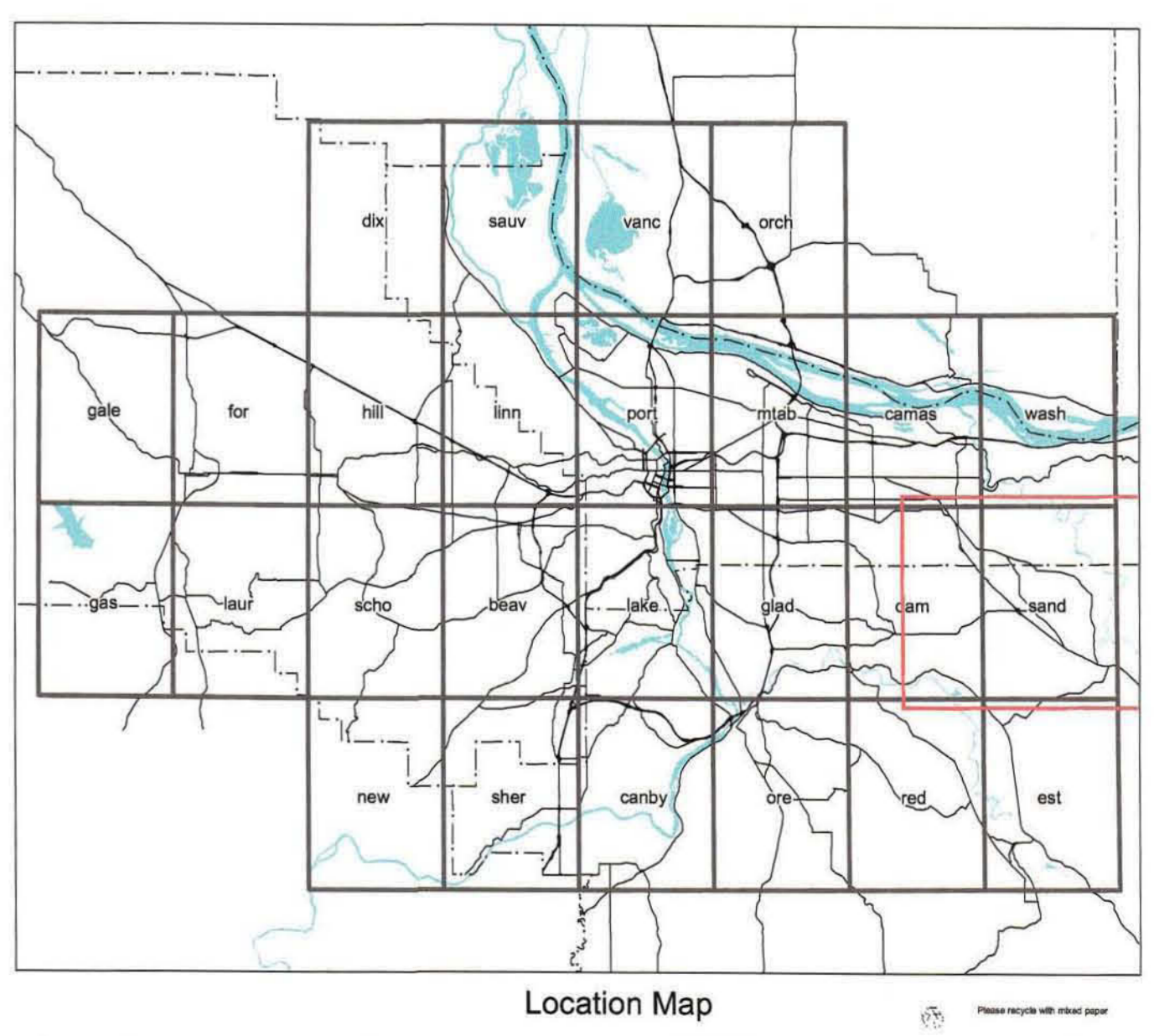
- Area Outside Metro Jurisdiction
- River & Lake Areas
- Metro UGB
- Metro Boundary
- County Boundaries
- City Boundaries
- Section Lines
- MFW Study Area Boundary
- Site Boundaries
- Site Sub Boundaries
- Alternative Analysis Study Area Boundaries
- Taxlots
- Stream Centerlines



METRO DATA RESOURCE CENTER
 600 NORTHEAST GRAND AVENUE PORTLAND, OREGON 97232-2736
 TEL (503) 797-1742 FAX (503) 797-1909
 dro@metro.dst.or.us www.metro-region.org



1 inch equals 0.38 miles
 0 0.5 1 Miles

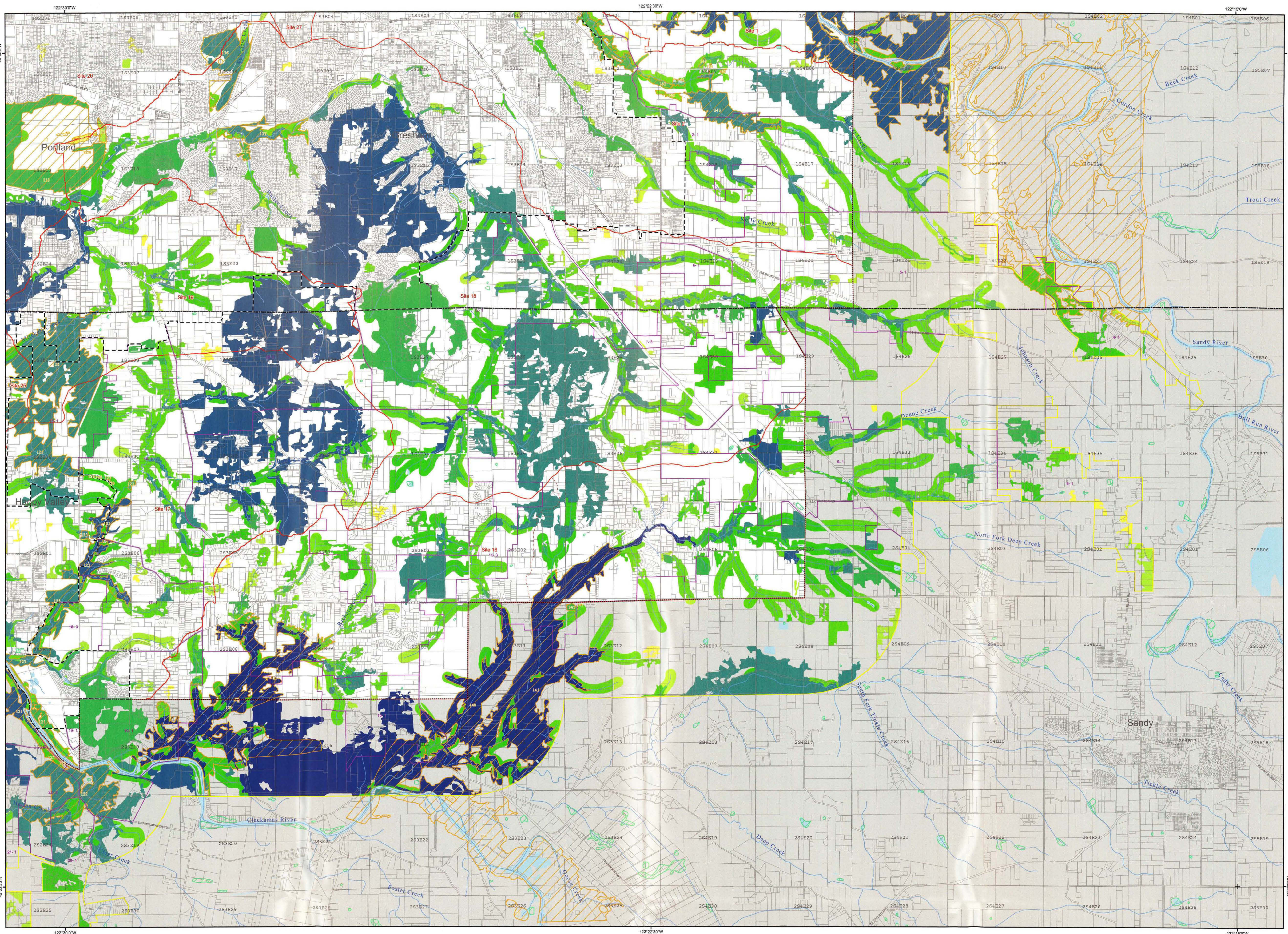


4/17/2002

THE INFORMATION ON THIS MAP WAS DERIVED FROM DIGITAL DATABASES OF METRO, OR. CURT AND BASED ON THE COURTESY OF THIS MAP. METRO ASSUMES NO RESPONSIBILITY FOR ERRORS, OMISSIONS, OR INADEQUACIES. THERE ARE NO WARRANTIES, EXPRESSED OR IMPLIED, REGARDING THE ACCURACY OF THIS MAP. METRO ASSUMES NO RESPONSIBILITY FOR ANY ERRORS OR OMISSIONS. METRO ASSUMES NO RESPONSIBILITY FOR ANY ERRORS OR OMISSIONS.

080802C-44

TO: METRO COUNCIL FROM: PLANNING DEPARTMENT DATED: 4/17/2002
OVERSIZED MAP: DAMASCUS & SANDY QUADS (8 OF 10) REGIONALLY
SIGNIFICANT RIPARIAN CORRIDORS BY TOTAL FUNCTIONAL SCORE,
SUPPORTING DOCUMENT TO EXHIBIT A OF RESOLUTION NO. 02-3176
ADOPTED BY THE METRO COUNCIL 8/8/02



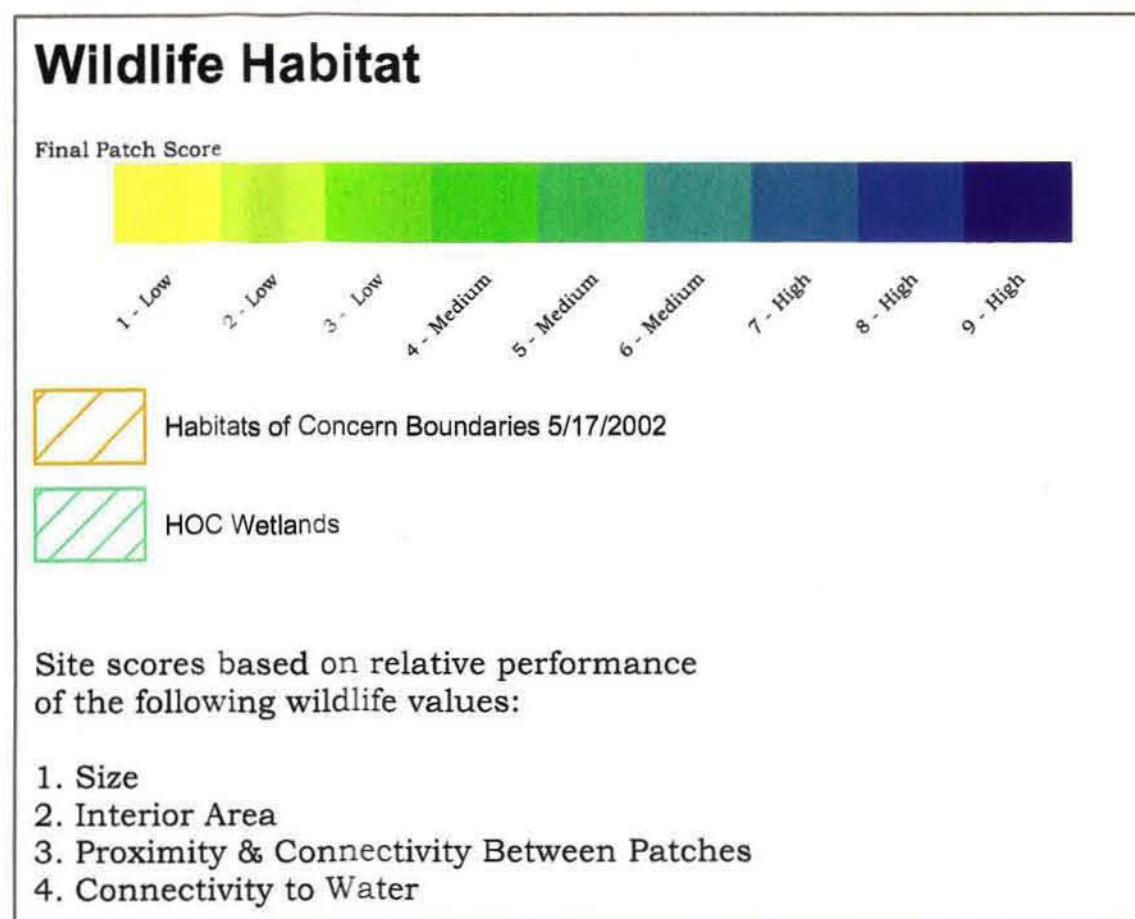
Damascus & Sandy Quads (8 of 10)

Potential Wildlife Habitat

By Total Wildlife Value Score

Wildlife value scores and habitats of concern are based on the criteria matrix attached to proposed Council Resolution 02-3177.

4/17/2002
Decision Draft

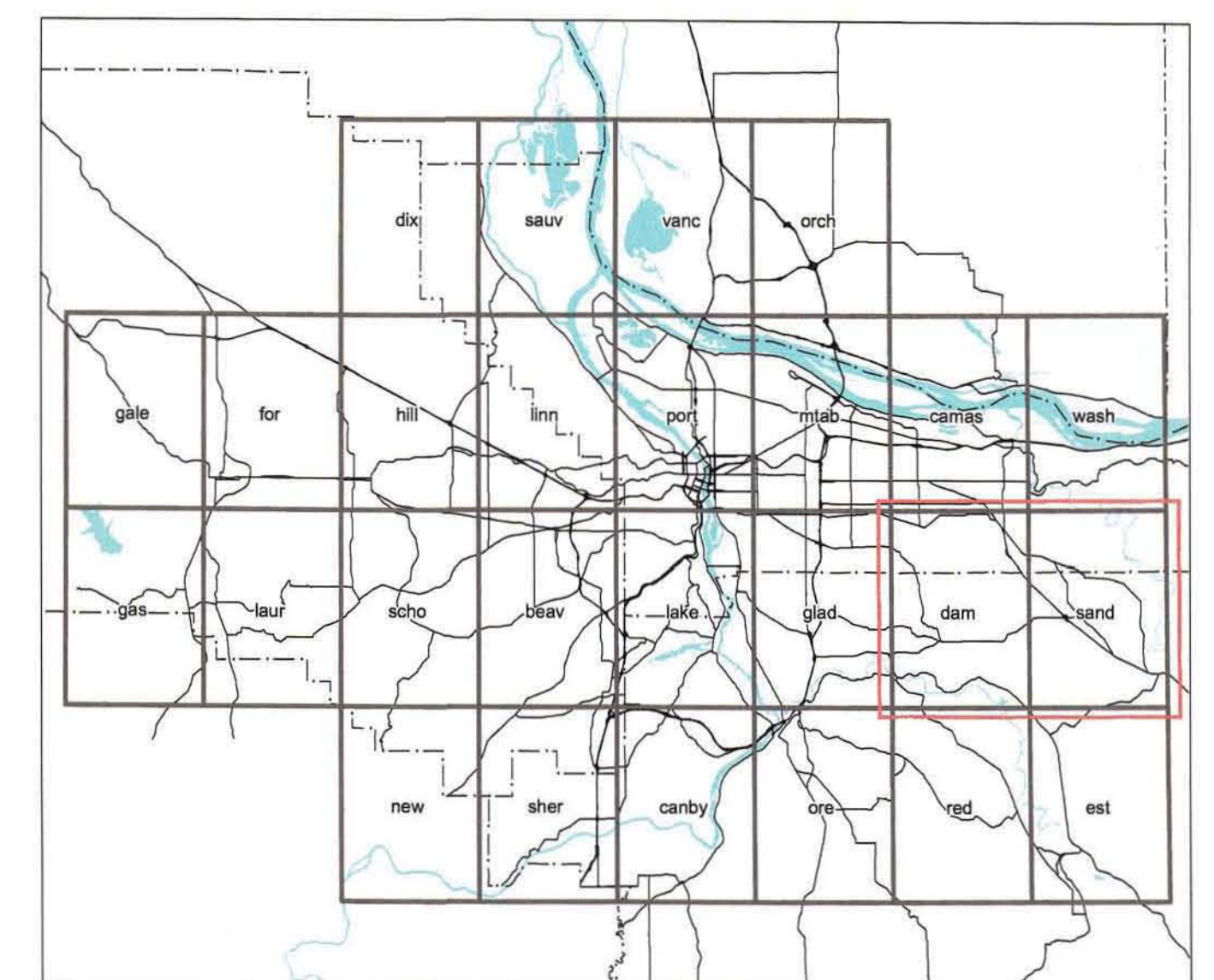


- Area Outside Metro Jurisdiction
- River & Lake Areas
- Metro UGB
- Metro Boundary
- County Boundaries
- Section Lines
- Site Boundaries
- Site Sub Boundaries
- Alternative Analysis Study Area Boundaries
- Fish & Wildlife Study Area Boundary
- Stream Centerlines



METRO DATA RESOURCE CENTER
600 NORTHEAST GRAND AVENUE | PORTLAND, OREGON 97232-2736
TEL (503) 797-1742 FAX (503) 797-1909
drc@metro.dat.or.us www.metro-region.org

1 inch equals 0.38 miles
0 0.5 Miles



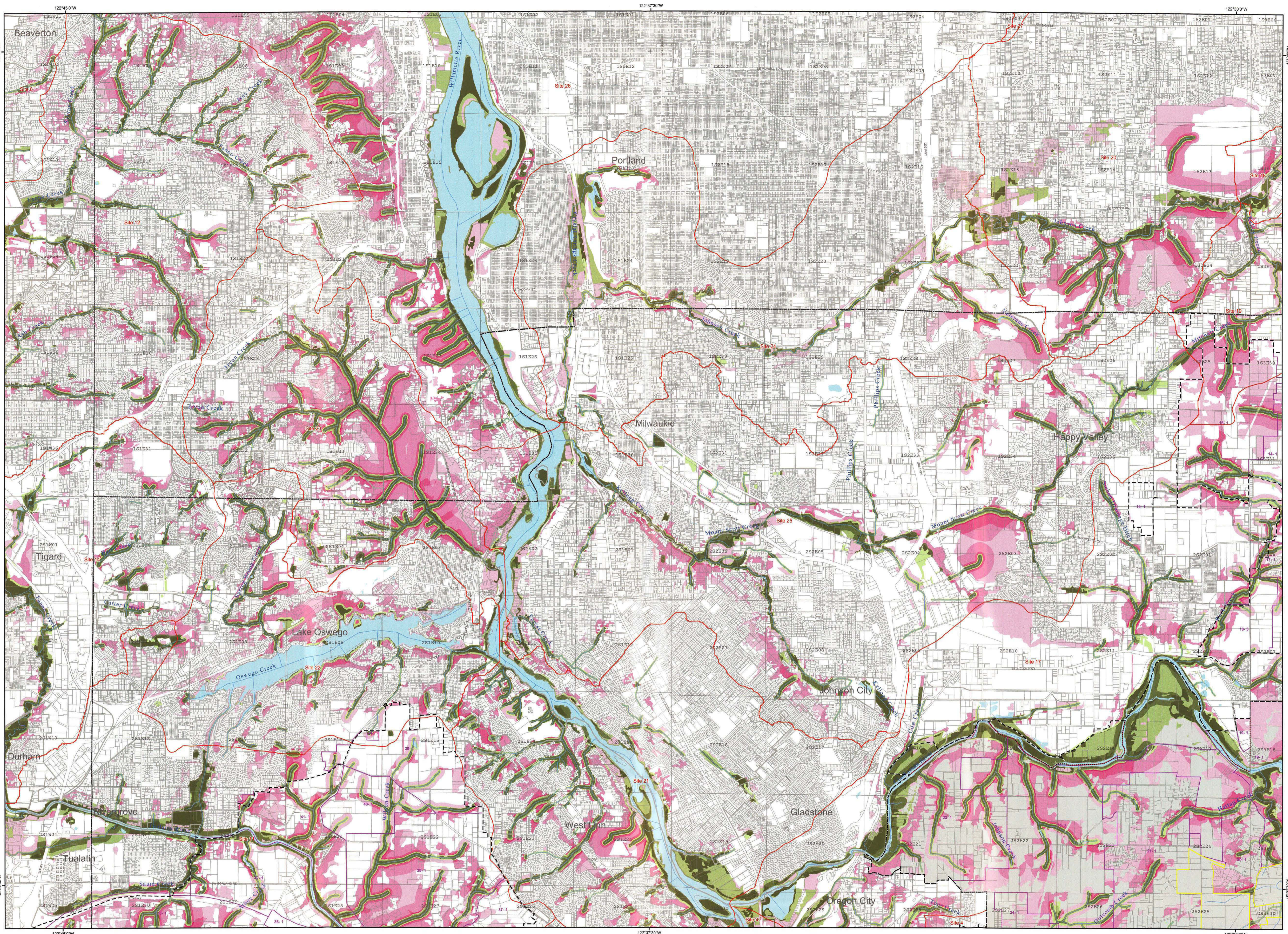
Location Map

The information on this map was derived from digital databases on March 1, 2002. Users who rely on the creation of this map, Metro cannot accept any responsibility for errors, omissions, or other inaccuracies. There are no warranties, express or implied, including the accuracy or fitness for a particular purpose, accompanying this product. However, notification of any errors will be appreciated.

SOURCES:
TAX LOT MAP
County Assessor and Taxation Office, 2001. Data collection scale is 1"=100' in urban areas and 1"=200' or 1"=400' in rural areas. Horizontal accuracy is plus or minus five feet of better fit elsewhere. Metrolink, Clingon City, Tigard and Multnomah County. Other areas are plus or minus ten feet.

080802c-43

TO: METRO COUNCIL FROM: PLANNING DEPARTMENT DATED:
4/17/2002 DECISION DRAFT OVERSIZED MAP: DAMASCUS &
SANDY QUADS (8 OF 10) POTENTIAL WILDLIFE HABITAT BY
TOTAL WILDLIFE VALUE SCORE, SUPPORTING DOCUMENT TO
EXHIBIT D OF RESOLUTION NO. 02-3177A ADOPTED BY THE
METRO COUNCIL 8/8/02



Lake Oswego & Gladstone Quads (7 of 10)

Regionally Significant Riparian Corridors By Total Functional Score

Riparian Corridor

Total Riparian Score >= 6 (>= 1 Primary)

Total Riparian Score < 6 (All Secondary)

Site scores based on relative performance of the following Riparian functions:

1. Microclimate and Shade
2. Streamflow Moderation and Water Storage
3. Bank Stabilization, Sediment and Pollution Control
4. Large Wood and Channel Dynamics
5. Organic Material Sources

- Area Outside Metro Jurisdiction
- River & Lake Areas
- Metro UGB
- Metro Boundary
- County Boundaries
- City Boundaries
- Section Lines
- MFW Study Area Boundary
- Site Boundaries
- Site Sub Boundaries
- Alternative Analysis Study Area Boundaries
- Taxlots
- Stream Centerlines

Functional Scores based on Matrix Specified in Exhibit A, Appendix A of Council Resolution 01-3141c

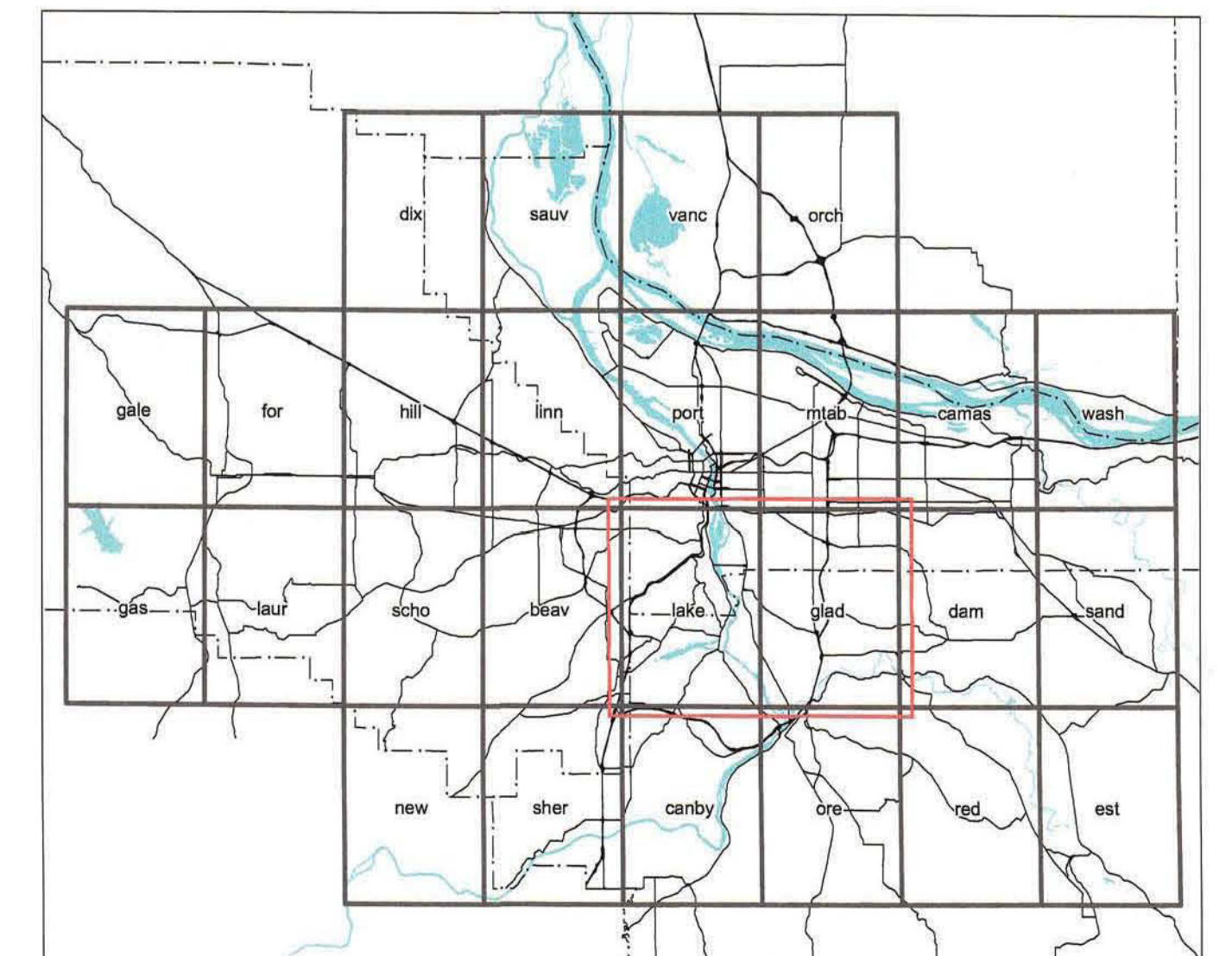
4/17/2002



METRO DATA RESOURCE CENTER
600 NORTHEAST GRAND AVENUE PORTLAND, OREGON 97232-2736
TEL (503) 797-1742 FAX (503) 797-1909
dro@metro.dst.or.us www.metro-region.org



1 inch equals 0.38 miles
0 0.5 Miles



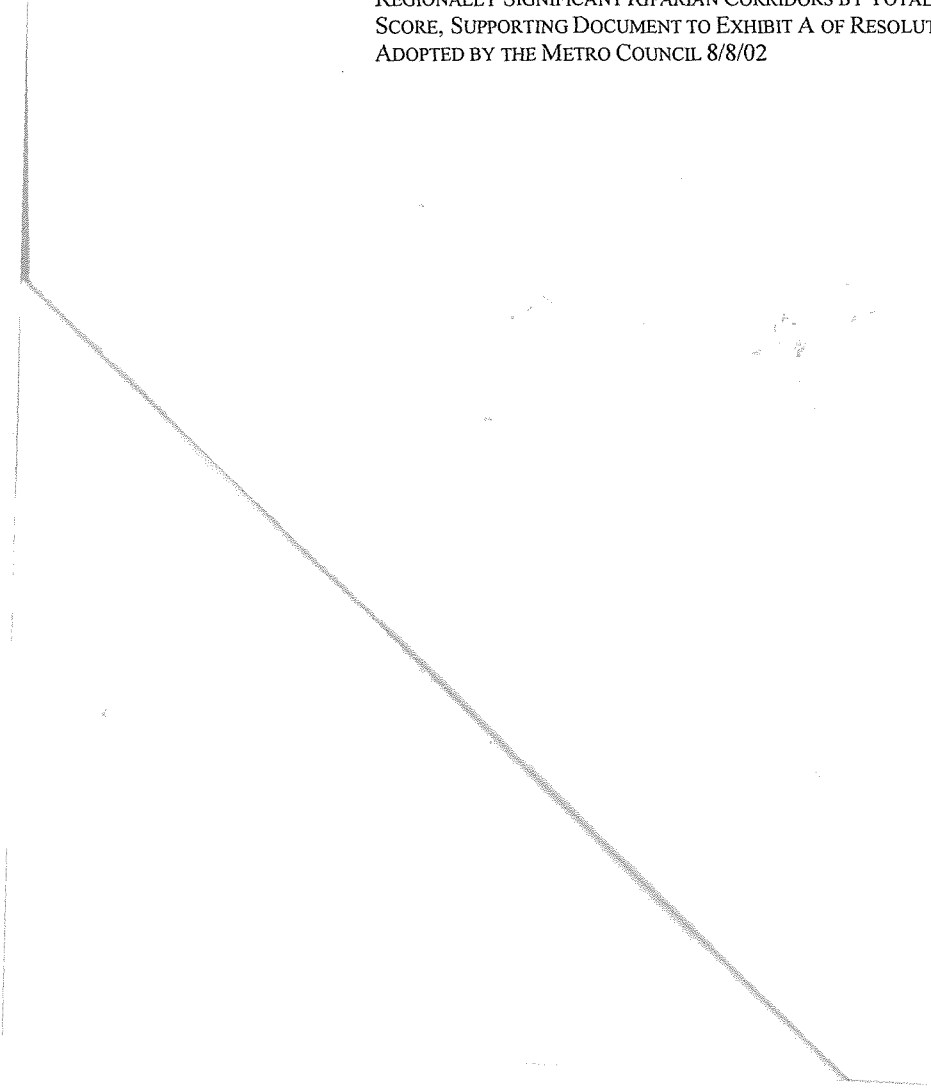
Location Map

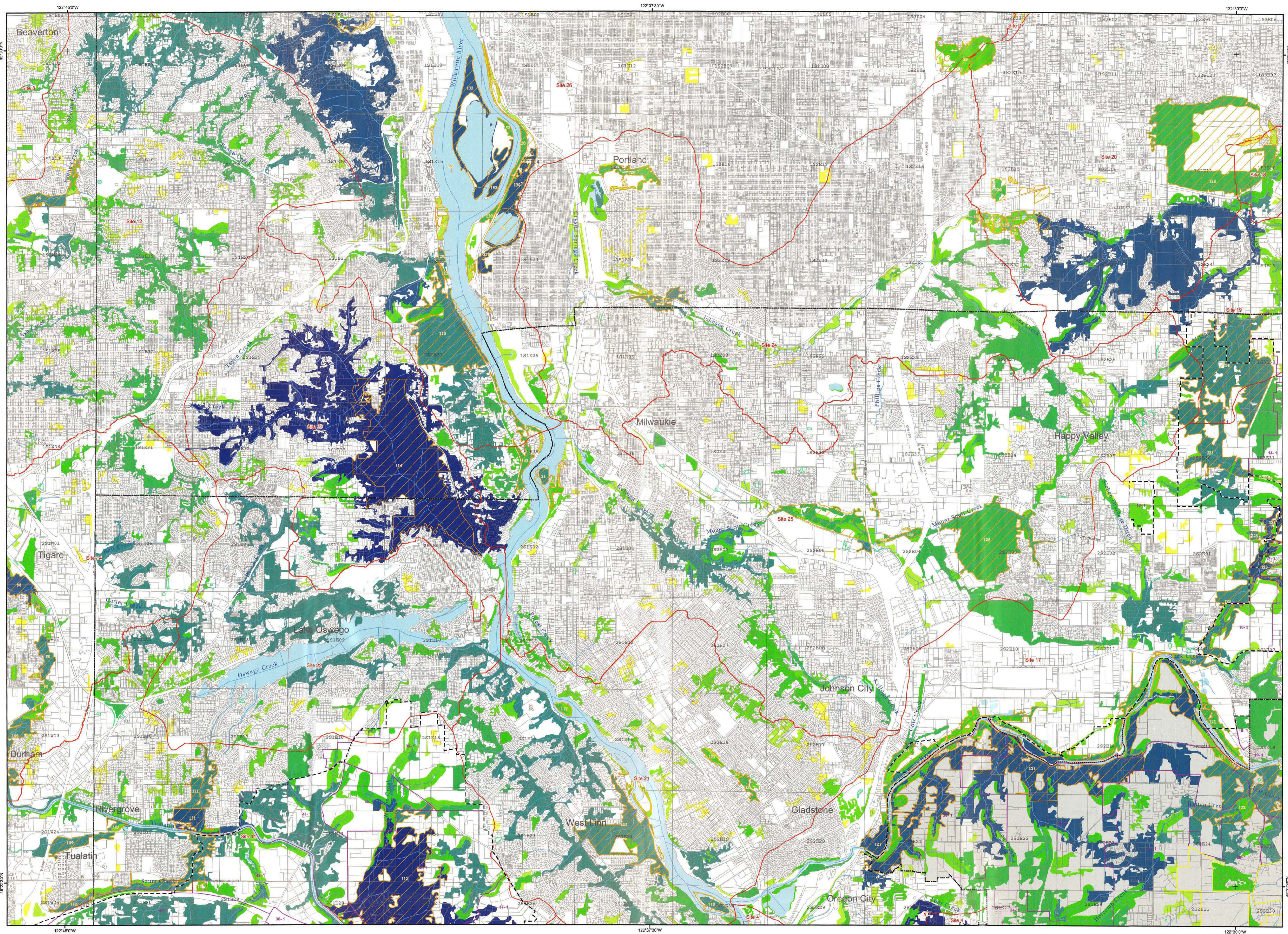
The information on this map was derived from digital databases on Metro's GIS. Care was taken in the creation of this map. Metro cannot accept any responsibility for errors, omissions, or potential inaccuracies. There are no warranties, expressed or implied, including the accuracy or completeness of information for any particular purpose, including this purpose. However, rectification of any errors will be appropriate.

SOURCES:
TAX LOT MAP
County Assessor and Taxation Office, 2001. Data collection was at 1"=100' scale and 1"=200' or 1"=400' scale areas. Horizontal accuracy is plus or minus 1/4" at 1"=100' scale. Vertical accuracy is plus or minus 1/4" at 1"=100' scale. Data are plus or minus 1/4" at 1"=100' scale.

080802c-42

TO: METRO COUNCIL FROM: PLANNING DEPARTMENT DATED: 4/17/2002
OVERSIZED MAP: LAKE OSWEGO & GLADSTONE QUADS (7 OF 10)
REGIONALLY SIGNIFICANT RIPARIAN CORRIDORS BY TOTAL FUNCTIONAL
SCORE, SUPPORTING DOCUMENT TO EXHIBIT A OF RESOLUTION No. 02-3176
ADOPTED BY THE METRO COUNCIL 8/8/02



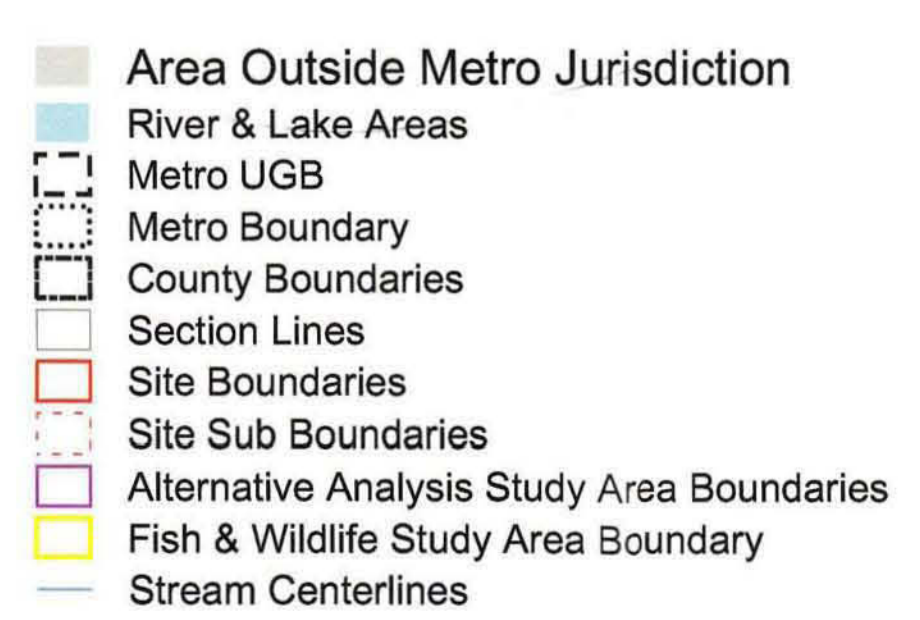
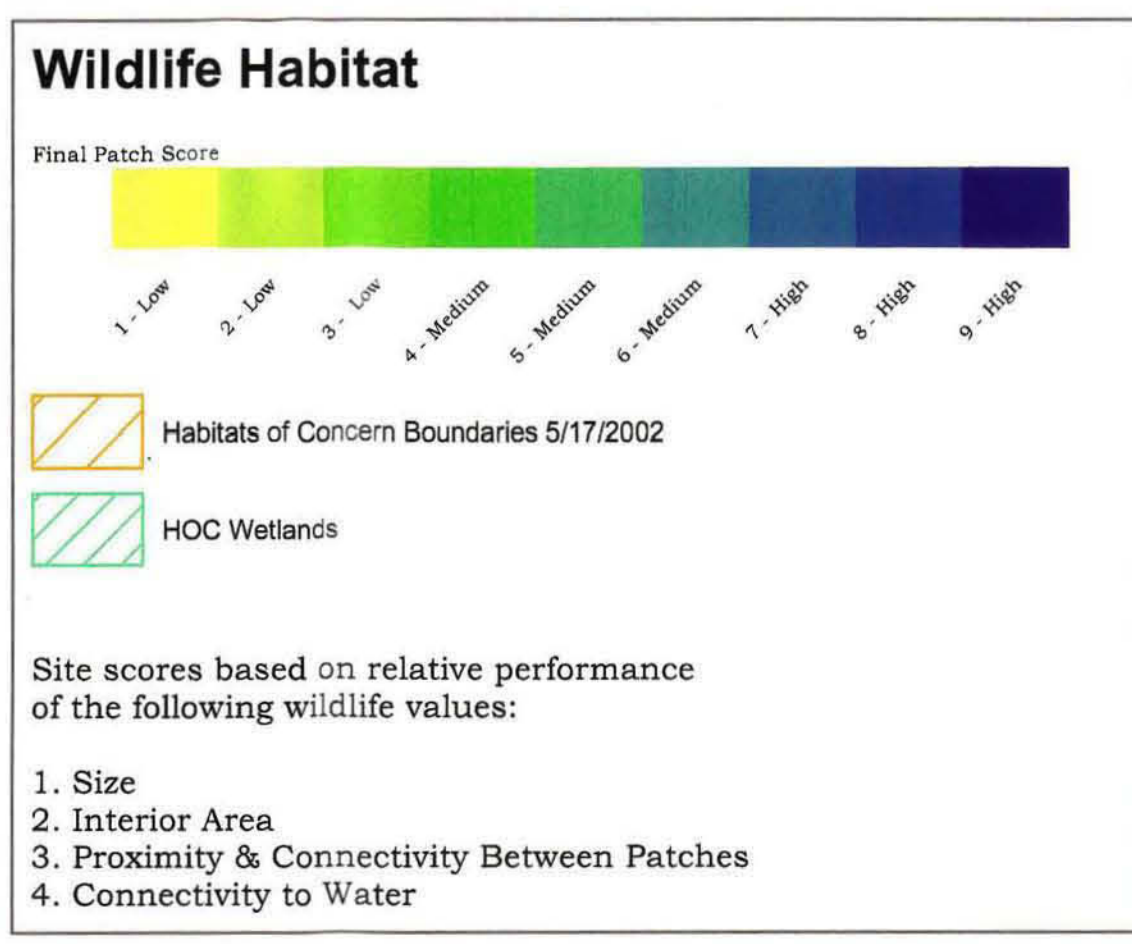


Lake Oswego & Gladstone Quads (7 of 10)

Potential Wildlife Habitat By Total Wildlife Value Score

Wildlife value scores and habitats of concern are based on the criteria matrix attached to proposed Council Resolution 02-3177.

4/17/2002
Decision Draft

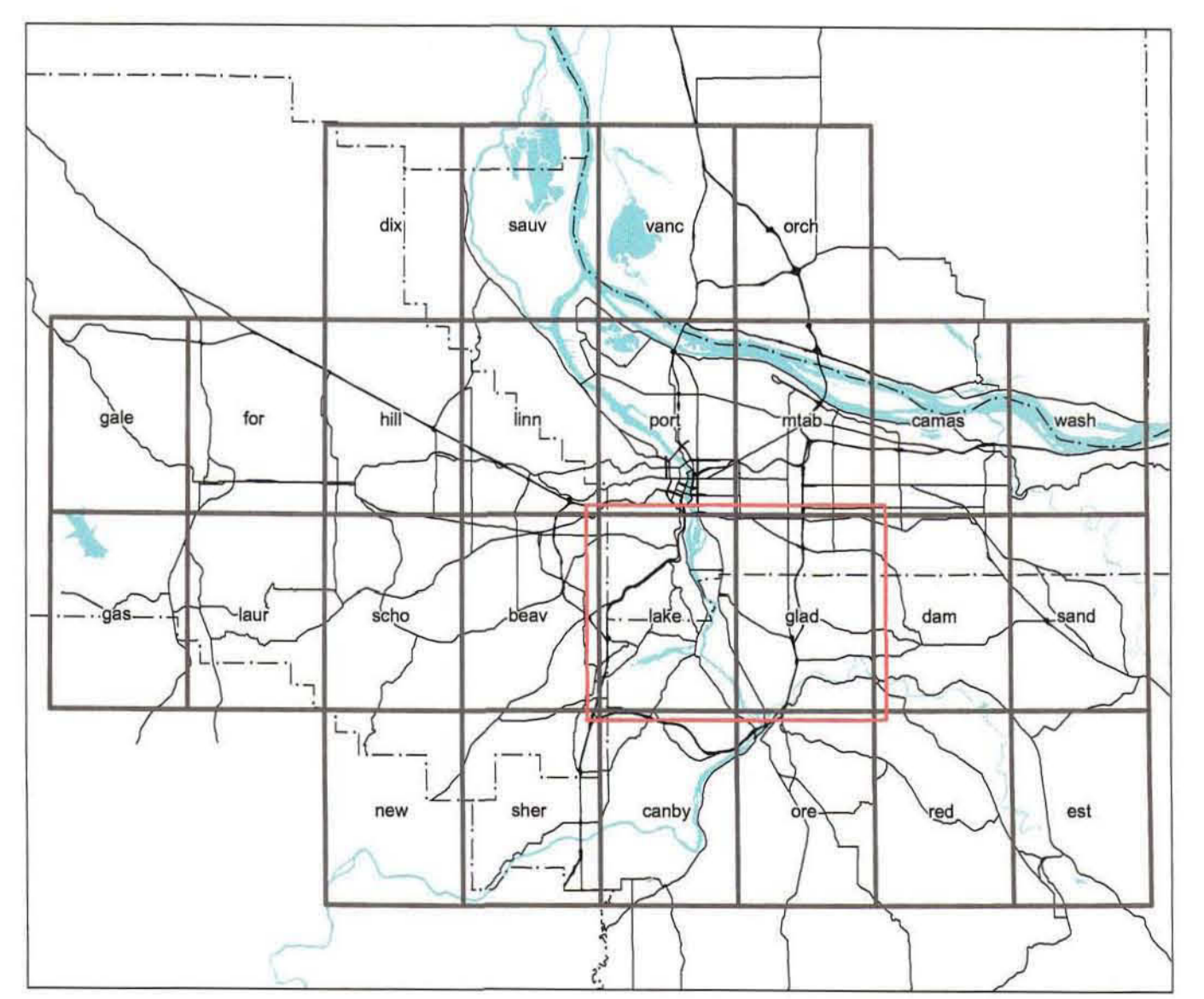
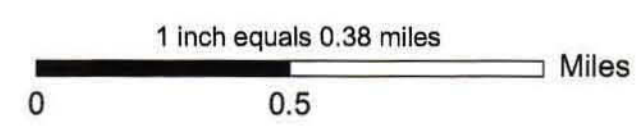


The information on this map was derived from digital databases on Metro's GIS. The data is the property of the Metro. Metro cannot accept any responsibility for errors, omissions, or partial accuracy. There are no warranties, expressed or implied, including the accuracy or completeness of these data for a particular purpose. However, notification of any errors will be appreciated.

SOURCES:
TAX LOT MAP
County Assessment and Taxation Office, 2001. Data collection scale is 1"=100' in plan areas and 1"=200' or 76422' in land areas. Horizontal accuracy is plus or minus one foot or better in Beaverton, Milwaukie, Oregon City, Tigard and Multnomah County. Contour lines are plan or virtual lines.



METRO DATA RESOURCE CENTER
600 NORTHEAST GRAND AVENUE PORTLAND, OREGON 97232-2736
TEL (503) 797-1742 FAX (503) 797-1909
dro@metro.dst.or.us www.metro-region.org



080802c-41

TO: METRO COUNCIL FROM: PLANNING DEPARTMENT DATED: 4/17/2002
DECISION DRAFT OVERSIZED MAP: LAKE OSWEGO & GLADSTONE QUADS (7 OF
10) POTENTIAL WILDLIFE HABITAT BY TOTAL WILDLIFE VALUE SCORE,
SUPPORTING DOCUMENT TO EXHIBIT D OF RESOLUTION NO. 02-3177A ADOPTED
BY THE METRO COUNCIL 8/8/02

