

2003?  
vld  
4/24/12

## Planning For Sustainability?

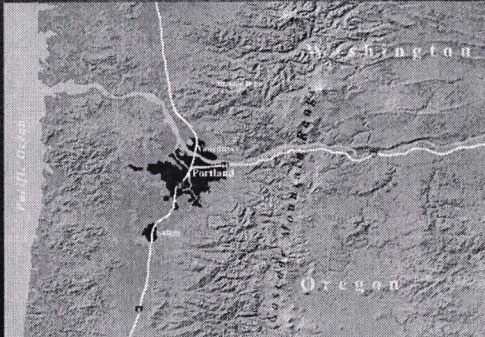


Rex Burkholder  
Metro Councilor

## Portland, Oregon



## The Pacific Northwest



## Portland Metro Region

- 4.2 million people within Metro boundary (37% of the state)
- 1.7 million people in the larger region (including Clark County, Washington)
- 512,400 people in the City of Portland

- Growing Industries
  - Hi-tech
  - Metals
  - Transport equipment
  - Printing
  - Retail & Service sector

- Declining Industries
  - Timber
  - Shipbuilding



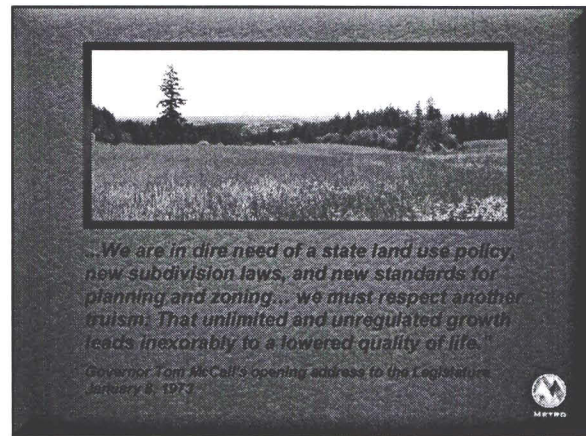
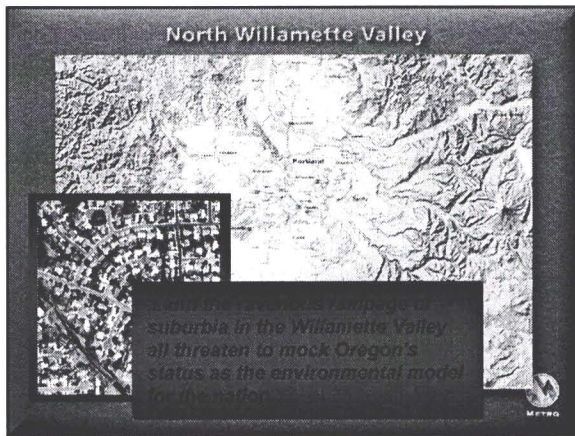
## In the Beginning: A Visionary



"There is a shameless threat to our environment and to the whole quality of life: unfettered despoiling of the land. Sagebrush subdivisions, coastal 'condomania'..."



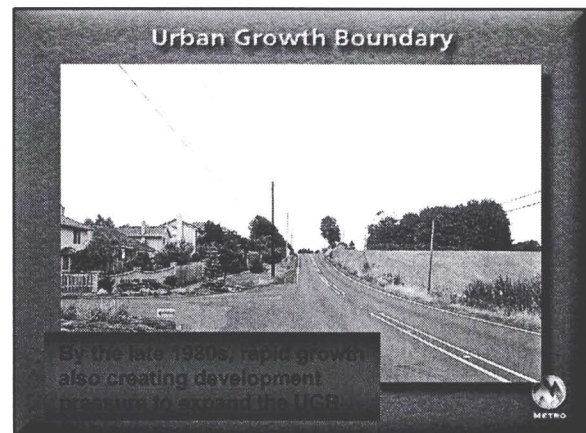
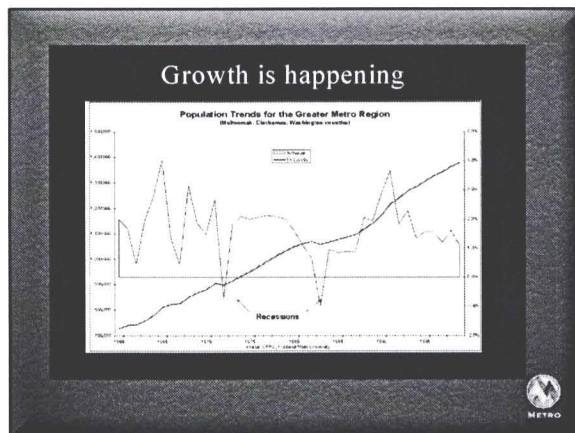
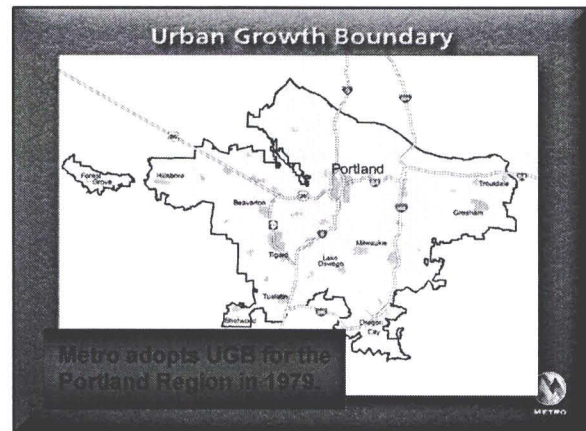




### State Planning Program Established in 1973

- 20-year Urban Growth Boundaries required statewide
- Farm and Forest conservation outside UGBs
- Urbanization focused inside UGBs

METRO





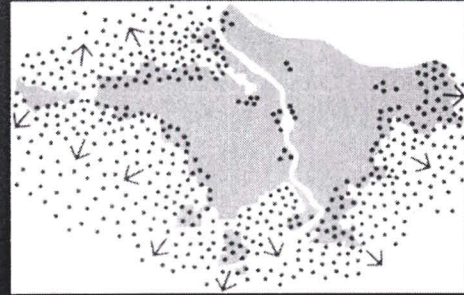
## Region 2040 Plan Begins



- Metro's Urban Growth Goals and
- Concepts for Growth
- Metro Charter in 1992

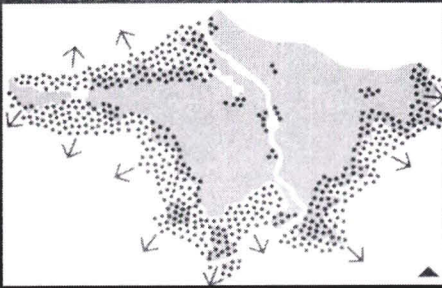


## 2040 Base Case



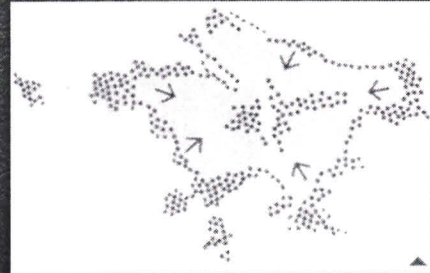
## Option A

Expand at the Edge



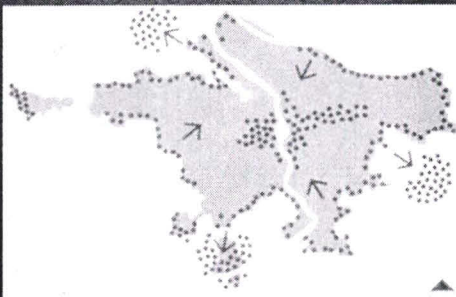
## Option B

Hold the Line



## Option C

Satellite Cities



## 2040 Growth Concept



2040 Premise:  
Changing our land use  
patterns and  
transportation systems  
produces both better





## 2040 Public Outreach



Largest public involvement effort ever in Oregon

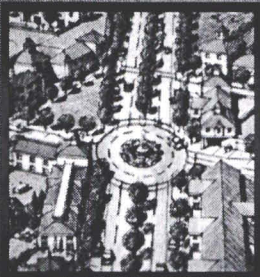
Over 17,000 comments received on Growth Concept



## 2040 Recommended Alternative Unanimously Adopted in 1995



## 2040 Elements: Focusing Growth in Centers



Seven Regional Centers and two dozen Town Centers based on lessons learned in the Central City

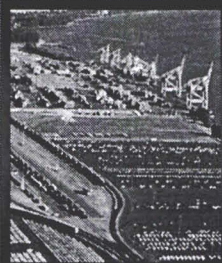
Main Streets and corridors along major streets with transit



## Downtown Portland



## 2040 Elements: Vibrant Ports and Industry



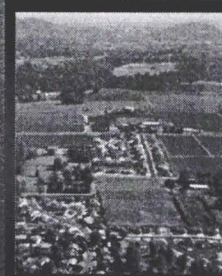
labor markets and regional travel corridors

Protect prime port and industrial areas as "reserves"

Strategically locate new industry to balance housing and



## 2040 Elements: Protected Rural Reserves



rural economy

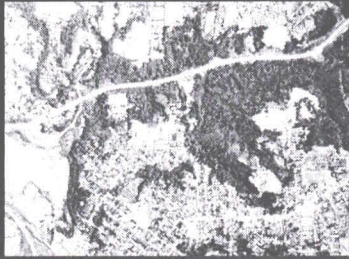
Build on public support for a tight UGB

Preserve the "access to nature" that the region's residents already enjoy

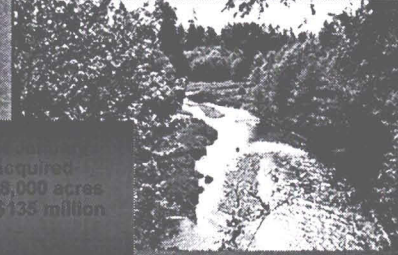




## 2040 Elements: Protected Stream Corridors



## 2040 Elements: Protected Open Spaces

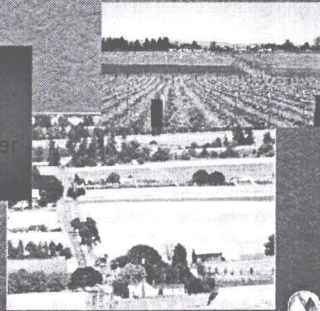


Since 1997, METRO has acquired more than 6,000 acres through a \$135 million bond.



## Farmland is being protected.

In 1998, farm production in the Portland Metro Region totaled over \$500 million.



## 2040 Land Use and Transportation Principles:



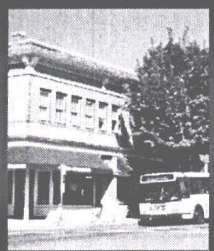
region that contains sprawl and need for roads

- Develop transit and pedestrian oriented centers that reduce need surface parking

Pursue job/housing



## ...2040 Land Use and Transportation Principles...



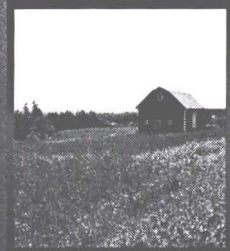
- Provide interconnected local streets to reduce congestion on major streets

- Make bike travel feasible and safe

Emphasize transit



## ...2040 Land Use and Transportation Principles



character

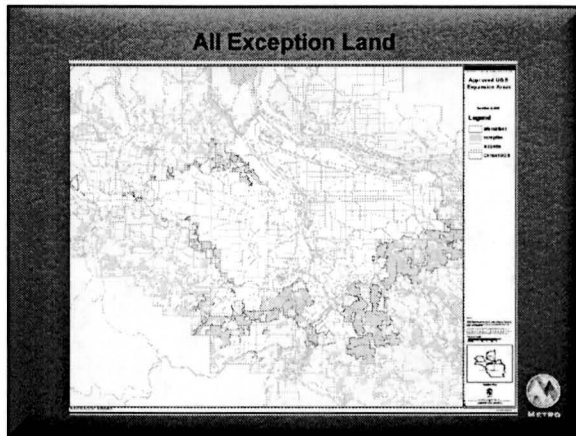
- Maintain separation between neighboring communities

- "Green Corridors" along rural highways

Protect rural economy from











Title slide

- Start w/ last slide

2003?  
vld  
4/24/12

### What is Metro?


- ❖ Elected regional government
- ❖ Manages growth, transportation, regional parks and solid waste
- ❖ Serves as MPO for Portland region
- ❖ Allocates federal transportation funds to 24 cities and 3 counties



### Portland Metro Region


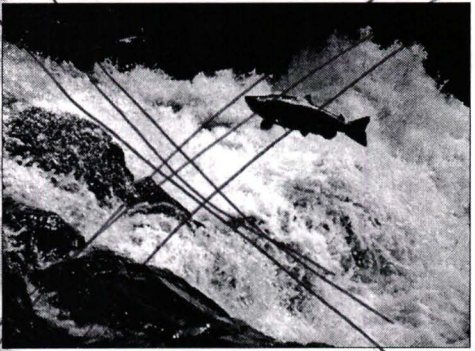

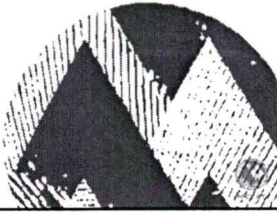
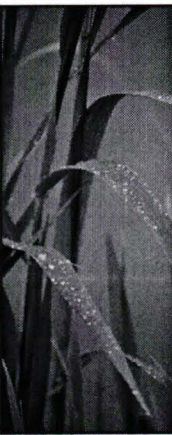
- 1.3 Million people within Metro boundary (37% of the state)
- 1.7 million people in the larger region (including Clark County, Washington)
- 512,400 people in the City of Portland
- 23 smaller cities (615 to 85,000 people each)

- Growing Industries
  - Hi-tech
  - Metals
  - Transport equipment
  - Printing
  - Retail & Service sector
- Declining Industries
  - Lumber/wood
  - Paper
  - Food processing





add to Metro: protection region  
→ maybe title

### Protecting the NATURE of our REGION





### Protect Rural Areas

- ❖ Create Green Corridors along rural state highways
- ❖ Mitigate urban overflow on rural routes
- ❖ Maintain rural separation between Metro region and neighbor cities

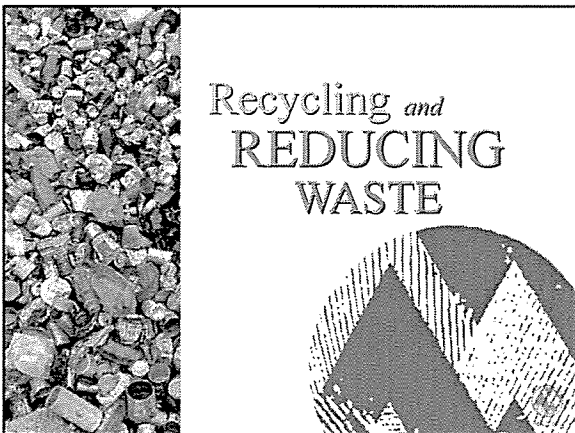
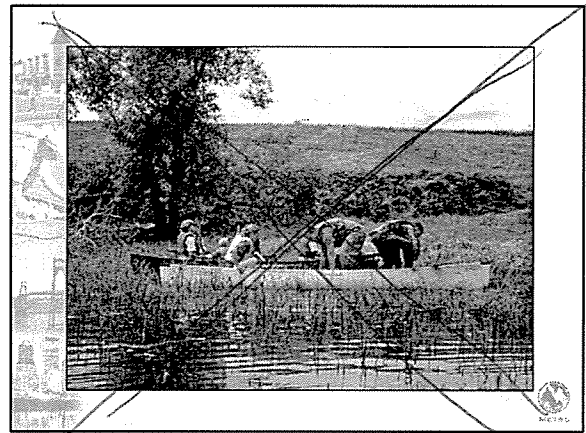
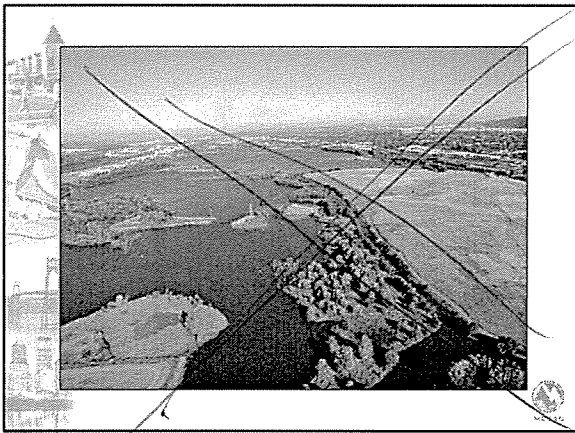
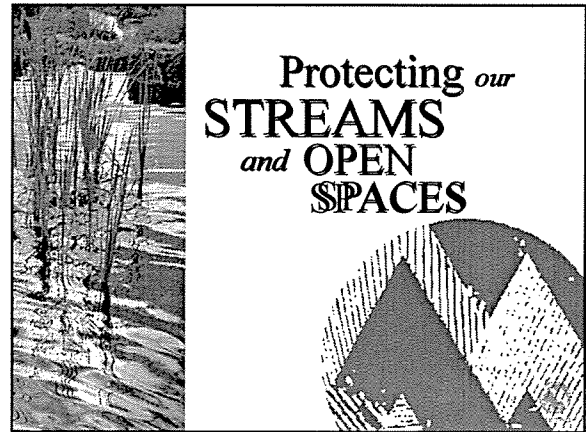
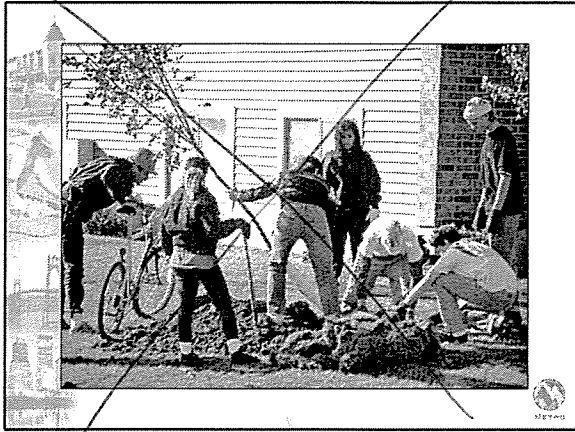


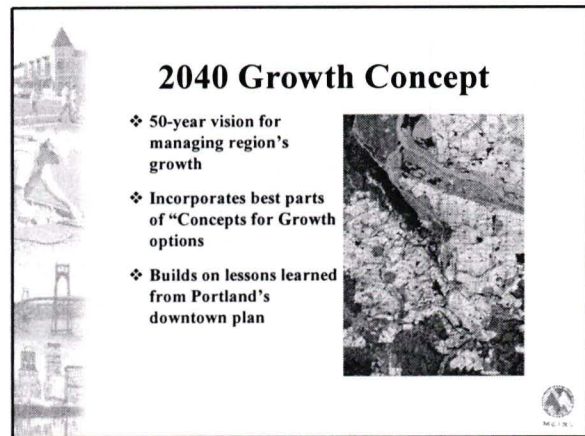
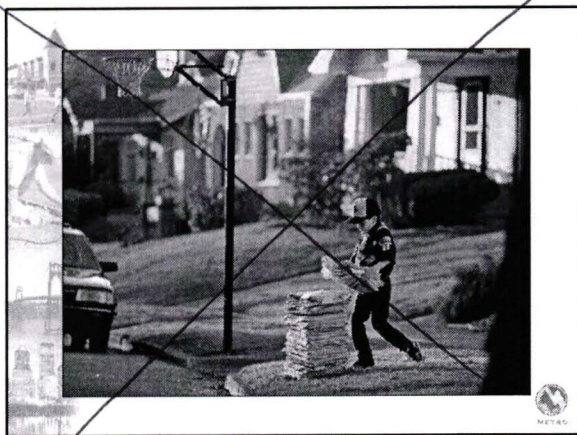
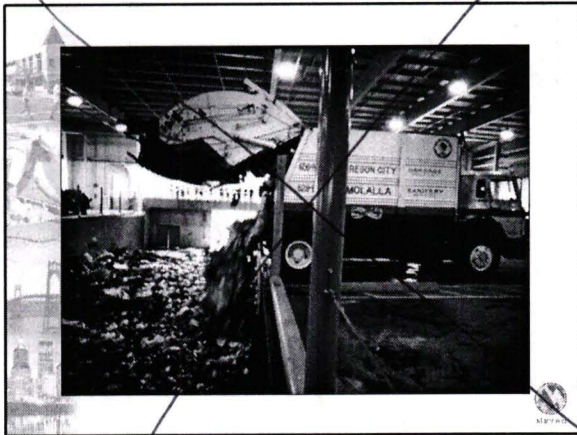
### Nature in the City

- ❖ Network of parks, trails and open spaces
- ❖ Protections for streams and upland natural areas
- ❖ Reduce quantity and improve quality of runoff
- ❖ Manage hazardous waste to protect streams and groundwater







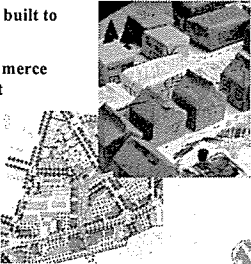



refer to ↓  
 (2040 booklet)





## Growth in Centers

- ❖ Compact urban centers built to human scale
- ❖ Mixed housing and commerce served with good transit
- ❖ Focus of civic activities and public services
- ❖ Parking ratios established

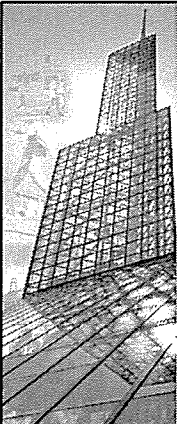
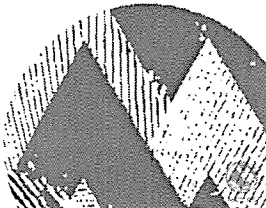

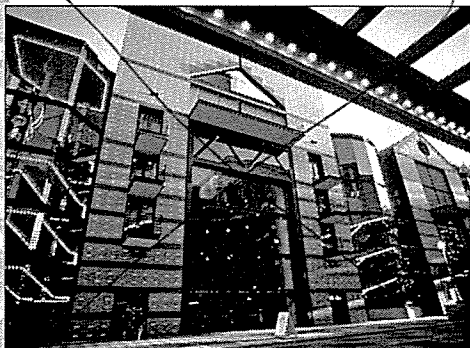

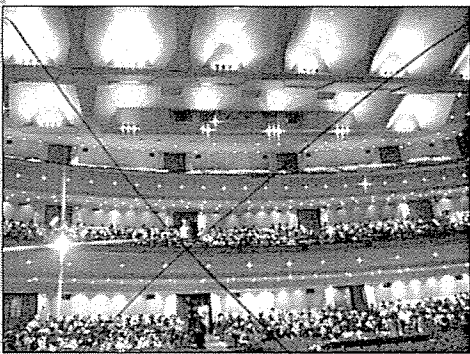






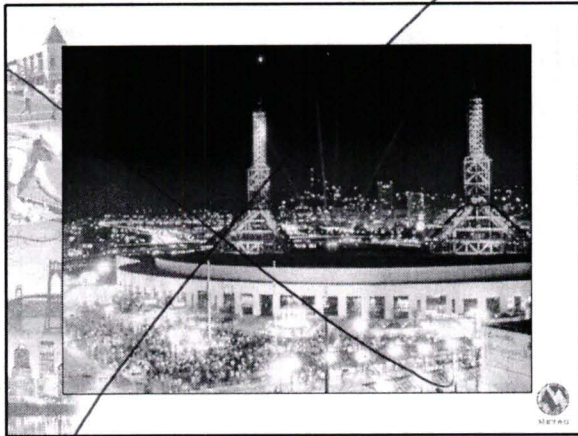
## Protect Industry

- ❖ Maintain freight mobility on highways
- ❖ Ensure quality freight access to ports and industrial areas from region's highway and rail network

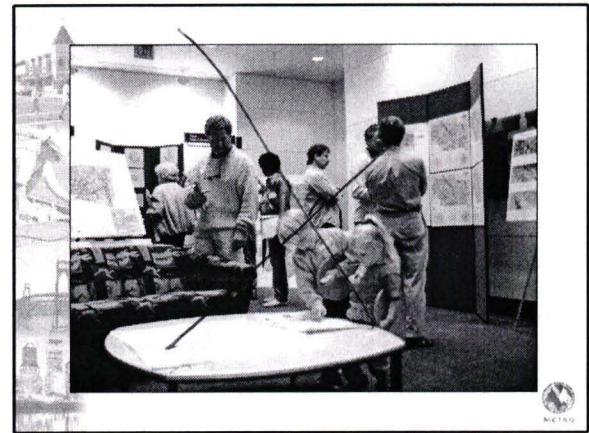
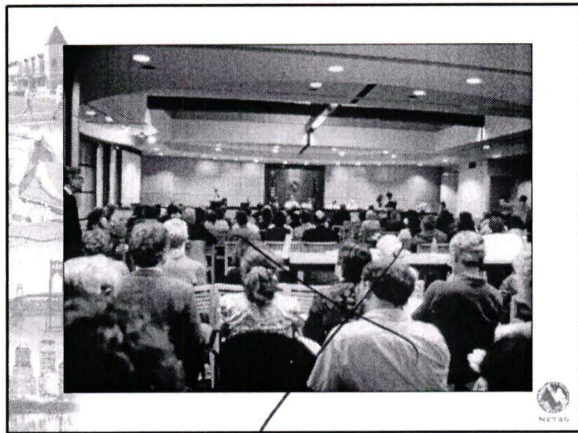



## Supporting our CULTURE and ECONOMY

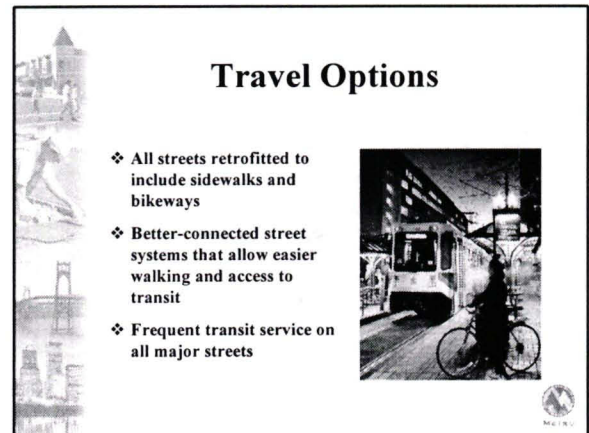
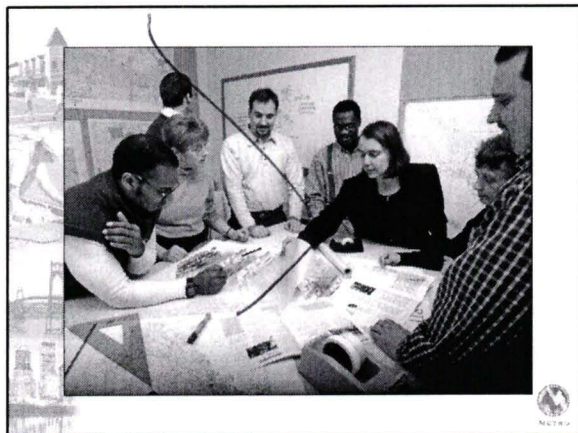












20



20



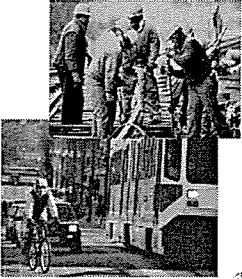

29

30





## Light Rail Opens

- ❖ Banfield light rail opens in late 1986, becoming the centerpiece of downtown plans in Portland and Gresham
- ❖ Westside light rail to Hillsboro begins in 1998
- ❖ Airport service begins in 2001
- ❖ Interstate light rail will begin May 2004

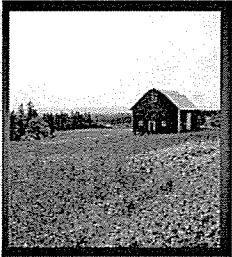



## making it happen


- ❖ Priorities 2004-07 Update currently underway to allocate \$41 million in regional funds
- ❖ Regional Transportation Plan update in 2004; sets 20-year priorities for transportation

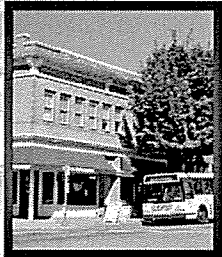
## 2040 Land Use and Transportation Principles




- Emphasize access to nature
- Maintain separation between neighboring communities
- "Green Corridors" along rural highways
- Protect rural economy from urban impacts




## 2040 Land Use and Transportation Principles




- Design streets for people, not just cars
- Provide interconnected local streets to reduce congestion on major streets
- Make bike travel feasible and safe
- Emphasize freight access to terminals



## 2040 Land Use and Transportation Principles:



- Maintain a compact region that contains sprawl and need for roads
- Develop transit and pedestrian oriented centers that reduce need surface parking
- Pursue Jobs/Housing Balance



[www.metro-region.org](http://www.metro-region.org)

~~Rod Monroe~~ Rod Park  
**Metro Councilor**

600 NE Grand Avenue  
 Portland, Oregon 97232  
 (503) 797-1552

[monroer@metro.dst.or.us](mailto:monroer@metro.dst.or.us)



Tony Roma's I-205

2003?

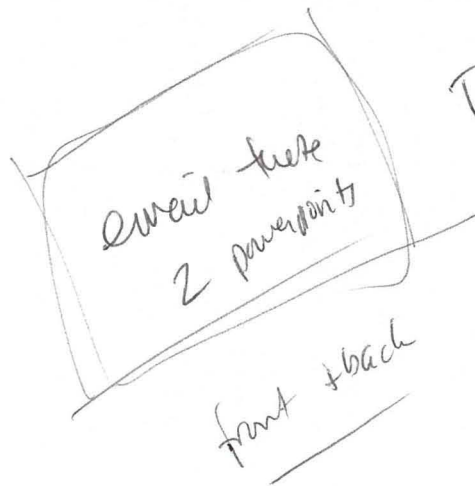
via

4/24/12



## What is Metro?

- ❖ Elected regional government
- ❖ Manages growth, transportation, regional parks and solid waste
- ❖ Serves as MPO for Portland region
- ❖ Allocates federal transportation funds to 24 cities and 3 counties



Top page is  
color, rest  
is black &  
white

~ 30



# Portland Metro Region

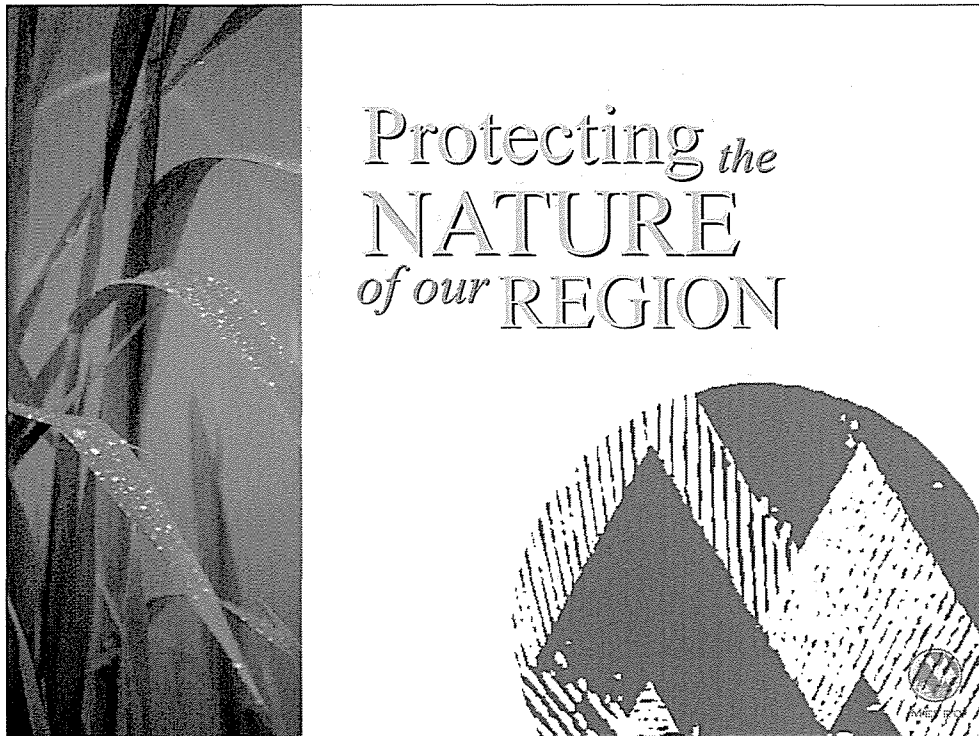
## Population Base

- 1.3 Million people within Metro boundary (37% of the state)
- 1.7 million people in the larger region (including Clark County, Washington)
- 512,400 people in the City of Portland
- 23 smaller cities (615 to 85,000 people each)

## Major Economic Trends

- Growing Industries
  - Hi-tech
  - Metals
  - Transport equipment
  - Printing
  - Retail & Service sector
- Declining Industries
  - Lumber/wood
  - Paper
  - Food processing



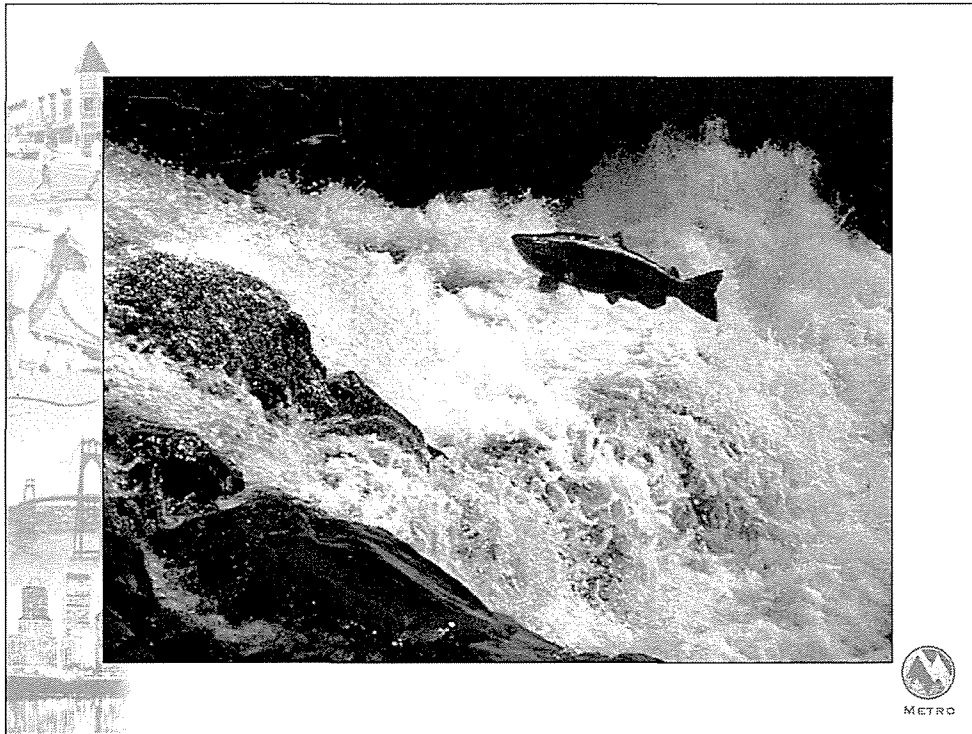


*(Do not read)* **Protecting the nature of our region**

Read:

Planning is Metro's top job. Metro provides a regional forum where cities, counties and citizens can resolve issues related to growth — things such as transportation and land-use choices and increasing the region's recycling efforts. Planning ahead for a healthy environment and stable economy supports livable communities now and protects the nature of our region for the future.



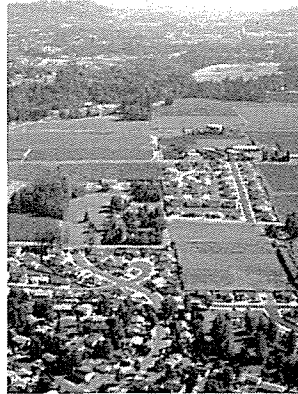


- Habitat for fish and wildlife – Mention Salmon Festival Oct. 11-12, Oxbow Park
- Goal 5, one of 19 statewide planning goals, protects natural resources, open spaces and scenic and historic areas. Metro is addressing Goal 5 by developing a program to protect significant fish and wildlife habitat within the metro area.
- Goal 5 Public Testimony Oct. 23 and 30 Metro Council meetings

# Protect Rural Areas

- ❖ Create Green Corridors along rural state highways
- ❖ Mitigate urban overflow on rural routes
- ❖ Maintain rural separation between Metro region and neighbor cities

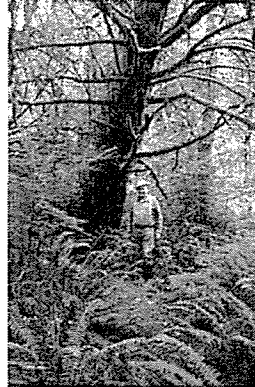
*Canby, Scapposa,  
Sandy*





# Nature in the City

- ❖ Network of parks, trails and open spaces
- ❖ Protections for streams and upland natural areas
- ❖ Reduce quantity and improve quality of runoff
- ❖ Manage hazardous waste to protect streams and groundwater



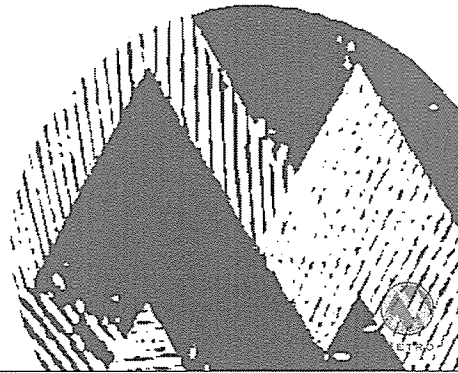


34. Metro's habitat restoration and environmental education grant program funds projects such as planting trees, re-vegetation, pulling ivy and other cleanup projects to improve habitat for fish and wildlife.





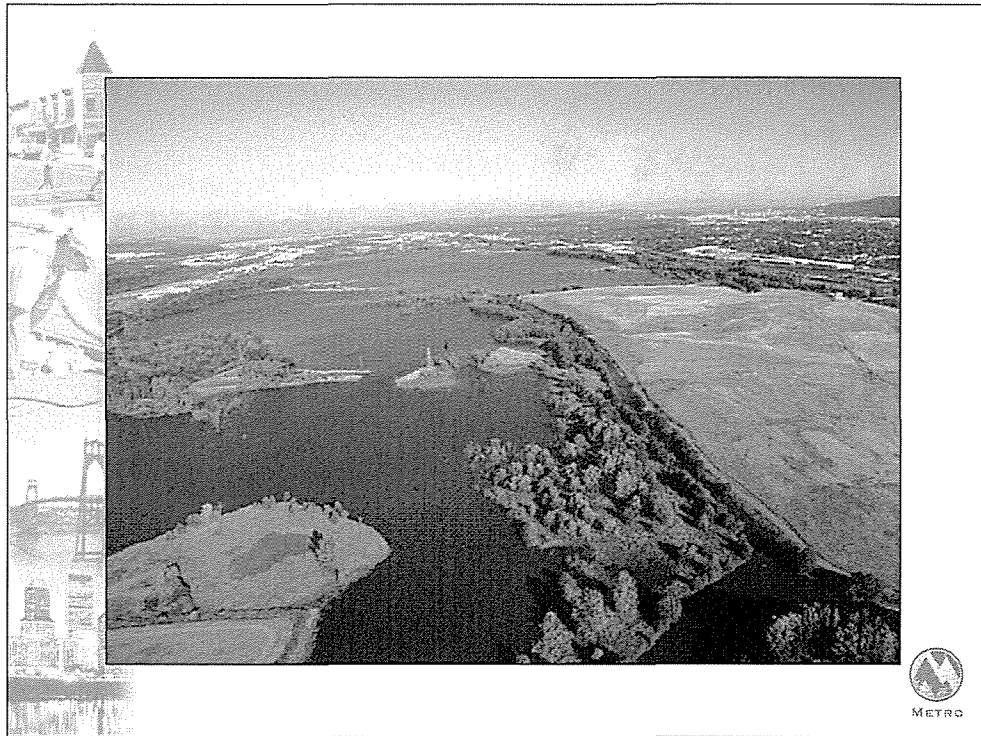
## Protecting *our* **STREAMS** *and* **OPEN** **SPACES**



### 16. *(Do not read)* Protecting our streams and openspaces

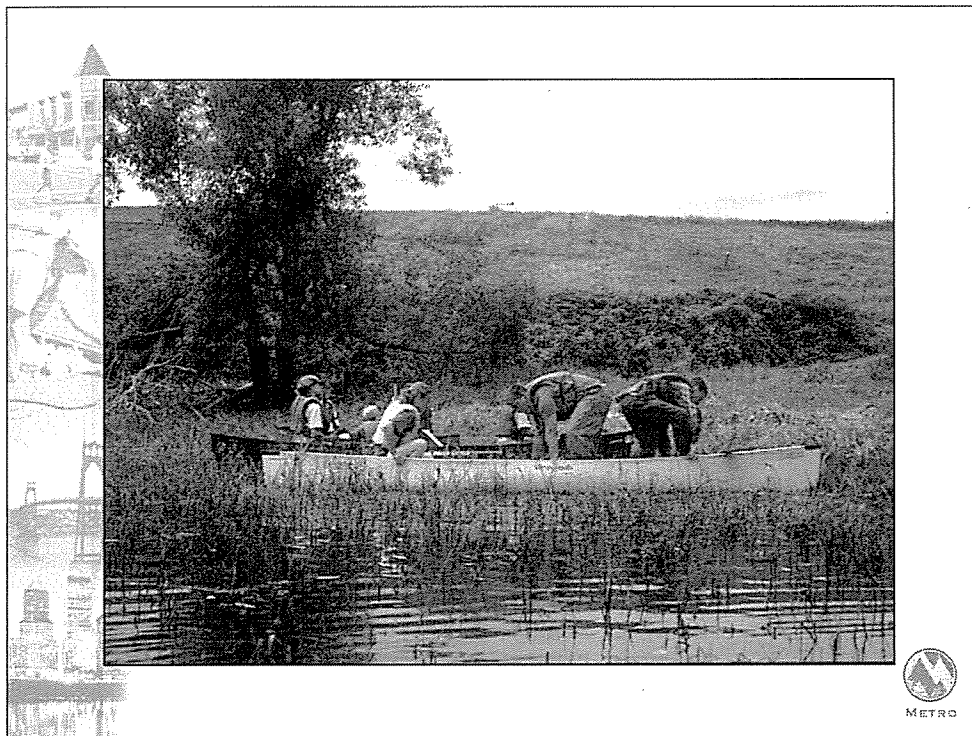
Read:

Metro's environmental planning effort protects the region's natural resources in three ways. Metro is carrying out the 1998 Stream and Floodplain Protection Plan, developing a Fish and Wildlife Habitat Protection Plan and updating the Greenspaces Master Plan as we work to complete a cooperative regional system of parks, natural areas, greenways and trails.



23. Smith and Bybee Lakes Wildlife Area in North Portland. The lakes border the western side of St. Johns Landfill, the region's dump for 50 years. In 1990, when the city of Portland turned the landfill over to Metro trust funds were created to enhance the surrounding community and plans were made to restore and protect the lakes and the landfill.



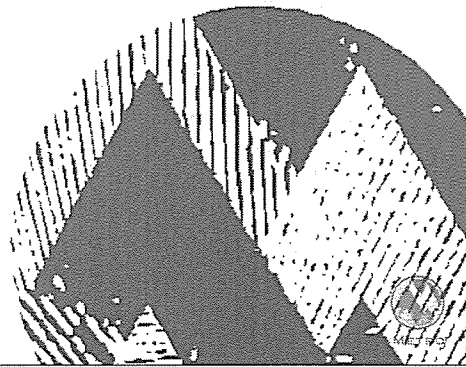


24. As a result of Metro's restoration efforts, naturalists and volunteers can be found monitoring the thriving Western painted turtle population at Smith and Bybee lakes.

Through the St. Johns trust fund; and similar funds set aside for other areas affected by Metro garbage disposal transfer sites, Metro has distributed more than \$3 million in community enhancement grants since 1986.



## Recycling *and* REDUCING WASTE



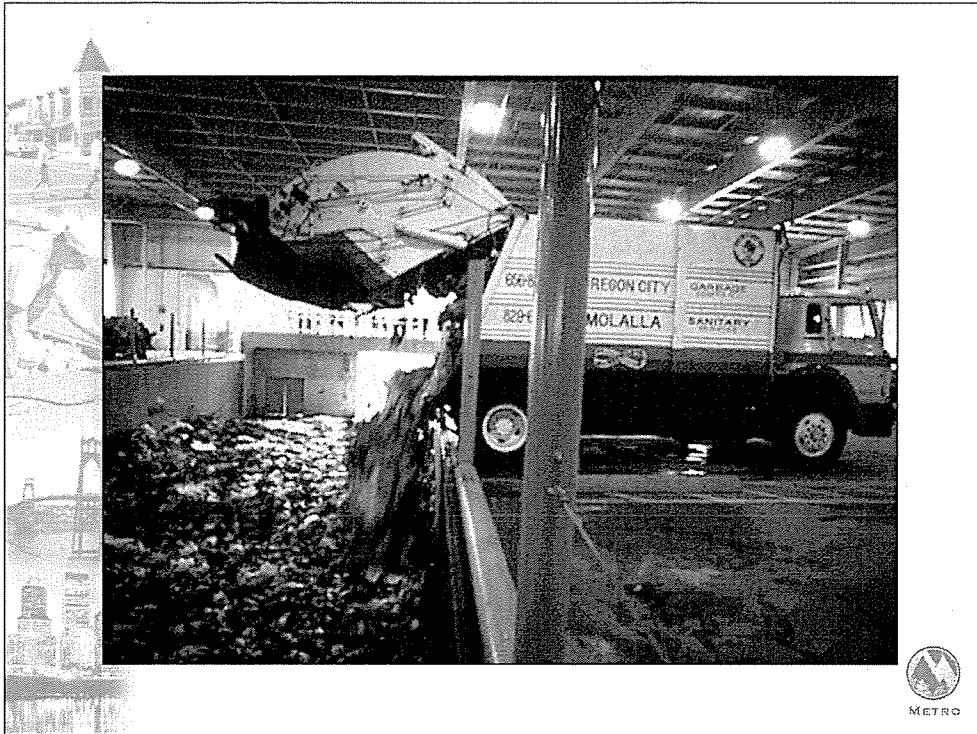
27. . . . recycling and reducing waste (*Do not read*)

What happens to the garbage that used to go to the St. Johns Landfill?

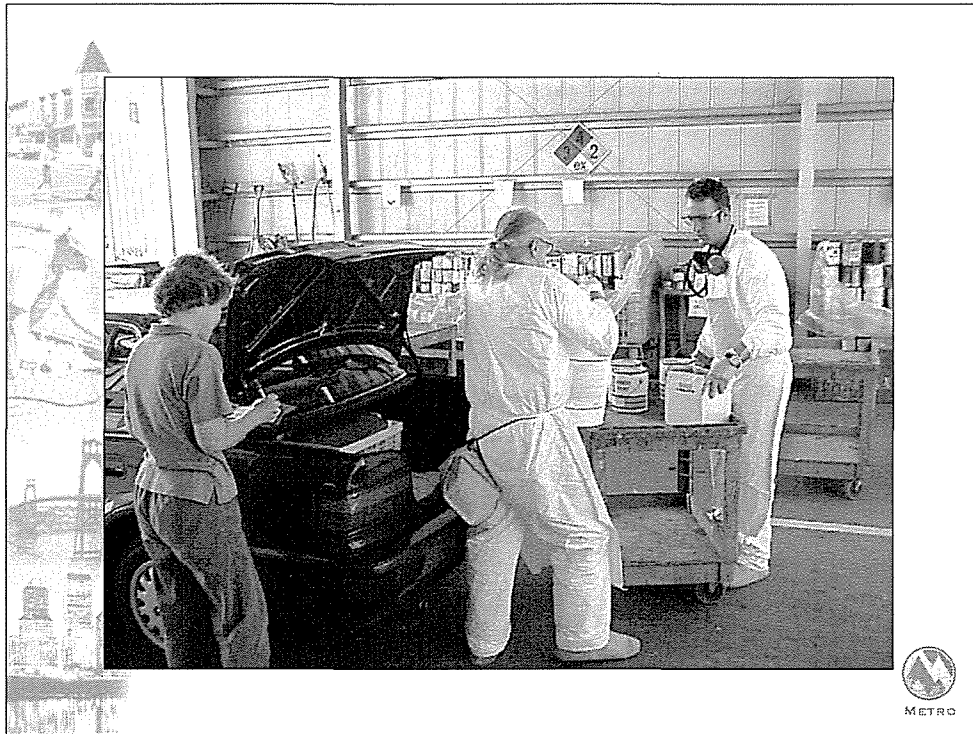




29. Metro's job is to help residents recycle or prevent as much garbage as possible, and then to get what remains from Metro's garbage transfer stations to a state-of-the-art landfill in Arlington, Oregon. Metro handles garbage disposal at the regional level; private local haulers pick up recyclables and trash at your curb.

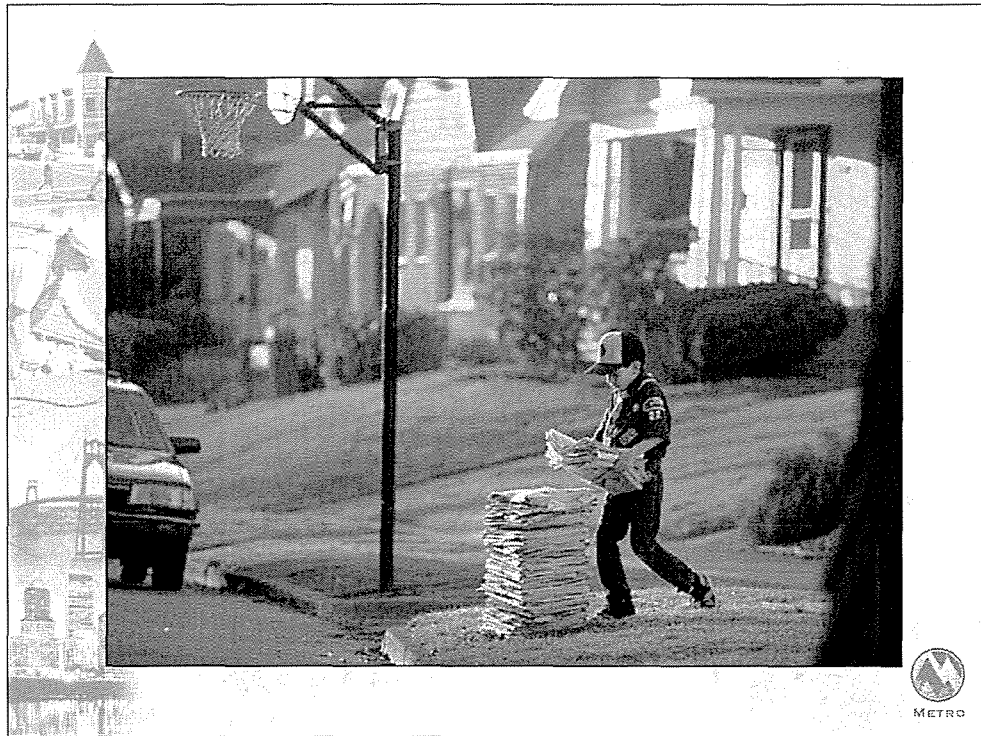


28. Each year, the growing number of residents and businesses in the region create 2 million tons of garbage. After recycling, that still leaves 1.2 million tons to be landfilled.



32. Metro also protects our environment by operating two hazardous waste collection centers where we process and recycle paint, pesticides and other toxic materials.





This region is a national leader in the recycling movement. In 1988, the region's recycling rate was 26 percent. By 1997, it had climbed to 42 percent and 52 percent by the year 2000.

Today 54%  
Goal 62%



(Do not read) **"It's better to plan for growth than ignore it"**


Read:

Metro serves 1.3 million people in 24 cities and the urban parts of Washington, Clackamas and Multnomah counties. By 2017, almost half a million more people will live in this region, posing challenges for our transportation, housing and land use systems.



One of the most effective ways to protect the natural beauty and livability of our region is by planning for the future. That's exactly the focus of the 2040 Growth Concept, our region's strategy for managing growth. What does 2040 mean? It comes from the idea of planning 50 years ahead - starting from the year 1990.

Policies in the 2040 Growth Concept encourage

- 
- efficient use of land
  - protection of farmland and natural areas
  - a balanced transportation system
  - a healthy economy
  - diverse housing options.





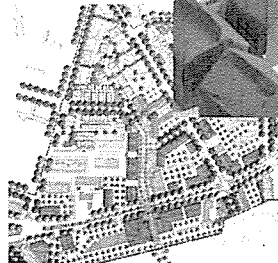
## 2040 Growth Concept

- ❖ 50-year vision for managing region's growth
- ❖ Incorporates best parts of "Concepts for Growth options"
- ❖ Builds on lessons learned from Portland's downtown plan



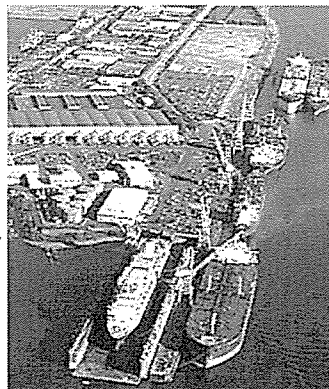
# Growth in Centers

- ❖ Compact urban centers built to human scale
- ❖ Mixed housing and commerce served with good transit
- ❖ Focus of civic activities and public services
- ❖ Parking ratios established

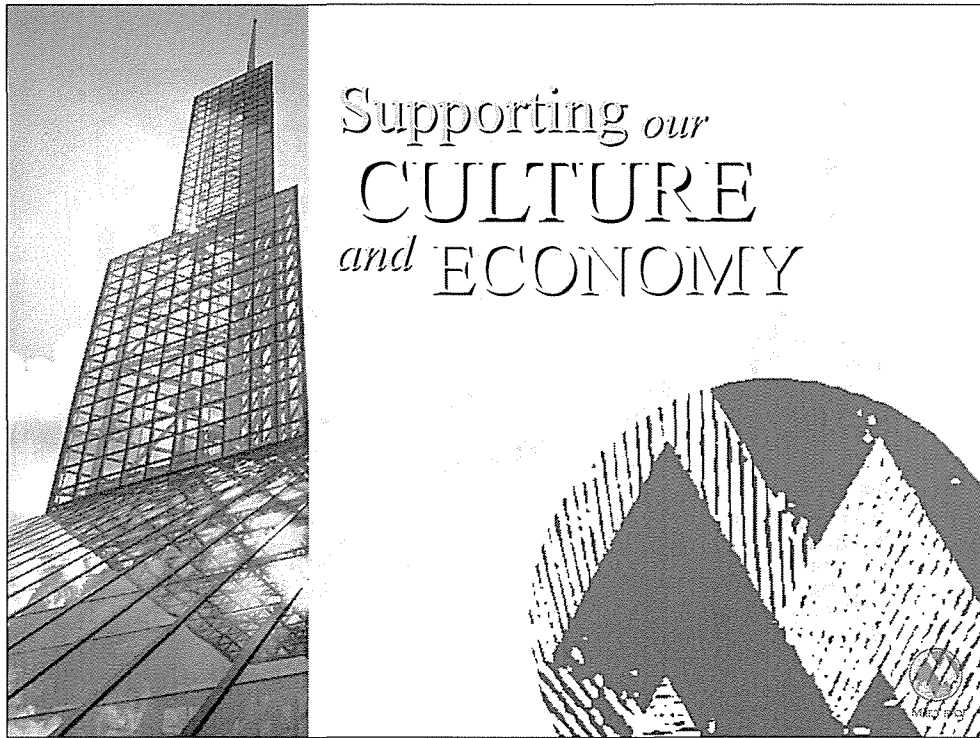


# Protect Industry

- ❖ Maintain freight mobility on highways
- ❖ Ensure quality freight access to ports and industrial areas from region's highway and rail network







44. (Do not read) Supporting our culture and economy

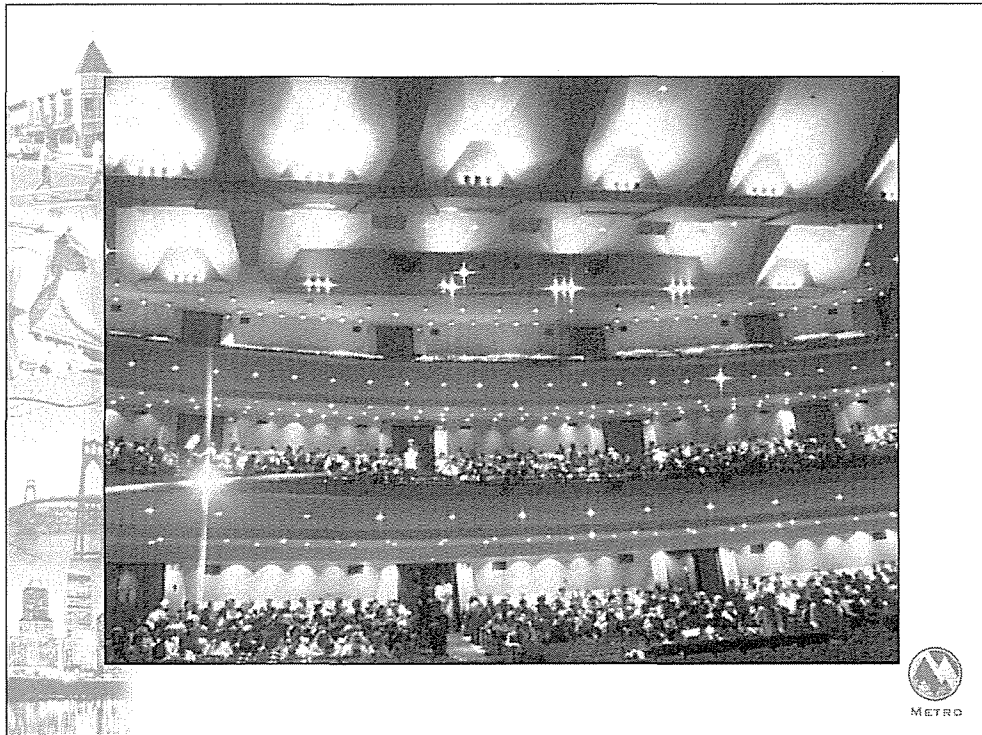
Read:

Each year, millions of people enjoy performances, trade shows, art exhibits and more at Metro's regional trade and spectator centers including:

\$400 mil/year

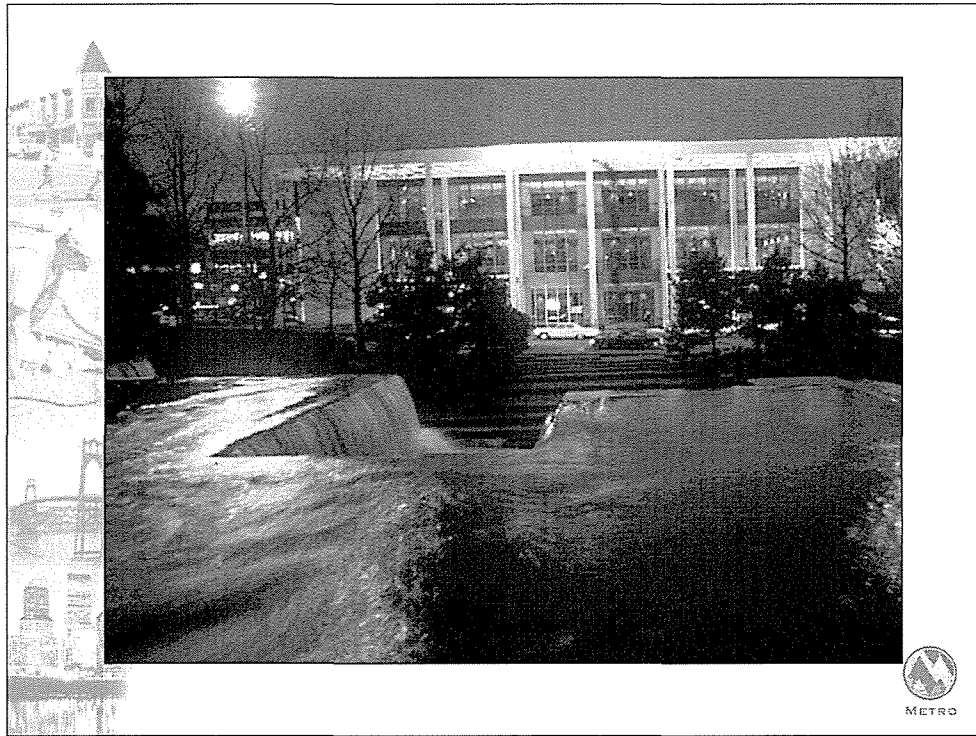


49. Newmark and Delores Winningstad theaters. Metro oversees operation of these centers through its Metropolitan-Exposition Recreation Commission.

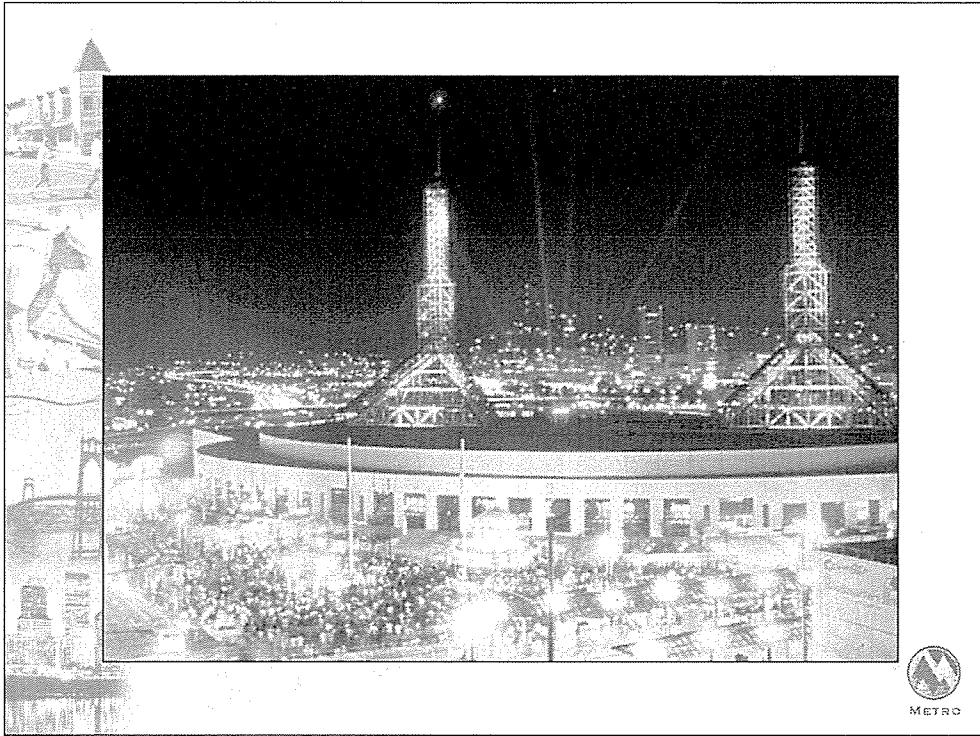


48. Arlene Schnitzer Concert Hall, also operated by Metro.





47. Keller Auditorium



45. The convention center



50. (Do not read) Providing a regional forum

Read:

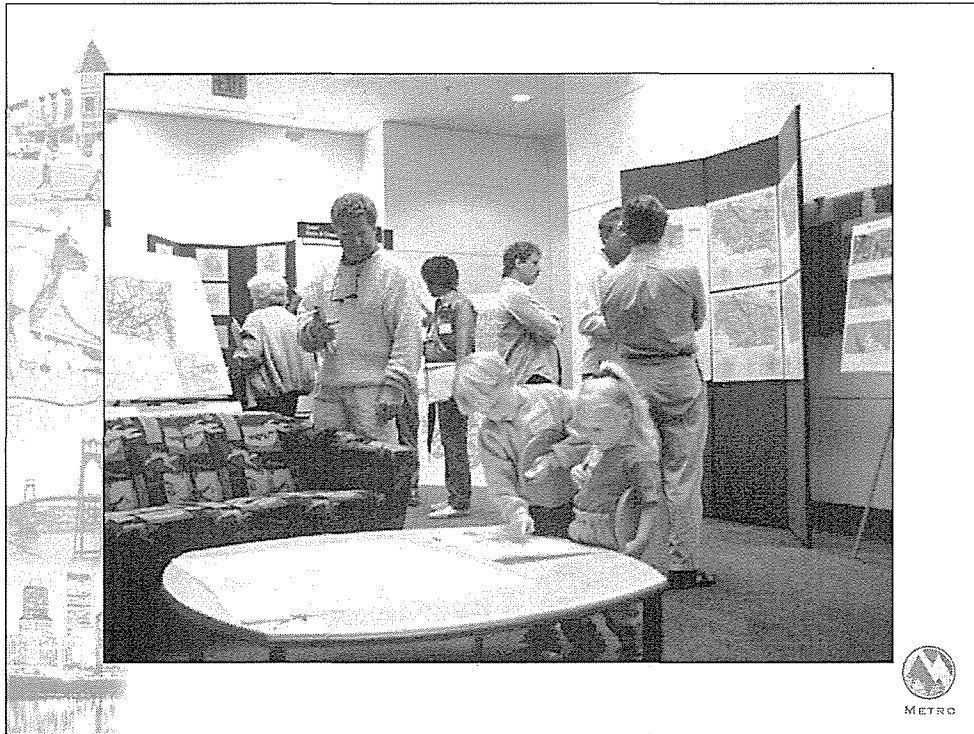
Open spaces, streams and forests don't stop at city limits or county lines.

Local decisions can have wide-ranging effects – especially when it comes to land-use and transportation. A traffic problem in Beaverton is a traffic problem in Portland. More efficient land use in downtown Gresham reduces the pressure to develop farmland in Hillsboro.



52. The Metro Council consists of six councilors elected by district. A Council President and Auditor are elected from the region as a whole. All are elected to 4-year terms. The council sets policy direction, passes legislation and approves the budget. More than a dozen advisory committees work on regional issues and develop policy recommendations for consideration by the Metro Council.





51. Metro brings metropolitan area cities, counties and citizens together to resolve the growth- related issues we share. By providing regional coordination and setting regional standards Metro helps cities and counties meet local needs and work together to benefit the region as a whole.



63. Join us at workshops about transportation studies, open space purchases and other issues,



# Travel Options

- ❖ All streets retrofitted to include sidewalks and bikeways
- ❖ Better-connected street systems that allow easier walking and access to transit
- ❖ Frequent transit service on all major streets



## Light Rail Opens

- ❖ Banfield light rail opens in late 1986, becoming the centerpiece of downtown plans in Portland and Gresham
- ❖ Westside light rail to Hillsboro begins in 1998
- ❖ Airport service begins in 2001
- ❖ Interstate light rail will begin Fall 2003



*Apr. 2004*

Metro is currently studying expanding light rail to the southern corridor along I-205 and the downtown transit mall, including PSU.



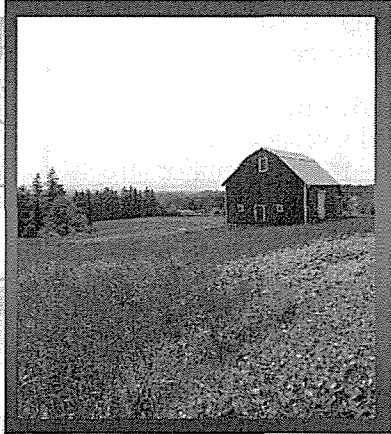


## **making it happen**

- ❖ **Priorities 2004-07 Update** currently underway to allocate \$41 million in regional funds
- ❖ **Regional Transportation Plan update in 2004;** sets 20-year priorities for transportation



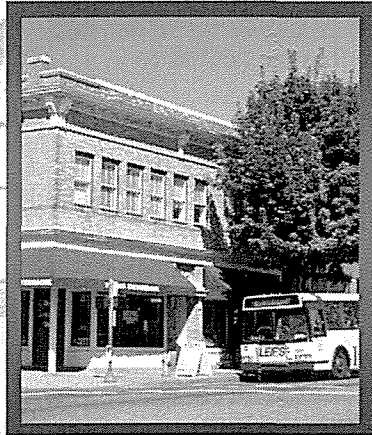
## 2040 Land Use and Transportation Principles



- Emphasize access to nature
- Maintain separation between neighboring communities
- “Green Corridors” along rural highways
- Protect rural economy from urban impacts



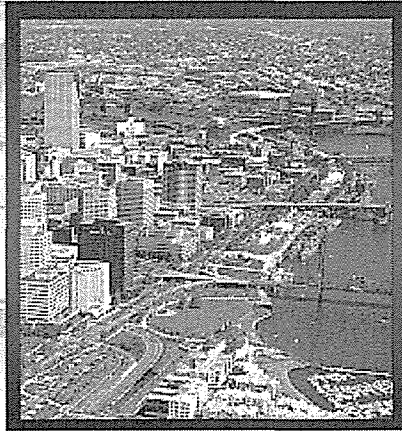
## 2040 Land Use and Transportation Principles



- Design streets for people, not just cars
- Provide interconnected local streets to reduce congestion on major streets
- Make bike travel feasible and safe
- Emphasize freight access to terminals



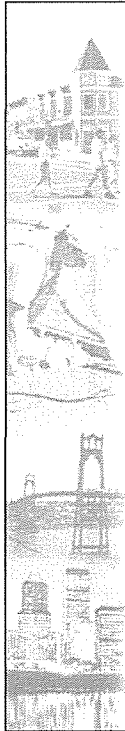
## 2040 Land Use and Transportation Principles:



- Maintain a compact region that contains sprawl and need for roads
- Develop transit and pedestrian oriented centers that reduce need surface parking
- Pursue Jobs/Housing Balance







**[www.metro-region.org](http://www.metro-region.org)**

**Rod Monroe  
Metro Councilor**

600 NE Grand Avenue  
Portland, Oregon 97232  
(503) 797-1552

**[monroer@metro.dst.or.us](mailto:monroer@metro.dst.or.us)**



Invite questions from the audience: ????

Thank you for inviting me to address your group. Please feel free to contact me at the council office if you have questions, suggestions, or concerns.

2003?  
vld  
4/24/12

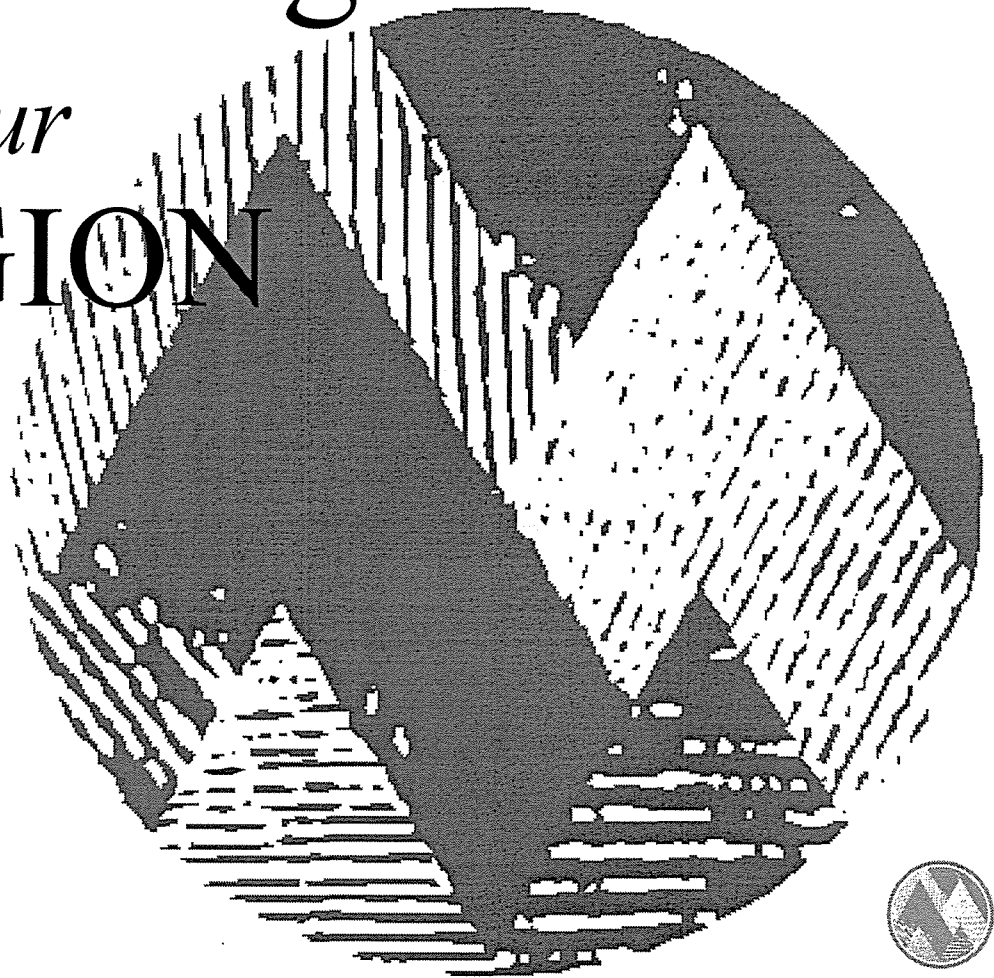
ARW

# Metro:

## Protecting

*our*

## REGION



METRO

# What is Metro?

- ❖ Elected regional government
- ❖ *add* Manages growth, transportation, regional parks and solid waste
- ❖ Serves as MPO for Portland region
- ❖ Allocates federal transportation funds to 24 cities and 3 counties



# Portland Metro Region

## Population Base

- 1.3 Million people within Metro boundary (37% of the state)
- 1.7 million people in the larger region (including Clark County, Washington)
- 512,400 people in the City of Portland
- 24 smaller cities (615 to 85,000 people each)

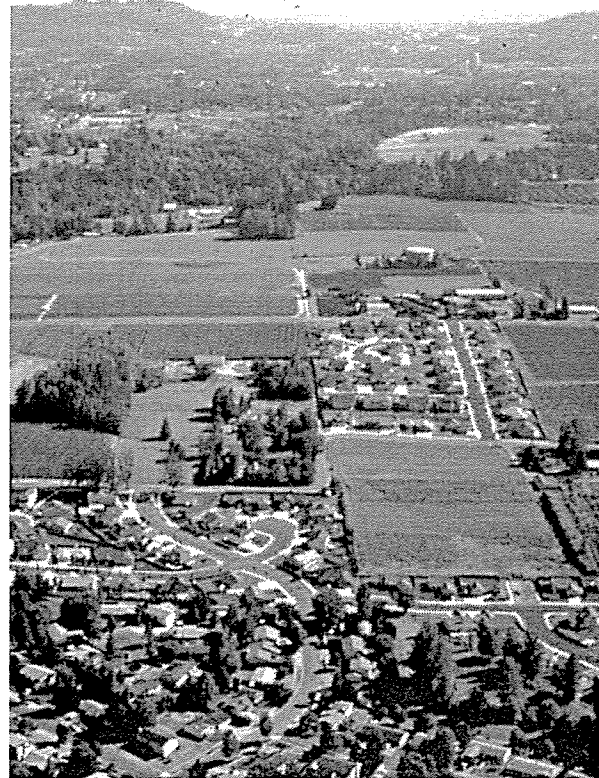
## Major Economic Trends

- Growing Industries
  - Hi-tech
  - Metals
  - Transport equipment
  - Printing
  - Retail & Service sector
- Declining Industries
  - Lumber/wood
  - Paper
  - Food processing



# Protect Rural Areas

- ❖ Create Green Corridors along rural state highways
- ❖ Mitigate urban overflow on rural routes
- ❖ Maintain rural separation between Metro region and neighbor cities



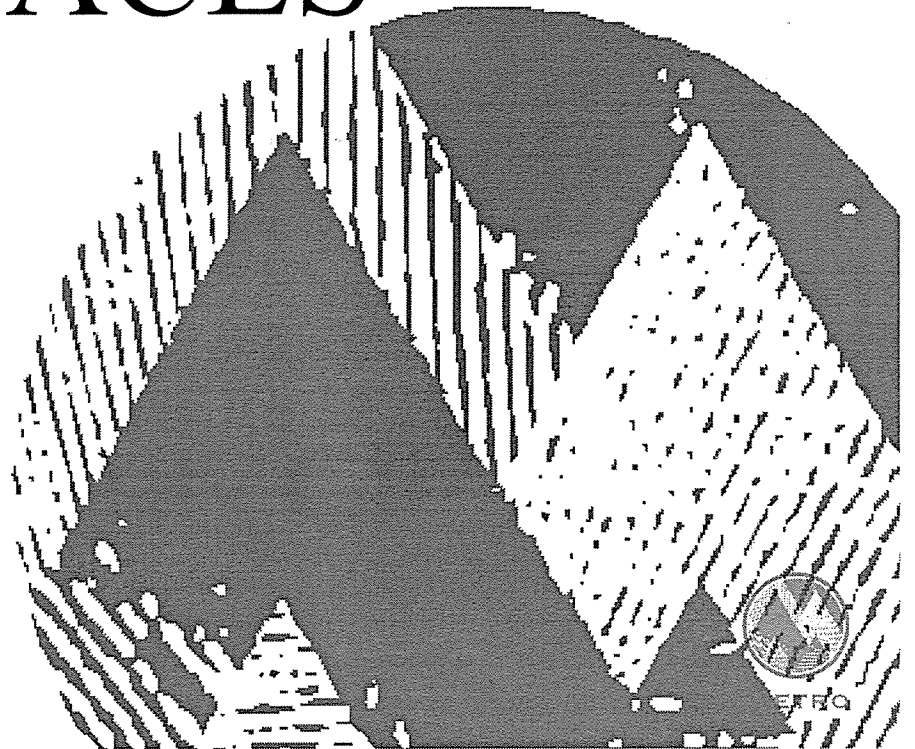
# Nature in the City

- ❖ Network of parks, trails and open spaces
- ❖ Protections for streams and upland natural areas
- ❖ Reduce quantity and improve quality of runoff
- ❖ Manage hazardous waste to protect streams and groundwater



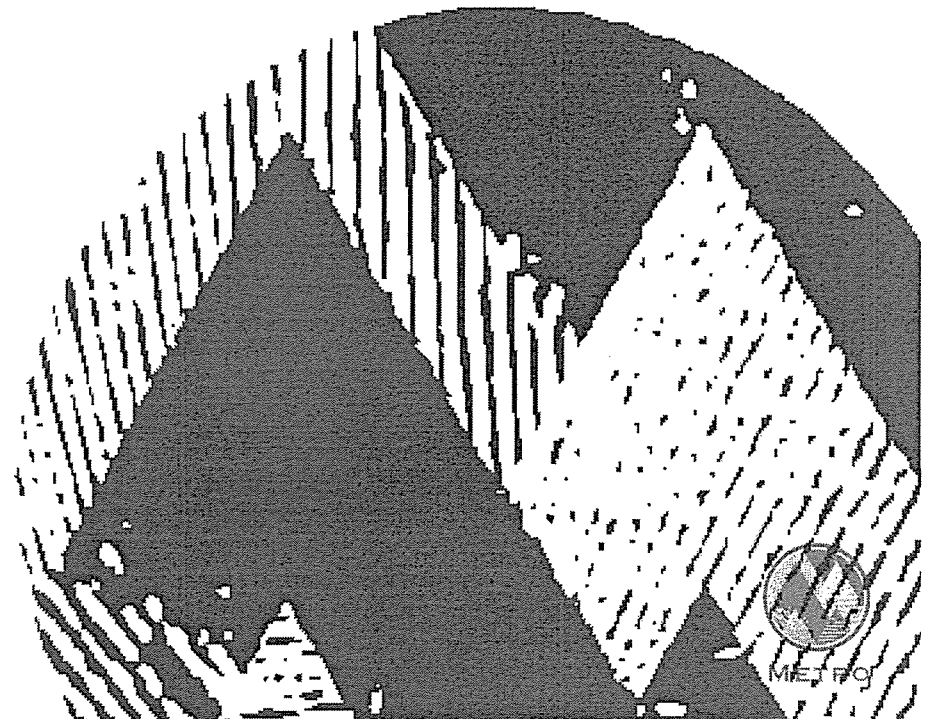


# Protecting *our* STREAMS *and* OPEN SPACES

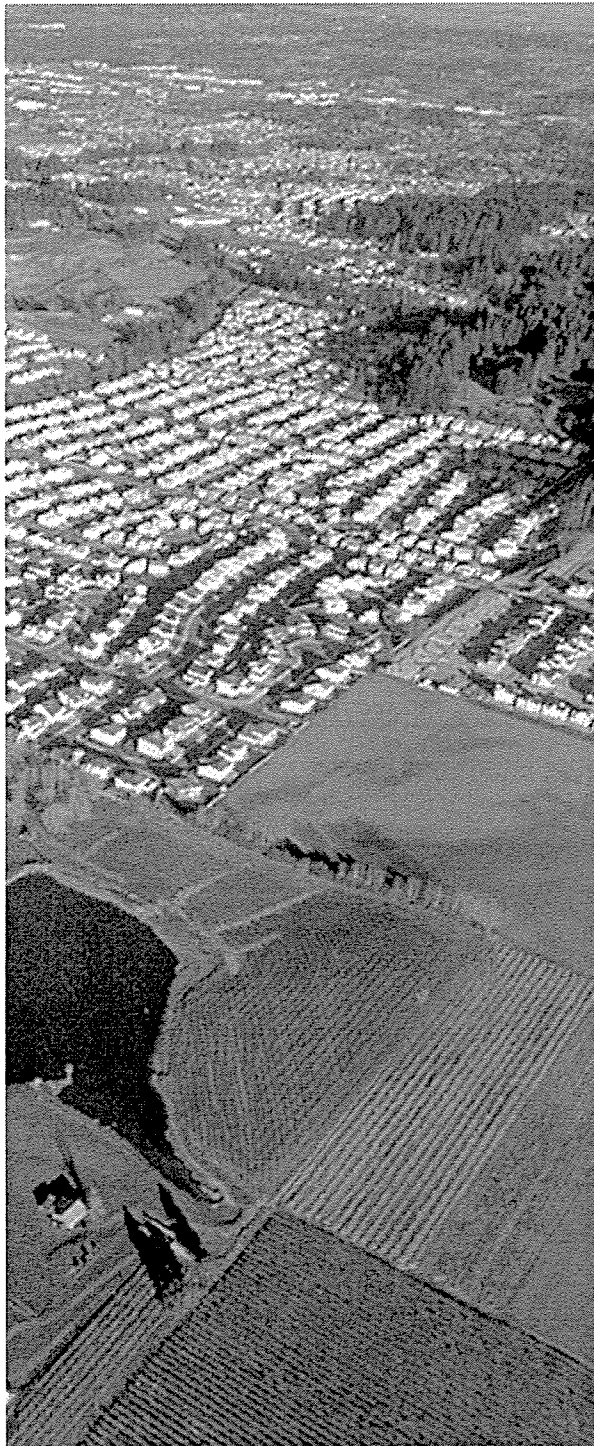




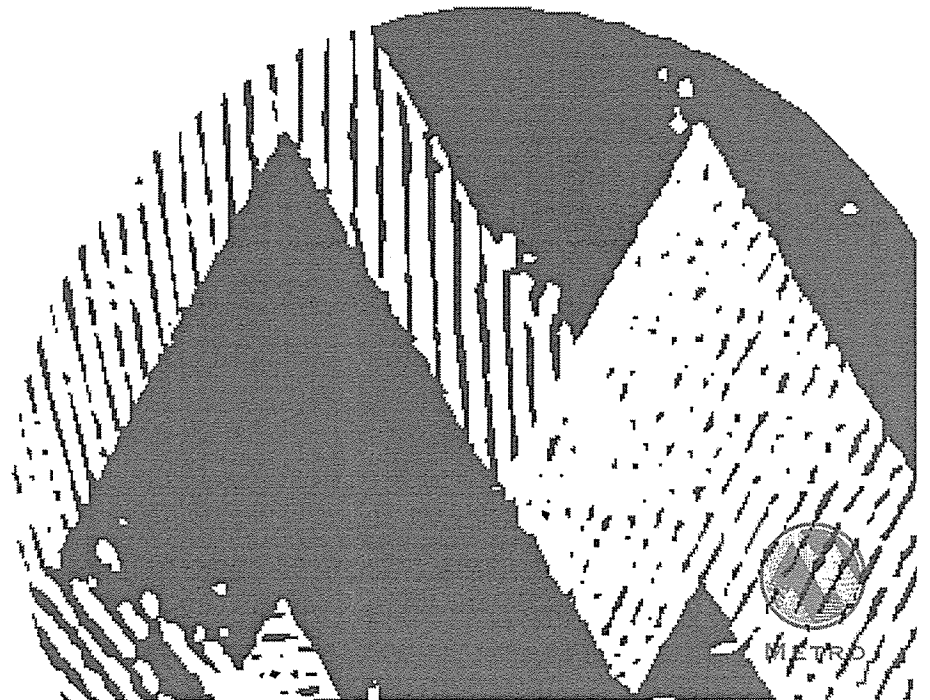
# Recycling *and* REDUCING WASTE







“It’s better *to*  
PLAN  
*for* growth than  
IGNORE IT”





# 2040 Growth Concept



## 2040 Premise:

*Changing our land use patterns and transportation systems produces both better communities and mobility*



METRO

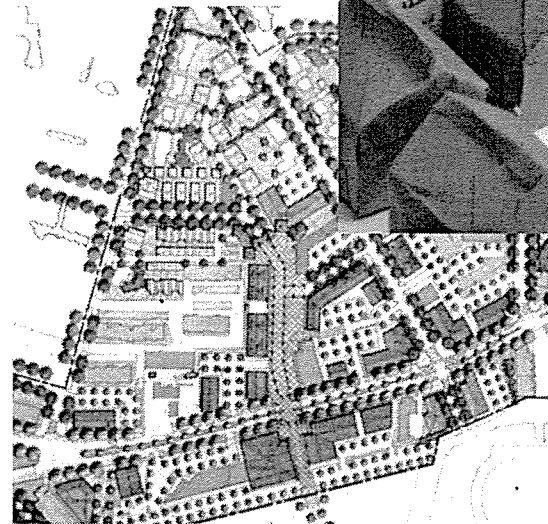
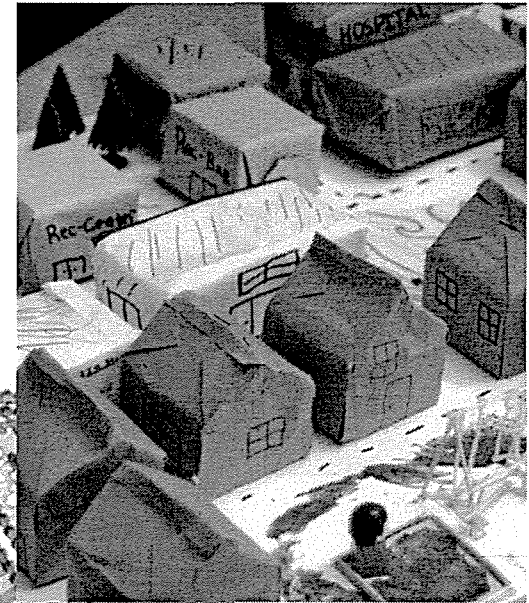
# 2040 Growth Concept

- ❖ 50-year vision for managing region's growth
- ❖ Incorporates best parts of "Concepts for Growth options"
- ❖ Builds on lessons learned from Portland's downtown plan



# Growth in Centers

- ❖ Compact urban centers built to human scale
- ❖ Mixed housing and commerce served with good transit
- ❖ Focus of civic activities and public services
- ❖ Parking ratios established



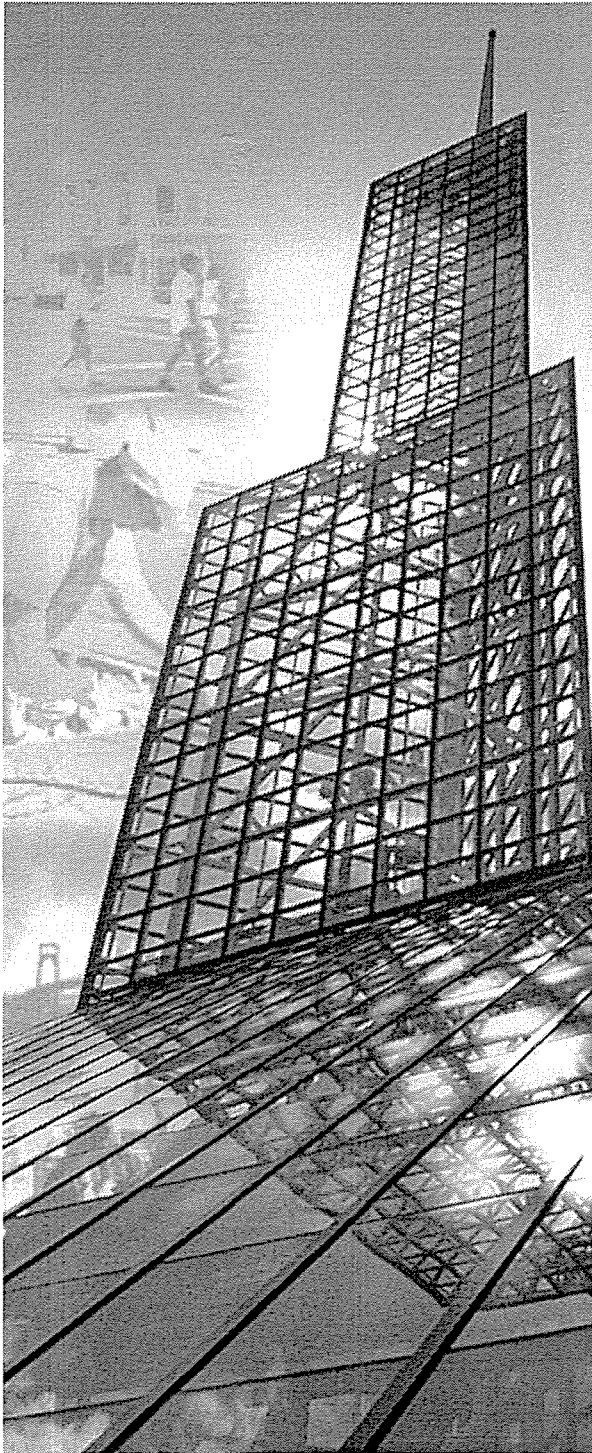
METRO



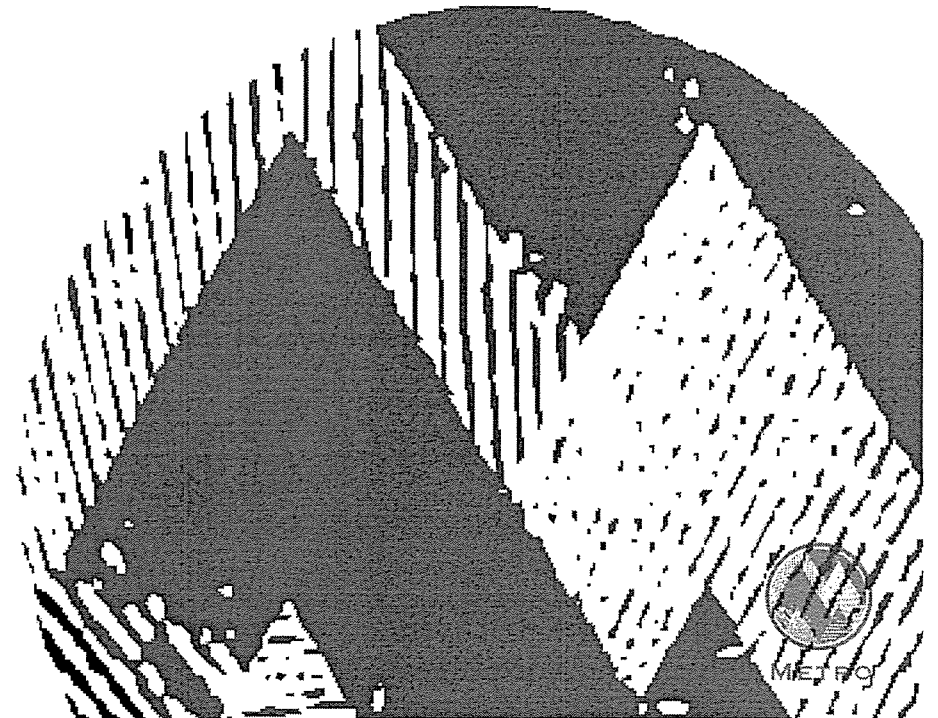
# Protect Industry

- ❖ **Maintain freight mobility on highways**
- ❖ **Ensure quality freight access to ports and industrial areas from region's highway and rail network**





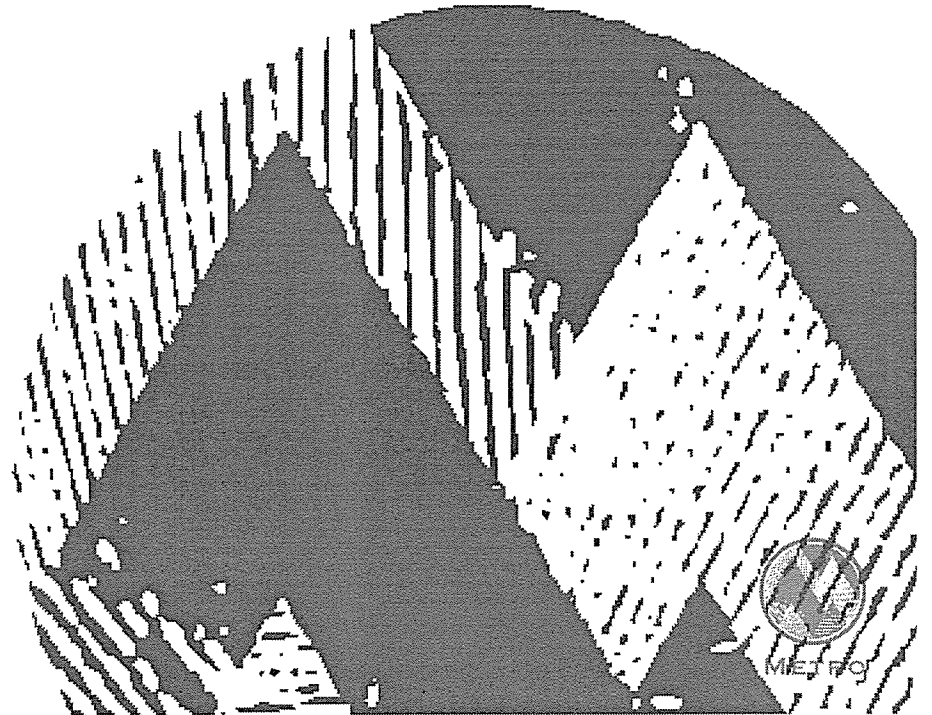
Supporting *our*  
CULTURE  
*and* ECONOMY







# Providing *a* REGIONAL FORUM



# Travel Options

- ❖ All streets retrofitted to include sidewalks and bikeways
- ❖ Better-connected street systems that allow easier walking and access to transit
- ❖ Frequent transit service on all major streets



# Light Rail Opens

- ❖ Banfield light rail opens in late 1986, becoming the centerpiece of downtown plans in Portland and Gresham
- ❖ Westside light rail to Hillsboro begins in 1998
- ❖ Airport service begins in 2001
- ❖ Interstate light rail will begin May 2004

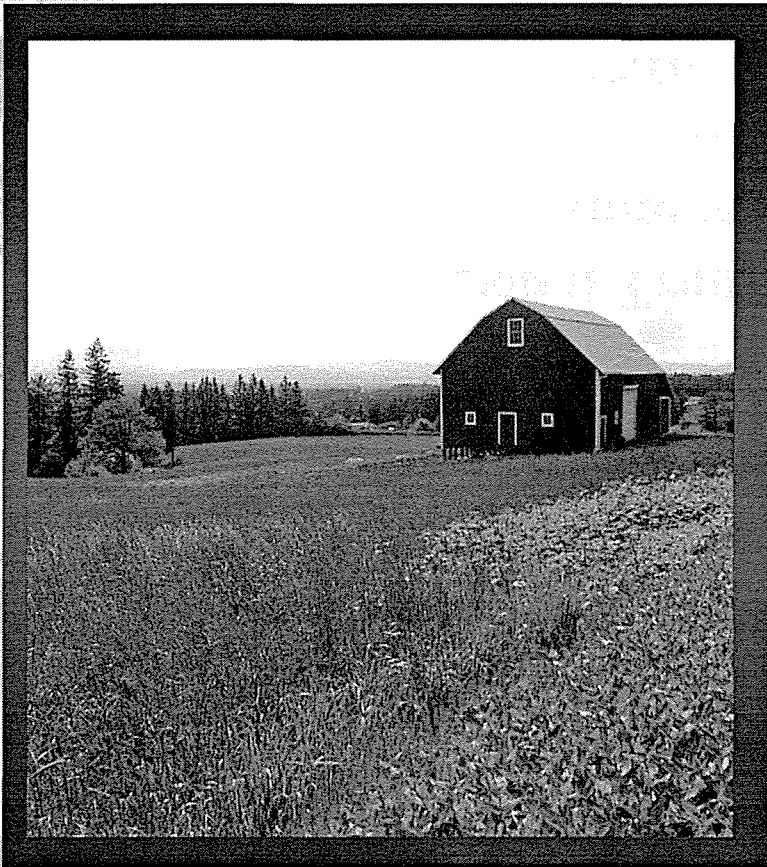


# Making it happen

- ❖ **Priorities 2004-07 Update currently underway to allocate \$41 million in regional funds**
- ❖ **Regional Transportation Plan update in 2004; sets 20-year priorities for transportation**



# 2040 Land Use and Transportation Principles



- Emphasize access to nature
- Maintain separation between neighboring communities
- “Green Corridors” along rural highways
- Protect rural economy from urban impacts

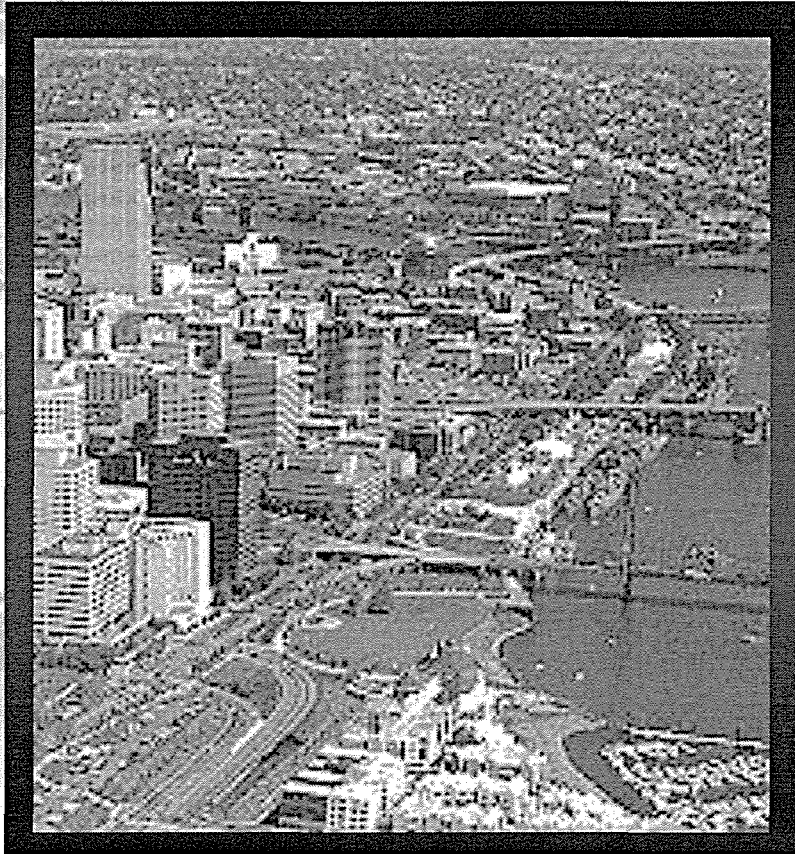


# 2040 Land Use and Transportation Principles

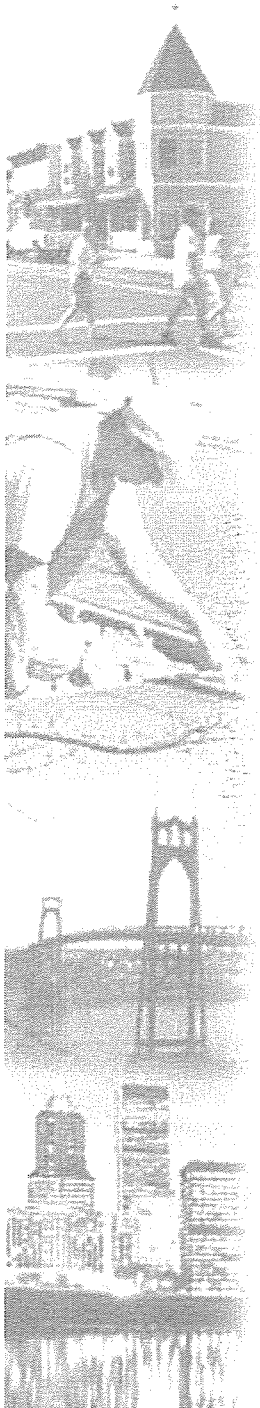


- Design streets for people, not just cars
- Provide interconnected local streets to reduce congestion on major streets
- Make bike travel feasible and safe
- Emphasize freight access to terminals

# 2040 Land Use and Transportation Principles:



- Maintain a compact region that contains sprawl and need for roads
- Develop transit and pedestrian oriented centers that reduce need surface parking
- Pursue Jobs/Housing Balance



**[www.metro-region.org](http://www.metro-region.org)**


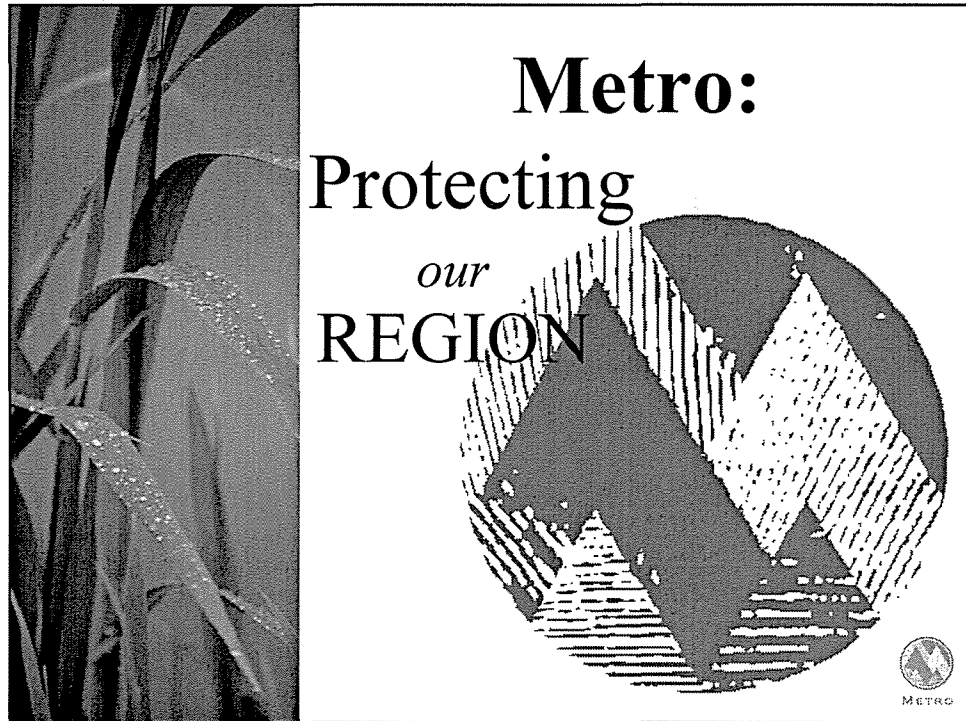
**Rod Park  
Metro Councilor**

**600 NE Grand Avenue  
Portland, Oregon 97232  
(503) 797-1547**

**[parkr@metro.dst.or.us](mailto:parkr@metro.dst.or.us)**




**METRO**



## What is Metro?

- ❖ Elected regional government
- ❖ Manages growth, transportation, regional parks and solid waste
- ❖ Serves as MPO for Portland region
- ❖ Allocates federal transportation funds to 24 cities and 3 counties



METRO

# Portland Metro Region

## Population Base

- 1.3 Million people within Metro boundary (37% of the state)
- 1.7 million people in the larger region (including Clark County, Washington)
- 512,400 people in the City of Portland
- 24 smaller cities (615 to 85,000 people each)

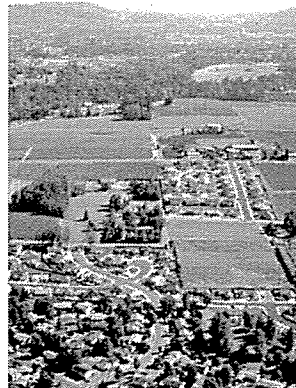
## Major Economic Trends

- Growing Industries
  - Hi-tech
  - Metals
  - Transport equipment
  - Printing
  - Retail & Service sector
- Declining Industries
  - Lumber/wood
  - Paper
  - Food processing

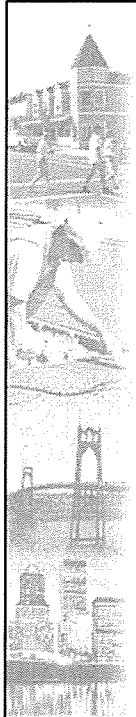


# Protect Rural Areas

- ❖ Create Green Corridors along rural state highways
- ❖ Mitigate urban overflow on rural routes
- ❖ Maintain rural separation between Metro region and neighbor cities









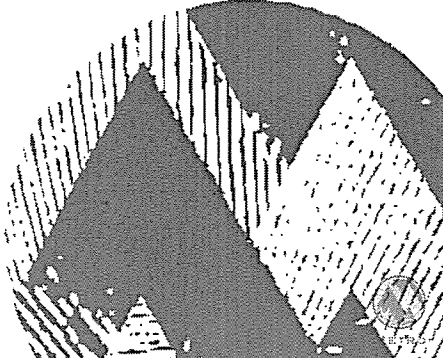


## Nature in the City

- ❖ Network of parks, trails and open spaces
- ❖ Protections for streams and upland natural areas
- ❖ Reduce quantity and improve quality of runoff
- ❖ Manage hazardous waste to protect streams and groundwater

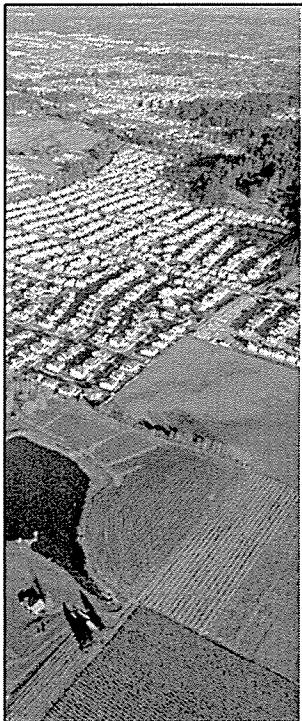
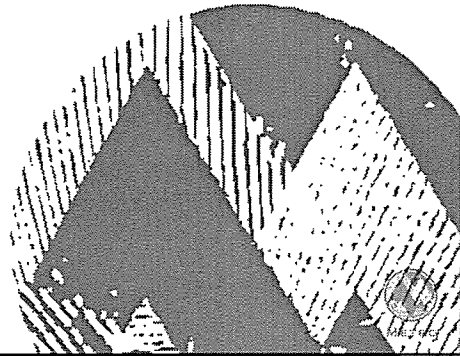


## Protecting *our* STREAMS *and* OPEN SPACES

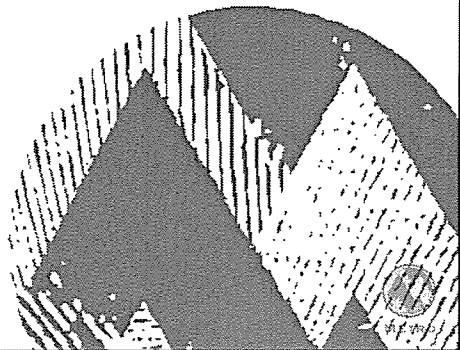




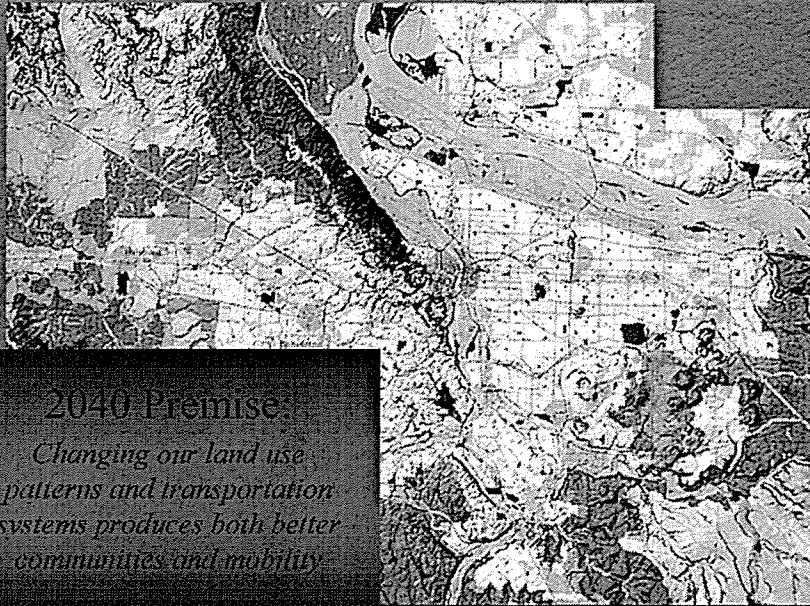
Recycling *and*  
**REDUCING**  
**WASTE**



“It’s better *to*  
**PLAN**  
*for* growth than  
**IGNORE IT”**



## 2040 Growth Concept



### 2040 Premise:

*Changing our land use patterns and transportation systems produces both better communities and mobility*



## 2040 Growth Concept

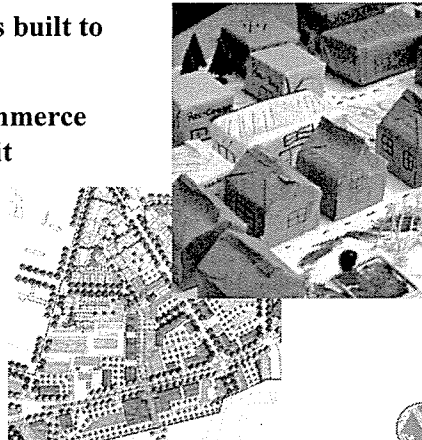
- ❖ 50-year vision for managing region's growth
- ❖ Incorporates best parts of "Concepts for Growth options"
- ❖ Builds on lessons learned from Portland's downtown plan





## Growth in Centers

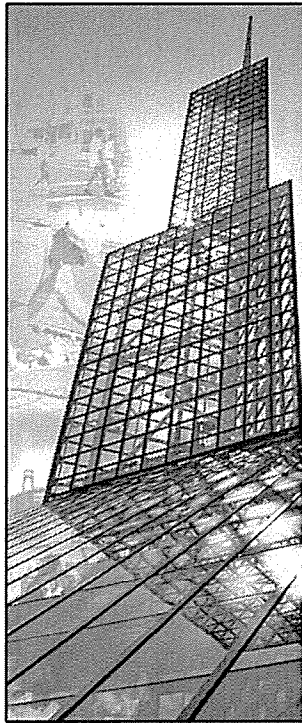
- ❖ Compact urban centers built to human scale
- ❖ Mixed housing and commerce served with good transit
- ❖ Focus of civic activities and public services
- ❖ Parking ratios established



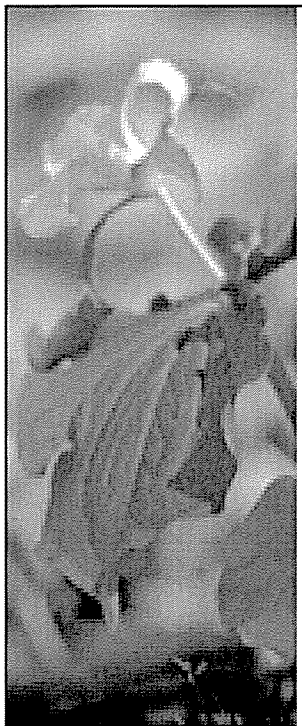
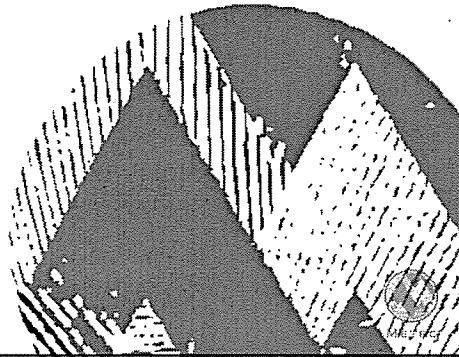
## Protect Industry

- ❖ Maintain freight mobility on highways
- ❖ Ensure quality freight access to ports and industrial areas from region's highway and rail network

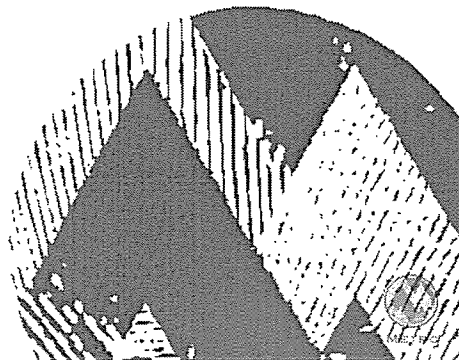




Supporting *our*  
**CULTURE**  
*and* **ECONOMY**



Providing *a*  
**REGIONAL**  
**FORUM**







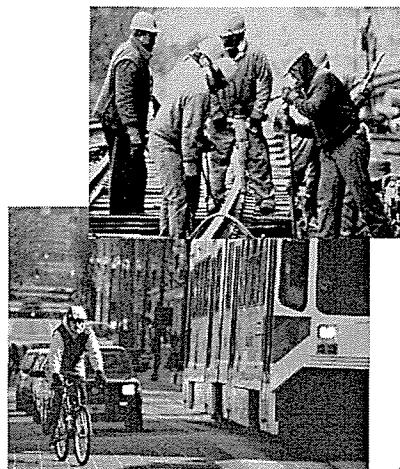
## Travel Options

- ❖ All streets retrofitted to include sidewalks and bikeways
- ❖ Better-connected street systems that allow easier walking and access to transit
- ❖ Frequent transit service on all major streets



## Light Rail Opens

- ❖ Banfield light rail opens in late 1986, becoming the centerpiece of downtown plans in Portland and Gresham
- ❖ Westside light rail to Hillsboro begins in 1998
- ❖ Airport service begins in 2001
- ❖ Interstate light rail will begin May 2004

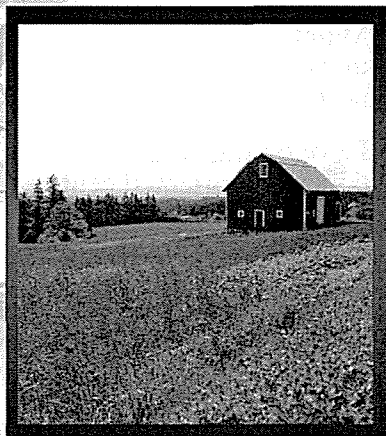


## Making it happen

- ❖ **Priorities 2004-07 Update** currently underway to allocate \$41 million in regional funds
- ❖ **Regional Transportation Plan update in 2004;** sets 20-year priorities for transportation



## 2040 Land Use and Transportation Principles



- Emphasize access to nature
- Maintain separation between neighboring communities
- “Green Corridors” along rural highways
- Protect rural economy from urban impacts



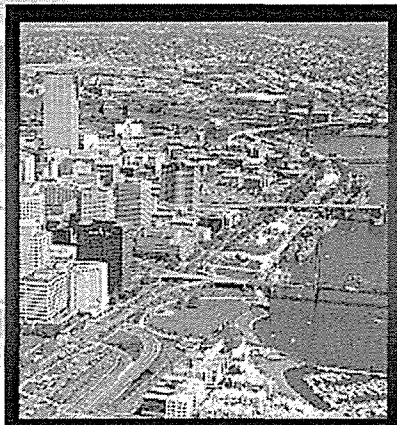
## 2040 Land Use and Transportation Principles



- Design streets for people, not just cars
- Provide interconnected local streets to reduce congestion on major streets
- Make bike travel feasible and safe
- Emphasize freight access to terminals



## 2040 Land Use and Transportation Principles:



- Maintain a compact region that contains sprawl and need for roads
- Develop transit and pedestrian oriented centers that reduce need surface parking
- Pursue Jobs/Housing Balance





**[www.metro-region.org](http://www.metro-region.org)**

**Rod Park  
Metro Councilor**

**600 NE Grand Avenue  
Portland, Oregon 97232  
(503) 797-1547**

**[parkr@metro.dst.or.us](mailto:parkr@metro.dst.or.us)**

