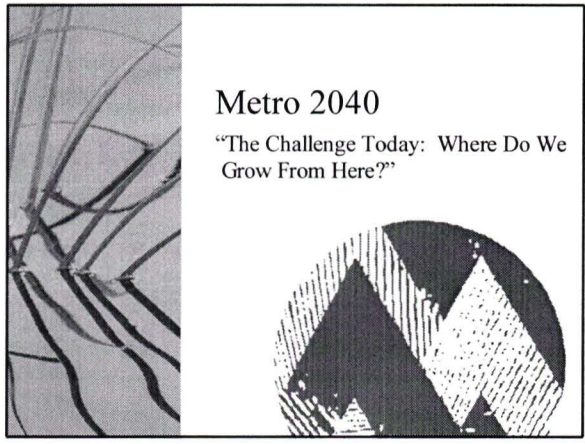



2004?
vld
4/24/12




Metro 2040
"The Challenge Today: Where Do We Grow From Here?"

What is Metro?

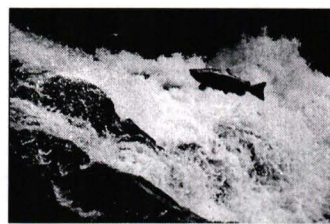
- Voters created Metro in 1979
- Serves 1.3 million people, 25 cities and 3 counties in the Portland metropolitan area
- Metro officials are directly elected by voters
- Manages growth, transportation, regional parks, solid waste, and regional facilities



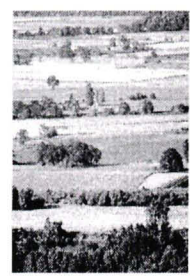
Can we keep our economy healthy?




and protect fish and wildlife habitat . . .



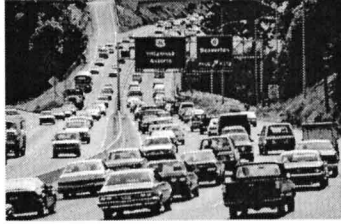
. . . and farmland and forests?



Can we have affordable housing choices . . .



... while avoiding long commutes?



Can we live near where we work, play and shop?



Or do we want to?



How do we pay for infrastructure?



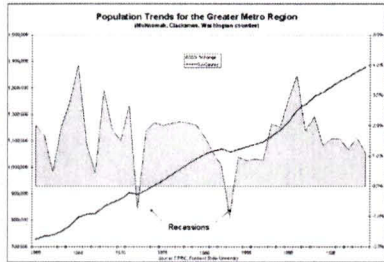
Should we guide growth to new communities ...



... Or to existing ones?



Is it better to plan for growth or ignore it?
The challenge today.



Question to the class...

Is it better to plan for growth
or ignore it?

How we got here...

Oregon's history of planning



... We are in dire need of a state land use policy, new subdivision laws, and new standards for planning and zoning ... we must respect another truism: That unlimited and unregulated growth leads inexorably to a lowered quality of life."

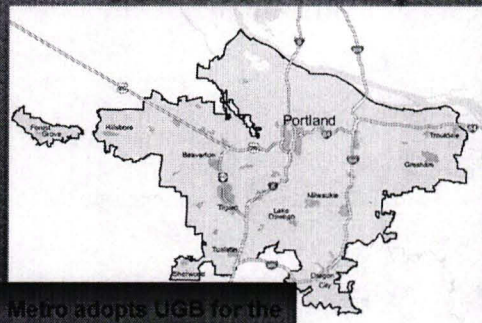
*Governor Tom McCall's opening address to the Legislature
January 8, 1973*

History of Planning...
Good or Bad?



- Downtown Plan
- Columbia Corridor
- Washington County high-tech
- Interstate system
- Transit investments
MAX and transit mall

Urban Growth Boundary



Metro adopts UGB for the
Portland Region in 1979.

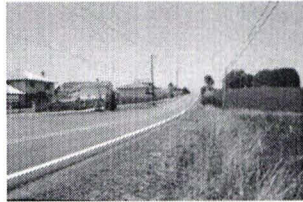


Early 1990s

It was time to make a choice

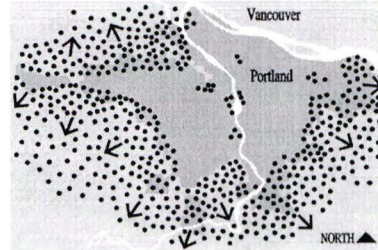
Expand the UGB to allow current patterns to continue . . .

. . . or make a change



What happens with no change?

Base case - continuing the 1990 pattern



Options for change

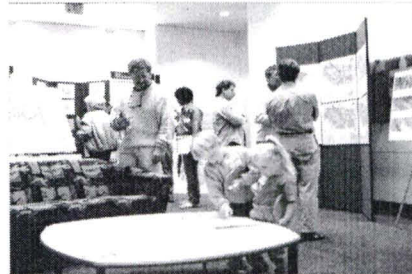


Concept A - growing out

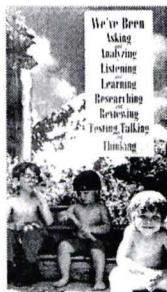
Concept B - growing up

Concept C - neighboring cities

Residents shape the final strategy



Making the tough choices



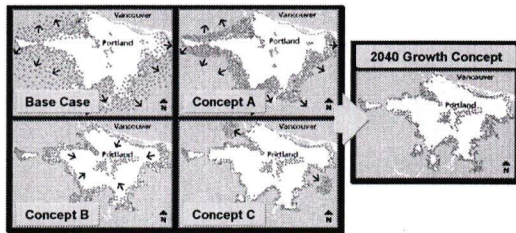
Long-range planning questionnaire sent to every household in the region

Finding the balance

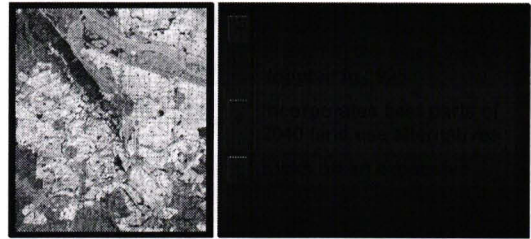
Region 2040 Adoption: 1995



Concepts for growth



2040 Growth Concept



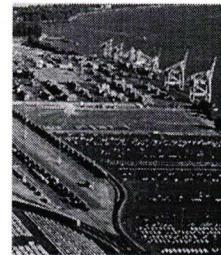
2040 Elements Commercial and cultural hubs

- Central city – downtown Portland
- Regional centers
- Town centers

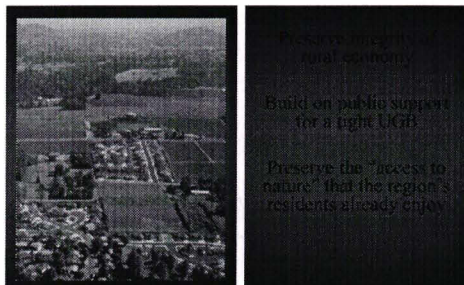


2040 Elements Protecting economic vitality

- Industrial areas
- Freight terminals
- Airports



2040 Elements: Protected Rural Reserves



Urban Growth Boundary Expansion

- ✓ 1998 – 3500 acres for 23,000 housing units and 14,000 jobs
- ✓ 1999 – 380 acres “subregional need”
- ✓ 2002 – 18,638 acres to provide 38,657 housing units and 2,671 acres for jobs
- ✓ 2004 – 1900 acres for industrial use

Let the voters decide...

In 2002, two opposing ballot measures were introduced:

- Ballot measure, introduced by Oregonians in Action, 26-11 would have prohibited Metro from assigning minimum densities to jurisdictions within its boundaries.
- 26-29 was introduced by the Metro Council preserved Metro's ability to increase density in town centers and corridors.
- 26-29 passed, 26-11 failed.

Question to the class...

Could Metro have adopted a better plan?

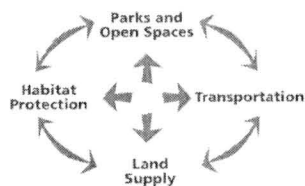
The challenge today...

The challenge today



- Continued Growth
 - Population/Jobs
 - Travel/Freight
- 20-year land supply
- Endangered species
- Environment
- Economy
- A new generation
 - Public
 - Elected officials

The challenge today



Where do we grow from here?

Recent survey results say...

- 67% of Oregonians believe protecting the rights of property owners is important.
- 64% of Oregonians believe protecting farmland is very important.
- 58% believe protecting wildlife habitat is important.

Recent survey results say...

- 69% of Oregonians say that growth management has made the state a more desirable place to live.
- 52% of Oregonians are more likely to side with the right of landowners to reasonable use their property. 44% of Oregonians believes that reasonable land use planning serves the public good.

Transportation Challenge: Impacts on business in 2020 without modifications



increased costs for employees and freight

Typical truck trips take 11 minutes longer in 2020

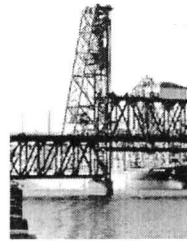
the same trucks will make 20% fewer deliveries per day

The challenge today Transportation



- Regional Transportation Plan
 - August 2000 adoption
 - 693 projects
 - \$8 billion cost
 - Implements 2040
 - Multi-modal
 - Connected systems
 - Efficient/safe
 - Integrated with land use

The challenge today Transportation



Implementing the RTP

- Public/private partners
- Regional Business Alliance on Transportation (RBAT)
- Innovative finance approaches
- Focused, short-term action plan

The challenge today Natural resources



Natural Resources Goal:
Cooperative, inter-connected regional system of parks, natural areas, trails and greenways for fish, wildlife and people.

The challenge today Natural resources



Natural resource toolbox

- Open space acquisition
- Environmental education
- Habitat restoration
- Volunteer stewardship
- Regulation
- "Green Ribbon" Commitment

The challenge today

Natural resources



Implements State Goal 5:
Fish and Wildlife Habitat
Protection

Process

- Science
- Data Collection
- Inventory/Significance
Determination

The challenge today

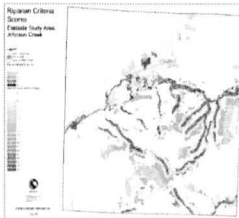
Natural resources

Economic, social, environmental and energy (ESEE) Analysis:

- Determined the economic, social,
environmental, and energy tradeoffs of
allowing, limiting, or prohibiting activities that
harm fish and wildlife habitat.

The challenge today

Natural resources

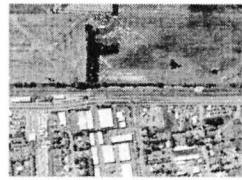


Process (continued)-

- ESEE analysis
- Program development
 - Acquisition
 - Stewardship
 - Regulatory
 - Incentive
 - Exceptions
- Decision late 2002

The challenge today

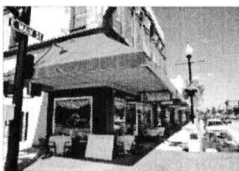
20-year Land Supply



- State "Periodic Review"
of Urban Growth
Boundary (UGB)
- Addresses jobs/housing
- Develop a 2022 Forecast
(demand)
- Supply to 2022

The challenge today

20-year Land Supply



Key Issues:

- 2040 Centers
- Employment/Industrial
Lands
- Complete Communities
- Jobs/Housing Balance

Program Adoption Late 2002

- How much UGB
expansion
- Where to expand

State Law: ORS 197.296

- Passed in 1995, this law requires many
Oregon cities to include a 20-year supply of
residential land within their urban growth
boundaries.
- Created a hierarchy of lands to help cities
decide where to develop:
 - Urban reserves
 - Exception lands
 - Worst farmland
 - Best farmland



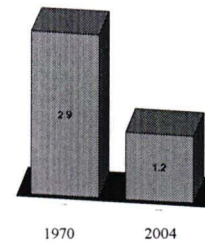
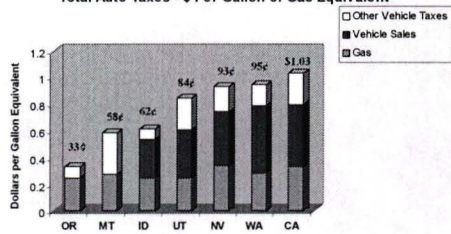
Question to the class...

Can we maintain a healthy economy and accommodate travel while we protect fish and wildlife habitat and preserve open space and farmland?

Metro

Councilor Rod Park
District 1
503-797-1547
Parkr@metro.dst.or.us

Total Auto Taxes - \$ Per Gallon of Gas Equivalent



Tax Revenues by Vehicle Miles
(Measured in cents)