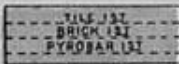
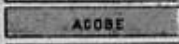


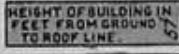
# KEY



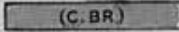
Fire proof construction.  
(OR FIRE RESISTIVE CONST'N)



Adobe building.



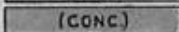
Stone building.



Concrete, lime, cinder or cement brick.



Hollow concrete or cement block const'n.



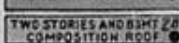
Concrete or reinforced concrete const'n.



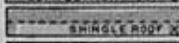
Tile building.



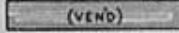
Brick building with frame cornice.



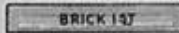
" " " stone front.



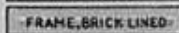
" " " frame side.



Brick veneered building.



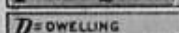
" and frame building.



Frame building, brick lined.



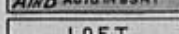
" " metal clad.



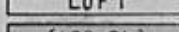
Frame building.



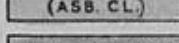
Iron building.



Tenant building occupied by various manufacturing or occupancies.



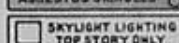
Frame building covered with asbestos.



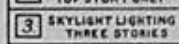
Brick building with brick or metal cornice.



Fire wall 6 inches above roof.



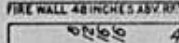
Wall without opening and size in inches.



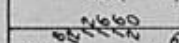
Wall with openings on floors as designated.



Opening with single iron or tin clad door.



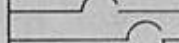
" " double iron " " " doors.



" " standard fire doors.



Openings with wired glass doors.



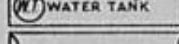
Drive or passage way.



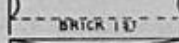
Stable.



Auto house or private garage.



Solid brick with interior walls of C.B. or C.B. and brick mixed.



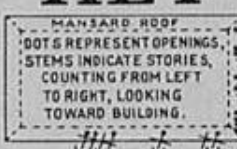
Mixed construction of C.B. and brick with one wall of solid brick.



Mixed construction of C.B. and brick with one wall faced with 4" brick.



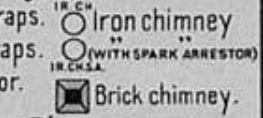
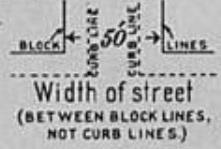
Mixed construction of C.B. and brick throughout.



Window opening in first story.  
Window openings in second and third stories.  
Window openings in second and fourth stories.  
Windows with wired glass.  
Windows with iron or tin clad shutters.  
Window openings tenth to twenty-second stories.



- [E] Open elevator.
- [FE] Frame enclosed elevator.
- [ET] " " " with traps.
- [ESC] " " " self closing traps.
- [CBET] Concrete block enclosed elevator with traps.
- [TESC] Tile enclosed elevator with self closing traps.
- [BE] Brick enclosed elev. with wired glass door.



(15) Ground elevation.

5 Block number.

UPB. Vertical steam boiler.

GT. Gasoline tank.

○ V.P. Vertical pipe or stand pipe.

(O.U.) Open under.

AFA Automatic fire alarm.

Siamese fire dept. connection.

IEP Independent electric plant.

Single fire dept. connection.

AS Automatic sprinklers.

ACS Automatic chemical sprinklers.

AS Automatic sprinklers in part of building only. (NOTE UNDER SYMBOL INDICATES PROTECTED PORTION OF BUILDING)

1ST ONLY  
NS Not sprinklered.

24 Reference to adjoining page.

Outside vertical pipe on fire escape.

+ Fire engine house, as shown on key map.

FA Fire alarm box.

● Fire pump.

● Single hydrant.

(36) Under page number refers to corresponding page of previous edition.

D.H. Double " "

T.H. Triple " "

Q.H. Quadruple hydrant of the "High Pressure Fire Service".

H.P.F.S. Fire alarm box of the "High Pressure Fire Service".

H.P.F.S. 20" W. PIPE (H.P.S.) Water pipes of the "High Pressure Fire Service" and hydrants of the "High Pressure Fire Service" as shown on key map.

6" W. PIPE Water pipes and size in inches.

5" W. PIPE (PRIVATE) Water pipes of private supply.

2 House numbers shown nearest to buildings are official or actually up on buildings.

○ Old house numbers shown furthest from buildings.

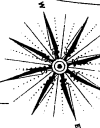
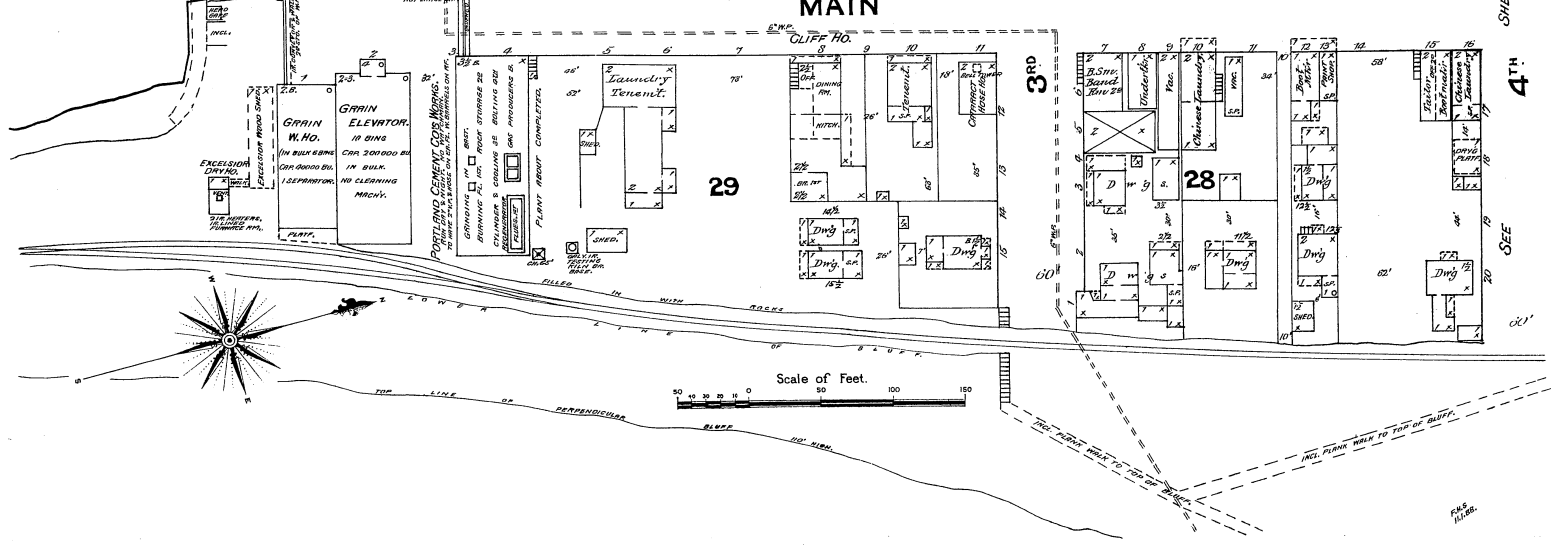
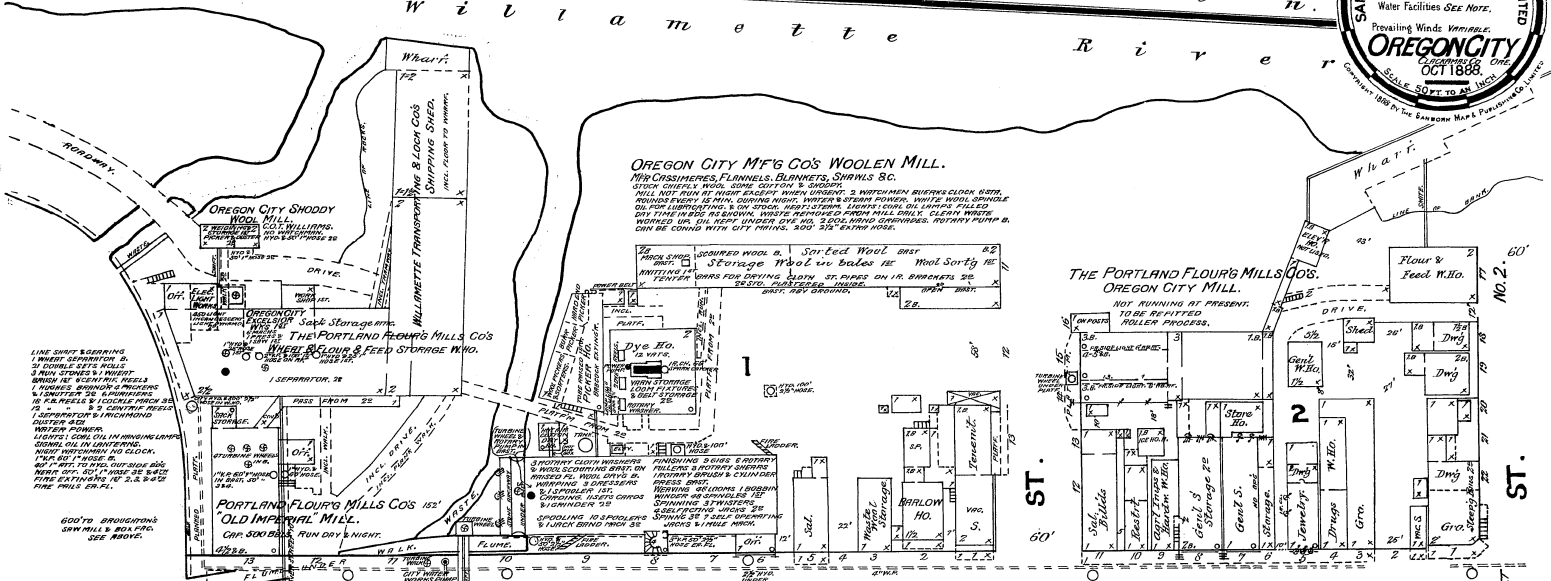
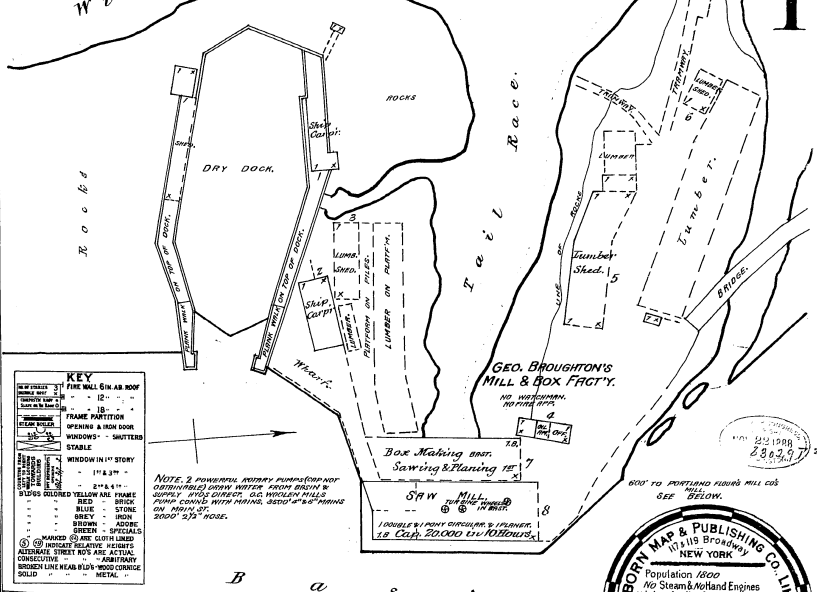
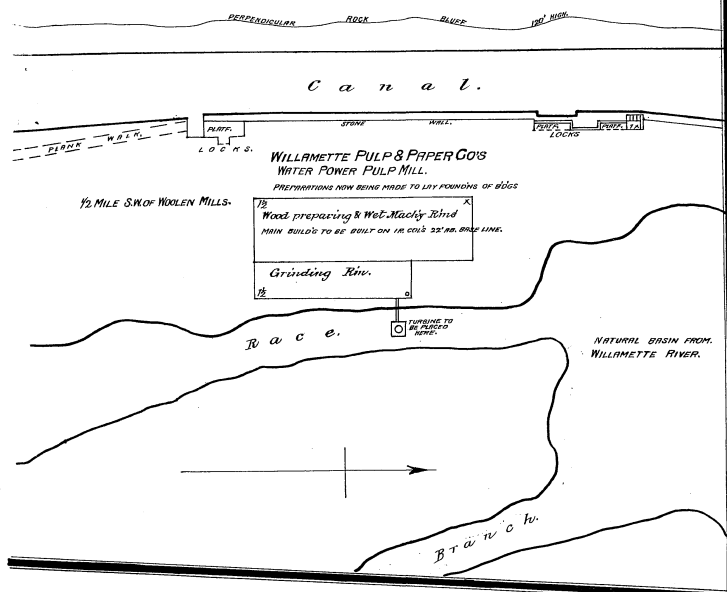
## CODING OF STRUCTURAL UNITS FOR FIREPROOF AND NON-COMBUSTIBLE BUILDINGS

FRAMING		FLOORS		ROOF	
CODE	STRUCTURAL UNIT	CODE	STRUCTURAL UNIT	CODE	STRUCTURAL UNIT
A.	Reinforced Concrete Frame.	1.	Reinforced Concrete, Reinforced Concrete with Masonry Units, Pre-cast Concrete or Gypsum Slabs or Planks.	a.	Reinforced Concrete, Reinforced Concrete with Masonry Units, Reinforced Gypsum Concrete, Pre-cast Concrete or Gypsum Slabs or Planks.
B.	Reinforced Concrete Joists, Columns, Beams, Trusses, Arches, Masonry Piers.	2.	Concrete on Metal Lath, Incombustible Form Boards, Paper-backed Wire Fabric, Steel Deck,	b.	Concrete or Gypsum on Metal Lath, Incombustible Form Boards, Paper-backed
C.	Protected Steel Frame.				
D.	Individually Protected Steel Joists, Columns				



(340)

Willamette River. 9 SHEETS.



Scale of Feet.

FILE 1188.

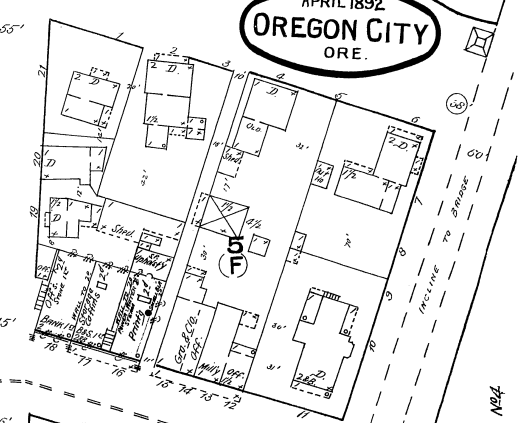
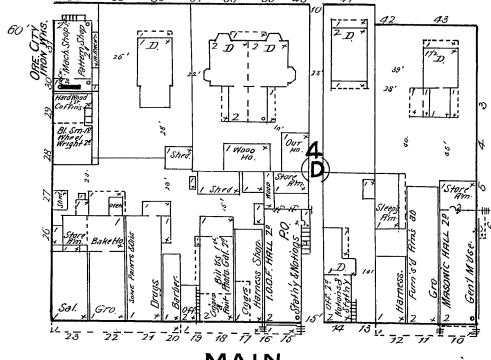
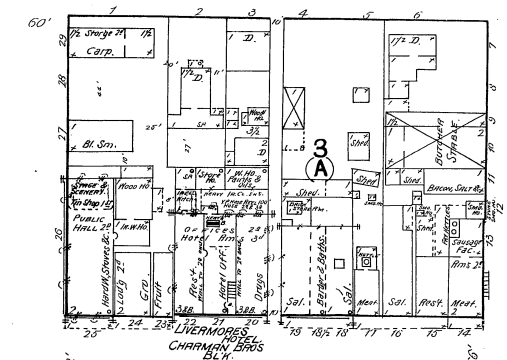


Willamette River

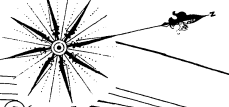
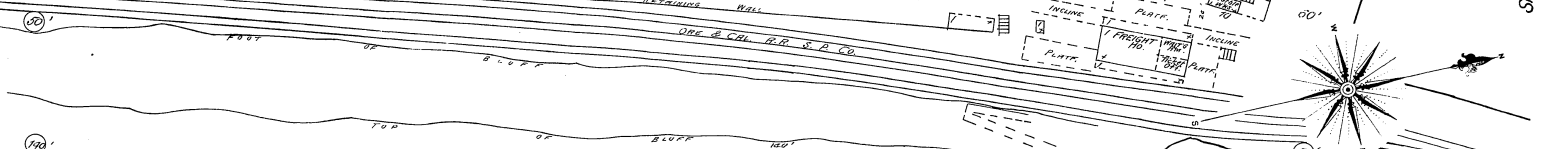
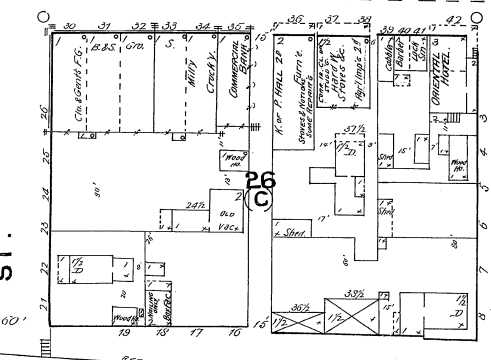
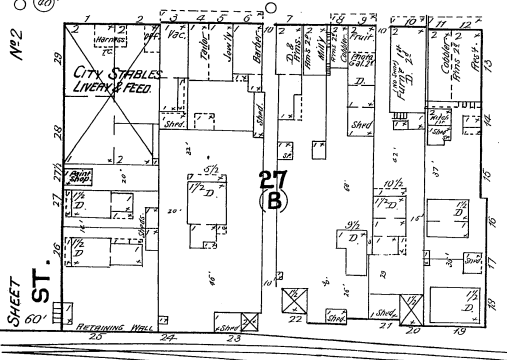
Willamette River 3

WATER

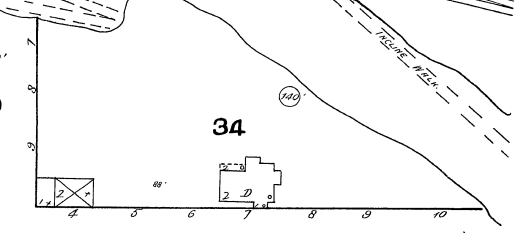
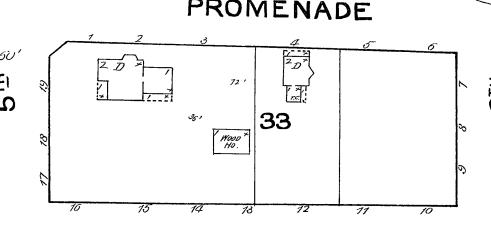
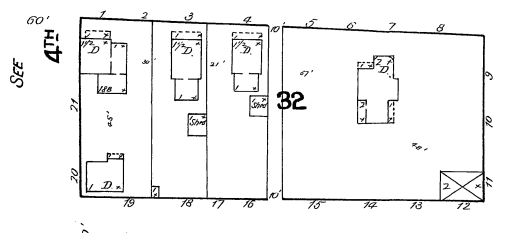
APRIL 1892  
OREGON CITY  
ORE.



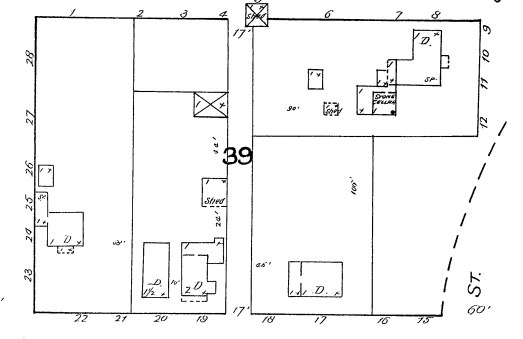
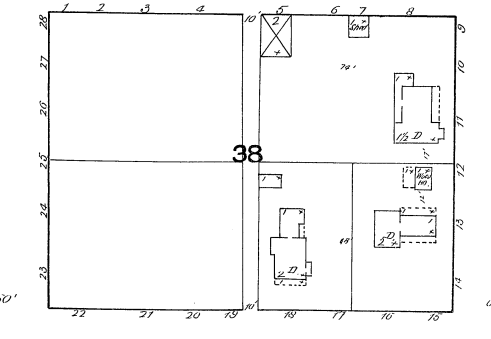
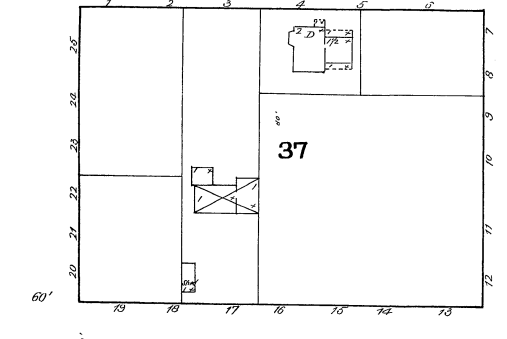
MAIN



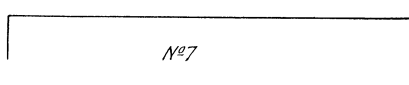
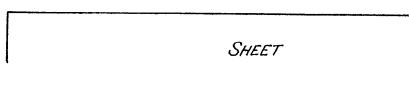
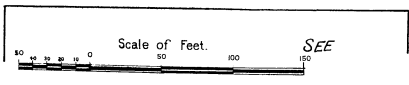
PROMENADE



HIGH



CENTER



SHEET

No 7

7TH



WATER

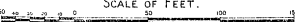
MAIN (St. widened)

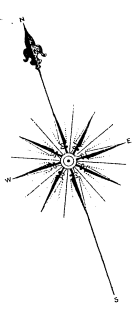
PROMENADE

HIGH

17

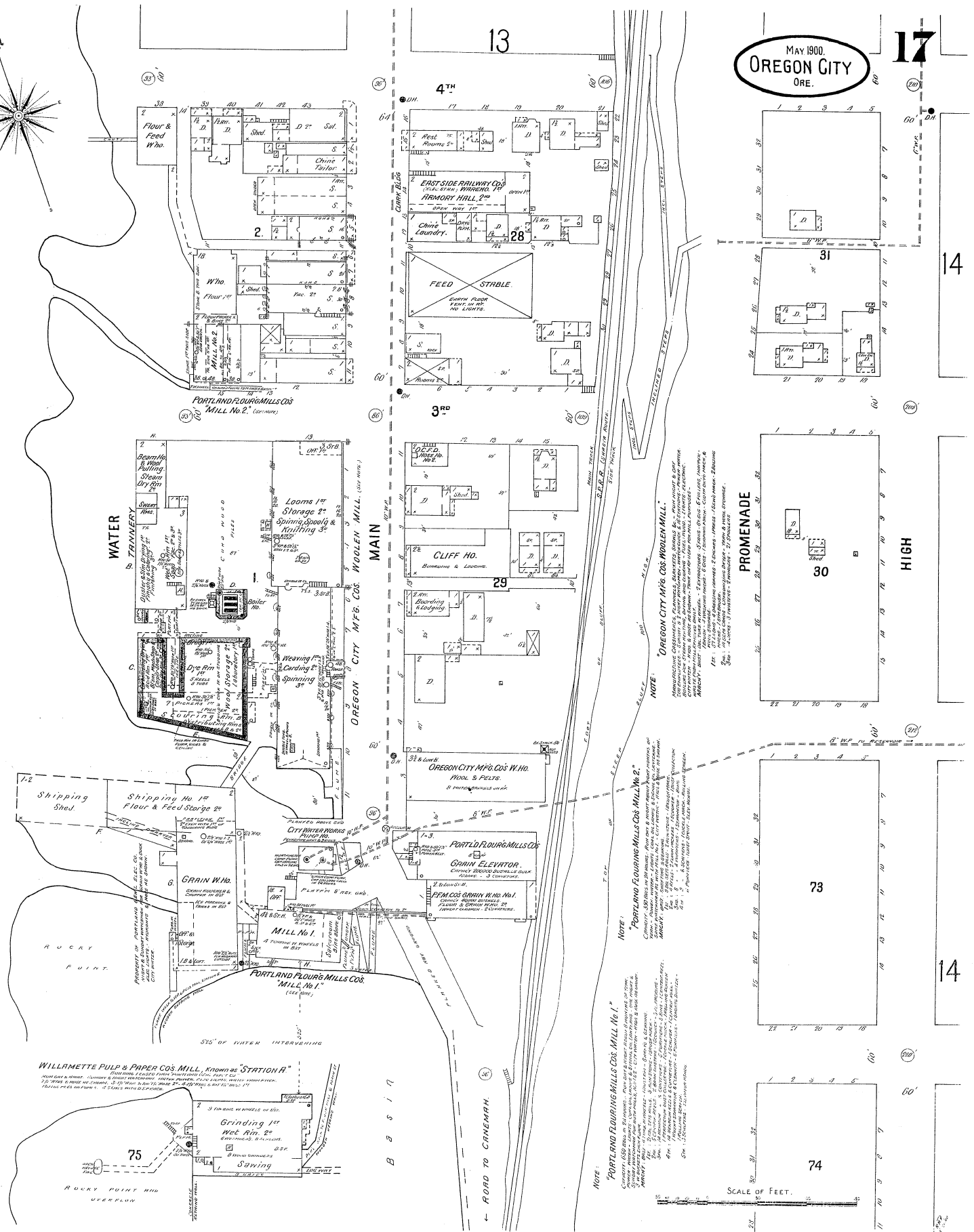
SCALE OF FEET.





River

Willamette



PORTLAND FLOUR MILLS CO'S  
MILL No. 2. (See notes)

PORTLAND FLOUR MILLS CO'S  
MILL No. 1.  
(See notes)

WILLAMETTE PULP & PAPER CO'S MILL, KNOWN AS "STATION A"

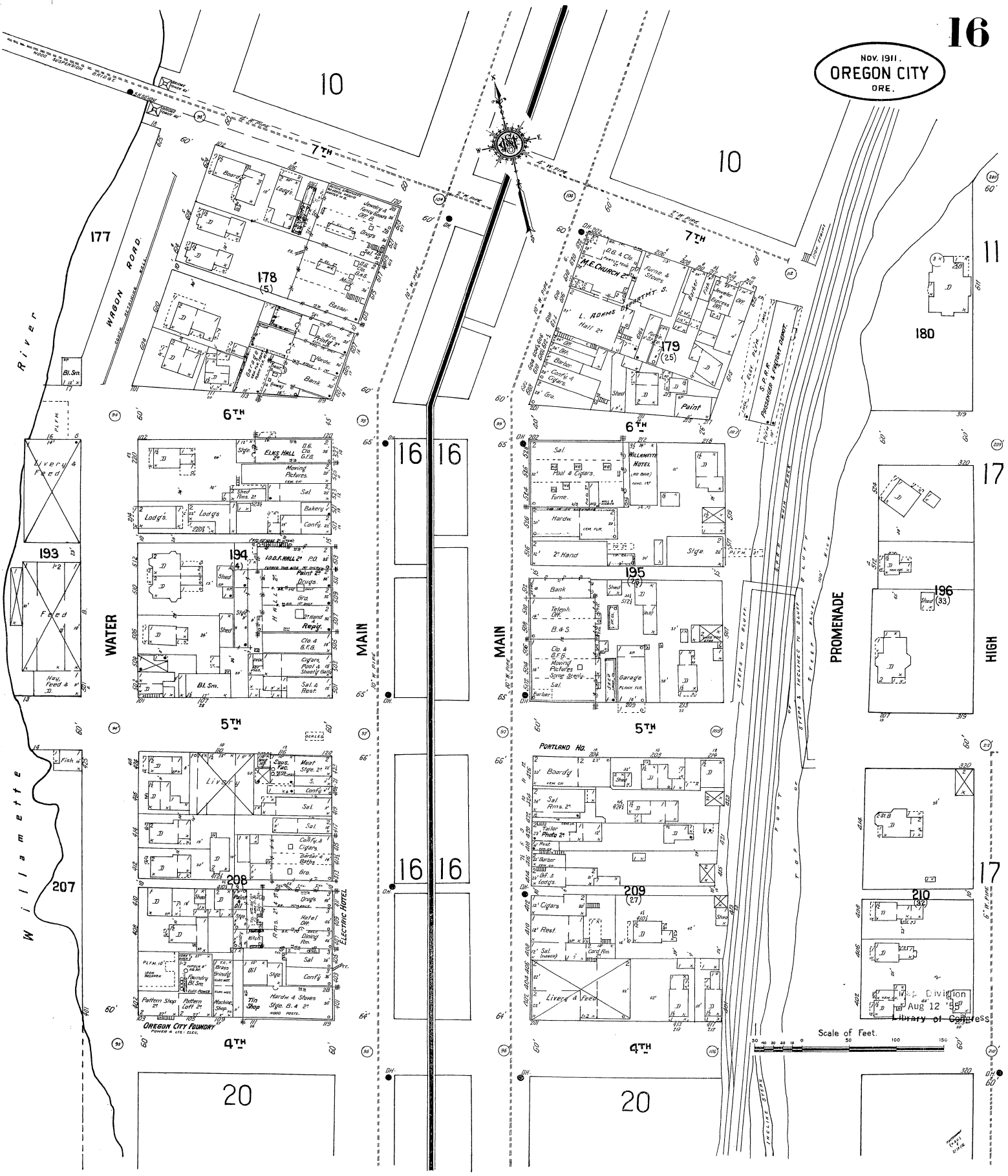
NOTE:  
"OREGON CITY MFG. CO'S WOOLEN MILL."  
Manufacture of woolens & felts, also tweeds, broadcloths, & other fabrics. The mill is equipped with the latest machinery, and is one of the best in the West. It is situated on the main street, and is one of the most prominent buildings in the city.

NOTE:  
"PORTLAND FLOUR MILLS CO'S MILL No. 2"  
Capacity 1,500,000 lbs. per year. Flour and meal. The mill is equipped with the latest machinery, and is one of the best in the West. It is situated on the main street, and is one of the most prominent buildings in the city.

NOTE:  
"PORTLAND FLOUR MILLS CO'S MILL No. 1"  
Capacity 1,500,000 lbs. per year. Flour and meal. The mill is equipped with the latest machinery, and is one of the best in the West. It is situated on the main street, and is one of the most prominent buildings in the city.

SCALE OF FEET.

Nov. 1911.  
OREGON CITY  
ORE.



177

178 (5)

6TH

5TH

4TH

20

10

7TH

16

16

16

16

5TH

4TH

20

10

7TH

6TH

5TH

4TH

180

11

17

HIGH

17

196 (33)

210

Division of  
Library of Congress

Scale of Feet.

320

320

320

320

320

320

320

320

320

320

320

320

320

320

320

320

320

320

320

320

320

320

320

320

320

320

320

320

320

320

320

320

320

320

320

320

320

320

320

320

320

320

320

320

320

320

320

320

320

320

320

320

320

320

320

320

320

320

320

320

320

320

320

320

320

320

320

320

320

320

320

320

320

320

320

320

320

320

320

320

320

320

320

320

320

320

320

320

320

320

320

320

320

320

320

320

320

320

320

320

320

320

320

320

320

320

320

320

320

320

320

320

320

320

320

320

320

320

320

320

320

320

320

320

320

320

320

320

320

320

320

320

320

320

320

320

320

320

320

320

320

320

320

320

320

320

320

320

320

320

320

320

320

320

320

320

320

320

320

320

320

320

320

320

320

320

320

320

320

320

320

320

320

320

320

320

320

320

320

320

320

320

320

320

320

320

320

320

320

320

320

320

320

320

320

320

320

320

320

320

320

320

320

320

320

320

320

320

320

320

320

320

320

320

320

320

320

320

320

320

320

320

320

320

320

320

320

320

320

320

320

320

320

320

320

320

320

320

320

320

320

320

320

320

320

320

320

320

320

320

320

320

320

320

320

320

320

320

320

320

320

320

320

320

320

320

320

320

320

320

320

320

320

320

320

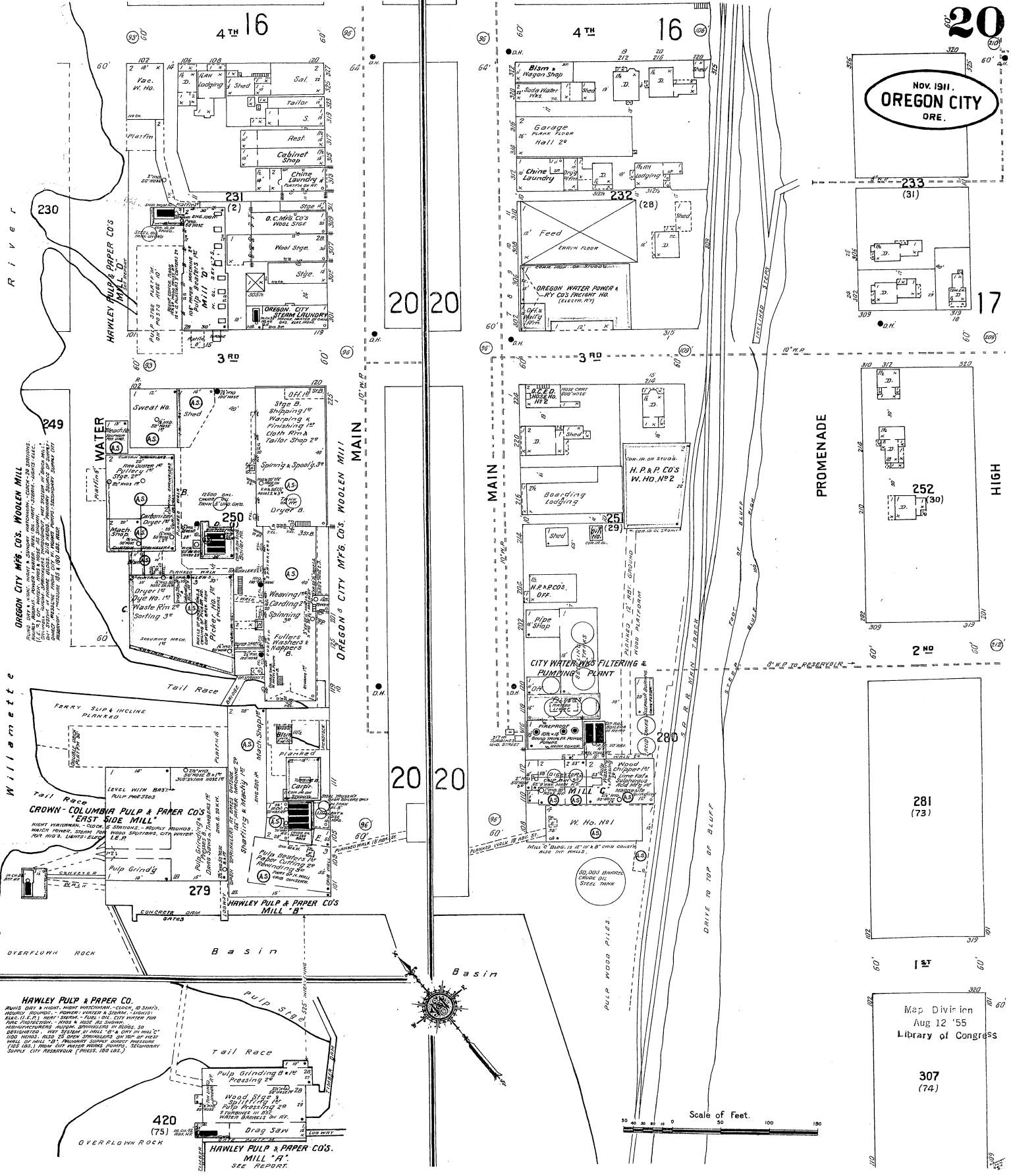
320

320

320

320





20  
 Nov. 1911.  
**OREGON CITY**  
 ORE.

233  
 (31)

252  
 (30)

281  
 (73)

Map Division  
 Aug 12 '55  
 Library of Congress

307  
 (74)

OREGON CITY MFG. CO. WOOLEN MILL  
 (Detailed description of mill operations and equipment)

**HAWLEY PULP & PAPER CO.**  
 (Detailed description of pulp and paper mill operations)



Scale of feet.  
 0 50 100 150



82

Willamette River

207

7

5

7TH

6TH

5TH

4TH

5

7TH

6TH

5TH

4TH

17

6TH

20

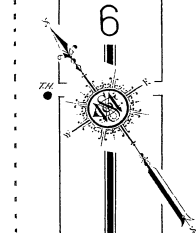
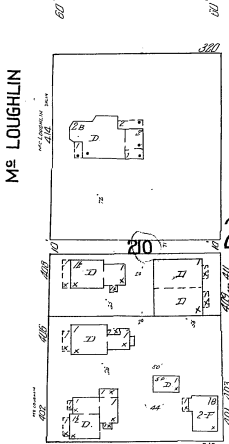
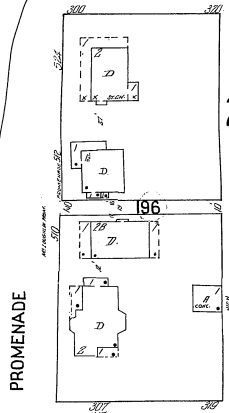
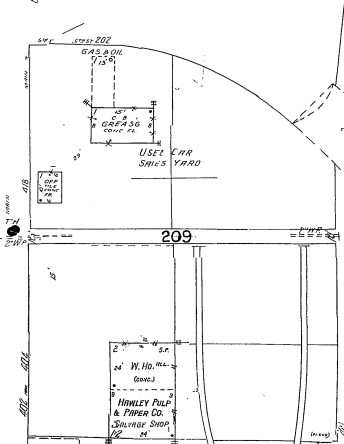
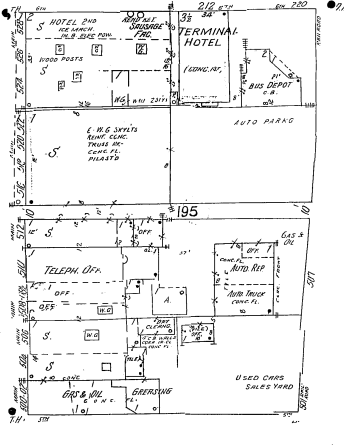
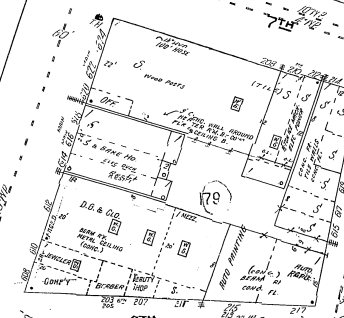
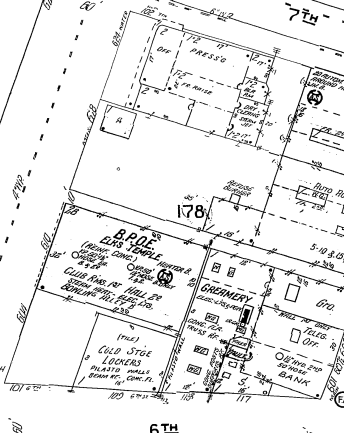
196

HIGH

20

210

20



Scale of Feet.

Copyright 1925 by The S. W. Simpson Co., Inc.

