

REGIONAL POLICY ADVISORY COMMITTEE

MEETING ANNOUNCEMENT

WEDNESDAY, FEBRUARY 12, 1992

5:30 - 7:00 PM, ROOM 440, METRO CENTER

WELCOME TO RPAC!!!

AGENDA:

- I. CALL TO ORDER AND INTRODUCTIONS**
- II. SELECT REGULAR MONTHLY MEETING TIME (ACTION REQUESTED)**
- III. SELECT CITIZEN REPRESENTATIVES (ACTION REQUESTED)**
- IV. URBAN GROWTH MANAGEMENT WORKPLAN/PROPOSED LOCAL DUES ASSESSMENT (ACTION REQUESTED)**
- V. REGION 2040 PHASE I STUDY (PROGRESS REPORT, SCHEDULE)**
- VI. PERIODIC REVIEW OF THE URBAN GROWTH BOUNDARY (PROGRESS REPORT, SCHEDULE)**
- VII. OTHER**

This will be the first meeting of the Regional Policy Advisory Committee (RPAC). RPAC was established by the Metro Council upon the adoption of the Regional Urban Growth Goals and Objectives. RPAC has been created to advise Metro on the development and implementation of the regional planning program, and to provide a forum for identifying and discussing areas and activities of metropolitan significance. Please feel free to contact Ethan Seltzer (220-1537) should you have any comments or questions.

Thanks! Please let us know if you cannot make it.

REGIONAL POLICY ADVISORY COMMITTEE

MEMBERSHIP

JANUARY 29, 1992

Multnomah County Commission -

Commissioner Pauline Anderson
Multnomah County Board of Commissioners
1021 SW 4th Avenue, Room 605
Portland, OR 97204

Fred Neal, Alternate
Multnomah County
1021 SW 4th Avenue, Room 134
Portland, OR 97204

Gresham -

Mayor Gussie McRobert
City of Gresham
1333 NW Eastman Parkway
Gresham, OR 97030-3825

Councilman Jack Gallagher, Alternate
City of Gresham
1333 NW Eastman Parkway
Gresham, OR 97030-3825

Portland -

Commissioner Earl Blumenauer
City of Portland
1220 SW 5th Avenue, Room 407
Portland, OR 97204

Commissioner Gretchen Kafoury
City of Portland
1220 SW 5th Avenue, Room 211
Portland, OR 97204

Cities in Multnomah County -

Councilman Bruce Thompson
City of Troutdale
104 SE Kibling Avenue
Troutdale, OR 97060

Councilman Roger Vonderharr, Alternate
City of Fairview
P.O. Box 337
Fairview, OR 97024

Citizens in Multnomah County - TBA

Clackamas County Commission -

Commissioner Darlene Hooley*
Clackamas County Board of Commissioners
906 Main Street
Oregon City, OR 97045-1882

Lake Oswego -

Mayor Alice Schlenker
City of Lake Oswego
P.O. Box 369
Lake Oswego, OR 97034

Councilman Ed Marcotte, Alternate
City of Lake Oswego
P.O. Box 369
Lake Oswego, OR 97034

Cities in Clackamas County - TBA

Citizens in Clackamas County - TBA

Washington County Commission -

Commissioner Roy R. Rogers*
Washington County Board of Commissioners
150 North First Avenue
Hillsboro, OR 97124

Beaverton -

Mayor Larry Cole*
City of Beaverton
P. O. Box 4755
Beaverton, OR 97076

Cities in Washington County -

Councilman Richard Kidd
City of Forest Grove
3022 Watercrest Road
Forest Grove, OR 97106

John Godsey, Alternate
3076 SE Oak
Hillsboro, OR 97123

Citizens in Washington County - TBA

State Agency Council -

Richard Benner, Director
State Agency Council
Department of Land Conservation and Development
1175 Court Street NE
Salem, OR 97310-0050

Metro Council -

Councilor Jim Gardner, RPAC Chair
Metro Council

Councilor Susan McLain
Metro Council
2510 Mills Road
Forest Grove, OR 97116

Councilor Richard Devlin, Alternate
Metro Council

* written notification of appointment not yet received

METRO

Planning and Development
2000 S.W. First Avenue
Portland, OR 97201-5398
503/220-1537 Fax 273-5585

Memorandum

DATE: January 29, 1992

TO: Regional Policy Advisory Committee

FROM: Ethan Seltzer, Land Use Coordinator

SUBJECT: Urban Growth Management Workplan/Local Dues Assessment

Attached is a memo and materials describing the proposed local dues assessment for the coming fiscal year (FY 1992-93). Prior to establishing the dues rate, adopting a budget for FY 1992-93, and assessing the dues, Metro consults with JPACT and RPAC regarding the proposed use of the dues. As with the current fiscal year, Metro is proposing a 43 cent per capita dues rate with 35 cents going to transportation and RLIS related projects, and 8 cents going to urban growth management planning. In addition, the proposal also includes some possible add-ons for discussion at the meeting.

JPACT will consider the proposed assessment at its meeting on February 13. At the RPAC meeting on February 12, Metro staff will present the proposed assessment and will ask RPAC to make a formal recommendation to the Metro Council. The Metro Council will incorporate the recommendations of RPAC and JPACT in its deliberations during the budget process.

Please feel free to contact me should you have any questions.



METRO

2000 S.W. First Avenue
Portland, OR 97201-5398
503/221-1646

Memorandum

Date: January 29, 1992

To: TPAC/JPACT/RPAC

From: *AC* Andrew C. Cotugno, Transportation Director
ES Ethan Seltzer, Planning Supervisor

Re: Local Government Dues Assessment

In accordance with ORS 268, the Metro Council must notify local governments of the planned dues assessment 120 days prior to the start of the fiscal year (i.e., by March 1). In addition, Metro must consult with a "local government advisory committee" to determine whether it is necessary to assess the dues.

In January 1990, the Metro Council designated JPACT and the UGM PAC as the "local government advisory committees" to satisfy this requirement, JPACT for the Transportation Department use of the dues and the UGM PAC for the Planning and Development Department's use of the dues. Pending formation of RPAC, it is proposed that JPACT serve this purpose for the FY 93 budget.

ACC:lmk

STAFF REPORT

CONSIDERATION OF RESOLUTION NO. 92-1561 FOR THE PURPOSE OF PROVIDING THE ASSESSMENT OF DUES TO LOCAL GOVERN- MENTS FOR FY 1992-93

Date: January 29, 1992

Presented by: Andrew Cotugno

FACTUAL BACKGROUND AND ANALYSIS

Assessment Authorization and Procedure

ORS 268.513 (Attachment A) authorizes the Metro Council to:

"charge the cities and counties within the District for the services and activities carried out under ORS 268.380 and 268.390."

If the Council follows the recommendation of the Local Government Advisory Committee and determines that it is necessary to charge these local governments, it must establish the total amount to be charged and assess each city and county on the basis of population. The assessment cannot exceed \$.51 per capita per year.

In making the assessment, the Council is required to notify each city, county, Tri-Met and the Port of Portland of its intent to assess and the amount of the assessment at least 120 days before the beginning of the fiscal year for which the charge will be made. The notification for the FY 1991-92 assessment must be made prior to March 3, 1992. Assessments must be paid before October 1, 1992.

Proposed FY 1991-92 Assessment

Attachment B shows the population figures and proposed dues assessment schedule. The values are based upon the latest certified population figures from the Center for Population Research and Census at Portland State University. Each county's unincorporated population estimate is based upon data provided by the Center for Population Research and Census using a formula devised by Metro staff (Attachment C).

The maximum assessment at \$.51 per capita for cities and counties and at 12.5 percent of that rate for Tri-Met and the Port of Portland is \$689,280. In the FY 91-92 budget, the actual dues assessment was approved at \$.43 which in FY 92-93 would be \$581,158. The Transportation and Planning and Development Departments' proposed budgets are based upon continuation of this \$.43 level. However, options for a higher level assessment are presented in Attachment C.

Use of the dues assessment for the Transportation Department and the Planning and Development Department at a \$.43 level generally falls into the following major categories:

1. Grant Match - \$150,845 - The dues plus ODOT and Tri-Met local match are used to leverage federal funding toward Transportation Planning. The program areas, which must be approved in the FY 92 Unified Work Program, include:

- Model Refinement
- Local Technical Assistance
- Regional Transportation Plan Update
- Transportation Improvement Program
- Willamette River Bridge Study
- Demand Management
- Air Quality Plan
- Regional HCT Plan
- Management and Coordination

2. Data Resource Center - \$281,425 - The Data Resource Center publishes periodic updates of historical and forecasted population and employment growth throughout the Portland metropolitan area. In addition, the Regional Land Information System (RLIS) is operational and provides land use-related data. Funding sources for the Data Resource Center include dues, transportation grants, solid waste fees and Metro's General Fund. In general, the dues share is approximately 25 percent of the Data Section budget. Revenues collected from data sales are used to reduce the dues share of this budget.
3. Region 2040/Urban Growth Management - \$148,887 - The Transportation Department and Planning and Development Department are jointly sponsoring the Region 2040 program. In addition, associated projects relating to urban reserves and infill are underway. Other funding sources in the program include Metro General Fund, Tri-Met and ODOT.

EXECUTIVE OFFICER'S RECOMMENDATION

The Executive Officer recommends adoption of Resolution No. 92-1561.

ATTACHMENT A

268.513 Service charge for planning functions of district. (1) The council shall consult with the advisory committee appointed under ORS 268.170 before determining whether it is necessary to charge the cities and counties within the district for the services and activities carried out under ORS 268.380 and 268.390. If the council determines that it is necessary to charge cities and counties within the district for any fiscal year, it shall determine the total amount to be charged and shall assess each city and county with the portion of the total amount as the population of the portion of the city or county within the district bears to the total population of the district provided, however, that the service charge shall not exceed the rate of 51 cents per capita per year. For the purposes of this subsection the population of a county does not include the population of any city situated within the boundaries of that county. The population of each city and county shall be determined in the manner prescribed by the council.

(2) The council shall notify each city and county of its intent to assess and the amount it proposes to assess each city and county at least 120 days before the beginning of the fiscal year for which the charge will be made.

(3) The decision of the council to charge the cities and counties within the district, and the amount of the charge upon each, shall be binding upon those cities and coun-

ties. Cities and counties shall pay their charge on or before October 1 of the fiscal year for which the charge has been made.

(4) When the council determines that it is necessary to impose the service charges authorized under subsection (1) of this section for any fiscal year, each mass transit district organized under ORS chapter 267 and port located wholly or partly within the district shall also pay a service charge to the district for that fiscal year for the services and activities carried out under ORS 268.380 and 268.390. The charge for a mass transit district or port shall be the amount obtained by applying, for the population of the mass transit district or port within the boundaries of the district, a per capita charge that is 12-1/2 percent of the per capita rate established for cities and counties for the same fiscal year. Subsections (2) and (3) of this section apply to charges assessed under this subsection.

(5) This section shall not apply to a fiscal year that begins on or after July 1, 1993. [1977 c.665 §16; 1979 c.804 §10; 1981 c.353 §5; 1985 c.210 §1; 1989 c.327 §2]

ATTACHMENT B

	POPULATION Estimate 1991	ASSESSMENT @.35/	ASSESSMENT @.43/	ASSESSMENT @.51/
Clackamas County				
Total In Metro	197783			
Gladstone	10420	\$3,647.00	\$4,480.60	\$5,314.20
Happy Valley	1650	\$577.50	\$709.50	\$841.50
Johnson City	610	\$213.50	\$262.30	\$311.10
Lake Oswego	31545	\$11,040.75	\$13,564.35	\$16,087.95
Milwaukie	19450	\$6,807.50	\$8,363.50	\$9,919.50
Oregon City	16760	\$5,866.00	\$7,206.80	\$8,547.60
Rivergrove	295	\$103.25	\$126.85	\$150.45
West Linn	17160	\$6,006.00	\$7,378.80	\$8,751.60
Wilsonville	8755	\$3,064.25	\$3,764.65	\$4,465.05
Unincorporated In Metro	91138	\$31,898.46	\$39,189.53	\$46,480.61
Multnomah County				
Total In Metro	592724			
Fairview	2590	\$906.50	\$1,113.70	\$1,320.90
Gresham	71225	\$24,928.75	\$30,626.75	\$36,324.75
Maywood Park	780	\$273.00	\$335.40	\$397.80
Portland	453065	\$158,572.75	\$194,817.95	\$231,063.15
Troutdale	8195	\$2,868.25	\$3,523.85	\$4,179.45
Wood Village	2930	\$1,025.50	\$1,259.90	\$1,494.30
Unincorporated In Metro	53939	\$18,878.80	\$23,193.96	\$27,509.11
Washington County				
Total In Metro	295718			
Beaverton	57290	\$20,051.50	\$24,634.70	\$29,217.90
Cornelius	6345	\$2,220.75	\$2,728.35	\$3,235.95
Durham	770	\$269.50	\$331.10	\$392.70
Forest Grove	13830	\$4,840.50	\$5,946.90	\$7,053.30
Hillsboro	39500	\$13,825.00	\$16,985.00	\$20,145.00
King City	2060	\$721.00	\$885.80	\$1,050.60
Sherwood	3305	\$1,156.75	\$1,421.15	\$1,685.55
Tigard	30835	\$10,792.25	\$13,259.05	\$15,725.85
Tualatin	16220	\$5,677.00	\$6,974.60	\$8,272.20
Unincorporated In Metro	125563	\$43,947.19	\$53,992.26	\$64,037.34
Total Local		\$380,179.20	\$467,077.30	\$553,975.41
Port of Portland		\$47,522.40	\$58,384.66	\$69,246.93
Tri-Met		\$47,522.40	\$58,384.66	\$69,246.93
TOTAL ASSESSMENT		\$475,224.00	\$583,846.63	\$692,469.26

ATTACHMENT C

Proposed FY 93 Local Government Dues Assessment

I. Proposed Budget @ 43¢

Data Resource Center	\$1,286,565	\$281,425	22%
Model Refinement	1,050,735	18,998	1.8%
Local Technical Assistance	139,950	18,990	13.6%
RTP Update	210,550	11,555	5.5%
TIP	142,900	4,822	3.3%
Willamette River Br. Study	193,450	6,951	3.6%
*Region 2040 - Phase I	193,500	3,265	1.7%
**Region 2040 - Phase II	258,500	37,500	14.5%
Demand Management	140,600	10,060	7.2%
Air Quality Plan	92,500	9,250	10%
Regional HCT Plan	241,450	40,725	16.7%
Management & Coordination	197,000	29,494	15%
Transp. Dept. Subtotal		\$473,035	
Urban Growth Mgmt. (P & D)	\$411,000	\$108,122	26%
TOTAL		\$581,157	

*Also includes carryover:

Dues	\$ 31,250
Metro General Fund	31,250
ODOT	31,250
Tri-Met.	31,250
	<u>\$125,000</u>

**Also includes:

Metro General Fund	\$ 32,500
Tri-Met.	37,500
ODOT	37,500
	<u>\$112,500</u>

II. Proposed RLIS support from PSU - \$50,000 . . . 3.7¢

III. Potential Region 2040 enhancement up to maximum of 51¢

4.3¢	\$ 58,122
8¢	\$108,122

BEFORE THE COUNCIL OF THE
METROPOLITAN SERVICE DISTRICT

FOR THE PURPOSE OF PROVIDING)	RESOLUTION NO. 92-1561
THE ASSESSMENT OF DUES TO LOCAL)	Introduced by Rena Cusma
GOVERNMENTS FOR FY 1992-93)	Executive Officer

WHEREAS, ORS 268.513 authorizes the Council of the Metropolitan Service District (Metro) to "charge the cities and counties within the District for the services and activities carried out under ORS 268.380 and 268.390"; and

WHEREAS, Metro Ordinance 84-180 requires the Metro Council to seek the advice of the Local Government Advisory Committee regarding the assessment of dues as authorized by ORS 268.513; and

WHEREAS, The Joint Policy Advisory Committee on Transportation was appointed as the Local Government Advisory Committee to review Transportation Department use of the local government dues by Resolution No. 90-1212 and this requirement has been fulfilled; now, therefore,

BE IT RESOLVED:

1. That the Metro Council hereby establishes local government dues assessment within the District in the amount of \$____ per capita for FY 1992-93.

2. That notification of the assessment be sent to all cities and counties within the District, Tri-Met and the Port of Portland prior to March 3, 1992.

ADOPTED by the Metro Council this ____ day of February 1992.

Jim Gardner, Presiding Officer

92-1561.RES
ACC:lmk
1-19-92

METRO

Planning and Development
2000 S.W. First Avenue
Portland, OR 97201-5398
503/220-1537 Fax 273-5585

Memorandum

DATE: January 29, 1992

TO: Regional Policy Advisory Committee

FROM: Ethan Seltzer, Land Use Supervisor

SUBJECT: Regional Technical Advisory Committee, Regional Citizen Involvement Coordinating Committee

In addition to establishing RPAC, Metro is currently in the process of responding to Goal 1, Objective 1, of RUGGO, which calls for the creation of the Regional Citizen Involvement Coordinating Committee (RCICC), and is also accomplishing the transformation of the Urban Growth Management Plan Technical Advisory Committee into the Regional Technical Advisory Committee (RTAC). This memo summarizes the activities associated with these committees to date.

1) Regional Technical Advisory Committee (RTAC) - The RTAC voting membership will be composed of technical counterparts for the jurisdictional members of RPAC, representatives of citizens selected by the RCICC, and, like the UGMTAC, representatives of special districts, Tri-Met, planning consultants, development interests, conservation interests, and the Department of Land Conservation and Development. In addition, unlike the UGMTAC, all remaining planning directors in the region will be invited to participate in RTAC discussions as ex-officio members. The first RTAC meeting will be held on February 27, 1992. We will attempt to hold RTAC meetings during the last week of the month so that we can coordinate closely with TPAC, even to the extent of occasionally holding a joint meeting. This will also enable local coordinating committees already set-up in anticipation of the TPAC schedule to consider RTAC issues as well. The first agenda items for RTAC will be the conclusion of periodic review of the urban growth boundary, and the Region 2040 Study.

2) Regional Citizen Involvement Coordinating Committee (RCICC) - Metro staff have been meeting with a committee formed out of the 3 county "CIC/CCI" organizations to develop a proposal for RCICC by-laws. Upon completion of those by-laws, they will be circulated widely for comment before being revised and recommended to the Metro Council for adoption. The RCICC, as proposed in RUGGO, is intended to provide advice and oversight for Metro's citizen involvement efforts. It is not intended to be an additional policy committee. Rather, its mission is to make sure that citizens are involved in policy decisions, and to provide guidance for best

RPAC/RCICC Memo: page 2

accomplishing that end. In addition, we are anticipating that one of the duties for the RCICC, once established, will be to nominate or select citizen representatives for RPAC, consistent with the notion that those represented ought to have the ability to select their representatives.

Please feel free to contact me should you have comments or questions.



METRO

2000 S.W. First Avenue
Portland, OR 97201-5398
503/221-1646

2-12 Meeting Handbook

Memorandum

Date: January 29, 1992

To: TPAC/JPACT/RPAC

From: Andrew C. Cotugno, Transportation Director
Ethan Seltzer, Planning Supervisor

Re: Local Government Dues Assessment

In accordance with ORS 268, the Metro Council must notify local governments of the planned dues assessment 120 days prior to the start of the fiscal year (i.e., by March 1). In addition, Metro must consult with a "local government advisory committee" to determine whether it is necessary to assess the dues.

In January 1990, the Metro Council designated JPACT and the UGM PAC as the "local government advisory committees" to satisfy this requirement, JPACT for the Transportation Department use of the dues and the UGM PAC for the Planning and Development Department's use of the dues. Pending formation of RPAC, it is proposed that JPACT serve this purpose for the FY 93 budget.

ACC:lmk

STAFF REPORT

CONSIDERATION OF RESOLUTION NO. 92-1561B FOR THE
PURPOSE OF PROVIDING THE ASSESSMENT OF DUES TO LOCAL
GOVERNMENTS FOR FY 1992-93

Date: February 12, 1992

Presented by: Andrew Cotugno

FACTUAL BACKGROUND AND ANALYSIS

Assessment Authorization and Procedure

ORS 268.513 (Attachment A) authorizes the Metro Council to:

"charge the cities and counties within the District for the services and activities carried out under ORS 268.380 and 268.390."

If the Council follows the recommendation of the Local Government Advisory Committee and determines that it is necessary to charge these local governments, it must establish the total amount to be charged and assess each city and county on the basis of population. The assessment cannot exceed \$.51 per capita per year.

In making the assessment, the Council is required to notify each city, county, Tri-Met and the Port of Portland of its intent to assess and the amount of the assessment at least 120 days before the beginning of the fiscal year for which the charge will be made. The notification for the FY 1991-92 assessment must be made prior to March 3, 1992. Assessments must be paid before October 1, 1992.

TPAC reviewed the proposed dues assessment at its meeting on January 31 and deferred action until its special February 12 meeting to allow further review of jurisdictional budgets prior to its recommendation. At that time, they recommended adoption of this resolution.

Proposed FY 1991-92 Assessment

Attachment B shows the population figures and proposed dues assessment schedule. The values are based upon the latest certified population figures from the Center for Population Research and Census at Portland State University. Each county's unincorporated population estimate is based upon data provided by the Center for Population Research and Census using a formula devised by Metro staff (Attachment C).

The maximum assessment at \$.51 per capita for cities and counties and at 12.5 percent of that rate for Tri-Met and the Port of Portland is \$689,280. In the FY 91-92 budget, the actual dues

assessment was approved at \$.43 which in FY 92-93 would be \$581,158. The Transportation and Planning and Development Departments' proposed budgets are based upon continuation of this \$.43 level. However, options for a higher level assessment are presented in Attachment C.

Use of the dues assessment for the Transportation Department and the Planning and Development Department at a \$.43 level generally falls into the following major categories:

1. Grant Match - \$150,845 - The dues plus ODOT and Tri-Met local match are used to leverage federal funding toward Transportation Planning. The program areas, which must be approved in the FY 92 Unified Work Program, include:

- Model Refinement
- Local Technical Assistance
- Regional Transportation Plan Update
- Transportation Improvement Program
- Willamette River Bridge Study
- Demand Management
- Air Quality Plan
- Regional HCT Plan
- Management and Coordination

2. Data Resource Center - \$281,425 - The Data Resource Center publishes periodic updates of historical and forecasted population and employment growth throughout the Portland metropolitan area. In addition, the Regional Land Information System (RLIS) is operational and provides land use-related data. Funding sources for the Data Resource Center include dues, transportation grants, solid waste fees and Metro's General Fund. In general, the dues share is approximately 25 percent of the Data Section budget. Revenues collected from data sales are used to reduce the dues share of this budget.
3. Region 2040/Urban Growth Management - \$148,887 - The Transportation Department and Planning and Development Department are jointly sponsoring the Region 2040 program. In addition, associated projects relating to urban reserves and infill are underway. Other funding sources in the program include Metro General Fund, Tri-Met and ODOT.

EXECUTIVE OFFICER'S RECOMMENDATION

The Executive Officer recommends adoption of Resolution No. 92-1561B.

ATTACHMENT A

268.513 Service charge for planning functions of district. (1) The council shall consult with the advisory committee appointed under ORS 268.170 before determining whether it is necessary to charge the cities and counties within the district for the services and activities carried out under ORS 268.380 and 268.390. If the council determines that it is necessary to charge cities and counties within the district for any fiscal year, it shall determine the total amount to be charged and shall assess each city and county with the portion of the total amount as the population of the portion of the city or county within the district bears to the total population of the district provided, however, that the service charge shall not exceed the rate of 51 cents per capita per year. For the purposes of this subsection the population of a county does not include the population of any city situated within the boundaries of that county. The population of each city and county shall be determined in the manner prescribed by the council.

(2) The council shall notify each city and county of its intent to assess and the amount it proposes to assess each city and county at least 120 days before the beginning of the fiscal year for which the charge will be made.

(3) The decision of the council to charge the cities and counties within the district, and the amount of the charge upon each, shall be binding upon those cities and coun-

ties. Cities and counties shall pay their charge on or before October 1 of the fiscal year for which the charge has been made.

(4) When the council determines that it is necessary to impose the service charges authorized under subsection (1) of this section for any fiscal year, each mass transit district organized under ORS chapter 267 and port located wholly or partly within the district shall also pay a service charge to the district for that fiscal year for the services and activities carried out under ORS 268.380 and 268.390. The charge for a mass transit district or port shall be the amount obtained by applying, for the population of the mass transit district or port within the boundaries of the district, a per capita charge that is 12-1/2 percent of the per capita rate established for cities and counties for the same fiscal year. Subsections (2) and (3) of this section apply to charges assessed under this subsection.

(5) This section shall not apply to a fiscal year that begins on or after July 1, 1993. [1977 c.665 §16; 1979 c.804 §10; 1981 c.353 §5; 1985 c.210 §1; 1989 c.327 §2]

ATTACHMENT B

Proposed FY 93 Local Government Dues Assessment

I. Proposed Budget @ 43¢

Data Resource Center	\$1,286,565	\$281,425	22%
Model Refinement	1,050,735	18,998	1.8%
Local Technical Assistance	139,950	18,990	13.6%
RTP Update	210,550	11,555	5.5%
TIP	142,900	4,822	3.3%
Willamette River Br. Study	193,450	6,951	3.6%
* Region 2040 - Phase I	193,500	3,265	1.7%
** Region 2040 - Phase II	258,500	37,500	14.5%
Demand Management	140,600	10,060	7.2%
Air Quality Plan	92,500	9,250	10%
Regional HCT Plan	241,450	40,725	16.7%
Management & Coordination	197,000	29,494	15%
Transp. Dept. Subtotal		\$473,035	
Urban Growth Mgmt. (P & D)	\$411,000	\$108,122	26%
TOTAL		\$581,157	

* Also includes carryover:

Dues	\$ 31,250
Metro General Fund	31,250
ODOT	31,250
Tri-Met.	31,250
	<u>\$125,000</u>

** Also includes:

Metro General Fund	\$ 37,500
Tri-Met.	37,500
ODOT	37,500
	<u>\$112,500</u>

II. Proposed RLIS support from PSU - \$35,000 . . . 2.58¢

III. Potential Region 2040 enhancement up to maximum of 51¢

5.42¢	\$ 73,122
8¢	\$108,122

BEFORE THE COUNCIL OF THE
METROPOLITAN SERVICE DISTRICT

FOR THE PURPOSE OF PROVIDING) RESOLUTION NO. 92-1561B
THE ASSESSMENT OF DUES TO LOCAL) Introduced by Rena Cusma
GOVERNMENTS FOR FY 1992-93) Executive Officer

WHEREAS, ORS 268.513 authorizes the Council of the Metropolitan Service District (Metro) to "charge the cities and counties within the District for the services and activities carried out under ORS 268.380 and 268.390"; and

WHEREAS, Metro Ordinance 84-180 requires the Metro Council to seek the advice of the Local Government Advisory Committee regarding the assessment of dues as authorized by ORS 268.513; and

WHEREAS, The Joint Policy Advisory Committee on Transportation (JPACT) and the Regional Policy Advisory Committee (RPAC) ~~was were~~ appointed as the Local Government Advisory Committees to review ~~Transportation Department~~ use of the local government dues by Resolution No. 90-1212 and this requirement has been fulfilled; now, therefore,

BE IT RESOLVED:

1. ~~[That the Metro Council hereby establishes local government dues assessment within the District in the amount of \$_____ per capita for FY 1992-93.]~~ That the Metro Council intends to assess local governments at a rate of \$.43 to \$.51 per capita and amounts shown on Exhibit A attached hereto. The Council will establish the final assessment rate and amount based upon deliberation on the FY 1992-93 budget.

2. That the Metro Council further requests a recommendation from RPAC and JPACT regarding the specific work program and

amount of the dues assessment during the budget process.

23. That notification of the assessment be sent to all cities and counties within the District, Tri-Met and the Port of Portland prior to March 3, 1992.

ADOPTED by the Metro Council this _____ day of February 1992.

Jim Gardner, Presiding Officer

92-1561B.RES
ACC:lmk
2-12-92

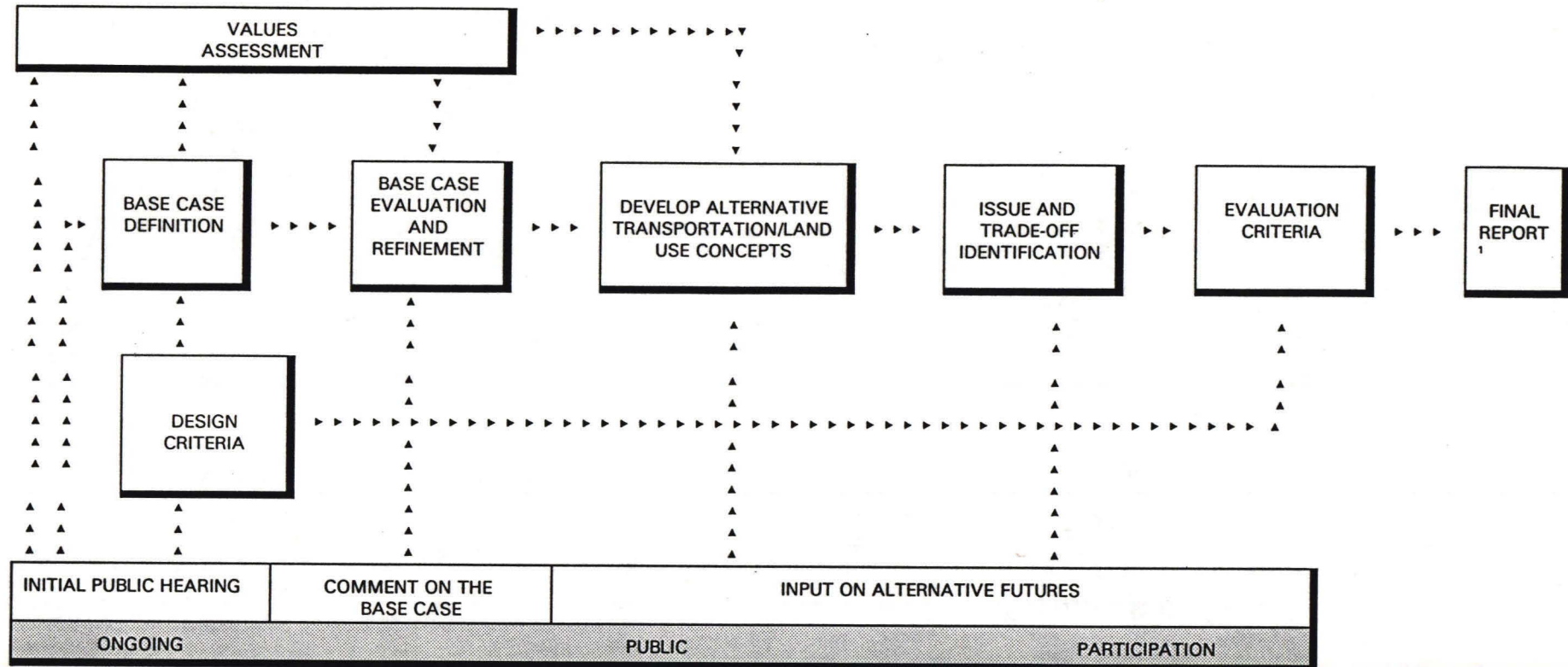
EXHIBIT A

	POPULATION Estimate 1991	ASSESSMENT @.35/	ASSESSMENT @.43/	ASSESSMENT @.51/
Clackamas County				
Total In Metro	197783			
Gladstone	10420	\$3,647.00	\$4,480.60	\$5,314.20
Happy Valley	1650	\$577.50	\$709.50	\$841.50
Johnson City	610	\$213.50	\$262.30	\$311.10
Lake Oswego	31545	\$11,040.75	\$13,564.35	\$16,087.95
Milwaukie	19450	\$6,807.50	\$8,363.50	\$9,919.50
Oregon City	16760	\$5,866.00	\$7,206.80	\$8,547.60
Rivergrove	295	\$103.25	\$126.85	\$150.45
West Linn	17160	\$6,006.00	\$7,378.80	\$8,751.60
Wilsonville	8755	\$3,064.25	\$3,764.65	\$4,465.05
Unincorporated In Metro	91138	\$31,898.46	\$39,189.53	\$46,480.61
Multnomah County				
Total In Metro	592724			
Fairview	2590	\$906.50	\$1,113.70	\$1,320.90
Gresham	71225	\$24,928.75	\$30,626.75	\$36,324.75
Maywood Park	780	\$273.00	\$335.40	\$397.80
Portland	453065	\$158,572.75	\$194,817.95	\$231,063.15
Troutdale	8195	\$2,868.25	\$3,523.85	\$4,179.45
Wood Village	2930	\$1,025.50	\$1,259.90	\$1,494.30
Unincorporated In Metro	53939	\$18,878.80	\$23,193.96	\$27,509.11
Washington County				
Total In Metro	295718			
Beaverton	57290	\$20,051.50	\$24,634.70	\$29,217.90
Cornelius	6345	\$2,220.75	\$2,728.35	\$3,235.95
Durham	770	\$269.50	\$331.10	\$392.70
Forest Grove	13830	\$4,840.50	\$5,946.90	\$7,053.30
Hillsboro	39500	\$13,825.00	\$16,985.00	\$20,145.00
King City	2060	\$721.00	\$885.80	\$1,050.60
Sherwood	3305	\$1,156.75	\$1,421.15	\$1,685.55
Tigard	30835	\$10,792.25	\$13,259.05	\$15,725.85
Tualatin	16220	\$5,677.00	\$6,974.60	\$8,272.20
Unincorporated In Metro	125563	\$43,947.19	\$53,992.26	\$64,037.34
Total Local		\$380,179.20	\$467,077.30	\$553,975.41
Port of Portland		\$47,522.40	\$58,384.66	\$69,246.93
Tri-Met		\$47,522.40	\$58,384.66	\$69,246.93
TOTAL ASSESSMENT		\$475,224.00	\$583,846.63	\$692,469.26

Region 2040: Transportation & Land Use Concepts, Phase I

- PURPOSE** To better understand the alternatives for accommodating the growth expected within the region in the next 50 years and the choices that may be involved. This project results from a recommendation made as part of the process leading to the adoption of the Regional Urban Growth Goals and Objectives (RUGGO). The project is intended to provide guidance for the testing and implementation of concepts in RUGGO.
- PRODUCTS** 1) An explanation of the likely outcome of relying on existing transportation and land use plans to accommodate growth within the region; 2) up to 5 additional regional transportation and land use development alternatives; 3) criteria with which to evaluate the alternatives.
- PARTICIPANTS** The project will strive to include participation from citizens, cities and counties of the region, special districts, business and trade organizations, environmental organizations as well as Metro committees (RPAC, JPACT and their technical committees) and the Metro Council.
- TIMING** Phase I of project is expected to be a 12 month effort, beginning January, 1992.
- FUNDERS** This work effort is funded by the Oregon Department of Transportation (ODOT), Tri-Met and Metro.
- NEXT STEPS** Phase I will include two rounds of public involvement, the first being "kicked off" by the Regional Growth Conference, April 21. Once Phase I is completed, Phase II, scheduled to begin in 1993, will include a detailed evaluation will be made of each alternative and selection of the preferred alternative.
- DETAILS** For more information, a copy of RUGGO, or to get on our mailing list, please contact Ethan Seltzer or Mark Turpel at Metro, Planning and Development Department, 2000 SW First Avenue, Portland, OR 97201. Telephone: 503/221-1646.

Region 2040: Transportation and Land Use Study, Phase I



METRO
 2000 S.W. First Avenue
 Portland, OR 97201
 503/221-1646

¹ The final product will consist of camera-ready: 1) tabloid; 2) final report and 3) final technical report.

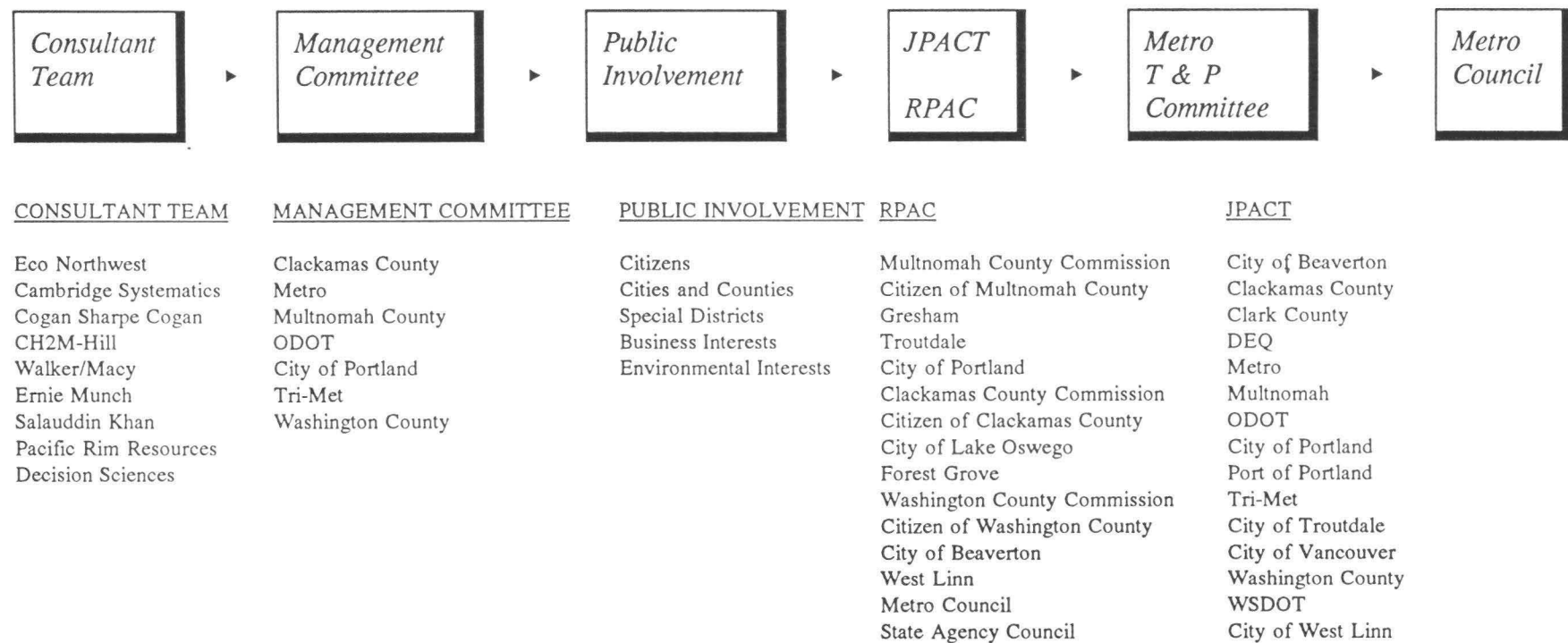
Region 2040: Transportation & Land Use Concepts, Phase I

What's the Process?

The Region 2040 project will include the following steps: 1) technical research and development; 2) public involvement; 3) further review and revision by advisory committees; and 4) review, revision and adoption by the Metro Council.

Who's Involved?

The technical parts of the project will be handled by the consultant team and the Management Committee, composed of planning staffs from many agencies in the region, as listed below. Public involvement will include all interested persons and organizations. JPACT (Joint Policy Advisory Committee on Transportation) and RPAC (Regional Policy Advisory Committee) are primarily committees composed of elected officials who advise Metro. The Metro Council adoption process relies on its Transportation and Planning Committee which may refer actions to the Metro Council for consideration.



For more information, call Ethan Seltzer or Mark Turpel at 503/ 221-1646

Region 2040: Transportation & Land Use Concepts, Phase I

PUBLIC PROCESS

Following is a schedule of public involvement events for Phase I of the Region 2040 project:

February/March	Initial briefing for the elected bodies of all cities and counties of the region about the purpose and timing of Region 2040.
Week of March 21	Region 2040 media kickoff. A formal announcement of the project and description of 2040 workshops to be conducted at the annual growth conference will be given.
March/April	Stakeholder interviews regarding growth values.
March/April	Statistically valid telephone survey regarding growth values.
April 21	Annual Growth Conference with lunch presentation and afternoon workshops devoted to Region 2040.
May	Four public workshops to assess growth values.
May/June	City and County Planning staffs use the Public Involvement Kits to assess growth values of their council/commission.
September	Statistically valid mail survey to detail public interest or concerns with Regional Growth Alternatives.
September/October	City and county elected officials review of growth alternatives.
September/October	Public review workshops of Regional Growth Alternative Maps and materials.
December	Metro Council final review of Regional Growth Alternatives.